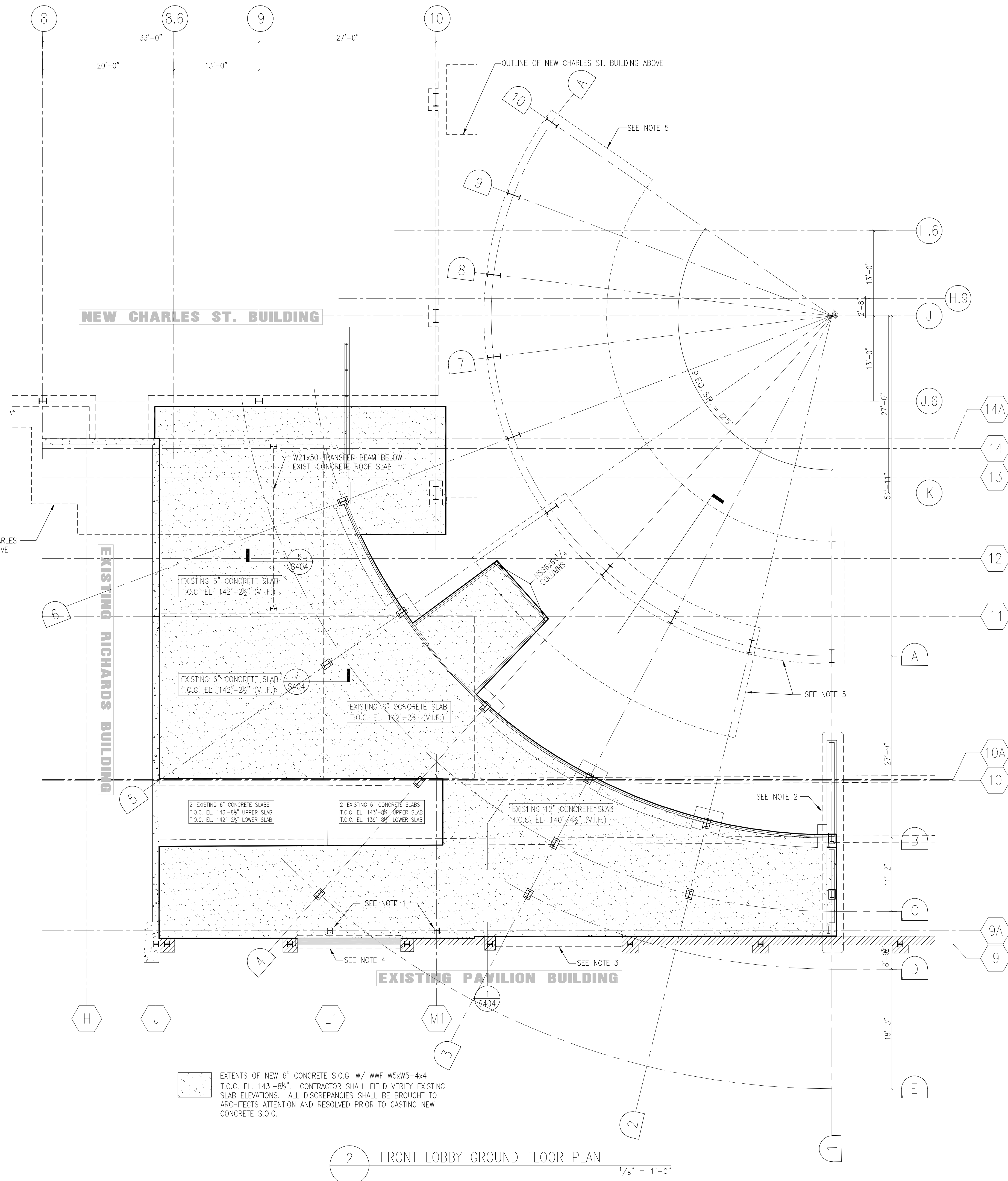


1 FRONT LOBBY FOUNDATION PLAN
1/8" = 1'-0"



2 FRONT LOBBY GROUND FLOOR PLAN
1/8" = 1'-0"

- General Notes:
- EXISTING STEEL COLUMNS TO BE REMOVED. SEE DEMO DRAWINGS FOR DETAILS.
 - 12" REINFORCED CMU WALL WITH 4" BRICK VENEER ON EA. SIDE OF WALL.
 - REMOVE EXISTING EXTERIOR MASONRY WALL. SEE DEMO DRAWINGS FOR EXTENTS.
 - INFILL THIS BAY WITH NEW REINFORCED CONCRETE CONSTRUCTION.
 - OUTLINE OF NEW GLASS CONDOY ABOVE. SEE ARCH. DRAWINGS FOR DETAILS.
- LEGEND GRID LINES:
- A EXISTING RICHARDS BUILDING (1966)
 - 1 PROPOSED NEW CHARLES ST. BUILDING
 - A PROPOSED NEW FRONT LOBBY
- LEGEND COLUMN:
- H INDICATES COLUMN STARTS AT THIS LEVEL
 - H INDICATES COLUMN STOPS AT THIS LEVEL
 - H INDICATES COLUMN CONTINUES
 - [00'-0"] INDICATES BOTTOM OF FOOTING ELEVATION

SGH
Simpson Gumpertz & Heger Inc.
Consulting Engineers

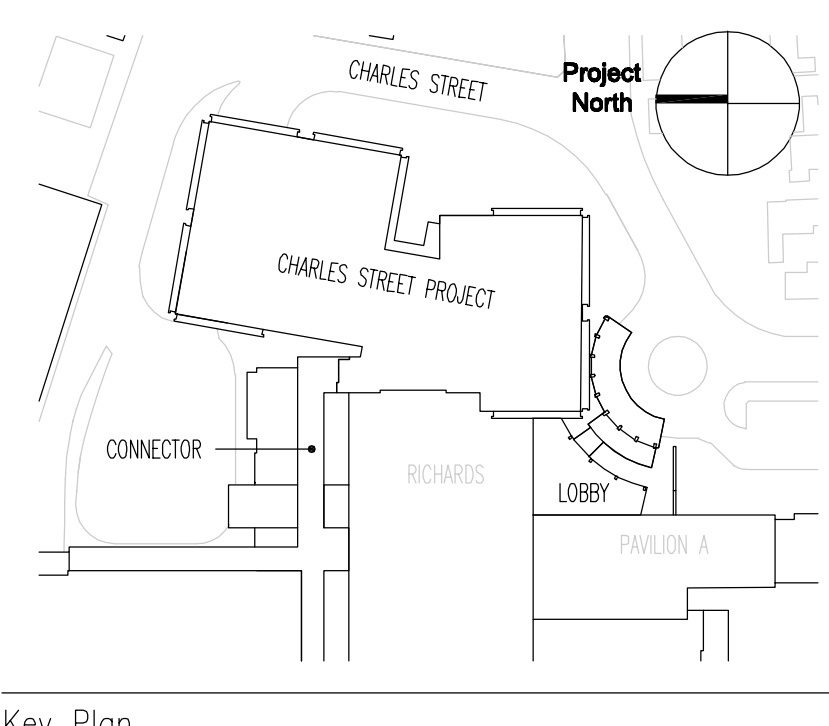
Boston, MA
41 Sayon Street
Building 1, Suite 500
Watham, MA 02453
Telephone: (781) 907 9000
Facsimile: (781) 907 9009

San Francisco, CA
222 Battery Street
Suite 305
San Francisco, CA 94108-4445
Telephone: (415) 495 9700
Facsimile: (415) 495 3550

Washington, DC
1355 Piccard Drive
Suite 225
Rockville, MD 20850
Telephone: (301) 417 0999
Facsimile: (301) 417 9825

FOR PERMIT ONLY - NOT FOR CONSTRUCTION

PERMIT: 09/24/04 PERMIT SET - NOT FOR CONSTRUCTION
Issue Log



TRO
ARCHITECTURE
PLANNING
ENGINEERING
INTERIOR DESIGN

The Ritchie Organization
80 Bridge Street
Newton, MA 02458-1154
617-969-9400

Maine Medical Center
Charles Street Project
Portland, Maine MMC Project No. 21841

Drawing Title
FRONT LOBBY FOUNDATION PLAN, GROUND FLOOR PLAN

Commission No.	4673	Date Issued	20 October 2003
Scale	AS SHOWN	Sheet Number	
Drawn By	KMS/SK		
Approved By	JIT/JMT		
Filename	L:\2000\20684\030201		
Copyright	© 2004 The Ritchie Organization		

S20GL