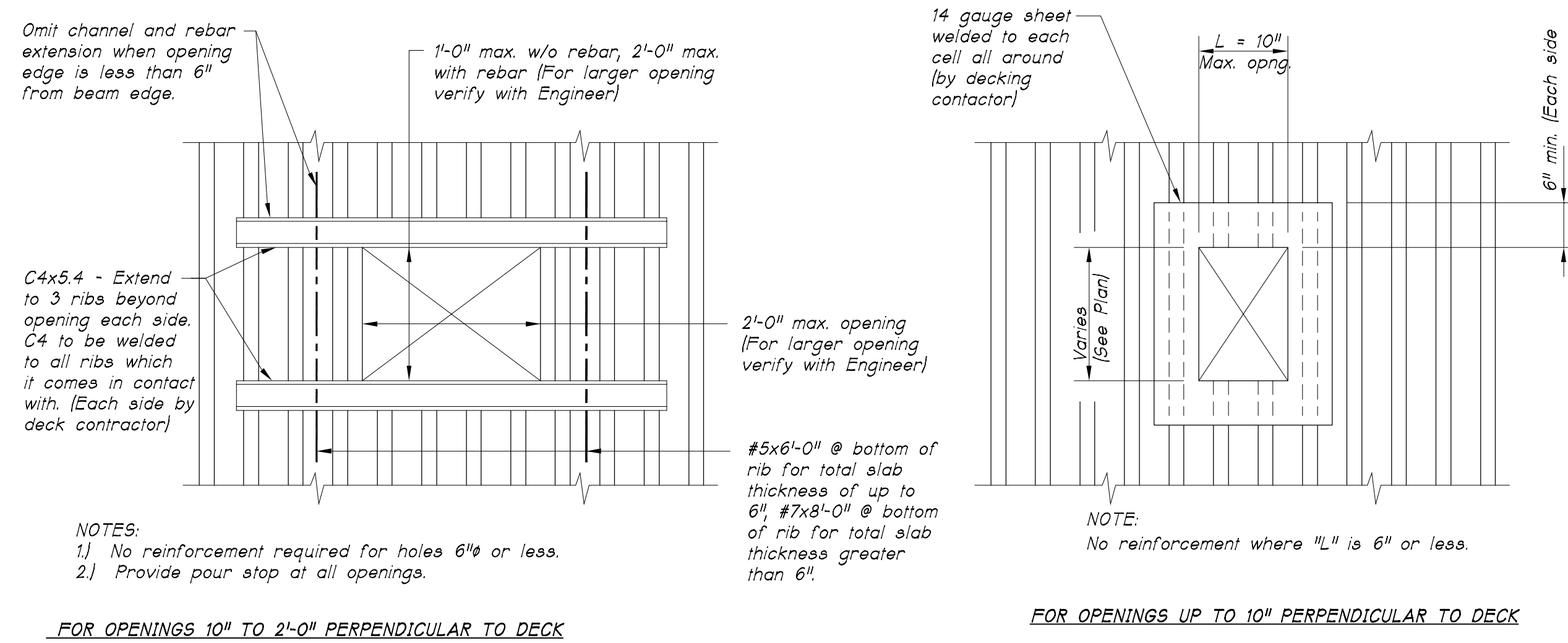
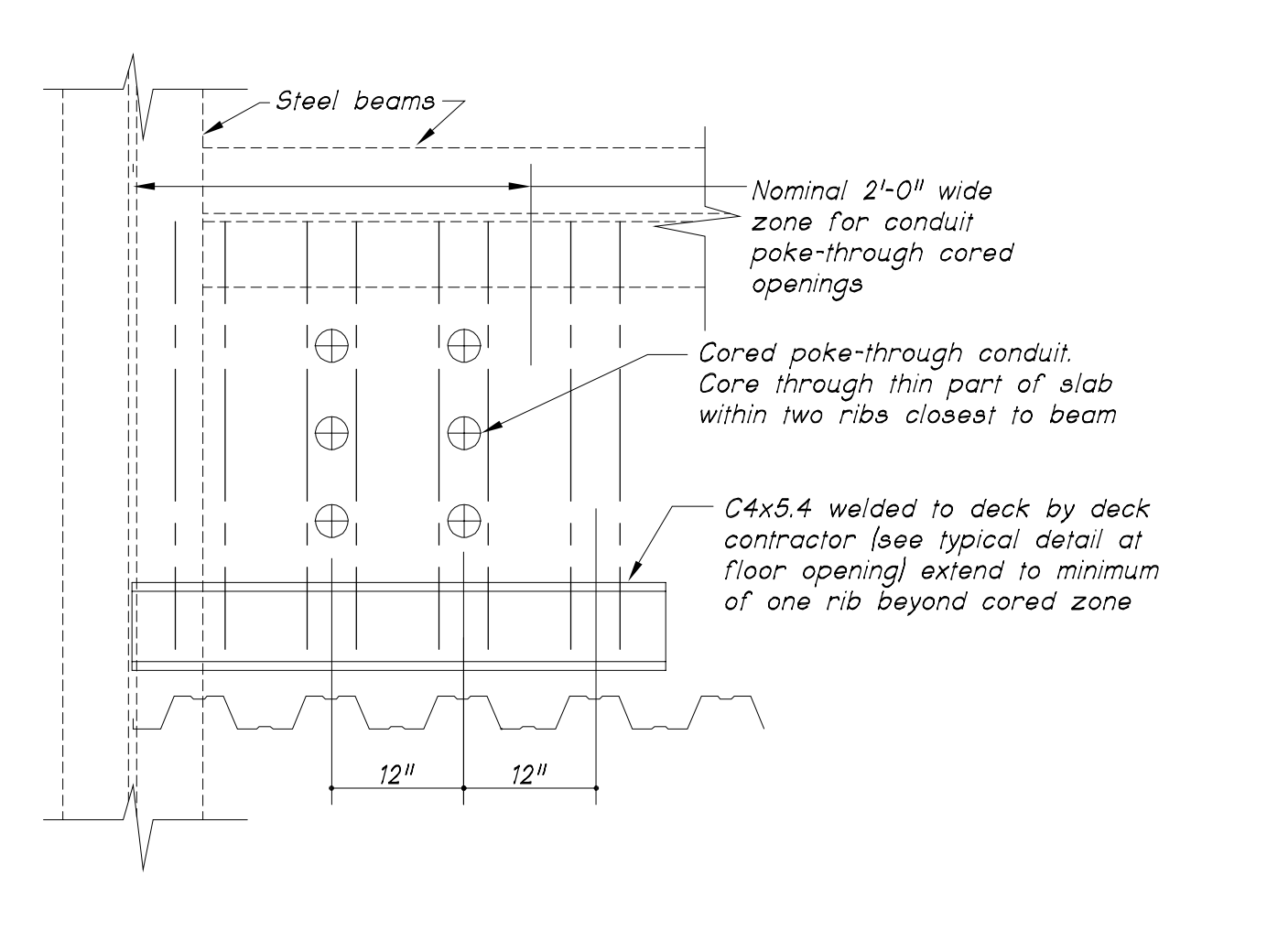


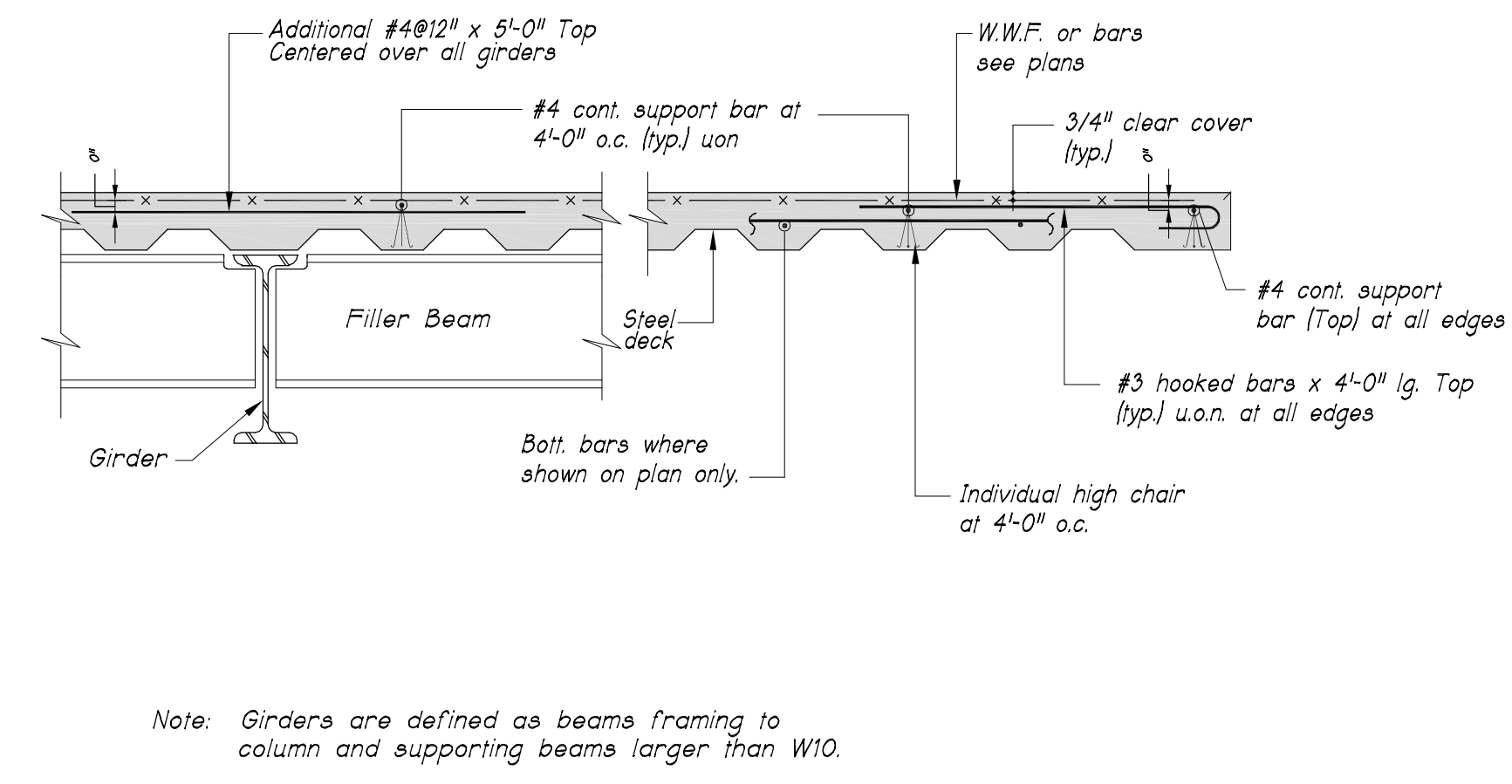
75-12 TYPICAL FASTENING PATTERN FOR COMPOSITE METAL DECK



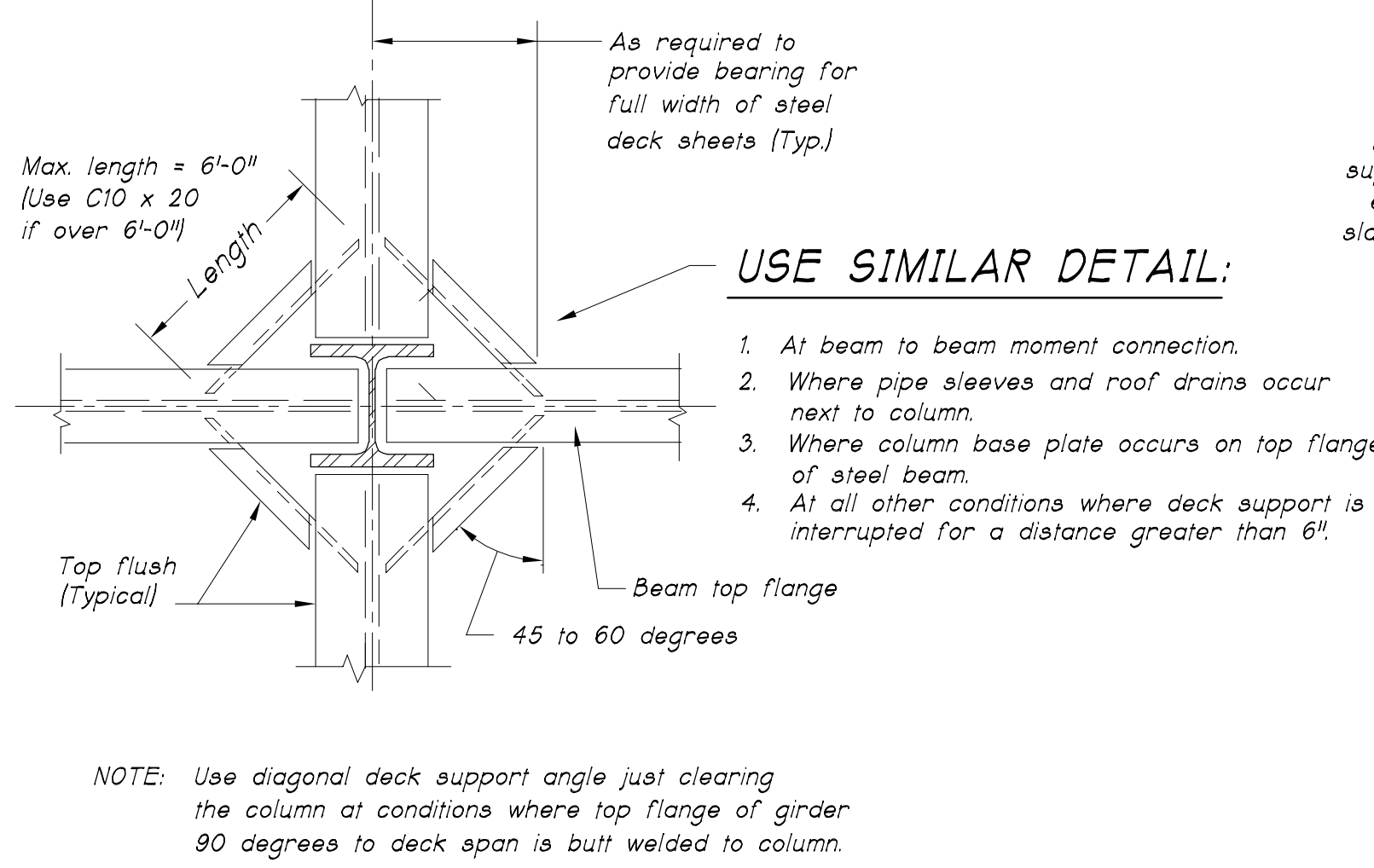
75-13 TYPICAL FLOOR DETAILS AT OPENINGS



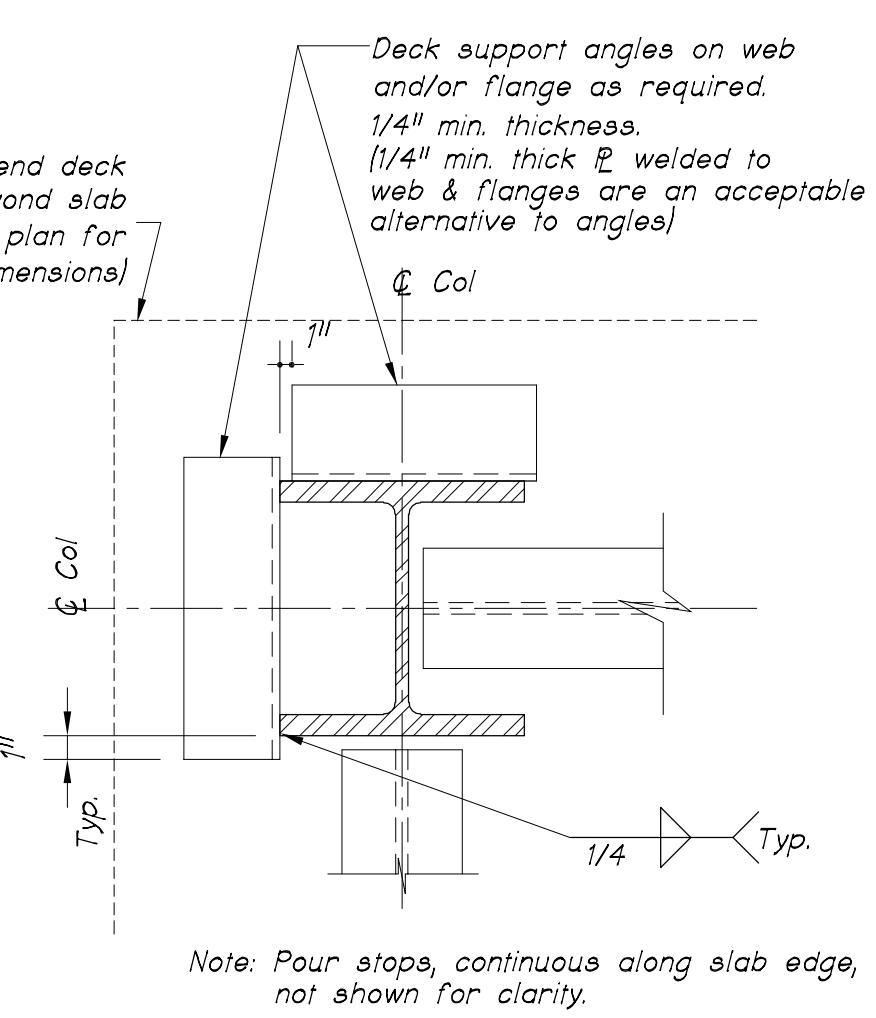
75-14 DECK REINFORCEMENT @ ELECTRICAL / DATA / TELEPHONE ROOM CONDUIT BANK FLOOR PENETRATIONS



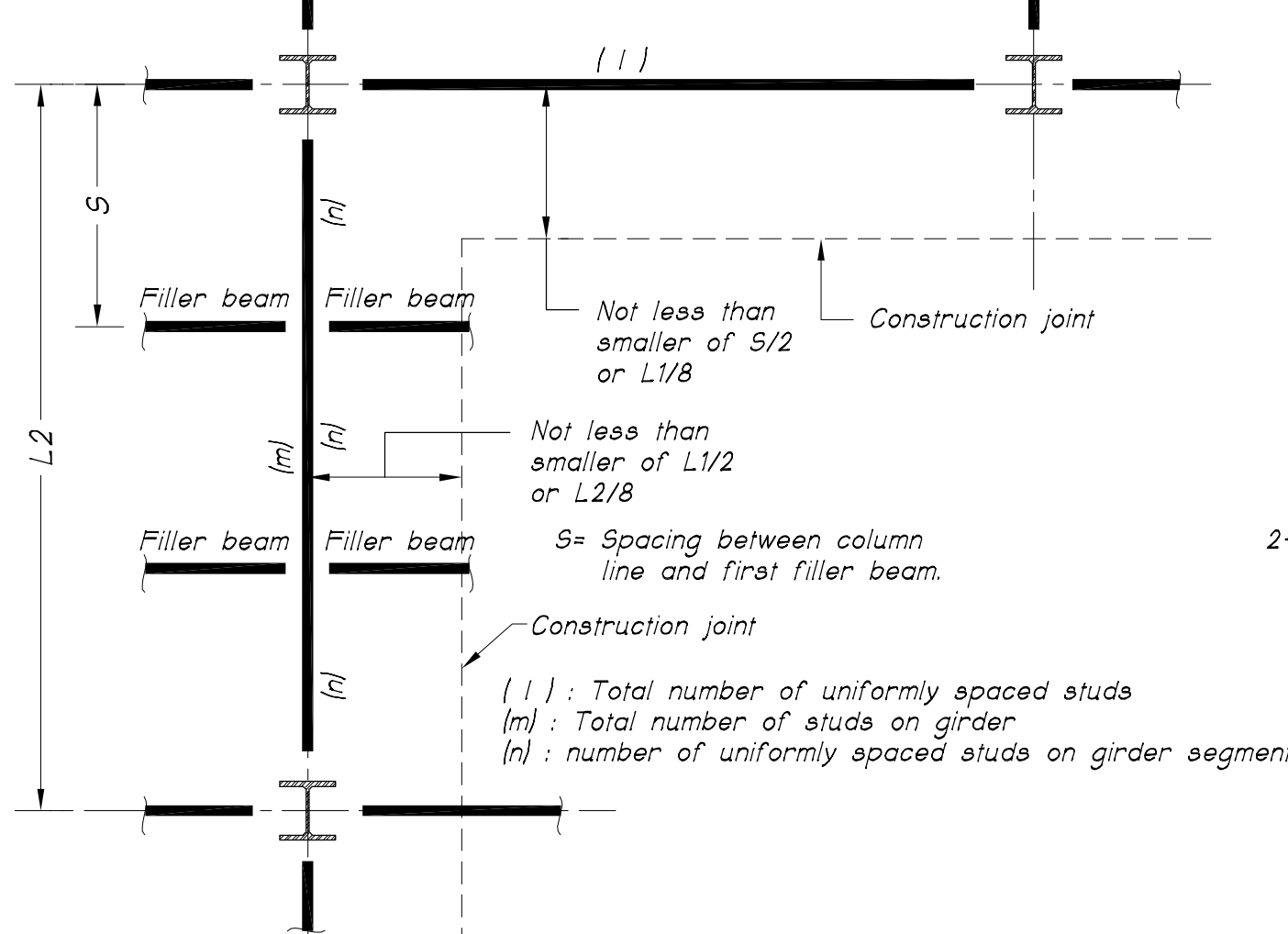
75-15 TYPICAL COMPOSITE DECK SLAB DETAIL



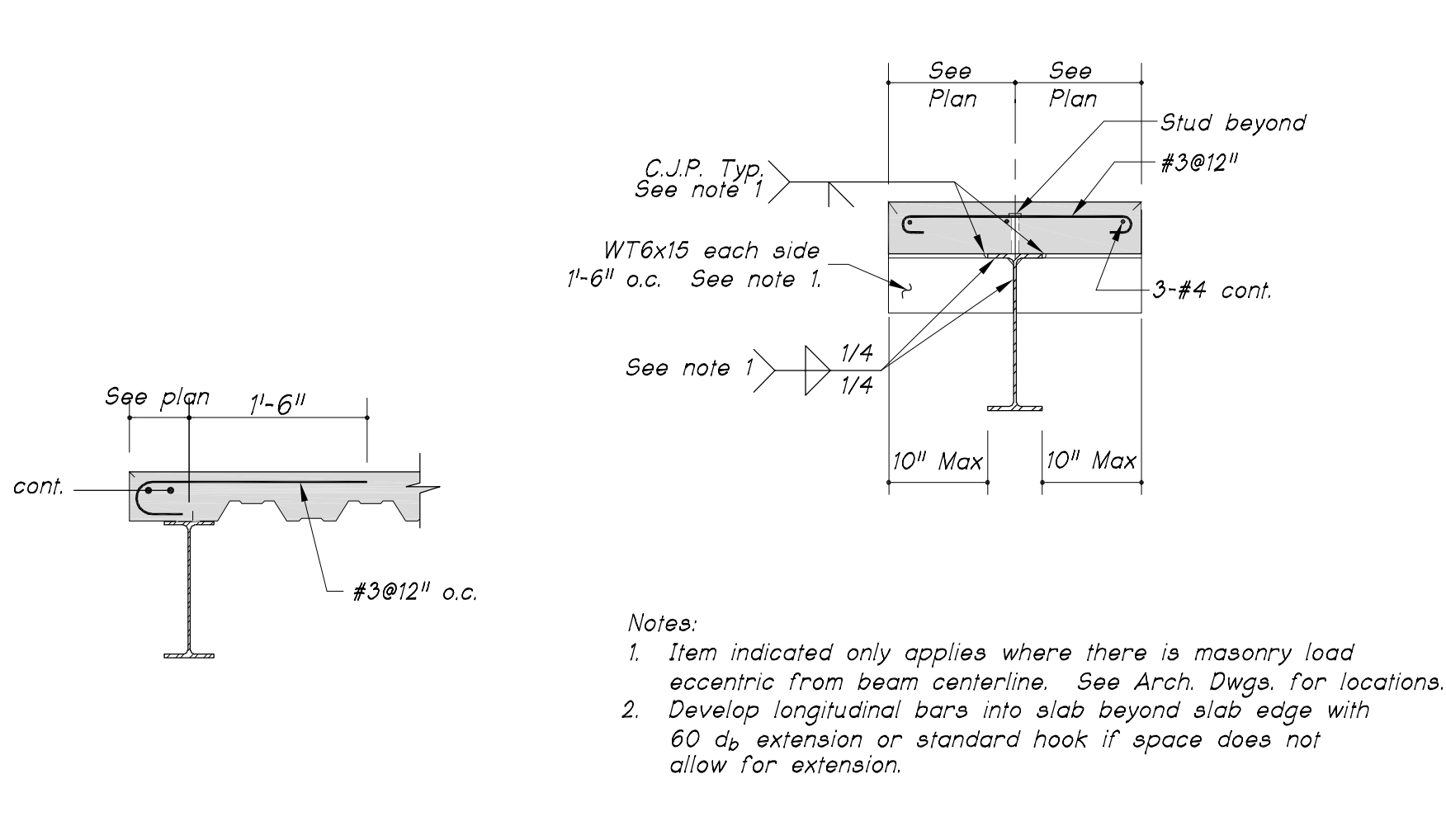
75-16 DECK SUPPORT AT MOMENT CONNECTION AT COLUMN



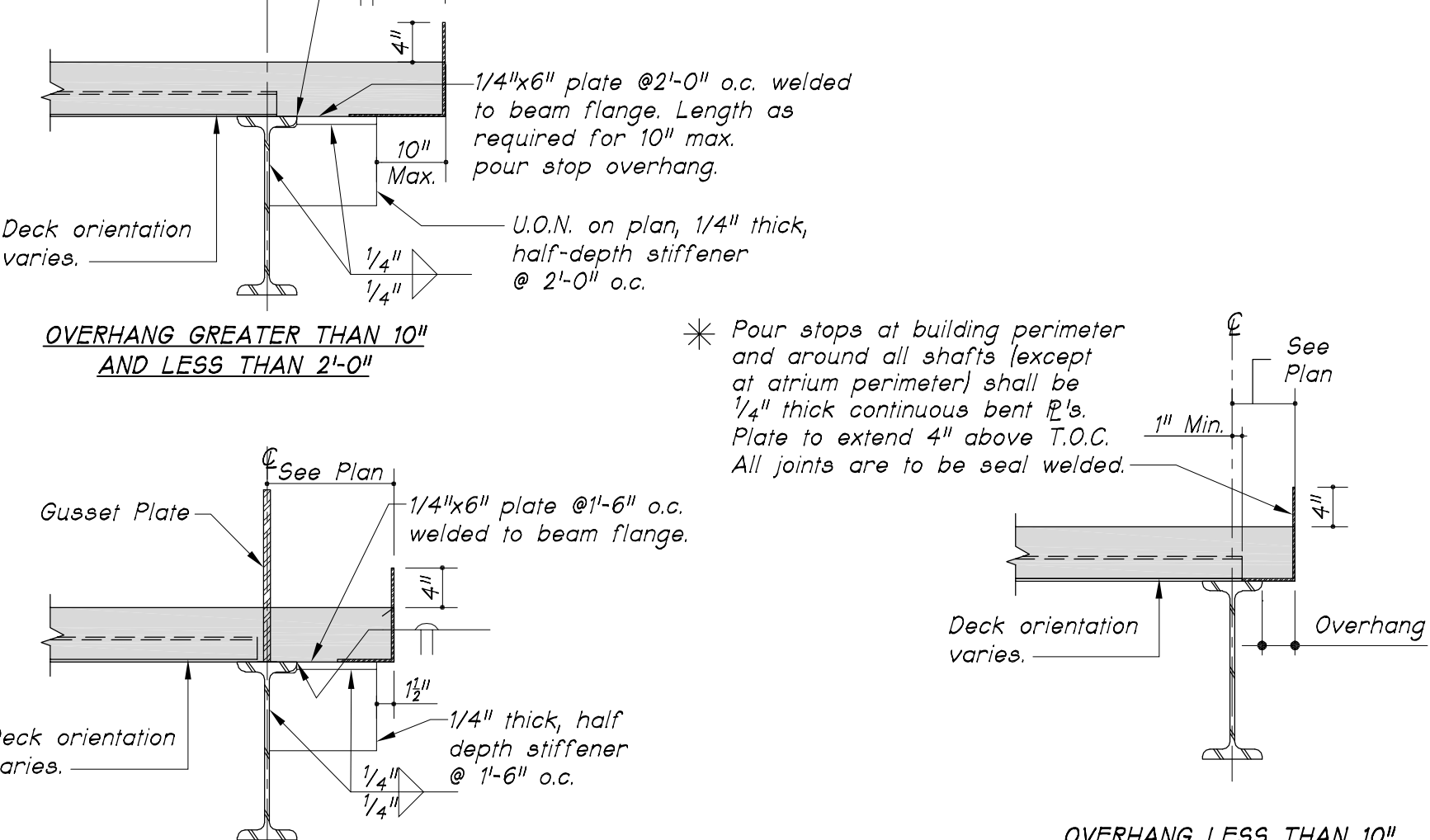
75-17 DECK SUPPORT AT PERIMETER COLUMNS



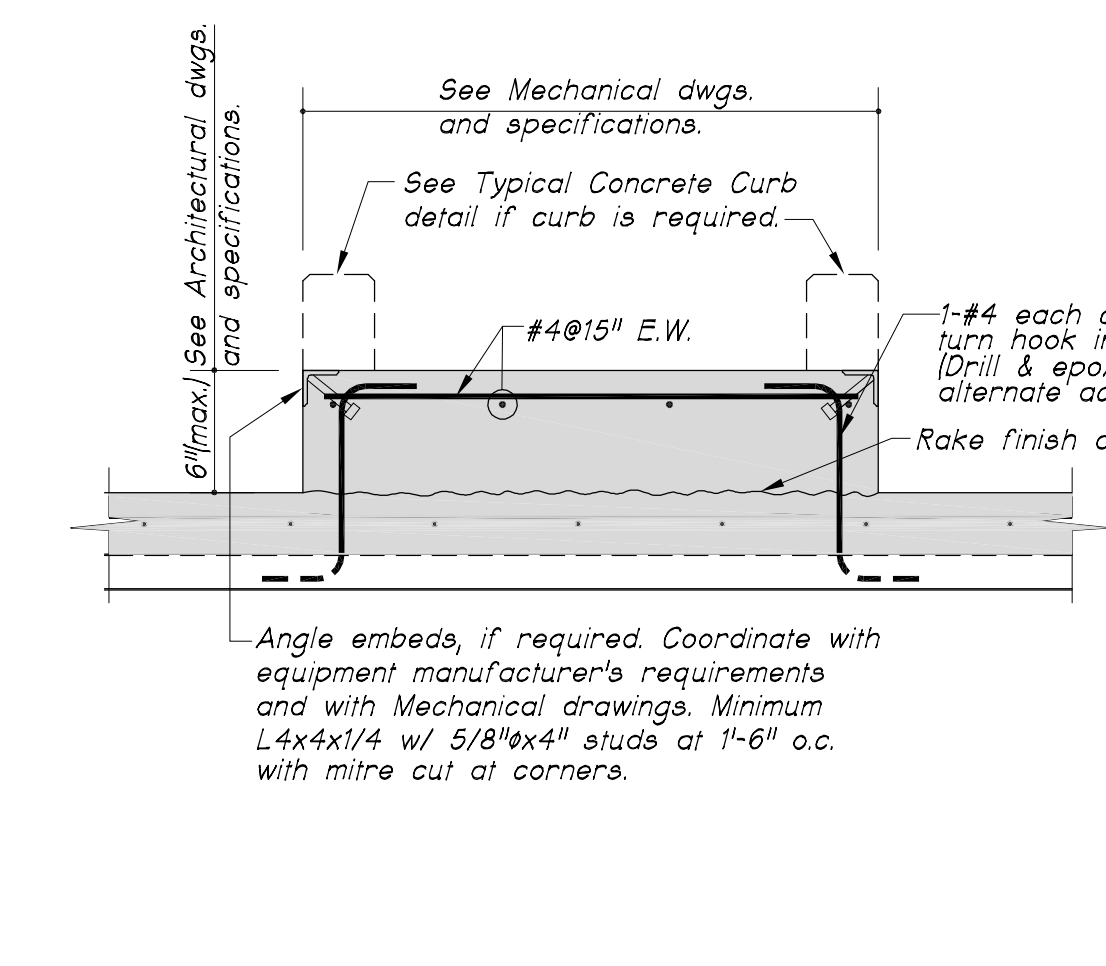
75-18 CONSTRUCTION JOINT AND SHEAR STUD LAYOUT



75-19 SLAB EDGE AT FLOOR OPENING ON ONE SIDE OF BEAM



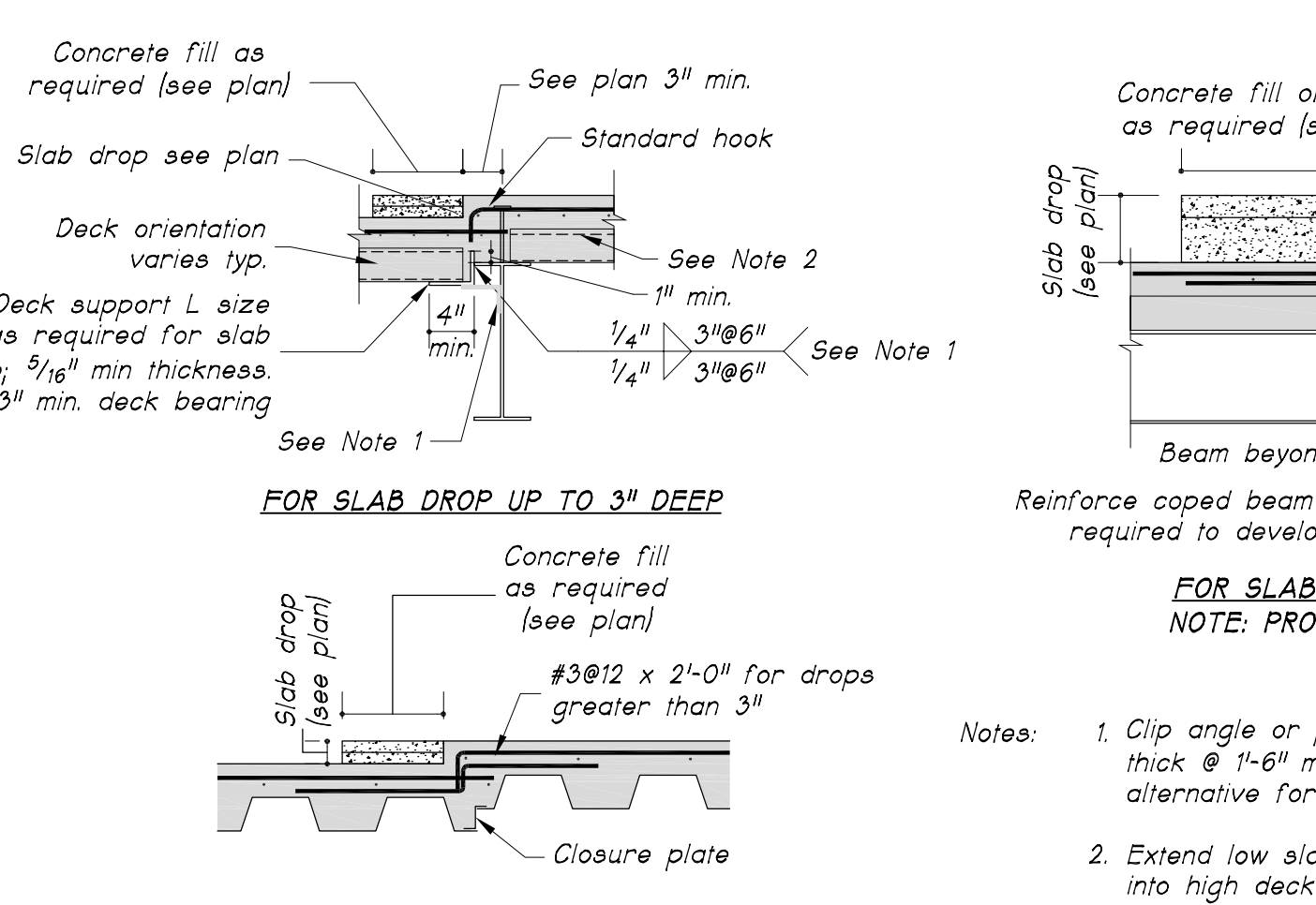
75-20 SLAB EDGE WITH OPENINGS ON BOTH SIDES OF BEAM



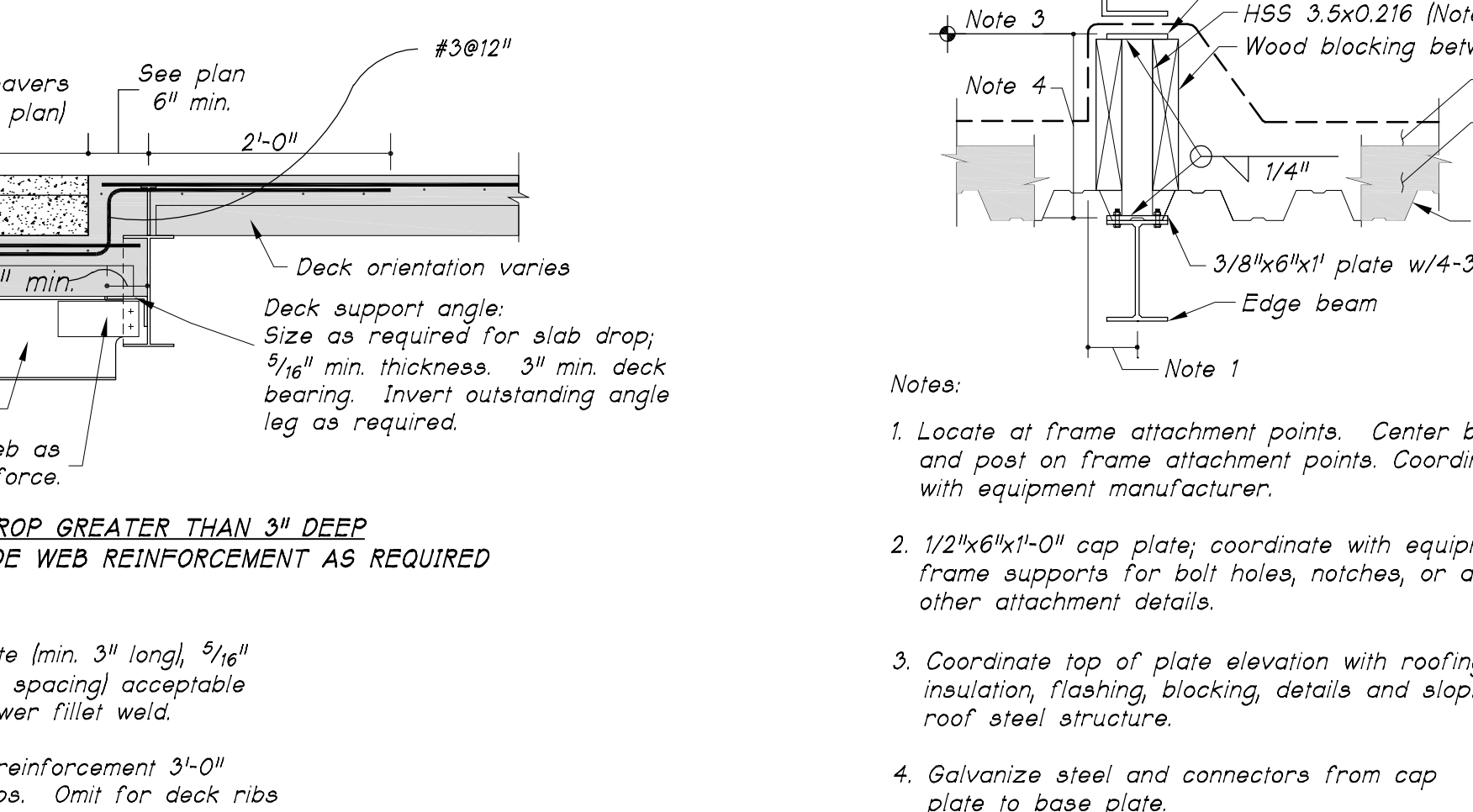
75-21 TYPICAL SLAB EDGE SUPPORT DETAIL

75-22 HOUSEKEEPING PAD ON COMPOSITE SLAB

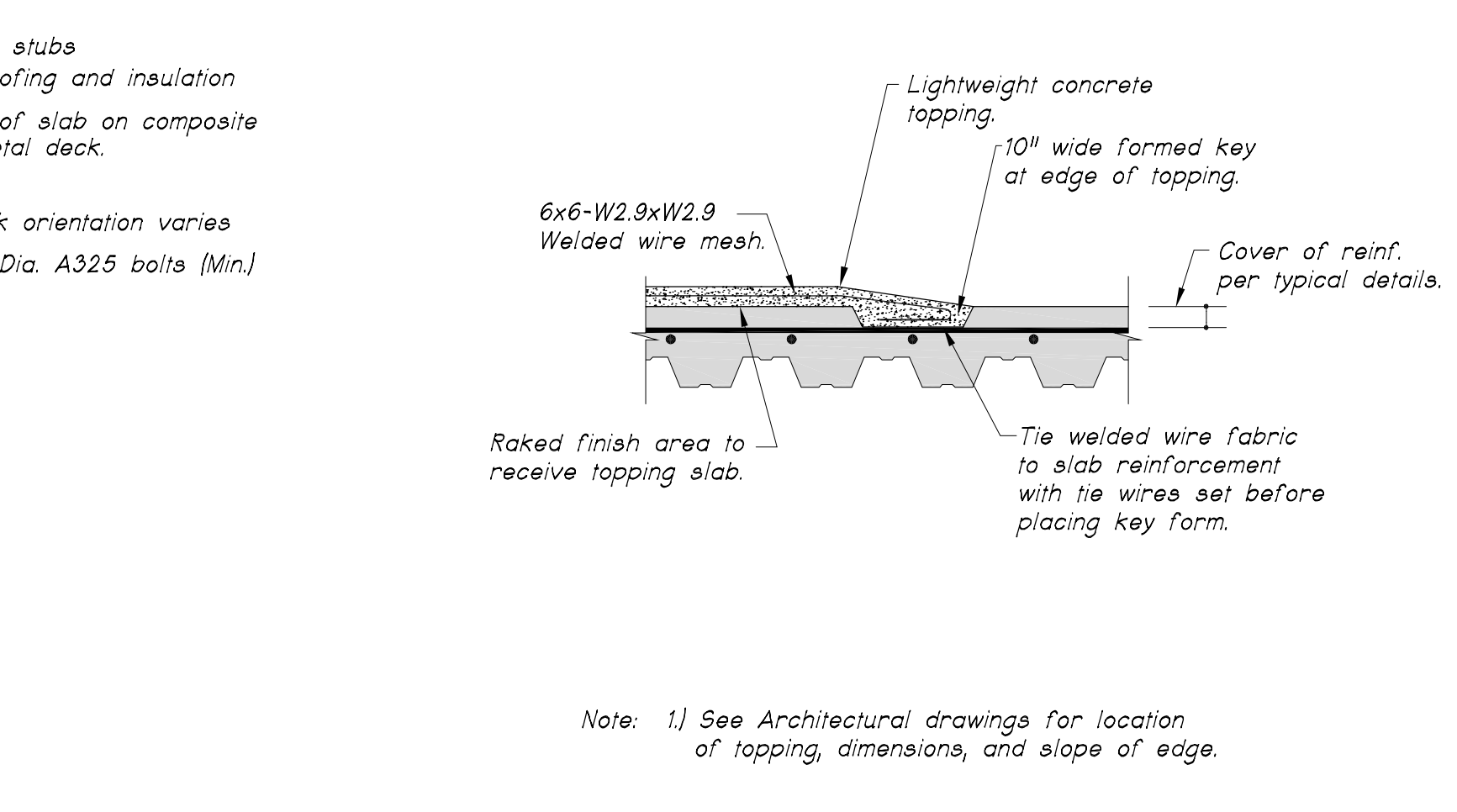
75-23 CONCRETE CURB DETAIL



75-24 SLAB DROP, DECK AND REINFORCING DETAILS



75-25 ROOF EXHAUST SUPPORT DETAIL



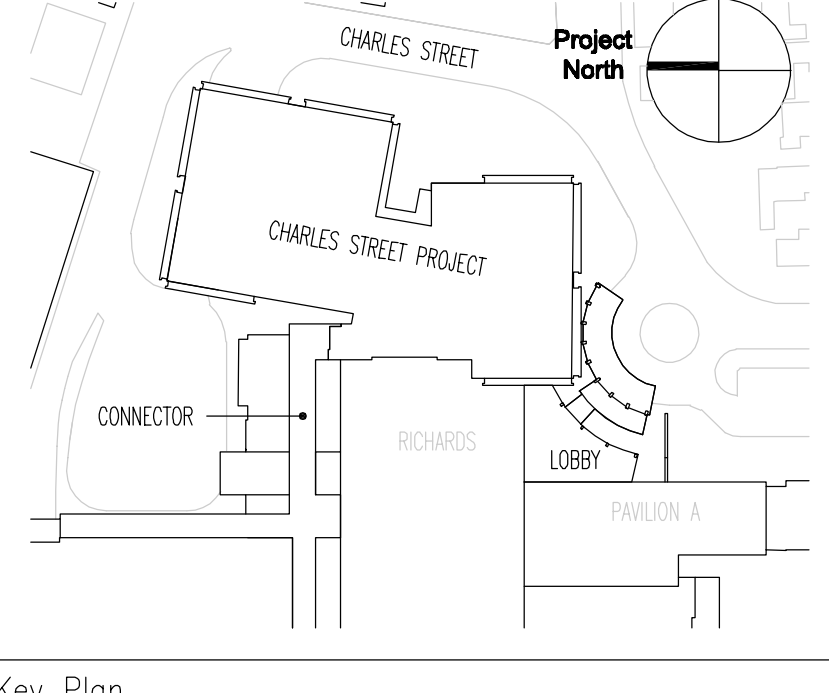
75-26 SLOPED TOPPING SLAB

General Notes:

SGH
Simpson Gumpertz & Heger Inc.
Consulting Engineers
Boston, MA 41 Sejan Street, Building 1, Suite 500, Waltham, MA 02453
San Francisco, CA 222 Sutter Street, Suite 300, San Francisco, CA 94108-4443
Washington, DC 1355 Piccard Drive, Suite 220, Rockville, MD 20850
Telephone: (781) 907-9000
Facsimile: (781) 907-9009
Telephone: (415) 406-3700
Facsimile: (415) 406-3550
Telephone: (301) 417-0999
Facsimile: (301) 417-9825

FOR PERMIT ONLY - NOT FOR CONSTRUCTION

PERMIT: 09/24/04 PERMIT SET - NOT FOR CONSTRUCTION
ISSUE LOG



TRO
ARCHITECTURAL PLANNING ENGINEERING INTERIOR DESIGN
The Ritchie Organization
80 Bridge Street
Newton, MA 02458-1154
617-969-9400

Maine Medical Center
Charles Street Project
Portland, Maine MMC Project No. 21841

Drawing Title
TYPICAL STEEL DETAILS
(Sheet 2 of 2)

Commission No.	4673	Date Issued	
Scale	AS NOTED	Sheet Number	
Drawn By	KMG/SK		
Approved By	JHT/JMT		
Revised	L/2000/20984.00/		
Copyright	© 2004	The Ritchie Organization	

S103