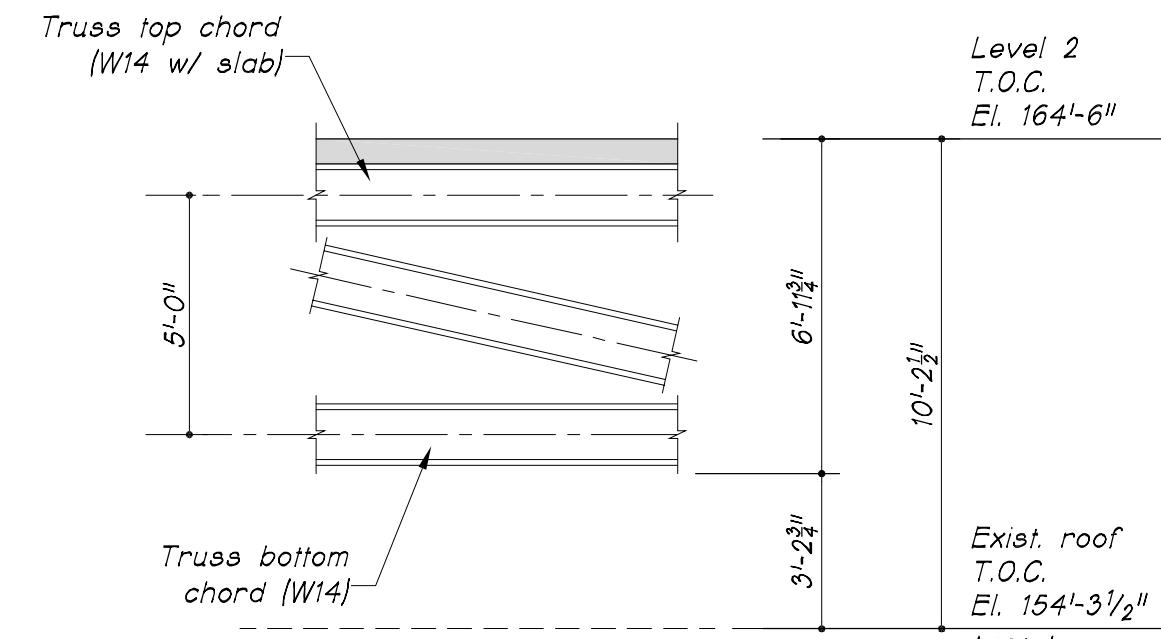
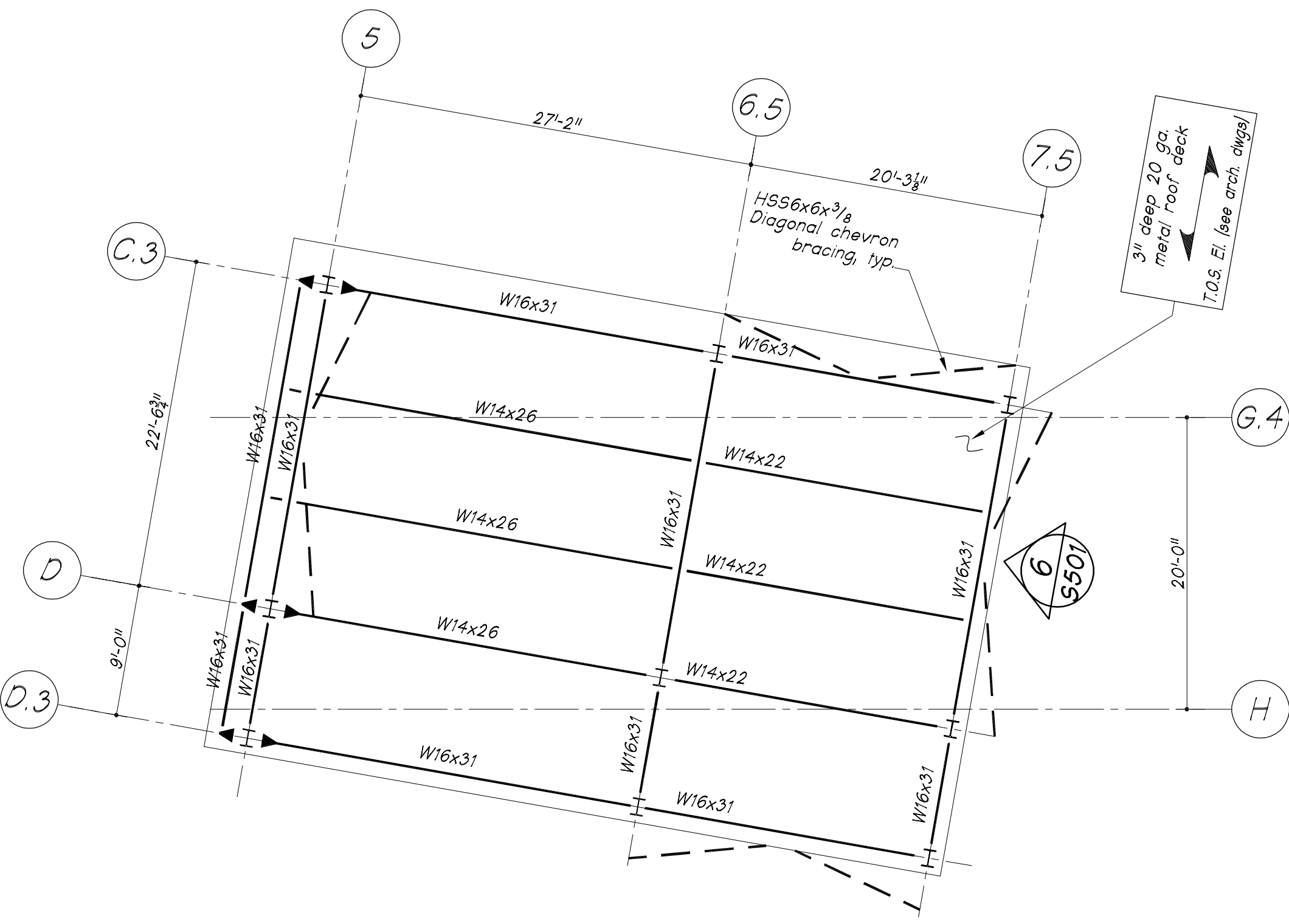


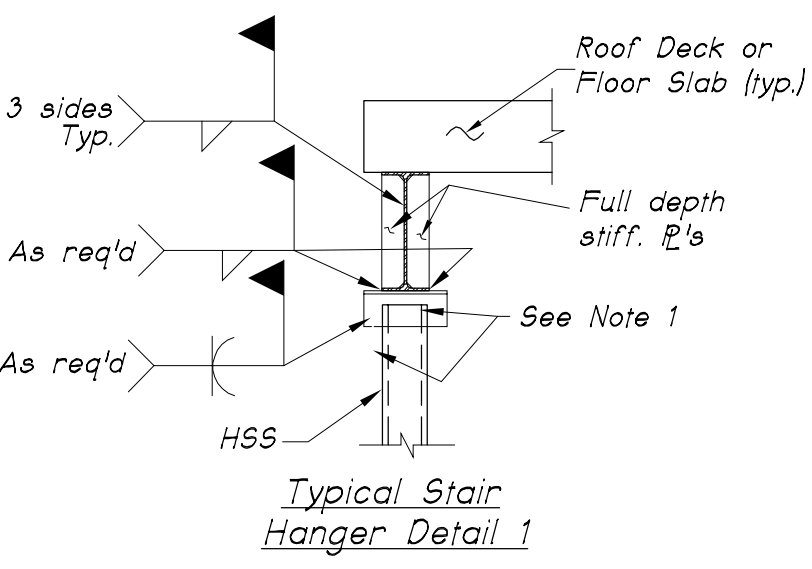
1 TRUSS ELEVATION ALONG 8-LINE (9-LINE SIM)
1/8" = 1'-0"



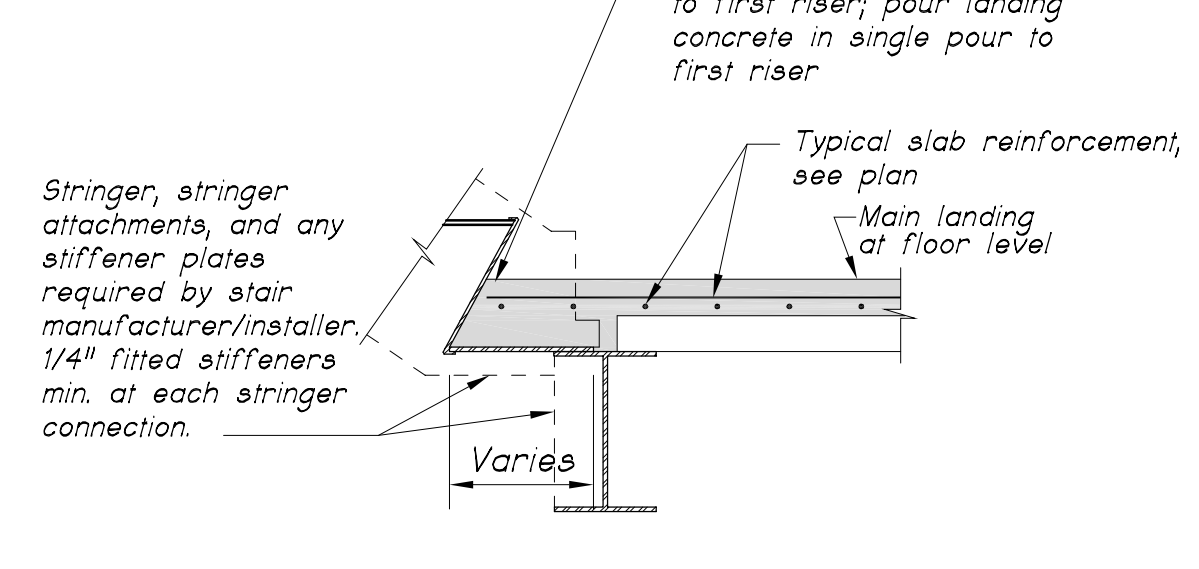
A DETAIL
1/4" = 1'-0"



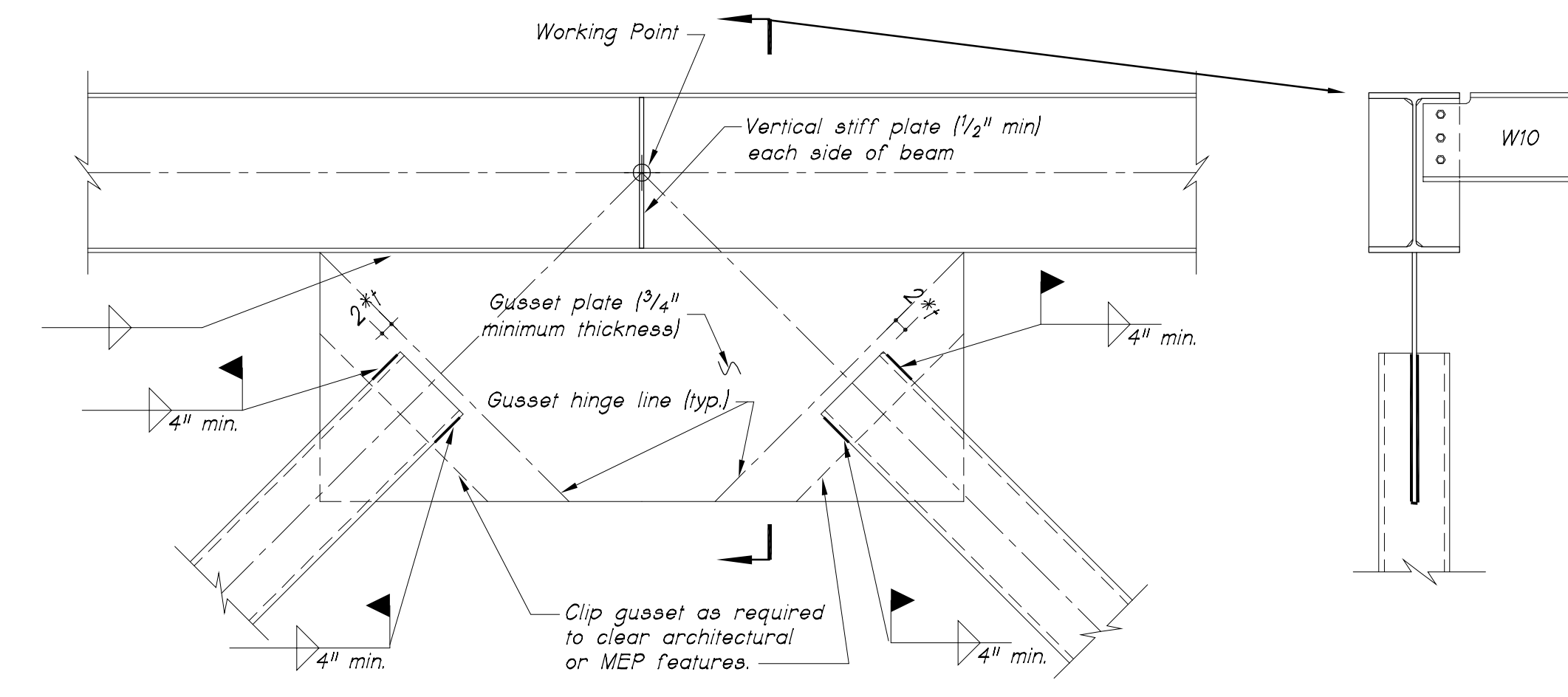
2 ELEVATOR HEADHOUSE FRAMING PLAN
1/8" = 1'-0"



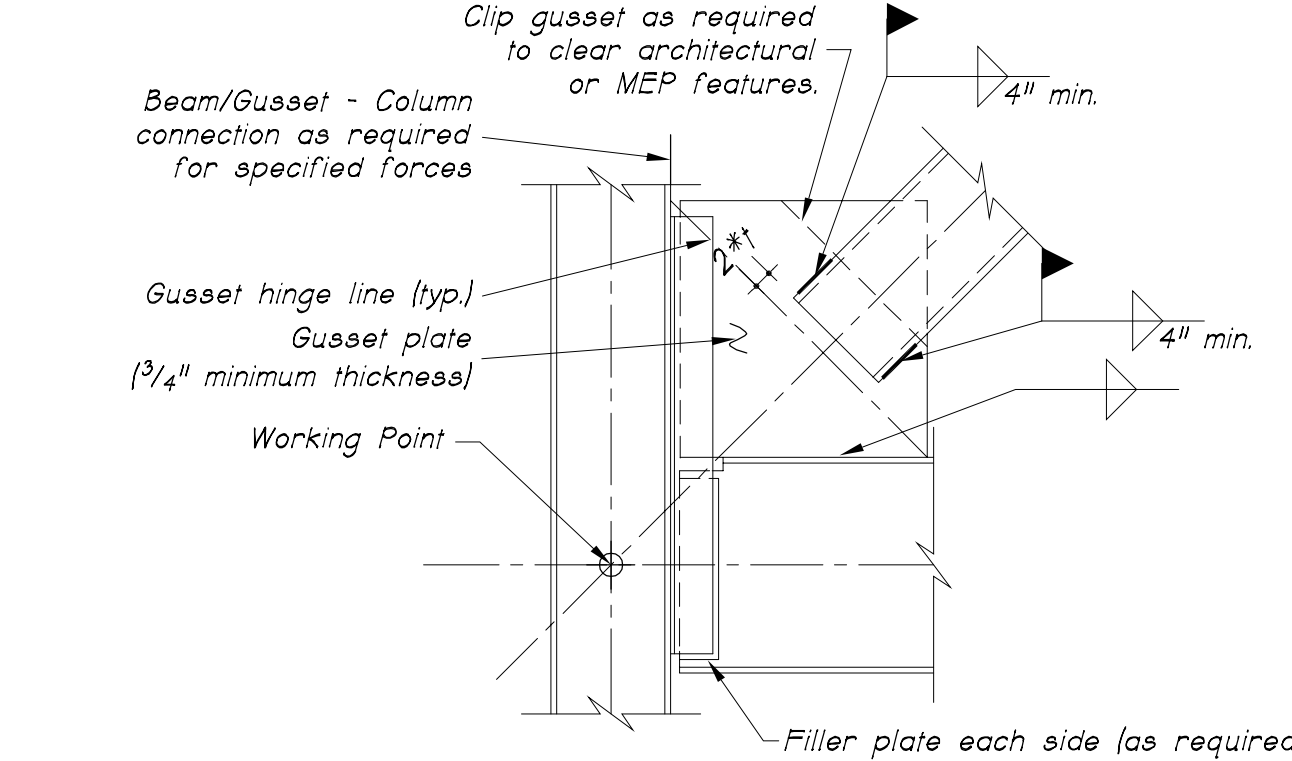
4 STAIR HANGER DETAIL
1/4" = 1'-0"



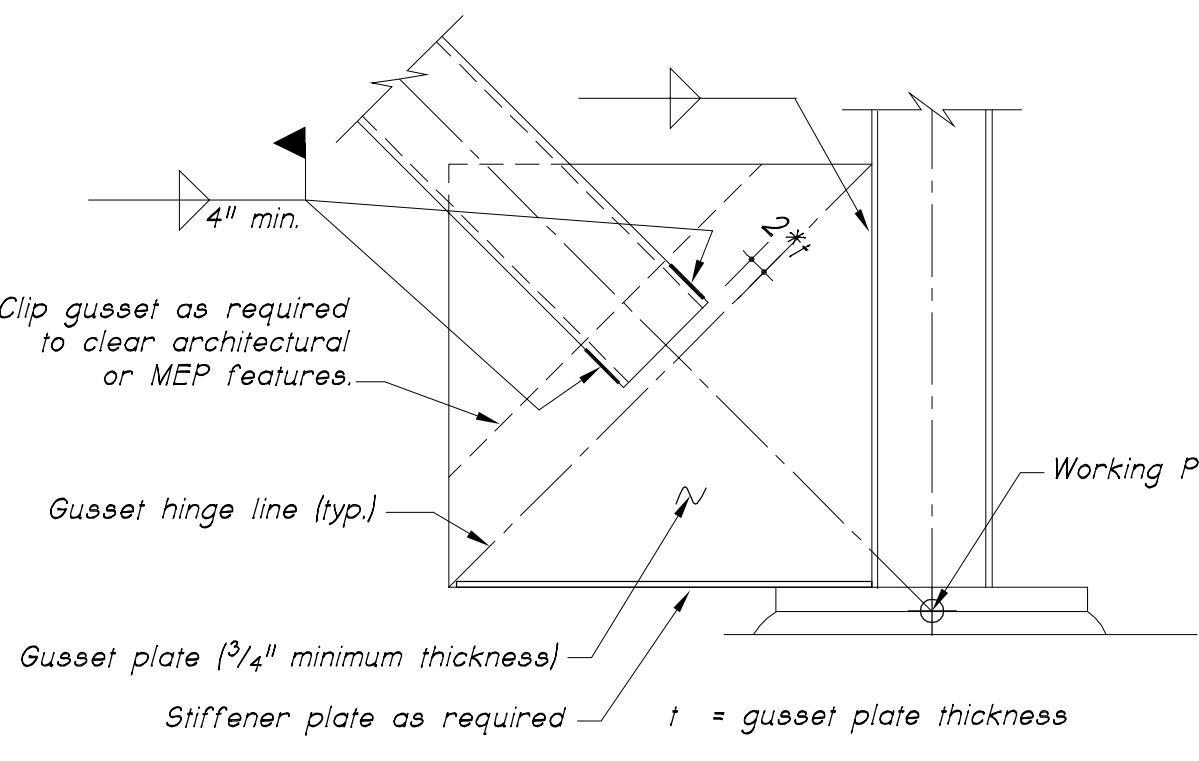
5 STAIR HEADER BEAM DETAIL
1/4" = 1'-0"



TYPICAL BRACE-BEAM CONNECTION

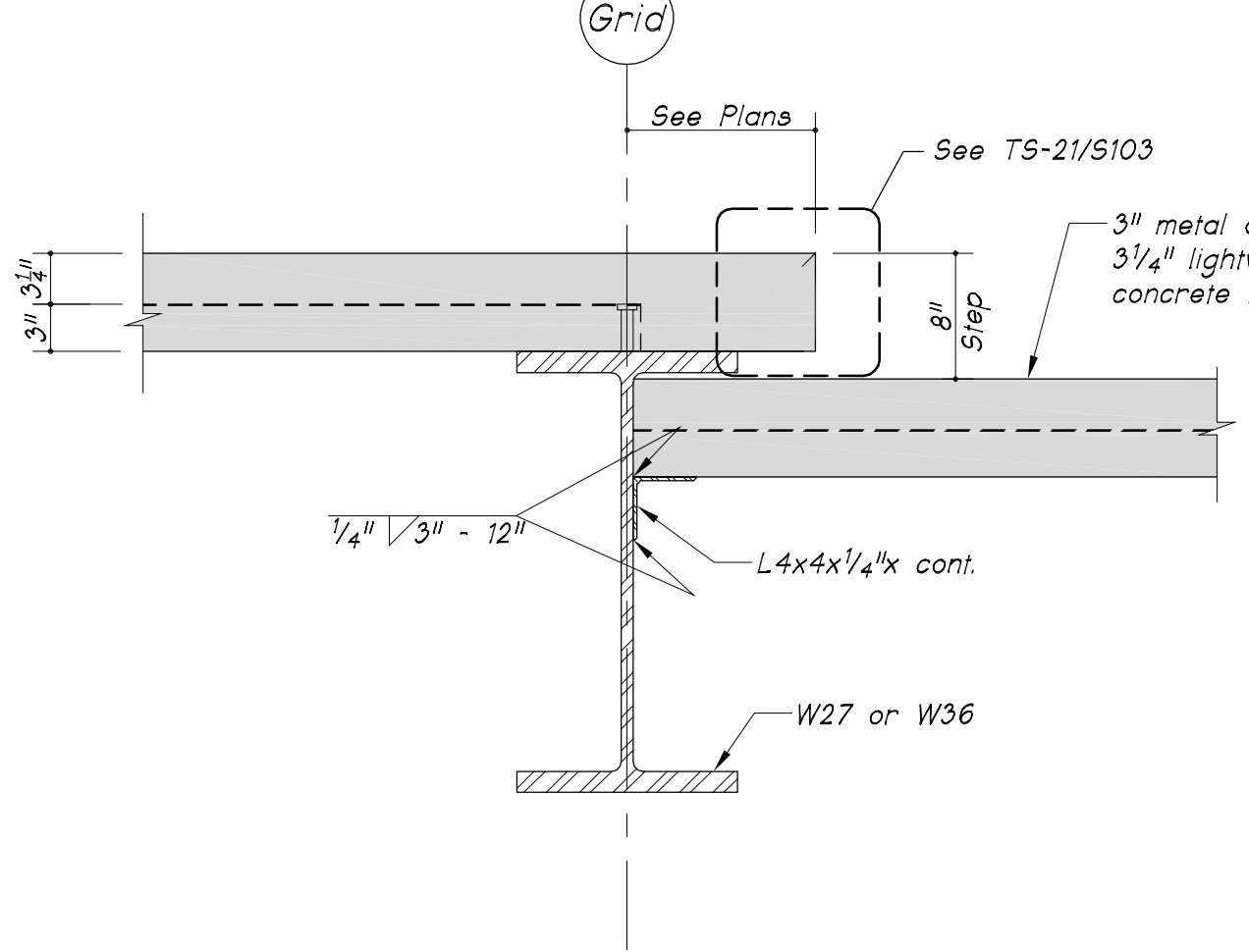


TYPICAL BRACE-BEAM/COLUMN CONNECTION

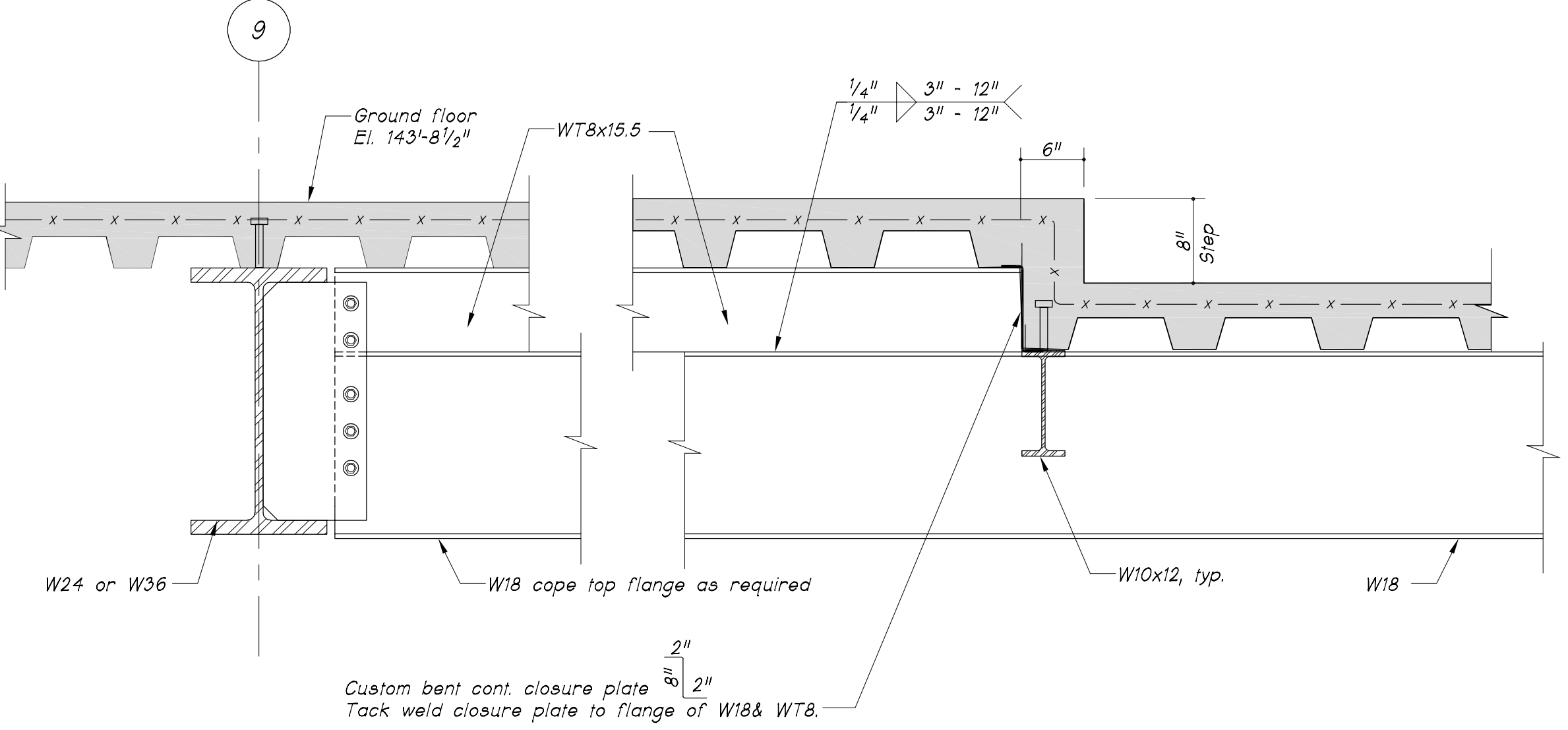


TYPICAL BRACE-COLUMN BASE CONNECTION

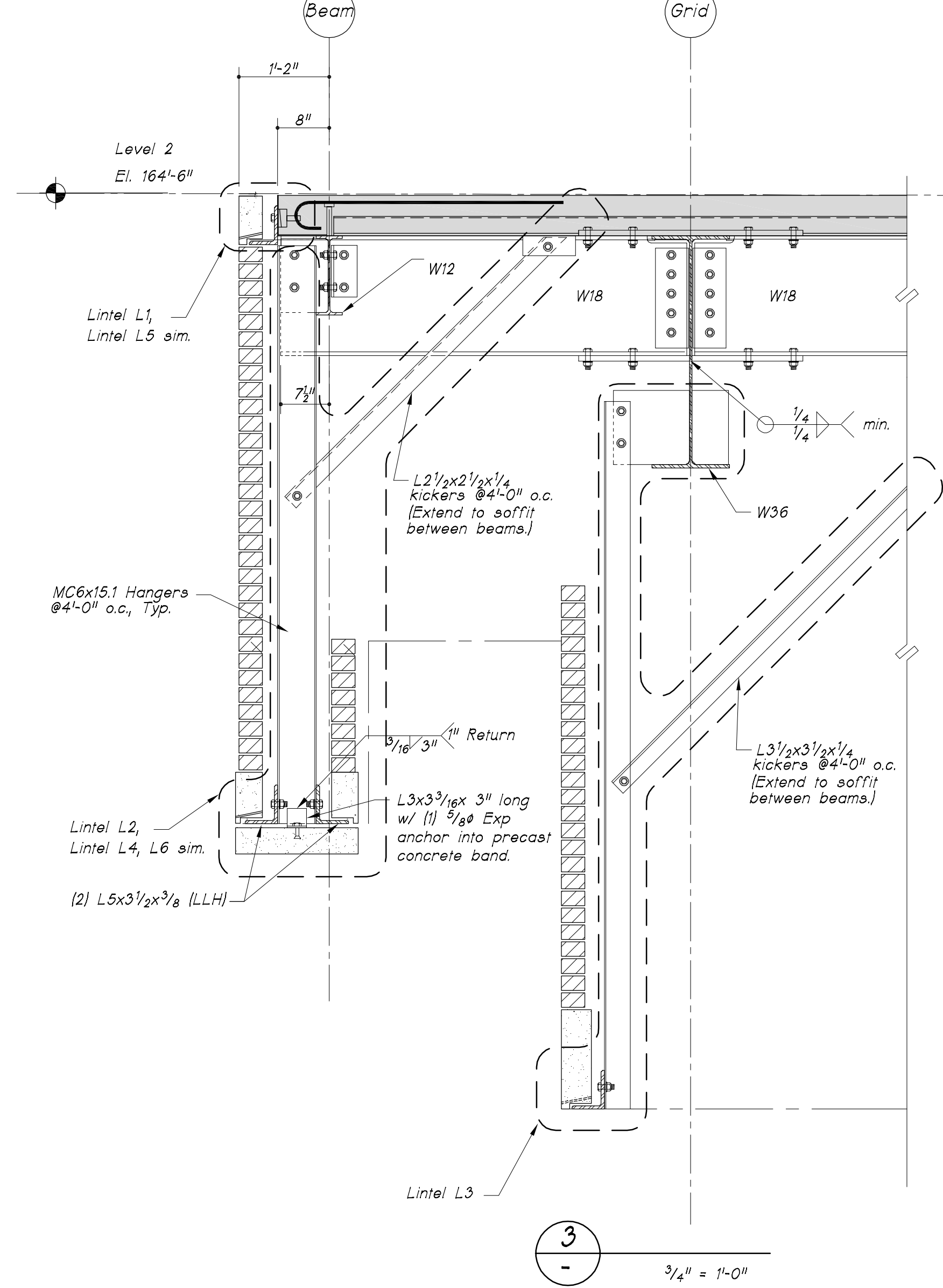
6 WELDED TUBE STEEL BRACE DETAILS
1/4" = 1'-0"



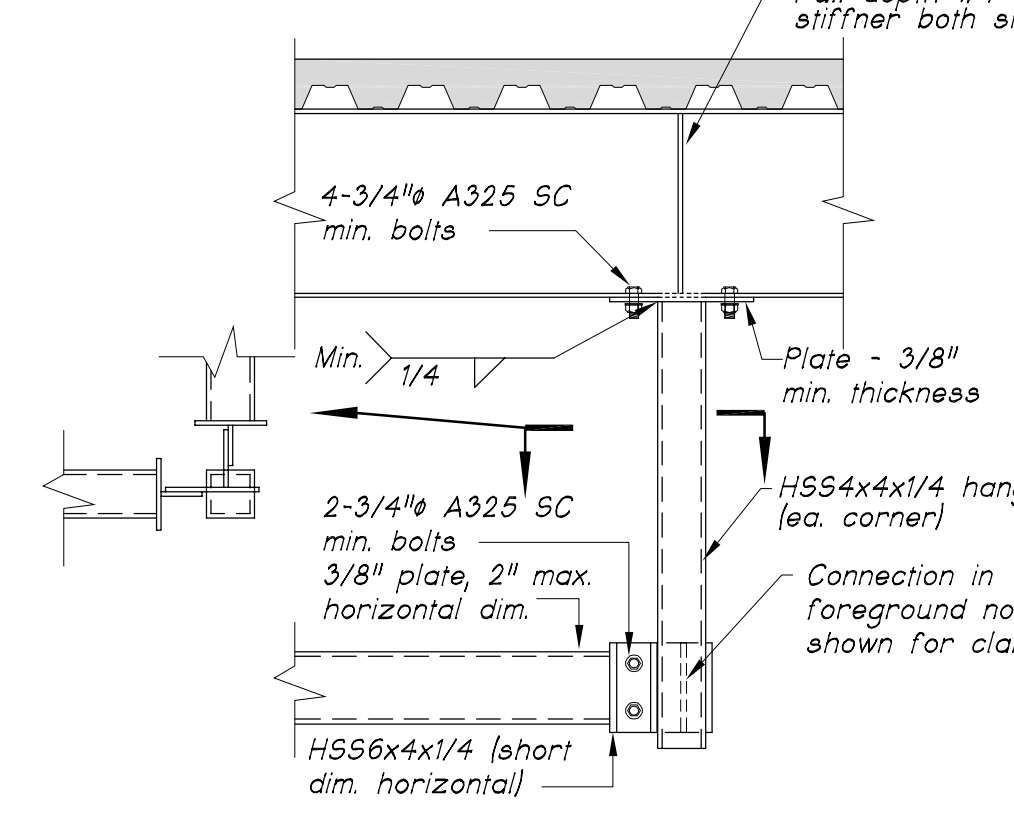
11 SECTION
1/4" = 1'-0"



10 SECTION
1/4" = 1'-0"



7 ELEVATOR SILL DETAIL
1/4" = 1'-0"



8 INTERMEDIATE ELEVATOR RAIL SUPPORT
1/4" = 1'-0"

LINTEL SCHEDULE				
Lintel Type	Lintel Size	Hangers	Diagonal Braces (Kickers)	Fasteners
L1	L5x3 1/2x3/8			3/8" wedge inserts @ 2'-0" o.c.
L2	L2 1/2x3 1/2x3/8	MC6x15.1 @ 4'-0" o.c.	L2 1/2x2 1/2x3/8 @ 4'-0" o.c.	3/8" A325X bolts as shown
L3	L5x3 1/2x3/8	L4x4x3/8 @ 4'-0" o.c.	L3 1/2x3 1/2x3/8 @ 4'-0" o.c.	3/8" A325X bolts as shown
L4	L5x3 1/2x3/8	L4x4x3/8 @ 4'-0" o.c.	L2 1/2x2 1/2x3/8 @ 4'-0" o.c.	3/8" A325X bolts as shown
L5	L5x3 1/2x3/8			3/8" wedge inserts @ 2'-0" o.c.
L6	L5x3 1/2x3/8	L4x4x3/8 @ 4'-0" o.c.	L2 1/2x2 1/2x3/8 @ 4'-0" o.c.	3/8" A325X bolts as shown

NOTES:
1. See plans for lintel locations.
2. See Detail 3/S501 for additional information.

9 LINTEL SCHEDULE
1/4" = 1'-0"

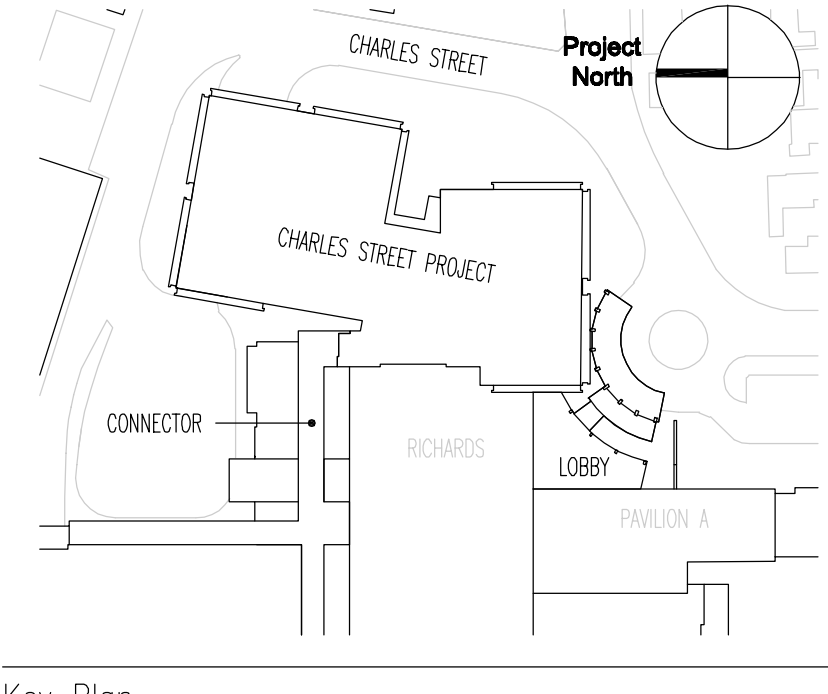
General Notes:

SGH
Simpson Gumpertz & Heger Inc.
Consulting Engineers
Boston, MA 41 Sejan Street, Building 1, Suite 500, Waltham, MA 02453
San Francisco, CA 222 Sutter Street, Suite 300, San Francisco, CA 94108-4445
Washington, DC 1365 Piccard Drive, Suite 220, Reston, MD 20186

Telephone: (781) 907 9000
Facsimile: (781) 907 9009
Telephone: (415) 498 3700
Facsimile: (415) 498 3550
Telephone: (301) 417 0999
Facsimile: (301) 417 9825

FOR PERMIT ONLY - NOT FOR CONSTRUCTION

PERMIT: 09/24/04 PERMIT SET - NOT FOR CONSTRUCTION
ISSUE LOG

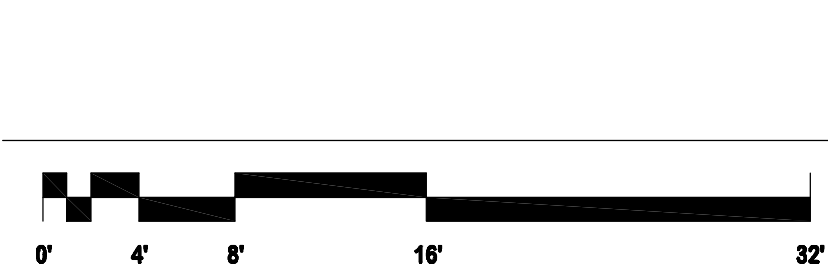


Key Plan

TRO
ARCHITECTURE
PLANNING
ENGINEERING
INTERIOR DESIGN
The Ritchie Organization
80 Bridge Street
Newton, MA 02458-1134
617-969-9400

Maine Medical Center
Charles Street Project
Portland, Maine MMC Project No. 21841

Drawing Title
STEEL SECTIONS/ELEVATIONS



Commission No. 4673 Date Issued
Scale AS NOTED Sheet Number
Drawn By KMG/SK
Approved By JHT/JMT
File Name: L:\2000\20984.00\
Copyright © 2004 The Ritchie Organization

S501