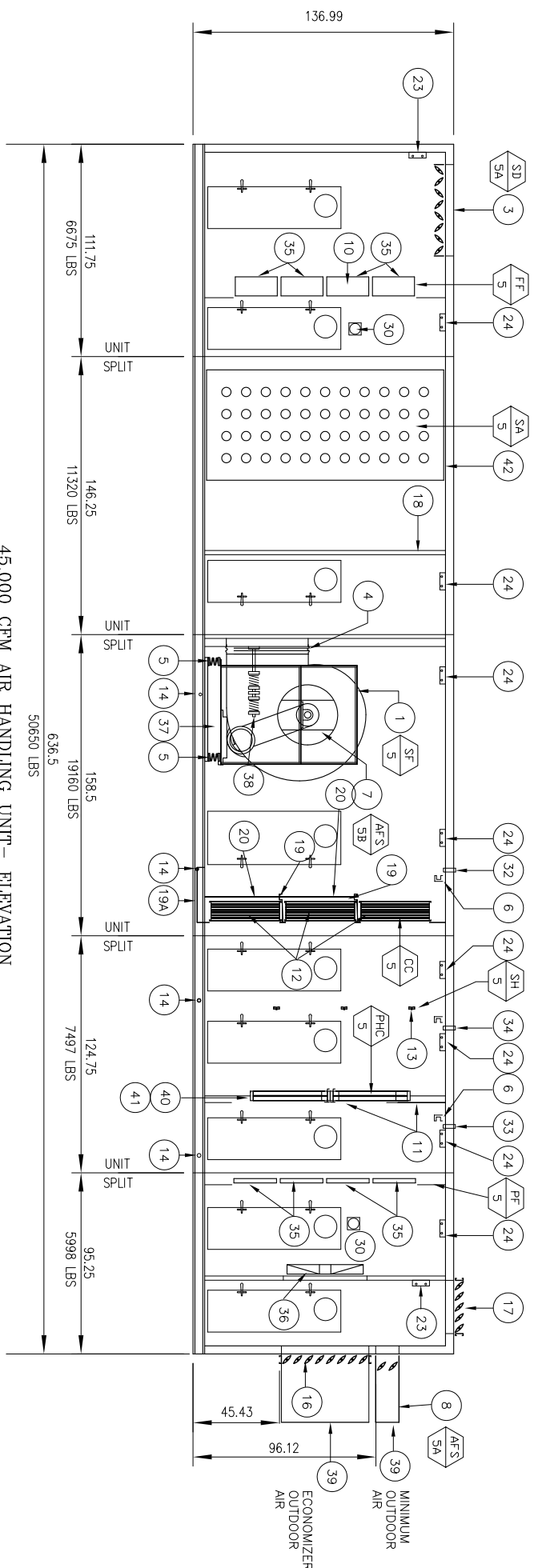


45,000 CFM AIR HANDLING UNIT - PLAN
1/2" = 1'-0"



45,000 CFM AIR HANDLING UNIT - ELEVATION
1/2" = 1'-0"

- AIR HANDLING UNIT AHU - KEYED NOTES:**
1. SUPPLY FAN (SF-5): DOUBLE WITH DOUBLE INLET. AIRFLOW CONTROLS. FAN. SEE FAN SCHEDULE.
 2. FAN INLET DAMPERS (BY FAN WIR.)
 3. SUPPLY AIR OPENING: 1350A WITH OPPOSED BLADE SPACE AND CONTROL DAMPER BY AEC CONNECTION.
 4. FLEXIBLE CONNECTION (BY FAN WIR.)
 5. FAN SPRING-TYPE VIBRATION SOLUTIONS.
 6. STRUCTURAL PROVISIONS INSIDE OF UNIT FOR FIELD PIPE HANGING. REFER TO RECOMMENDATIONS.
 7. SUPPLY FAN AIR FLOW STATION. SEE AIR FLOW STATION SCHEDULE.
 8. MINIMUM O.A. DAMPERS WITH INTERIOR AIR FLOW STATION (AFS-5A): 14412. SEE AIR FLOW STATION SCHEDULE.
 9. PRE-FILTER (PF-5): 24" x 24" x 1" EFFICIENCY. ONE EFFICIENT CARTRIDGE-TYPE FILTER MODULE REQUIRED. SEE FILTER SCHEDULE.
 10. FINAL FILTER (FF-5): (CA) 20" x 24" x 1" DEEP. ONE EFFICIENT CARTRIDGE-TYPE FILTER MODULE REQUIRED. SEE FILTER SCHEDULE.
 11. STEAM PIPING SCHEDULE FOR STEAM COIL PIPING. SEE STEAM COIL SCHEDULE.
 12. COIL PIPING SCHEDULE FOR STEAM COIL PIPING. SEE STEAM COIL SCHEDULE.
 13. HANDOPER (SH-5): SEE STEAM HANDOPER SCHEDULE.
 14. COILS: SEE STEAM PIPING SCHEDULE FOR HANDOPER PIPING.
 15. COILS: SEE STEAM PIPING SCHEDULE FOR HANDOPER PIPING.
 16. REMOVABLE PANELS FOR FAN AND COIL REMOVAL.
 17. R.A. DAMPERS: SEE DAMPER SCHEDULE.
 18. AIR FLOW DISTRIBUTER BATTLE DESIGNED AND SIZED TO MAINTAIN EQUAL FLOW ACROSS FINAL FILTERS.
 19. INTERMEDIATE COOLING COIL DAMPERS.
 20. 1" DOWN FAN DOWN-SPOUT. MINIMUM (1) 8" SPACED COOLING COIL. (4) RECORDED TONN.
 21. ACCESS DOOR: REMOVABLE STEEL PANELS. 24" x 24" x 1/2" x 4" TYP. INSULATED ACCESS DOOR WITH 10"x10" ACCESS DOOR. SEE ACCESS DOOR SCHEDULE.
 22. ACCESS DOOR: INSOLE SECTION (SPRING OUT). 24" x 24" x 1/2" x 4" TYP. INSULATED ACCESS DOOR WITH 10"x10" ACCESS DOOR. SEE ACCESS DOOR SCHEDULE.
 23. WINDHOLE-PROOF FLUORESCENT LIGHT FIXTURE: 12" x 4" x 24" L. DOUBLE LAMP.
 24. WINDHOLE-PROOF FLUORESCENT LIGHT FIXTURE: 12" x 4" x 24" L. DOUBLE LAMP.
 25. WINDHOLE-PROOF LIGHT SWITCH: WIND TO FLUORESCENT LIGHT FIXTURES (SEE #23 AND #24).
 26. 120 VOLT ELECTRICAL POWER DUKES RECEPTACLE (TYPICAL FOR 3)
 27. AEC JUNCTION BOX.
 28. JUNCTION BOX: NEW. 1 ENCLOSURE. 120 VOLT POWER AND LIGHTING CONNECTION.
 29. SUPPLY AIR FLOW STATION: 14412. SEE AIR FLOW STATION SCHEDULE.
 30. MECHANICAL FILTER GAUGE FLUSH MOUNTED ABOVE DOOR.
 31. AIR FLOW STATION GAUGE CABINET: (1) CABINET TO HOUSE (3) AIRFLOW STATION GUIDES FOR #15-5A, #15-5B AND #15-5C).
 32. PIPING CONNECTIONS FOR COOLING COILS: PROVIDE A PAIR OF OPENINGS FOR LINES TO FEED COILS. SEE STEAM PIPING SCHEDULE FOR PIPING LAYOUT.
 33. PIPING CONNECTIONS FOR STEAM COILS: PROVIDE AN OPENING FOR LINES TO FEED COILS. SEE STEAM PIPING SCHEDULE FOR PIPING LAYOUT.
 34. PIPING CONNECTIONS FOR HANDOPER: SEE STEAM PIPING SCHEDULE FOR PIPING LAYOUT.
 35. FILTER SECTION STIFFENERS.
 36. AIR BENDERS: 3 @ 42" DIA.
 37. CONCRETE MERTHA BASE.
 38. FAN SPRING-TYPE THINSET RESTRAINTS.
 39. STRUCTURAL LIGHTING FIXTURE: PROVIDE A PAIR OF OPENINGS FOR LINES TO FEED LIGHTING FIXTURES. SEE LIGHTING SCHEDULE FOR PIPING LAYOUT.
 40. MINIMUM 2" MIN. CLEARANCE FROM FLOOR TO BOTTOM OF EQUIPMENT PROVISIONS ACCOUNT FOR STEAM PIPING SCHEDULE FOR STEAM COIL PIPING.
 41. FLOOR: COORDINATE WITH NOTE 40 ABOVE.
 42. SEE SCHEDULE FOR SOUND ATTENUATION.

NOT FOR CONSTRUCTION

DATE: 01/24/24

PROJECT: 24-001

REVISION: 1

BY: [Signature]

FOR PERMIT ONLY - NOT FOR CONSTRUCTION

Scale: 0' 0" 1' 0" 2' 0" 3' 0" 4' 0" 5' 0" 6' 0" 7' 0" 8' 0" 9' 0" 10' 0"

Scale: 0' 0" 1' 0" 2' 0" 3' 0" 4' 0" 5' 0" 6' 0" 7' 0" 8' 0" 9' 0" 10' 0"

TRO

ARCHITECTURE

PLANNING

ENGINEERING

DESIGN

1700 State Street

Portland, ME 04101-1200

Phone: 603.761.1200

Fax: 603.761.1201

Website: tro.com

By: [Signature]

Checked By: [Signature]

Approved By: [Signature]

Date: 01/24/24

Project: 24-001

Sheet: H605

Maine Medical Center

Charles Street Project

Portland, Maine

MHC Project No. 2184

Sheet: H605