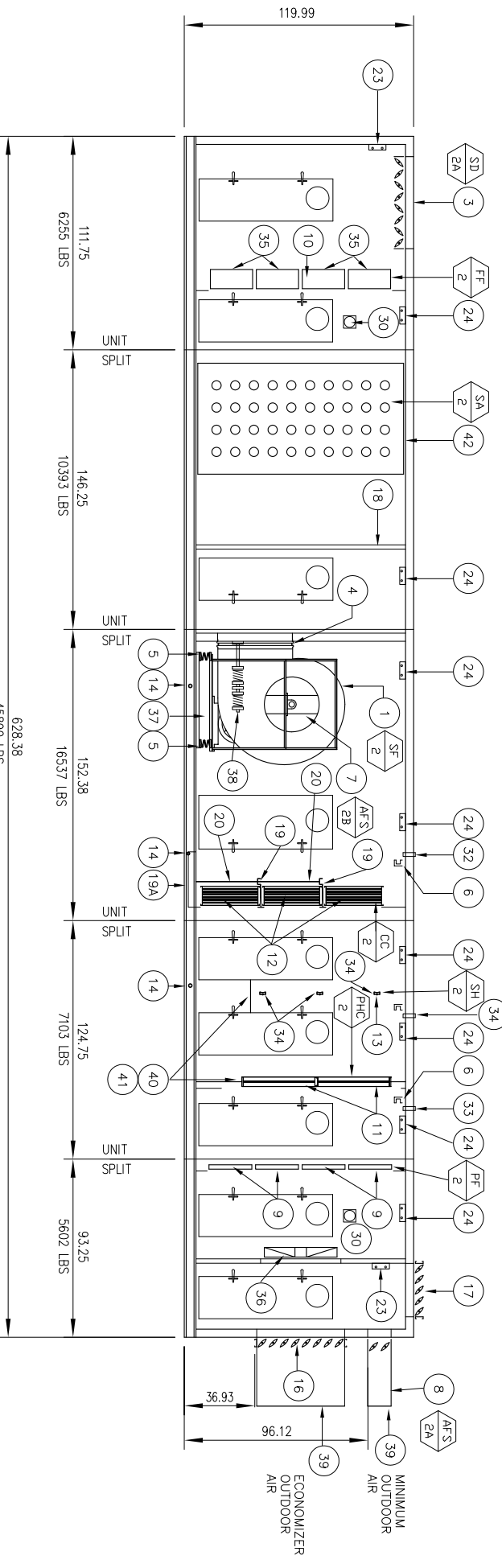


40,000 CFM AIR HANDLING UNIT - PLAN
1/8" = 1'-0"



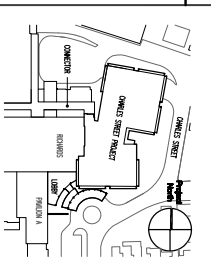
40,000 CFM AIR HANDLING UNIT - ELEVATION
1/8" = 1'-0"

AIR HANDLING UNIT KEYED NOTES:

1. SUPPLY FAN (8'-2) DOUBLE WITH DOUBLE INLET. AIRFLOW CONTROLLABLE FAN.
2. FAN INLET DAMPER (BY FAN W/PI).
3. SUPPLY AIR OPENING, 1200MM WITH OPPOSED BLADE SMOKE DAMPER (BY A/C CONNECTION).
4. RETURN CONNECTION (BY FAN W/PI).
5. FAN SPRING-TYPE VIBRATION ISOLATORS.
6. STRUCTURAL PROVISIONS INSIDE OF UNIT FOR FIELD PIPE HANGING. REFER TO SPECIFICATIONS.
7. SUPPLY FAN AIR FLOW STATION (AFS-28, 20). SEE AIR FLOW STATION SCHEDULE.
8. MINIMUM O.A. DAMPER WITH INTERNAL AIR FLOW STATION (AFS-28, 14412). SEE AIR FLOW STATION SCHEDULE.
9. RETURN (8'-2) (2) 24" x 24" x 24" 4" DEEP, 94% EFFICIENT CARTRIDGE-TYPE FILTER SECTIONS REQUIRED. SEE FILTER SCHEDULE.
10. FINAL FILTER (8'-2) (2) 24" x 24" x 24" 4" DEEP, 94% EFFICIENT CARTRIDGE-TYPE FILTER SECTIONS REQUIRED. SEE FILTER SCHEDULE.
11. STEAM HEAT EXCHANGER (SHE) (2) COILS REQUIRED. SEE STEAM COIL SCHEDULE.
12. STEAM HEAT EXCHANGER (SHE) (2) COILS REQUIRED. SEE STEAM COIL SCHEDULE.
13. COOLING COIL (CC-2) (6) COILS REQUIRED. SEE COOLING COIL SCHEDULE. SEE CHILLED WATER PIPING SCHEDULE FOR COOLING COIL PIPING, DOWN STREAM COIL. FULL.
14. HEATREX (8'-2) (2) COILS REQUIRED. SEE STEAM HEAT EXCHANGER SCHEDULE.
15. CONDENSATE TRAP THROUGH HEATREX OF UNIT AND PROVIDE THROTTLED OPEN, 1/2" DIA. AND DRAIN PIPE FOR COOLING COIL. DRAIN PAN ONLY. BY MECHAN. CONNECTION. SEE DETAIL.
16. REMOVABLE PANELS FOR FAN AND COIL REMOVAL.
17. 100% ECONOMIZER OPENING AND PARALLEL BLADE CONTROL DAMPER, 144" x 48".
18. AIR FLOW PARTNER BATTLE DESIGNED AND SIZED TO MAINTAIN EQUAL FLOW ACROSS FINAL FILTERS.
19. INTERMEDIATE COOLING COIL. DRAIN PAN.
20. MAIN COOLING COIL. DRAIN PAN. DRAIN PAN SHALL EXTEND A MINIMUM OF 1" DOWN STREAM OF DISCHARGE FACE OF COOLING COIL.
21. ACCESS DOOR, DISCHARGE SECTION (GANG NO. 24) 48" x 37 1/4" x 4" THK INSULATED ACCESS DOOR WITH 15" x 10" DOUBLE FRAME WINDOW AND STATIC PRESSURE PROBE POINT.
22. ACCESS DOOR, INLET SECTION (GANG NO. 24) 48" x 37 1/4" x 4" THK INSULATED ACCESS DOOR WITH 10" x 10" DOUBLE FRAME WINDOW AND STATIC PRESSURE PROBE POINT.
23. WEATHER-PROOF FLUORESCENT LIGHT FIXTURE, 12" W x 24" L, DOUBLE LAMP.
24. WEATHER-PROOF FLUORESCENT LIGHT FIXTURE, 12" W x 48" L, DOUBLE LAMP.
25. WEATHER-PROOF LIGHT SWITCH W/LED TO FLUORESCENT LIGHT FIXTURES (SEE #23 AND #24).
26. 120 VOLT ELECTRICAL POWER PANEL RESISTANCE (TYPEAL FOR 3).
27. A/C JUNCTION BOX.
28. JUNCTION BOX, ROOM 1 ENCLOSURE, 120 VOLT POWER AND LIGHTING CONNECTION.
29. SUPPLY FAN MOTOR DISCONNECT, W/IE FAN POWER TO DISCONNECT SWITCH ON EXTERIOR OF UNIT. W/IE TO REMOVE W/IE BY DIVISION 18.
30. MAGNETIC FILTER GAUGE FLUSH MOUNTED ABOVE DOOR.
31. AIR FLOW STATION GAUGE CANNEL (1) CANNEL TO INLET (1) AIRFLOW STATION GAUGES (FOR AFS-28, AFS-28 AND AFS-20).
32. PIPING CONNECTIONS FOR COOLING COILS. PROVIDE 3/4" DIA. OF DRIP PANS FOR LEAKS TO FEED TO ELIMINATE SOUND ATTENUATORS BY SHEETMETAL CONNECTION. SEE SECTIONS FOR MORE DETAILS.
33. PIPING CONNECTIONS FOR STEAM COILS. PROVIDE AN OPENING FOR PIPE TO FEED COILS. SEE STEAM PIPING SCHEDULE FOR SIZES AND PIPING LAYOUT.
34. FIELD CONNECTIONS FOR HANGERS. PROVIDE AN OPENING FOR PIPE TO FEED CONNECTION. PROVIDE 3/4" DIA. OF DRIP PANS IN ADDITION TO WALL LAYOUT.
35. FILTER SECTION STIFFENERS.
36. AIR BENDERS, 3 @ 4" DIA.
37. CONCRETE MENTAL BASE.
38. FAN SPRING-TYPE THIRST RESTRAINTS.
39. SHEETMETAL DUCT, 3"-7" MINIMUM LENGTH TO PENETRAL WALL, THEN ADDITIONAL SHEETMETAL TO ELIMINATE SOUND ATTENUATORS BY SHEETMETAL CONNECTION. SEE SECTIONS FOR MORE DETAILS.
40. CLEANING FOR STAIN TRAYS AND CONNECTION TO CONDENSATE TRAYS.
41. PROVIDE PIPE RESTRAINTS FOR 1/2" DIA. APPROXIMATELY 24" ABOVE A/U.
42. SEE SCHEDULE FOR SOUND ATTENUATOR.

General Notes:

DATE: 08/24/04
 DRAWN BY: [Signature]
 CHECKED BY: [Signature]
 SCALE: AS SHOWN
 NOT FOR CONSTRUCTION
 FOR PERMIT ONLY



Maine Medical Center
 Charles Street Project
 Portland, Maine
 MMC Project No. 21814

HVAC AIR HANDLING UNIT
 AHU-2 AND 3
 DETAILS

Contract No.	4573	Draw Number	
Scale	AS SHOWN	Sheet Number	
Drawn By	TR	Checked By	
Project No.	4573001	Project Name	
Revision	0	Revision	
Scale	1/8" = 1'-0"	Scale	
Sheet No.	H604	Sheet No.	