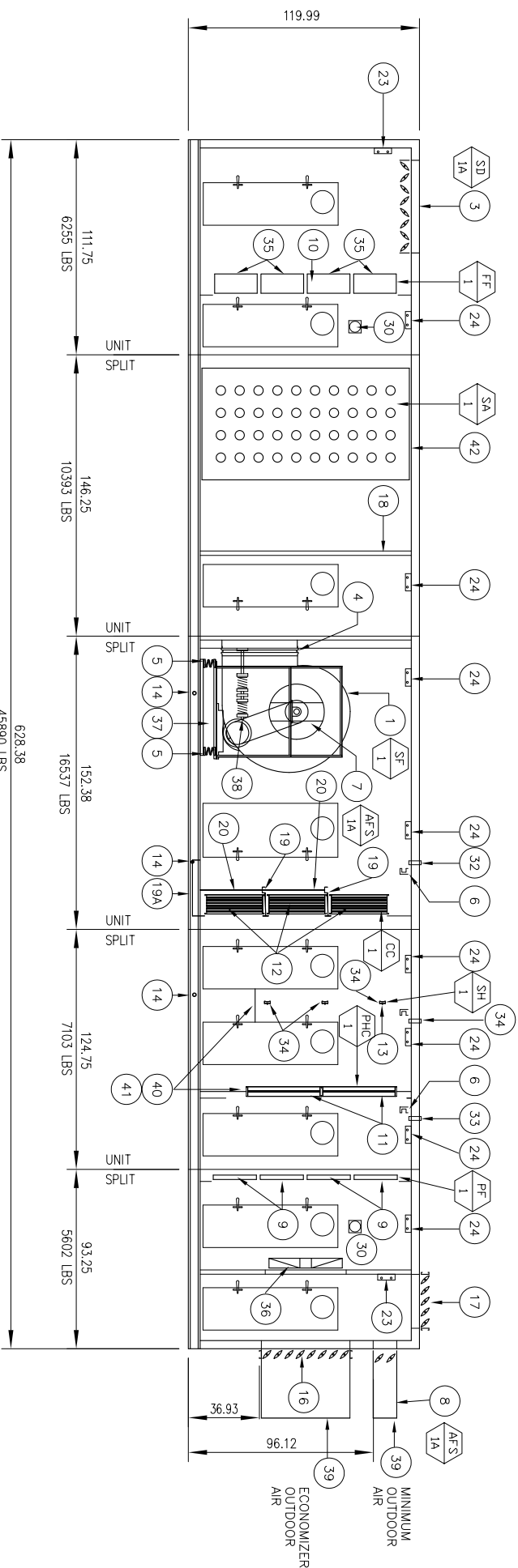


40,000 CFM AIR HANDLING UNIT - PLAN
1/8" = 1'-0"



40,000 CFM AIR HANDLING UNIT - ELEVATION
1/8" = 1'-0"

AIR HANDLING UNIT KEYED NOTES:

1. SUPPLY FAN (SF-1) DOUBLE WING, DOUBLE INLET, AIRFLOW CONTROLLING FAN. SEE FAN SCHEDULE.
2. FAN INLET GUARD (BY FAN MFR.)
3. SUPPLY AIR OPENING, 120X48 WITH OPPOSED BLADE SMOKE DAMPER (BY A/C CONTRACTOR).
4. FLEXIBLE CONNECTION (BY FAN MFR.)
5. FAN SPRING-TYPE VIBRATION ISOLATORS.
6. STRUCTURAL PROVISIONS MADE OF UNIT FOR FIELD PIPE HANGING. REFER TO SPECIFICATIONS.
7. SUPPLY FAN AIR FLOW STATION (AFS-1B, 1C). SEE AIR FLOW STATION SCHEDULE.
8. MINIMUM O.A. DAMPERS WITH METEOR. AIR FLOW STATION (AFS-1B, 1C). SEE AIR FLOW STATION SCHEDULE.
9. PRE-FILTER (PF-1) 24" x 24" x 4" BETA, 90% EFFICIENT CARTRIDGE-TYPE FILTER. REFER TO (PF-1) SCHEDULE.
10. FILTER MODULES REQUIRED. SEE FILTER SCHEDULE.
11. STEAM PREHEAT COIL (PHC-1) (4) COILS REQUIRED. SEE STEAM COIL SCHEDULE.
12. COOLING COIL (CC-1) (2) COILS REQUIRED. SEE COOLING COIL SCHEDULE.
13. HANDHELD (SH-1) - SEE STEAM HANDHELD SCHEDULE.
14. CONDENSATE DRAIN PAN (CD) - SEE CONDENSATE DRAIN PAN SCHEDULE.
15. REMOVABLE PANELS FOR FAN AND COIL REMOVAL.
16. 100% ECONOMIZER OPENING AND PARALLEL BLADE CONTROL DAMPER, 144" x 48".
17. 84" ANTI-VIBRATION DAMPER BLADE, 144" x 48".
18. AIR FLOW PARTISER BATTLE DESIGNED AND SIZED TO MAINTAIN EQUAL FLOW ACROSS FINAL FILTERS.
19. INDEPENDENT CONDENSATE COIL DRAIN PAN.
20. 1" DOWN PAN DOWN-SPOUT. MINIMUM (1) PER STACKED COOLING COIL. (4) REQUIRED TOTAL.
21. ACCESS DOOR, DISMOUNT SECTION (SHND 1B), 24" x 24" x 4" THK INSULATED ACCESS DOOR WITH 10"x10" DOUBLE FRAME WINDOW AND STAIN PRESSURE RIGID POOR.
22. ACCESS DOOR, DISMOUNT SECTION (SHND 1C), 24" x 24" x 4" THK INSULATED ACCESS DOOR WITH 10"x10" DOUBLE FRAME WINDOW AND STAIN PRESSURE RIGID POOR.
23. WASHNER-FLOOR FLUORESCENT LIGHT FIXTURE, 12" x 48", DOUBLE LAMP.
24. WASHNER-FLOOR FLUORESCENT LIGHT FIXTURE, 12" x 48", DOUBLE LAMP.
25. WASHNER-FLOOR FLUORESCENT LIGHT FIXTURE, 12" x 48", DOUBLE LAMP.
26. 120 VOLT ELECTRICAL POWER DUPLEX RECEPTACLE (TYPICAL FOR 3)
27. A/C JUNCTION BOX.
28. JUNCTION BOX, NEMA 1 ENCLOSURE, 120 VOLT POWER AND LIGHTING CONNECTION.
29. SUPPLY FAN MOTOR DISCONNECT, THREE POLE THREE PHASE TO DISCONNECT SWITCH.
30. WASHNER-FLOOR FLUORESCENT LIGHT FIXTURE, 12" x 48", DOUBLE LAMP.
31. AIR FLOW STATION GUIDE DAMPER, (1) CABINET TO HOUSE (2) AIRFLOW STATION GUIDES.
32. COILS HANGING ROOF OF AIR HANDLING UNIT, PROVIDE A PAIR OF BRACKETS FOR LINES TO FEED COILS THROUGH ROOF OF AIR HANDLING UNIT TO MAINTAIN PROPER CLEARANCE.
33. THROUGH ROOF OF AIR HANDLING UNIT TO MAINTAIN PROPER CLEARANCE.
34. PIPING CONNECTIONS FOR HANDHELD PREHEAT AIR OPENING FOR PIPE HANGING. REFER TO (PHC-1) SCHEDULE.
35. PIPING CONNECTIONS FOR HANDHELD PREHEAT AIR OPENING FOR PIPE HANGING. REFER TO (PHC-1) SCHEDULE.
36. PIPING CONNECTIONS FOR HANDHELD PREHEAT AIR OPENING FOR PIPE HANGING. REFER TO (PHC-1) SCHEDULE.
37. CONCRETE MENTIA BASE.
38. FAN SPRING-TYPE THRUST RESTRAINTS.
39. STEERING LINK ATTACHMENT POINT TO REMAIN WITH THE EQUIPMENT SCHEDULE.
40. MINIMUM 2" AIR CLEARANCE FROM FLOOR TO BOTTOM OF EQUIPMENT PROVIDING ADEQUATE FLOOR PREPARATION FOR LBS PER APPROXIMATELY 24" ABOVE RAIL.
41. FLOOR PREPARATION WITH LIFT 40 ABOVE.
42. SEE SCHEDULE FOR SCHED AIRFLOW.

PRO
ARCHITECTURE
PLANNING
ENGINEERING
DESIGN
1750 State Street
Portland, ME 04103
Tel: 603.761.1234
Fax: 603.761.1235

Maine Medical Center
Charles Street Project
Portland, Maine
MMC Project No. 21841

**HVAC AIR HANDLING UNIT
AHU-1 AND 4
DETAILS**

Sheet No. **H603**

Scale: 1/8" = 1'-0"

Revision Log:

| NO. | DATE | DESCRIPTION |
|-----|----------|-----------------------------------|
| 1 | 02/12/04 | ISSUED SET - NOT FOR CONSTRUCTION |
| 2 | 02/12/04 | ISSUED LOG |