

- General Notes:
- ALL CONDENSATE RETURN PIPING SHALL BE SCHEDULE 80 WELDED STAINLESS STEEL.
 - TO CONDENSATE COOLER RETURN DRAIN.
 - END OF MAIN DEEP TRAP.
 - UPH FROM HUMIDIFIER.
 - SEE HPS END OF MAIN DEEP TRAP DETAIL.
 - TO FLAT TANK FOR CONTINUATION SEE STEAM SCHEDULES AND DETAILS.
 - HPS CONNECTION SEE STEAM SCHEMATIC FOR CONTINUATION OF PIPING.

INPUT/OUTPUT SUMMARY TABLE - LP PROCESS (CLEAN) STEAM SYSTEM - POT

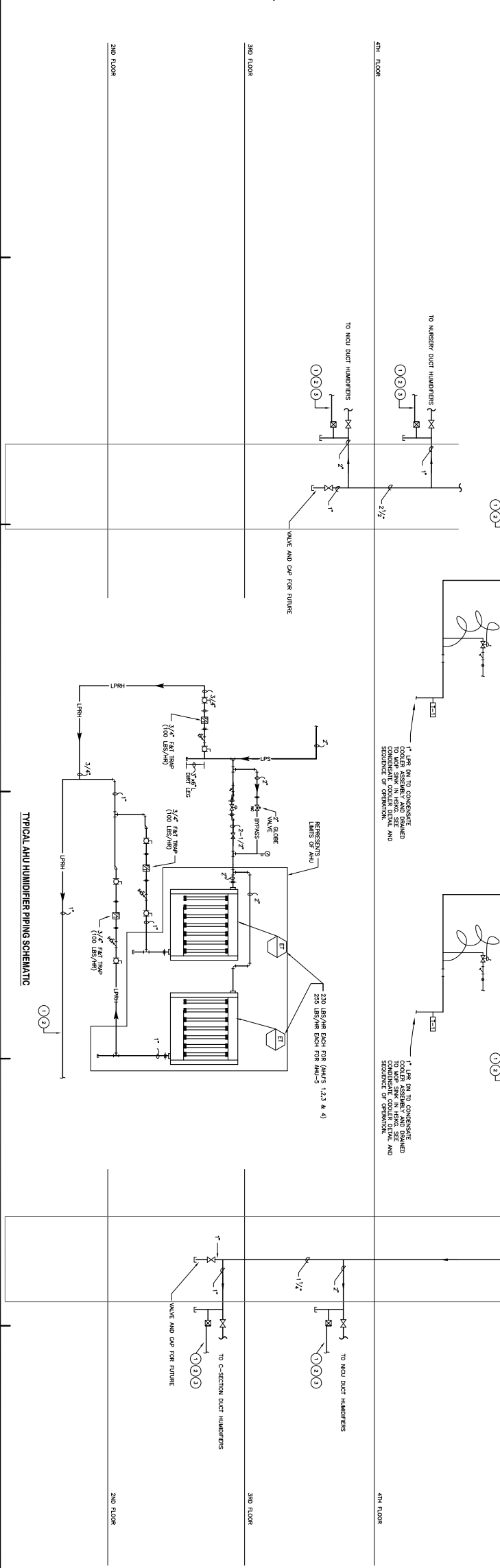
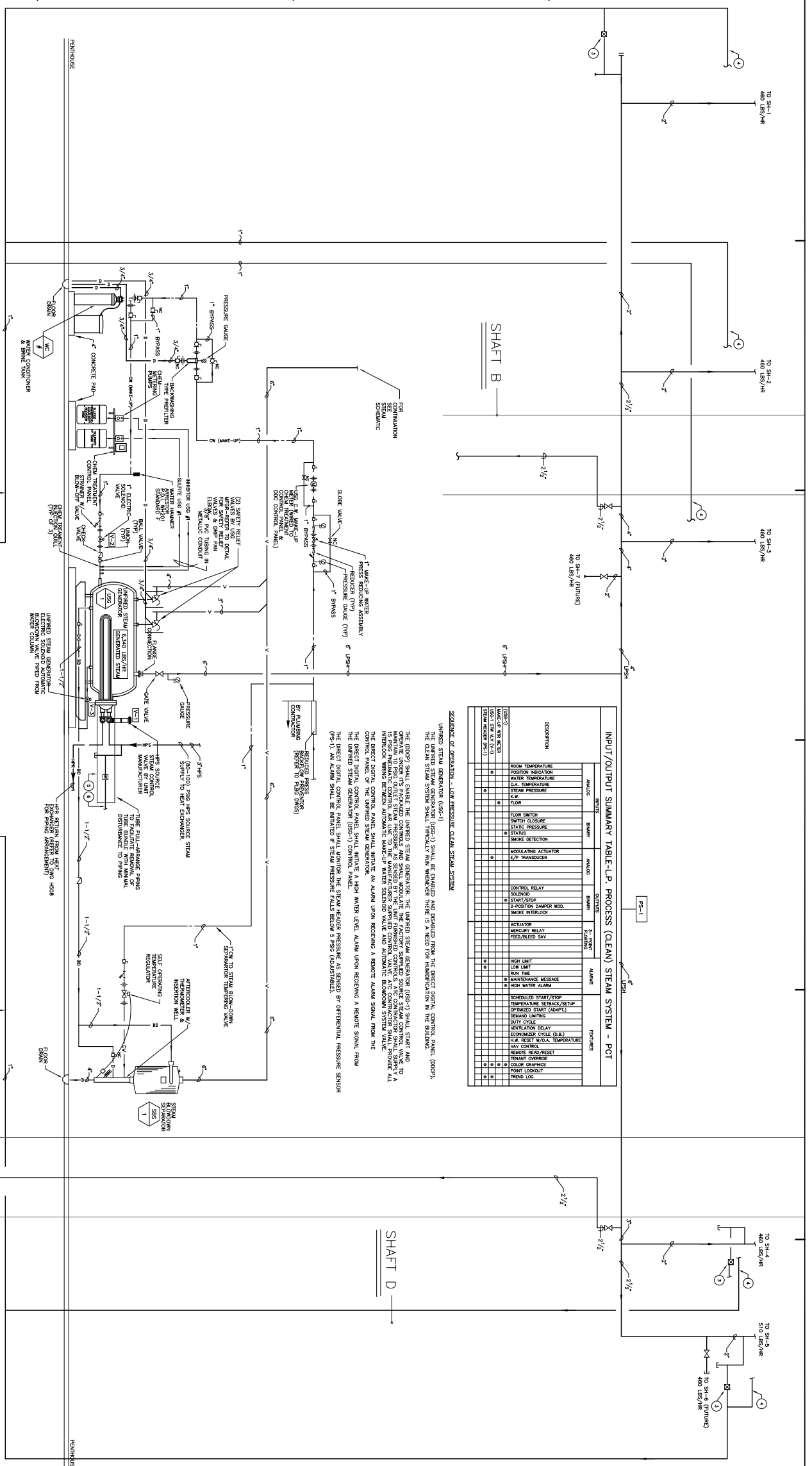
DESCRIPTION	INLET		OUTLET		ALARM	FUNCTIONS
	MANUAL	SHUTTER	MANUAL	SHUTTER		
ROOM TEMPERATURE						
ROOM HUMIDITY						
WATER TEMPERATURE						
STEAM PRESSURE						
STEAM PRESSURE						
STATUS						
SMOKE DETECTOR						
MODULATING ACTUATOR						
CONTROL RELAY						
SOLENOID						
START/STOP						
2-POSITION DAMPER MOD.						
SMOKE KILL/LOCK						
ACTUATOR						
MERCURY RELAY						
FEED/RELEASE VALVE						
HIGH LIMIT						
LOW LIMIT						
RUN TIME						
MAINTENANCE MESSAGE						
HIGH WATER ALARM						
SCHEDULED START/STOP						
TEMPERATURE SETBACK/SETUP						
OPTIMIZED START/STOP						
DEMAND LIMITING						
SHUT DOWN						
VENTILATION DELAY						
ECONOMY CYCLE (ON)						
LOW RESET W/O/A						
HIGH RESET W/O/A						
MANUAL RESET/SET						
SEMIANT OVERDRIVE						
4 COLOR SHIMMER						
FRONT LOCKOUT						
PHONE LOCK						

SEQUENCE OF OPERATION - LOW PRESSURE CLEAN STEAM SYSTEM

UNIBRED STEAM GENERATOR (USG-1) SHALL BE ENABLED AND DISABLED FROM THE DIRECT DIGITAL CONTROL PANEL (DDCP). THE UNIBRED STEAM GENERATOR (USG-1) SHALL BE ENABLED AND DISABLED FROM THE DIRECT DIGITAL CONTROL PANEL (DDCP). THE CLEAN STEAM SYSTEM SHALL TYPICALLY RUN WHETHER THERE IS A NEED FOR HUMIDIFICATION IN THE SOLARON.

THE DDCP SHALL ENABLE THE UNIBRED STEAM GENERATOR. THE UNIBRED STEAM GENERATOR (USG-1) SHALL START AND OPERATE UNDER ITS PACKAGED CONTROLS AND SHALL MODULATE THE FACTORY SUPPLIED SOURCE SOURCE CONTROL VALVE TO A 150PSI INHIBITING CONTROL. AS LONG AS THE MANUFACTURER SUPPLIED CONTROL VALVE AND CONTROL SYSTEM SHALL PROVIDE ALL PROTECTION BETWEEN ADJUNCT WAREHOUSE WAREHOUSE VALVE AND ADJUNCT SCHEMATIC SYSTEM VALVE. THE DIRECT DIGITAL CONTROL PANEL OF THE UNIBRED STEAM GENERATOR SHALL RECEIVE A REMOTE ALARM SIGNAL FROM THE UNIBRED STEAM GENERATOR (USG-1) CONTROL PANEL.

THE DIRECT DIGITAL CONTROL PANEL SHALL MONITOR THE STEAM HEADER PRESSURE AS SENSED BY DIFFERENTIAL PRESSURE SENSOR (PS-1). AN ALARM SHALL BE INITIATED IF STEAM PRESSURE FALLS BELOW 150PSI (AS SHOWN).



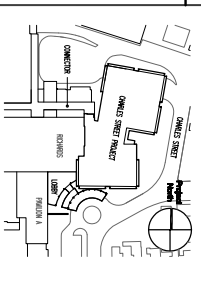
NOT FOR CONSTRUCTION

FOR PERMIT ONLY

DATE: 01/24/04

SCALE: 1/4" = 1'-0"

REVISION LOG



Maine Medical Center
 Charles Street Project
 Portland, Maine
 MAC Project No. 21841

HVAC CLEAN STEAM SCHEMATIC AND SEQUENCE OF OPERATION

Contract No. 4877
 Scale: 1/4" = 1'-0"
 Sheet No. H504
 Date: 01/24/04
 Project: Charles Street Project