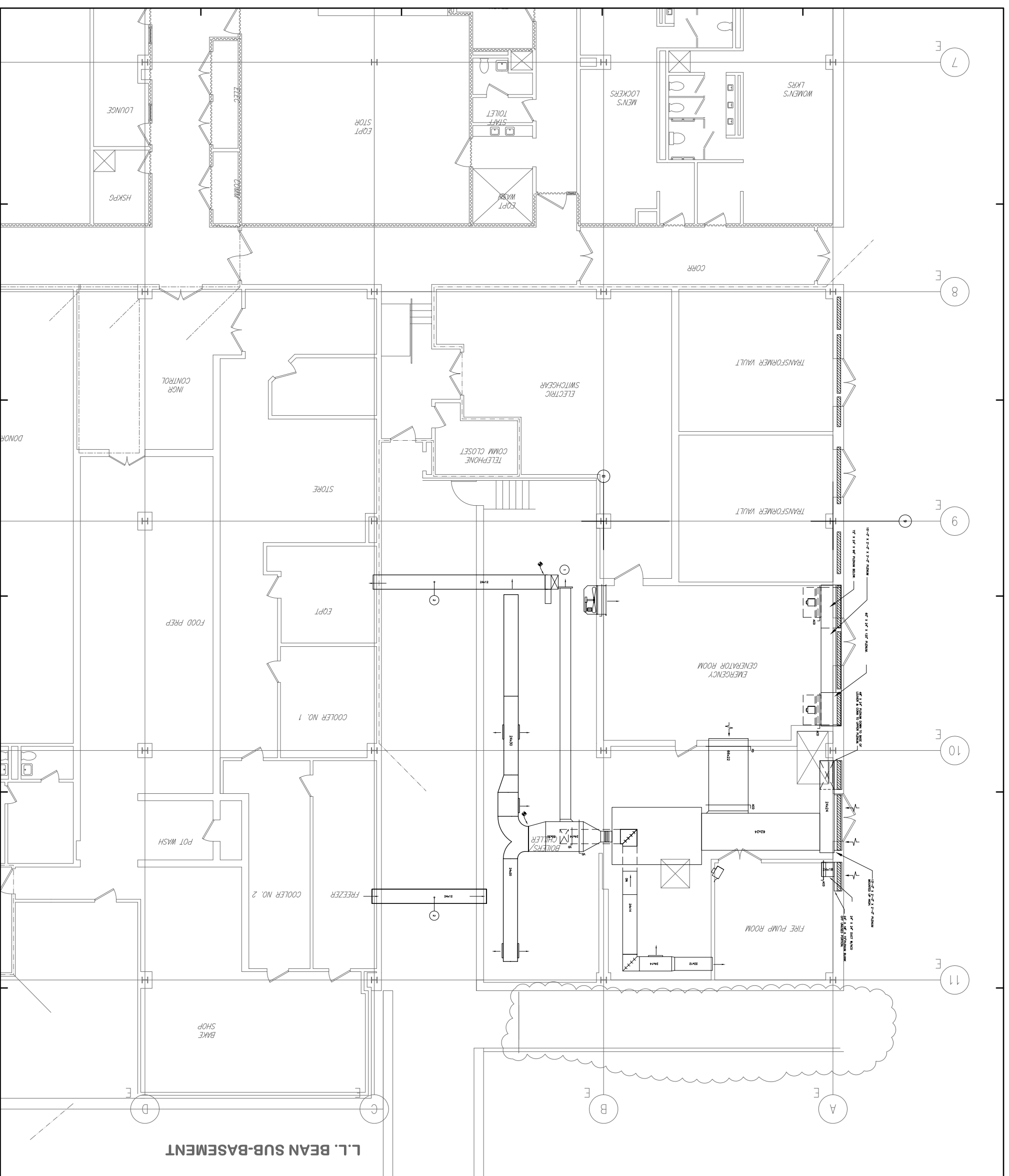
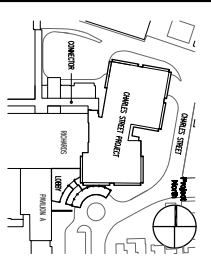


General Notes:

- 1) RELOCATE, REMOVE, REPAIR, PATCH AND REFINISH CONCRETE TO OBTAIN FINISHED SURFACE. PROVIDE SMOOTH, LEVEL, AND UNIFORM SURFACE. PROVIDE SMOOTH, LEVEL, AND UNIFORM SURFACE. PROVIDE SMOOTH, LEVEL, AND UNIFORM SURFACE.
- 2) OBTAINANCE AIR CIRCULATION DUCTS.



L.I. BEAN SUB-BASEMENT



SCALE: AS SHOWN
DATE: 09/21/04
FOR PERMIT ONLY - NOT FOR CONSTRUCTION



Maine Medical Center
Charles Street Project
Portland, Maine
MMC Project No. 21841

HVAC-L.I. BEAN BUILDING
SUB-BASEMENT MECH. RM
PLAN DUCTWORK

Commission No. 4313
Drawing No. H404
Scale: 1/8" = 1'-0"