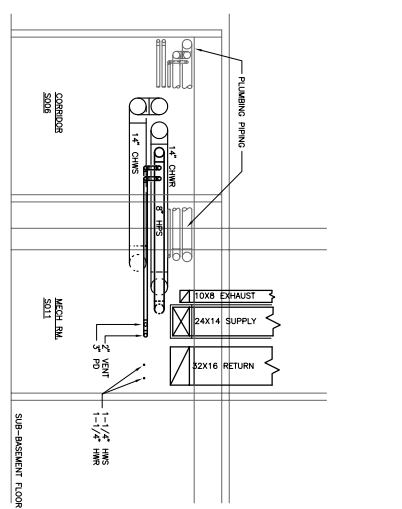
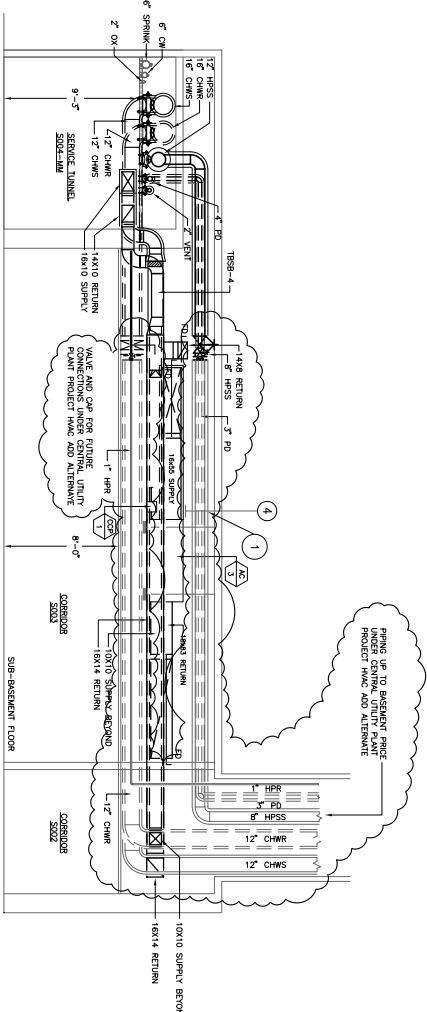


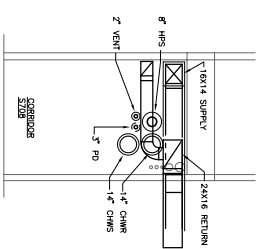
SECTION A-A  
SCALE 1/4"=1'-0"



SECTION B-B  
SCALE 1/4"=1'-0"



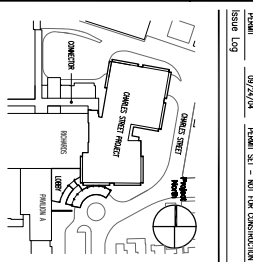
SECTION C-C  
SCALE 1/4"=1'-0"



SECTION D-D  
SCALE 1/4"=1'-0"

- General Notes:
1. PROVIDE STEAM PENETRATIONS ON COLUMN LINE 4"-2" BEAM FOR HPS AND PO PRESS. COORDINATE WITH STRUCTURAL ENGINEER.
  2. SET TYPICAL HPS END OF MAIN DRIP DETAIL.
  3. SEE FLASH TANK DETAIL.
  4. CONNECT IRR FROM FLASH TANK TO CONDENSATE PUMP.
  5. PUMP OPERATES TO FLOOR SINK.
  6. CONNECT FLASH TANK UPS AND VENT CONNECTIONS TO 2" VENT.
  7. SAFETY RELIEF VALVE AND DRIP PAN ELBOW ASSEMBLIES.
  8. CONDENSATE PUMP AND FLASH TANK.
  9. REFER TO STEAM SCHEMATIC FOR STEAM PIPING CONNECTIONS BETWEEN COMPONENTS.
  10. ALL HPS/PA RUN OUTS TO REMOVAL, LEAKY UNLESS OTHERWISE NOTED.

SIZE ONE (10X)  
**FOR PERMIT ONLY**  
**NOT FOR CONSTRUCTION**



**PRO**  
 A REGISTERED PROFESSIONAL ENGINEER  
 PLANNING  
 ARCHITECTURE  
 INTERIORS  
 LANDSCAPE ARCHITECTURE  
 MECHANICAL ENGINEERING  
 ELECTRICAL ENGINEERING  
 CIVIL ENGINEERING  
 ENVIRONMENTAL ENGINEERING  
 1100 State Street  
 Portland, ME 04101  
 Tel: 407-433-1100  
 Fax: 407-433-1101  
 www.pro-engineers.com

**Maine Medical Center**  
 Charles Street Project  
 Portland, Maine  
 HVAC Project No. 21841

**HVAC SUB-BASEMENT PLAN PIPING**

Commission No. 4322  
 Issue No. 1  
 Scale 1/4"=1'-0"  
 Date 08/24/14  
 Project No. 432208208  
 Designer H3SB  
 Checker H3SB  
 Title H3SB