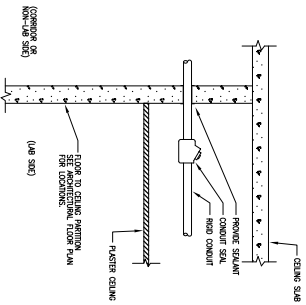
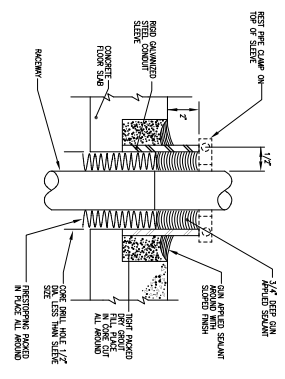


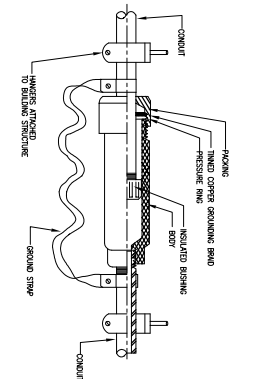
**A1** CORE DETAIL  
SCALE: N.T.S.



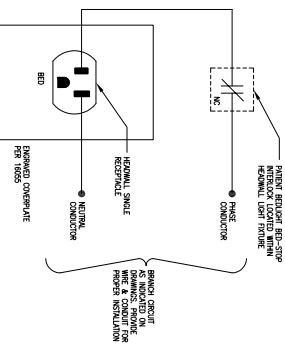
**B1** CONDUIT SEAL DETAIL  
SCALE: N.T.S.



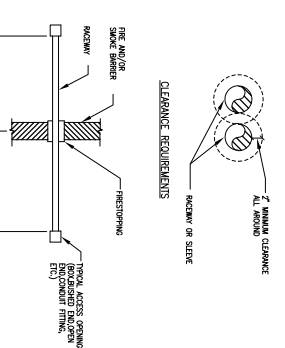
**C1** CONCRETE FLOOR SLAB DETAIL  
SCALE: N.T.S.



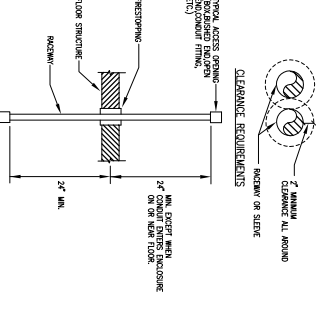
**D1** CONDUIT EXPANSION CUTTING DETAIL  
SCALE: N.T.S.



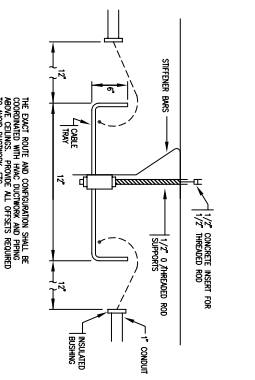
**E1** ELECTRICAL BED STOP INTERLOCK WIRING DETAIL  
SCALE: N.T.S.



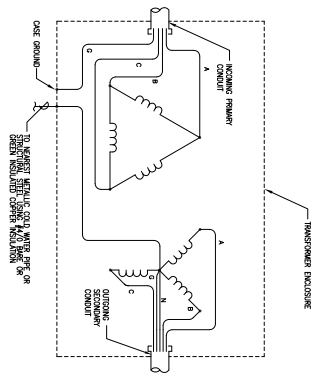
**F1** PENETRATION THROUGH VERTICAL FIRE AND SMOKE BARRIER DETAIL  
SCALE: N.T.S.



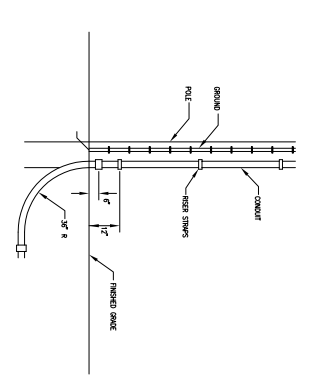
**A2** PENETRATION THROUGH HORIZONTAL FIRE BARRIER DETAIL  
SCALE: N.T.S.



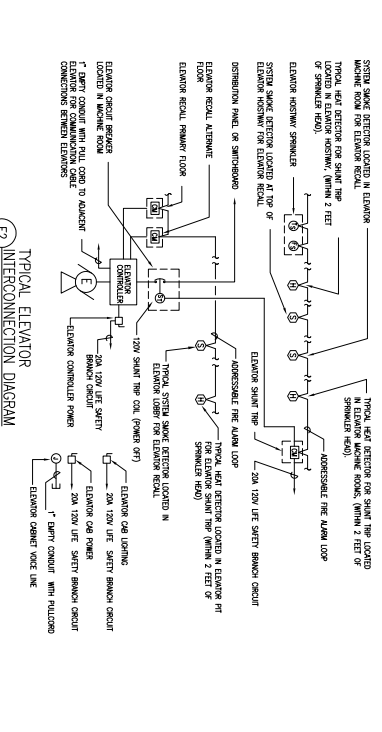
**B2** MOUNTING DETAIL MONO-SYSTEM CABLE TRAY ABOVE CORRIDOR CEILING  
SCALE: N.T.S.



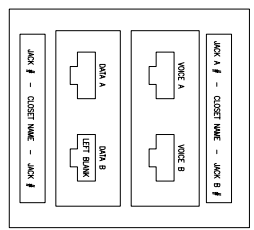
**C2** DRY-TYPE TRANSFORMER GROUND DETAIL  
SCALE: N.T.S.



**D2** POLE RISER DETAIL  
SCALE: N.T.S.



**E2** TYPICAL ELEVATOR INTERCONNECTION DIAGRAM  
SCALE: N.T.S.



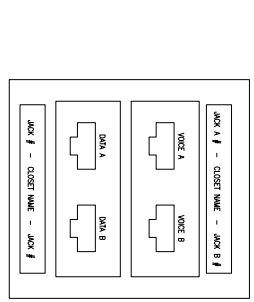
NOTE 1: (1) OUTSIDE 3 CORE SHUT AND (2) BACK VOICE JACKS, THE WIRE/GROUND - WIRE/GROUND Pairs SHALL BE TERMINATED ON JACK "A" AND THE WIRE/GROUND - WIRE/GROUND Pairs SHALL BE TERMINATED ON JACK "B".

NOTE 2: VOICE JACKS ON TOP OF RECEPT.

NOTE 3: (1) OUTSIDE 3 CORE SHUT AND (2) BACK DATA JACKS, THE WIRE/GROUND - WIRE/GROUND Pairs SHALL BE TERMINATED ON JACK "A" AND THE WIRE/GROUND - WIRE/GROUND Pairs SHALL BE TERMINATED ON JACK "B".

NOTE 4: DATA JACKS TERMINATED ON THE LEFT MOST DATA JACK WITH RIGHT-MOST DATA JACK.

**A3** VOICE AND DATA OUTLET DEVICE TERMINATION DETAIL  
SCALE: N.T.S.



NOTE 1: (1) OUTSIDE 3 CORE SHUT AND (2) BACK VOICE JACKS, THE WIRE/GROUND - WIRE/GROUND Pairs SHALL BE TERMINATED ON JACK "A" AND THE WIRE/GROUND - WIRE/GROUND Pairs SHALL BE TERMINATED ON JACK "B".

NOTE 2: VOICE JACKS ON TOP OF RECEPT.

NOTE 3: (1) OUTSIDE 3 CORES PER SPACE.

NOTE 4: TERMINATED IN APPROXIMATE 1/2" DIA. CONDUIT.

NOTE 5: DATA JACKS TERMINATED ON THE LEFT MOST DATA JACK WITH RIGHT-MOST DATA JACK.

**B3** VIDEO CONFERENCING OUTLET DEVICE TERMINATION DETAIL  
SCALE: N.T.S.

DATE: 02/24/04  
**FOR PERMIT ONLY - NOT FOR CONSTRUCTION**  
 PROJECT: CHARLES STREET - 1ST FLOOR CONSTRUCTION  
 SHEET: 02/24/04 - FLOOR SET - 1ST FLOOR CONSTRUCTION  
 REVISION LOG

**TRO**  
 ARCHITECTURE  
 PLANNING  
 ENGINEERING  
 INTERIORS  
 LANDSCAPE ARCHITECTURE  
 THE TROUBLEMAKERS  
 1000 BROADWAY  
 SUITE 1000  
 NEWTON, MA 02459-1100  
 TEL: 617.552.1100  
 FAX: 617.552.1101  
 WWW.TROGROUP.COM

**Maine Medical Center**  
 Charles Street Project  
 Portland, Maine  
 MMC Project No. 21841

**ELECTRICAL DETAILS SHEET 2 OF 2**

Commission No. 4413  
 Scale: N.T.S.  
 Date: 02/24/04  
 Project: 02/24/04 - FLOOR SET - 1ST FLOOR CONSTRUCTION  
 Sheet: 02/24/04 - FLOOR SET - 1ST FLOOR CONSTRUCTION  
 Project: 02/24/04 - FLOOR SET - 1ST FLOOR CONSTRUCTION  
 Sheet: 02/24/04 - FLOOR SET - 1ST FLOOR CONSTRUCTION

**E801**