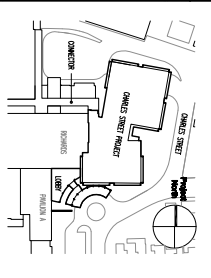


- General Notes:
- 1) REMOVE ALL ELECTRICAL EQUIPMENT ASSOCIATED WITH RECONSTRUCTION.
 - 2) INSTALL ALL ELECTRICAL EQUIPMENT ASSOCIATED WITH RECONSTRUCTION.
 - 3) MAKE ALL ELECTRICAL CONNECTIONS TO BEING RELATED TO WORKMAN EQUIPMENT.

DRAWING NOTES:

SEE DATE FOR PERMIT ONLY
 NOT FOR CONSTRUCTION

DATE: 09/24/24
 DRAWN BY: [Name]
 CHECKED BY: [Name]

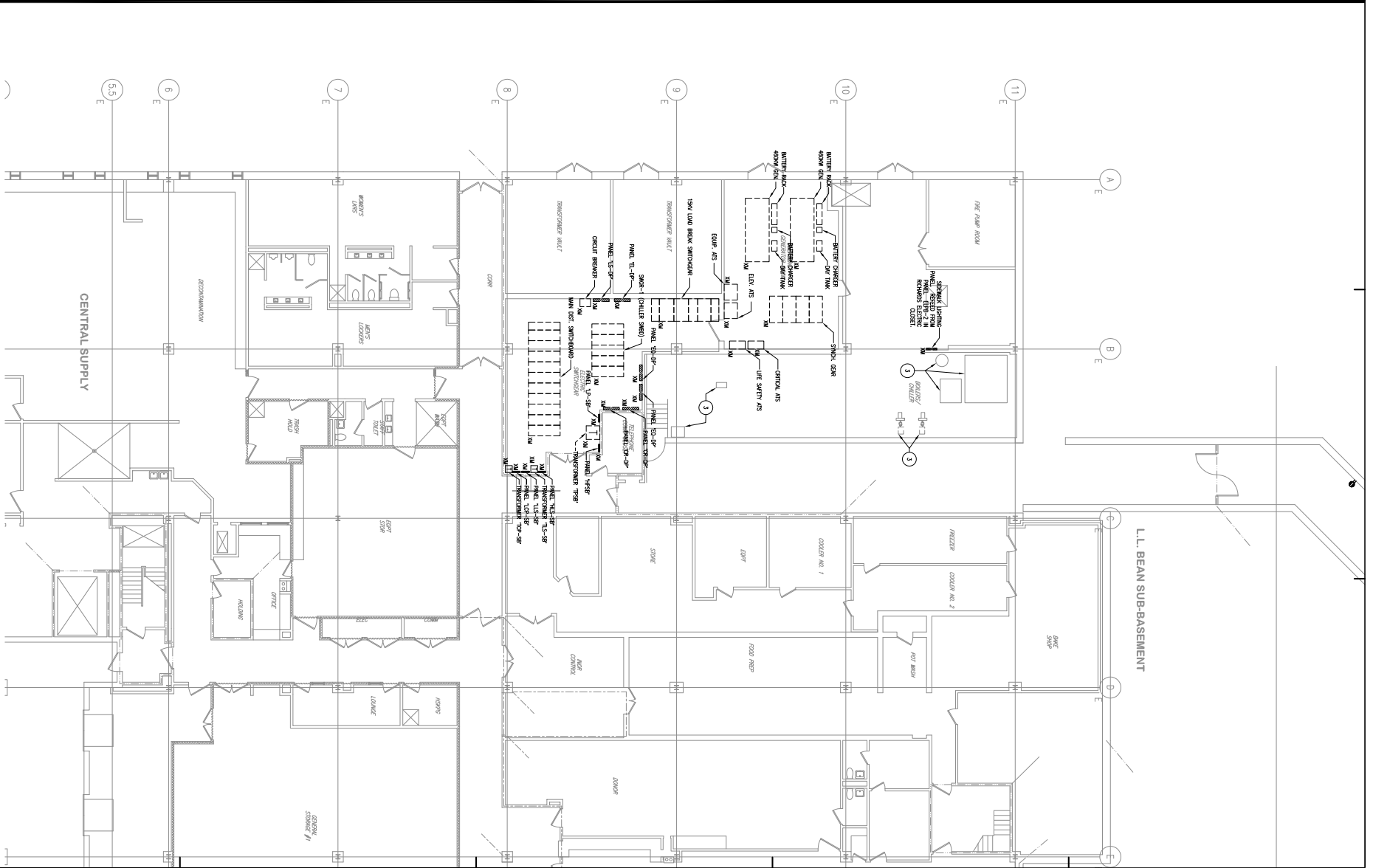


TRO
 ARCHITECTURE
 PLANNING
 ENGINEERING
 INTERIOR DESIGN
 THE TROUBLE COMPANY
 1000 BROADWAY
 PORTLAND, ME 04108
 TEL: 603.771.1100
 WWW.TROARCHITECTURE.COM

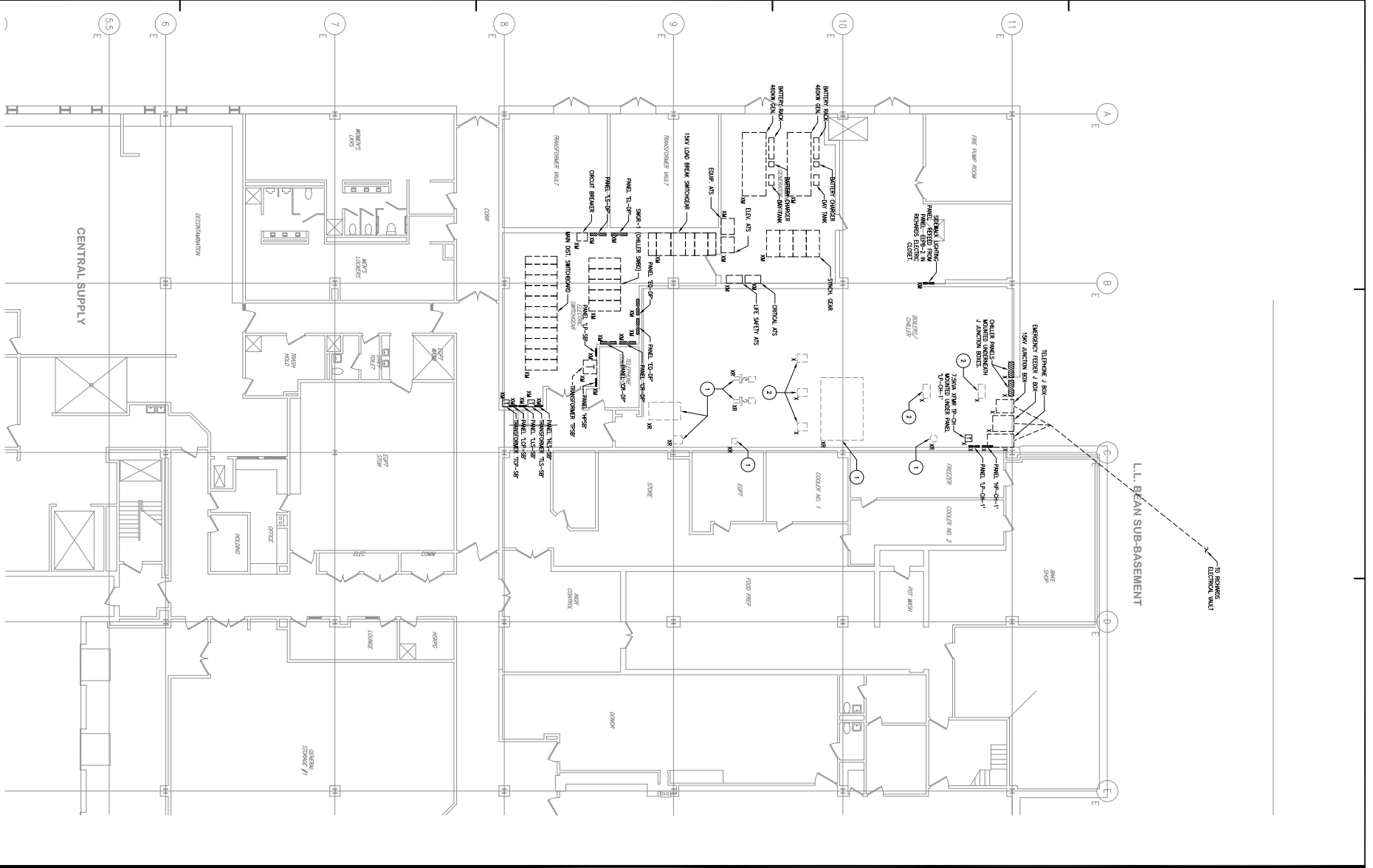
Maine Medical Center
 Charles Street Project
 Portland, Maine
 MMC Project No. 21841

**ELECTRICAL
 BEAN BUILDING BASEMENT
 POWER PART PLANS**

Commission No. 4822
 Scale: 1/8" = 1'-0"
 Drawing No. E500
 Revision No. 1/15/2024



2 BEAN BUILDING EXISTING AND NEW POWER
 SCALE: 1/8" = 1'-0"



1 BEAN BUILDING EXISTING POWER
 SCALE: 1/8" = 1'-0"