

MODULAR CASEWORK - WALL CABINETS

DESCRIPTION	DESIGN NUMBER	W	H	D	DESCRIPTION	DESIGN NUMBER	W	H	D	DESCRIPTION	DESIGN NUMBER	W	H	D	DESCRIPTION	DESIGN NUMBER	W	H	D		
TALL STORAGE 1 NO SHELF	5007 GLASS HINGED DOORS	12	72	13 1/4 OR 18	TALL STORAGE/DOOR 1 ONE SOLID OR FRAMED GLASS DOOR HINGED LEFT 1 FOUR ADJUSTABLE SHELVES IN 72" HEIGHT 1 FIVE ADJUSTABLE SHELVES IN 84" HEIGHT 1 SHALLOW DEPTH.	5032 SOLID HINGED DOORS	12	15	24	14 1/4	WARDROBE OPEN CABINET 1 ONE SHELF. 1 ONE STATIONARY CLOTHES ROD.	5210 NO DOOR	12	72	23 1/4	WARDROBE /DOOR 1 DOOR HINGE LEFT. 1 ONE SHELF. 1 ONE STATIONARY CLOTHES ROD.	5232 SOLID HINGED DOOR	12	15	24	14 1/4
OPEN STORAGE 1 OPEN STORAGE 1 FOUR ADJUSTABLE SHELVES IN 72" HEIGHT. 1 FIVE ADJUSTABLE SHELVES IN 84" HEIGHT. 1 SHALLOW DEPTH.	5010 NO DOOR	12	72	13 1/4 OR 18	TALL STORAGE/DOOR 1 TWO SOLID OR FRAMED GLASS HINGED DOORS 1 FOUR ADJUSTABLE SHELVES IN 72" HEIGHT 1 FIVE ADJUSTABLE SHELVES IN 84" HEIGHT.	5062 SOLID HINGED DOORS	27	72	24	14 1/4	WARDROBE /DOOR 1 DOOR HINGE RIGHT. 1 ONE SHELF. 1 ONE STATIONARY CLOTHES ROD.	5222 SOLID HINGED DOOR	12	72	24	14 1/4					

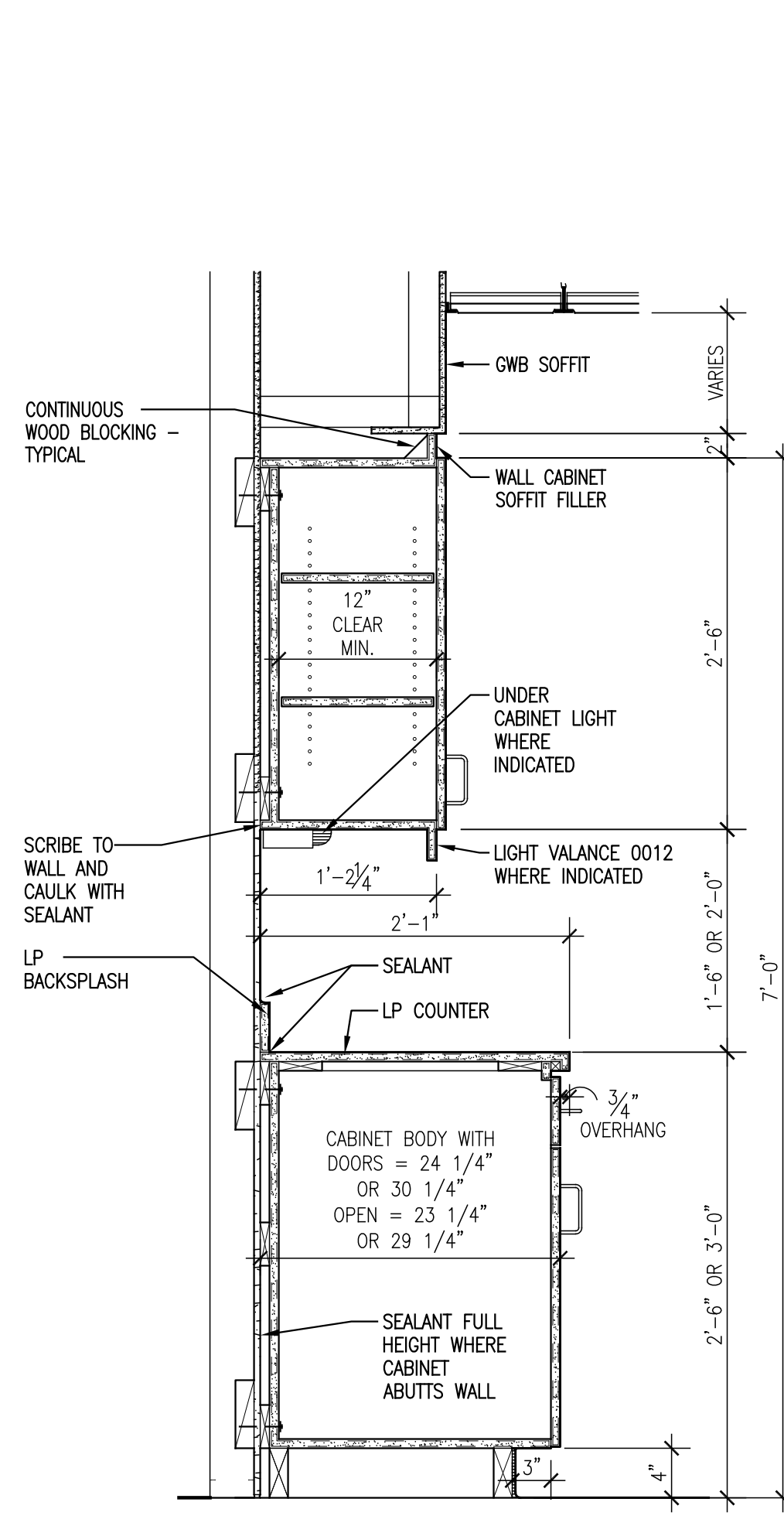
MODULAR CASEWORK - BASE CABINETS

DESCRIPTION	DESIGN NUMBER	W	H	D	DESCRIPTION	DESIGN NUMBER	W	H	D	DESCRIPTION	DESIGN NUMBER	W	H	D	DESCRIPTION	DESIGN NUMBER	W	H	D			
OPEN 1 ONE ADJUSTABLE SHELF	1000 NO DOOR	12	26	24 1/4 OR 30 1/4	DOOR/DRAWER 1 DOOR HINGED RIGHT 1 ONE DRAWER: 3 7/8" INSIDE DEPTH 1 ONE ADJUSTABLE SHELF	1062 SOLID HINGED DOOR	12	30	24 1/4 OR 30 1/4	BLIND CORNER-SLIDING DOOR 1 LEFT SIDE EXPOSED 1 ONE DRAWER: 3 7/8" INSIDE DEPTH 1 ONE ADJUSTABLE SHELF 1 CAN BE PULLED 3" FOR USE IN 48" SPACE	1084 SOLID SLIDING DOOR	45	30	24 1/4 OR 30 1/4	DRAWERS 1 TWO TOP DRAWERS STANDARD HEIGHT: 3 7/8" INSIDE DEPTH 1 TWO EQUAL DRAWERS BELOW 1 6 1/2" INSIDE DEPTH AT 30" HEIGHT 1 9 1/2" INSIDE DEPTH AT 36" HEIGHT	1280	27	30	24 1/4 OR 30 1/4	PEDESTAL SUPPORT 1 SPECIFY COLOR 1 FINISHED TWO SIDES, FRONT EDGE, AND BOTTOM EDGE.		
OPEN 1 ONE DRAWER: 3 7/8" INSIDE DEPTH 1 ONE ADJUSTABLE SHELF	1050 NO DOOR	12	30	24 1/4 OR 30 1/4	DOOR/DRAWER 1 DOOR HINGED LEFT 1 ONE DRAWER: 3 7/8" INSIDE DEPTH 1 ONE ADJUSTABLE SHELF	1072 SOLID HINGED DOOR	12	30	24 1/4 OR 30 1/4	BLIND CORNER-SLIDING DOOR 1 RIGHT SIDE EXPOSED 1 ONE DRAWER: 3 7/8" INSIDE DEPTH 1 ONE ADJUSTABLE SHELF 1 CAN BE PULLED 3" FOR USE IN 48" SPACE	1094 SOLID SLIDING DOOR	45	30	24 1/4 OR 30 1/4	DRAWERS 1 TWO TOP DRAWERS STANDARD HEIGHT: 3 7/8" INSIDE DEPTH 1 THREE EQUAL DRAWERS BELOW 1 1 1/2" INSIDE DEPTH AT 30" HEIGHT 1 3 1/2" INSIDE DEPTH AT 36" HEIGHT	1300	27	30	24 1/4 OR 30 1/4	BASE CORNER FILLER PANEL 1 FRONT IS SAME COLOR AS FACE OF ADJACENT CABINET		
OPEN 1 TWO DRAWERS: 3 7/8" INSIDE DEPTH 1 ONE ADJUSTABLE SHELF	1100 NO DOOR	27	30	24 1/4 OR 30 1/4	DOOR/DRAWER 1 TWO HINGED DOORS 1 ONE DRAWER: 3 7/8" INSIDE DEPTH 1 ONE ADJUSTABLE SHELF	1052 SOLID HINGED DOOR	27	30	24 1/4 OR 30 1/4	SINK CABINET 1 SLIDING DOORS 1 BLANK PANEL 1 NO SHELF	1164 SOLID SLIDING DOOR	30	30	24 1/4 OR 30 1/4	DRAWERS 1 SIX EQUAL HEIGHT DRAWERS 1 2 1/4" INSIDE DEPTH AT 30" HEIGHT 1 1 1/4" INSIDE DEPTH AT 36" HEIGHT	1310	27	30	24 1/4 OR 30 1/4	BASE FILLER PANEL 1 FRONT IS SAME COLOR AS FACE OF ADJACENT CABINET 1 UNDER 3" W FACE IS BLACK OR PUTTY		
BLIND CORNER OPEN 1 LEFT SIDE EXPOSED 1 ONE ADJUSTABLE SHELF 1 CAN BE PULLED 3" FOR USE IN 48" SPACE	1030 NO DOOR	45	26	24 1/4 OR 30 1/4	DOOR/DRAWER 1 TWO HINGED DOORS 1 TWO DRAWERS: 3 7/8" INSIDE DEPTH 1 ONE ADJUSTABLE SHELF	1102 SOLID HINGED DOOR	27	30	24 1/4 OR 30 1/4	OPEN/DRAWER 1 PULL-OUT BOARD 16" WIDE 1 ONE DRAWER: 2 7/8" INSIDE DEPTH 1 ONE ADJUSTABLE SHELF 1 CAN BE PULLED 3" FOR USE IN 48" SPACE	1180 NO DOOR	18	30	24 1/4 OR 30 1/4	DRAWERS 1 SEVEN EQUAL DRAWERS 1 2 1/2" INSIDE DEPTH AT 36" HEIGHT	1320	27	30	24 1/4 OR 30 1/4	KNEE SPACE PANEL 1 USE FOR CLOSING OFF SPACE BETWEEN CABINETS		
BLIND CORNER OPEN 1 RIGHT SIDE EXPOSED 1 ONE ADJUSTABLE SHELF 1 CAN BE PULLED 3" FOR USE IN 48" SPACE	1040 NO DOOR	45	26	24 1/4 OR 30 1/4	BLIND CORNER-DOOR/DRAWER 1 LEFT SIDE EXPOSED 1 ONE DRAWER: 3 7/8" INSIDE DEPTH 1 ONE ADJUSTABLE SHELF 1 CAN BE PULLED 3" FOR USE IN 48" SPACE	1082 SOLID HINGED DOOR	45	30	24 1/4 OR 30 1/4	DOOR/DRAWER 1 PINE DOOR HINGED RIGHT 1 PULL-OUT BOARD 16" WIDE 1 ONE DRAWER: 2 7/8" INSIDE DEPTH 1 ONE ADJUSTABLE SHELF	1192 SOLID HINGED DOOR	18	30	24 1/4 OR 30 1/4	FILE DRAWERS 1 TWO EQUAL TOP DRAWERS 1 3 3/4" INSIDE DEPTH AT 30" HEIGHT 1 6 3/4" INSIDE DEPTH AT 36" HEIGHT 1 ONE FILE DRAWER BELOW WITH FOLLOWER: 9 3/4" INSIDE DEPTH 1 LETTER SIZE - 18" WIDE 1 LEGAL SIZE - 21" WIDE	1330	18	21	30	24 1/4 OR 30 1/4	TABLE FRAME 1 OPEN STORAGE	
BLIND CORNER OPEN 1 LEFT SIDE EXPOSED 1 ONE DRAWER: 3 7/8" INSIDE DEPTH 1 ONE ADJUSTABLE SHELF 1 CAN BE PULLED 3" FOR USE IN 48" SPACE	1080 NO DOOR	45	30	24 1/4 OR 30 1/4	BLIND CORNER-DOOR/DRAWER 1 RIGHT SIDE EXPOSED 1 ONE DRAWER: 3 7/8" INSIDE DEPTH 1 ONE ADJUSTABLE SHELF 1 CAN BE PULLED 3" FOR USE IN 48" SPACE	1092 SOLID HINGED DOOR	45	30	24 1/4 OR 30 1/4	DOOR/DRAWER 1 PINE DOOR HINGED LEFT 1 PULL-OUT BOARD 16" WIDE 1 ONE DRAWER: 2 7/8" INSIDE DEPTH 1 ONE ADJUSTABLE SHELF	1202 SOLID HINGED DOOR	18	30	24 1/4 OR 30 1/4	FILE DRAWERS 1 THREE EQUAL TOP DRAWERS: 3 5/8" INSIDE DEPTH 1 ONE FILE DRAWER BELOW WITH FOLLOWER: 9 3/4" INSIDE DEPTH 1 LETTER SIZE - 18" WIDE 1 LEGAL SIZE - 21" WIDE	1340	18	21	30	24 1/4 OR 30 1/4	TABLE FRAME 1 OPEN STORAGE 1 TWO COMPARTMENTS	
BLIND CORNER OPEN 1 RIGHT SIDE EXPOSED 1 ONE DRAWER: 3 7/8" INSIDE DEPTH 1 ONE ADJUSTABLE SHELF 1 CAN BE PULLED 3" FOR USE IN 48" SPACE	1090 NO DOOR	45	30	24 1/4 OR 30 1/4	SINK CABINET 1 ONE DOOR HINGED RIGHT 1 BLANK PANEL 1 NO SHELF	1142 SOLID HINGED DOOR	18	21	24 1/4 OR 30 1/4	DRAWER CABINET 1 PULL-OUT BOARD 16" WIDE 1 BLANK PANEL 1 NO SHELF 1 2 1/4" INSIDE DEPTH AT 30" HEIGHT 1 3 1/4" INSIDE DEPTH AT 36" HEIGHT	1210	18	30	24 1/4 OR 30 1/4	FILE DRAWERS 1 TWO FILE DRAWERS WITH FOLLOWERS: 9 3/4" INSIDE DEPTH 1 LETTER SIZE - 18" WIDE 1 LEGAL SIZE - 21" WIDE	1350	18	21	30	24 1/4 OR 30 1/4	BLANK APRON 1 FRONT IS SAME COLOR AS FACE OF ADJACENT CABINET	
DOOR ONLY 1 ONE DOOR HINGED RIGHT 1 ONE DOOR HINGED LEFT 1 ONE ADJUSTABLE SHELF	1012 SOLID HINGED DOOR	12	26	24 1/4 OR 30 1/4	SINK CABINET 1 TWO HINGED LEFT 1 ONE DOOR HINGED LEFT 1 ONE ADJUSTABLE SHELF	1152 SOLID HINGED DOOR	18	30	24 1/4 OR 30 1/4	DRAWERS 1 TOP DRAWER STANDARD HEIGHT: 3 7/8" INSIDE DEPTH 1 FOUR EQUAL DRAWERS 1 1 3/4" INSIDE DEPTH AT 30" HEIGHT 1 3 5/16" INSIDE DEPTH AT 36" HEIGHT	1265	12	33	30	24 1/4 OR 30 1/4	FILE DRAWERS 1 ONE TOP DRAWER: 3 1/2" INSIDE DEPTH 1 TWO FILE DRAWERS BELOW WITH FOLLOWERS: 9 3/4" INSIDE DEPTH 1 LETTER SIZE - 18" WIDE 1 LEGAL SIZE - 21" WIDE	1360	18	21	30	24 1/4 OR 30 1/4	DRAWER TABLE FRAME 1 ONE DRAWER
DOOR ONLY 1 ONE DOOR HINGED LEFT 1 ONE ADJUSTABLE SHELF	1022 SOLID HINGED DOOR	12	26	24 1/4 OR 30 1/4	SINK CABINET 1 TWO HINGED DOORS 1 BLANK PANEL 1 NO SHELF	1162 SOLID HINGED DOOR	27	30	24 1/4 OR 30 1/4	DRAWERS 1 THREE EQUAL DRAWERS 1 DRAWERS 33" WIDE AND OVER HAVE TWO PULLS 1 4 1/8" INSIDE DEPTH AT 26" HEIGHT 1 5 1/2" INSIDE DEPTH AT 30" HEIGHT 1 2 1/2" INSIDE DEPTH AT 36" HEIGHT	1220	12	33	30	24 1/4 OR 30 1/4	FILE DRAWERS 1 ONE TOP DRAWER: 3 1/2" INSIDE DEPTH 1 TWO FILE DRAWERS BELOW WITH FOLLOWERS: 9 3/4" INSIDE DEPTH 1 LETTER SIZE - 18" WIDE 1 LEGAL SIZE - 21" WIDE	1360	18	21	30	24 1/4 OR 30 1/4	DRAWER TABLE FRAME 1 TWO EQUAL DRAWERS
DOOR ONLY 1 TWO HINGED DOORS 1 ONE ADJUSTABLE SHELF	1002 SOLID HINGED DOOR	27	26	24 1/4 OR 30 1/4	DOOR ONLY 1 TWO HINGED DOORS 1 ONE ADJUSTABLE SHELF	1004 SOLID SLIDING DOOR	30	26	24 1/4 OR 30 1/4	DRAWERS 1 TOP DRAWER STANDARD HEIGHT: 3 7/8" INSIDE DEPTH 1 TWO EQUAL DRAWERS 1 6 1/2" INSIDE DEPTH AT 30" HEIGHT 1 9 1/2" INSIDE DEPTH AT 36" HEIGHT	1230	12	33	30	24 1/4 OR 30 1/4	FILE DRAWERS 1 ONE TOP DRAWER: 3 1/2" INSIDE DEPTH 1 TWO FILE DRAWERS BELOW WITH FOLLOWERS: 9 3/4" INSIDE DEPTH 1 LETTER SIZE - 18" WIDE 1 LEGAL SIZE - 21" WIDE	1360	18	21	30	24 1/4 OR 30 1/4	DRAWER TABLE FRAME 1 TWO EQUAL DRAWERS
BLIND CORNER-HINGED DOOR 1 LEFT SIDE EXPOSED 1 ONE ADJUSTABLE SHELF 1 CAN BE PULLED 3" FOR USE IN 48" SPACE	1032 SOLID HINGED DOOR	45	26	24 1/4 OR 30 1/4	BLIND CORNER-SLIDING DOOR 1 LEFT SIDE EXPOSED 1 ONE ADJUSTABLE SHELF 1 CAN BE PULLED 3" FOR USE IN 48" SPACE	1034 SOLID HINGED DOOR	45	26	24 1/4 OR 30 1/4	DRAWERS 1 FOUR EQUAL DRAWERS 1 2 1/2" INSIDE DEPTH AT 26" HEIGHT 1 3 1/2" INSIDE DEPTH AT 30" HEIGHT 1 5" INSIDE DEPTH AT 36" HEIGHT	1240	12	33	30	24 1/4 OR 30 1/4	FILE DRAWERS 1 ONE TOP DRAWER: 3 1/2" INSIDE DEPTH 1 TWO FILE DRAWERS BELOW WITH FOLLOWERS: 9 3/4" INSIDE DEPTH 1 LETTER SIZE - 18" WIDE 1 LEGAL SIZE - 21" WIDE	1360	18	21	30	24 1/4 OR 30 1/4	DRAWER TABLE FRAME 1 TWO EQUAL DRAWERS
BLIND CORNER-HINGED DOOR 1 RIGHT SIDE EXPOSED 1 ONE ADJUSTABLE SHELF 1 CAN BE PULLED 3" FOR USE IN 48" SPACE	1042 SOLID HINGED DOOR	45	26	24 1/4 OR 30 1/4	BLIND CORNER-SLIDING DOOR 1 RIGHT SIDE EXPOSED 1 ONE ADJUSTABLE SHELF 1 CAN BE PULLED 3" FOR USE IN 48" SPACE	1044 SOLID SLIDING DOOR	45	26	24 1/4 OR 30 1/4	DRAWERS 1 TOP DRAWER STANDARD HEIGHT: 3 7/8" INSIDE DEPTH 1 THREE EQUAL DRAWERS 1 3 3/8" INSIDE DEPTH AT 30" HEIGHT 1 5 3/8" INSIDE DEPTH AT 36" HEIGHT	1250	12	33	30	24 1/4 OR 30 1/4	FILE DRAWERS 1 ONE TOP DRAWER: 3 1/2" INSIDE DEPTH 1 TWO FILE DRAWERS BELOW WITH FOLLOWERS: 9 3/4" INSIDE DEPTH 1 LETTER SIZE - 18" WIDE 1 LEGAL SIZE - 21" WIDE	1360	18	21	30	24 1/4 OR 30 1/4	DRAWER TABLE FRAME 1 TWO EQUAL DRAWERS
SINK CABINET 1 ONE DOOR HINGED RIGHT 1 NO SHELF	1112 SOLID HINGED DOOR	18	26	24 1/4 OR 30 1/4	SINK CABINET 1 SLIDING DOORS ONLY 1 NO SHELF	1134 SOLID SLIDING DOOR	30	26	24 1/4 OR 30 1/4	DRAWERS 1 FIVE EQUAL DRAWERS 1 2 1/4" INSIDE DEPTH AT 30" HEIGHT 1 3 1/4" INSIDE DEPTH AT 36" HEIGHT	1260	12	33	30	24 1/4 OR 30 1/4	FILE DRAWERS 1 ONE TOP DRAWER: 3 1/2" INSIDE DEPTH 1 TWO FILE DRAWERS BELOW WITH FOLLOWERS: 9 3/4" INSIDE DEPTH 1 LETTER SIZE - 18" WIDE 1 LEGAL SIZE - 21" WIDE	1360	18	21	30	24 1/4 OR 30 1/4	DRAWER TABLE FRAME 1 TWO EQUAL DRAWERS
SINK CABINET 1 ONE DOOR HINGED LEFT 1 NO SHELF	1122 SOLID HINGED DOOR	18	26	24 1/4 OR 30 1/4	DOOR/DRAWER 1 ONE DOOR HINGED LEFT 1 ONE DRAWER: 3 7/8" INSIDE DEPTH 1 ONE ADJUSTABLE SHELF	1054 SOLID SLIDING DOOR	30	30	24 1/4 OR 30 1/4	DRAWERS 1 SIX EQUAL DRAWERS 1 2 1/2" INSIDE DEPTH AT 36" HEIGHT	1270	12	33	30	24 1/4 OR 30 1/4	FILE DRAWERS 1 ONE TOP DRAWER: 3 1/2" INSIDE DEPTH 1 TWO FILE DRAWERS BELOW WITH FOLLOWERS: 9 3/4" INSIDE DEPTH 1 LETTER SIZE - 18" WIDE 1 LEGAL SIZE - 21" WIDE	1360	18	21	30	24 1/4 OR 30 1/4	DRAWER TABLE FRAME 1 TWO EQUAL DRAWERS
SINK CABINET 1 TWO HINGED DOORS 1 NO SHELF	1132 SOLID HINGED DOOR	27	26	24 1/4 OR 30 1/4	DOOR/DRAWER 1 SLIDING DOORS 1 TWO DRAWERS: 3 7/8" INSIDE DEPTH 1 ONE ADJUSTABLE SHELF	1104 SOLID SLIDING DOOR	30	30	24 1/4 OR 30 1/4	DRAWERS 1 SEVEN EQUAL DRAWERS 1 3 3/4" INSIDE DEPTH AT 36" HEIGHT	1280	12	33	30	24 1/4 OR 30 1/4	FILE DRAWERS 1 ONE TOP DRAWER: 3 1/2" INSIDE DEPTH 1 TWO FILE DRAWERS BELOW WITH FOLLOWERS: 9 3/4" INSIDE DEPTH 1 LETTER SIZE - 18" WIDE 1 LEGAL SIZE - 21" WIDE	1360	18	21	30	24 1/4 OR 30 1/4	DRAWER TABLE FRAME 1 TWO EQUAL DRAWERS

NOTES

TYPICAL BASE AND WALL CABINETS

- ALL BASE AND WALL CABINET DESIGNS BASED ON LSI CORPORATION OF AMERICA, INC. COMPONENTS
- CABINET IDENTIFICATION
- PROVIDE SAME FINISH BASE MATERIAL AS PER FINISH MATERIAL SCHEDULE. EXTEND BASE TO WALL AT ALL CABINET RETURNS AND END PANELS.
- VERIFY ACTUAL ROOM DIMENSIONS BEFORE FABRICATION.

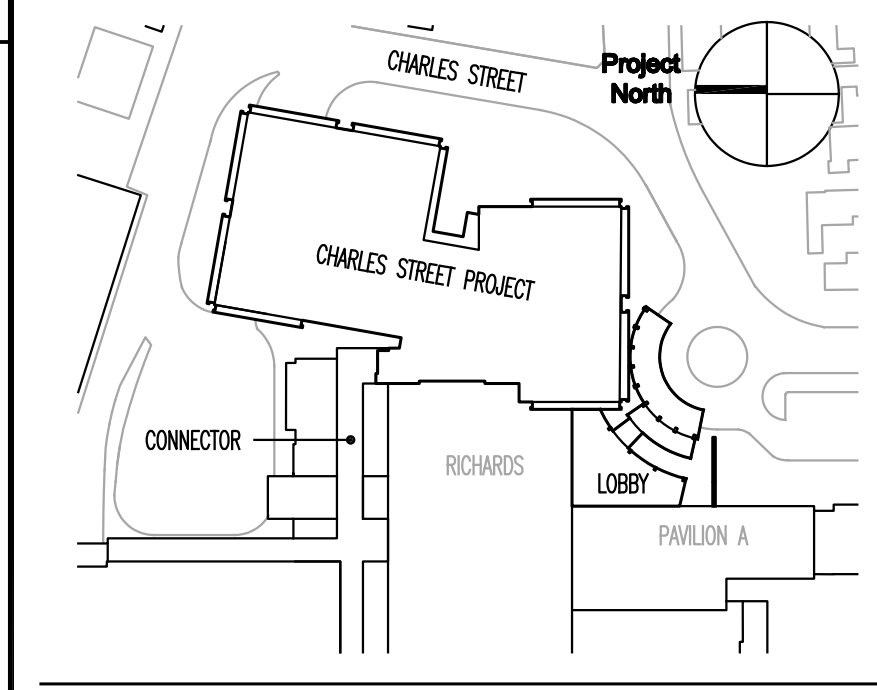


General Notes:

FOR PERMIT ONLY
NOT FOR CONSTRUCTION

09/24/04 PERMIT SET - NOT FOR CONSTRUCTION

Issue Log



TRO
ARCHITECTURE
PLANNING
ENGINEERING
INTERIOR DESIGN

The Ritchie Organization
80 Bridge Street
Newton, MA 02459-1194
617-552-9100

Maine Medical Center
Charles Street Project
Portland, Maine MMC Project No. 21841

MODULAR CASEWORK
DETAILS NO. 1

Commission No.	4673	Date Issued	
Scale	AS NOTED	Sheet Number	
Drawn By	JW		
Approved By	JW		
Filename	4673A800.dwg		
Copyright	© 2004 The Ritchie Organization		

A800