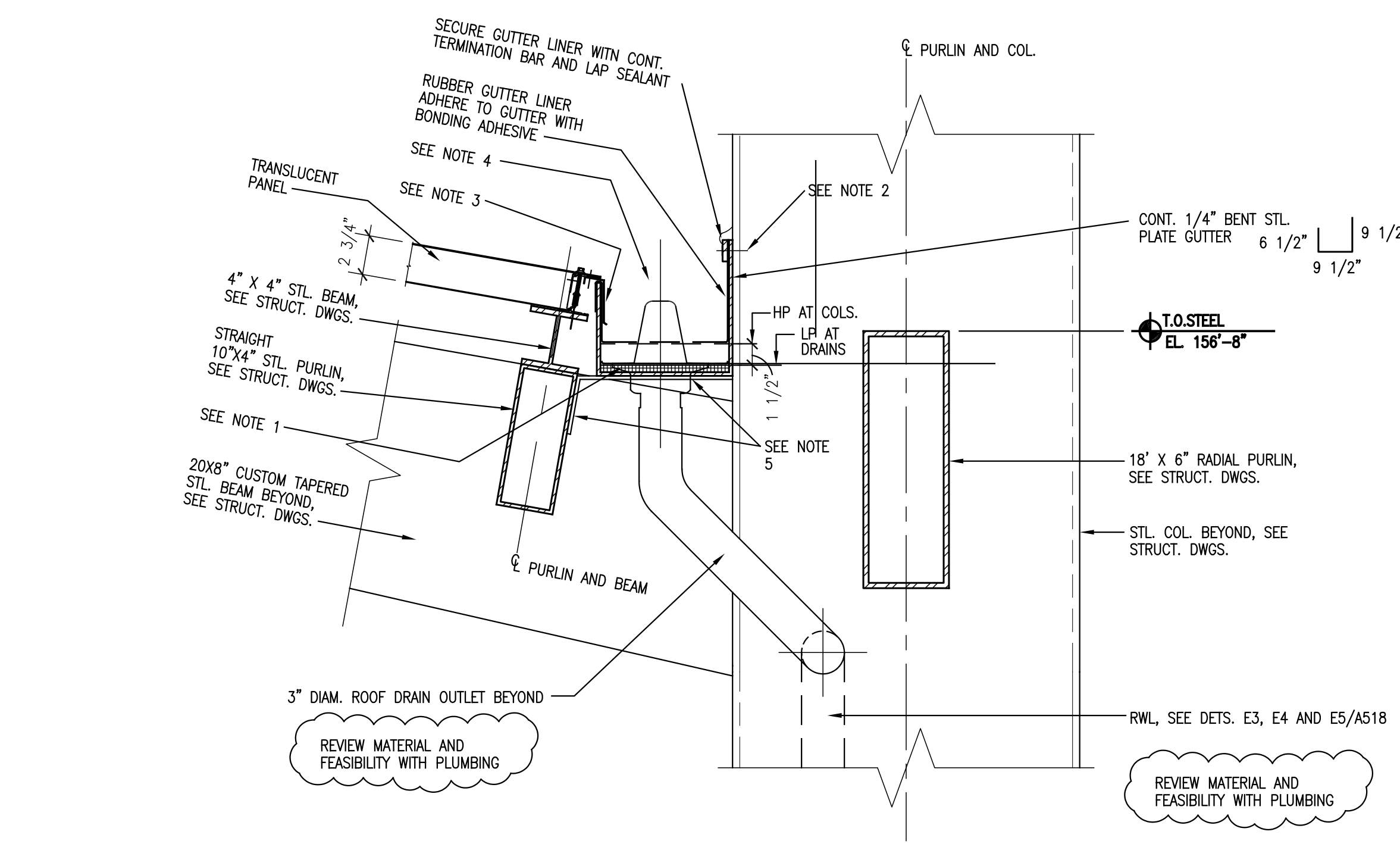
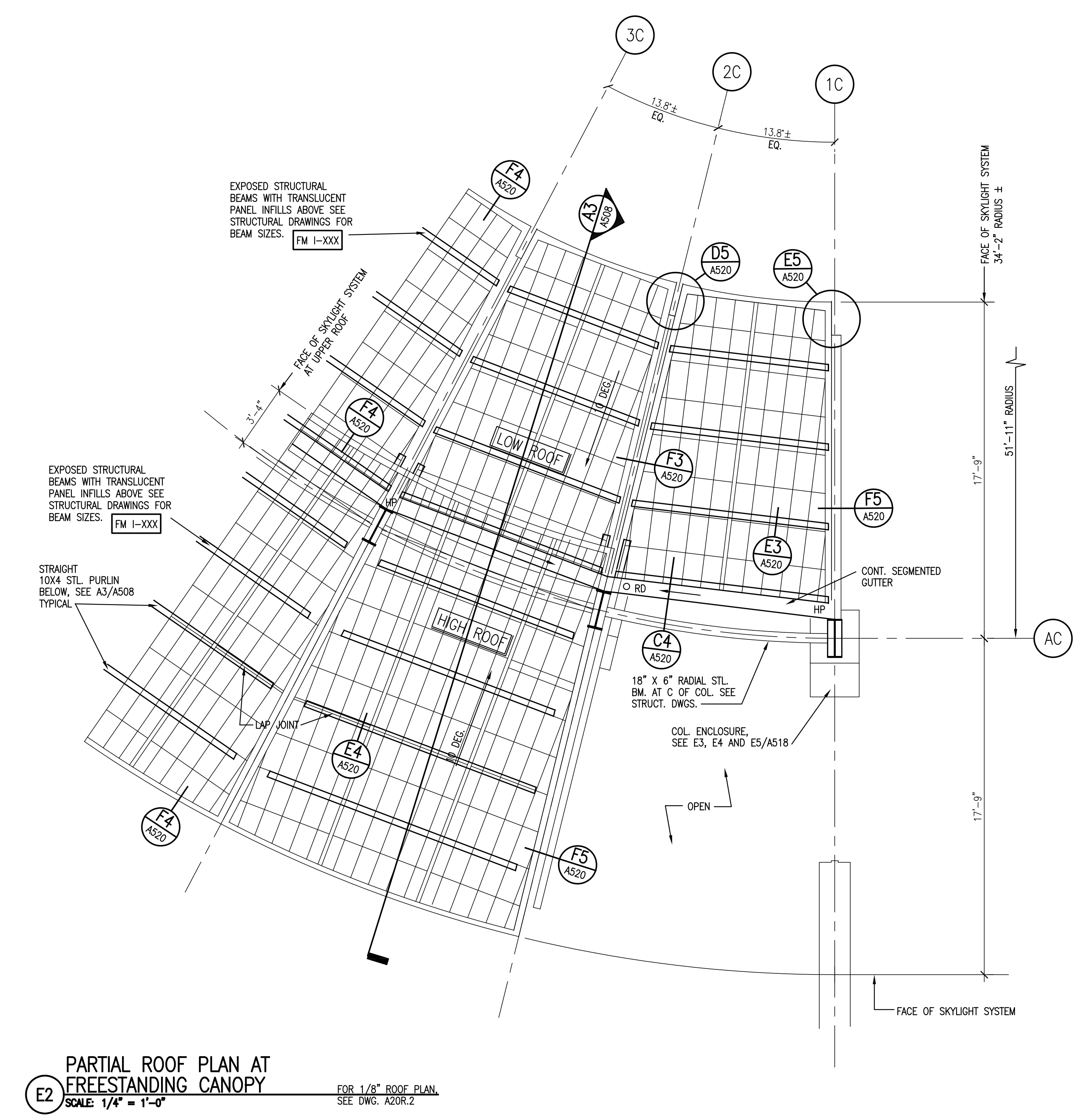
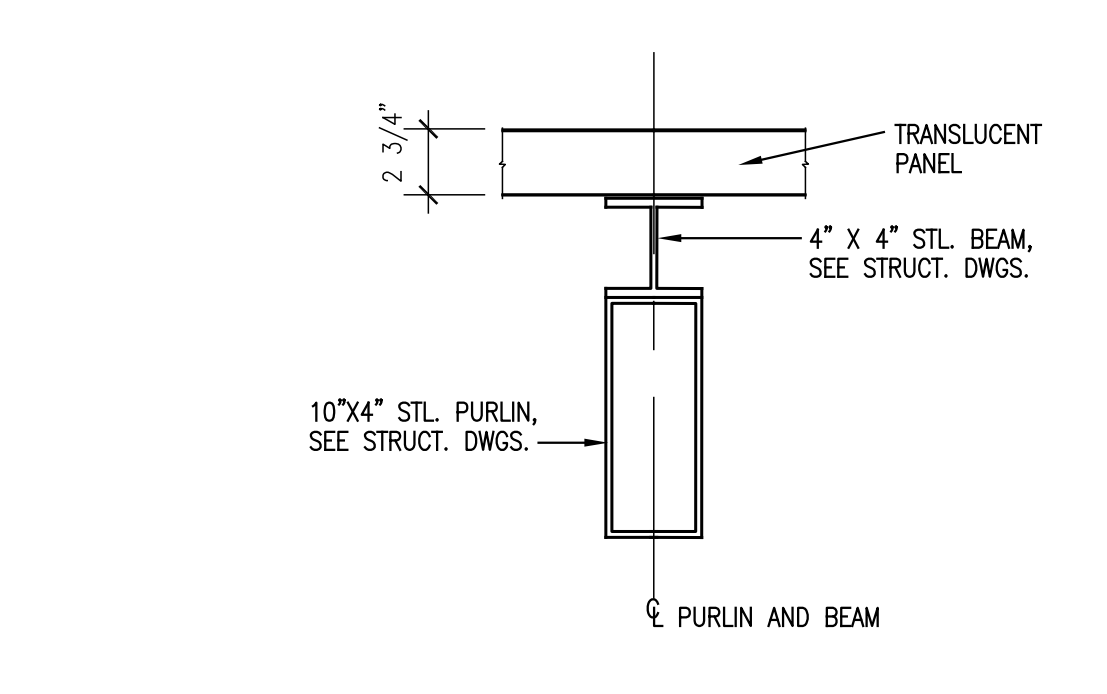


General Notes:

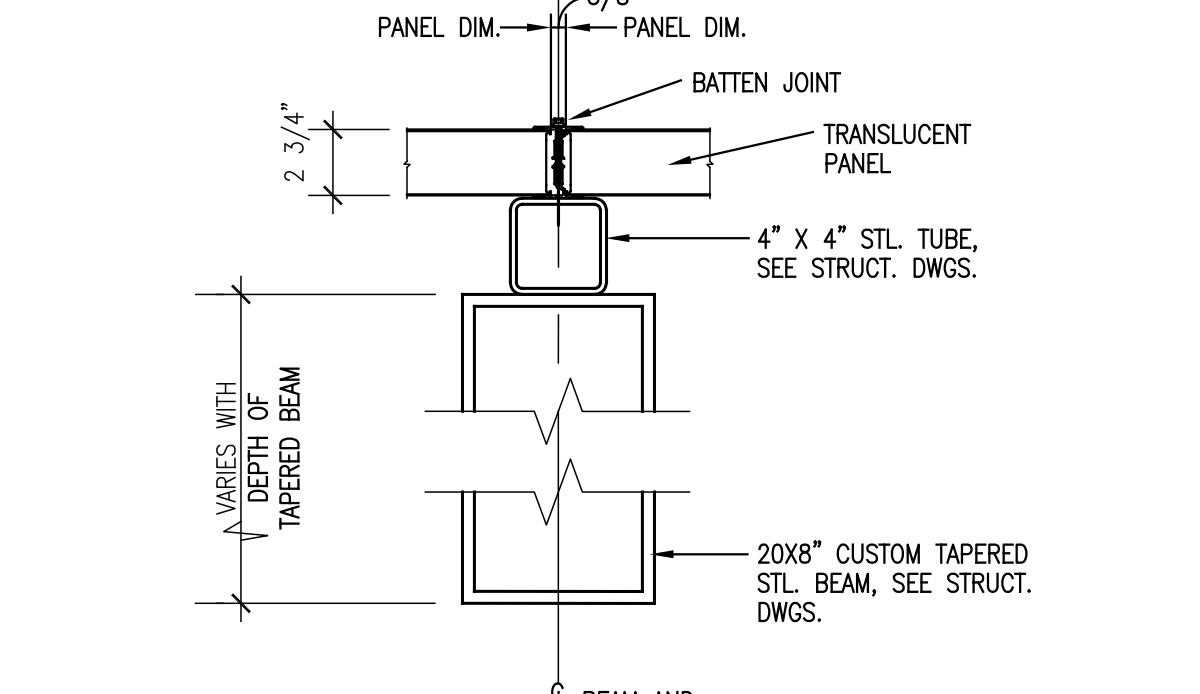


- NOTES:
- 1) TAPERED RIGID INSULATION - MIN. 1/2" THK AT GUTTER DRAIN LOW PTS. AND 2" AT GUTTER HIGH PTS.
 - 2) SECURE CONT. TERMINATION BAR WITH SELF-TAPPING SCREWS
 - 3) CONT. FLASHING BY PANEL MFR. - LAP GUTTER 3" MIN.
 - 4) ROOF DRAIN AT LOW PTS. - SEE ROOF PLAN FOR LOCATIONS
 - 5) BENT STL. PLATE GUTTER BRACKETS EQ. SPACED BETWEEN COLS. AT 4' OC MAX.

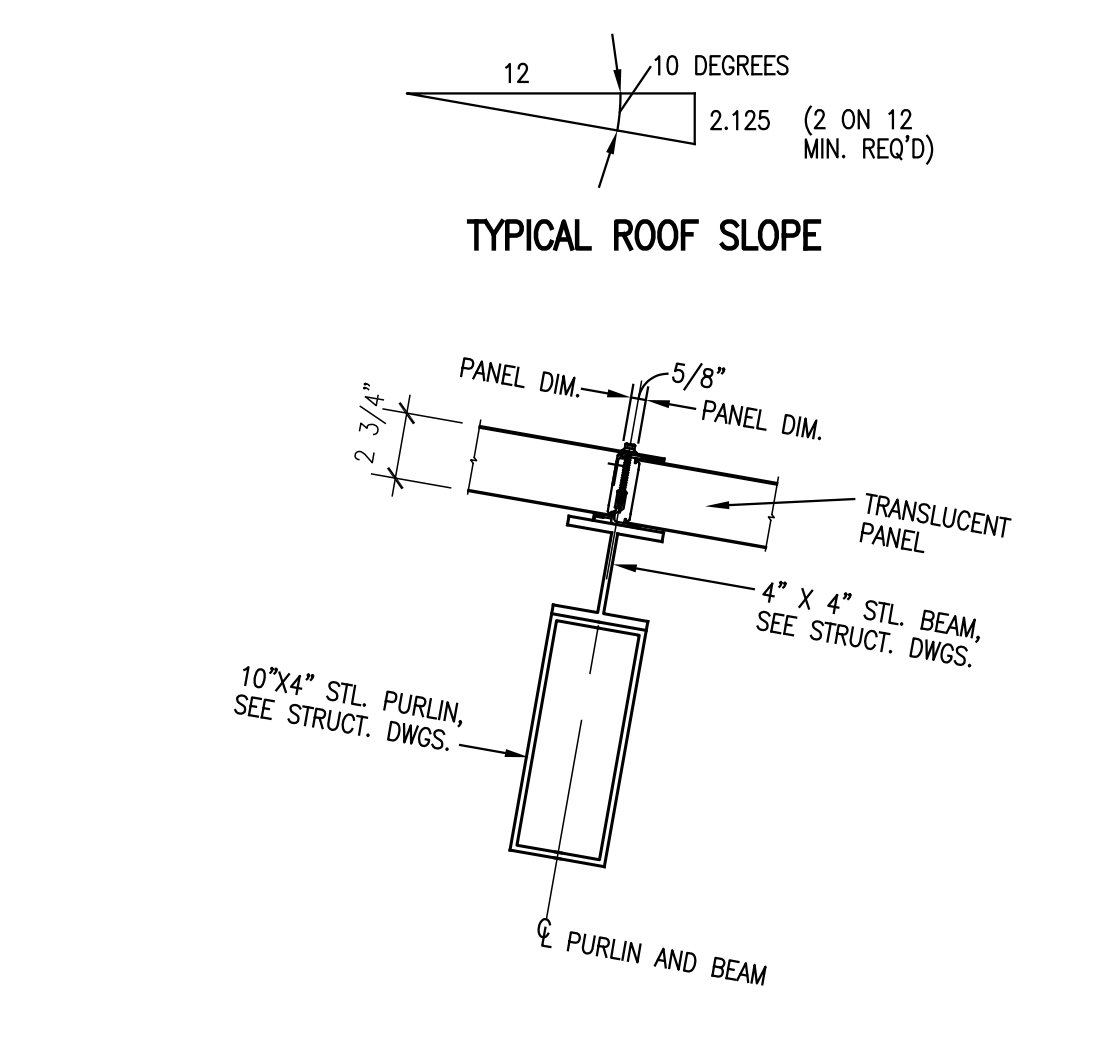
C4 DETAIL AT GUTTER
SCALE: 1/2" = 1'-0"



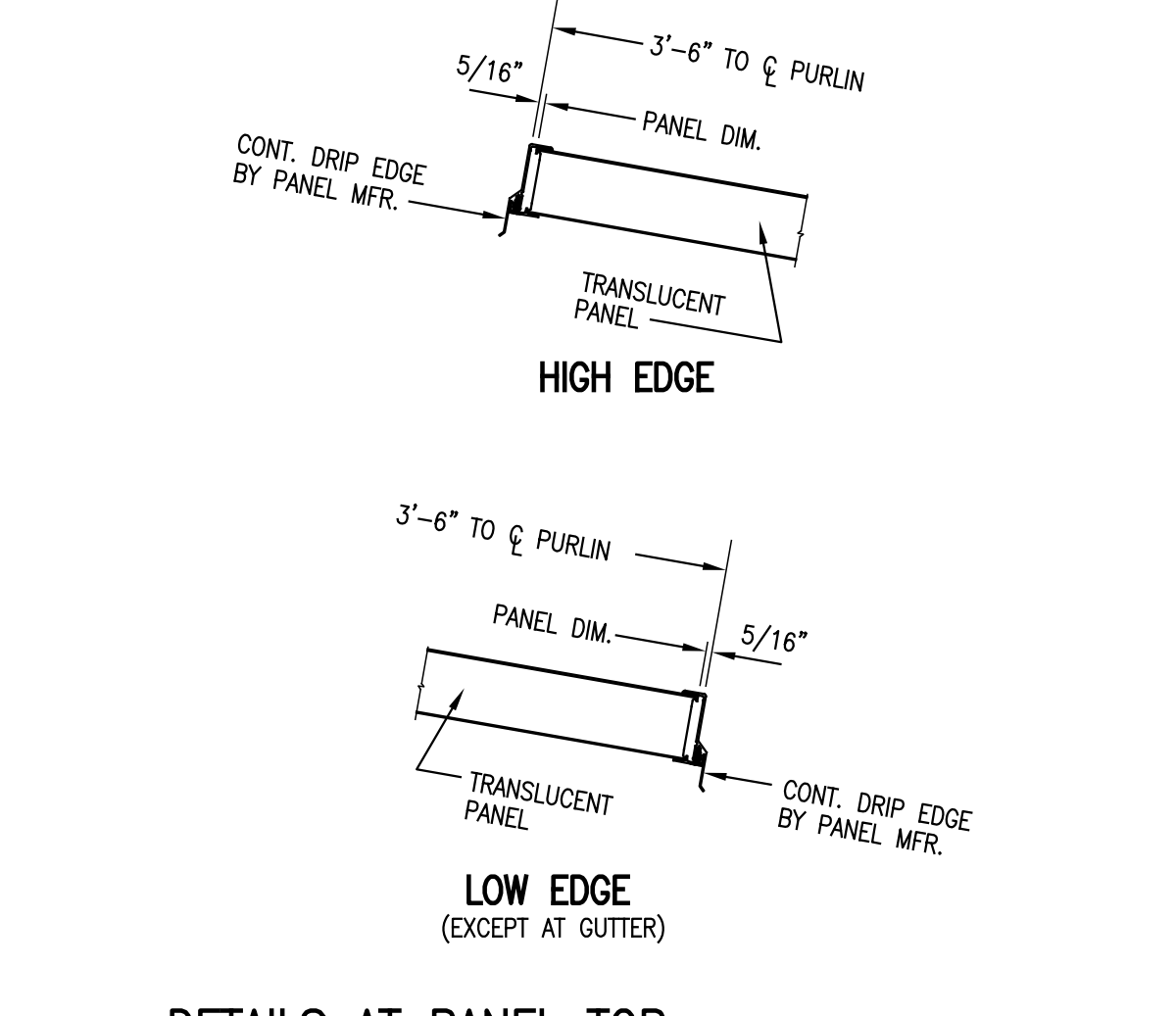
E3 DETAIL AT PURLIN
SCALE: 1/2" = 1'-0"



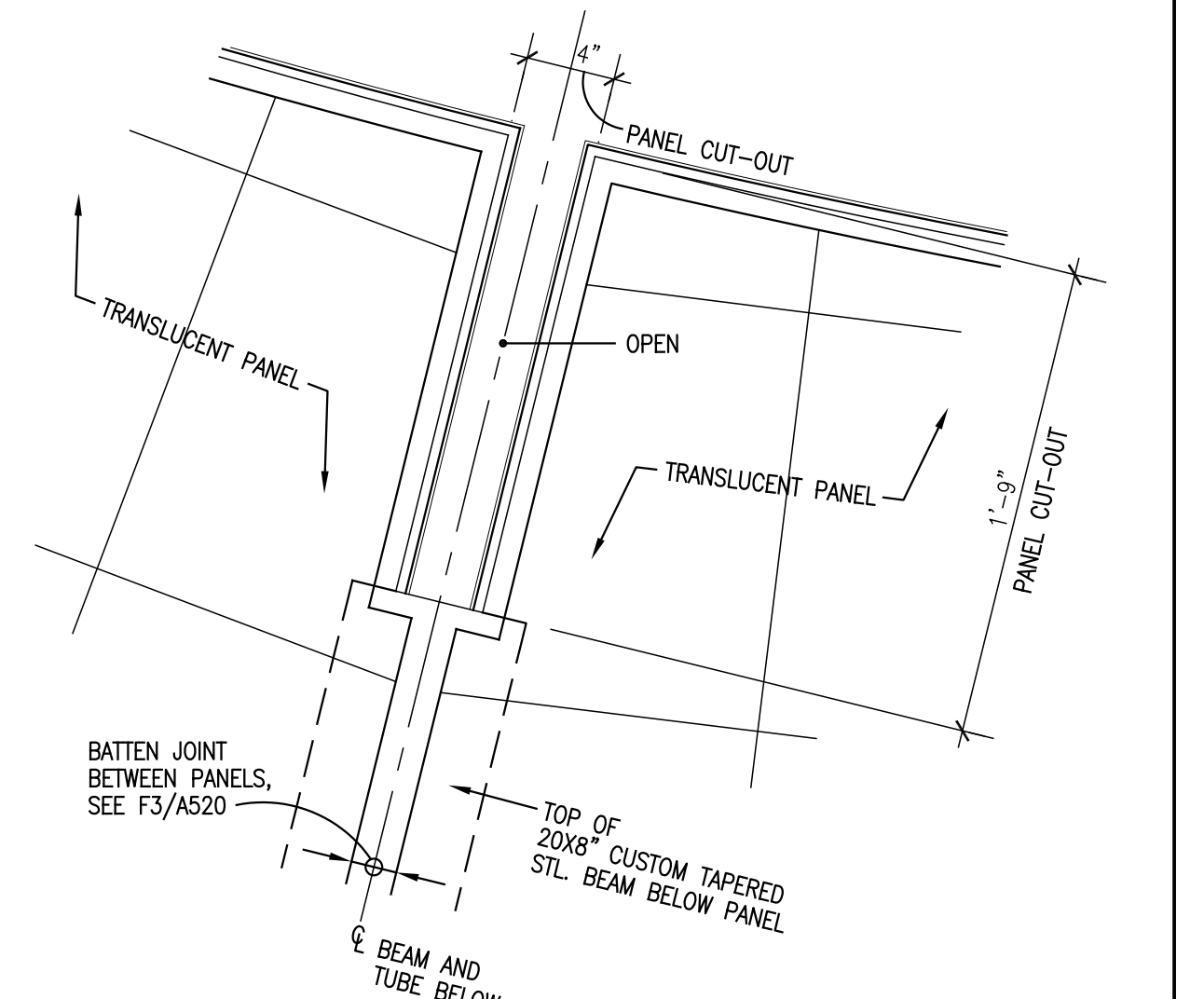
F3 DETAIL AT TAPERED BEAM
SCALE: 1/2" = 1'-0"



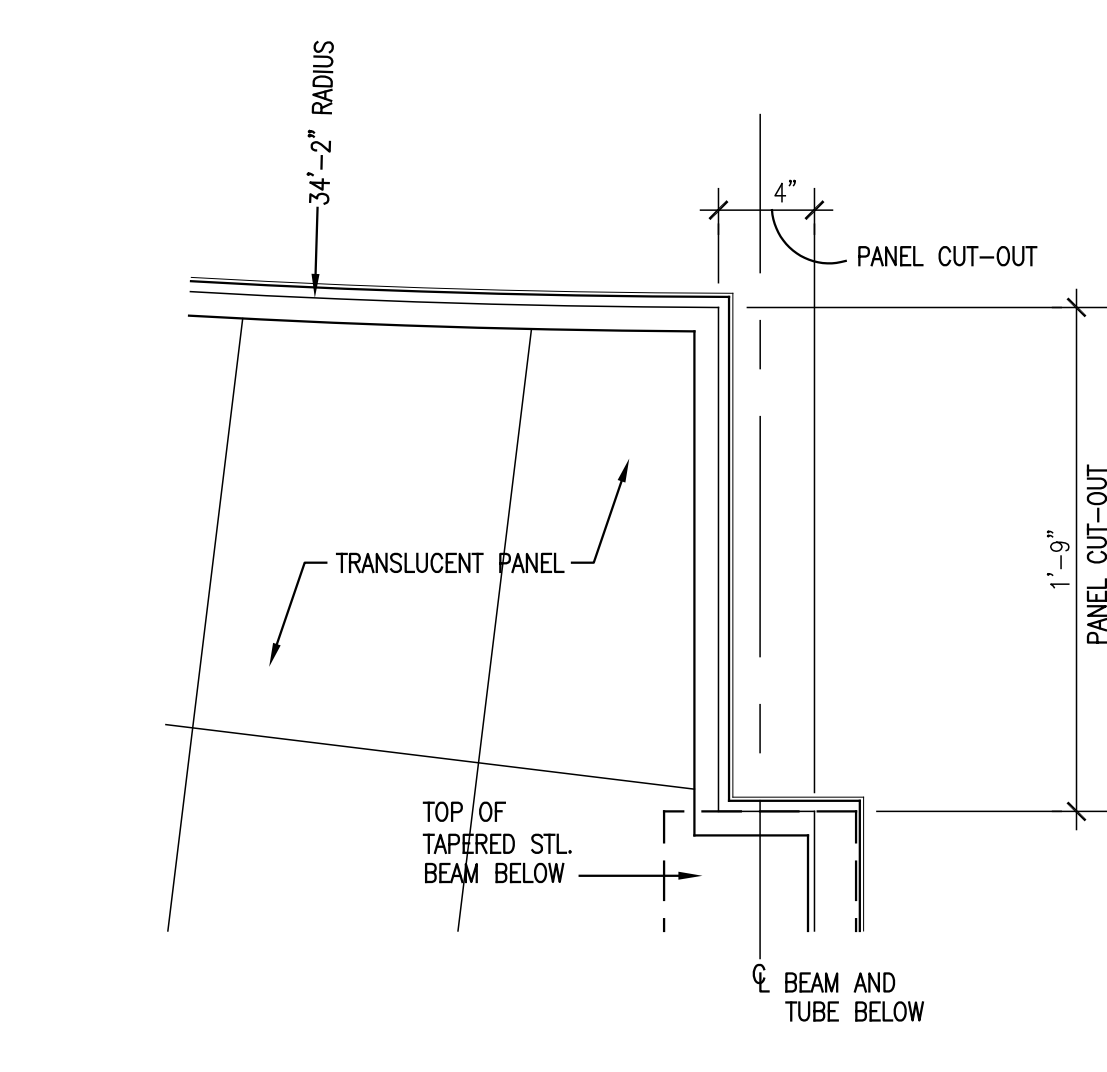
E4 DETAIL AT LAP JOINT
SCALE: 1/2" = 1'-0"



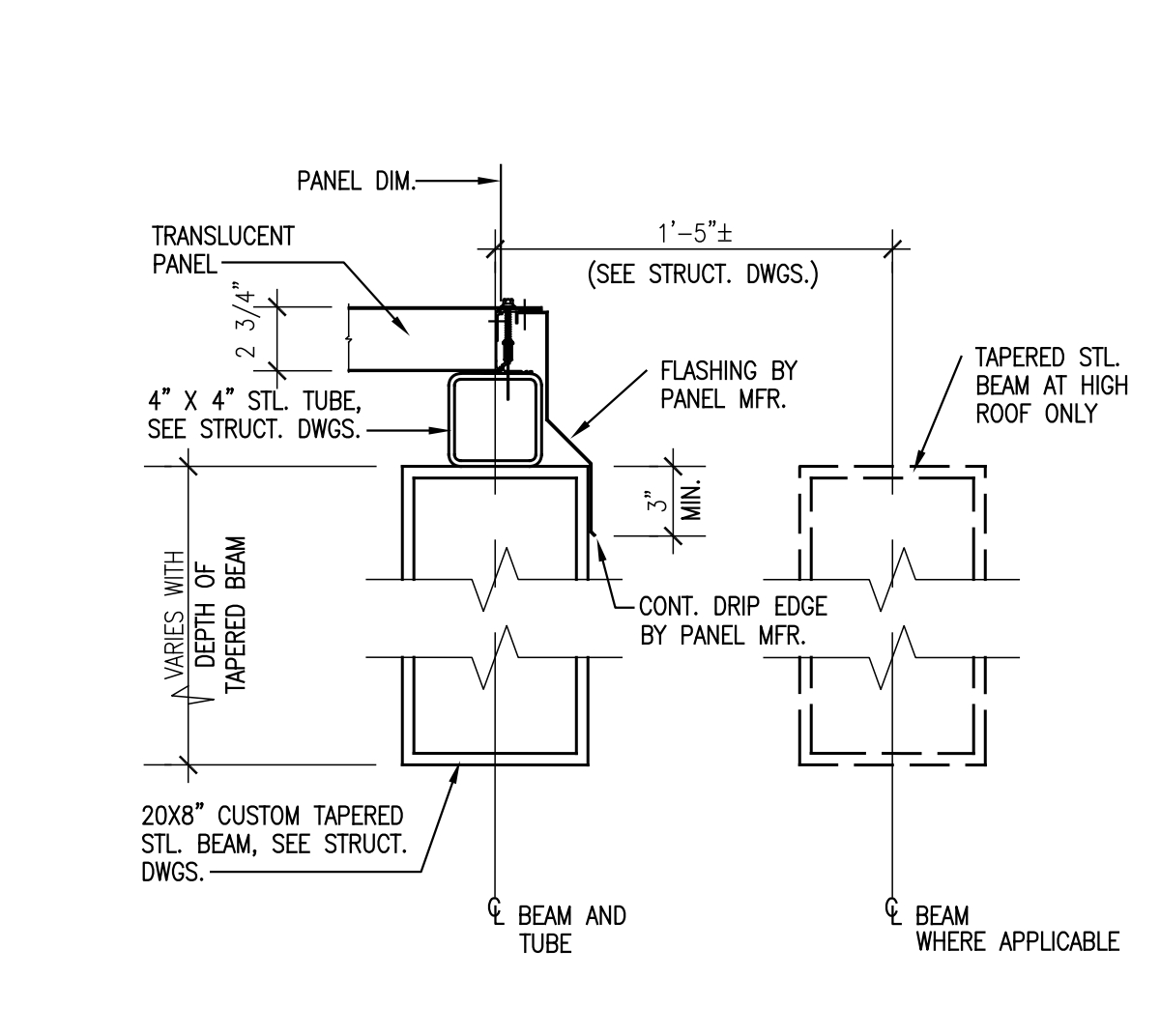
F4 DETAILS AT PANEL TOP AND BOTTOM EDGES
SCALE: 1/2" = 1'-0"



D5 PLAN DETAIL AT INTERMEDIATE PANEL CUT-OUT
SCALE: 1/2" = 1'-0"



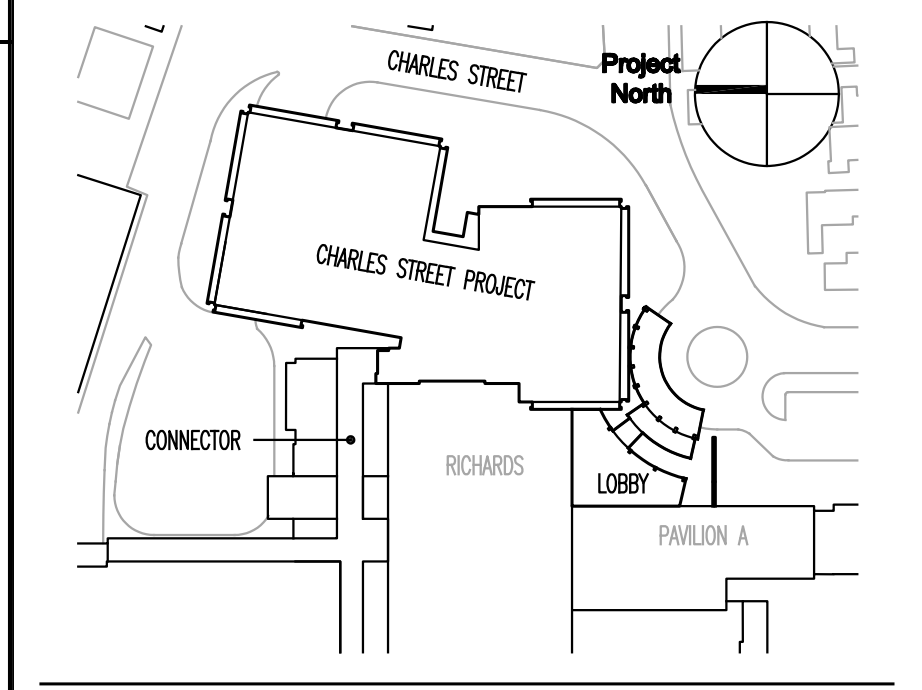
E5 PLAN DETAIL AT CORNER PANEL CUT-OUT
SCALE: 1/2" = 1'-0"



F5 DETAIL AT TAPERED BEAM(S)
SCALE: 1/2" = 1'-0"

FOR PERMIT ONLY
NOT FOR CONSTRUCTION

MARK ISSUE DATE DESCRIPTION
PERMIT 09/24/04 PERMIT SET - NOT FOR CONSTRUCTION
Issue Log



Key Plan

TRO
ARCHITECTURE
PLANNING
ENGINEERING
INTERIOR DESIGN
The Ritchie Organization
80 Bridge Street
Newton, MA 02459-1194
617-552-9100

Maine Medical Center
Charles Street Project
Portland, Maine MMC Project No. 21841

Drawing Title
**FREESTANDING CANOPY
ROOF DETAILS**

Commission No.	4673	Date Issued	
Scale	AS NOTED	Sheet Number	
Drawn By	RAC		
Approved By			
Filename	4673AS20.dwg		
Copyright	© 2004 The Ritchie Organization		

A520