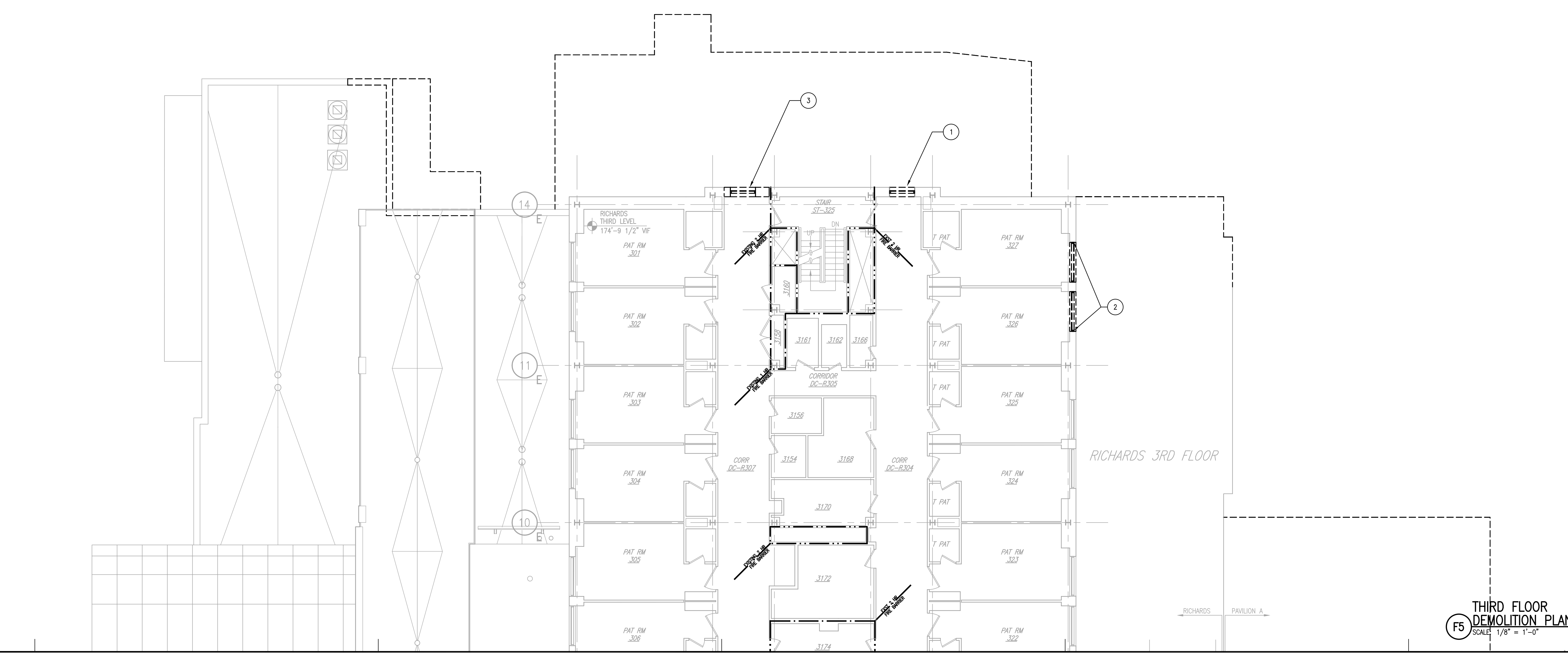


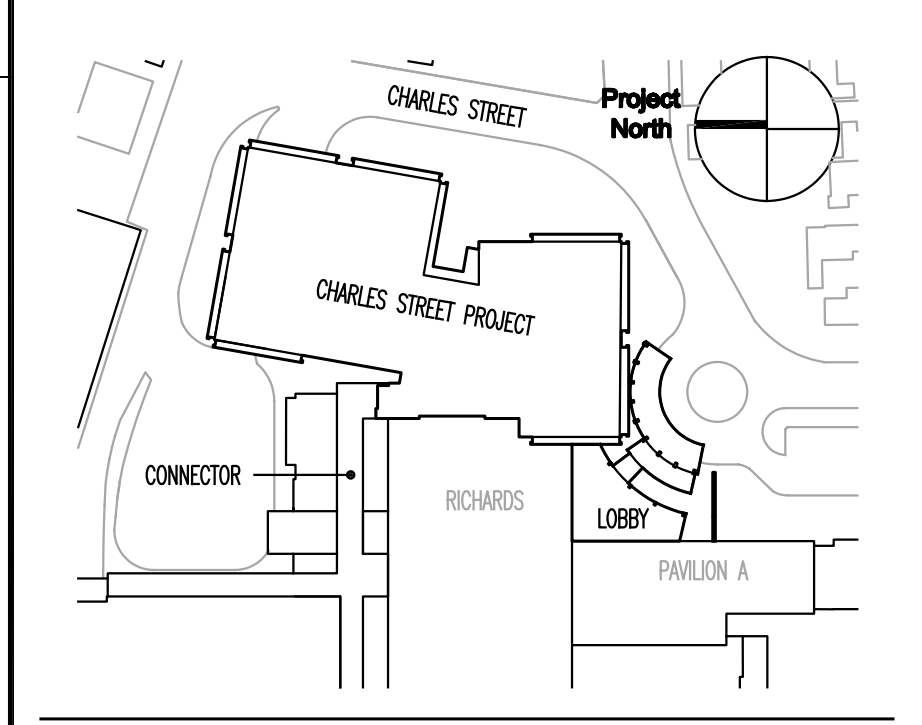
F3 SECOND FLOOR DEMOLITION PLAN
SCALE: 1/8" = 1'-0"



F5 THIRD FLOOR DEMOLITION PLAN
SCALE: 1/8" = 1'-0"

- General Notes:**
- 1) FOR GENERAL DEMOLITION NOTES, REFER TO GENERAL NOTES ON DRAWING 0002.
 - 2) FOR PARTIAL DEMOLITION DUE TO MECHANICAL TIE-INS AT THE MAIN BUILDING AND SOUTH WING, SEE MECH DWGS.
 - 3) FOR SITE DEMOLITION AND SALVAGED ITEMS, REFER TO CIVIL DRAWINGS.
 - 4) FOR ELECTRICAL AND PLUMBING DEMOLITION, REFER TO ELECTRICAL AND PLUMBING DEMOLITION DWGS.
- KEYED NOTES FOR REMOVAL:**
- 1 REMOVE EXISTING WINDOW AND FRAME IN ITS ENTIRETY (TYP EVERY FLOOR)
 - 2 REMOVE EXISTING JAMB SILL AND HEAD AS REQUIRED TO ACCOMMODATE FIRE SHUTTER
 - 3 REMOVE EXISTING WINDOW FRAME AND EXTERIOR ASSEMBLY FOR CONSTRUCTION OF NEW CONNECTOR, REPAIR EXISTING CORRIDOR TO MATCH EXISTING FINISH
 - 4 ALTERNATE #7 REMOVE PORTIONS OF ROOF, ASSOCIATED ROOFING, REFRAME STRUCTURE AS REQUIRED, SEE STRUCTURAL
 - 5 REMOVE EXISTING ROOF OF ELEC. VAULT IN ITS ENTIRETY

MARK	ISSUE DATE	DESCRIPTION
FOR PERMIT ONLY NOT FOR CONSTRUCTION		
PERMIT	09/24/04	PERMIT SET - NOT FOR CONSTRUCTION
Issue Log		



TRO
ARCHITECTURE
PLANNING
ENGINEERING
INTERIOR DESIGN

The Ritchie Organization
80 Bridge Street
Newton, MA 02459-1194
978-552-9100

Maine Medical Center
Charles Street Project
Portland, Maine MMC Project No. 21841

Drawing Title
SECOND AND THIRD FLOOR DEMOLITION PLANS

Commission No.	4673	Date Issued	
Scale	1/8" = 1'-0"	Sheet Number	A102
Drawn By	JW		
Approved By	JW		
Filename	4673A102.dwg		
Copyright	© 2004 The Ritchie Organization		