

© 2018 RYAN SENATORE ARCHITECTURE

FIELD OFFICE FOR
TURNER CONSTRUCTION COMPANY
MAINE MEDICAL CENTER
870 CONGRESS STREET, PORTLAND, MAINE



RYAN SENATORE
ARCHITECTURE
565 CONGRESS STREET
PORTLAND, MAINE 04101
207-650-6414
senatorearchitecture.com

CONSULTANTS:

REVISIONS:

DATE: 16 FEBRUARY 2018

PROJECT No. 1806

DRAWN BY: RRT, RJS

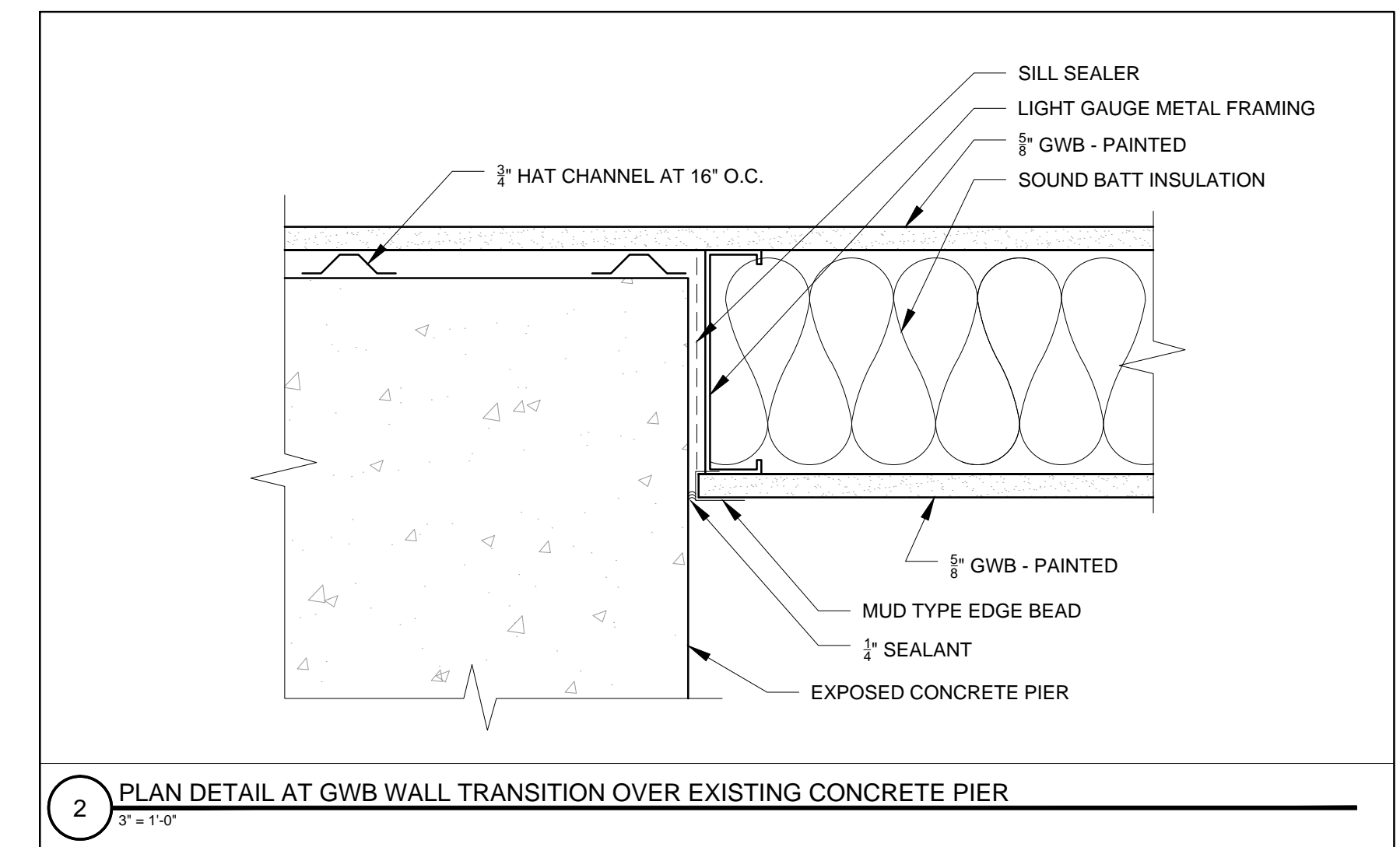
CHECKED BY: RJS

SCALE: AS NOTED

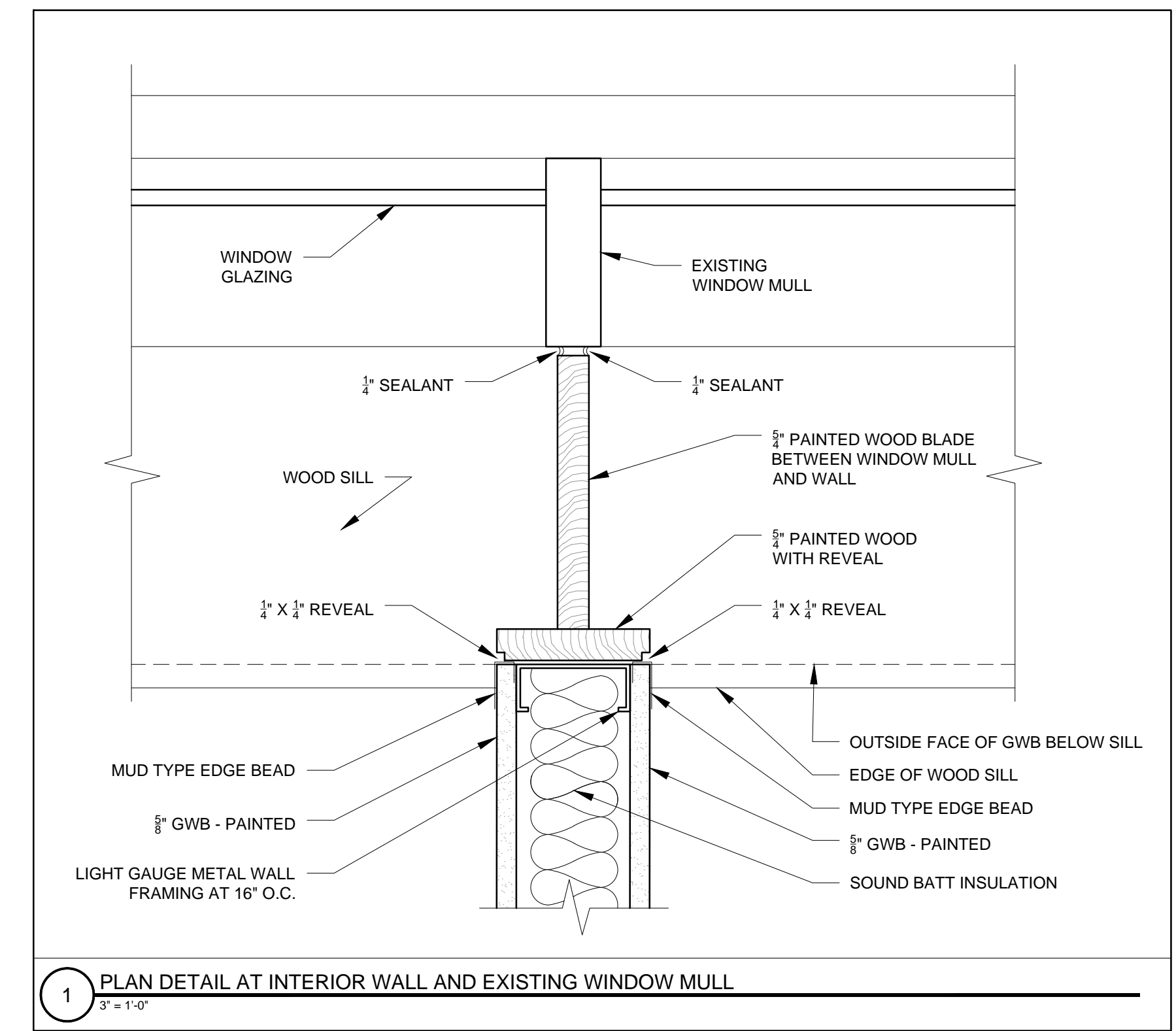
SHEET TITLE:

DETAILS

A5-0



2 PLAN DETAIL AT GWB WALL TRANSITION OVER EXISTING CONCRETE PIER
3/8" = 1'-0"



1 PLAN DETAIL AT INTERIOR WALL AND EXISTING WINDOW MULL
3/8" = 1'-0"