

© 2018 RYAN SENATORE ARCHITECTURE

FIELD OFFICE FOR
TURNER CONSTRUCTION COMPANY
MAINE MEDICAL CENTER
870 CONGRESS STREET, PORTLAND, MAINE



RYAN SENATORE
ARCHITECTURE
565 CONGRESS STREET
PORTLAND, MAINE 04101
207-650-6414
senatorearchitecture.com

CONSULTANTS:

REVISIONS:

DATE: 16 FEBRUARY 2018

PROJECT No. 1806

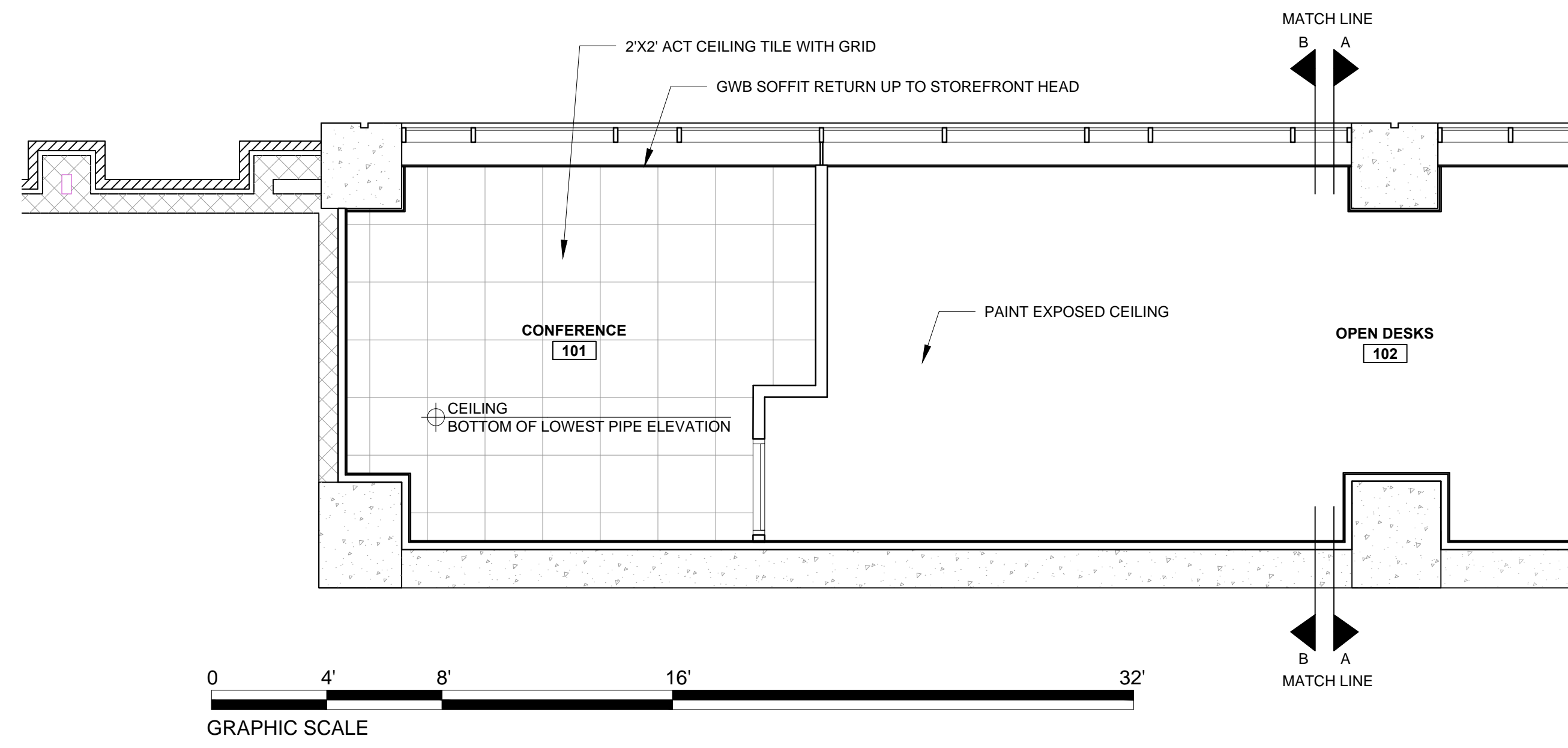
DRAWN BY: RRT, RJS

CHECKED BY: RJS

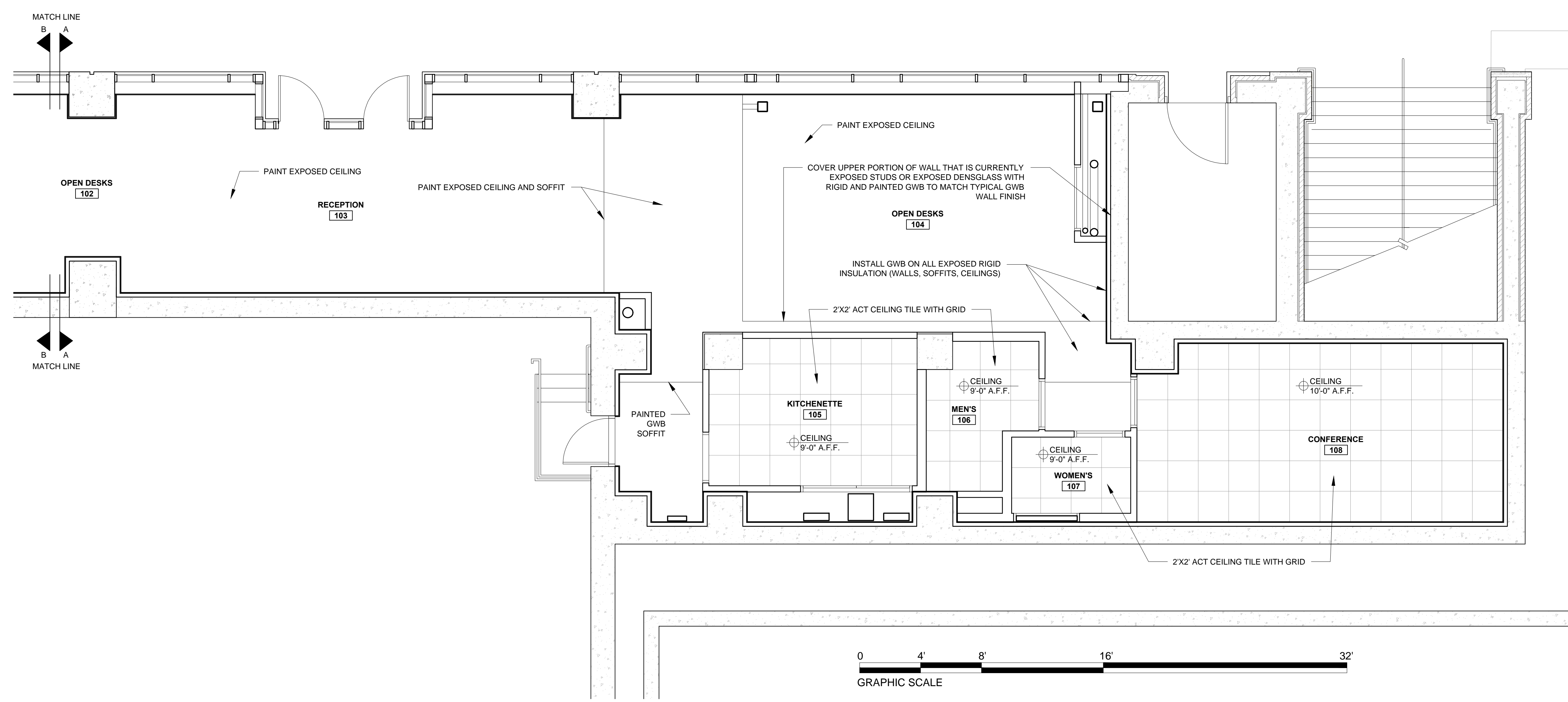
SCALE: AS NOTED

SHEET TITLE:
REFLECTED
CEILING PLAN

A1-2



2 FIRST FLOOR REFLECTED CEILING PLAN - PART B
1/4" = 1'-0"



1 FIRST FLOOR REFLECTED CEILING PLAN - PART A
1/4" = 1'-0"