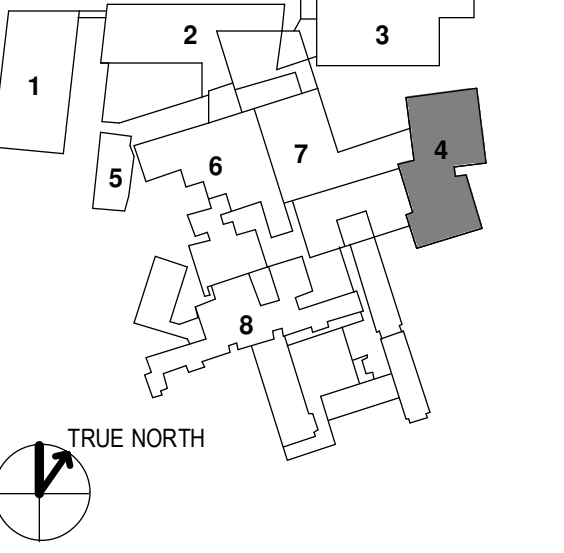


- 1 - GILLMAN GARAGE
- 2 - CONGRESS STREET
- 3 - VISITOR GARAGE
- 4 - EAST TOWER
- 5 - CENTRAL UTILITY PLANT
- 6 - BEAN BUILDING
- 7 - RICHARDS BUILDING
- 8 - MAINE GENERAL BUILDING

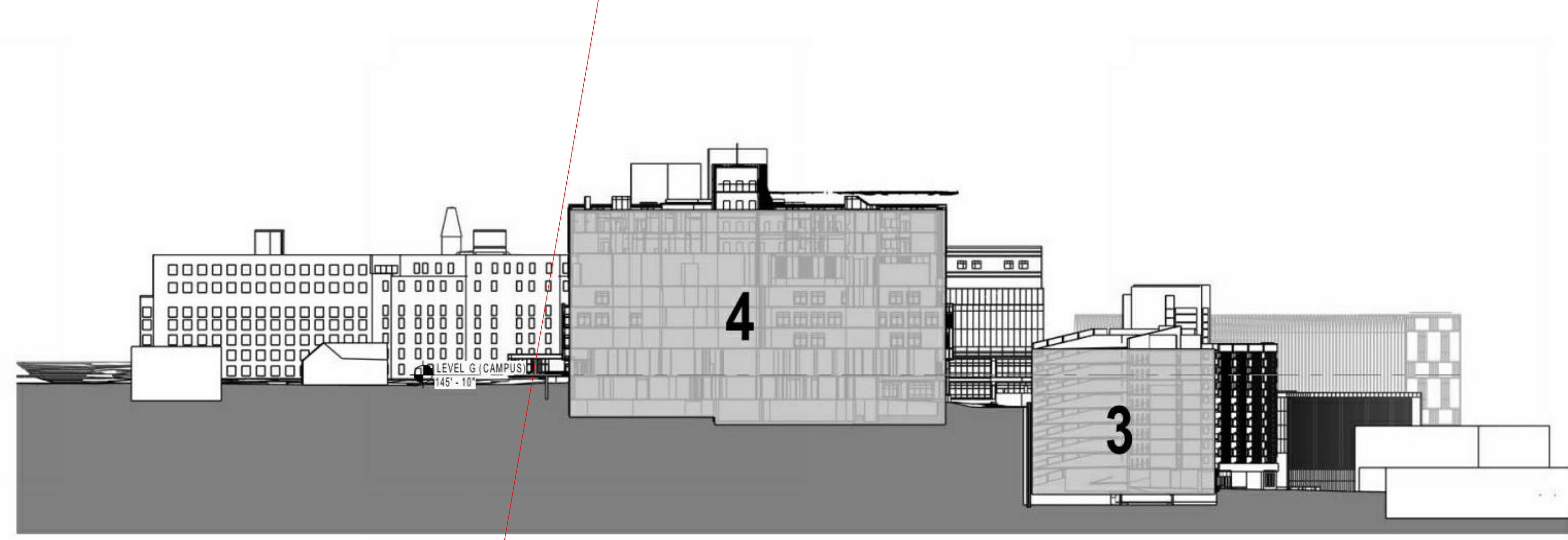
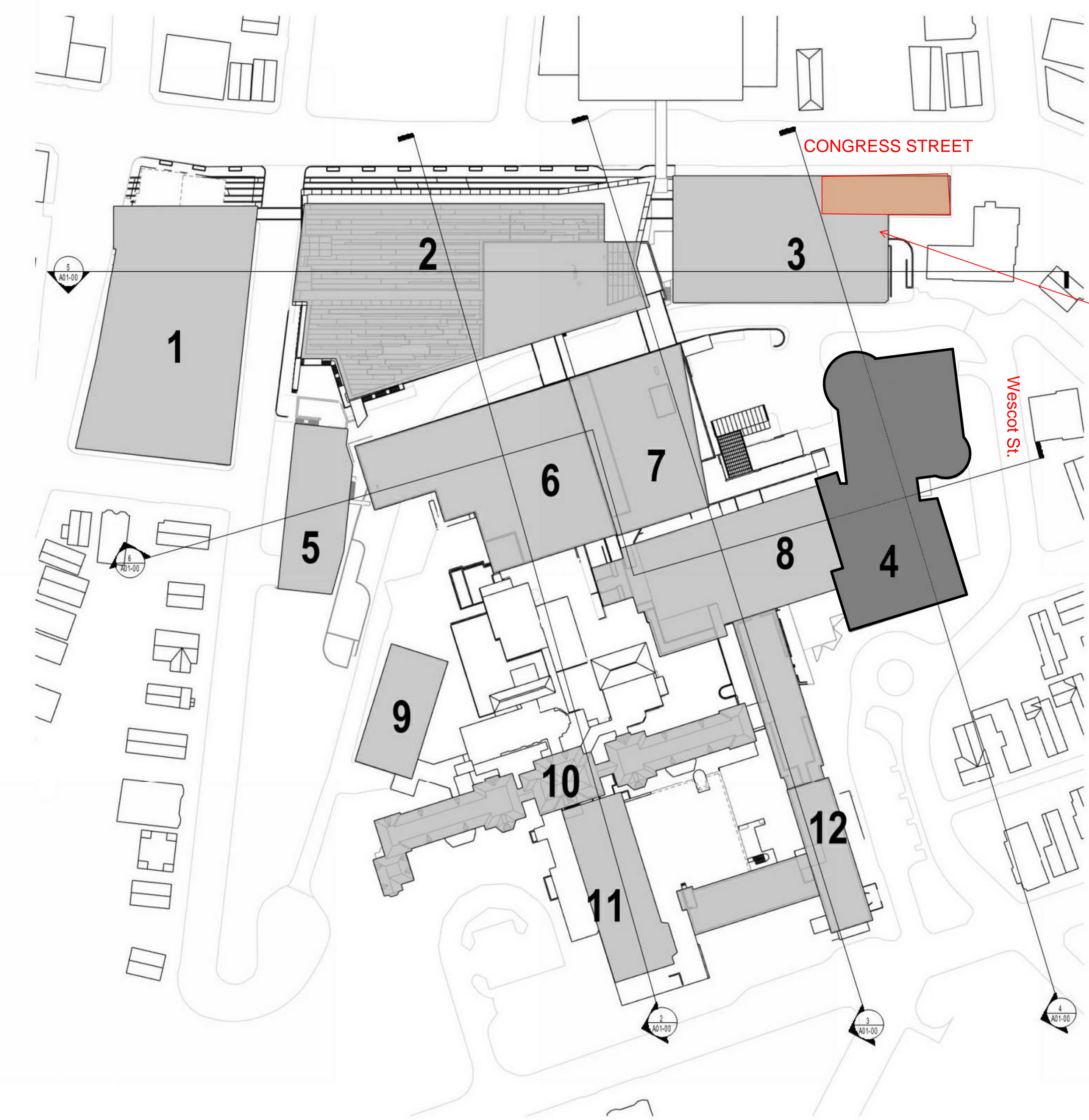


NO	ISSUE	DATE
Job Number	152181.000	
Drawn	TEAM	
Checked		
Approved	JK	

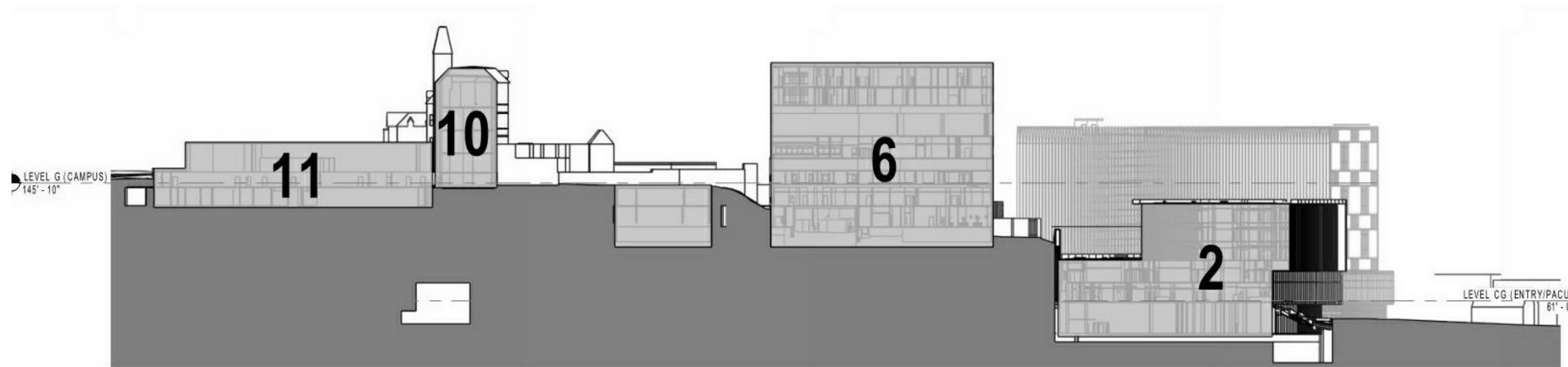
CAMPUS SITE PLAN

- 1 GILLMAN GARAGE
- 2 CONGRESS STREET BUILDING
- 3 VISITOR'S GARAGE
- 4 EAST TOWER
- 5 CENTRAL UTILITY PLANT
- 6 BEAN BUILDING
- 7 BEAN AMBULATORY
- 8 RICHARDS BUILDING
- 9 ESB
- 10 MAINE GENERAL BUILDING (MGB)
- 11 DANA CENTER
- 12 PAVILIONS

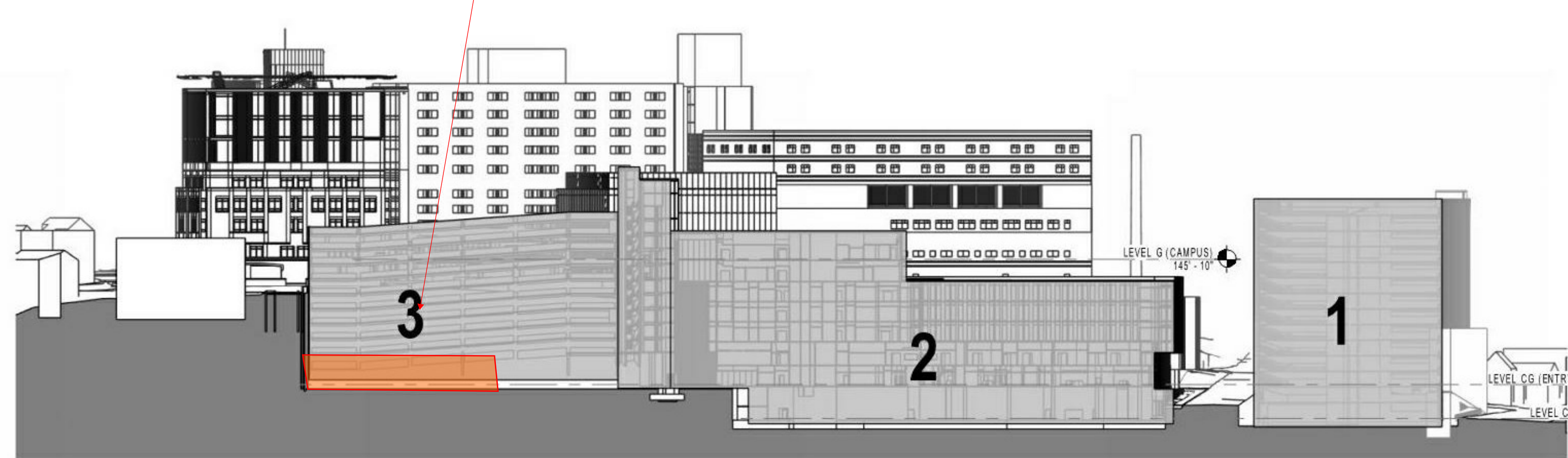
**870 Congress Street
OFFICE FIT-OUT LOCATION**
Parking located in Maine Medical Center
Contractor Lot -



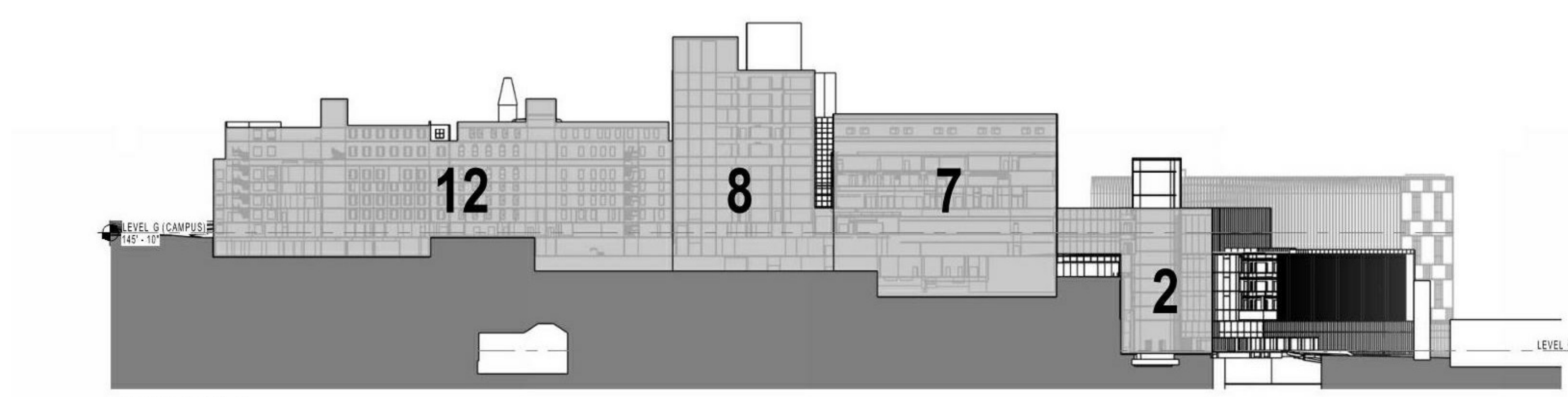
4 SECTION C
1/64" = 1'-0"



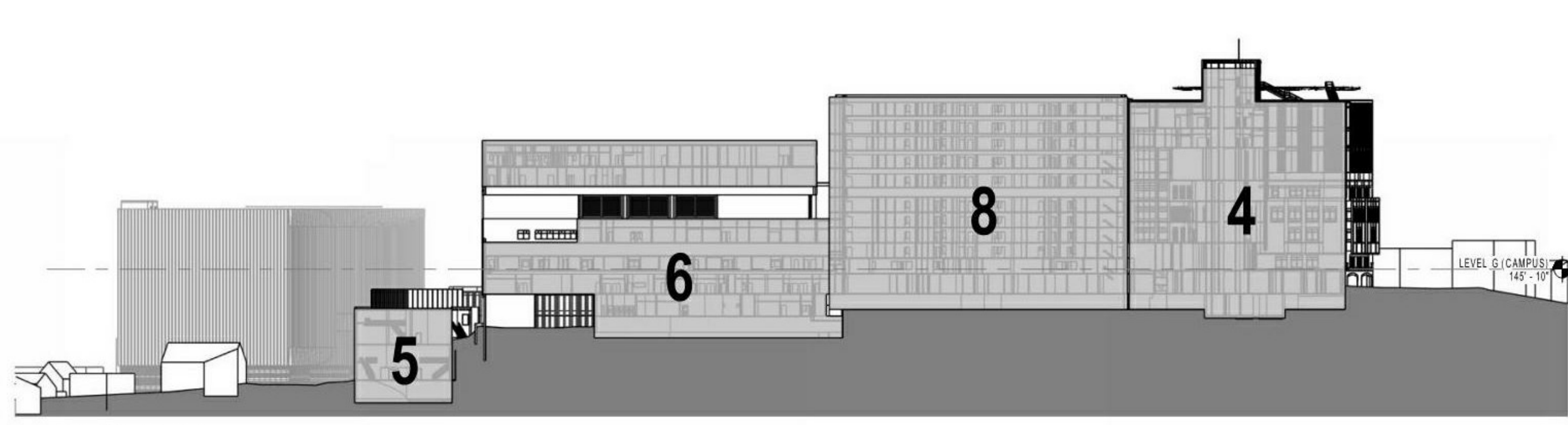
2 SECTION A
1/64" = 1'-0"



5 SECTION D
1/64" = 1'-0"



3 SECTION B
1/64" = 1'-0"



6 SECTION E
1/64" = 1'-0"

1 SITE PLAN - DIAGRAM
1/64" = 1'-0"