

01-22-10 Revised Units

Crescent Heights Apartment Suites

Portland, Maine

Owner
 Crescent Heights LLC

Architect
 Winton Scott Architects

Landscape / Civil Engineer
 DeLuca-Hoffman Associates, Inc.

Structural Engineer
 Becker Structural Eng.

Mechanical Engineer
 Mechanical Systems Eng.

Lighting / Electrical Engineer
 Bartlett Design

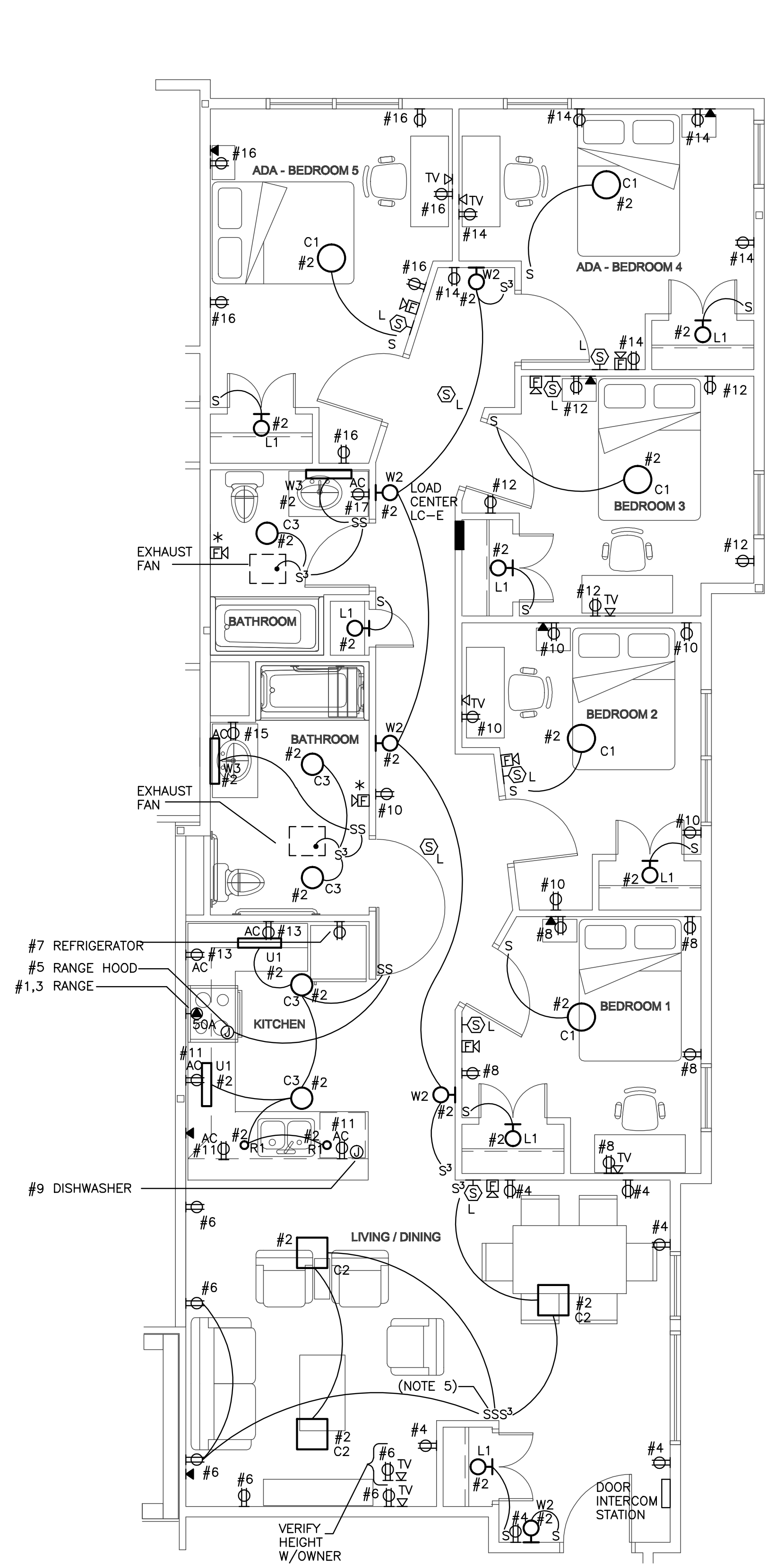
UNIT PLANS

UNIT TYPES
 E, F & G

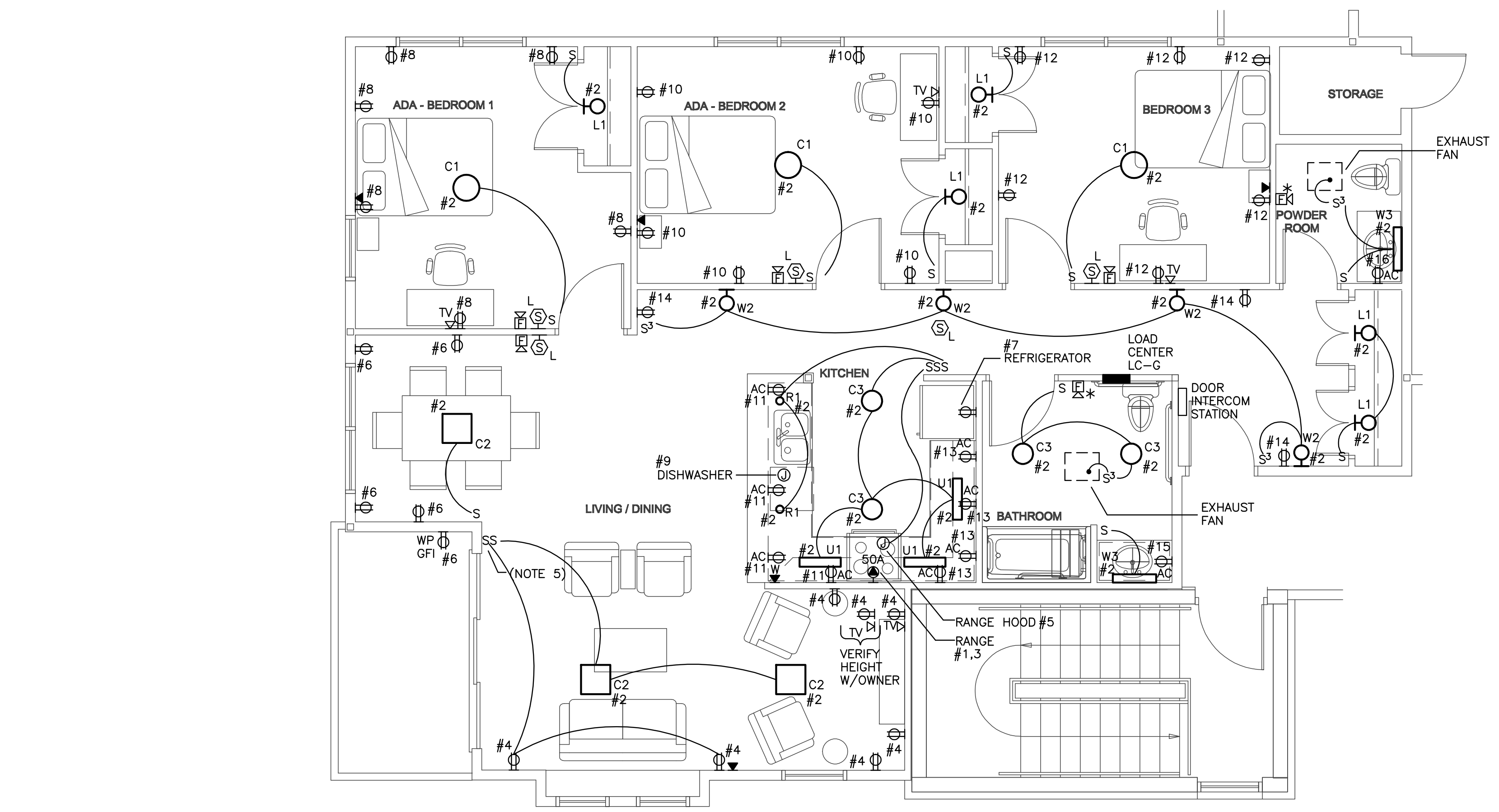
E2.3

Scale: 1/4" = 1'-0"

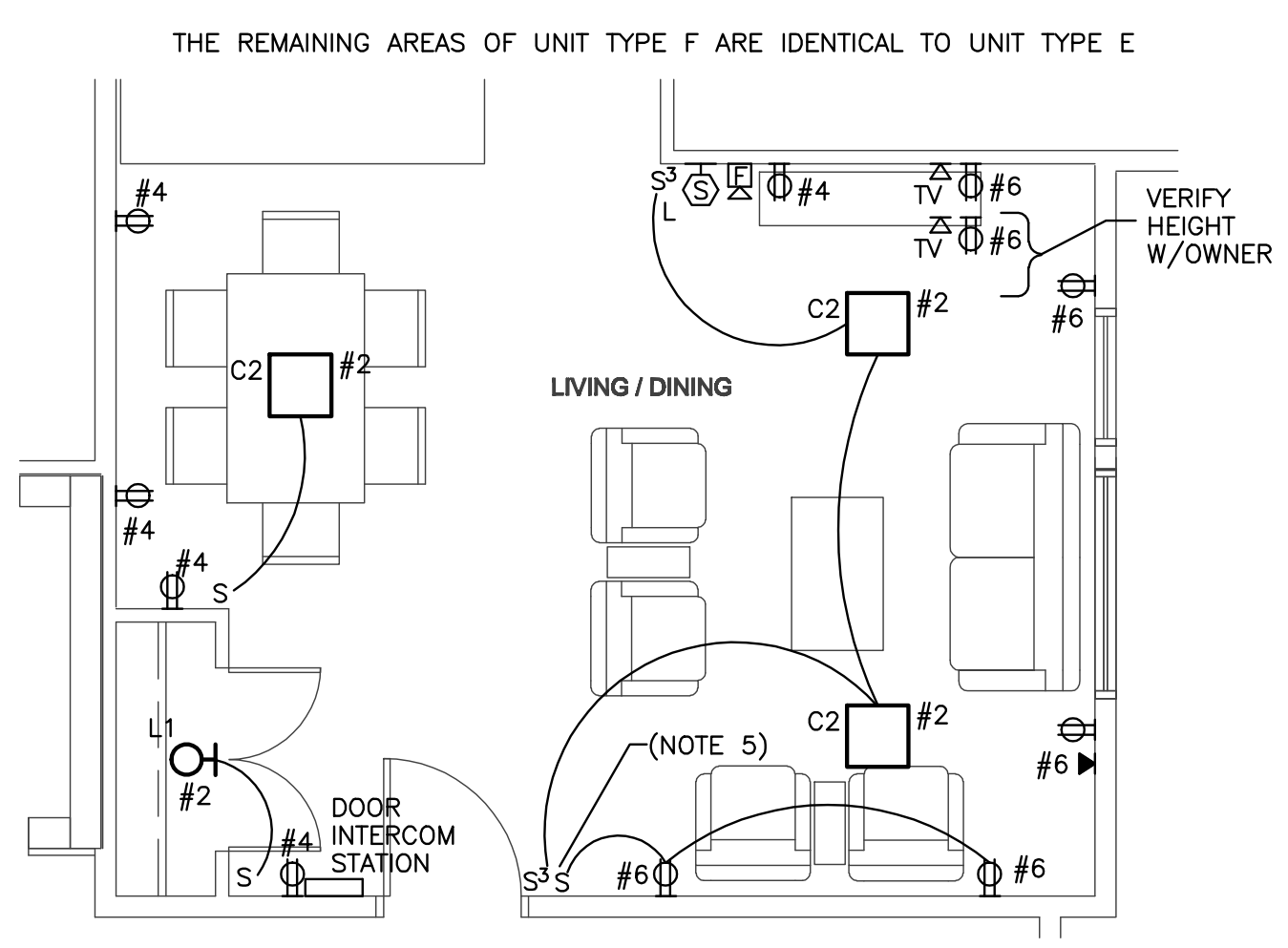
MARCH 17, 2009



UNIT TYPE E
 1/4" = 1'-0"
 (TYPICAL FOR UNIT 103)



UNIT TYPE G
 1/4" = 1'-0"
 (TYPICAL FOR UNIT 301)



UNIT TYPE F
 1/4" = 1'-0"
 (TYPICAL FOR UNIT 203)

- NOTES:
1. ALL 120V RECEPTACLES IN KITCHENS AND BATHROOMS SHALL BE GFCI RATED EXCEPT FOR THE DISHWASHER AND REFRIGERATOR.
 2. CIRCUITS IN INDIVIDUAL UNITS REFER TO UNIT LOAD CENTERS.
 3. MINIMUM CIRCUIT BREAKER SIZE SHALL BE 20 AMP. MINIMUM WIRE SIZE SHALL BE #12 AWG.
 4. CONNECT ALL RECEPTACLE CIRCUITS TO ARC-FAULT TYPE CIRCUIT BREAKERS IN LOAD CENTERS.
 5. FOR RECEPTACLES INDICATED, CONNECT THE TOP HALF OF THE RECEPTACLE TO LIGHT SWITCH AS INDICATED, BOTTOM HALF SHALL REMAIN HOT AT ALL TIMES.
 6. ALL RECEPTACLES SHALL BE TAMPER-PROOF.
 7. SEE SHEET E3.1 FOR EXHAUST FAN WIRING DIAGRAM.
 8. MOUNT THE LOAD CENTERS SO THAT THE HIGHEST OPERABLE PART IS NO GREATER THAN 48" AFF.
 9. FIRE ALARM NOTIFICATION APPLIANCES IN SLEEPING AREAS WITHIN LIVING UNITS SHALL HAVE A VISUAL INTENSITY OF 110 CANDELA WHERE THE APPLIANCE IS MOUNTED 24" OR MORE BELOW THE CEILING, OR 177 CANDELA WHERE THE APPLIANCE IS MOUNTED LESS THAN 24" BELOW THE CEILING. NOTIFICATION APPLIANCES SHALL BE INSTALLED AT 80" ABOVE FINISHED FLOOR. ALL OTHER NOTIFICATION APPLIANCES LOCATED WITHIN LIVING UNITS SHALL HAVE A VISUAL INTENSITY OF 15 CANDELA.
 10. LIGHT SWITCHES FOR TYPE L1 LIGHTS IN CLOSETS SHALL BE DOOR-HINGE SWITCHES.