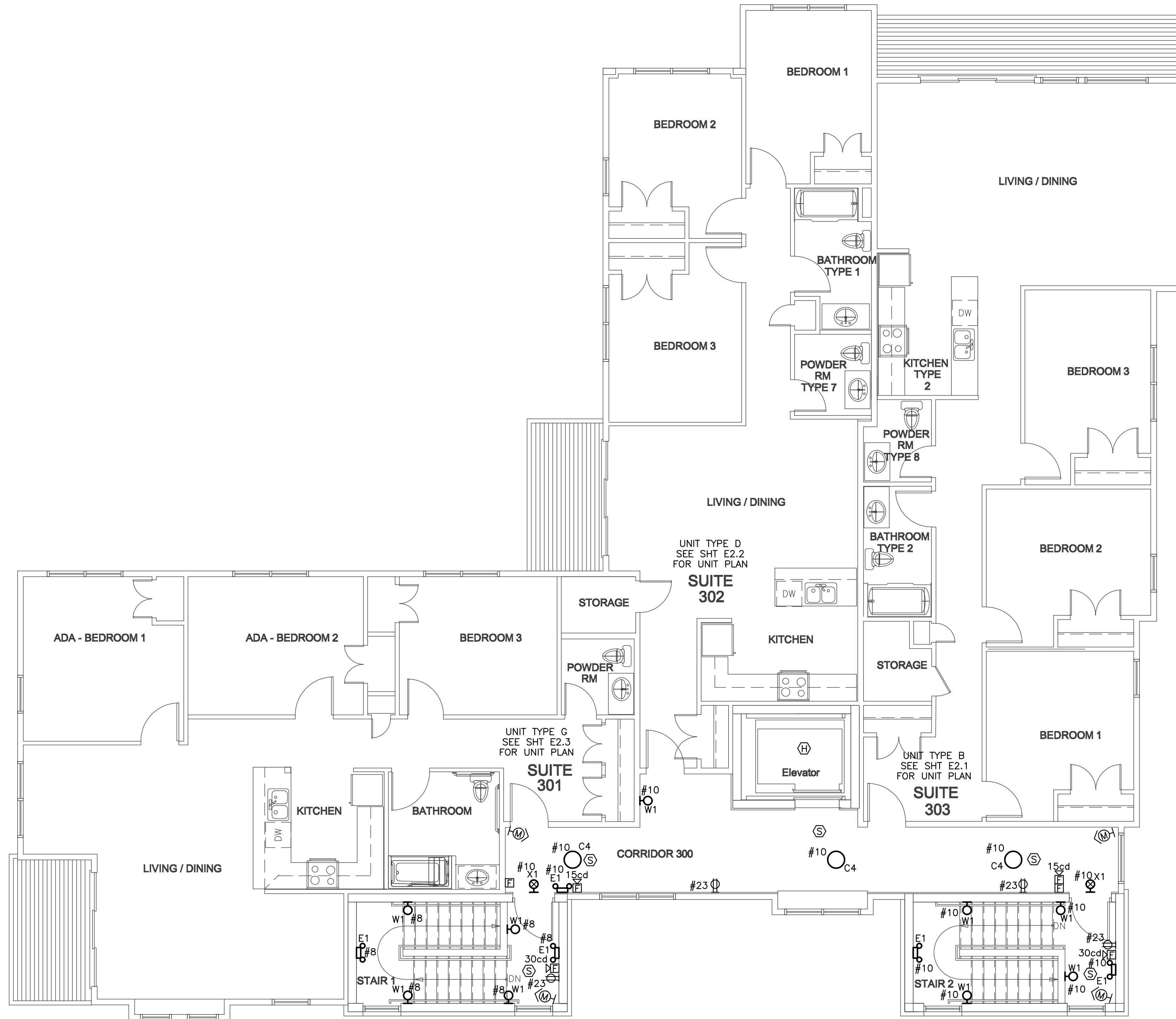


Lawrence E. Bartlett



THIRD FLOOR PLAN
3/16" = 1'-0"

Crescent Heights Apartment Suites

Portland, Maine

Owner
Crescent Heights LLC

Architect
Winton Scott Architects

Landscape / Civil Engineer
DeLuca-Hoffman
Associates, Inc.

Structural Engineer
Becker Structural Eng.

Mechanical Engineer
Mechanical Systems Eng.

Lighting / Electrical Engineer
Bartlett Design

BUILDING PLANS
THIRD FLOOR
PLAN

E1.4

Scale: 3/16" = 1'-0"

MARCH 17, 2009