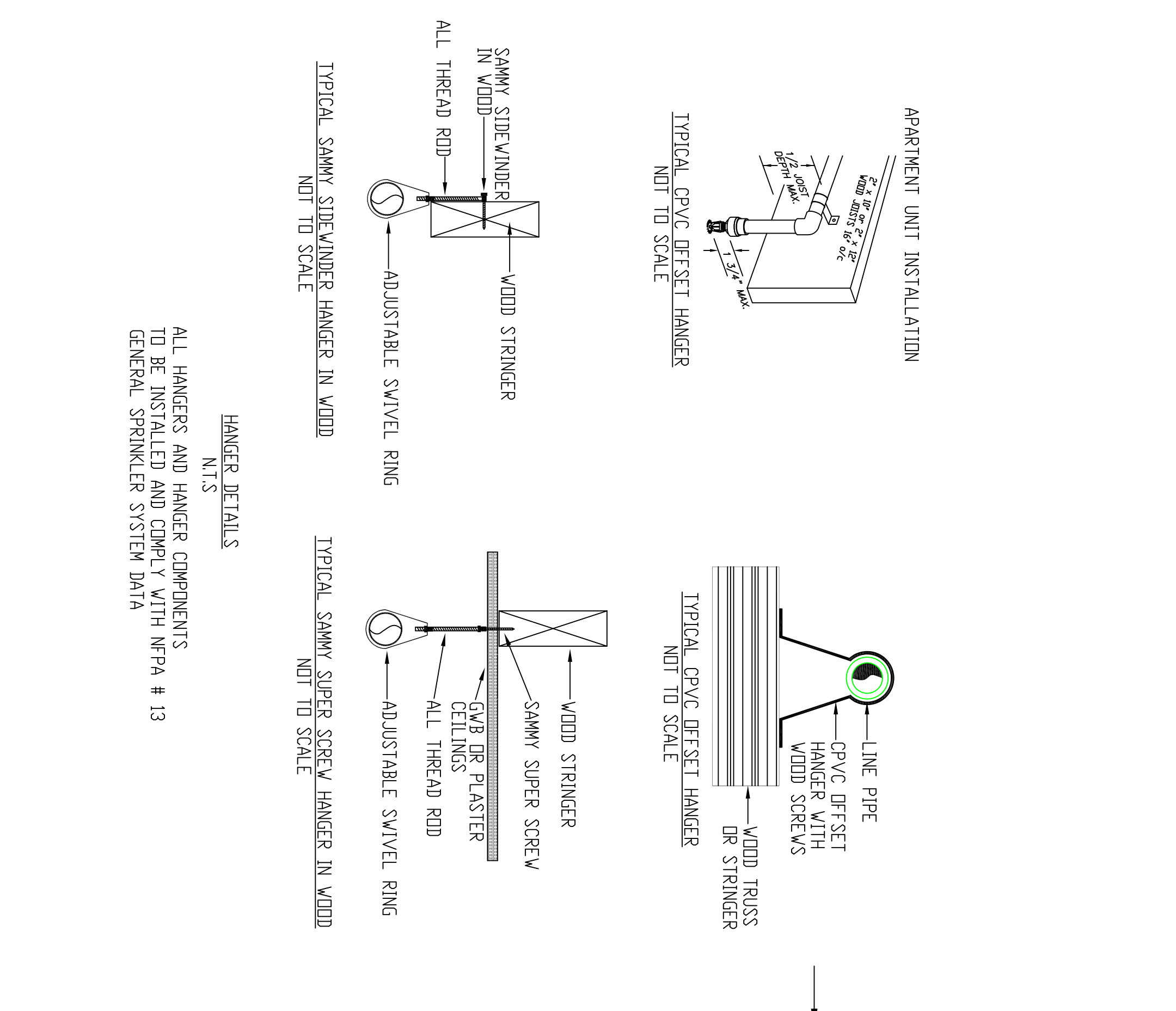


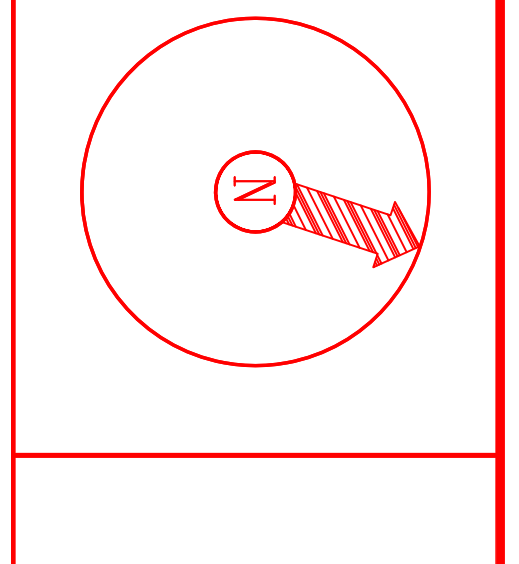
HYDRAULIC-SYSTEM	HYDRAULIC-SYSTEM
<p>THIS BUILDING IS PROTECTED BY A HYDRAULICALLY DESIGNED AUTOMATIC SPRINKLER SYSTEM</p> <p>LOCATION AREA # 1</p> <p>NO. OF SPRINKLERS 4</p> <p>BASIS OF DESIGN</p> <p>1. IDENTIFY 18 GPM @ 50 FT</p> <p>2. DESIGN AREA OF PROTECTION 500 SQ. FT.</p> <p>SYSTEM DEMAND</p> <p>1. 0PM SPRINKLER 3440 GPM</p> <p>2. BASED ON THE BASIS 2000 PSI</p>	<p>THIS BUILDING IS PROTECTED BY A HYDRAULICALLY DESIGNED AUTOMATIC SPRINKLER SYSTEM</p> <p>LOCATION AREA # 2</p> <p>NO. OF SPRINKLERS 10</p> <p>BASIS OF DESIGN</p> <p>1. IDENTIFY 18 GPM @ 50 FT</p> <p>2. DESIGN AREA OF PROTECTION 1000 SQ. FT.</p> <p>SYSTEM DEMAND</p> <p>1. 0PM SPRINKLER 3440 GPM</p> <p>2. BASED ON THE BASIS 2000 PSI</p>



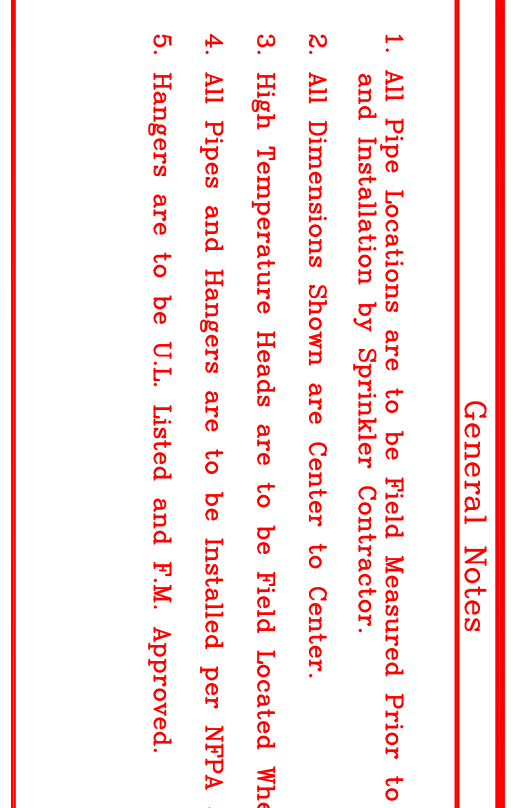
HYDRAULIC-SYSTEM	HYDRAULIC-SYSTEM
<p>THIS BUILDING IS PROTECTED BY A HYDRAULICALLY DESIGNED AUTOMATIC SPRINKLER SYSTEM</p> <p>LOCATION AREA # 3</p> <p>NO. OF SPRINKLERS 10</p> <p>BASIS OF DESIGN</p> <p>1. IDENTIFY 18 GPM @ 50 FT</p> <p>2. DESIGN AREA OF PROTECTION 1000 SQ. FT.</p> <p>SYSTEM DEMAND</p> <p>1. 0PM SPRINKLER 3440 GPM</p> <p>2. BASED ON THE BASIS 2000 PSI</p>	<p>THIS BUILDING IS PROTECTED BY A HYDRAULICALLY DESIGNED AUTOMATIC SPRINKLER SYSTEM</p> <p>LOCATION AREA # 4</p> <p>NO. OF SPRINKLERS 10</p> <p>BASIS OF DESIGN</p> <p>1. IDENTIFY 18 GPM @ 50 FT</p> <p>2. DESIGN AREA OF PROTECTION 1000 SQ. FT.</p> <p>SYSTEM DEMAND</p> <p>1. 0PM SPRINKLER 3440 GPM</p> <p>2. BASED ON THE BASIS 2000 PSI</p>

HYDRAULIC-SYSTEM	HYDRAULIC-SYSTEM
<p>THIS BUILDING IS PROTECTED BY A HYDRAULICALLY DESIGNED AUTOMATIC SPRINKLER SYSTEM</p> <p>LOCATION AREA # 5</p> <p>NO. OF SPRINKLERS 10</p> <p>BASIS OF DESIGN</p> <p>1. IDENTIFY 18 GPM @ 50 FT</p> <p>2. DESIGN AREA OF PROTECTION 1000 SQ. FT.</p> <p>SYSTEM DEMAND</p> <p>1. 0PM SPRINKLER 3440 GPM</p> <p>2. BASED ON THE BASIS 2000 PSI</p>	<p>THIS BUILDING IS PROTECTED BY A HYDRAULICALLY DESIGNED AUTOMATIC SPRINKLER SYSTEM</p> <p>LOCATION AREA # 6</p> <p>NO. OF SPRINKLERS 10</p> <p>BASIS OF DESIGN</p> <p>1. IDENTIFY 18 GPM @ 50 FT</p> <p>2. DESIGN AREA OF PROTECTION 1000 SQ. FT.</p> <p>SYSTEM DEMAND</p> <p>1. 0PM SPRINKLER 3440 GPM</p> <p>2. BASED ON THE BASIS 2000 PSI</p>

HYDRAULIC-SYSTEM	HYDRAULIC-SYSTEM
<p>THIS BUILDING IS PROTECTED BY A HYDRAULICALLY DESIGNED AUTOMATIC SPRINKLER SYSTEM</p> <p>LOCATION AREA # 7</p> <p>NO. OF SPRINKLERS 10</p> <p>BASIS OF DESIGN</p> <p>1. IDENTIFY 18 GPM @ 50 FT</p> <p>2. DESIGN AREA OF PROTECTION 1000 SQ. FT.</p> <p>SYSTEM DEMAND</p> <p>1. 0PM SPRINKLER 3440 GPM</p> <p>2. BASED ON THE BASIS 2000 PSI</p>	<p>THIS BUILDING IS PROTECTED BY A HYDRAULICALLY DESIGNED AUTOMATIC SPRINKLER SYSTEM</p> <p>LOCATION AREA # 8</p> <p>NO. OF SPRINKLERS 10</p> <p>BASIS OF DESIGN</p> <p>1. IDENTIFY 18 GPM @ 50 FT</p> <p>2. DESIGN AREA OF PROTECTION 1000 SQ. FT.</p> <p>SYSTEM DEMAND</p> <p>1. 0PM SPRINKLER 3440 GPM</p> <p>2. BASED ON THE BASIS 2000 PSI</p>



DENALI
FIRE PROTECTION, INC.
DESIGN INSTALLATION SERVICE
78 ROLLER RINK RD.
DEXFORD, MAINE 04270
(207) 539-4226 FAX (207) 539-8544



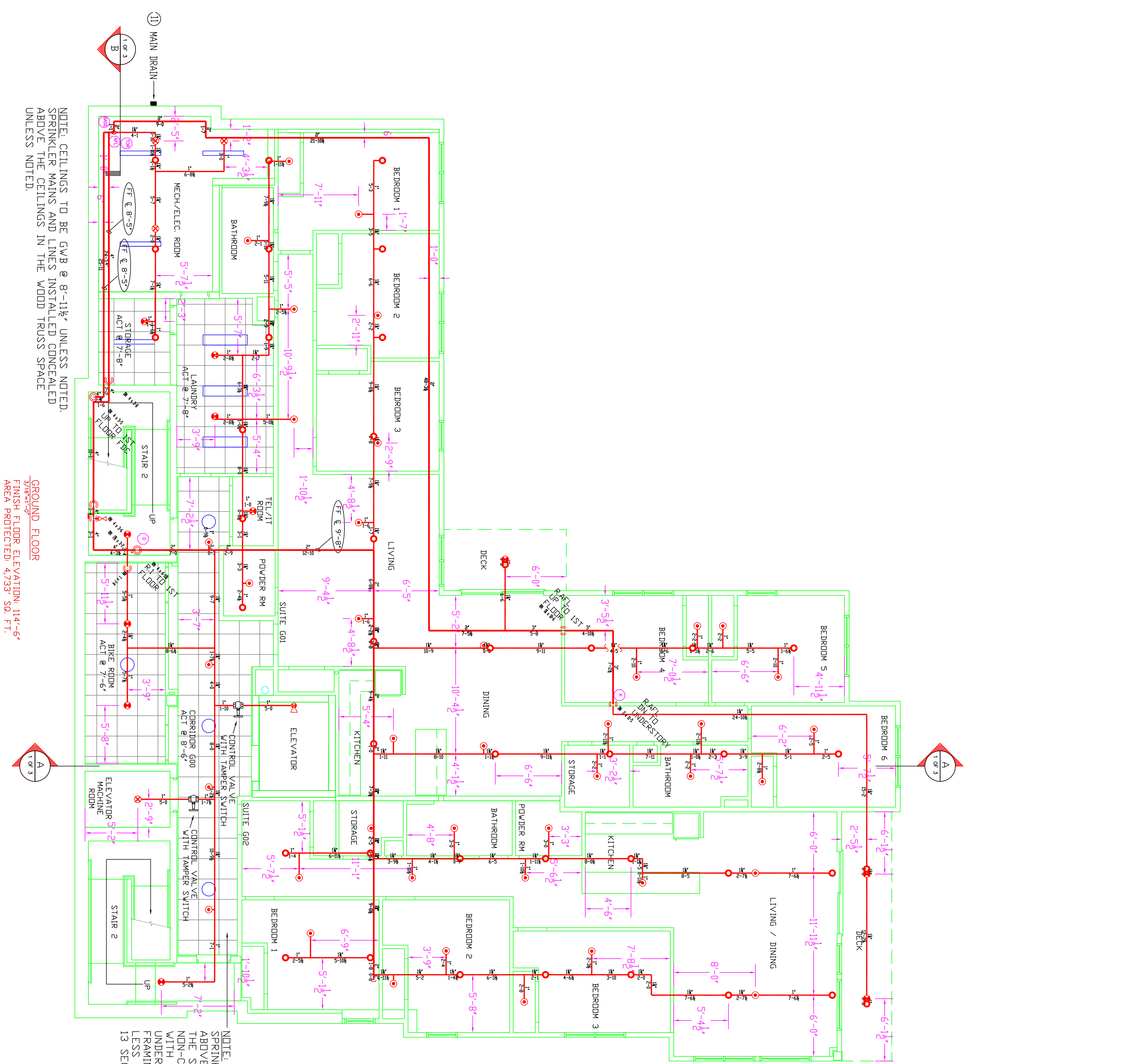
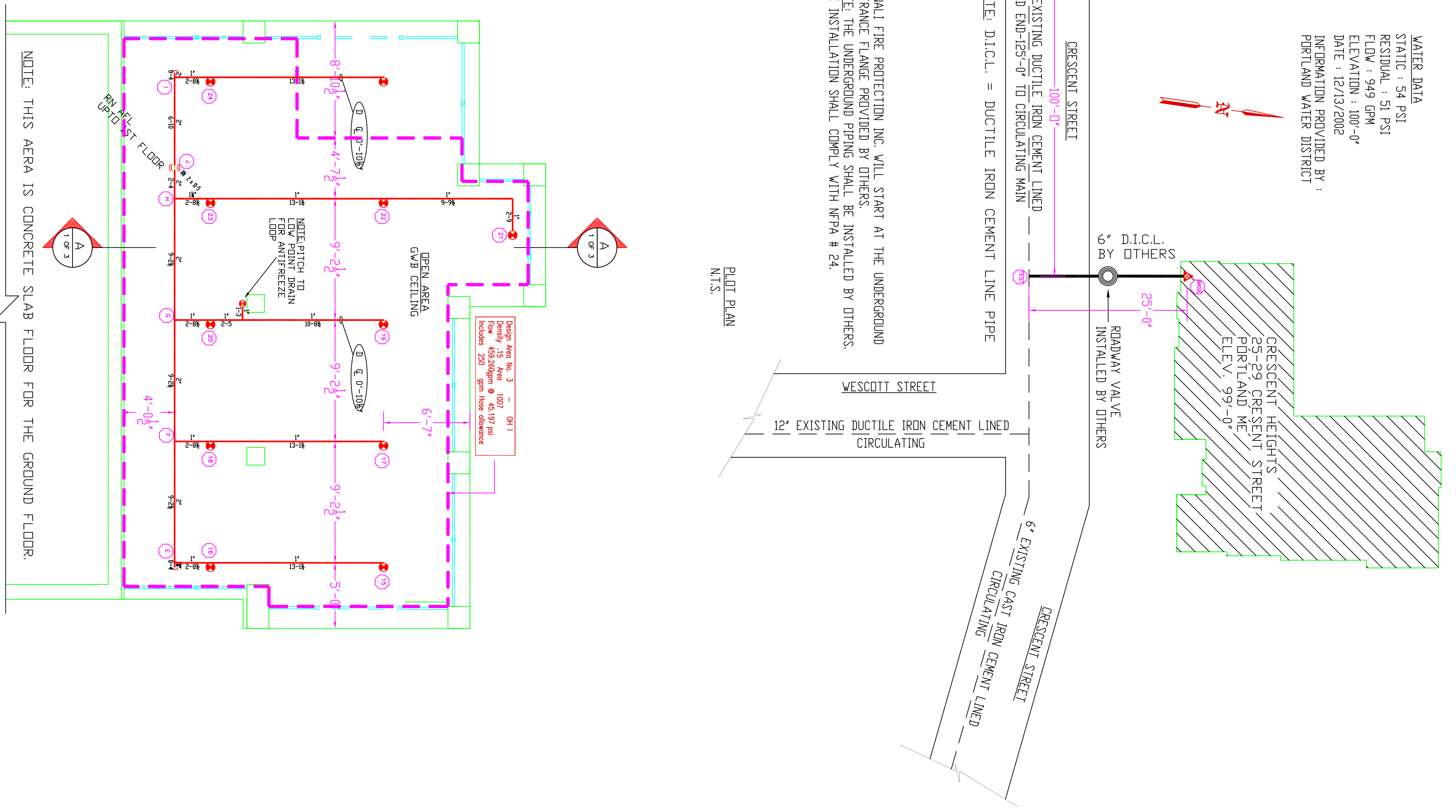
HYDRAULIC-SYSTEM	HYDRAULIC-SYSTEM
<p>THIS BUILDING IS PROTECTED BY A HYDRAULICALLY DESIGNED AUTOMATIC SPRINKLER SYSTEM</p> <p>LOCATION AREA # 9</p> <p>NO. OF SPRINKLERS 10</p> <p>BASIS OF DESIGN</p> <p>1. IDENTIFY 18 GPM @ 50 FT</p> <p>2. DESIGN AREA OF PROTECTION 1000 SQ. FT.</p> <p>SYSTEM DEMAND</p> <p>1. 0PM SPRINKLER 3440 GPM</p> <p>2. BASED ON THE BASIS 2000 PSI</p>	<p>THIS BUILDING IS PROTECTED BY A HYDRAULICALLY DESIGNED AUTOMATIC SPRINKLER SYSTEM</p> <p>LOCATION AREA # 10</p> <p>NO. OF SPRINKLERS 10</p> <p>BASIS OF DESIGN</p> <p>1. IDENTIFY 18 GPM @ 50 FT</p> <p>2. DESIGN AREA OF PROTECTION 1000 SQ. FT.</p> <p>SYSTEM DEMAND</p> <p>1. 0PM SPRINKLER 3440 GPM</p> <p>2. BASED ON THE BASIS 2000 PSI</p>

HYDRAULIC-SYSTEM	HYDRAULIC-SYSTEM
<p>THIS BUILDING IS PROTECTED BY A HYDRAULICALLY DESIGNED AUTOMATIC SPRINKLER SYSTEM</p> <p>LOCATION AREA # 11</p> <p>NO. OF SPRINKLERS 10</p> <p>BASIS OF DESIGN</p> <p>1. IDENTIFY 18 GPM @ 50 FT</p> <p>2. DESIGN AREA OF PROTECTION 1000 SQ. FT.</p> <p>SYSTEM DEMAND</p> <p>1. 0PM SPRINKLER 3440 GPM</p> <p>2. BASED ON THE BASIS 2000 PSI</p>	<p>THIS BUILDING IS PROTECTED BY A HYDRAULICALLY DESIGNED AUTOMATIC SPRINKLER SYSTEM</p> <p>LOCATION AREA # 12</p> <p>NO. OF SPRINKLERS 10</p> <p>BASIS OF DESIGN</p> <p>1. IDENTIFY 18 GPM @ 50 FT</p> <p>2. DESIGN AREA OF PROTECTION 1000 SQ. FT.</p> <p>SYSTEM DEMAND</p> <p>1. 0PM SPRINKLER 3440 GPM</p> <p>2. BASED ON THE BASIS 2000 PSI</p>

HYDRAULIC-SYSTEM	HYDRAULIC-SYSTEM
<p>THIS BUILDING IS PROTECTED BY A HYDRAULICALLY DESIGNED AUTOMATIC SPRINKLER SYSTEM</p> <p>LOCATION AREA # 13</p> <p>NO. OF SPRINKLERS 10</p> <p>BASIS OF DESIGN</p> <p>1. IDENTIFY 18 GPM @ 50 FT</p> <p>2. DESIGN AREA OF PROTECTION 1000 SQ. FT.</p> <p>SYSTEM DEMAND</p> <p>1. 0PM SPRINKLER 3440 GPM</p> <p>2. BASED ON THE BASIS 2000 PSI</p>	<p>THIS BUILDING IS PROTECTED BY A HYDRAULICALLY DESIGNED AUTOMATIC SPRINKLER SYSTEM</p> <p>LOCATION AREA # 14</p> <p>NO. OF SPRINKLERS 10</p> <p>BASIS OF DESIGN</p> <p>1. IDENTIFY 18 GPM @ 50 FT</p> <p>2. DESIGN AREA OF PROTECTION 1000 SQ. FT.</p> <p>SYSTEM DEMAND</p> <p>1. 0PM SPRINKLER 3440 GPM</p> <p>2. BASED ON THE BASIS 2000 PSI</p>

WATER DATA
 STATIC: 54.1 PSI
 RESIDUAL: 31.1 PSI
 ELEV: 7.249 GPM-0"
 ELEV: 1.140 GPM-0"
 DATE: 12/19/2002
 INFORMATION PROVIDED BY:
 PORTLAND WATER DISTRICT

GENERAL FIRE PROTECTION, INC. WILL START AT THE UNDERGROUND ENTRANCE FLANGE PROVIDED BY OTHERS.
 NOTE: THE UNDERGROUND PIPING SHALL BE INSTALLED BY OTHERS. THE INSTALLATION SHALL COMPLY WITH NFPA # 24.



UNDERSTORY
 FINISH FLOOR ELEVATION VARIES 92'-0" TO 99'-0"
 AREA PROTECTED: 1,089 SQ. FT.

VICTAULIC
 MODEL V3802P
 WHITE CONCEALED
 PENDENT

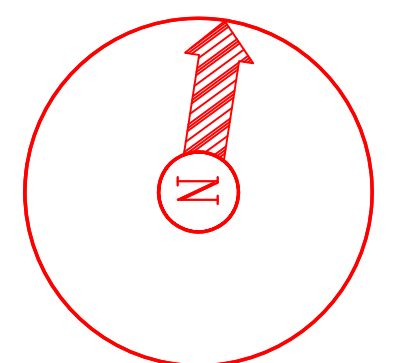
K-FACTOR = 5.6
 SIN # V3802P
 SYMBOL = ●

VICTAULIC MODEL V2742P WHITE CONCEALED PENDENT
 K-FACTOR = 4.9
 SIN # V2742P
 SYMBOL = ●

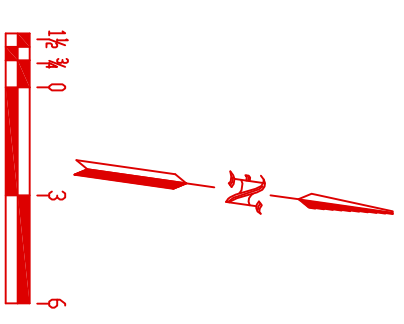
VICTAULIC MODEL V2502P BRASS UPRIGHTS
 K-FACTOR = 4.2
 SIN # V2502P
 SYMBOL = ○

VICTAULIC MODEL V3802P WHITE CONCEALED PENDENT
 K-FACTOR = 5.6
 SIN # V3802P
 SYMBOL = ●

VICTAULIC MODEL V2710P BRASS HORIZONTAL SIDEWALL
 K-FACTOR = 5.6
 SIN # V2710P
 SYMBOL = ▽



DENALI
 FIRE PROTECTION, INC.
 DESIGN INSTALLATION SERVICE
 78 ROLLER RINK RD.
 OXFORD, MAINE 04270
 (207) 539-4226 FAX (207) 539-8544

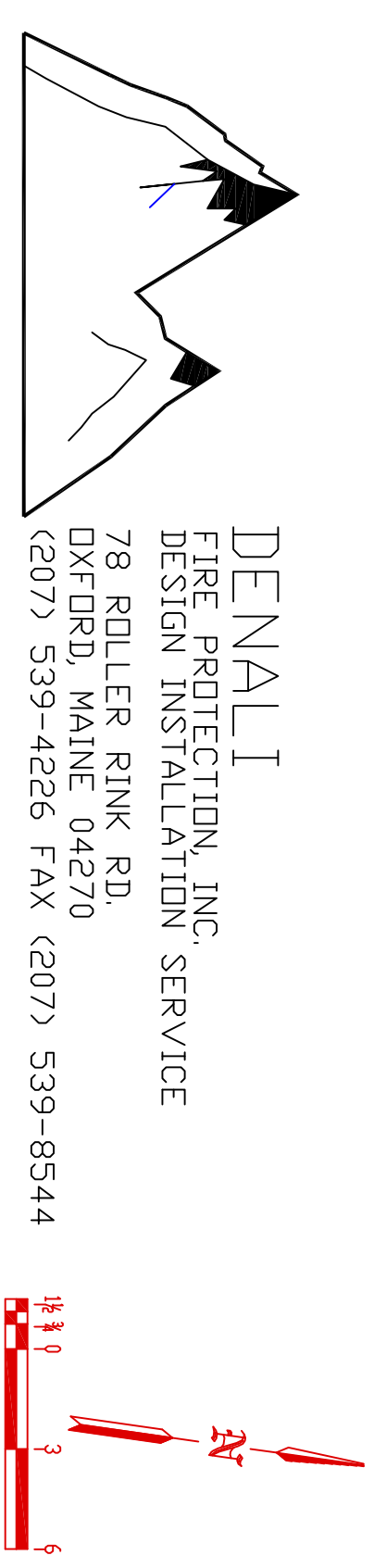
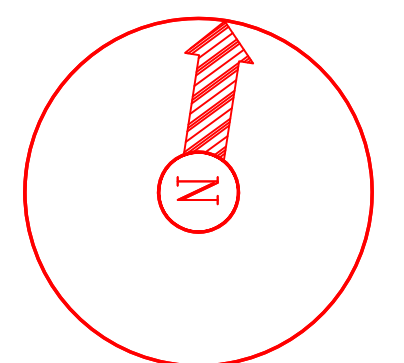


General Notes

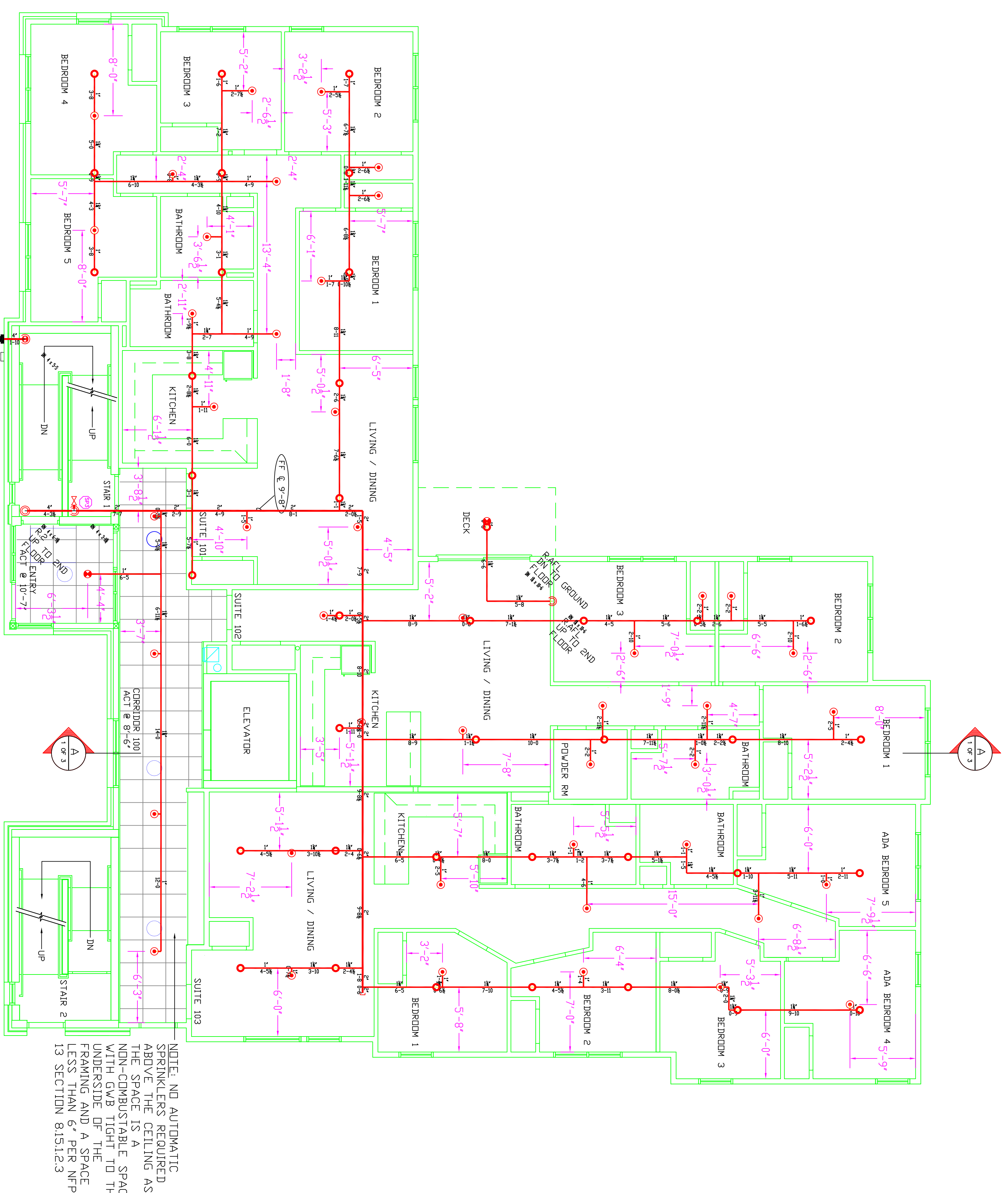
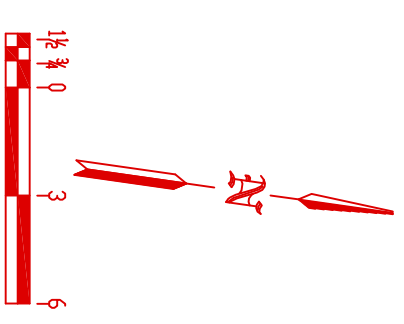
- All Pipe Schedules are to be Field Measured Prior to Fabrication and Installation by Sprinkler Contractor.
- All Dimensions Shown are Center to Center.
- High Temperature Heads are to be Field Located Where Required.
- All Pipes and Hangers are to be Installed per NFPA #13.
- Hangers are to be U.L. Listed and P.M. Approved.

Symbol	Description	Total This Sheet	Number of Sprinklers	Drawing Title
(4.3)	Horizontal Pipe Schedule			FP2 - POOR PLANS
(4.4)	Pipe Above Finished Floor			Contract No. C18-09
(4.5)	Box Above Finished Floor			Drawn By TMB
(4.6)	Box Above Finished Floor			Scale 3/8" = 1'-0"
(4.7)	Ceiling Height			Date 09/16/08
(4.8)	Devices Hanger Location			Approved By SMK/PPB
(4.9)	Rise Up or Down			

Job: CRESCENT STREET APARTMENTS
 25 - 29 CRESCENT STREET
 PORTLAND, ME
 Contractor: DENALI FIRE PROTECTION, INC.
 78 ROLLER RINK RD.
 OXFORD, MAINE 04270



DENALI
 FIRE PROTECTION, INC.
 DESIGN INSTALLATION SERVICE
 78 ROLLER RINK RD.
 OXFORD, MAINE 04270
 (207) 539-4226 FAX (207) 539-8544



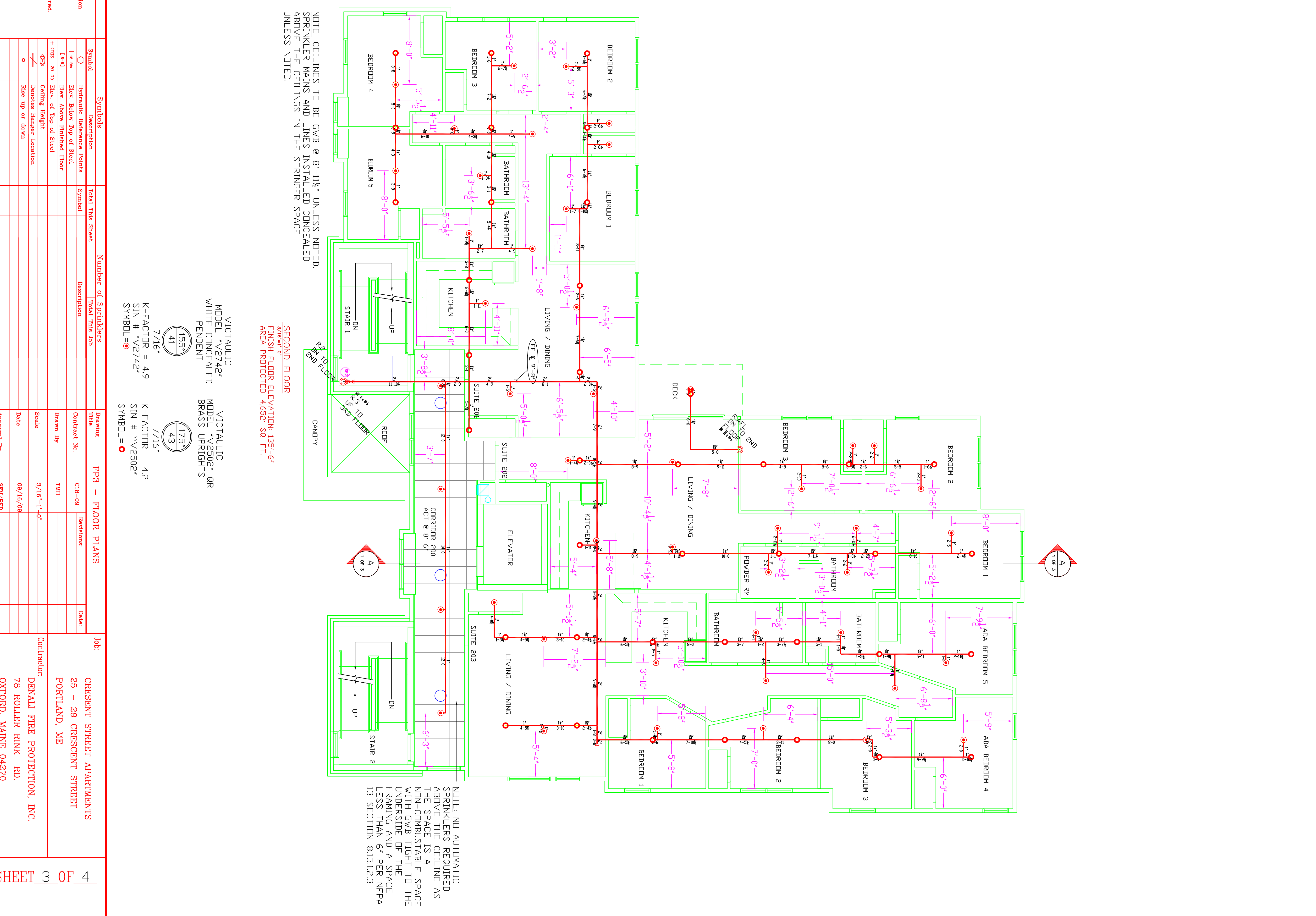
⑫ 4" STORZ FDC
 6" ELECTRIC BELL
 FIRST FLOOR
 FINISH FLOOR ELEVATION: 125'-0"
 AREA PROTECTED: 4,715 SQ. FT.

- VICTAULIC MODEL V2742 WHITE CONCEALED PENDENT
 K-FACTOR = 4.9
 SIN # V2742
 SYMBOL = ●
- VICTAULIC MODEL V2502 BRASS UPRIGHTS
 K-FACTOR = 4.2
 SIN # V2502
 SYMBOL = ○
- VICTAULIC MODEL V3802 WHITE CONCEALED PENDENT
 K-FACTOR = 5.6
 SIN # V3802
 SYMBOL = ●

- General Notes**
- All Pipe Installations are to be Field Measured Prior to Fabrication and Installation by Sprinkler Contractor.
 - All Dimensions Shown are Center to Center.
 - High Temperature Heads are to be Field Located Where Required.
 - All Pipes and Hangers are to be Installed per NFPA 13.
 - Hangers are to be U.L. Listed and P.M. Approved.

Symbol	Description	Total This Sheet	Number of Sprinklers	Drawing Title
(●)	Victaulic White Concealed Sprinkler	41	41	FP3 - FLOOR PLANS
(○)	Victaulic Brass Uprights	1	1	
(●)	Victaulic White Concealed Sprinkler	42	42	
(○)	Victaulic Brass Uprights	1	1	

Contractor	Job
DENALI FIRE PROTECTION, INC. 78 ROLLER RINK RD. OXFORD, MAINE 04270	CRESCENT STREET APARTMENTS 25 - 29 CRESCENT STREET PORTLAND, ME

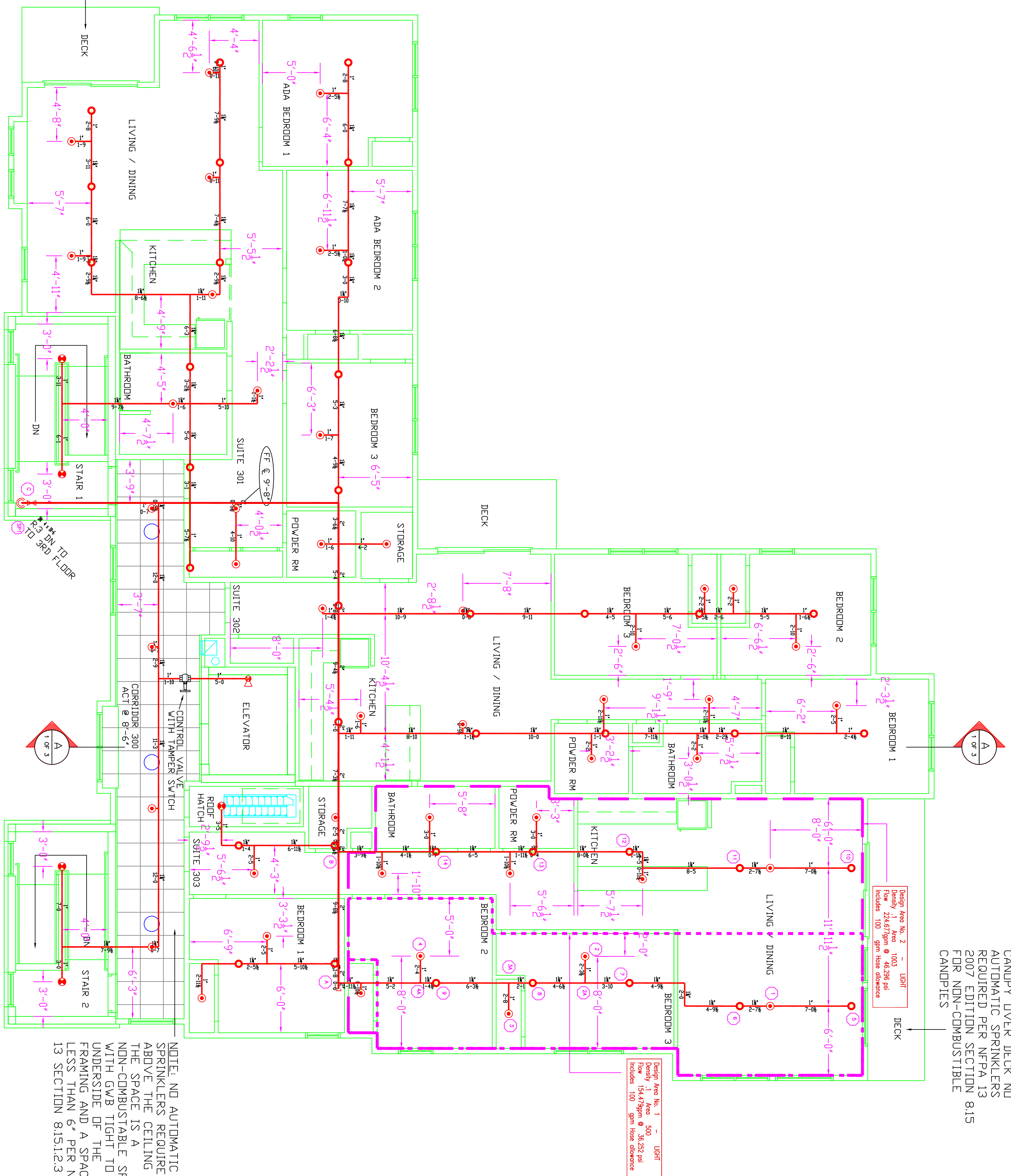


⑫ 4" STORZ FDC
 6" ELECTRIC BELL
 SECOND FLOOR
 FINISH FLOOR ELEVATION: 135'-6"
 AREA PROTECTED: 4,652 SQ. FT.

- VICTAULIC MODEL V2742 WHITE CONCEALED PENDENT
 K-FACTOR = 4.9
 SIN # V2742
 SYMBOL = ●
- VICTAULIC MODEL V2502 BRASS UPRIGHTS
 K-FACTOR = 4.2
 SIN # V2502
 SYMBOL = ○
- VICTAULIC MODEL V3802 WHITE CONCEALED PENDENT
 K-FACTOR = 5.6
 SIN # V3802
 SYMBOL = ●

Contractor	Job
DENALI FIRE PROTECTION, INC. 78 ROLLER RINK RD. OXFORD, MAINE 04270	CRESCENT STREET APARTMENTS 25 - 29 CRESCENT STREET PORTLAND, ME

NOTE: NON-COMBUSTIBLE CAMPY OVER DECK AND AUTOMATIC SPRINKLERS REQUIRED PER NFPA 13 2007 EDITION SECTION 8.15 FOR NON-COMBUSTIBLE CANPIES

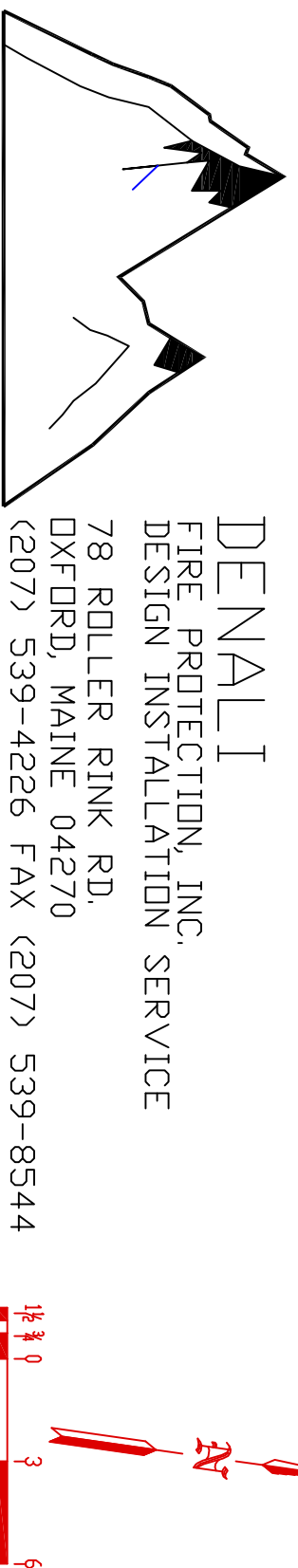
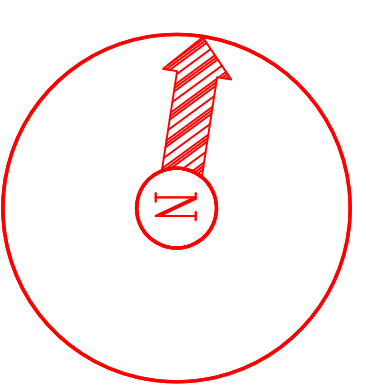


NOTE: CEILING TO BE GYB @ 8'-11 1/4". UNLESS NOTED. SPRINKLER MAINS AND LINES INSTALLED CONCEALED ABOVE THE CEILING IN THE WOOD TRUSS SPACE UNLESS NOTED.

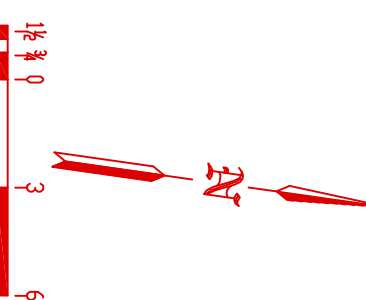
THIRD FLOOR FINISH FLOOR ELEVATION: 146'-0" AREA PROTECTED: 4333 SQ. FT.

NOTE: NO AUTOMATIC SPRINKLERS REQUIRED ABOVE THE CEILING AS THE SPACE IS A NON-COMBUSTIBLE SPACE WITH SWAP OUT THE FRAMING AND A SPACE LESS THAN 6' PER NFPA 13 SECTION 8.15.1.2.3

VICTAULIC MODEL V2742 WHITE CONCEALED PENDENT	VICTAULIC MODEL V2502 BRASS UPRIGHTS	VICTAULIC MODEL V3802 WHITE CONCEALED PENDENT	VICTAULIC MODEL V2710 BRASS HORIZONTAL SIDE WALL
7/16" K-FACTOR = 4.9 SIN # V2742	7/16" K-FACTOR = 4.2 SIN # V2502	1/2" K-FACTOR = 5.6 SIN # V3802	1/2" K-FACTOR = 5.6 SIN # V2710
SYMBOL = ○	SYMBOL = ○	SYMBOL = ○	SYMBOL = ○



DENALI
FIRE PROTECTION, INC.
DESIGN INSTALLATION SERVICE
78 ROLLER RINK RD.
OXFORD, MAINE 04270
(207) 539-4226 FAX (207) 539-8544



General Notes

1. All Pipe Standoffs are to be Field Measured Prior to Fabrication
2. All Dimensions Shown are Center to Center.
3. High Temperature Heads are to be Field Located Where Required.
4. All Pipes and Hangers are to be Installed per NFPA #13.
5. Hangers are to be UL Listed and P&M Approved.

Symbols		Number of Sprinklers	
Description	Symbol	Description	Symbol
Bedrooms	(4 in)	Bedrooms	(4 in)
Living / Dining	(4 in)	Living / Dining	(4 in)
Kitchen	(4 in)	Kitchen	(4 in)
Bathrooms	(4 in)	Bathrooms	(4 in)
Powder Rm	(4 in)	Powder Rm	(4 in)
Stair	(4 in)	Stair	(4 in)
Storage	(4 in)	Storage	(4 in)
Suite	(4 in)	Suite	(4 in)

Contractor	DENALI FIRE PROTECTION, INC.
Job	CRESSBENT STREET APARTMENTS 25 - 29 CRESSBENT STREET PORTLAND, ME
Contract No.	CI8-09
Drawn By	TMB
Scale	3/8" = 1'-0"
Date	09/16/09
Approval By	SMK/PPB