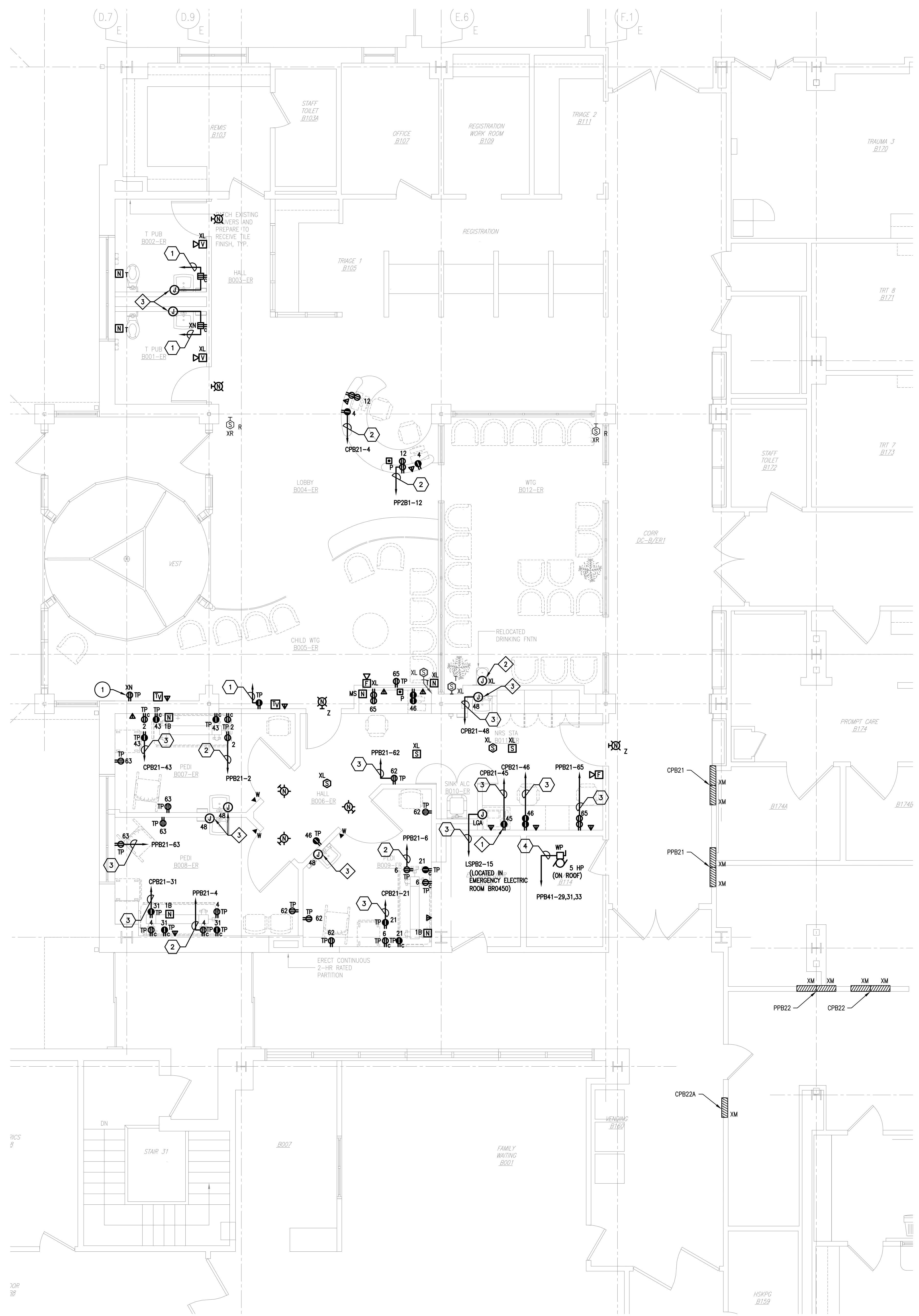


1 POWER AND SIGNAL PLAN — DEMOLITION
1/4" = 1'-0"



2 POWER AND SIGNAL PLAN
1/4" = 1'-0"

- General Notes:
- ALL NURSE CALL DEVICES INDICATED FOR REMOVAL SHALL BE TURNED OVER TO OWNER. NEW NURSE CALL DEVICES SHALL BE OWNED, FURNISHED AND INSTALLED. COORDINATE SIZES AND FINAL LOCATIONS OF NURSE CALL DEVICE BACKBOXES WITH OWNER.
 - COORDINATE REMOVALS AND ADDITIONS OF TERMINAL BOXES WITH DIVISION 15. RE-USE EXISTING CIRCUITS.

DRAWING NOTES:

- REPLACE EXISTING RECEPTACLE WITH HOSPITAL GRADE TAMPER PROOF RECEPTACLE.
- COORDINATE RELOCATION OF PUBLIC TELEPHONES TO VENDING AREA WITH OWNER. PROVIDE BACKBOXES AND CONDUIT TO ABOVE HUNG CEILING FOR TELEPHONE CONNECTIONS. PROVIDE NEW DUPLEX RECEPTACLE TIED INTO HARVEST CORRIDOR NORMAL POWER RECEPTACLE CIRCUIT IN LOCATION DIRECTED BY OWNER.
- EXISTING CEILING MOUNTED ELECTRICAL DEVICES INCLUDING, BUT NOT LIMITED TO, LIGHT FIXTURES, FIRE ALARM DEVICES, PA SYSTEM AND SECURITY EQUIPMENT SHALL BE SUPPORTED OR REMOVED AND RE-INSTALLED IN PLACE TO FACILITATE CEILING WORK NECESSARY FOR THE INSTALLATION AND MODIFICATION OF PIPING AND DUCTWORK. REFER TO ARCHITECTURAL AND MECHANICAL DRAWINGS FOR ACTUAL AREAS INCLUDED IN SCOPE OF WORK.

EQUIPMENT NOTES:

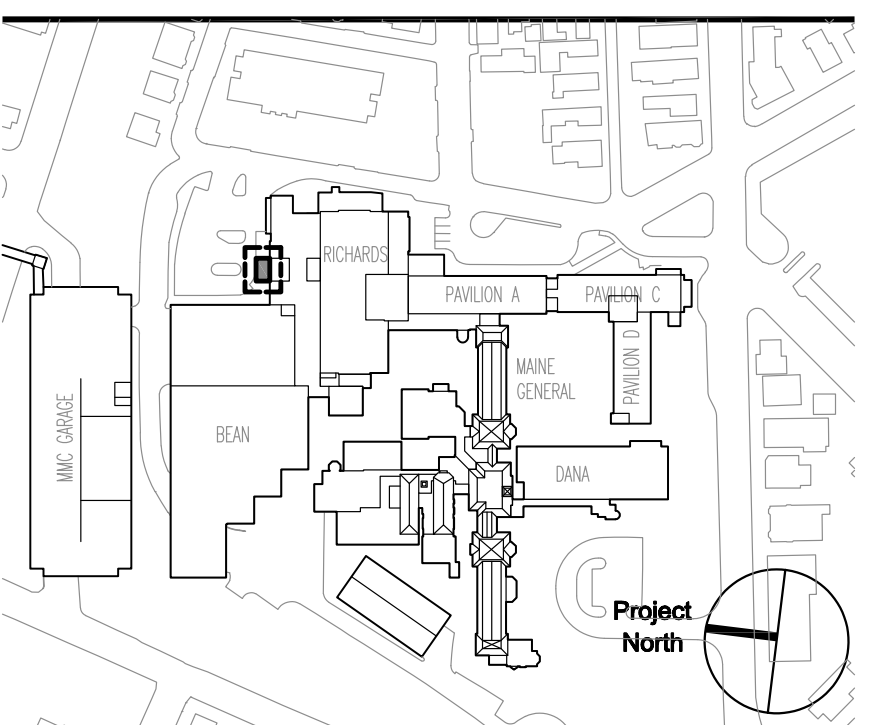
- ◇ CONNECTION FOR MEDICATION DISPENSER.
- ◇ RELOCATED CONNECTION TO WATER COOLER.
- ◇ CONNECTION FOR ELECTRONIC SINK VALVE CONTROL.

BRANCH CIRCUIT NOTES:

- CONNECT TO EXISTING RECEPTACLE CIRCUIT FEEDING THIS AREA.
- HOMERUN TO EXISTING 20/1 CIRCUIT BREAKER IN PANEL INDICATED. MAKE SPARE DUE TO RENOVATIONS.
- HOMERUN TO EXISTING 20/1 CIRCUIT BREAKER IN PANEL INDICATED.
- (3) #10AL1#100 IN 3/4" CONDUIT TO NEW 25A/3P CIRCUIT BREAKER IN PANEL INDICATED. CIRCUIT SHALL BE RUN VIA NEW NEMA #0 STARTER LOCATED IN ELECTRIC ROOM BR0450. ADJACENT TO PANEL.

MARK	ISSUE DATE	DESCRIPTION

Issue Log



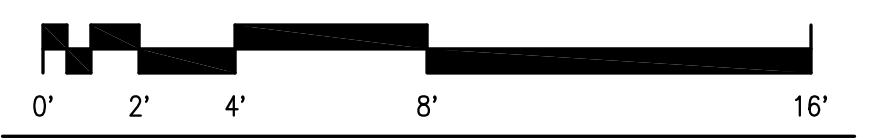
Key Plan

TRO
ARCHITECTURAL
PLANNING
ENGINEERING
INTERIOR DESIGN

The Ritchie Organization
80 Bridge Street
Newton, MA 02459-1154
617-999-9400

Maine Medical Center
ED Pediatric Exam Renovation
Portland, Maine

Drawing Title
**ELECTRICAL
BASEMENT
POWER AND SIGNAL PLANS**



Commission No.	4684	Date Issued	JUNE 22, 2004
Scale	1/4" = 1'-0"	Sheet Number	E30B
Drawn By	K.G.	Approved By	D.S.
Filename	4684E30B		