

**General Notes:**

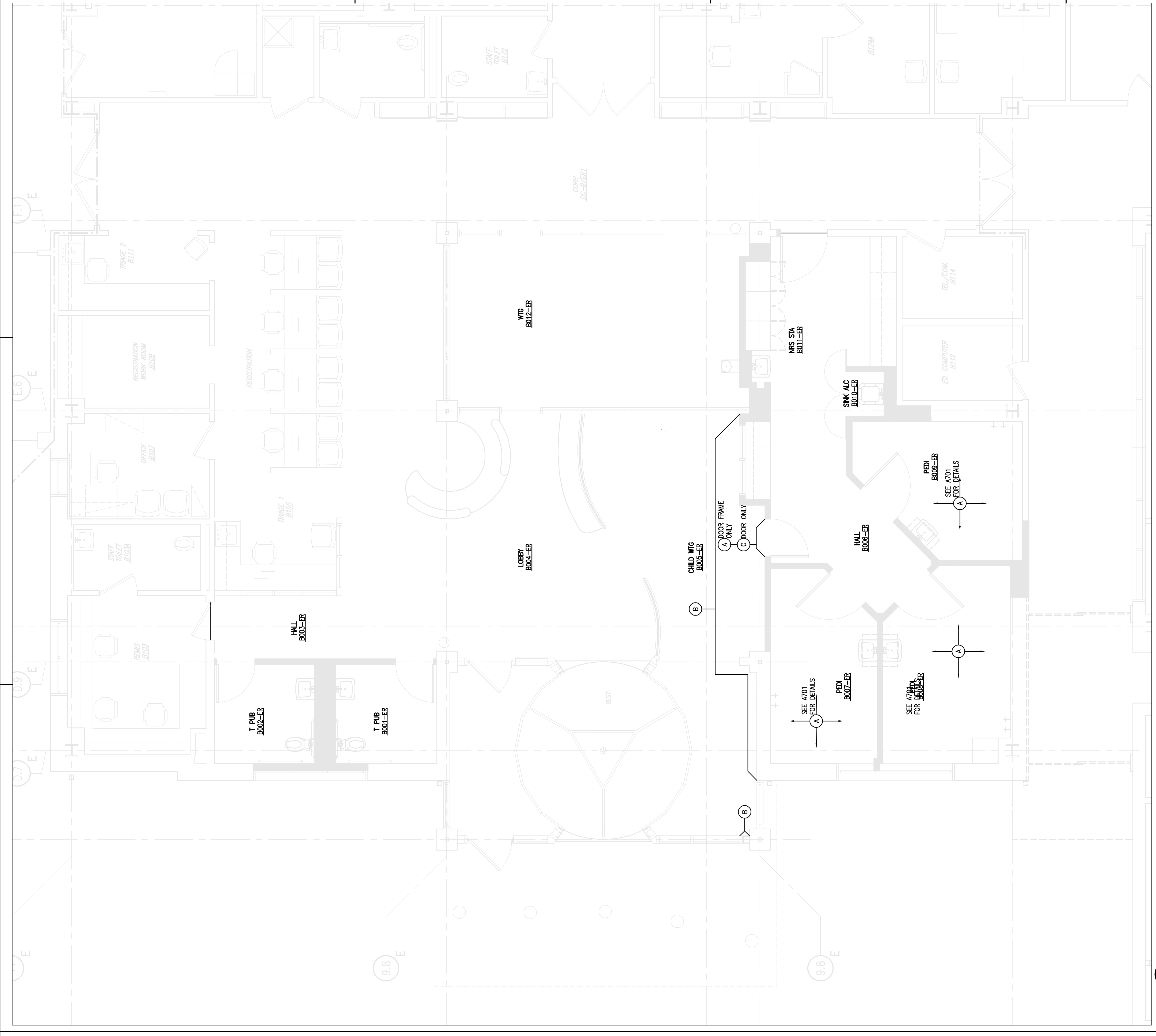
1. THESE DRAWINGS ARE FOR DIAGRAMMATIC PURPOSES AND ILLUSTRATE THE GENERAL CONCEPTS OF THE DESIGN. THE CONTRACTOR SHALL BE RESPONSIBLE FOR OBTAINING ALL NECESSARY PERMITS AND APPROVALS FROM THE APPLICABLE AGENCIES.
2. REFER TO THE ROOM FINISH SCHEDULE AND ARCHITECTURAL SPECIFICATIONS FOR INFORMATION REGARDING THE SPECIFIED FINISH.
3. IT IS THE RESPONSIBILITY OF EACH TRADE TO SUBMIT TO THE ARCHITECT ALL MATERIAL SAMPLES, COLORS, AND FINISHES SPECIFIED FOR INSTALLATION AND OBTAIN APPROVAL FROM THE ARCHITECT.

**Flooring Symbol Key:**

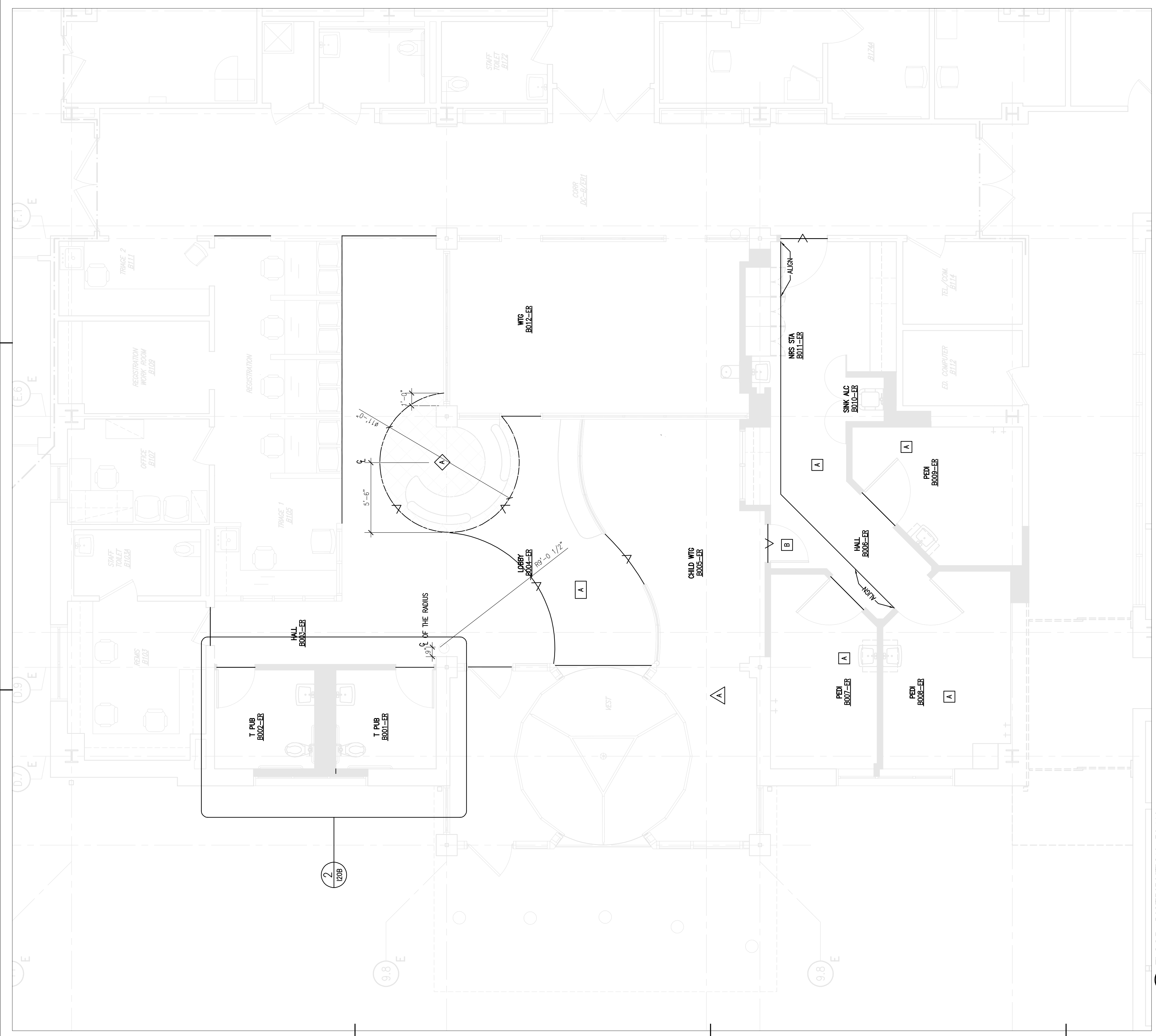
- REFER TO FINISH DISTRIBUTION INDEX SHEET FOR MATERIAL CODE DESIGNATIONS.
- CARPET DISTRB. SYMB.
  - RESILIENT FLOORING DISTRB. SYMB.
  - MATERIAL CODE
  - RESILIENT SHEET FLOORING DISTRB. SYMB.
  - MATERIAL CODE
  - WOOD FLOOR DISTRB. SYMB.
  - MATERIAL CODE
  - PORCELAIN TILE DISTRB. SYMB.
  - MATERIAL CODE
  - BLANK OFF MAT DISTRB. SYMB.
  - MATERIAL CODE
  - RECESSED PAN SYMBOL

**Wall Finish Symbol Key:**

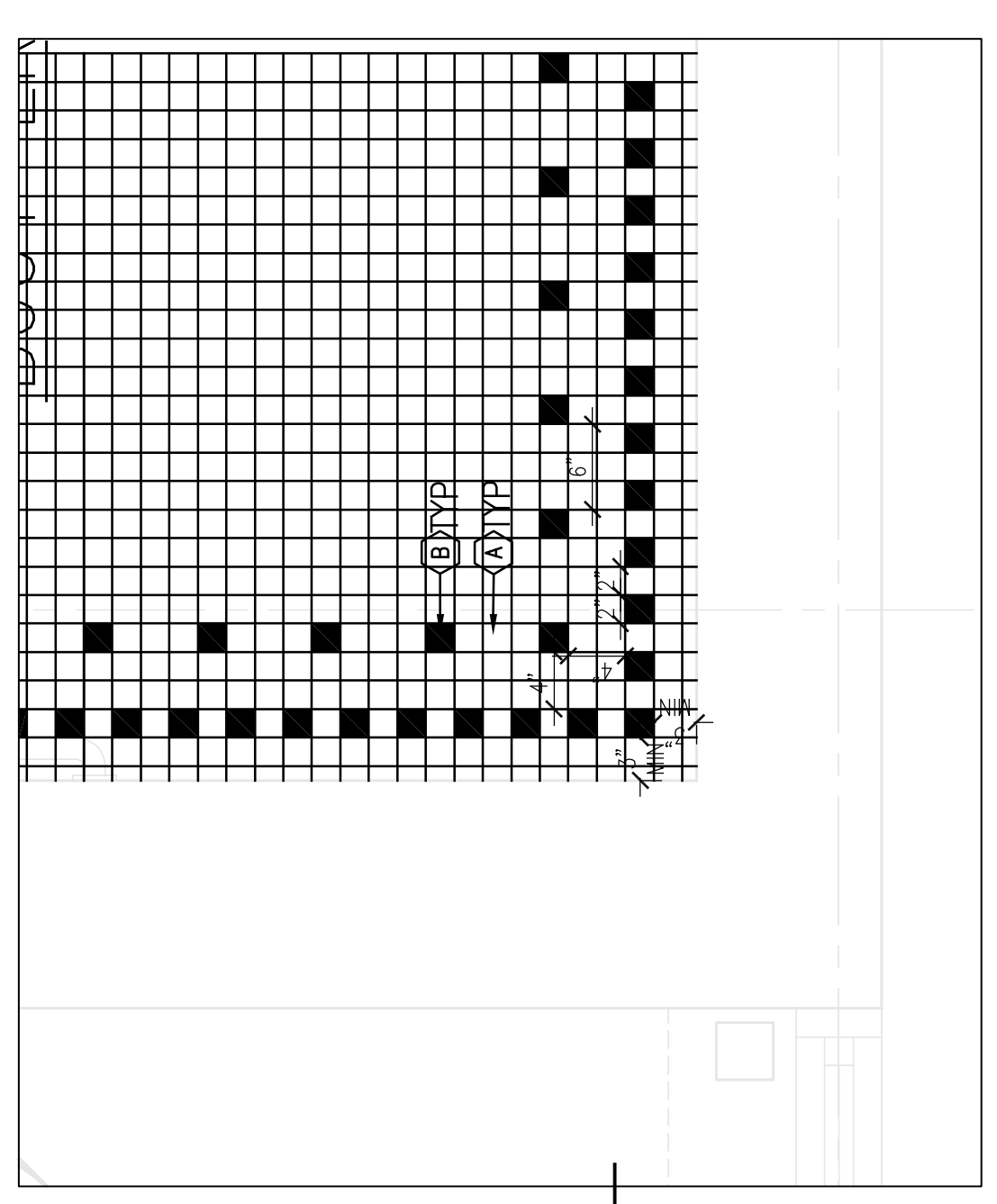
- REFER TO FINISH DISTRIBUTION INDEX SHEET FOR MATERIAL CODE DESIGNATIONS.
- PAINT DISTRB. SYMBOL
  - PAINT COLOR CODE
  - DISTRIBUTION SYMBOL
  - MATERIAL CODE
  - COLOR/MAT
  - MATERIAL CODE
  - GYPSUM WALLCOVERING DISTRB. SYMBOL
  - MATERIAL CODE
  - GYPSUM WALLCOVERING DISTRB. SYMBOL
  - MATERIAL CODE
  - GYPSUM WALLCOVERING DISTRB. SYMBOL
  - MATERIAL CODE
  - GYPSUM WALLCOVERING DISTRB. SYMBOL
  - MATERIAL CODE
  - GYPSUM WALLCOVERING DISTRB. SYMBOL
  - MATERIAL CODE



**2 WALL DISTRIBUTION PLAN**  
SCALE: 1/4" = 1'-0"

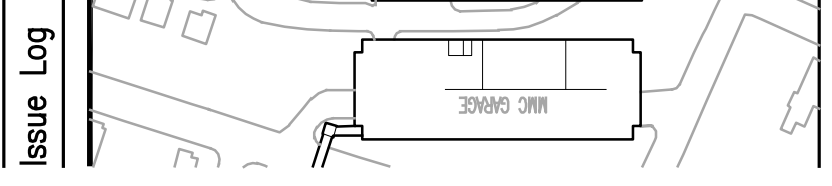


**1 FLOOR DISTRIBUTION PLAN**  
SCALE: 1/4" = 1'-0"



**B001-ER, B002-ER T-PUB**  
**2 FLOOR PATTERN**  
SCALE: 1" = 1'-0"

MARK	ISSUE DATE	DESCRIPTION



**Maine Medical Center**  
FD Pediatric Exam Renovation  
Portland, Maine

**FLOOR AND WALL DISTRIBUTION PLANS**

Drawing Title: **FLOOR AND WALL DISTRIBUTION PLANS**

Scale: 1/4" = 1'-0"

0' 2' 4' 8' 16'

Contracted No.	4567	Date Issued	JUNE 22, 2001
Scale	AS NOTED	Sheet Number	
Drawn By	BC		
Approved By			
Revised	4567008		

**120B**