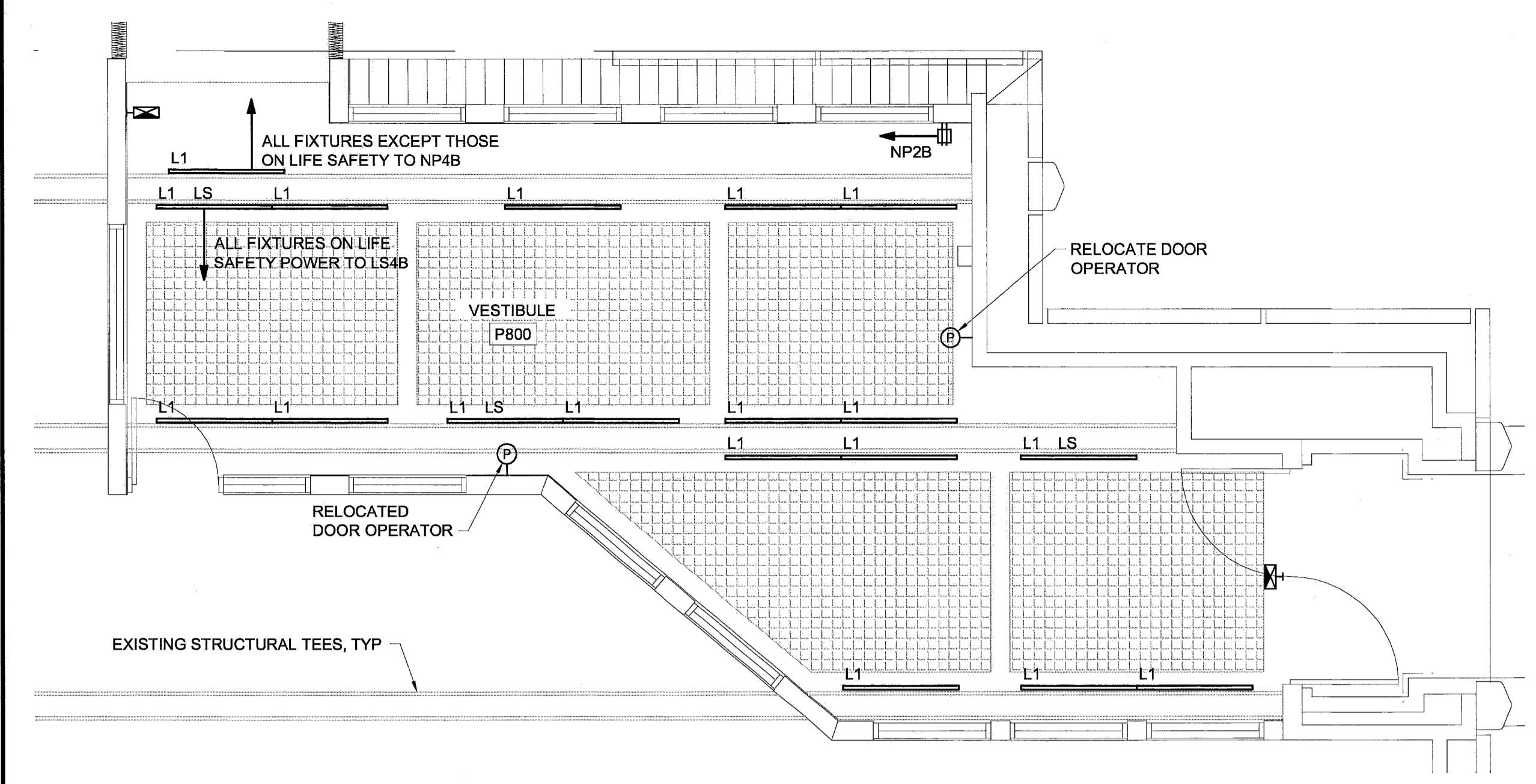
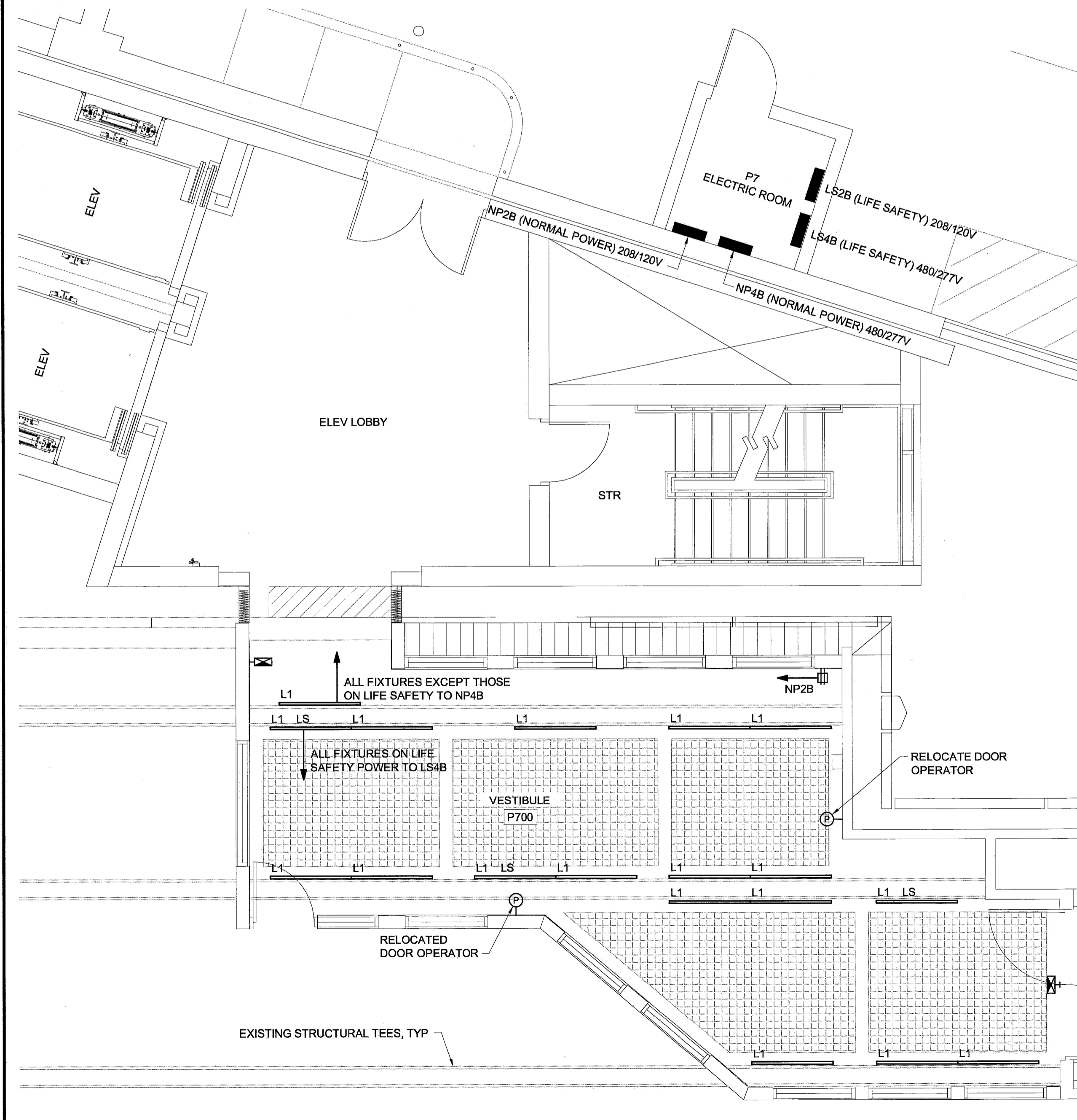


- FURNISH ALL LABOR, MATERIAL, EQUIPMENT, AND SUPPLIES AND PERFORM ALL OPERATIONS NECESSARY TO PROVIDE A COMPLETE AND OPERABLE ELECTRICAL SYSTEM AS INDICATED ON THE DRAWINGS, SPECIFIED, AND REQUIRED BY CODE OR BUILDING STANDARDS.
- COMPLIANCE: ALL WORK SHALL BE PERFORMED IN COMPLETE COMPLIANCE WITH THE NATIONAL ELECTRICAL CODE, ALL STATE OR LOCAL CODES, AND AUTHORITIES HAVING JURISDICTION.
- THE CONTRACTOR SHALL PAY ALL FEES FOR PERMITS AND OBTAIN ALL APPROVALS FROM AUTHORITIES HAVING JURISDICTION.
- THE CONTRACTOR SHALL GUARANTEE ALL MATERIALS AND LABOR FOR ONE YEAR FROM THE DATE OF FINAL ACCEPTANCE BY THE OWNER UNLESS NOTED OTHERWISE.
- PROVIDE SIX COPIES OF SHOP DRAWINGS OF SUPPLIED ELECTRICAL EQUIPMENT FOR APPROVAL INCLUDING LIGHT FIXTURES, FIRE ALARM COMPONENTS, AND WIRING DEVICES.
- PRIOR TO SUBMISSION FOR REVIEW OF ANY ITEM OF EQUIPMENT, DETERMINE WHETHER OR NOT IT WILL FIT IN THE SPACE PROVIDED. ANY CHANGES IN THE SIZE OR LOCATION OF THE MATERIAL SUPPLIED WHICH MAY BE NECESSARY IN ORDER TO MEET FIELD CONDITIONS OR IN ORDER TO AVOID CONFLICTS WITH OTHER DIVISIONS SHALL BE BROUGHT TO THE IMMEDIATE ATTENTION OF THE ENGINEER AND APPROVAL RECEIVED BEFORE SUCH ALTERATIONS ARE MADE.
- PROVIDE "AS BUILT" RECORD DRAWING SET (RED LINE).
- GENERALLY, ALL WORK IN FINISHED AREAS SHALL BE CONCEALED. CONSULT OWNER FOR DIRECTION WHERE WORK CANNOT BE CONCEALED.
- BRANCH CIRCUITS SHALL BE INSTALLED AS FOLLOWS:
  - CONCEALED ABOVE CEILING OR IN STUD WALL: SINGLE CONDUCTORS IN EMT. TYPE MC CABLE (METAL CLAD) SHALL BE PERMITTED FOR 15 THROUGH 50 AMP CIRCUITS.
  - FINAL CONNECTIONS TO MOTORS, TRANSFORMERS AND OTHER VIBRATING EQUIPMENT: OUTDOORS OR WET LOCATIONS: LIQUIDTIGHT FLEXIBLE METAL CONDUIT, INDOORS: FLEXIBLE METAL CONDUIT
- ALL CONDUCTORS SHALL BE COPPER WITH INSULATION RATED FOR 600V AND NOT LESS THAN 90 DEGREES C.
- BRANCH CIRCUIT CONDUCTORS SHALL NOT BE LESS THAN #12 AWG AND SHALL NOT EXCEED 100 FEET FROM PANELBOARD TO FURthest OUTLET. FOR HOMERUNS THAT DO NOT EXCEED 150 FEET, #10 AWG IS PERMITTED. FOR HOMERUNS GREATER THAN 150 FEET, CONDUCTOR SHALL NOT BE LESS THAN #8 AWG.
- COLOR CODE THE CONDUCTORS OF EACH PHASE AS FOLLOWS:  
480/277 VOLT: A-BROWN, B-ORANGE, C-YELLOW  
120/208 VOLT: A-BLACK, B-RED, C-BLUE  
NEUTRAL CONDUCTORS:  
277 VOLT-NATURAL GRAY  
120 VOLT-WHITE  
GROUND WIRES SHALL BE BARE COPPER OR CODED GREEN IF INSULATED.
- CIRCUITING SHALL BE AS SHOWN ON THE DRAWINGS AND IN ACCORDANCE WITH APPLICABLE CODES AND STANDARD PRACTICE.
- COMBINING OF CIRCUITS WITHIN A SINGLE RACEWAY IS PERMITTED, WITH A MAXIMUM OF EIGHT CURRENT CARRYING CONDUCTORS PER HOMERUN.
- ALL CUTTING AND PATCHING REQUIRED FOR INSTALLING THE ELECTRICAL WORK SHALL BE FURNISHED AND INSTALLED BY THE CONTRACTOR. ALL CUTTING SHALL BE PATCHED AND FINISHED TO MATCH SURROUNDING AREA, SATISFACTORY TO OWNER.
- PENETRATIONS OF ABOVE GRADE FLOOR SLABS, FIRE PENETRATIONS AND FIRE WALLS SHALL BE FIRE STOPPED BY SEALING WITH MATERIAL APPROVED FOR THE APPLICATION.
- PROVIDE SEALING FITTINGS TO PREVENT PASSAGE OF WATER VAPOR WHERE CONDUITS PASS FROM WARM TO COLD LOCATIONS, SUCH AS AIR CONDITIONED SPACES OR SIMILAR SPACES. IN CONCEALED WORK, EACH FITTING SHALL BE INSTALLED IN A FLUSH STEEL BOX WITH A BLANK COVER PLATE HAVING THE SAME FINISH AS THAT OF OTHER ELECTRICAL PLATES.
- FURNISH AND INSTALL ALL SUPPORT HANGERS AND MISC. METALS SUCH AS GALVANIZED IRON PIPE STANCHIONS, RACKS, FITTINGS, ETC. REQUIRED FOR PROPER INSTALLATION OF WORK. ALL MISC. RACKS AND FITTINGS SHALL BE GALVANIZED AND SHALL EITHER BE KINDORF CHANNEL, POWER STRUT OR UNISTRUT, UNLESS OTHERWISE SPECIFIED.
- MINIMUM REQUIREMENT FOR GROUNDING SYSTEM SHALL BE GOVERNED BY THE LATEST EDITION OF THE NEC. ALL GROUNDS, BONDING, ETC. SHALL MEET THESE REQUIREMENTS EXCEPT WHERE MORE STRINGENT REQUIREMENTS ARE SPECIFIED HEREIN. FURNISH AND INSTALL ANY AND ALL ITEMS NECESSARY TO MEET THESE REQUIREMENTS.
- EXCEPT WHERE SPECIFICALLY INDICATED, ALL EXPOSED NON-CURRENT CARRYING METALLIC PARTS OF ELECTRICAL EQUIPMENT, METALLIC RACEWAY SYSTEMS, GROUND BUS, METALLIC CABLE ARMOR AND NEUTRAL CONDUCTOR OF THE WIRING SYSTEM SHALL BE GROUNDED.
- ALL RECEPTACLES SHALL BE GROUNDED VIA A COPPER GROUNDING CONDUCTOR THAT SHALL BE RUN WITH POWER WIRES. A SEPARATE GROUNDING CONDUCTOR SHALL BE RUN IN EVERY FEEDER AND BRANCH CIRCUIT CONDUIT.
- ALL DEVICES SHALL BE SPECIFICATION GRADE AND OF ADEQUATE SIZE AND TYPE AS REQUIRED FOR THE PARTICULAR LOCATION AND SERVICE INTENDED. DEVICES SHALL NOT BE RATED LESS THAN 20 AMPS. ALL DEVICES SHALL HAVE WHITE FINISHES UNLESS NOTED OTHERWISE. DEVICE PLATES SHALL BE WHITE NYLON.
- EXISTING CONDITIONS NOT SHOWN. REMOVE EXISTING LIGHTING AND ASSOCIATED CONDUIT, WIRING AND BOXES AS REQUIRED TO CREATE INDICATED CONDITIONS.
- FURNISH AND INSTALL PULL AND JUNCTION BOXES WHERE SHOWN ON DRAWINGS AND ANY ADDITIONAL BOXES AS MAY BE REQUIRED TO FACILITATE PULLING WIRE AND CABLE OR TO PREVENT DAMAGE TO INSULATION.
- CONDUCTORS SHALL BE CONTINUOUS WITHOUT JOINTS OR SPLICES ON RUNS BETWEEN OUTLET BOXES. ALL SPLICES SHALL BE MADE AT BOXES ONLY.
- LABEL EACH RECEPTACLE ON THE INSIDE OF EACH FACEPLATE WITH PANEL AND CIRCUIT NUMBER DESIGNATIONS.
- PROVIDE THE NECESSARY SOURCE OF POWER, METERS, INSTRUMENTS, TEMPORARY WIRING AND LABOR, AND PERFORM TESTS AND ADJUSTMENTS OF EQUIPMENT AND WIRING INSTALLED OR CONNECTED UNDER THIS SPECIFICATION TO DETERMINE PROPER PHASING, POLARITY, FREEDOM FROM GROUNDS, AND OPERATION OF EQUIPMENT.



D3 VESTIBULE P800 ELECTRICAL PLAN

1/4"=1'-0"



A3 VESTIBULE P700 ELECTRICAL PLAN

1/4"=1'-0"

LUMINAIRE SCHEDULE							
TYPE	DESCRIPTION	MFR	CATALOG SERIES NUMBER SEE NOTE 1	MOUNTING	VOLTS	LAMP TYPE	KEY NOTES
L1	LED AIMABLE STRIP	INSIGHT	TC6-50K-W-CVS-***	SEE NOTE 2	277	6W/FT LED ARRAY	2,4,5
EXT	LED EXIT SIGN	DUAL LITE	CVD-RA-W	SEE NOTE 3	277	LED	3
<b>NOTES</b>							
1	NOTE THAT THESE NUMBERS ARE NOT COMPLETE CATALOG #S. PROVIDE ALL REQUIREMENTS ON SCHEDULE, NOTES, SPECS, AND DRAWINGS COMBINED.						
2	MOUNT TO SIDE OF CONCRETE TEE SUCH THAT BOTTOM OF FIXTURE IS FLUSH WITH CEILING.						
3	PROVIDE WALL, CEILING, OR PENDANT MOUNTING AS INDICATED ON PLANS. PROVIDE NUMBER OF FACES AND ARROWS AS INDICATED.						
4	PROVIDE ACCESSORIES, DRIVERS, MOUNTING EQUIPMENT, ETC. REQUIRED FOR COMPLETE OPERABLE INSTALLATION IN LENGTHS SHOWN ON PLAN.						
5	COLOR TO BE SELECTED BY ARCHITECT FROM MANUFACTURER'S STANDARD.						

D7 LUMINAIRE SCHEDULE

- EXIT SIGN, CONNECT TO EXISTING LIFE SAFETY BRANCH CIRCUIT SERVING AREA - VERIFY EXISTING CIRCUIT HAS ADEQUATE CAPACITY
- EXISTING PANELBOARD
- HOMERUN TO PANEL, (2)#12+(1)#12G, PROVIDE SQUARE D 20A, 1P CIRCUIT BREAKER
- LIGHT FIXTURE, "LS" INDICATES FIXTURE CONNECTED TO LIFE SAFETY BRANCH
- GFCI 20A RECEPTACLE, MOUNT 18" ABOVE FINISHED FLOOR

A1 SPECIFICATION

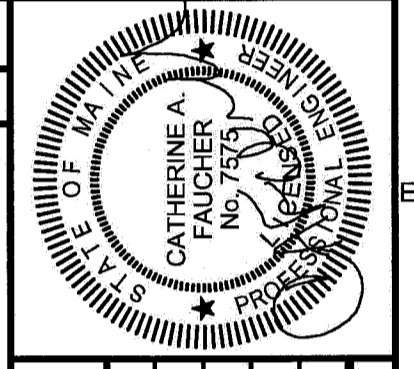
NO SCALE

A9 LEGEND

NO SCALE

160 Veranda Street  
Portland, Maine 04103  
T: 207.221.2260  
F: 207.221.2266  
Web: www.allied-eng.com

**Allied Engineering**  
Structural Mechanical Electrical Commissioning



REVISIONS		NUMBER	DATE	BY	DESCRIPTION

**ELECTRICAL PLANS**

GILMAN STREET GARAGE VESTIBULES  
MAINE MEDICAL CENTER  
PORTLAND, MAINE

© COPYRIGHT 2011 ALLIED ENGINEERS, INC.

**E-100**

N:\Projects\2011\11041 - MMC Gilman Street Garage Vestibule\00 Drawing Files\11041\_E.dwg Aug 04, 2011 - 12:22pm