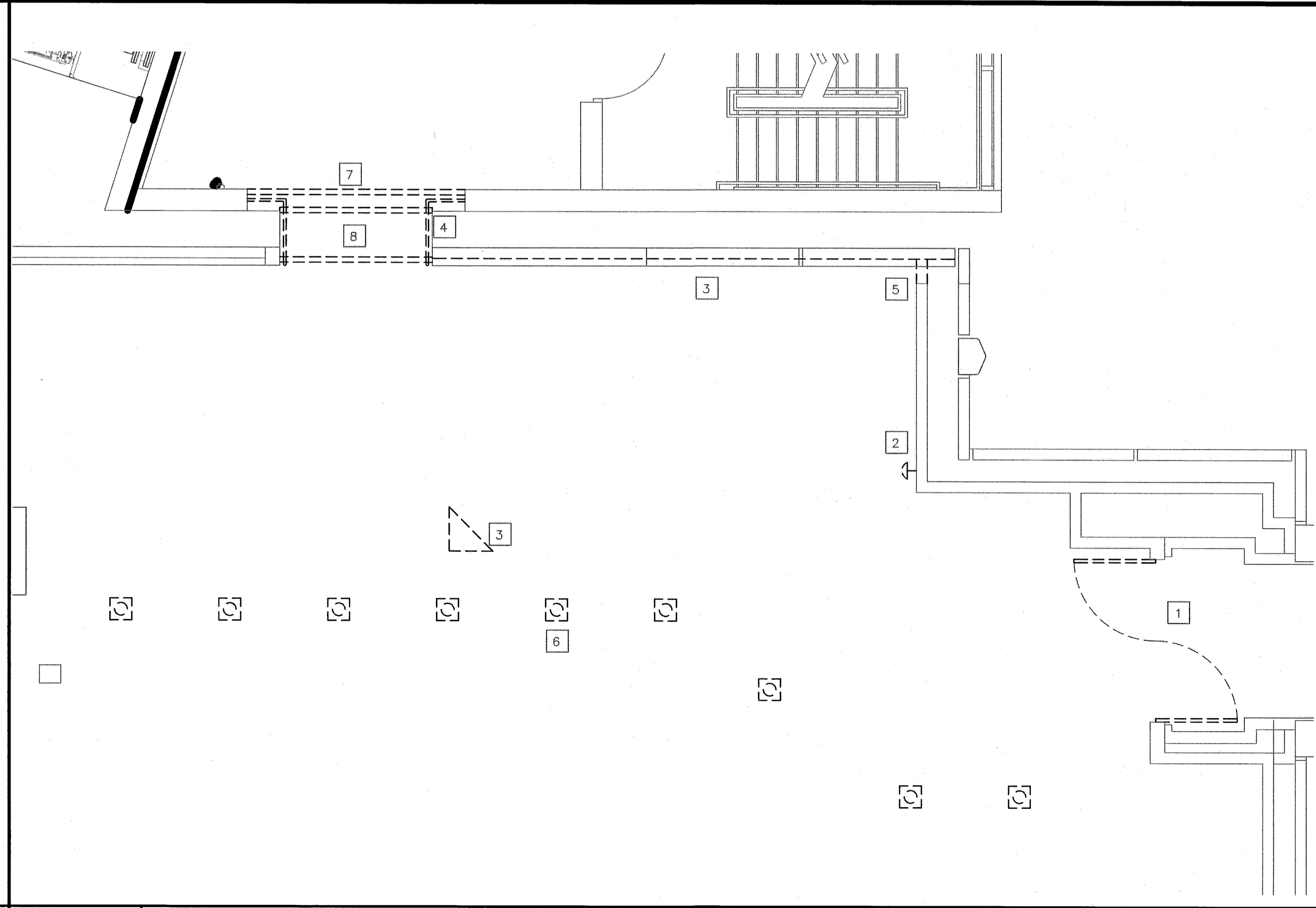
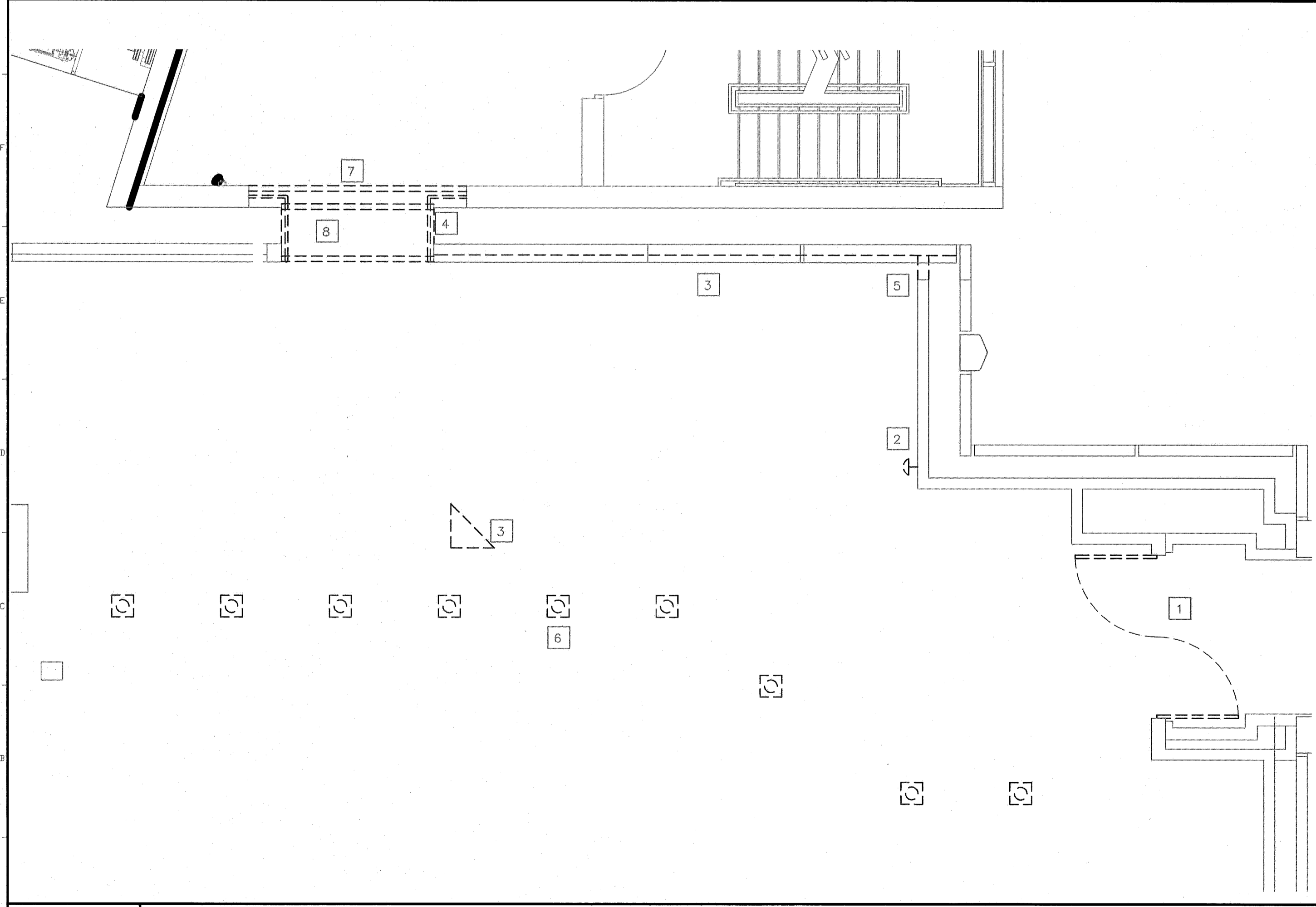


E1 P8 FLOOR PLAN
1/4" = 1'-0"

E7 P7 FLOOR PLAN
1/4" = 1'-0"



A1 P8 REMOVALS PLAN
1/4" = 1'-0"

A7 P7 REMOVALS PLAN
1/4" = 1'-0"

- GENERAL NOTES:**
- DO NOT SCALE DRAWINGS
 - FIELD VERIFY ALL DIMENSIONS PRIOR TO PROCEEDING WITH WORK. IF DISCREPANCIES ARE FOUND, NOTIFY ARCHITECT IN WRITING FOR CLARIFICATION BEFORE PROCEEDING WITH WORK.
 - PATCH HOLES AND CRACKS IN EXISTING WALLS TO RECEIVE NEW PAINT.
 - PROVIDE FIRESTOPPING AT ALL MECHANICAL, ELECTRICAL AND PLUMBING PENETRATIONS IN FIRE-RATED PARTITIONS AND FLOOR/CEILING ASSEMBLIES.
 - MAINTAIN A CONSISTENT LEVEL SURFACE AT TOPS OF NEW CONCRETE KNEE WALLS.

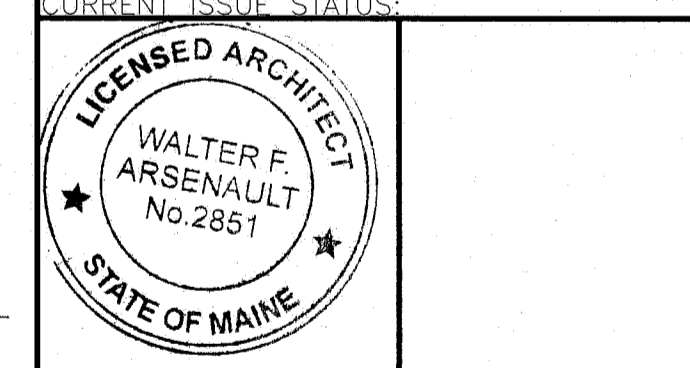
- PLAN NOTES:**
- INSTALL RETROFITTED DOOR LEAVES
 - RELOCATED DOOR OPERATOR
 - NOT USED
 - RELOCATED BOLLARD, TYP
 - WALL MOUNTED FIRE EXTINGUISHER CABINET

- REMOVALS NOTES:**
- ALL BUILDING STRUCTURAL ELEMENTS SHALL REMAIN.
 - PROTECT ALL EXISTING MATERIALS AND FINISHES. ANY MATERIALS OR FINISHES DISTURBED OR DAMAGED DURING DEMOLITION AND NEW WORK SHALL BE REPAIRED OR REPLACED AND FINISHED TO MATCH ADJACENT CONSTRUCTION CONTINUOUSLY TO NEAREST CORNER.
 - DURING DEMOLITION AND NEW WORK, WHERE EXISTING CONDITIONS ARE FOUND TO BE DEFECTIVE, NOTIFY OWNER AND ARCHITECT AND PROVIDE CHANGE PROPOSAL FOR CORRECTION OF THESE CONDITIONS.

- REMOVALS KEY NOTES:**
- REMOVE EXISTING DOOR LEAVES PROTECT & STORE FOR RETROFIT
 - REMOVE AND RELOCATE EXISTING DOOR OPERATOR
 - REMOVE EXISTING SIGN
 - REMOVE METAL GUARD RAIL
 - REMOVE METAL FILLER PANEL
 - REMOVE AND RE-LOCATE BOLLARD, TYP
 - REMOVE, SHORTEN AND RE-INSTALL EXISTING SIGN
 - REMOVE EXPANSION JOINT ASSEMBLY AND METAL PLATE AS PART OF ADD ALTERNATE #1

REV.	DESCRIPTION

ISSUED FOR CONSTRUCTION
08.03.2011



DESIGN GROUP COLLABORATIVE
ARCHITECTURE
DESIGN + PLANNING
22 FREE STREET
PORTLAND, MAINE 04101
(207) 699-3300

MAINE MEDICAL CENTER
GILMAN STREET GARAGE
VESTIBULES
PORTLAND, MAINE

REMOVALS PLANS AND FLOOR PLANS

SHEET TITLE:	08.03.2011	GRAPHIC SCALE:	0" = 1'
DATE:	1/4" = 1'-0"	SCALE:	
PROJECT NO.:	112001	SHEET NO.:	
DRAWN BY:	WFA		
A/E OF RECORD:	WFA		

A 101