

PERKINS + WILL
 225 Franklin Street, Suite 1100
 Boston, MA 02110
 617 452 2200
 www.perkinswill.com

CLIENT
Maine Medical Center
 22 Bramhall Street
 Portland, ME 04102

CONSULTANTS

ARCHITECT/ENGINEER/ARTIST
 Sabago Technics Inc.
 35 John Pierce Road, Suite 1A
 South Portland, ME 04086

STRUCTURAL/MECHANICAL/ELECTRICAL/PLUMBING CONSULTANT
 Slagden Company & Major Inc.
 41 Seaman Street, Building 1, Suite 100
 Waterville, ME 05671

MECHANICAL/ELECTRICAL/PLUMBING CONSULTANT
 AEF Group LLC
 10 Buxton Street, 2nd Floor, Portland, ME 04111

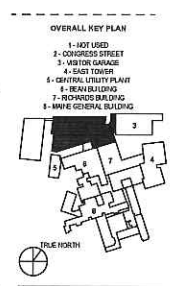
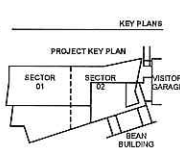
CONSTRUCTION MANAGEMENT
 TURNER CONSTRUCTION
 2 Sequest Lane, Suite 200, Portland, ME 04103

CONSTRUCTION CONSULTANT
 YDA (Plan Design & Assistance)
 101 Denner Street, 4th Floor, Portland, ME 04103

CONTRACTOR
 D.S. Jones International
 1000 Main Street, Suite 200, Portland, ME 04101

VEHICLE/STATIONARY PLUMBING
 Michell Plumbing
 630 Denner Road, Suite 340, Waterville, ME 05682

PROJECT TITLE
Congress Street Building
 22 Bramhall Street
 Portland ME 04102



ISSUED FOR BID
 JULY 12, 2019

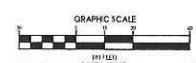
NO.	ISSUE	DATE
1	Job Number	152185 000
2	Drawn	SMJ
3	Checked	WFC
4	Approved	CLC

TITLE
OVERALL SITE PLAN, CONGRESS STREET EXPANSION

SHEET NUMBER
C05-01

BAH/P+UD
 7/23/19

* Plans not stamped by a ME P.E.



* Striping Plan Incomplete/
 many elements wrong

Would be much easier
 w/ 1" = 20' plans (not 1" = 10')

* Ramp design not ADA-compliant / Provide spot grader for all ramp designs

* Need details for
 sidewalks, walks, curbs, ramps, etc.

* Sign orientations wrong

Copyright © Perkins + Will



Two ramps /
Not ADA

Show / Provide
Crosswalk

ADA -
Compliant??

WEMOUTH STREET

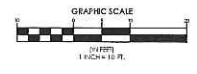
CONGRESS STREET

5' tip downs?

VISITOR GARAGE

Incomplete striping / wrong striping
- ~~blacked out~~ parking

* Sign orientations wrong

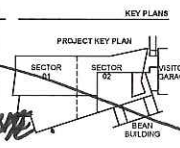


**PERKINS
+ WILL**
225 Franklin Street, Suite 1100
Portland, ME 04101
Tel: 603.433.8300
Fax: 603.433.8301
www.perkinswill.com

CLIENT
Maine Medical Center
Maine Health
Maine Medical Center
22 Bramhall Street
Portland, ME 04102

CONSULTANTS
ARCHITECT
Seage Technical Inc.
75 John Paulus Road, Suite 1A
Saco, Portland, ME 04104
STRUCTURAL ENGINEER
Stanger Group & Hyatt Inc.
41 Spring Street, Building 1, Suite 500
Waterville, ME 05697
MECHANICAL ENGINEER
ASB Group LLC
88 Broadway Street, 2nd Floor, Durham, MA 01919
ELECTRICAL ENGINEER
TURNER CONSTRUCTION
2 Skyles Lane, Suite 205, Bethel, ME 04215
LANDSCAPE ARCHITECT
VDA (Van Dusen & Associates)
101 Summit Street, 4th Floor, Durham, MA 01919
GENERAL CONTRACTOR
D.G. Jones International
7 Bethel Green Center, Suite 202, Wilton, ME 04199
MEDICAL EQUIPMENT PLANNING
Medical Planning
619 Dunbar Road, Suite 302, Westbrook, ME 04092

PROJECT TITLE
Congress Street Building
22 Bramhall Street
Portland ME 04102



STRIPING KEY

- SSWL SOLID SINGLE WHITE LINE
- DSWL DASHED SINGLE WHITE LINE
- SDYL SOLID DOUBLE YELLOW LINE

KEY NOTES

- 1-1 SETBACK
- 2- CONGRESS STREET
- 3- VISITOR GARAGE
- 4- EAST TOWER
- 5- CHURCH LUTHERY PLANT
- 6- SEAN BUILDING
- 7- INDOORS BUILDING
- 8- HANE GENERAL BUILDING
- 9- TP DOWN GRANITE CURB
- 10- 24" SOLID WHITE PAINT DASHES, 5 FT. WIDE, SPACED 24" APART
- 11- 02 4" SOLID YELLOW PAINT LINES
- 12- NEW STREET LIGHT - SEE SITE ELECTRICAL PLAN
- 13- 5 FT. X 10 FT. TREE WELL - GRANITE CURB SET 6" ABOVE SIDEWALK
- 14- METRO BUS STOP LOCATION
- 15- EXISTING TELEPHONE VAULT TO REMAIN
- 16- SIGN DIRECTIONAL SIGN - SEE SIGNAGE PLAN
- 17- SIGN PRIMARY SIGN ON BATTERY WALL - SEE SIGNAGE PLAN
- 18- BATTERY RETAINING WALL
- 19- 18" SEAL WALL
- 20- GRANITE STAR - 5 RISERS PER FLIGHT
- 21- STAINLESS STEEL BOLLARD
- 22- STAINLESS STEEL HANDRAIL
- 23- NEW TYPE 1 GRANITE CURB SET 6" ABOVE PAVING
- 24- STOP SIGN
- 25- BUILDING CANOPY
- 26- EXPRESS STAR - SEE ARCHITECTURAL PLANS
- 27- BRIDGE CONNECTION - SEE ARCHITECTURAL PLANS
- 28- RESET CURB FLUSH W/STREET
- 29- PARKING RIGHT / NO PARKING RIGHT
- 30- PARKING RIGHT / NO PARKING LEFT
- 31- BRG LANE SYMBOL - WHITE PAINT PER MUTCO STANDARDS
- 32- 4" X 12" GRANITE ASCENT BAND
- 33- 4" X 12" GRANITE ASCENT BAND
- 34- SIGN CLIP CONTROL JOINT
- 35- METRO BUS STOP SIGN
- 36- 12" WHITE PAINTED STOP BAR
- 37- CONCRETE BLOCK RETAINING WALL
- 38- UTILITY POLE TO REMAIN
- 39- POLE GUY TO REMAIN
- 40- GUY TO SET SIDEWALK GUY
- 41- BUILDING WALL EXTENSION - SEE ARCHITECTURAL PLANS
- 42- SHAVED IRON LANE SYMBOL - WHITE PAINT PER MUTCO STANDARDS
- 43- REPLACE TOP OF CURB SIGN WITH NEW EXISTING CURB. ROTATE COVER OUT OF CROSSWALK STRIPING TO EXTENT PRACTICABLE.
- 44- LEFT TURN ARROW - WHITE PAINT PER MUTCO STANDARDS
- 45- REPLACE TOP OF CURB SIGN WITH NEW EXISTING CURB. ROTATE COVER OUT OF CROSSWALK STRIPING TO EXTENT PRACTICABLE.

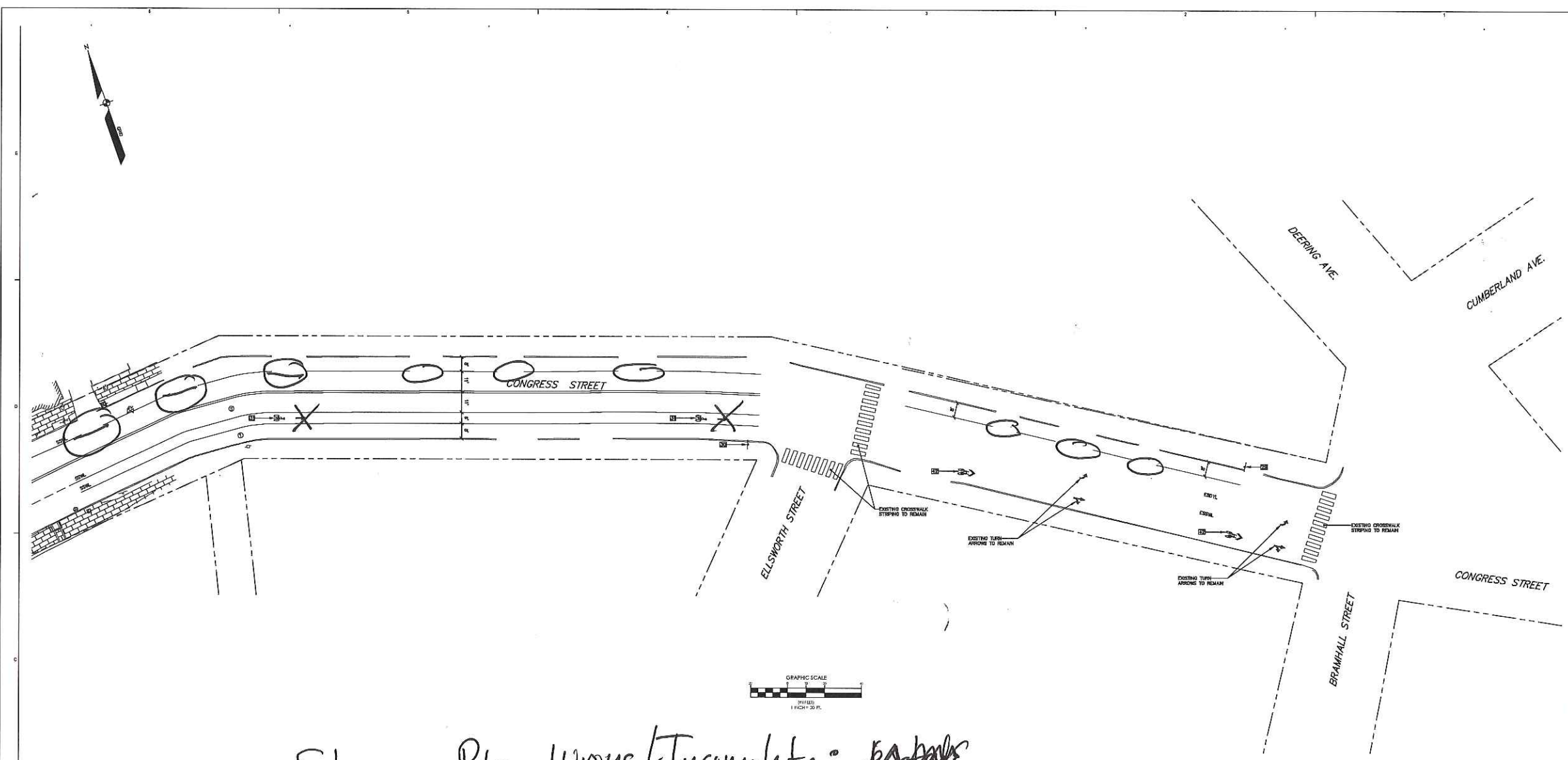
ISSUED FOR BID
JULY 12, 2019

NO.	ISSUE	DATE

TITLE
**SITE PLAN,
UPPER CONGRESS,
CONGRESS STREET
EXPANSION**

SHEET NUMBER
C05-02

Copyright 2019 Perkins + Will



Striping Plan Wrong/Incomplete: ~~errors~~

- * Bike Lane Striping wrong; wrong line widths
- * Lane markings incomplete, Deering Ave to St. John St.
- * SLMs missing, WB

BAH/PJUD
7/23/19

- STRIPING KEY**
- BSWL SOLID SINGLE WHITE LINE
 - BSWL DASHED SINGLE WHITE LINE
 - BSYL SOLID DOUBLE YELLOW LINE
 - ESWL EXISTING SINGLE WHITE LINE
 - ESYL EXISTING DOUBLE YELLOW LINE
- KEY NOTES**
- 01 PAVEMENT SAW CUT
 - 02 ASPHALT STREET PAVING
 - 03 4" CONCRETE PAVING
 - 04 NEW BRICK PAVING
 - 05 TACTILE WARNING PLATES 3 FT. X 4 FT.
 - 06 RESET BALANCED GRANITE CURB
 - 07 NEW SLOPED GRANITE CURB
 - 08 TIP DOWN GRANITE CURB
 - 09 2" SOLID WHITE PAINT BARS, 6 FT. WIDE, SPACED 24" APART
 - 10 4" SOLID YELLOW PAINT LINES
 - 11 NEW STREET LIGHT - SEE SITE ELECTRICAL PLAN
 - 12 5 FT. X 10 FT. TREE WELL - GRANITE CURB SET 6" ABOVE SIDEWALK
 - 13 METRO BUS STOP LOCATION
 - 14 EXISTING TELEPHONE VAULT TO REMAIN
 - 15 1/2" DIRECTIONAL SIGN - SEE SIGNAGE PLAN
 - 16 1/2" PRELIMINARY SIGN OR BATTERY WALL - SEE SIGNAGE PLAN
 - 17 BATTERY REBARING WALL
 - 18 1/2" SEAT WALL
 - 19 GRANITE STAIR - 5 RISERS PER FLIGHT
 - 20 STAINLESS STEEL BOLLARD
 - 21 STAINLESS STEEL HANDRAIL
 - 22 NEW TYPE 1 GRANITE CURB SET 6" ABOVE PAVING
 - 23 STOP SIGN
 - 24 BUILDING GAWP
 - 25 EXPRESS STAR - SEE ARCHITECTURAL PLANS
 - 26 BRIDGE CONNECTOR - SEE ARCHITECTURAL PLANS
 - 27 RESET CURB FLUSH W/STREET
 - 28 PARKING LEFT / NO PARKING RIGHT
 - 29 PARKING RIGHT / NO PARKING LEFT
 - 30 BIKI LANE STRIPING - WHITE PAINT PER MUTCD STANDARDS
 - 31 2" X 1/2" GRANITE ACCENT BAND
 - 32 4" X 1/2" GRANITE ACCENT BAND
 - 33 SAW CUT CONTROL JUNT
 - 34 METRO BUS STOP SIGN
 - 35 1/2" WHITE PAINTED STOP BAR
 - 36 CONCRETE BLOCK RETAINING WALL
 - 37 UTILITY POLE TO REMAIN
 - 38 POLE GUY TO REMAIN
 - 39 CAP TO SET SIDEWALK GUY
 - 40 BUILDING WALL EXTENSION - SEE ARCHITECTURAL PLANS
 - 41 SHARDED BIKI LANE STRIPING - WHITE PAINT PER MUTCD STANDARDS
 - 42 LEFT TURN ARROW - WHITE PAINT PER MUTCD STANDARDS
 - 43 REPLACE TOP OF EXISTING BUSH WITH NEW EXISTING CONC. ROTATE COVER OUT OF CROSSWALK STRIPING TO EXTENT PRACTICABLE.

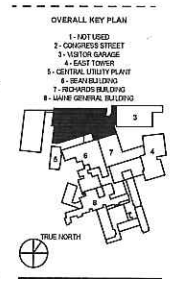
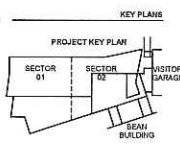
PERKINS + WILL
225 Franklin Street, Suite 1100
Portland, ME 04102
603.478.2000
603.478.2001
www.perkinswill.com

CLIENT
Maine Medical Center
Maine Medical Center
22 Bramhall Street
Portland, ME 04102

CONSULTANTS

- ARCHITECT/ARCHITECT ARCHITECT
Soligo Technics Inc.
28 John Fitch St. Room 1A
South Portland, ME 04106
- STRUCTURAL/MECHANICAL/ELECTRICAL/PLUMBING CONSULTANT
Shapiro Gump & Hoyle Inc.
41 Seaport Street, Suite 100
Waltham, MA 02453
- MECHANICAL/ELECTRICAL/PLUMBING
AEF Group LLC
18 Bedford Street, 2nd Floor, Waltham, MA 02453
- CONSTRUCTION SUPERVISOR
TURNER CONSTRUCTION
7 Seaport Lane, Suite 200, Waltham, MA 02453
- ENVIRONMENTAL CONSULTANT
YEA (Van Dusen & Associates)
151 Sumner Street, 4th Floor, Boston, MA 02110
- UTILITY CONSULTANT
D.C. Jones International
2000 Green Center, Suite 200, Waltham, MA 02453
- MEDICAL EXHIBIT/PLANNING
Hickell Planning
400 Dunbar Road, Suite 300, Waltham, MA 02453

PROJECT TITLE
Congress Street Building
22 Bramhall Street
Portland ME 04102



ISSUED FOR BID
JULY 12, 2019

NO.	ISSUE	DATE
Job Number	152165 000	
Drawn	WAL	
Checked	WVC	
Approved	DKR	

TITLE
**SITE PLAN,
MID CONGRESS,
CONGRESS STREET
EXPANSION**

SHEET NUMBER
C05-2A

Copyright 2019 © Perkins + Will

Stop sign not in middle of sidewalk;
 Move closer once ramp relocated

Ramp design wrong / re-align as shown
 Lo confirm walk with ~~hand~~ ^{hand} ~~show~~ ^{show} bus stop relocation

Consider new corner radii to better align crosswalk/ramps

no detectable warning req'd / no tipdown

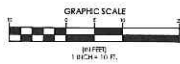
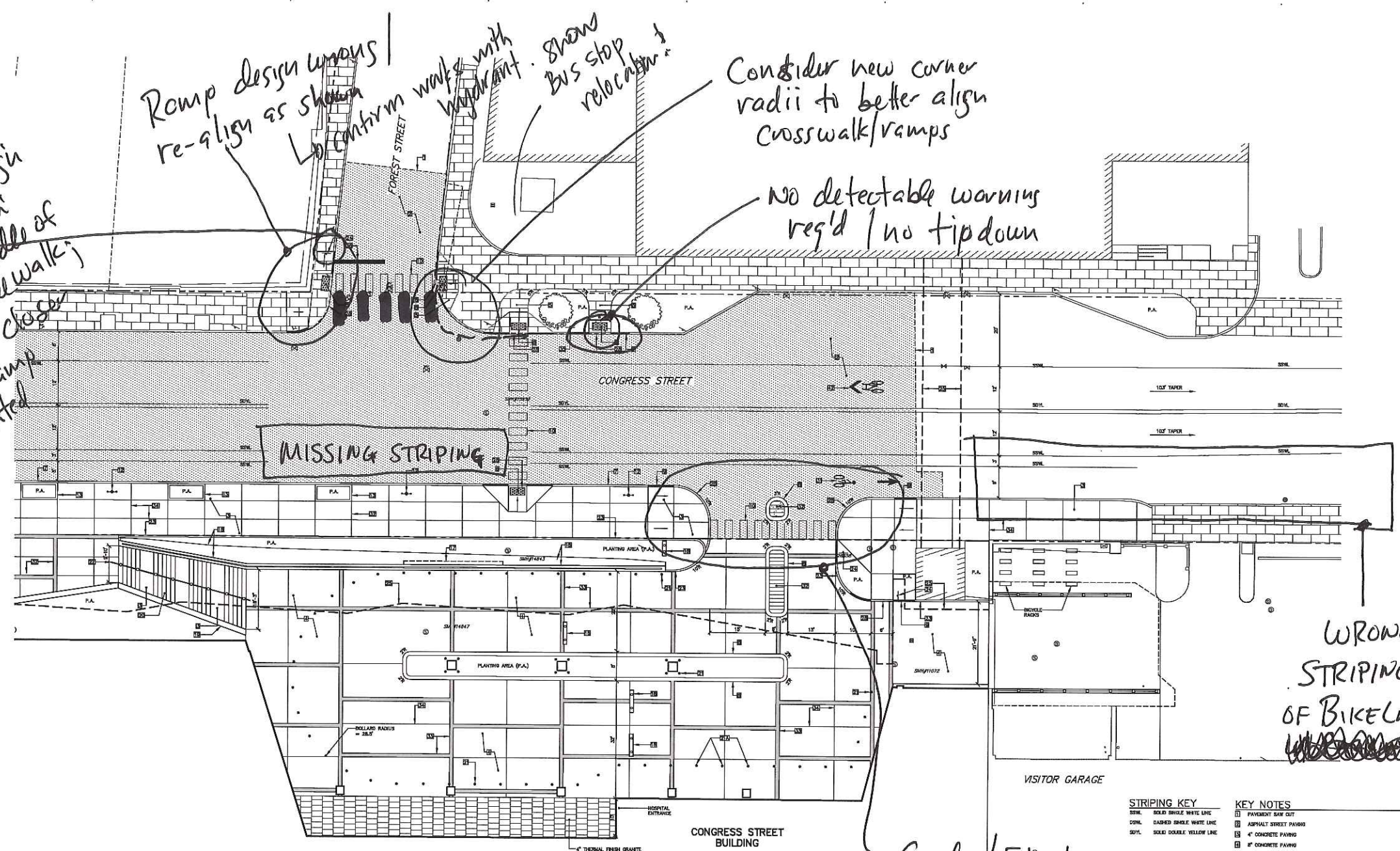
MISSING STRIPING

WRONG STRIPING OF BIKE LANE

* Grades / Elevation provided
 * Concrete Driveway

* BL Striping wrong / incomplete
 *

BAH/P+UD
 7/23/19



STRIPING KEY

SSM	SOLID SINGLE WHITE LINE
DSL	DASHED SINGLE WHITE LINE
SDL	SOLID DOUBLE YELLOW LINE

KEY NOTES

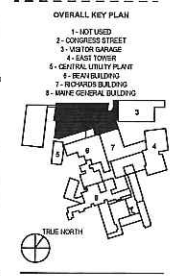
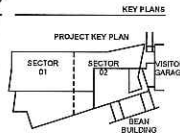
- 1- NOT USED
- 2- CONGRESS STREET
- 3- VISITOR GARAGE
- 4- EAST TOWER
- 5- GENERAL UTILITY PLANE
- 6- SEAN BUILDING
- 7- HOWARD BUILDING
- 8- WINE GENERAL BUILDING
- 9- PAVEMENT SAW CUT
- 10- ASPHALT STREET PAVING
- 11- 4" CONCRETE PAVING
- 12- 8" CONCRETE PAVING
- 13- NEW BRICK PAVING
- 14- TYPICAL WARDING PLATES 9 FT. X 4 FT.
- 15- RESET SALVAGED GRANITE CURB
- 16- NEW SALVAGED GRANITE CURB
- 17- TOP DOWN GRANITE CURB
- 18- 24" SOLID WHITE PAINT BARS, 6 FT. WIDE, SPACED 24" APART
- 19- (2) 4" SOLID YELLOW PAINT LINES
- 20- NEW STREET LIGHT - SEE SITE ELECTRICAL PLAN
- 21- 8 FT. X 10 FT. TREE WELL - GRANITE CURB SET 8" ABOVE SIDEWALK
- 22- METRO BUS STOP LOCATION
- 23- EXISTING TELEPHONE VALET TO REMAIN
- 24- NEW DIRECTIONAL SIGN - SEE STORAGE PLAN
- 25- NEW PROMINENT SIGN ON BATTERY WALL - SEE STORAGE PLAN
- 26- BATTERY RETAINING WALL
- 27- 18" SEAT WALL
- 28- GRANITE STAIR - 8 RISERS PER FLIGHT
- 29- STAINLESS STEEL BOLLARD
- 30- REMOVABLE BOLLARD
- 31- STAINLESS STEEL HANDRAIL
- 32- NEW TYPE 1 GRANITE CURB SET 8" ABOVE PAVING
- 33- STOP SIGN
- 34- BUILDING CANOPY
- 35- CURVED STAIR - SEE ARCHITECTURAL PLANS
- 36- BRIDGE CONNECTION - SEE ARCHITECTURAL PLANS
- 37- RECYCLE CURB FLUSH W/STREET
- 38- PARKING LEFT / NO PARKING RIGHT
- 39- PARKING RIGHT / NO PARKING LEFT
- 40- BLUE LAKE SYMBOL - WHITE PAINT FOR MUTED STAIRWAYS
- 41- 6" X 12" GRANITE ACCENT BAND
- 42- 4" X 12" GRANITE ACCENT BAND
- 43- SAW CUT CONTROL JOINT
- 44- METRO BUS STOP SIGN
- 45- 12" WHITE PAINTED STOP BAR
- 46- CONCRETE BLOCK RETAINING WALL
- 47- UTILITY POLE TO REMAIN
- 48- POLE GUY TO REMAIN
- 49- CMP TO SET SIDEWALK OUT
- 50- BUILDING WALL EXTENSION - SEE ARCHITECTURAL PLANS
- 51- SHAVED SIDE LAKE SYMBOL - WHITE PAINT FOR MUTED STAIRWAYS
- 52- LEFT TURN ARROW - WHITE PAINT FOR MUTED STAIRWAYS
- 53- REPLACE TOP OF CATCH BASIN WITH NEW ECONOMY CONC. ROTATE COVER OUT OF CROSSWALK STRIPING TO EXTENT PRACTICABLE

PERKINS + WILL
 225 Franklin Street, Suite 1100
 Boston, MA 02110
 617.452.2000
 617.452.3333
 www.perkinswill.com

CLIENT
Maine Medical Center
 MaineHealth
Maine Medical Center
 22 Bramhall Street
 Portland, ME 04102

CONSULTANTS
 CIVIL/ARCHITECTURE/INTERIOR
 Setpoint Technical Inc.
 78 John Pilsbury Road, Suite 1A
 South Portland, ME 04106
 STRUCTURAL/MECHANICAL/ELECTRICAL/PLUMBING/HAZARDOUS WASTE
 Simpson Gumpertz & Heger Inc.
 41 Seign Street, Building 8, Suite 300
 Waterville, ME 05671
 MECHANICAL/ELECTRICAL/PLUMBING
 ANF Group LLC
 89 Bradford Street, 2nd Floor, Boston, MA 02111
 CONSTRUCTION MANAGEMENT
 ROBINER CONSTRUCTION
 2 Sequest Lane, Suite 200, Bethen, ME 05219
 MECHANICAL/ELECTRICAL/PLUMBING
 VDA (Van Dusen & Associates)
 181 Summer Street, 4th Floor, Boston, MA 02110
 COST ESTIMATION
 D.E. Jones International
 700 North Green Street, Suite 202, Waterville, ME 05671
 MEDICAL PROGRAM PLANNING
 Mitchell Planning
 533 Denike Road, Suite 201, Westbrook, ME 04092

PROJECT TITLE
Congress Street Building
 22 Bramhall Street
 Portland ME 04102



ISSUED FOR BID
 JULY 12, 2019

NO.	ISSUE	DATE
Job Number	102189000	
Drawn	MLL	
Checked	WTC	
Approved	DJR	

TITLE
**SITE PLAN,
 MID CONGRESS,
 CONGRESS STREET
 EXPANSION**
 SHEET NUMBER
C05-03

Striping Plans to St. John St

NO indication of signal removal

Two Ramps/Not ADA as designed -

Ramp Modr/ not ADA
Ramp Mods/ADA

Re-align

Design Details

BAH/P+UD
7/23/19

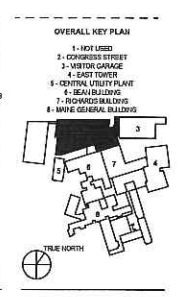
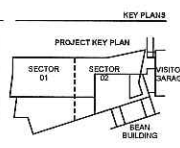
* Sign orientations wrong
* Bus Shelter/ design details missing
Stop

PERKINS + WILL
225 Park St, Suite 1100
Boston, MA 02114
617.452.5000
perkinswill.com

CLIENT
Maine Medical Center
MaineHealth
Maine Medical Center
22 Bramhall Street
Portland, ME 04102

CONSULTANTS
CHALLENGER ARCHITECT
Sebagh Technics Inc.
75 John Pilsbury Road, Suite 1A
South Portland, ME 04106
STRATEGICAL DESIGN GROUP
Strategic Concepts & Design Inc.
41 Super Street, Suite 205
Watson, MA 02457
MARTY ARCHITECTURE
MAY Group LLC
89 Bradford Street, 2nd Floor, Boston, MA 02111
THUNDER CONSTRUCTION
2 Striped Lane, Suite 205, Boston, MA 02108
VDA (Van Dusen & Associates)
181 Summer Street, 4th Floor, Boston, MA 02110
D.J. Jones International
7 Western Green Center, Suite 200, Watson, MA 02457
MEDICAL EQUIPMENT PLANNING
Michael Planning
639 Charles Road, Suite 202, Portland, ME 04102

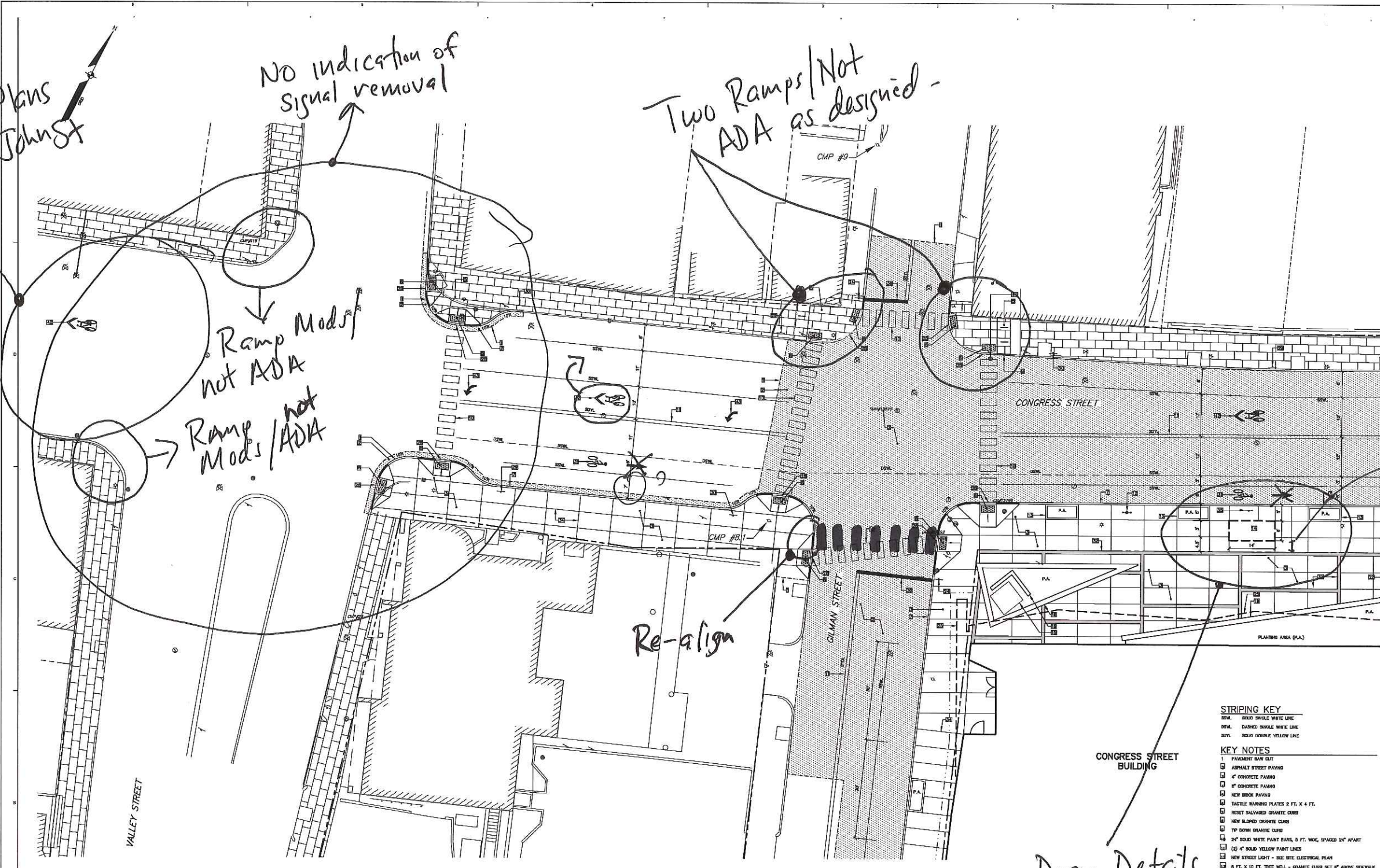
PROJECT TITLE
Congress Street Building
22 Bramhall Street
Portland ME 04102



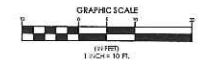
ISSUED FOR BID
JULY 12, 2019

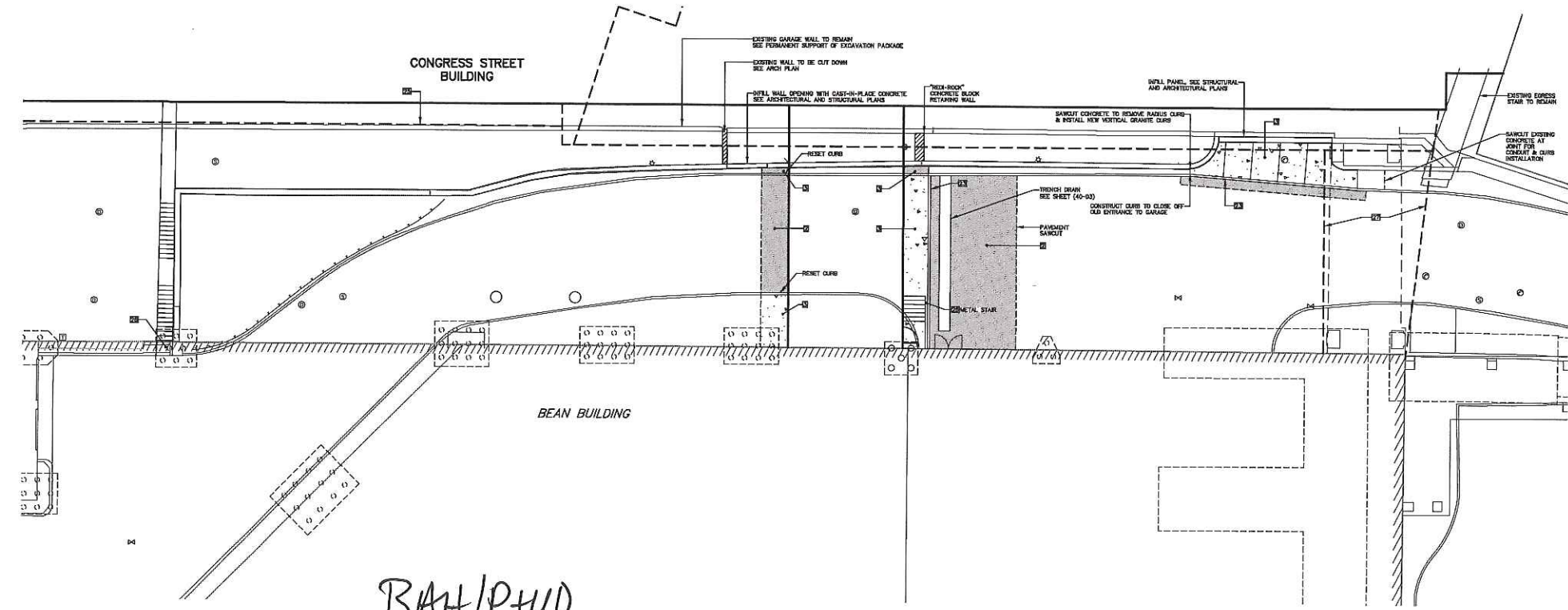
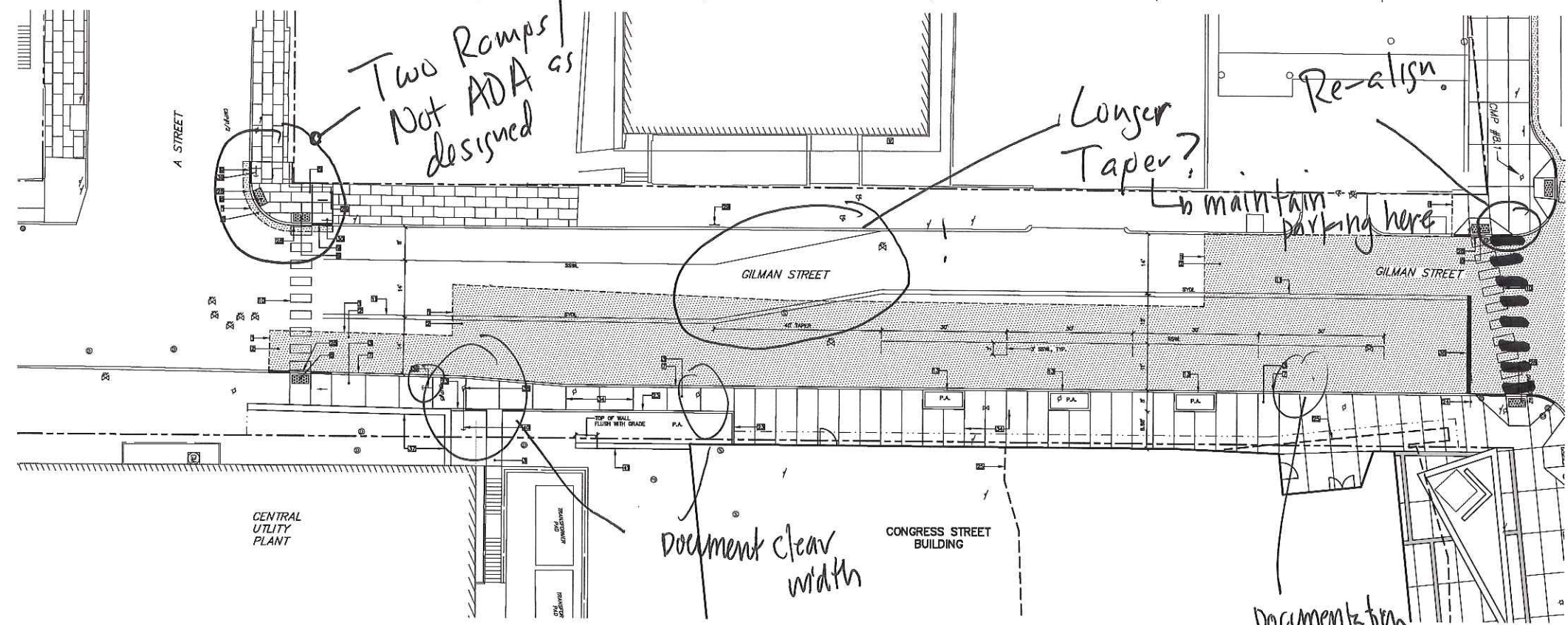
NO.	ISSUE	DATE
1	Job Number	152109-000
2	Drawn	MAL
3	Checked	WTC
4	Approved	DLR

TITLE
SITE PLAN,
LOWER CONGRESS,
CONGRESS STREET
EXPANSION
SHEET NUMBER
C05-04
Copyright 2019 © Perkins + Will



- STRIPING KEY
- SBLK - SOLID SINGLE WHITE LINE
 - DBLK - DASHED SINGLE WHITE LINE
 - DBYL - SOLID DOUBLE YELLOW LINE
- KEY NOTES
1. PARALLEL SAW CUT
 2. ASPHALT STREET PAVING
 3. 4" CONCRETE PAVING
 4. 8" CONCRETE PAVING
 5. NEW BRICK PAVING
 6. TACTILE WARNING PLATES 2 FT. X 4 FT.
 7. RESET SALVAGED GRANITE CURB
 8. NEW SLOPED GRANITE CURB
 9. 1" DOWN GRANITE CURB
 10. 2" SOLID WHITE PAINT BARS, 6 FT. WIDE, SPACED 24" APART
 11. (2) 4" SOLID YELLOW PAINT LINES
 12. NEW STREET LIGHT - SEE SITE ELECTRICAL PLAN
 13. 6 FT. X 10 FT. TIER WALL - GRANITE CURB SET 4" ABOVE SIDEWALK
 14. METRO BUS STOP LOCATION
 15. EXISTING TELEPHONE VAULT TO REPAIR
 16. MANC DIRECTIONAL SIGN - SEE SIGNAGE PLAN
 17. MANC PRIMARY SIGN ON BATTERY WALL - SEE SIGNAGE PLAN
 18. BATTERY RETAINING WALL
 19. 18" DEAR WALL
 20. GRANITE STAIR - 3 RISERS PER FLIGHT
 21. STAINLESS STEEL BOLLARD
 22. STAINLESS STEEL HANDRAIL
 23. NEW TYPE 1 GRANITE CURB SET 4" ABOVE PAVING
 24. STOP SIGN
 25. BUILDING LAUNDRY
 26. FURROW STAIR - SEE ARCHITECTURAL PLANS
 27. BRIDGE CONNECTION - SEE ARCHITECTURAL PLANS
 28. RESET CURB FLUSH W/STREET
 29. PARKING LEFT / NO PARKING RIGHT
 30. PARKING RIGHT / NO PARKING LEFT
 31. ONE LANE SYMBOL - WHITE PAINT PER MUTCD STANDARDS
 32. 2" X 12" GRANITE ACCENT BAND
 33. 4" X 12" GRANITE ACCENT BAND
 34. SAW CUT CONTROL JOINT
 35. METRO BUS STOP SIGN
 36. 12" WHITE PAINTED STOP BAR
 37. CONCRETE BLOCK RETAINING WALL
 38. UTILITY POLE TO REPAIR
 39. POLE SKY TO REPAIR
 40. CMP TO SET SIDEWALK GRAY
 41. BUILDING WALL EXTENSION - SEE ARCHITECTURAL PLANS
 42. SHAVED ONE LANE SYMBOL - WHITE PAINT PER MUTCD STANDARDS
 43. LEFT TURN ARROW - WHITE PAINT PER MUTCD STANDARDS
 44. REPLACE TOP OF CATCH BASIN WITH NEW ECCENTRIC CORNER, ROTATE CENTER OUT OF CROSSWALK STRIPING TO EXTENT PRACTICABLE





BAH/PHUD
7/23/19

PERKINS + WILL

235 South Street, Suite 1100
Portland, ME 04102
Tel: 603.433.8300
Fax: 603.433.8301
www.perkinswill.com

CLIENT

Maine Medical Center
MaineHealth

Maine Medical Center
22 Bramhall Street
Portland, ME 04102

CONSULTANTS

OVERALL ARCHITECT
Sobago Technics Inc.
75 John Polaris Road, Suite 1A
South Portland, ME 04106

STRUCTURAL ARCHITECT
Sobago Technics & Design Inc.
41 Seaport Street, Suite 300
Portland, ME 04102

MECHANICAL, ELECTRICAL, PLUMBING CONSULTANT
AIF Group LLC
10 Bradford Street, 2nd Floor, Portland, ME 04102

GENERAL CONTRACTOR
TUNNEY CONSTRUCTION
7 Shapell Lane, Suite 200, South Portland, ME 04106

GENERAL CONTRACTOR
VDA (Van Dusen & Associates)
101 Sumner Street, 4th Floor, Portland, ME 04102

GENERAL CONTRACTOR
D.G. Jones International
300 Main Street, Suite 200, Portland, ME 04102

GENERAL CONTRACTOR
Michael Planning
633 Danbury Road, Suite 300, Westbrook, ME 04092

PROJECT TITLE

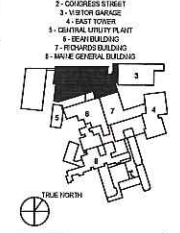
Congress Street Building
22 Bramhall Street
Portland, ME 04102



KEY PLANS



OVERALL KEY PLAN



ISSUED FOR BID
JULY 12, 2019

NO.	ISSUE	DATE
1	Job Number	152183-000
2	Drawn	JAL
3	Checked	WTC
4	Approved	DJR

TITLE
SITE PLAN,
GILMAN STREET,
CONGRESS STREET
EXPANSION

SHEET NUMBER
C05-05

Copyright 2019 © Perkins + Will

STRIPING KEY
SBLK. SOLID SINGLE WHITE LINE
SDMK. DASHED SINGLE WHITE LINE
SDFL. SOLID DOUBLE YELLOW LINE

KEY NOTES

- 01 PAVEMENT SAW CUT
- 02 ASPHALT STREET PAVING
- 03 4" CONCRETE PAVING
- 04 8" CONCRETE PAVING
- 05 NEW DECK PAVING
- 06 TACTILE WARNING PLATES 2 FT. X 4 FT.
- 07 RESET SANITIZED GRANITE CURB
- 08 NEW BLOTTED GRANITE CURB
- 09 1" DOWN GRANITE CURB
- 10 2" SOLID WHITE PAINT BARS, 6 FT. WIDE, SPACED 24" APART
- 11 (2) 4" SOLID YELLOW PAINT LINES
- 12 NEW STREET LIGHT - SEE SITE ELECTRICAL PLAN
- 13 5 FT. X 10 FT. TREE WELL - GRANITE CURB SET 8" ABOVE SIDEWALK
- 14 METRO BUS STOP LOCATION
- 15 EXISTING TELEPHONE VAULT TO REMAIN
- 16 BASIC STRUCTURAL SIGN - SEE SIGNAGE PLAN
- 17 BASIC PRIMARY SIGN ON BATTERY WALL - SEE SIGNAGE PLAN
- 18 BATTERY RETAINING WALL
- 19 18" SEAT WALL
- 20 GRANITE SEAT - 8 BENCH PER FLIGHT
- 21 STAINLESS STEEL ROLLBAR
- 22 STAINLESS STEEL HANDRAIL
- 23 NEW TYPE 1 GRANITE CURB SET 8" ABOVE PAVEMENT
- 24 STOP SIGN
- 25 BUILDING CANOPY
- 26 EXPRESS STAIR - SEE ARCHITECTURAL PLANS
- 27 BRIDGE CONNECTION - SEE ARCHITECTURAL PLANS
- 28 BRIDGE CURB FLASH W/STRIPS
- 29 PARKING BAY / NO PARKING RIGHT
- 30 PARKING BAY / NO PARKING LEFT
- 31 TRUCK LANE STRIPING - WHITE PAINT PER MUTED STANDARDS
- 32 2" X 12" GRANITE ACCENT BAND
- 33 4" X 12" GRANITE ACCENT BAND
- 34 SAW CUT CONTROL JOINT
- 35 METRO BUS STOP SIGN
- 36 12" WHITE PAINTED STOP BAR
- 37 CONCRETE BLOCK RETAINING WALL
- 38 UTILITY POLE TO REMAIN
- 39 POLE CUT TO REMAIN
- 40 CMP TO SET SIDEWALK CUT
- 41 BRIDGING WALL DETAIL - SEE ARCHITECTURAL PLANS
- 42 SHARPER BAY LANE STRIPING - WHITE PAINT PER MUTED STANDARDS
- 43 LEFT TURN ARROW - WHITE PAINT PER MUTED STANDARDS
- 44 REPLACE TOP OF CAATCH BASIN WITH NEW EXISTING CURB, ROTATE COVER OUT OF CROSSWALK STRIPING TO EXTENT PRACTICABLE

Eliminate me + manage queue off-site in favor of maintaining on-street parking

STRIPING KEY

- 4" SSWL SOLID SINGLE WHITE LINE
- DSWL DASHED SINGLE WHITE LINE
- SDYL SOLID DOUBLE YELLOW LINE

Need:
6" solid white
6" dashed white

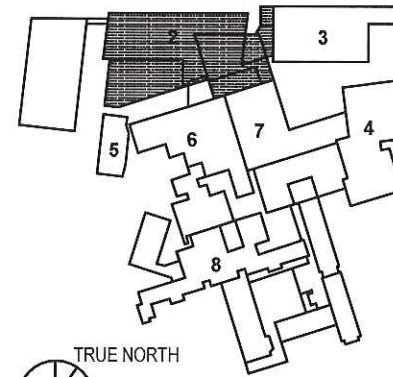
KEY NOTES

- 1 PAVEMENT SAW CUT
- 2 ASPHALT STREET PAVING
- 3 4" CONCRETE PAVING
- 4 8" CONCRETE PAVING
- 5 NEW BRICK PAVING
- 6 TACTILE WARNING PLATES 2 FT. X 4 FT.
- 7 RESET SALVAGED GRANITE CURB
- 8 NEW SLOPED GRANITE CURB
- 9 TIP DOWN GRANITE CURB
- 10 24" SOLID WHITE PAINT BARS, 5 FT. WIDE, SPACED 24" APART
- 11 (2) 4" SOLID YELLOW PAINT LINES
- 12 NEW STREET LIGHT - SEE SITE ELECTRICAL PLAN
- 13 5 FT. X 10 FT, TREE WELL - GRANITE CURB SET 6" ABOVE SIDEWALK
- 14 METRO BUS STOP LOCATION
- 15 EXISTING TELEPHONE VAULT TO REMAIN
- 16 MMC DIRECTIONAL SIGN - SEE SIGNAGE PLAN
- 17 MMC PRIMARY SIGN ON BATTER WALL - SEE SIGNAGE PLAN
- 18 BATTER RETAINING WALL
- 19 18" SEAT WALL
- 20 GRANITE STAIR - 5 RISERS PER FLIGHT
- 21 STAINLESS STEEL BOLLARD
- 22 STAINLESS STEEL HANDRAIL
- 23 NEW TYPE 1 GRANITE CURB SET 6" ABOVE PAVING
- 24 STOP SIGN
- 25 BUILDING CANOPY
- 26 EGRESS STAIR - SEE ARCHITECTURAL PLANS
- 27 BRIDGE CONNECTOR - SEE ARCHITECTURAL PLANS
- 28 RESET CURB FLUSH W/STREET
- 29 PARKING LEFT / NO PARKING RIGHT
- 30 PARKING RIGHT / NO PARKING LEFT
- 31 BIKE LANE SYMBOL - WHITE PAINT PER MUTCD STANDARDS
- 32 2" X 12" GRANITE ACCENT BAND
- 33 4" X 12" GRANITE ACCENT BAND
- 34 SAW CUT CONTROL JOINT
- 35 METRO BUS STOP SIGN
- 36 12" WHITE PAINTED STOP BAR
- 37 CONCRETE BLOCK RETAINING WALL
- 38 UTILITY POLE TO REMAIN
- 39 POLE GUY TO REMAIN
- 40 CMP TO SET SIDEWALK GUY
- 41 BUILDING WALL EXTENSION - SEE ARCHITECTURAL PLANS
- 42 SHARED BIKE LANE SYMBOL - WHITE PAINT PER MUTCD STANDARDS
- 43 LEFT TURN ARROW - WHITE PAINT PER MUTCD STANDARDS
- 44 REPLACE TOP OF CATCH BASIN WITH NEW ECCENTRIC CONE. ROTATE COVER OUT OF CROSSWALK STRIPING TO EXTENT PRACTICABLE

PLAN BUILDING

OVERALL KEY PLAN

- 1 - NOT USED
- 2 - CONGRESS STREET
- 3 - VISITOR GARAGE
- 4 - EAST TOWER
- 5 - CENTRAL UTILITY PLANT
- 6 - BEAN BUILDING
- 7 - RICHARDS BUILDING
- 8 - MAINE GENERAL BUILDING



TRUE NORTH

ISSUED FOR BID

JULY 12, 2019

NO	ISSUE	DATE
----	-------	------

Job Number	152189.000
Drawn	MAL
Checked	WTC
Approved	DLR

TITLE
**SITE PLAN,
UPPER CONGRESS,
CONGRESS STREET
EXPANSION**

SHEET NUMBER

C05-02

Copyright 2019 @ Perkins + Will

BAAH/P+WD
7/23/19

Shared Lane Markings

1546653-10 scale.dwg, TAB: C05-02 SITE UPPER CONGRESS