



Helen Donaldson <hcd@portlandmaine.gov>

Fwd: Gilman st parking spots

Bradley Roland <brad@portlandmaine.gov>

Tue, Jan 5, 2021 at 12:10 PM

To: Christopher Branch <cbranch@portlandmaine.gov>

Cc: Jodie Keene <JKEENE@portlandmaine.gov>, Helen Donaldson <hcd@portlandmaine.gov>, Keith Gray <kgray@portlandmaine.gov>

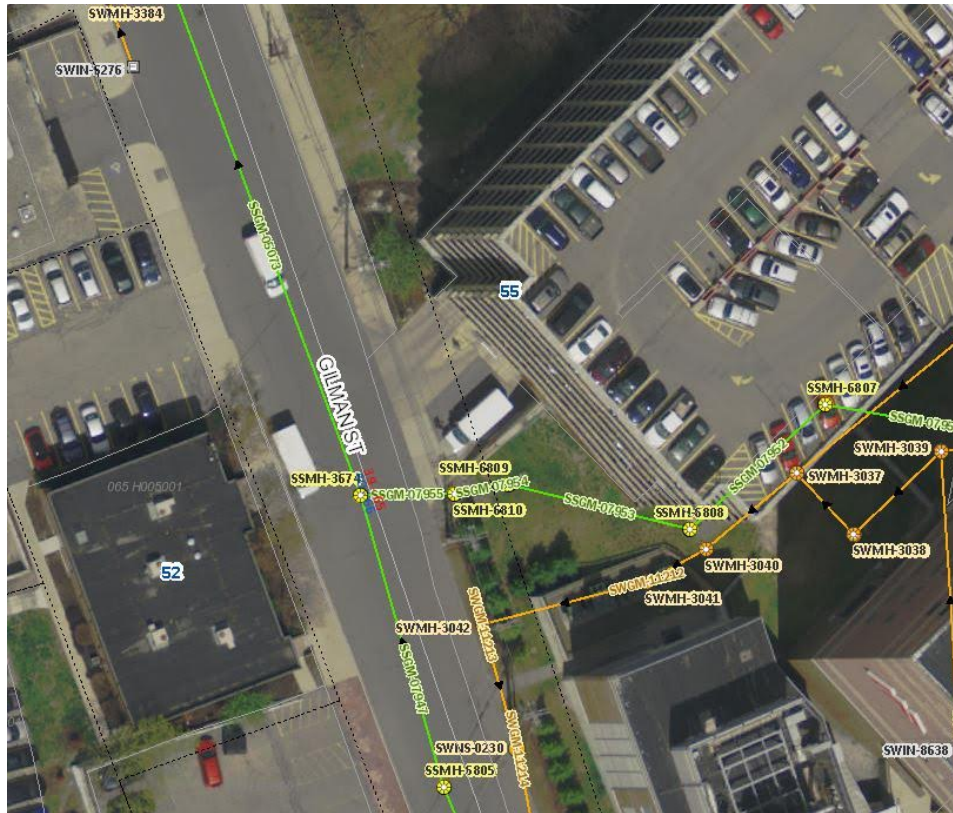
Their plans accurately reflect the storm drain in that area.

There is no storm drain in the area of the proposed work (except up at the corner with Congress which is shown correctly).

I will be making minor tweaks of the GIS to reflect their relocation of the sewer on the MMC (private) property.

See map

Brad



--
Bradley A. Roland, P.E.
Senior Project Engineer
Portland Public Works
212 Canco Road
Portland, ME 04103
Tel: 207-874-8840
Fax: 207-874-8852
brad@portlandmaine.gov

[Quoted text hidden]