

Support this change  
vertical edge req. here

remaining landscape here ok

Vertical Curb

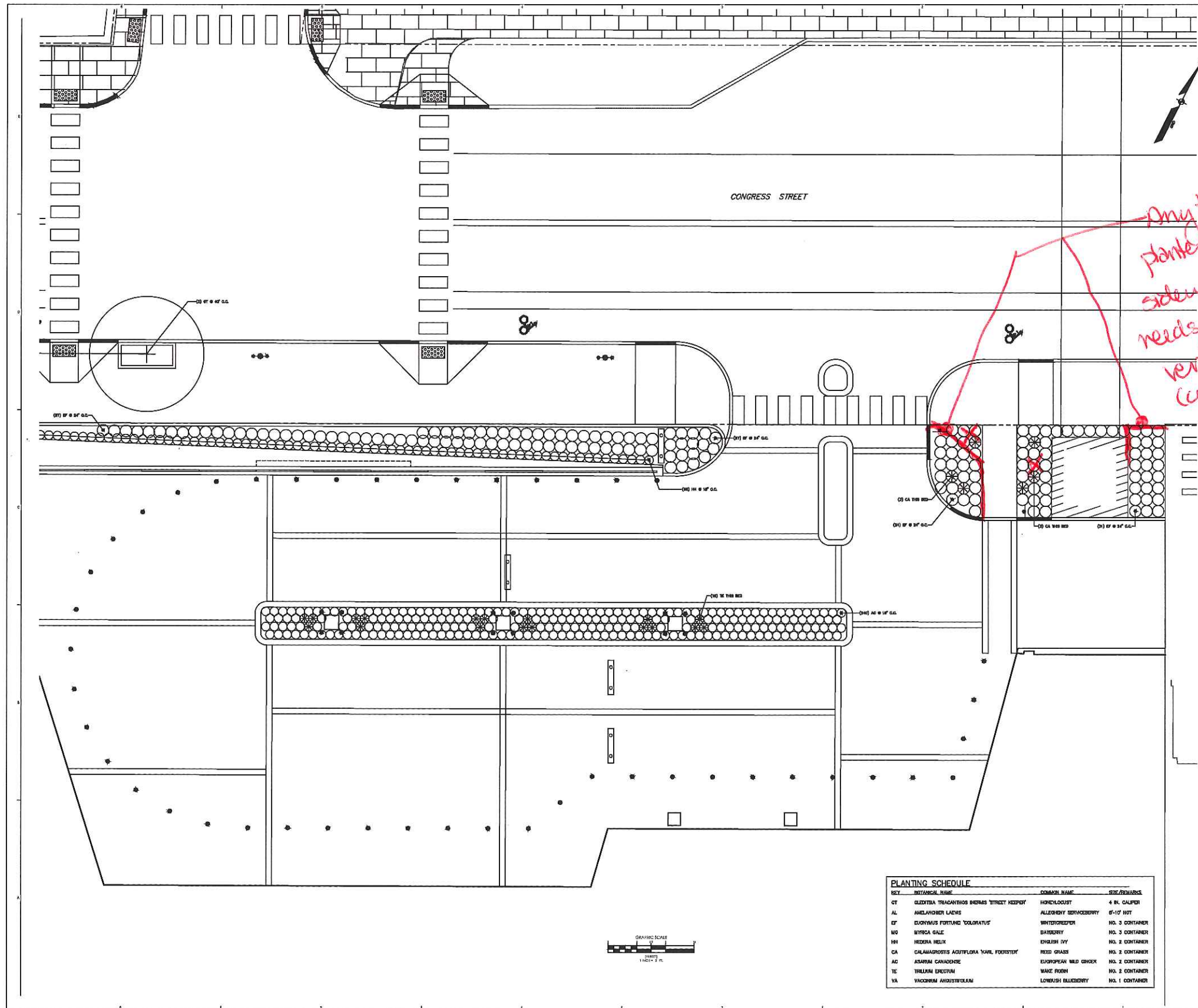
MOB  
Bridge  
Tower

concrete paving  
PA

BICYCLE  
RACKS

this should remain planted  
w/ vertical edge transition  
at sidewalk

1/18/19  
O'connor



**PERKINS + WILL**

200 Park Street, Suite 1000  
Boston, MA 02110  
Tel: 617.452.5000  
www.perkinswill.com

**CLIENT**  
Maine Medical Center  
Maine Medical Center  
22 Bramhall Street  
Portland, ME 04102

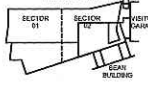
**CONSULTANTS**  
ARCHITECT: Schupp Architects Inc.  
75 Lake Avenue South, Suite 100  
Portland, ME 04102  
Landscape Architect: Perkins + Will  
200 Park Street, Suite 1000  
Boston, MA 02110  
GENERAL CONTRACTOR: Turner Construction  
200 State Street, Suite 2000  
Portland, ME 04102  
PLANTING: G.G. Jones International  
700 Commercial Street, Suite 100  
Portland, ME 04102

*Any time  
planter next to  
sidewalk (this  
needs to be  
vertical edge  
curb or planter)*

**PROJECT TITLE**  
Congress Street  
Building  
22 Bramhall Street  
Portland, ME 04102



**KEY PLANS**



**OVERALL KEY PLAN**



**RESUBMIT TO CITY**  
DECEMBER 10, 2018

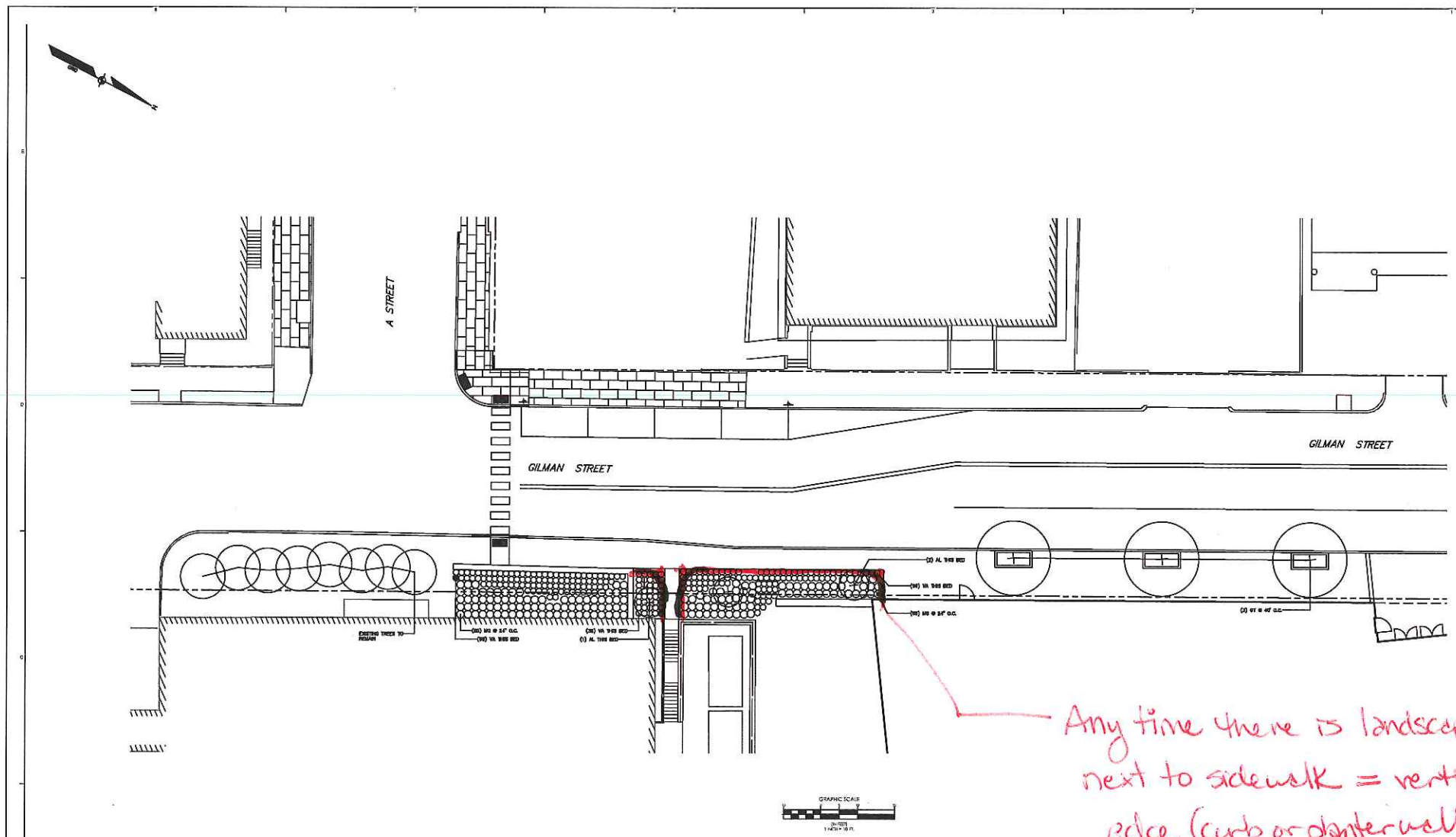
REV	ISSUE	DATE
1	ISSUE	10/10/18

**TITLE**  
LANDSCAPE PLAN,  
UPPER CONGRESS,  
CONGRESS STREET  
EXPANSION

**SHEET NUMBER**  
C50-01

KEY	BOTANICAL NAME	COMMON NAME	SIZE/REMARKS
CT	GLADIOLA TRICANTHOS BERMIS 'STREET KEEPER'	HONOLULU	4 IN. CALIPER
AL	AMELANCHIER LAEVIS	ALLEGHENY SERVICEBERRY	6'-10' HGT
EF	EUPHORAS FORTUNEI 'COLORATUS'	WINTERCREPPER	NO. 3 CONTAINER
MO	MYRTICA GALE	BAYBERRY	NO. 3 CONTAINER
HH	HEDERA HELIX	ENGLISH IVY	NO. 2 CONTAINER
CA	CALAMAGROSTIS ACUTIFLORA 'PAUL FODDYER'	REED GRASS	NO. 2 CONTAINER
AC	ASARUM CANADENSE	EUROPEAN WILD GINGER	NO. 2 CONTAINER
TE	THILLIAM ERECTUM	WAKE ROBIN	NO. 2 CONTAINER
VA	VACCINIUM ANGLUSTRELIANUM	LONGBUSH BLUEBERRY	NO. 1 CONTAINER

*1/18/19  
Cameron*



Any time there is landscape next to sidewalk = vertical edge (curb or planter wall)

radius corners highly recommended

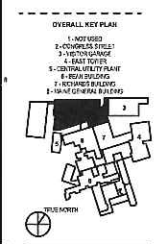
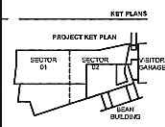
KEY	BOTANICAL NAME	COMMON NAME	SIZE/REMARKS
QT	OLESTRA TRICANTHOS BERNAS STREET KESTER	HONEYLOOST	4 BL. CALPER
AL	ARELAWORER LAEMS	ALLEGOEDY SERVOBERRY	5'-10' INT
EF	ELKINMAUS FORTLAND 'COLORATUS'	WINTERGREEN	NO. 3 CONTAINER
MG	MYRICA GALE	BAYBERRY	NO. 3 CONTAINER
IRI	HESTERIA HELIX	ENGLISH IVY	NO. 2 CONTAINER
CA	CALAMAGROSTIS ACUTIFLORA 'VALE FURSTEN'	FRENCH GRASS	NO. 2 CONTAINER
AG	ASARUM CANADENSE	EUROPEAN WILD GINGER	NO. 2 CONTAINER
TE	TRELLUM ERECTUM	WAVE IRIS	NO. 2 CONTAINER

**PERKINS + WILL**  
 603 North Dearborn Street, Suite 1100  
 Chicago, IL 60610  
 312.427.4000  
 www.perkinswill.com

CLIENT  
**Maine Medical Center**  
 Maine Medical Center  
 22 Bramhall Street  
 Portland, ME 04102

CONSULTANTS  
 PROFESSIONAL ARCHITECT  
 Soligo Feltus Inc.  
 11 Pine Street, Suite 200, Portland, ME 04101  
 PROFESSIONAL LANDSCAPE ARCHITECT  
 Simpson Gumpertz & Hager Inc.  
 400 Congress Street, Suite 200, Portland, ME 04102  
 MECHANICAL/ELECTRICAL/PLUMBING ENGINEER  
 AVE Group LLC  
 100 Portland Street, Suite 200, Portland, ME 04101  
 CONSTRUCTION MANAGER  
 TURNER CONSTRUCTION  
 2000 Congress Street, Suite 200, Portland, ME 04102  
 GENERAL CONTRACTOR  
 YDA (Dan Yankowski & Associates)  
 1715 Commercial Street, Suite 200, Portland, ME 04101  
 EXISTING PHOTO  
 D.D. Jones International  
 2000 Congress Street, Suite 200, Portland, ME 04102  
 GENERAL CONTRACTOR FOR INTERIOR  
 Walsh Flooring  
 600 Columbia Road, Suite 200, Portland, ME 04102

PROJECT TITLE  
**Congress Street Building**  
 22 Bramhall Street  
 Portland, ME 04102



RESUBMIT TO CITY  
 OCTOBER 10, 2018

NO.	DATE	BY
1	10/10/18	MAJ
2		WTC
3		CLP

TITLE  
**LANDSCAPE PLAN,  
 GILMAN STREET,  
 CONGRESS STREET  
 EXPANSION**  
 SHEET NUMBER  
 02A-00

1/18/19  
 CCameron