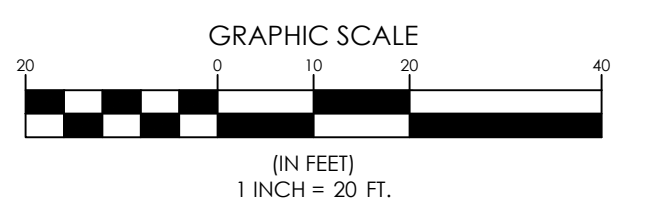
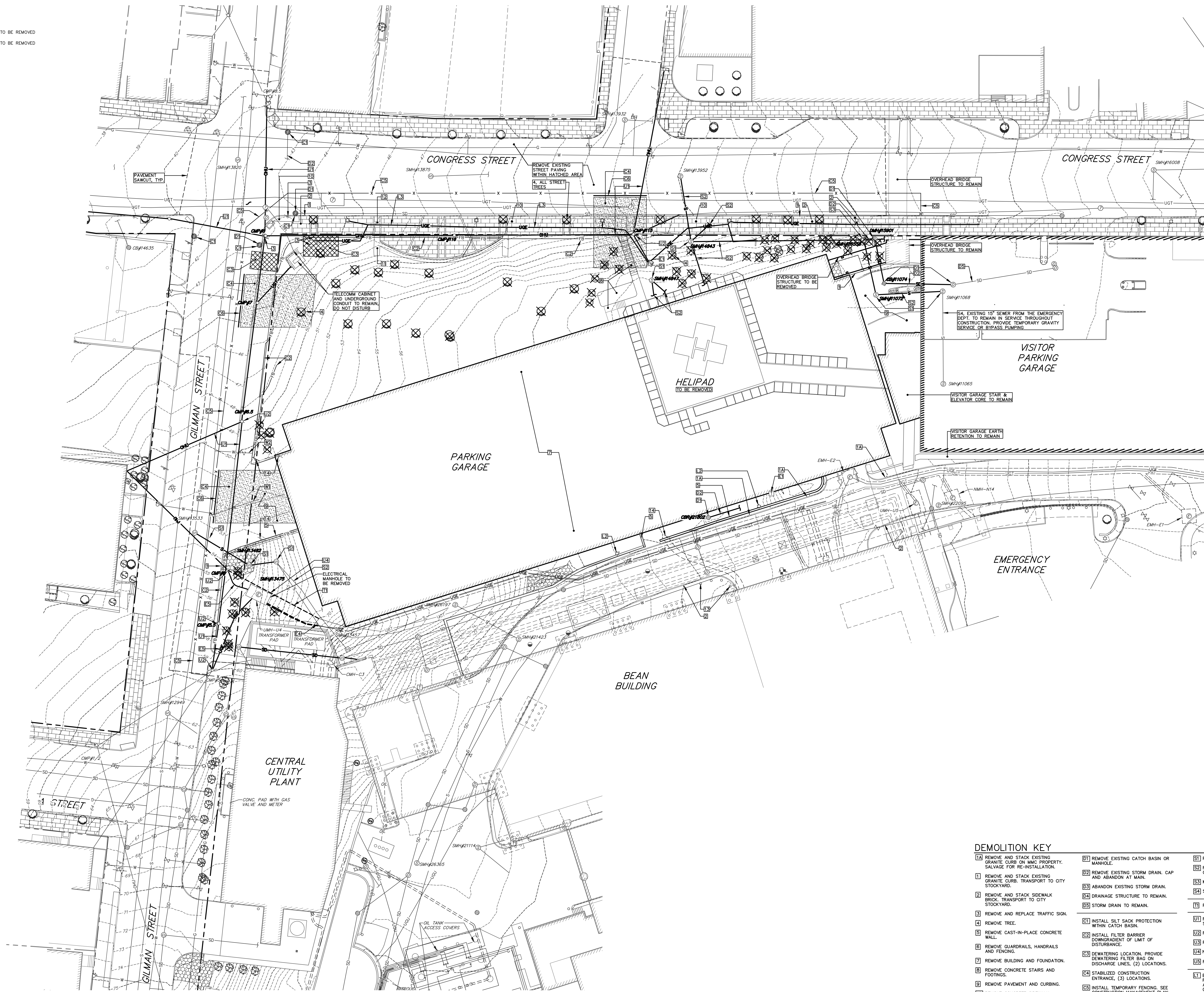
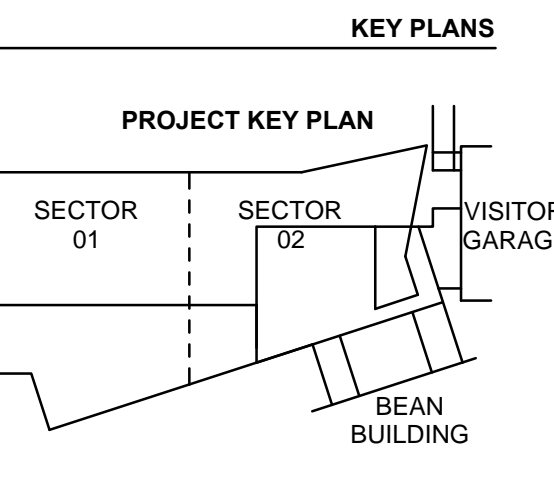
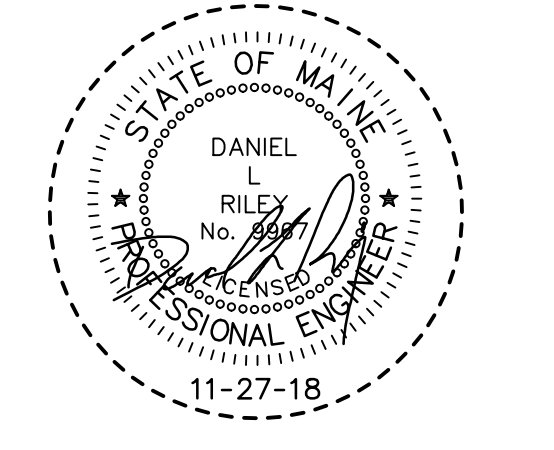


| EXISTING | DESCRIPTION | PROPOSED |
|----------|----------------------|-----------------|
| --- | PROPERTY LINE/R.O.W. | --- |
| --- | ABUTTER LINE/R.O.W. | --- |
| --- | BUILDING | --- |
| --- | EDGE PAVEMENT | --- |
| --- | PAVEMENT SAWCUT | --- |
| --- | EDGE CONCRETE | --- |
| --- | CURB LINE | --- |
| --- | CONTOURS | --- |
| --- | SPOT GRADE | --- |
| --- | RETAINING WALL | --- |
| --- | DEODOROUS TREE | ○ TO BE REMOVED |
| --- | CONIFEROUS TREE | ⊗ TO BE REMOVED |
| --- | SIGN | --- |
| --- | GAS | --- |
| --- | GAS GATE VALVE | --- |
| --- | GAS METER | --- |
| --- | GAS MANHOLE | --- |
| --- | WATER | --- |
| --- | WATER GATE VALVE | --- |
| --- | WATER SHUT OFF | --- |
| --- | HYDRANT | --- |
| --- | WATER MANHOLE | --- |
| --- | SANITARY SEWER | --- |
| --- | SANITARY MANHOLE | --- |
| --- | STORM DRAIN | --- |
| --- | UNDER DRAIN | --- |
| --- | DRAINAGE MANHOLE | --- |
| --- | CATCH BASIN | --- |
| --- | OVERHEAD UTILITY | --- |
| --- | UNDERGROUND UTILITY | --- |
| --- | TRANSFORMER PAD | --- |
| --- | ELECTRICAL MANHOLE | --- |
| --- | TELEPHONE MANHOLE | --- |
| --- | LIGHT POLE | --- |
| --- | UTILITY POLE | --- |
| --- | CITY WIRE | --- |
| --- | RIPRAP | --- |
| --- | INLET PROTECTION | --- |



DEMOLITION KEY

| | |
|---|---|
| <ul style="list-style-type: none"> 1 REMOVE AND STACK EXISTING GRANITE CURB ON MMC PROPERTY. SALVAGE FOR RE-INSTALLATION. 2 REMOVE AND STACK EXISTING GRANITE CURB. TRANSPORT TO CITY STOCKYARD. 3 REMOVE AND STACK SIDEWALK BROOK. TRANSPORT TO CITY STOCKYARD. 4 REMOVE AND REPLACE TRAFFIC SIGN. 5 REMOVE TREE. 6 REMOVE CAST-IN-PLACE CONCRETE AND FENCING. 7 REMOVE GUARDRAILS, HANDRAILS AND FENCING. 8 REMOVE BUILDING AND FOUNDATION. 9 REMOVE CONCRETE STAIRS AND FOOTINGS. 10 REMOVE PAVEMENT AND CURBING. 11 REMOVE CONCRETE SIDEWALK. 12 REMOVE AND STACK GRANITE SEAT WALL BLOBS. 13 REMOVE AND STACK GRANITE PAVERS AT TREE WELLS AND SIDEWALK. 14 REMOVE BOLLARDS. 15 RETIRE EXISTING 6" FIRE SERVICE. 16 RETIRE EXISTING 1" DOMESTIC SERVICE. | <ul style="list-style-type: none"> 17 REMOVE EXISTING CATCH BASIN OR MANHOLE. 18 REMOVE EXISTING STORM DRAIN. CAP AND ABANDON AT MAIN. 19 ABANDON EXISTING STORM DRAIN. 20 BRANCH STRUCTURE TO REMAIN. 21 STORM DRAIN TO REMAIN. 22 INSTALL SILT SACK PROTECTION WITHIN CATCH BASIN. 23 INSTALL FILTER BARRIER DOWNSTREAM OF LIMIT OF DISTURBANCE. 24 DEWATERING LOCATION. PROVIDE DEWATERING FILTER BAG ON DISCHARGE LINES. (2) LOCATIONS. 25 STABILIZED CONSTRUCTION ENTRANCE. (2) LOCATIONS. 26 INSTALL TEMPORARY FENCING. SEE CONSTRUCTION MANAGEMENT PLAN. TYP. GILMAN AND CONGRESS ST. 27 30' ROLLING GATE. TYP. (3) LOCATIONS. SEE CONSTRUCTION MANAGEMENT PLAN. 28 REMOVE EXISTING 6" FIRE SERVICE. 29 REMOVE EXISTING 1" DOMESTIC SERVICE. 30 REMOVE SANITARY MANHOLE. 31 REMOVE EXISTING SANITARY SEWER. CAP AND ABANDON AT MAIN. 32 MODIFY SEWER MANHOLE TO REMAIN. 33 SANITARY SEWER TO REMAIN. 34 REMOVE MMC TELECOMM CONDUIT. 35 REMOVE OVERHEAD UTILITIES AND SERVICES. 36 REMOVE UTILITY POLE AND GUY. 37 REPLACE UTILITY POLE AND GUY. 38 NOT USED. 39 REMOVE A/C UNIT. 40 EXISTING STREET LIGHTING TO REMAIN. REMOVE, STORE AND RESET AS REQUIRED FOR NEW CONSTRUCTION. 41 REMOVE STREET LIGHT AND BASE. 42 UNDERGROUND LIGHTING CONDUIT TO REMAIN. 43 REMOVE & REPLACE ELECTRICAL METER AND SERVICE FOR STREET LIGHTING. 44 REMOVE ELECTRICAL/TELECOMM SERVICE ENTRANCES. 45 REMOVE ELECTRICAL MANHOLE. 46 REMOVE ELECTRICAL DUCT BANK TO CUT IN LOCATION. SEE SHEET 011-01. 47 REMOVE ELECTRICAL CONDUIT/DUCT BANK POLE #5 TO MANHOLE. |
|---|---|



RESUBMIT TO CITY
 NOVEMBER 27, 2016

| NO. | ISSUE | DATE |
|------------|------------|------|
| Job Number | 152189.000 | |
| Drawn | MAL/AMM | |
| Checked | DLR | |
| Approved | DLR | |

TITLE
DEMOLITION PLAN
CONGRESS STREET
EXPANSION

SHEET NUMBER
C04-01