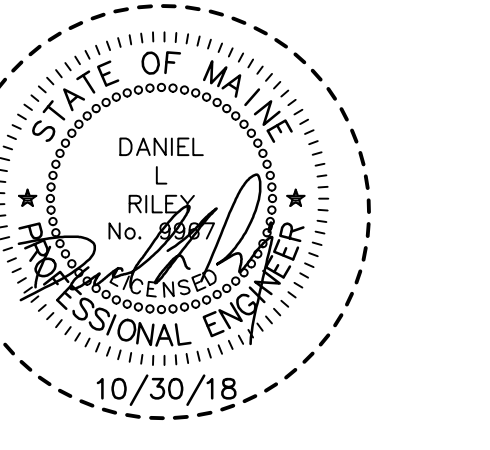


CONSULTANTS

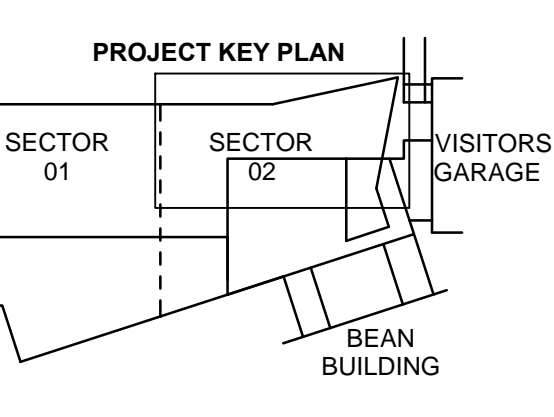
- CIVIL/LANDSCAPE ARCHITECT  
**Sebago Technics Inc.**  
75 John Roberts Road, Suite 1A,  
South Portland, ME 04106
- STRUCTURAL/ENGR. BUILDING ENVELOPE CONSULTANT  
**Simpson Gumpertz & Heger Inc.**  
41 Seyon Street, Building 1, Suite 500,  
Waltham, MA 02453
- MEFP ENGINEER/LOW VOLTAGE  
**AKF Group LLC**  
99 Bedford Street, 2nd Floor, Boston, MA 02111
- CONSTRUCTION MANAGER  
**TURNER CONSTRUCTION**  
2 Seaport Lane, Suite 200, Boston, MA 02210
- ELEVATOR CONSULTANT  
**VDA (Van Dusen & Associates)**  
101 Summer Street, 4th Floor, Boston, MA 02110
- COST ESTIMATOR  
**D.G. Jones International**  
3 Baldwin Green Common, Suite 202, Woburn, MA 01801
- MEDICAL EQUIPMENT PLANNING  
**Mitchell Planning**  
630 Dundee Road, Suite 340, Northbrook IL 60062

PROJECT TITLE

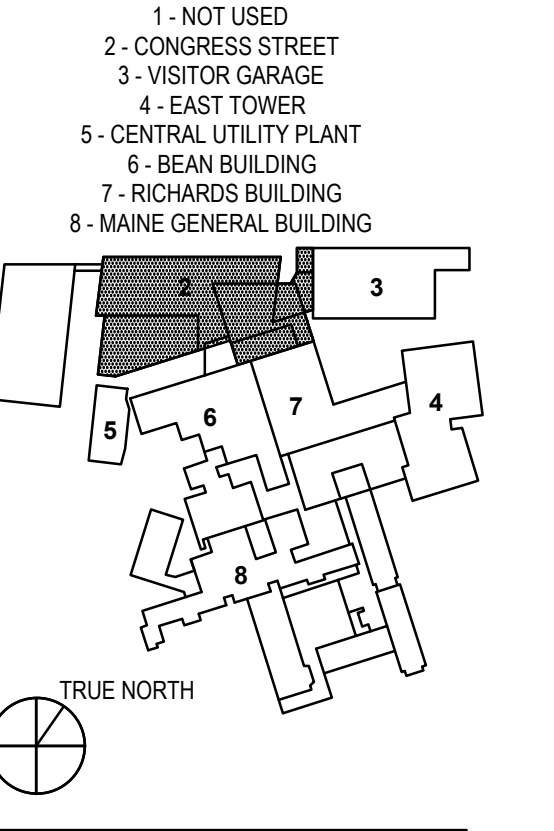
**Congress Street Building**  
22 Bramhall Street  
Portland ME 04102



KEY PLANS



OVERALL KEY PLAN



CITY SUBMITTAL NO. 2  
OCTOBER 30, 2018

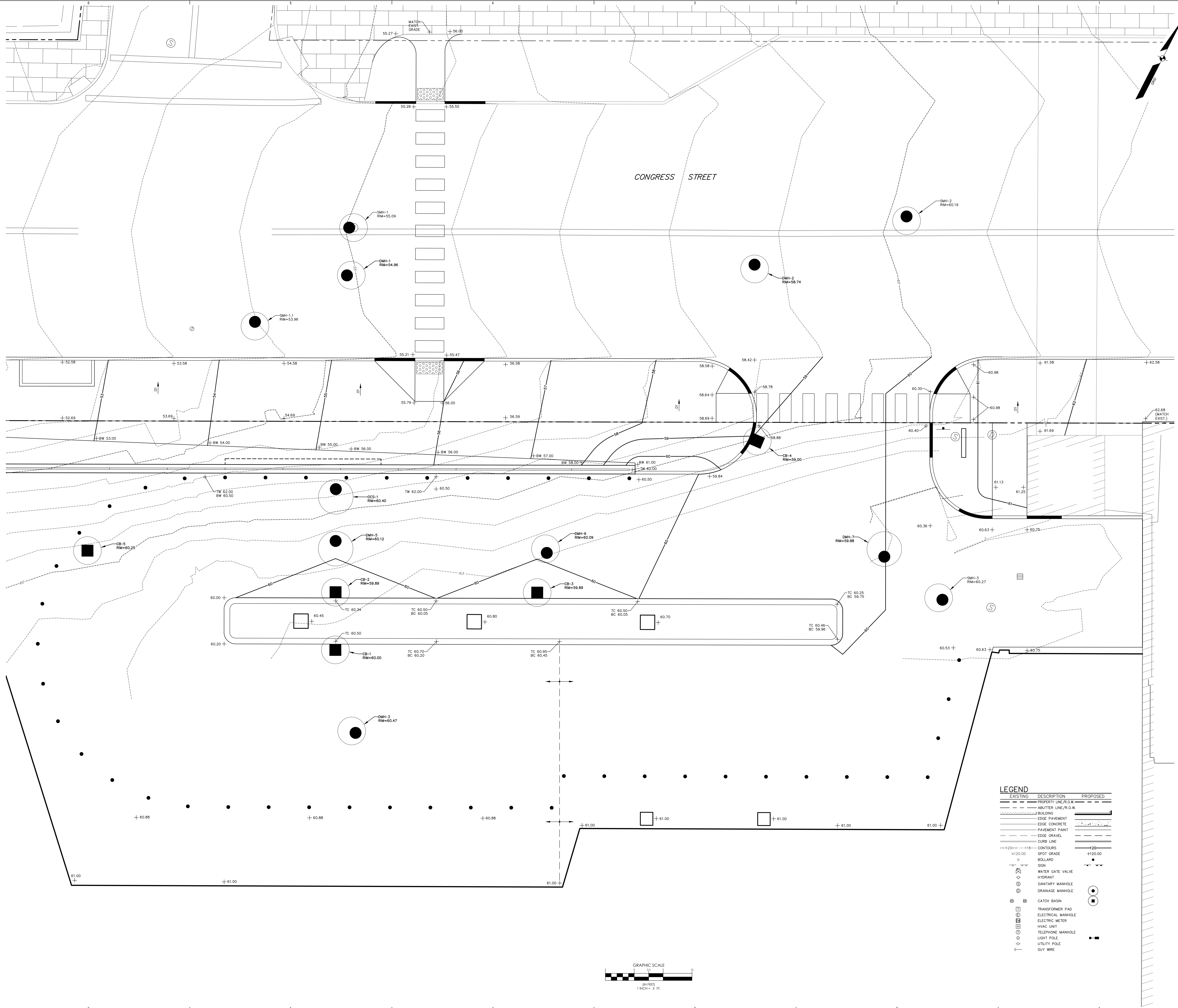
NO.	CITY SUBMITTAL ISSUE	10/30/2018 DATE
2	CITY SUBMITTAL	10/30/2018

Job Number 152189.000  
Drawn MAL  
Checked WTC  
Approved DLR

TITLE  
**GRADING PLAN**  
**UPPER**  
**CONGRESS STREET**  
**EXPANSION**

SHEET NUMBER

**C40-01**



**LEGEND**

EXISTING	DESCRIPTION	PROPOSED
---	PROPERTY LINE/R.O.W.	---
---	ADJUTER LINE/R.O.W.	---
---	BUILDING	---
---	EDGE PAVEMENT	---
---	EDGE CONCRETE	---
---	PAVEMENT PAINT	---
---	EDGE GRAVEL	---
---	CURB LINE	---
---	CONTOURS	---
o	SPOT GRADE	o
o	BOLLARD	o
o	SIGN	o
o	WATER GATE VALVE	o
o	HYDRANT	o
o	SANITARY MANHOLE	o
o	DRAINAGE MANHOLE	o
o	CATCH BASIN	o
o	TRANSFORMER PAD	o
o	ELECTRICAL MANHOLE	o
o	ELECTRIC METER	o
o	HVAC UNIT	o
o	TELEPHONE MANHOLE	o
o	LIGHT POLE	o
o	UTILITY POLE	o
o	GUY WIRE	o

