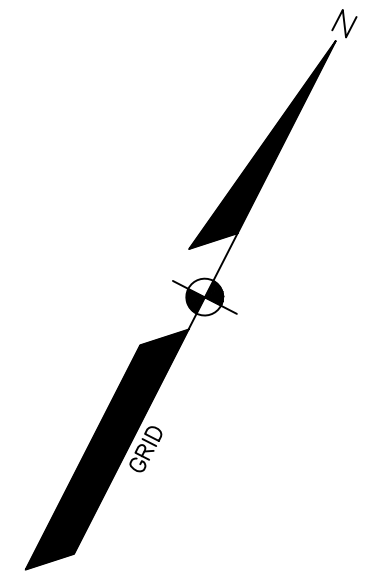
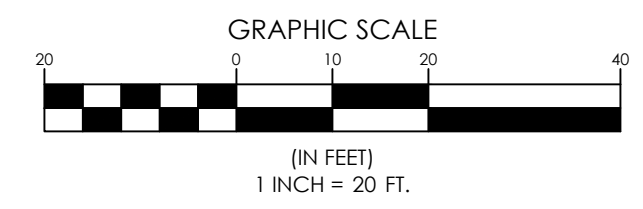
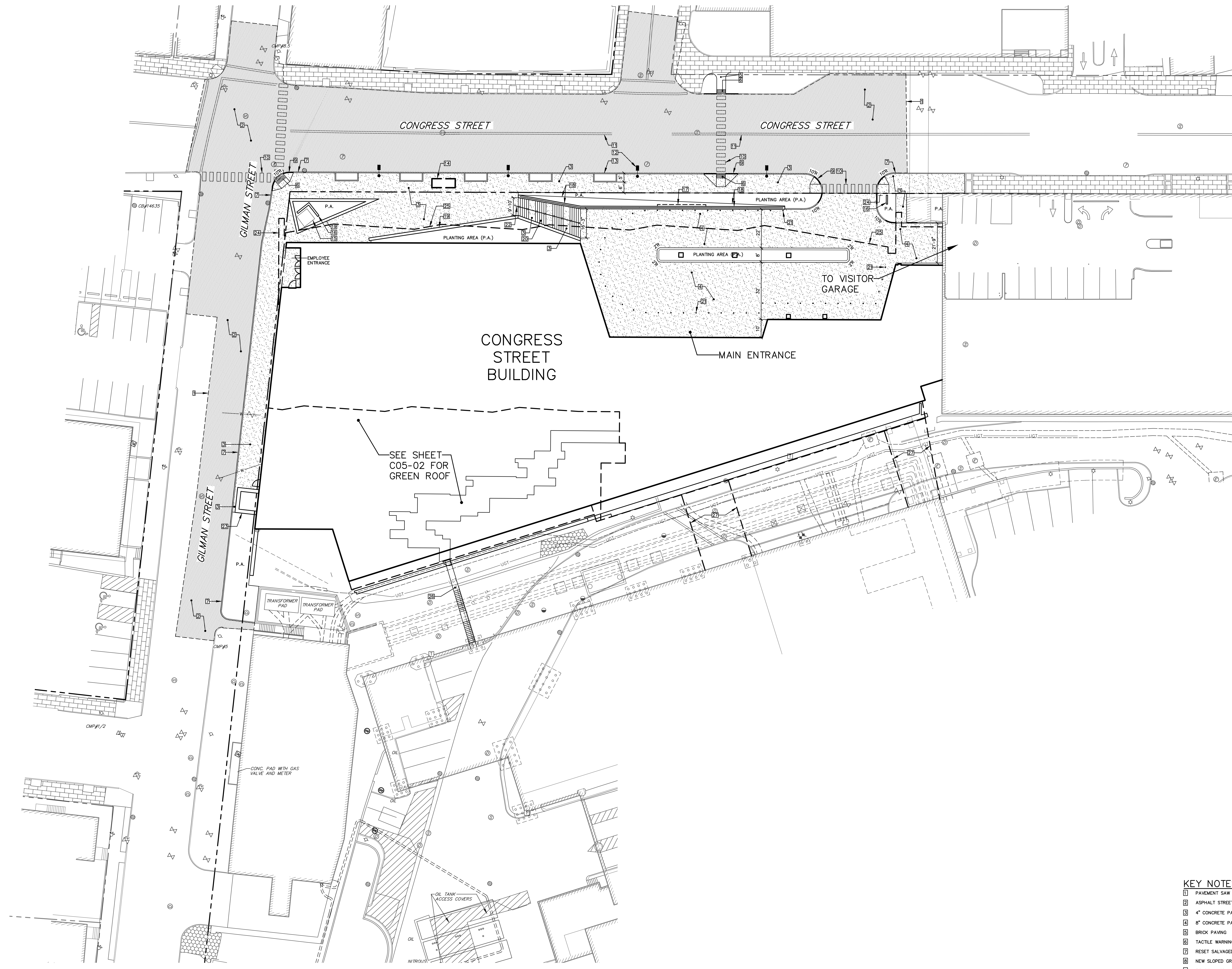


EXISTING	DESCRIPTION	PROPOSED
	PROPERTY LINE/R.O.W.	
	ABUTTER LINE/R.O.W.	
	BUILDING	
	EDGE PAVEMENT	
	PAVEMENT SAWCUT	
	EDGE CONCRETE	
	CURB LINE	
	SIGN	
	GAS GATE VALVE	
	GAS METER	
	GAS MANHOLE	
	WATER GATE VALVE	
	WATER SHUT OFF	
	HYDRANT	
	WATER MANHOLE	
	SANITARY MANHOLE	
	DRAINAGE MANHOLE	
	CATCH BASIN	
	TRANSFORMER PAD	
	ELECTRICAL MANHOLE	
	TELEPHONE MANHOLE	
	LIGHT POLE	
	UTILITY POLE	
	GUY WIRE	



PERKINS + WILL

225 Franklin Street, Suite 1100
Boston, MA 02110
617.439.0300
617.478.0321
www.perkinswill.com

CLIENT



Maine Medical Center
22 Bramhall Street
Portland, ME 04102

CONSULTANTS

CIVIL/LANDSCAPE ARCHITECT
Sebago Technics Inc.
75 John Roberts Road, Suite 1A,
South Portland, ME 04106

STRUCTURAL ENGR. BUILDING ENVELOPE CONSULTANT
Simpson Gumpertz & Heger Inc.
41 Seyon Street, Building 1, Suite 500,
Waltham, MA 02453

WEPP ENGINEER/CONSULTANT
AKF Group LLC
99 Bedford Street, 2nd Floor, Boston, MA 02111

CONSTRUCTION MANAGER
TURNER CONSTRUCTION
2 Seaport Lane, Suite 200, Boston, MA 02210

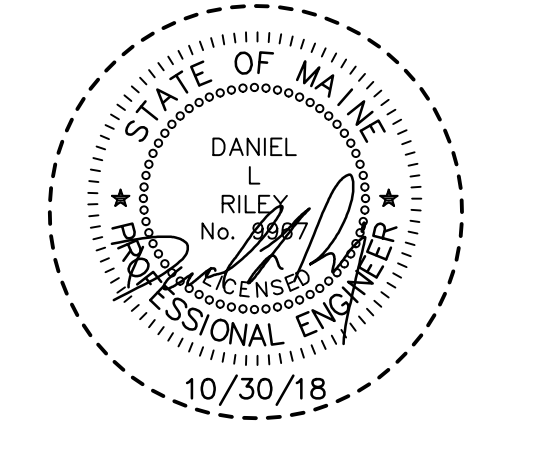
ELEVATOR CONSULTANT
VDA (Van Deusen & Associates)
101 Summer Street, 4th Floor, Boston, MA 02110

COST ESTIMATOR
D.G. Jones International
3 Baldwin Green Common, Suite 202, Woburn, MA 01801

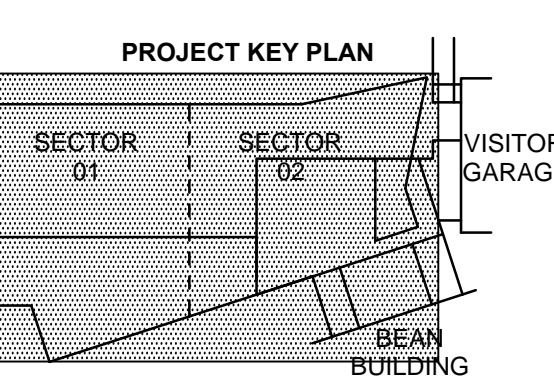
MEDICAL EQUIPMENT PLANNING
Mitchell Planning
630 Dundee Road, Suite 340, Northbrook, IL 60062

PROJECT TITLE

Congress Street Building
22 Bramhall Street
Portland ME 04102

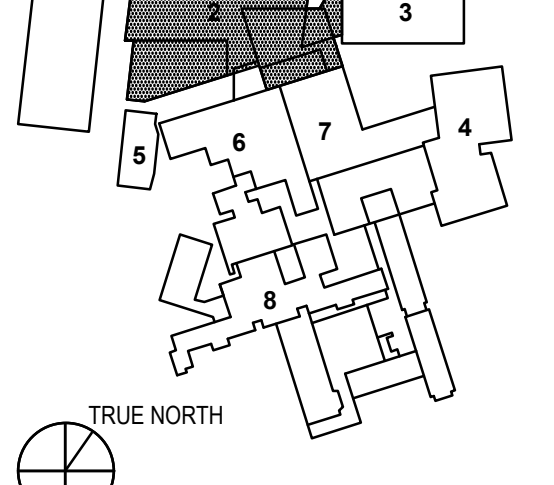


KEY PLANS



OVERALL KEY PLAN

- 1 - NOT USED
- 2 - CONGRESS STREET
- 3 - VISITOR GARAGE
- 4 - EAST TOWER
- 5 - CENTRAL UTILITY PLANT
- 6 - BEAN BUILDING
- 7 - RICHARDS BUILDING
- 8 - MAINE GENERAL BUILDING



CITY SUBMITTAL NO. 2
OCTOBER 30, 2018

NO.	CITY SUBMITTAL	DATE
2	CITY SUBMITTAL	10/30/2018

Job Number	152189.000
Drawn	MAL
Checked	WTC
Approved	DLR

TITLE
**SITE PLAN
MAIN ENTRANCE
CONGRESS STREET
EXPANSION**

SHEET NUMBER
C05-01