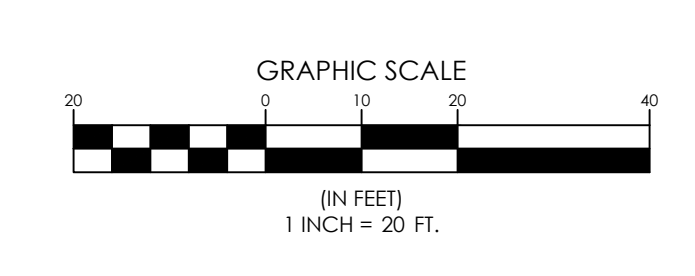
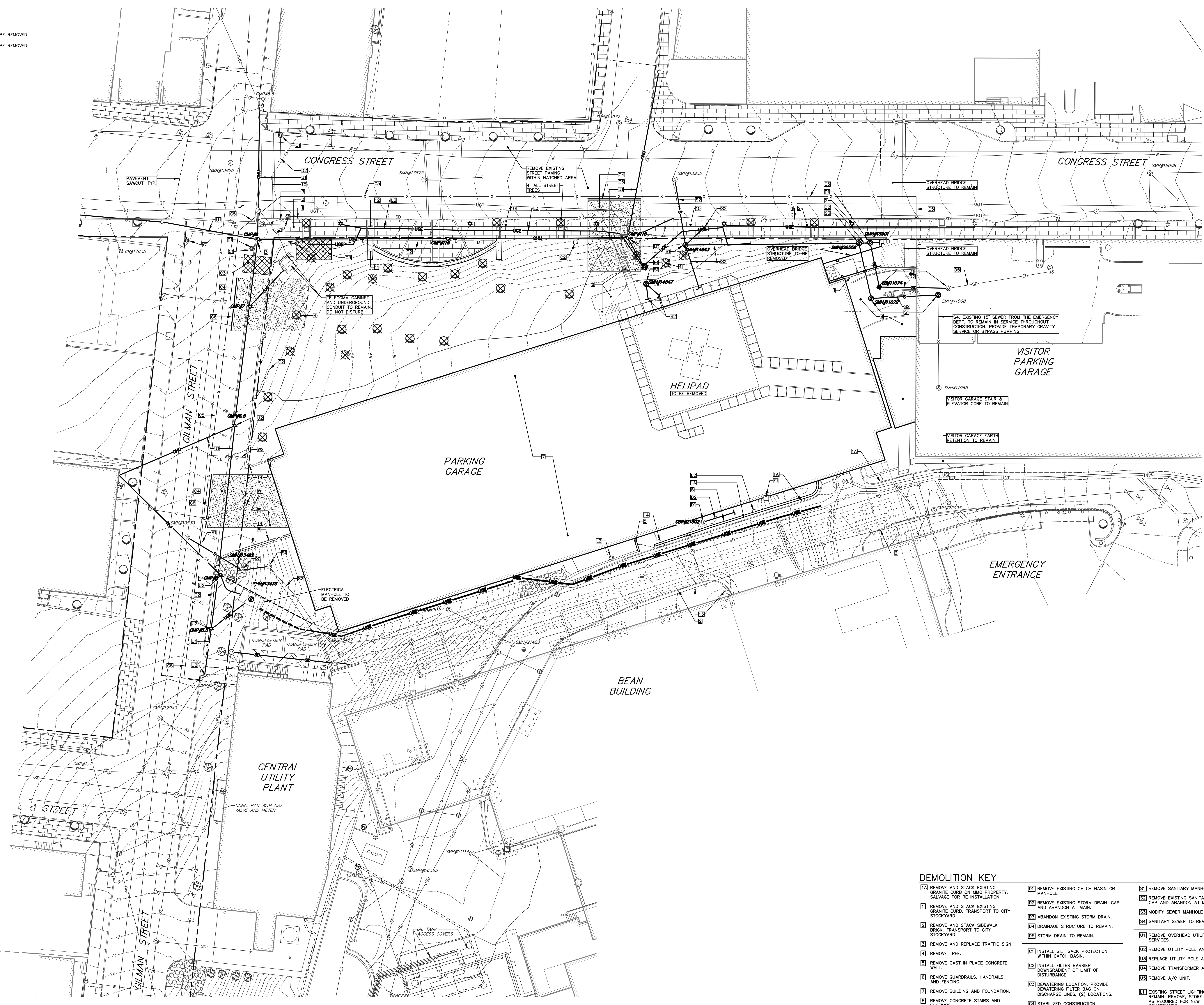


NO.	CITY SUBMITTAL	ISSUE	DATE
2	CITY SUBMITTAL	19302018	

Job Number: 152189.000
Drawn: MAL/AMM
Checked: DLR
Approved: DLR

LEGEND

EXISTING	DESCRIPTION	PROPOSED
---	PROPERTY LINE/R.O.W.	---
---	ABUTTER LINE/R.O.W.	---
---	BUILDING	---
---	EDGE PAVEMENT	---
---	PAVEMENT SAWCUT	---
---	EDGE CONCRETE	---
---	CURB LINE	---
---	CONTOURS	---
---	SPOT GRADE	---
---	RETAINING WALL	---
---	DECIDUOUS TREE	○ TO BE REMOVED
---	CONIFEROUS TREE	⊗ TO BE REMOVED
---	SIGN	---
---	GAS	---
---	GAS GATE VALVE	---
---	GAS METER	---
---	GAS MANHOLE	---
---	WATER	---
---	WATER GATE VALVE	---
---	WATER SHUT OFF	---
---	HYDRANT	---
---	WATER MANHOLE	---
---	SANITARY SEWER	---
---	SANITARY MANHOLE	---
---	STORM DRAIN	---
---	UNDER DRAIN	---
---	DRAINAGE MANHOLE	---
---	CATCH BASIN	---
---	OVERHEAD UTILITY	---
---	UNDERGROUND UTILITY	---
---	TRANSFORMER PAD	---
---	ELECTRICAL MANHOLE	---
---	TELEPHONE MANHOLE	---
---	LIGHT POLE	---
---	UTILITY POLE	---
---	CUT WIRE	---
---	RIPRAP	---
---	INLET PROTECTION	---



- DEMOLITION KEY**
- | | | |
|---|---|--|
| [1A] REMOVE AND STACK EXISTING GRANITE CURB ON MMC PROPERTY. SALVAGE FOR RE-INSTALLATION. | [31] REMOVE EXISTING CATCH BASIN OR MANHOLE. | [51] REMOVE SANITARY MANHOLE. |
| [1] REMOVE AND STACK EXISTING GRANITE CURB. TRANSPORT TO CITY STOCKYARD. | [32] REMOVE EXISTING STORM DRAIN. CAP AND ABANDON AT MAIN. | [52] REMOVE EXISTING SANITARY SEWER. CAP AND ABANDON AT MAIN. |
| [2] REMOVE AND STACK SIDEWALK BRICK. TRANSPORT TO CITY STOCKYARD. | [33] ABANDON EXISTING STORM DRAIN. | [53] MODIFY SEWER MANHOLE TO REMAIN. |
| [3] REMOVE AND REPLACE TRAFFIC SIGN. | [34] DRAINAGE STRUCTURE TO REMAIN. | [54] SANITARY SEWER TO REMAIN. |
| [4] REMOVE TREE. | [35] STORM DRAIN TO REMAIN. | [55] REMOVE OVERHEAD UTILITIES AND SERVICES. |
| [5] REMOVE CAST-IN-PLACE CONCRETE WALL. | [36] INSTALL SILT SACK PROTECTION WITHIN CATCH BASIN. | [56] REMOVE UTILITY POLE AND GUY. |
| [6] REMOVE GUARDRAILS, HANDRAILS AND FENCING. | [37] DEWATERING LOCATION. PROVIDE DEWATERING FILTER BAG ON DISCHARGE LINES. (2) LOCATIONS. | [57] REPLACE UTILITY POLE AND GUY. |
| [7] REMOVE BUILDING AND FOUNDATION. | [38] STABILIZED CONSTRUCTION ENTRANCE. (3) LOCATIONS. | [58] REMOVE TRANSFORMER AND PAD. |
| [8] REMOVE CONCRETE STAIRS AND FOOTINGS. | [39] INSTALL TEMPORARY FENCING. SEE CONSTRUCTION MANAGEMENT PLAN, TYP., GILMAN AND CONGRESS ST. | [59] REMOVE A/C UNIT. |
| [9] REMOVE PAVEMENT AND CURBING. | [40] 30' ROLLING GATE. TYP. (3) LOCATIONS. SEE CONSTRUCTION MANAGEMENT PLAN. | [61] EXISTING STREET LIGHTING TO REMAIN. REMOVE, STORE AND RESET AS REQUIRED FOR NEW CONSTRUCTION. |
| [10] REMOVE CONCRETE SIDEWALK. | [41] REMOVE EXISTING 6" FIRE SERVICE. | [62] REMOVE STREET LIGHT AND BASE. |
| [11] REMOVE AND STACK GRANITE SEAT WALL BLOCKS. | [42] REMOVE EXISTING 1" DOMESTIC SERVICE. | [63] UNDERGROUND LIGHTING CONDUIT TO REMAIN. |
| [12] REMOVE AND STACK GRANITE PAVERS AT TREE WELLS AND SIDEWALK. | | [64] REMOVE ELECTRICAL/TELECOMM SERVICE ENTRANCES. |
| [13] REMOVE BOLLARDS. | | [65] REMOVE ELECTRICAL MANHOLE. |
| | | [66] REMOVE ELECTRICAL DUCT BANK TO CUT IN LOCATION. SEE SHEET CH-01. |