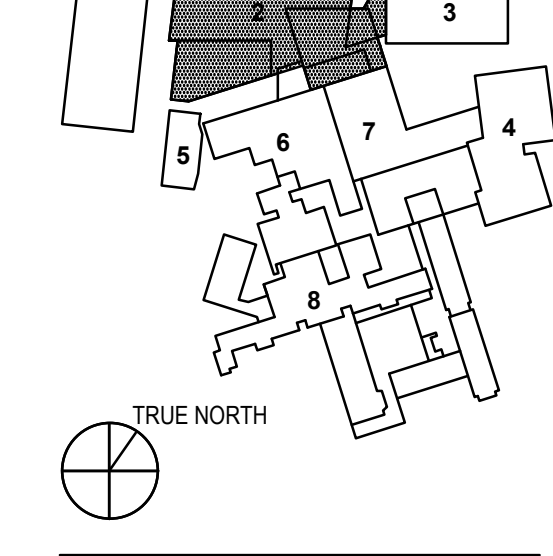


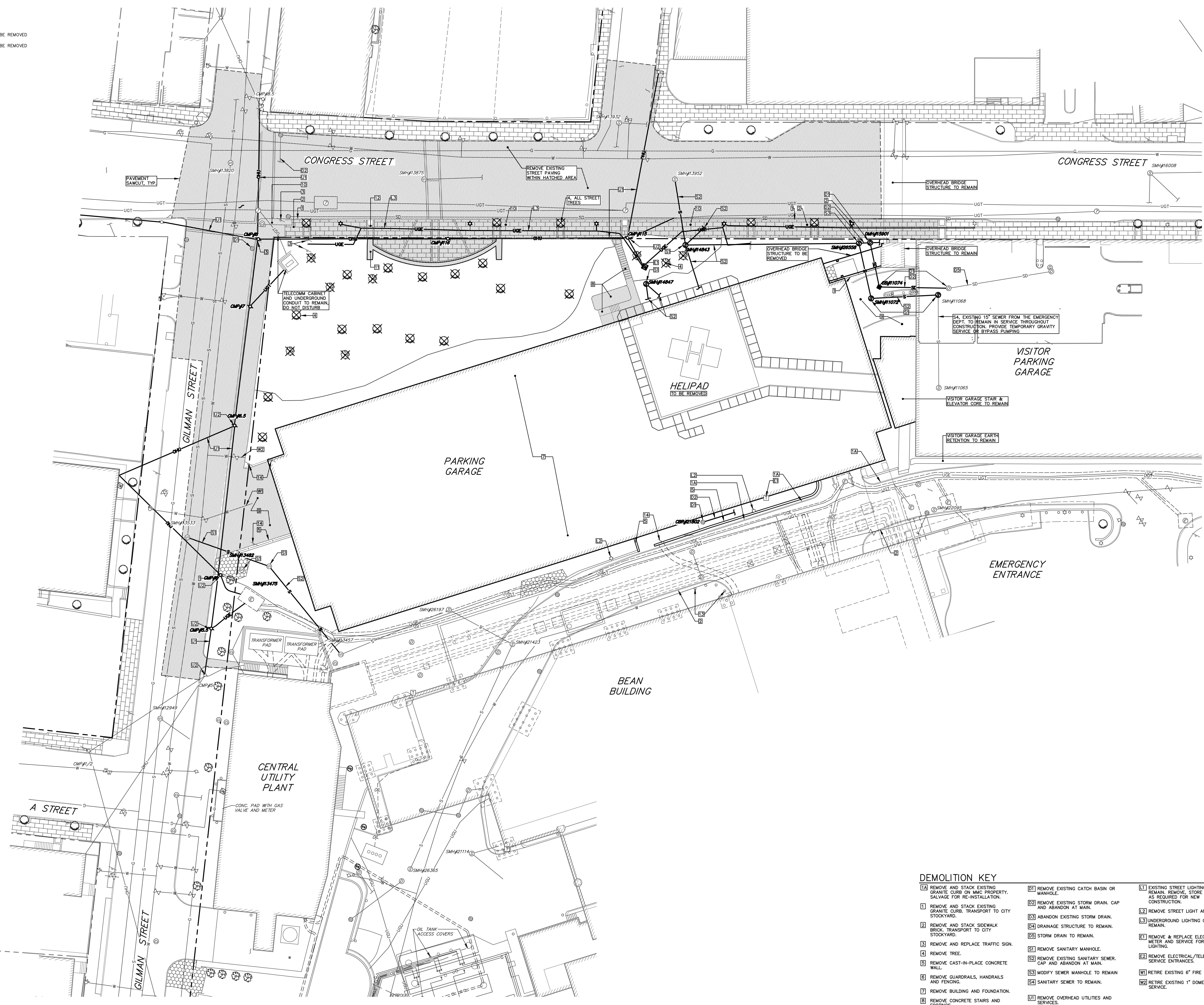
- 1 - NOT USED
- 2 - CONGRESS STREET
- 3 - VISITOR GARAGE
- 4 - EAST TOWER
- 5 - CENTRAL UTILITY PLANT
- 6 - BEAN BUILDING
- 7 - RICHARDS BUILDING
- 8 - MAINE GENERAL BUILDING



NO.	CITY SUBMISSION	DATE
1	CITY SUBMISSION	9/25/2018
ISSUE	DATE	
Job Number	152189.000	
Drawn	MAL/AMM	
Checked	DLR	
Approved	DLR	

LEGEND

EXISTING	DESCRIPTION	PROPOSED
---	PROPERTY LINE/R.O.W.	---
---	ABUTTER LINE/R.O.W.	---
---	BUILDING	---
---	EDGE PAVEMENT	---
---	PAVEMENT SAWCUT	---
---	EDGE CONCRETE	---
---	CURB LINE	---
---	CONTOURS	---
---	SPOT GRADE	---
---	RETAINING WALL	---
---	DECIDUOUS TREE	○ TO BE REMOVED
---	CONIFEROUS TREE	⊗ TO BE REMOVED
---	SIGN	---
---	GAS	---
---	GAS GATE VALVE	---
---	GAS METER	---
---	GAS MANHOLE	---
---	WATER	---
---	WATER GATE VALVE	---
---	WATER SHUT OFF	---
---	HYDRANT	---
---	WATER MANHOLE	---
---	SANITARY SEWER	---
---	SANITARY MANHOLE	---
---	STORM DRAIN	---
---	UNDER DRAIN	---
---	DRAINAGE MANHOLE	---
---	CATCH BASIN	---
---	OVERHEAD UTILITY	---
---	UNDERGROUND UTILITY	---
---	TRANSFORMER PAD	---
---	ELECTRICAL MANHOLE	---
---	TELEPHONE MANHOLE	---
---	LIGHT POLE	---
---	UTILITY POLE	---
---	UTILITY POLE	---
---	RIPRAP	---
---	INLET PROTECTION	---



DEMOLITION KEY

[A] REMOVE AND STACK EXISTING GRANITE CURB ON MMC PROPERTY. SALVAGE FOR RE-INSTALLATION.	[G] REMOVE EXISTING CATCH BASIN OR MANHOLE.	[L] EXISTING STREET LIGHTING TO REMAIN. REMOVE, STORE AND RESET AS REQUIRED FOR NEW CONSTRUCTION.
[1] REMOVE AND STACK EXISTING GRANITE CURB. TRANSPORT TO CITY STOCKYARD.	[H] REMOVE EXISTING STORM DRAIN, CAP AND ABANDON AT MAIN.	[M] REMOVE STREET LIGHT AND BASE.
[2] REMOVE AND STACK SIDEWALK BRICK. TRANSPORT TO CITY STOCKYARD.	[I] ABANDON EXISTING STORM DRAIN.	[N] UNDERGROUND LIGHTING CONDUIT TO REMAIN.
[3] REMOVE AND REPLACE TRAFFIC SIGN.	[J] DRAINAGE STRUCTURE TO REMAIN.	[O] REMOVE & REPLACE ELECTRICAL, METER AND SERVICE FOR STREET LIGHTING.
[4] REMOVE TREE.	[K] STORM DRAIN TO REMAIN.	[P] REMOVE & REPLACE ELECTRICAL/TELECOMM SERVICE ENTRANCES.
[5] REMOVE CAST-IN-PLACE CONCRETE WALL.	[L] REMOVE SANITARY MANHOLE.	[Q] RETIRE EXISTING 6" FIRE SERVICE.
[6] REMOVE GUARDRAILS, HANDRAILS AND FENCING.	[M] REMOVE EXISTING SANITARY SEWER. CAP AND ABANDON AT MAIN.	[R] RETIRE EXISTING 1" DOMESTIC SERVICE.
[7] REMOVE BUILDING AND FOUNDATION.	[N] MODIFY SEWER MANHOLE TO REMAIN.	
[8] REMOVE CONCRETE STAIRS AND FOOTINGS.	[O] SANITARY SEWER TO REMAIN.	
[9] REMOVE PAVEMENT AND CURBING.	[P] REMOVE OVERHEAD UTILITIES AND SERVICES.	
[10] REMOVE CONCRETE SIDEWALK.	[Q] REMOVE UTILITY POLE AND GUY.	
[11] REMOVE AND STACK GRANITE SEAT WALL BLOCKS.	[R] REPLACE UTILITY POLE AND GUY.	
[12] REMOVE AND STACK GRANITE PAVERS AT TREE WELLS AND SIDEWALK.	[S] REMOVE TRANSFORMER AND PAD.	
[13] REMOVE BOLLARDS.	[T] REMOVE A/C UNIT.	

