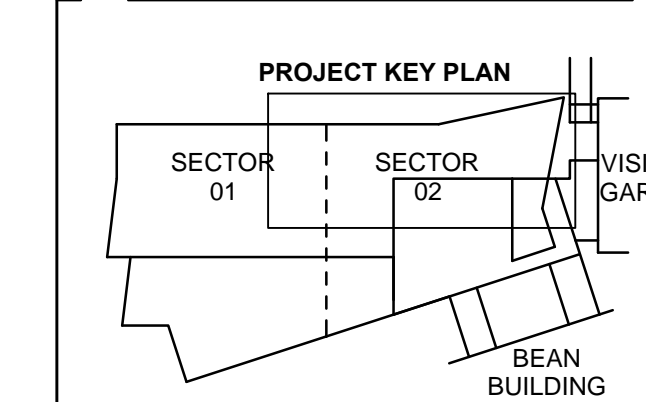
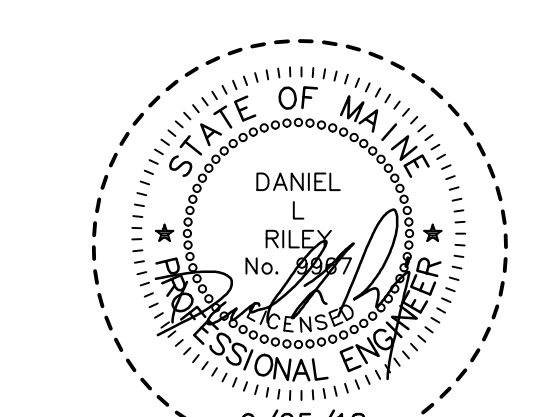
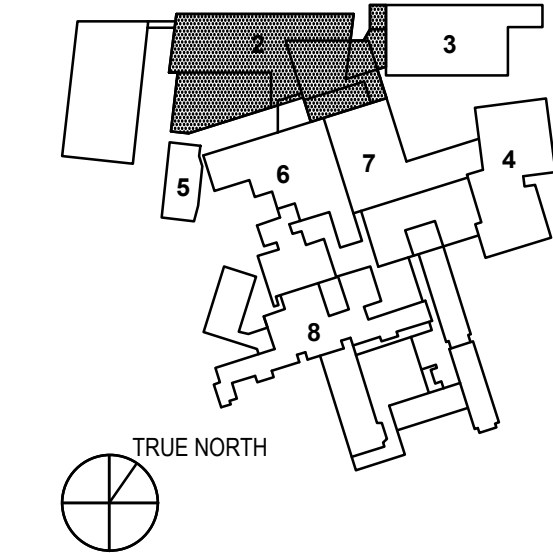


- CIVIL/LANDSCAPE ARCHITECT
Sebago Technics Inc.
75 John Roberts Road, Suite 1A,
 South Portland, ME 04106
- STRUCTURAL ENG. BUILDING ENVELOPE CONSULTANT
Simpson Gumpertz & Heger Inc.
41 Sevon Street, Building 1, Suite 500,
 Waltham, MA 02453
- WEPPY ENGINEER/CONSULTANT
AKF Group LLC
99 Bedford Street, 2nd Floor, Boston, MA 02111
- CONSTRUCTION MANAGER
TURNER CONSTRUCTION
2 Seaport Lane, Suite 205, Boston, MA 02210
- ELEVATOR CONSULTANT
VDA (Van Deusen & Associates)
101 Summer Street, 4th Floor, Boston, MA 02110
- COST ESTIMATOR
D.G. Jones International
3 Balcorn Green Common, Suite 202, Woburn, MA 01801
- MEDICAL EQUIPMENT PLANNING
Mitchell Planning
630 Dundee Road, Suite 340, Northbrook, IL 60062

Congress Street Building
22 Bramhall Street
Portland ME 04102

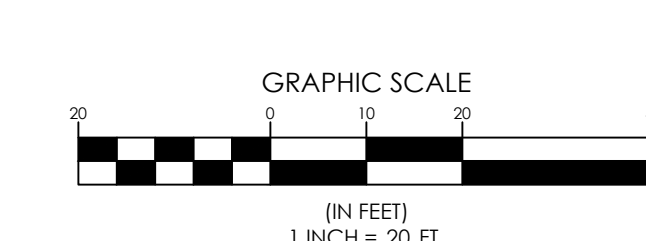
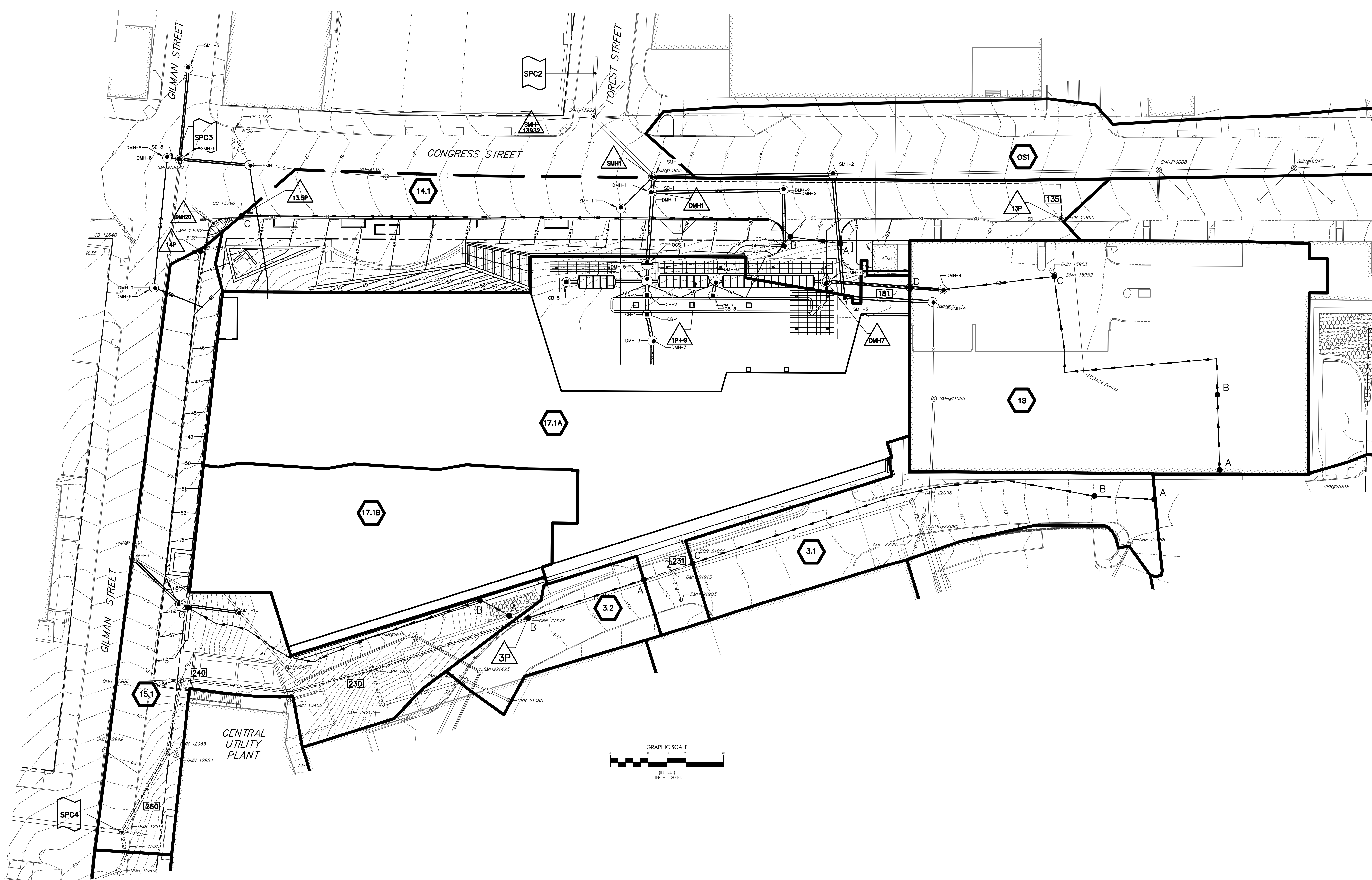
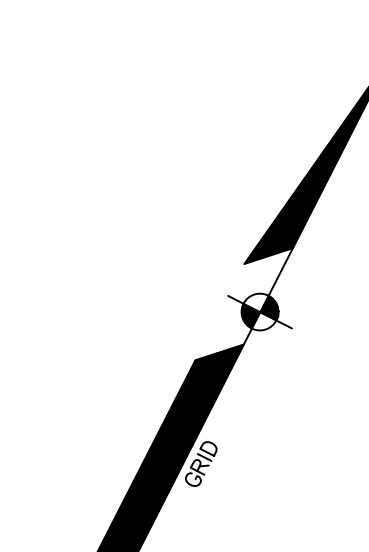


- 1 - NOT USED
- 2 - CONGRESS STREET
- 3 - VISITOR GARAGE
- 4 - EAST TOWER
- 5 - CENTRAL UTILITY PLANT
- 6 - BEAN BUILDING
- 7 - RICHARDS BUILDING
- 8 - MAINE GENERAL BUILDING



NO.	CITY SUBMISSION	ISSUE	DATE
1	CITY SUBMISSION	ISSUE	9/25/2018

Job Number: 152189.000
 Drawn: DJS
 Checked: WTC
 Approved: DLR



LEGEND

	WATERSHED BOUNDARY
	TIME OF CONCENTRATION
	REACH
	WATERSHED LABEL
	REACH
	DETENTION POND
	SOILS BOUNDARY