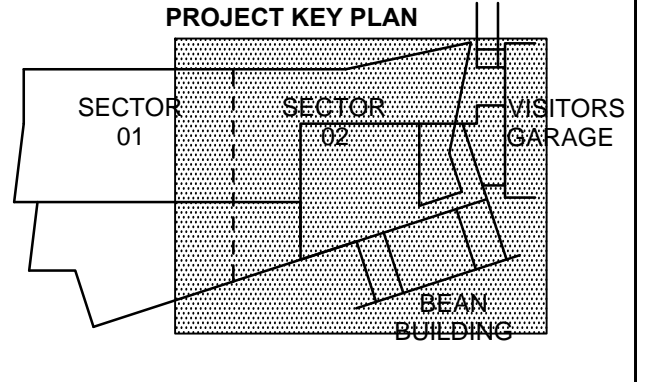
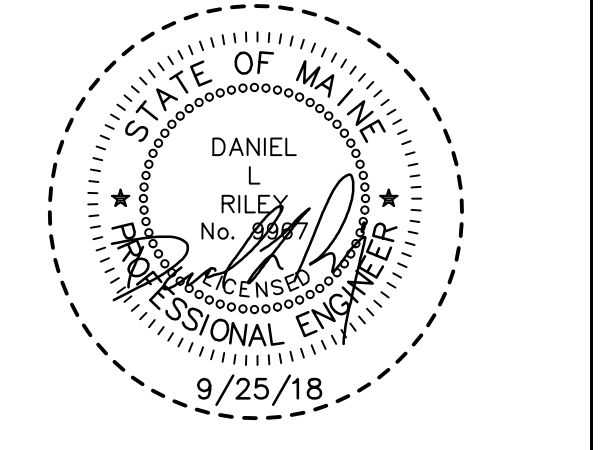




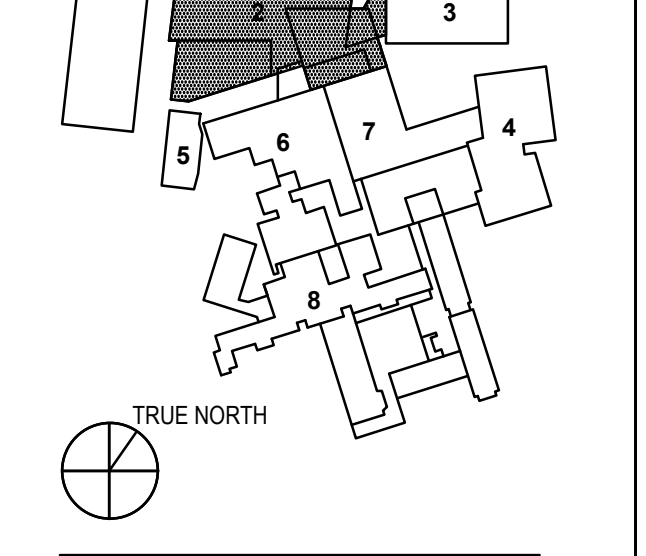
Maine Medical Center
22 Bramhall Street
Portland, ME 04102

- CIVIL/LANDSCAPE ARCHITECT
Sebago Technics Inc.
75 John Roberts Road, Suite 1A,
South Portland, ME 04106
- STRUCTURAL/ENGR. BUILDING ENVELOPE CONSULTANT
Simpson Gumpertz & Heger Inc.
41 Seyon Street, Building 1, Suite 600,
Waltham, MA 02453
- MEPP ENGINEER/CODELAW VIOLATOR
AKF Group LLC
99 Bedford Street, 2nd Floor, Boston, MA 02111
- CONSTRUCTION MANAGER
TURNER CONSTRUCTION
2 Seaport Lane, Suite 200, Boston, MA 02210
- ELEVATOR CONSULTANT
VDA (Van Deusen & Associates)
101 Summer Street, 4th Floor, Boston, MA 02110
- COST ESTIMATOR
D.G. Jones International
3 Baldwin Green Common, Suite 202, Woburn, MA 01801
- MEDICAL EQUIPMENT PLANNING
Mitchell Planning
630 Dundee Road, Suite 340, Northbrook, IL 60062

Congress Street Building
22 Bramhall Street
Portland ME 04102



- OVERALL KEY PLAN**
- 1 - NOT USED
 - 2 - CONGRESS STREET
 - 3 - VISITOR GARAGE
 - 4 - EAST TOWER
 - 5 - CENTRAL UTILITY PLANT
 - 6 - BEAN BUILDING
 - 7 - RICHARDS BUILDING
 - 8 - MAINE GENERAL BUILDING



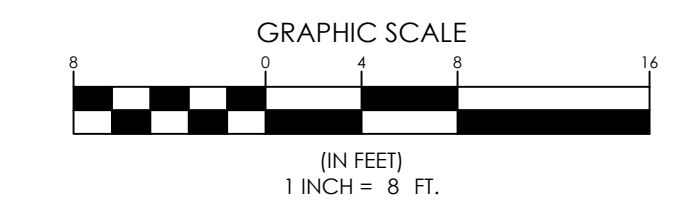
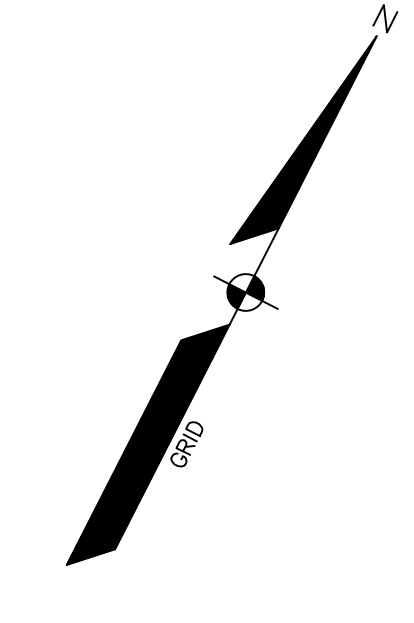
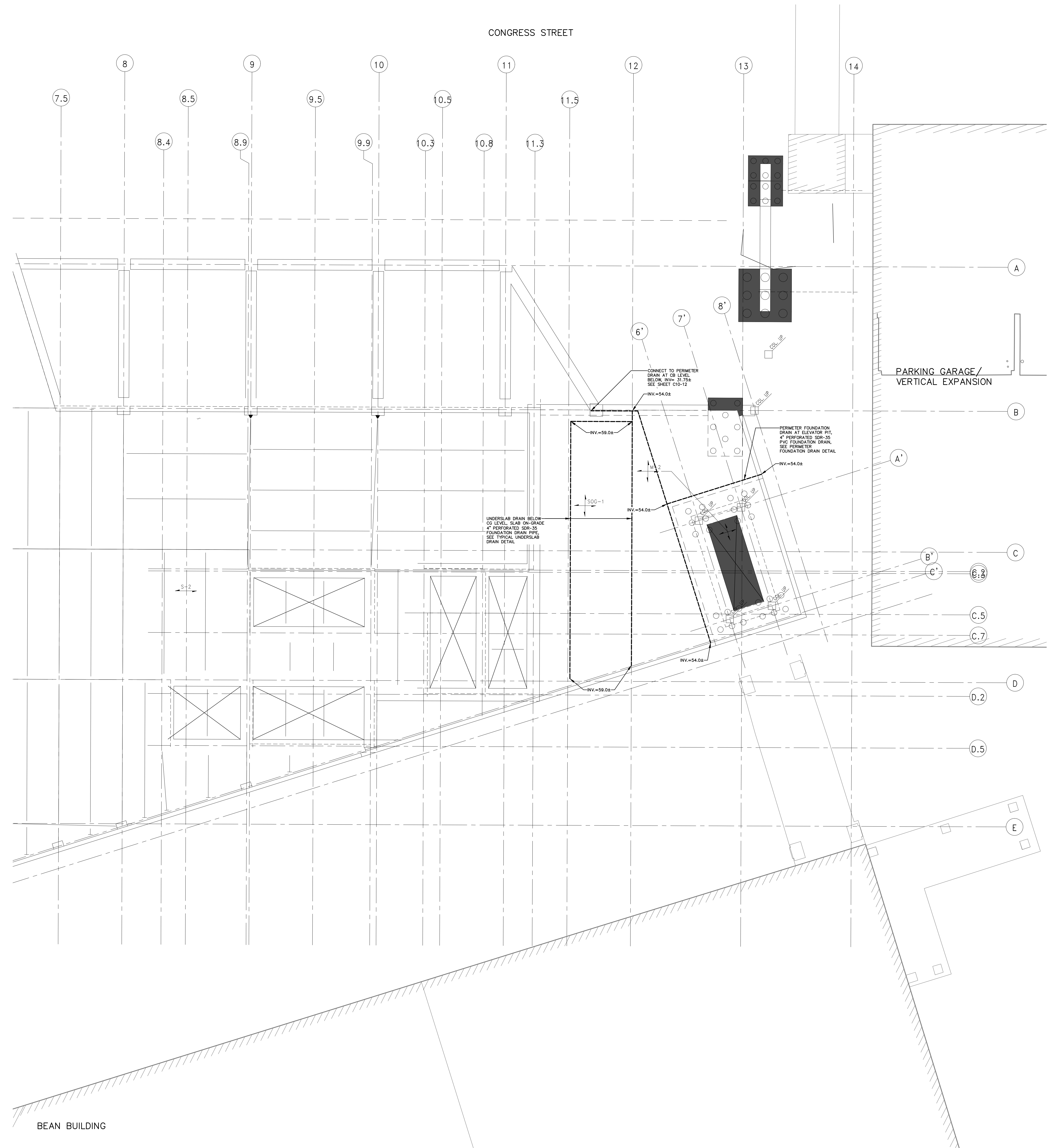
CITY SUBMISSION
SEPTEMBER 25, 2018

NO.	CITY SUBMISSION	ISSUE	DATE
1	CITY SUBMISSION		9/25/2018

Job Number 152189.000
Drawn MAL/AMM
Checked DLR
Approved DLR

TITLE
**LEVEL 1 FOUNDATION
DRAINAGE PLAN, SECTOR 2
CONGRESS STREET
EXPANSION**

C12-12



BEAN BUILDING