

EXISTING	DESCRIPTION	PROPOSED
---	PROPERTY LINE, R/O, W	---
---	ABUTTER LINE, R/O, W	---
---	BUILDING	---
---	EDGE PAVEMENT	---
---	EDGE CONCRETE	---
---	PAVEMENT PAINT	---
---	EDGE GRAVEL	---
---	CURB LINE	---
---	CONTOURS	---
---	SPOT GRADE	---
○	BOLLARD	●
+	SIGN	+
+	WATER GATE VALVE	+
+	HYDRANT	+
⊙	SANITARY MANHOLE	⊙
⊙	DRANAGE MANHOLE	⊙
⊙	CATCH BASIN	⊙
⊙	TRANSFORMER PAD	⊙
⊙	ELECTRICAL MANHOLE	⊙
⊙	ELECTRIC METER	⊙
⊙	HVAC UNIT	⊙
⊙	TELEPHONE MANHOLE	⊙
⊙	LIGHT POLE	⊙
⊙	UTILITY POLE	⊙
⊙	GUY WIRE	⊙

**PERKINS + WILL**

225 Franklin Street, Suite 1100  
Boston, MA 02110  
617.439.0300  
617.478.0321  
www.perkinswill.com

CLIENT



**Maine Medical Center**

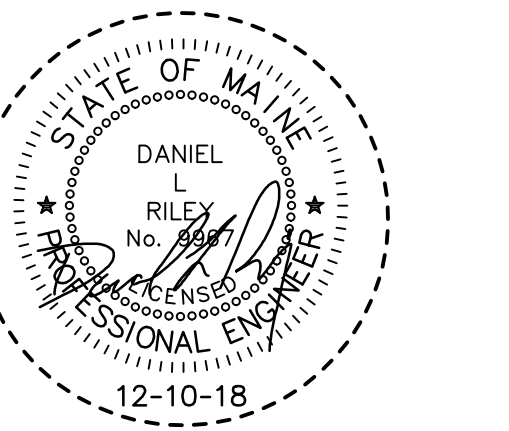
22 Bramhall Street  
Portland, ME 04102

CONSULTANTS

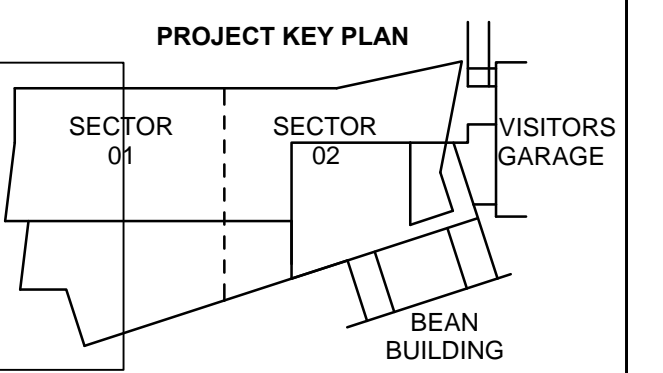
- CIVIL/LANDSCAPE ARCHITECT  
**Sebago Technics Inc.**  
75 John Roberts Road, Suite 1A,  
South Portland, ME 04106
- STRUCTURAL ENGR. BUILDING ENVELOPE CONSULTANT  
**Simpson Gumpertz & Heger Inc.**  
41 Seyon Street, Building 1, Suite 500,  
Waltham, MA 02453
- MEFP ENGINEER CODES/LOW VOLTAGE  
**AKF Group LLC**  
99 Bedford Street, 2nd Floor, Boston, MA 02111
- CONSTRUCTION MANAGER  
**TURNER CONSTRUCTION**  
2 Seaport Lane, Suite 200, Boston, MA 02210
- ELEVATOR CONSULTANT  
**VDA (Van Deusen & Associates)**  
101 Summer Street, 4th Floor, Boston, MA 02110
- COST ESTIMATOR  
**D.G. Jones International**  
3 Baldwin Green Common, Suite 202, Woburn, MA 01801
- MEDICAL EQUIPMENT PLANNING  
**Mitchell Planning**  
630 Dundee Road, Suite 340, Northbrook, IL 60062

PROJECT TITLE

**Congress Street Building**  
22 Bramhall Street  
Portland ME 04102

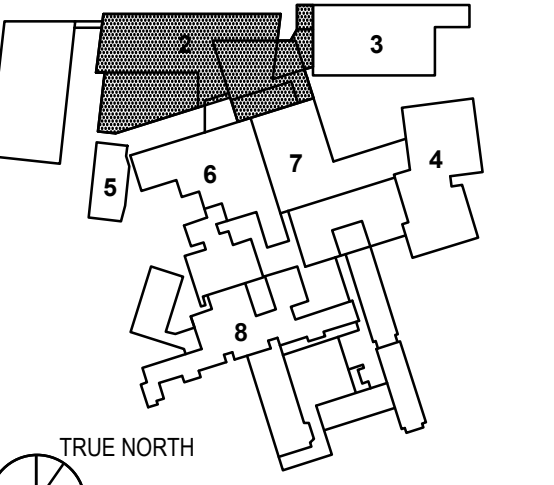


KEY PLANS



OVERALL KEY PLAN

- 1 - NOT USED
- 2 - CONGRESS STREET
- 3 - VISITOR GARAGE
- 4 - EAST TOWER
- 5 - CENTRAL UTILITY PLANT
- 6 - BEAN BUILDING
- 7 - RICHARDS BUILDING
- 8 - MAINE GENERAL BUILDING



RESUBMIT TO CITY  
DECEMBER 10, 2018

NO.	ISSUE	DATE
Job Number	152189.000	
Drawn	MAL	
Checked	WTC	
Approved	DLR	

TITLE  
**GRADING PLAN,  
GILMAN STREET,  
CONGRESS STREET  
EXPANSION**

SHEET NUMBER

**C40-03**