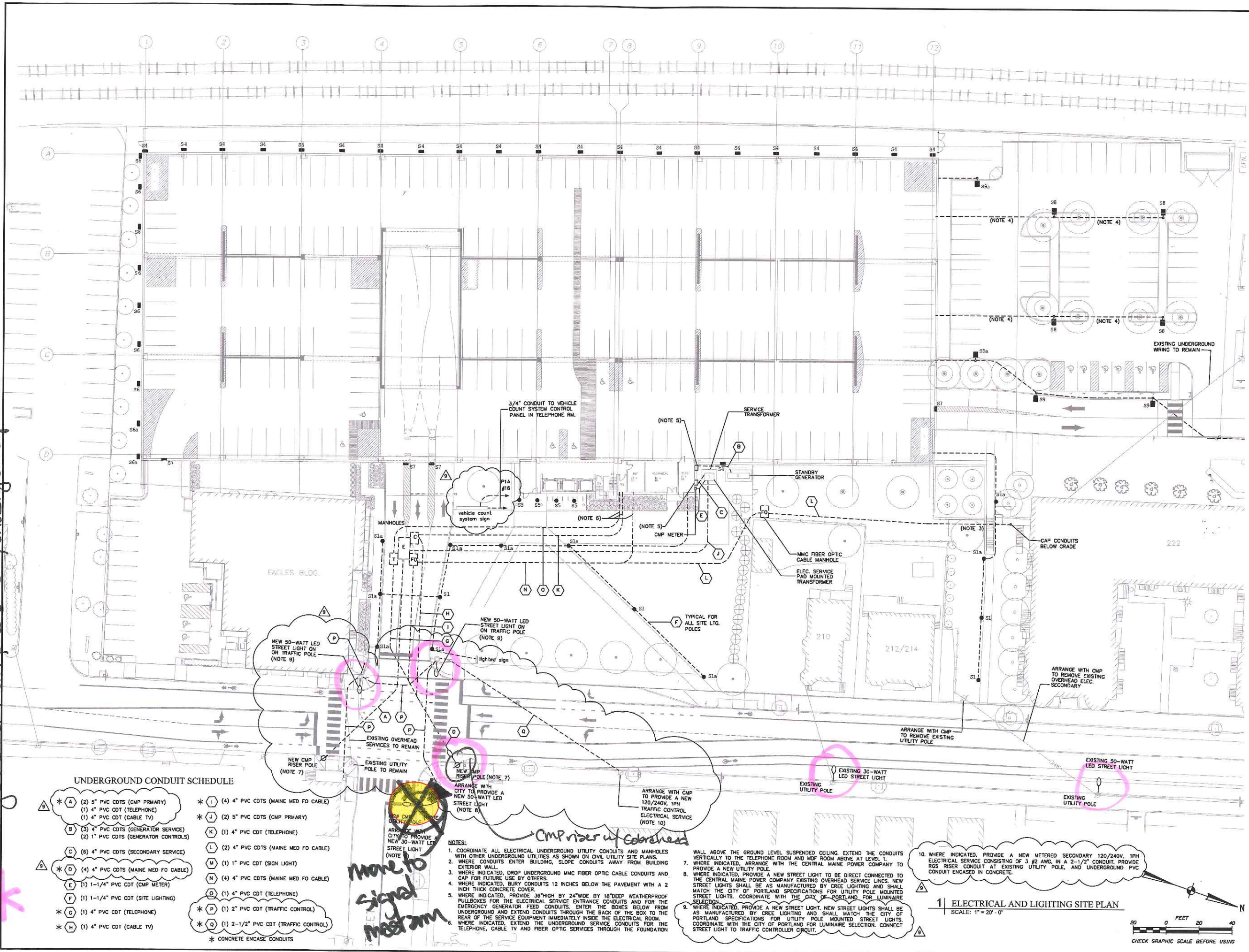


O = Keep these light locations
 X = Remove light from plan
 * = city standard metal pole ~~of~~ w/ underground power



UNDERGROUND CONDUIT SCHEDULE

- * A (2) 5" PVC CDTs (CMP PRIMARY)
 - (1) 4" PVC CDT (TELEPHONE)
 - (1) 4" PVC CDT (CABLE TV)
 - * B (3) 4" PVC CDTs (GENERATOR SERVICE)
 - (2) 1" PVC CDTs (GENERATOR CONTROLS)
 - * C (6) 4" PVC CDTs (SECONDARY SERVICE)
 - * D (4) 4" PVC CDTs (MAINE MED FO CABLE)
 - * E (1) 1-1/4" PVC CDT (CMP METER)
 - * F (1) 1-1/4" PVC CDT (SITE LIGHTING)
 - * G (1) 4" PVC CDT (TELEPHONE)
 - * H (1) 4" PVC CDT (CABLE TV)
 - * I (4) 4" PVC CDTs (MAINE MED FO CABLE)
 - * J (2) 5" PVC CDTs (CMP PRIMARY)
 - * K (1) 4" PVC CDT (TELEPHONE)
 - * L (2) 4" PVC CDTs (MAINE MED FO CABLE)
 - * M (1) 1" PVC CDT (SIGN LIGHT)
 - * N (4) 4" PVC CDTs (MAINE MED FO CABLE)
 - * O (1) 4" PVC CDT (TELEPHONE)
 - * P (1) 2" PVC CDT (TRAFFIC CONTROL)
 - * Q (1) 2-1/2" PVC CDT (TRAFFIC CONTROL)
- * CONCRETE ENCASE CONDUITS

- NOTES:
- COORDINATE ALL ELECTRICAL UNDERGROUND UTILITY CONDUITS AND MANHOLES WITH OTHER UNDERGROUND UTILITIES AS SHOWN ON CIVIL UTILITY SITE PLANS.
 - WHERE CONDUITS ENTER BUILDING, SLOPE CONDUITS AWAY FROM BUILDING EXTERIOR WALL.
 - WHERE INDICATED, DROP UNDERGROUND MMC FIBER OPTIC CABLE CONDUITS AND CAP FOR FUTURE USE BY OTHERS.
 - WHERE INDICATED, BURY CONDUITS 12 INCHES BELOW THE PAVEMENT WITH A 2 INCH THICK CONCRETE COVER.
 - WHERE INDICATED, PROVIDE 36" HIGH BY 24" WIDE BY 18" DEEP WEATHERPROOF PULLBOXES FOR THE ELECTRICAL SERVICE ENTRANCE CONDUITS AND FOR EMERGENCY GENERATOR FEED CONDUITS. ENTER THE BOXES BELOW FROM UNDERGROUND AND EXTEND CONDUITS THROUGH THE BACK OF THE BOX TO THE REAR OF THE SERVICE EQUIPMENT IMMEDIATELY INSIDE THE ELECTRICAL ROOM.
 - WHERE INDICATED, EXTEND THE UNDERGROUND SERVICE CONDUITS FOR THE TELEPHONE, CABLE TV AND FIBER OPTIC SERVICES THROUGH THE FOUNDATION

10. WHERE INDICATED, PROVIDE A NEW METERED SECONDARY 120/240V, 1PH ELECTRICAL SERVICE CONSISTING OF 3 #2 ANG. IN A 2-1/2" CONDUIT. PROVIDE RGS RISER CONDUIT AT EXISTING UTILITY POLE, AND UNDERGROUND PVC CONDUIT ENCASED IN CONCRETE.

1 | ELECTRICAL AND LIGHTING SITE PLAN
 SCALE: 1" = 20'-0"

20 0 FEET 20 40
 CHECK GRAPHIC SCALE BEFORE USING

BECKER
 ARCHITECTURAL ENGINEERS
 75 Oak Street, Portland, Maine 04101
 202.871.1858 • beckermaine.com

Bartlett Design
 LIGHTING DESIGN ENGINEERING
 5 PALMER STREET, PORTLAND, ME 04101
 TEL: (857) 443-5447

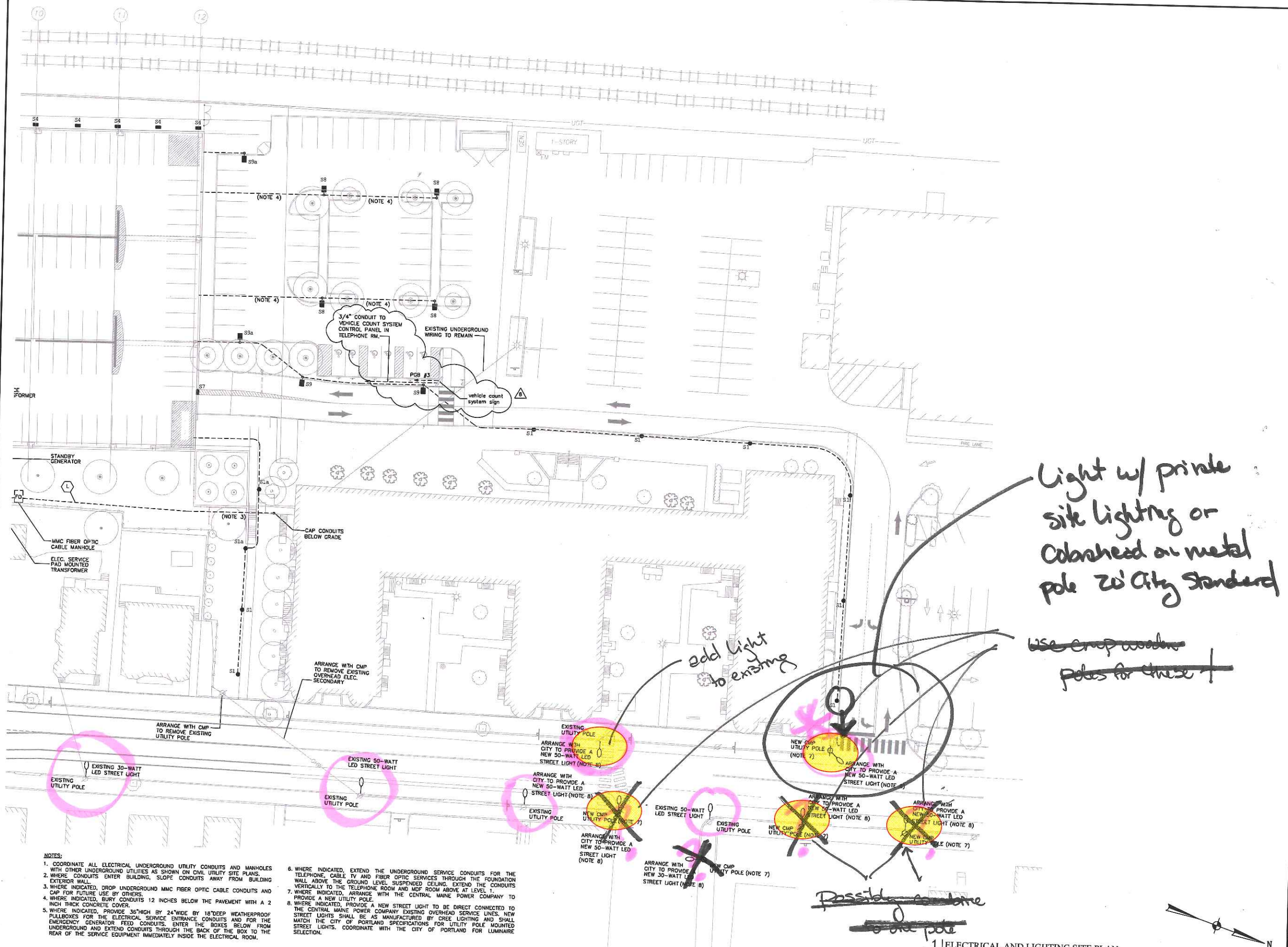
LICENSED PROFESSIONAL ENGINEER
 STATE OF MAINE
 No. 7123
 EXPIRES 12/31/19
 02/11/19

Revised For	Date	By
POINT SET - REVISED	10/17/18	
FIELD FOR CONSTRUCTION	10/29/18	
REVISED PERMANENT CONTROL SYSTEM	12/03/18	
REVISED ST. JOHN / P ST. INTERSECTION	02/07/19	
POST CONSTRUCTION ISSUE REVISION	02/11/19	

MMC ST. JOHN ST PG
 PORTLAND, ME
 ELECTRICAL SITE PLAN - 1

Drawn by: AS NOTED
 Date: 8/23/18
 Checked by: 4070

E1.1



- NOTES:
- COORDINATE ALL ELECTRICAL UNDERGROUND UTILITY CONDUITS AND MANHOLES WITH OTHER UNDERGROUND UTILITIES AS SHOWN ON CIVIL UTILITY SITE PLANS.
 - WHERE CONDUITS ENTER BUILDING, SLOPE CONDUITS AWAY FROM BUILDING EXTERIOR WALL.
 - WHERE INDICATED, DROP UNDERGROUND MMC FIBER OPTIC CABLE CONDUITS AND CAP FOR FUTURE USE BY OTHERS.
 - WHERE INDICATED, BURY CONDUITS 12 INCHES BELOW THE PAVEMENT WITH A 2 INCH THICK CONCRETE COVER.
 - WHERE INDICATED, PROVIDE 36" HIGH BY 24" WIDE BY 18" DEEP WEATHERPROOF RULLBOXES FOR THE ELECTRICAL SERVICE ENTRANCE CONDUITS AND FOR THE EMERGENCY GENERATOR FEED CONDUITS. ENTER THE BOXES BELOW FROM UNDERGROUND AND EXTEND CONDUITS THROUGH THE BACK OF THE BOX TO THE REAR OF THE SERVICE EQUIPMENT IMMEDIATELY INSIDE THE ELECTRICAL ROOM.
 - WHERE INDICATED, EXTEND THE UNDERGROUND SERVICE CONDUITS FOR THE TELEPHONE, CABLE TV AND FIBER OPTIC SERVICES THROUGH THE FOUNDATION WALL ABOVE THE GROUND LEVEL. SUSPENDED CEILING, EXTEND THE CONDUITS VERTICALLY TO THE TELEPHONE ROOM AND MDF ROOM ABOVE AT LEVEL 1.
 - WHERE INDICATED, ARRANGE WITH THE CENTRAL MAINE POWER COMPANY TO PROVIDE A NEW UTILITY POLE.
 - WHERE INDICATED, PROVIDE A NEW STREET LIGHT TO BE DIRECT CONNECTED TO THE CENTRAL MAINE POWER COMPANY EXISTING OVERHEAD SERVICE LINES. NEW STREET LIGHTS SHALL BE AS MANUFACTURED BY CREE LIGHTING AND SHALL MATCH THE CITY OF PORTLAND SPECIFICATIONS FOR UTILITY POLE MOUNTED STREET LIGHTS. COORDINATE WITH THE CITY OF PORTLAND FOR LUMINAIRE SELECTION.

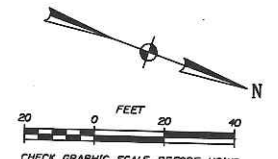
Light w/ private site lighting on colorhead on metal pole 20' City Standard

add light to existing

~~use crop wooden poles for these~~

~~possibly combine to one pole~~

1 | ELECTRICAL AND LIGHTING SITE PLAN
SCALE: 1" = 20'-0"



BECKER
75 Oak Street, Portland, ME 04101
202.773.1338 • beckerinc.com

Bartlett Design
ELECTRICAL ENGINEERING
5 PALM BEACH BLVD
TEL (887) 443-3447

STATE OF MAINE
LICENSED PROFESSIONAL ENGINEER
No. 7928
02/11/19

Rev	Date	By	For
1	02/21/18		As Shown in Contract
2	05/27/18		PERMIT SET - REVISION
3	10/15/18		REVISION FOR CONSTRUCTION
4	10/29/18		REVISION PERMITS CONTROL SYSTEM
5	10/29/18		REVISION PERMITS CONTROL SYSTEM
6	02/11/19		POST CONSTRUCTION SELF INSPECTION

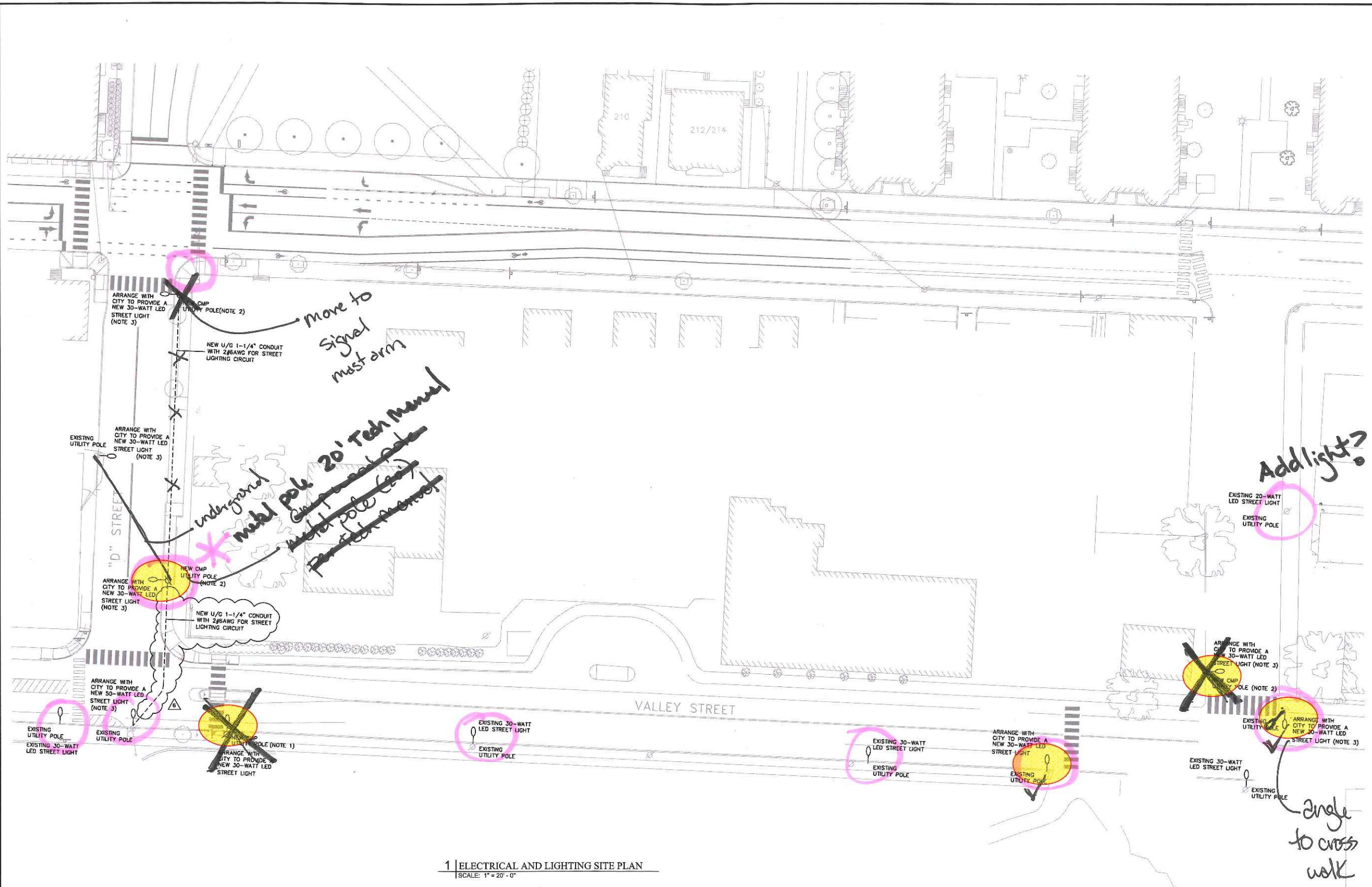
222 ST. JOHN ST PG
PORTLAND, ME

ELECTRICAL SITE PLAN - 2

Approved LEB	Scale 1"=20'-0"
Drawn LEB	Date 8/23/18
Checked LEB	Sheet Job Number 4070

E1.2

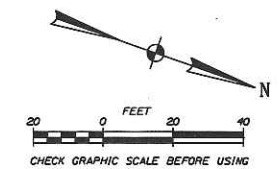
6/3/19



1 | ELECTRICAL AND LIGHTING SITE PLAN
SCALE: 1" = 20' - 0"

- NOTES:
1. ALL WORK SHOWN SHALL BE QUOTED UNDER AN ALTERNATE BID. INFORMATION SHOWN IS FOR PRICING ONLY AND NOT FOR CONSTRUCTION.
 2. WHERE INDICATED, ARRANGE WITH THE CENTRAL MAINE POWER COMPANY TO PROVIDE A NEW UTILITY POLE.
 3. WHERE INDICATED, PROVIDE A NEW STREET LIGHT TO BE DIRECT CONNECTED TO THE CENTRAL MAINE POWER COMPANY EXISTING OVERHEAD SERVICE LINES. NEW STREET LIGHTS SHALL BE AS MANUFACTURED BY CREE LIGHTING AND SHALL MATCH THE CITY OF PORTLAND SPECIFICATIONS FOR UTILITY POLE MOUNTED STREET LIGHTS. COORDINATE WITH THE CITY OF PORTLAND FOR LUMINAIRE SELECTION.

THIS DRAWING IS AN INSTRUMENT OF SERVICE AND SHALL REMAIN THE PROPERTY OF BECKER ENGINEERING ARCHITECTS AND DESIGNERS. IT IS TO BE USED ONLY FOR THE PROJECT AND SITE SPECIFICALLY IDENTIFIED HEREON. IT IS NOT TO BE REPRODUCED, COPIED, REUSED, OR TRANSMITTED IN ANY FORM OR BY ANY MEANS, ELECTRONIC OR MECHANICAL, INCLUDING PHOTOCOPYING, RECORDING, OR BY ANY INFORMATION STORAGE AND RETRIEVAL SYSTEM, WITHOUT THE WRITTEN PERMISSION OF BECKER ENGINEERING ARCHITECTS AND DESIGNERS.



Bartlett Design
LIGHTING & ELECTRICAL ENGINEERING
2 PALMER STREET, SUITE 100
PORTLAND, ME 04101
TEL: (207) 443-3447



Revised For	Date	By
REVISE PER - FOUNDATION, SET & CLAMOR	06/27/18	1
REVISE PER - FOUNDATION, SET & CLAMOR	06/27/18	2
REVISE PER - FOUNDATION, SET & CLAMOR	06/27/18	3
REVISE PER - FOUNDATION, SET & CLAMOR	06/27/18	4
REVISE PER - FOUNDATION, SET & CLAMOR	06/27/18	5

MMC ST. JOHN ST PARKING GARAGE
PORTLAND, ME
ELECTRICAL SITE PLAN - 3

Designed	Scale
LEB	AS NOTED
Checked	Date
LEB	06/27/18
Checked	Project Job Number
LEB	4070

E1.3