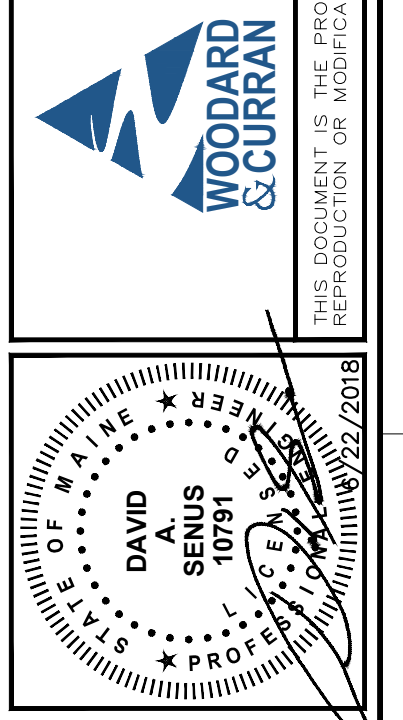


41 Hutchins Drive
Portland, Maine 04102
800.426.4362 | www.woodardcurran.com

WOODARD & CURRAN
COMMITMENT & INTEGRITY DRIVE RESULTS

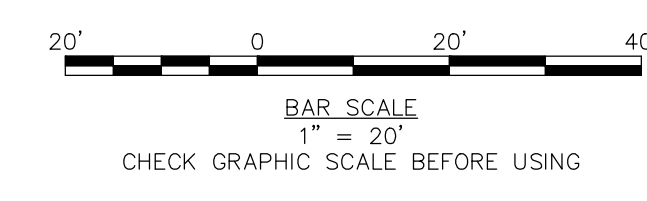
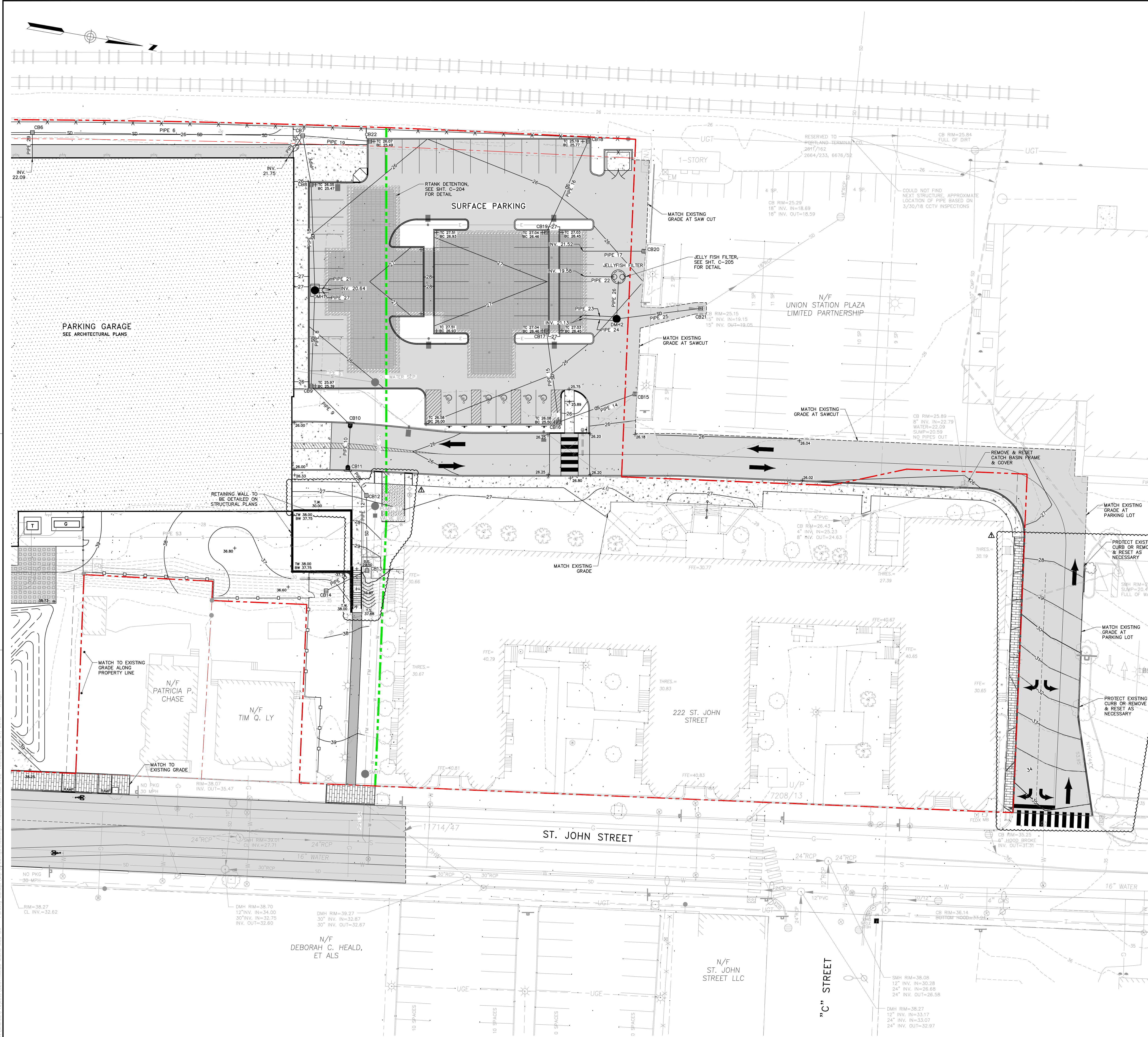


NO.	DATE	DESCRIPTION	BY	CHKD.
1	1/24/2018	RESPONSE TO COMMENTS SUBMISSION	DAW	DAW
2	1/24/2018	REVISIONS TO COMMENTS SUBMISSION	DAW	DAW
3	1/24/2018	REVISIONS TO COMMENTS SUBMISSION	DAW	DAW
4	1/24/2018	REVISIONS TO COMMENTS SUBMISSION	DAW	DAW
5	1/24/2018	REVISIONS TO COMMENTS SUBMISSION	DAW	DAW
6	1/24/2018	REVISIONS TO COMMENTS SUBMISSION	DAW	DAW
7	1/24/2018	REVISIONS TO COMMENTS SUBMISSION	DAW	DAW
8	1/24/2018	REVISIONS TO COMMENTS SUBMISSION	DAW	DAW
9	1/24/2018	REVISIONS TO COMMENTS SUBMISSION	DAW	DAW
10	1/24/2018	REVISIONS TO COMMENTS SUBMISSION	DAW	DAW
11	1/24/2018	REVISIONS TO COMMENTS SUBMISSION	DAW	DAW
12	1/24/2018	REVISIONS TO COMMENTS SUBMISSION	DAW	DAW
13	1/24/2018	REVISIONS TO COMMENTS SUBMISSION	DAW	DAW
14	1/24/2018	REVISIONS TO COMMENTS SUBMISSION	DAW	DAW
15	1/24/2018	REVISIONS TO COMMENTS SUBMISSION	DAW	DAW
16	1/24/2018	REVISIONS TO COMMENTS SUBMISSION	DAW	DAW
17	1/24/2018	REVISIONS TO COMMENTS SUBMISSION	DAW	DAW
18	1/24/2018	REVISIONS TO COMMENTS SUBMISSION	DAW	DAW
19	1/24/2018	REVISIONS TO COMMENTS SUBMISSION	DAW	DAW
20	1/24/2018	REVISIONS TO COMMENTS SUBMISSION	DAW	DAW
21	1/24/2018	REVISIONS TO COMMENTS SUBMISSION	DAW	DAW
22	1/24/2018	REVISIONS TO COMMENTS SUBMISSION	DAW	DAW
23	1/24/2018	REVISIONS TO COMMENTS SUBMISSION	DAW	DAW
24	1/24/2018	REVISIONS TO COMMENTS SUBMISSION	DAW	DAW
25	1/24/2018	REVISIONS TO COMMENTS SUBMISSION	DAW	DAW
26	1/24/2018	REVISIONS TO COMMENTS SUBMISSION	DAW	DAW
27	1/24/2018	REVISIONS TO COMMENTS SUBMISSION	DAW	DAW
28	1/24/2018	REVISIONS TO COMMENTS SUBMISSION	DAW	DAW
29	1/24/2018	REVISIONS TO COMMENTS SUBMISSION	DAW	DAW
30	1/24/2018	REVISIONS TO COMMENTS SUBMISSION	DAW	DAW
31	1/24/2018	REVISIONS TO COMMENTS SUBMISSION	DAW	DAW
32	1/24/2018	REVISIONS TO COMMENTS SUBMISSION	DAW	DAW
33	1/24/2018	REVISIONS TO COMMENTS SUBMISSION	DAW	DAW
34	1/24/2018	REVISIONS TO COMMENTS SUBMISSION	DAW	DAW
35	1/24/2018	REVISIONS TO COMMENTS SUBMISSION	DAW	DAW
36	1/24/2018	REVISIONS TO COMMENTS SUBMISSION	DAW	DAW
37	1/24/2018	REVISIONS TO COMMENTS SUBMISSION	DAW	DAW
38	1/24/2018	REVISIONS TO COMMENTS SUBMISSION	DAW	DAW
39	1/24/2018	REVISIONS TO COMMENTS SUBMISSION	DAW	DAW
40	1/24/2018	REVISIONS TO COMMENTS SUBMISSION	DAW	DAW
41	1/24/2018	REVISIONS TO COMMENTS SUBMISSION	DAW	DAW
42	1/24/2018	REVISIONS TO COMMENTS SUBMISSION	DAW	DAW
43	1/24/2018	REVISIONS TO COMMENTS SUBMISSION	DAW	DAW
44	1/24/2018	REVISIONS TO COMMENTS SUBMISSION	DAW	DAW
45	1/24/2018	REVISIONS TO COMMENTS SUBMISSION	DAW	DAW
46	1/24/2018	REVISIONS TO COMMENTS SUBMISSION	DAW	DAW
47	1/24/2018	REVISIONS TO COMMENTS SUBMISSION	DAW	DAW
48	1/24/2018	REVISIONS TO COMMENTS SUBMISSION	DAW	DAW
49	1/24/2018	REVISIONS TO COMMENTS SUBMISSION	DAW	DAW
50	1/24/2018	REVISIONS TO COMMENTS SUBMISSION	DAW	DAW
51	1/24/2018	REVISIONS TO COMMENTS SUBMISSION	DAW	DAW
52	1/24/2018	REVISIONS TO COMMENTS SUBMISSION	DAW	DAW
53	1/24/2018	REVISIONS TO COMMENTS SUBMISSION	DAW	DAW
54	1/24/2018	REVISIONS TO COMMENTS SUBMISSION	DAW	DAW
55	1/24/2018	REVISIONS TO COMMENTS SUBMISSION	DAW	DAW
56	1/24/2018	REVISIONS TO COMMENTS SUBMISSION	DAW	DAW
57	1/24/2018	REVISIONS TO COMMENTS SUBMISSION	DAW	DAW
58	1/24/2018	REVISIONS TO COMMENTS SUBMISSION	DAW	DAW
59	1/24/2018	REVISIONS TO COMMENTS SUBMISSION	DAW	DAW
60	1/24/2018	REVISIONS TO COMMENTS SUBMISSION	DAW	DAW
61	1/24/2018	REVISIONS TO COMMENTS SUBMISSION	DAW	DAW
62	1/24/2018	REVISIONS TO COMMENTS SUBMISSION	DAW	DAW
63	1/24/2018	REVISIONS TO COMMENTS SUBMISSION	DAW	DAW
64	1/24/2018	REVISIONS TO COMMENTS SUBMISSION	DAW	DAW
65	1/24/2018	REVISIONS TO COMMENTS SUBMISSION	DAW	DAW
66	1/24/2018	REVISIONS TO COMMENTS SUBMISSION	DAW	DAW
67	1/24/2018	REVISIONS TO COMMENTS SUBMISSION	DAW	DAW
68	1/24/2018	REVISIONS TO COMMENTS SUBMISSION	DAW	DAW
69	1/24/2018	REVISIONS TO COMMENTS SUBMISSION	DAW	DAW
70	1/24/2018	REVISIONS TO COMMENTS SUBMISSION	DAW	DAW
71	1/24/2018	REVISIONS TO COMMENTS SUBMISSION	DAW	DAW
72	1/24/2018	REVISIONS TO COMMENTS SUBMISSION	DAW	DAW
73	1/24/2018	REVISIONS TO COMMENTS SUBMISSION	DAW	DAW
74	1/24/2018	REVISIONS TO COMMENTS SUBMISSION	DAW	DAW
75	1/24/2018	REVISIONS TO COMMENTS SUBMISSION	DAW	DAW
76	1/24/2018	REVISIONS TO COMMENTS SUBMISSION	DAW	DAW
77	1/24/2018	REVISIONS TO COMMENTS SUBMISSION	DAW	DAW
78	1/24/2018	REVISIONS TO COMMENTS SUBMISSION	DAW	DAW
79	1/24/2018	REVISIONS TO COMMENTS SUBMISSION	DAW	DAW
80	1/24/2018	REVISIONS TO COMMENTS SUBMISSION	DAW	DAW
81	1/24/2018	REVISIONS TO COMMENTS SUBMISSION	DAW	DAW
82	1/24/2018	REVISIONS TO COMMENTS SUBMISSION	DAW	DAW
83	1/24/2018	REVISIONS TO COMMENTS SUBMISSION	DAW	DAW
84	1/24/2018	REVISIONS TO COMMENTS SUBMISSION	DAW	DAW
85	1/24/2018	REVISIONS TO COMMENTS SUBMISSION	DAW	DAW
86	1/24/2018	REVISIONS TO COMMENTS SUBMISSION	DAW	DAW
87	1/24/2018	REVISIONS TO COMMENTS SUBMISSION	DAW	DAW
88	1/24/2018	REVISIONS TO COMMENTS SUBMISSION	DAW	DAW
89	1/24/2018	REVISIONS TO COMMENTS SUBMISSION	DAW	DAW
90	1/24/2018	REVISIONS TO COMMENTS SUBMISSION	DAW	DAW
91	1/24/2018	REVISIONS TO COMMENTS SUBMISSION	DAW	DAW
92	1/24/2018	REVISIONS TO COMMENTS SUBMISSION	DAW	DAW
93	1/24/2018	REVISIONS TO COMMENTS SUBMISSION	DAW	DAW
94	1/24/2018	REVISIONS TO COMMENTS SUBMISSION	DAW	DAW
95	1/24/2018	REVISIONS TO COMMENTS SUBMISSION	DAW	DAW
96	1/24/2018	REVISIONS TO COMMENTS SUBMISSION	DAW	DAW
97	1/24/2018	REVISIONS TO COMMENTS SUBMISSION	DAW	DAW
98	1/24/2018	REVISIONS TO COMMENTS SUBMISSION	DAW	DAW
99	1/24/2018	REVISIONS TO COMMENTS SUBMISSION	DAW	DAW
100	1/24/2018	REVISIONS TO COMMENTS SUBMISSION	DAW	DAW

STRUCTURE TABLE						
NAME	DIA.	RIM	SUMP DEPTH	INV IN/SIZE/FROM	INV OUT/SIZE/TO	
CB6	4'	25.80	2'	22.05/18"SD/CB23 22.05/12"SD/GAR.	21.95/18"SD/CB7	
CB7	4'	26.00	2'	21.71/18"SD/CB6 21.80/10"SD/CB22 21.71/12"SD/GAR.	21.61/18"SD/CB8	
CB8	4'	25.47	2'	21.57/18"SD/CB7	21.47/18"SD/DMH1	
CB9	4'	25.39	2'	21.27/15"SD/CB10	21.17/15"SD/DMH1	
CB10	4'	25.47	2'	21.43/15"SD/CB11	21.33/15"SD/CB9	
CB11	4'	25.48	2'	21.58/10"SD/CB12	21.48/15"SD/CB10	
CB12	4'	26.90	2'	21.73/10"SD/CB13	21.63/10"SD/CB11	
CB13	4'	29.80	2'	24.93/10"SD/CB14	24.83/10"SD/CB12	
CB14	4'	36.50	2'		25.00/10"SD/CB13	
CB15	4'	25.74	2'		21.73/10"SD/CB16	
CB16	4'	25.50	2'	21.85/10"SD/CB15	21.75/10"SD/CB17	
CB17	4'	26.46	2'	21.51/10"SD/CB16	21.41/ * /RTANK 3	
CB18	4'	25.19	2'		21.65/10"SD/CB19	
CB19	4'	26.46	2'	21.50/10"SD/CB18	21.40/ * /RTANK 2	
CB20	4'	23.43	2'		21.74/10"SD/	
CB21	4'	25.15	2'	19.15/18"SD/DMH2	19.05/18"RCP/	
CB22	4'	25.49	2'		21.89/10"SD/CB7	
DMH1	4'x6'	25.16	2'	21.05/15"SD/CB9 21.39/18"SD/CB8	20.65/18"SD/RTANK 1 20.65/18"SD/RTANK 1	
DMH2	8'	25.92	2'	19.30/15"SD/JELLYFISH FILTER 19.20/15"SD/RTANK 6 19.20/15"SD/RTANK 5	19.20/18"SD/CB21	
JELLYFISH FILTER	4'	21.69	2'	19.58/15"SD/RTANK 4	19.34/15"SD/DMH2	

*NOTE - R TANK INLET STRUCTURES CONNECT DIRECTLY TO TANK STRUCTURES

PIPE TABLE			
PIPE NAME	SIZE	LENGTH	SLOPE
PIPE 6	18" SD	136'	0.0017
PIPE 7	18" SD	22'	0.0015
PIPE 8	15" SD	45'	0.0022
PIPE 9	15" SD	25'	0.0022
PIPE 10	15" SD	19'	0.0022
PIPE 11	10" SD	13'	0.0028
PIPE 12	10" SD	35'	0.0785
PIPE 13	10" SD	20'	0.0030
PIPE 14	10" SD	39'	0.0028
PIPE 15	10" SD	44'	0.0050
PIPE 16	10" SD	49'	0.0028
PIPE 17	10" SD	30'	0.0069
PIPE 18	18" SD	51'	0.0015
PIPE 19	10" SD	32'	0.0025
PIPE 21	18" SD	5'	0.0000
PIPE 22	15" SD	17'	0.0000
PIPE 23	15" SD	14'	0.1082
PIPE 24	15" SD	14'	0.1086
PIPE 25	18" SD	39'	0.0012
PIPE 26	15" SD	16'	0.0015
PIPE 27	18" SD	5'	0.0000
PIPE 29	12" SD	11'	0.0028
PIPE 30	12" SD	12'	0.0028



LEVEL III SITE PLAN APPLICATION - NOT FOR CONSTRUCTION

GRADING & DRAINAGE PLAN - 2

MAINE MEDICAL CENTER
BRANFILL STREET
PORTLAND, ME 04102

MVC ST. JOHN STREET
EMPLOYEE PARKING GARAGE

JOB NO: 023158-00
DATE: LINE 22, 2018
SCALE: 1"=20'
SHEET: 7 OF 17

C-103