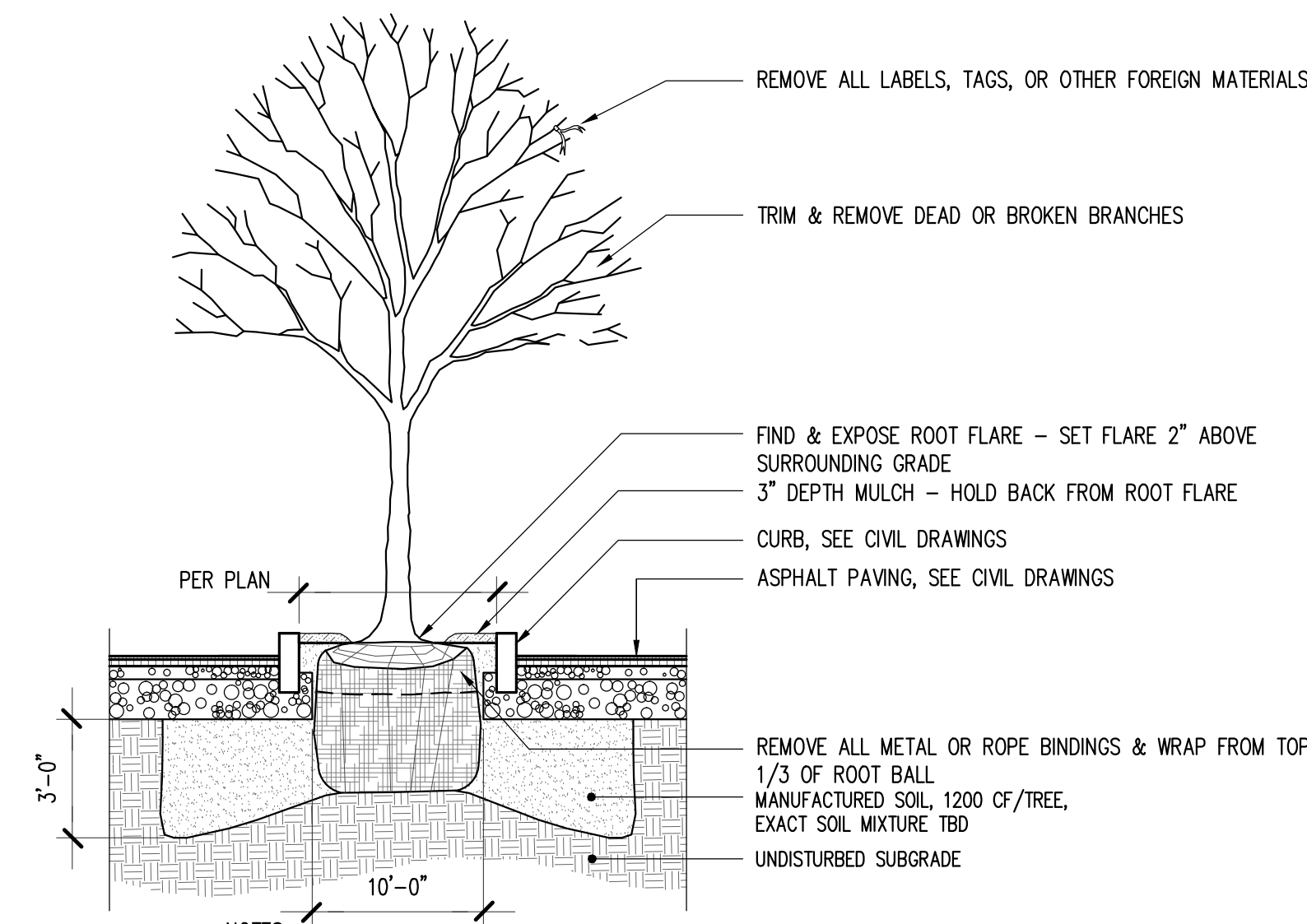


NOTES:

1. TREE TO BE SET PLUMB.
2. SECURE TREE AS MAY BE REQUIRED ACCORDING TO TREE SIZE, LOCATION, & WIND/WEATHER CONDITIONS.
3. IF USING ROOTBALL STABILIZATION, FOLLOW MANUFACTURER'S RECOMMENDATIONS.

1 TREE PLANTING DETAIL

1/4"=1'-0"

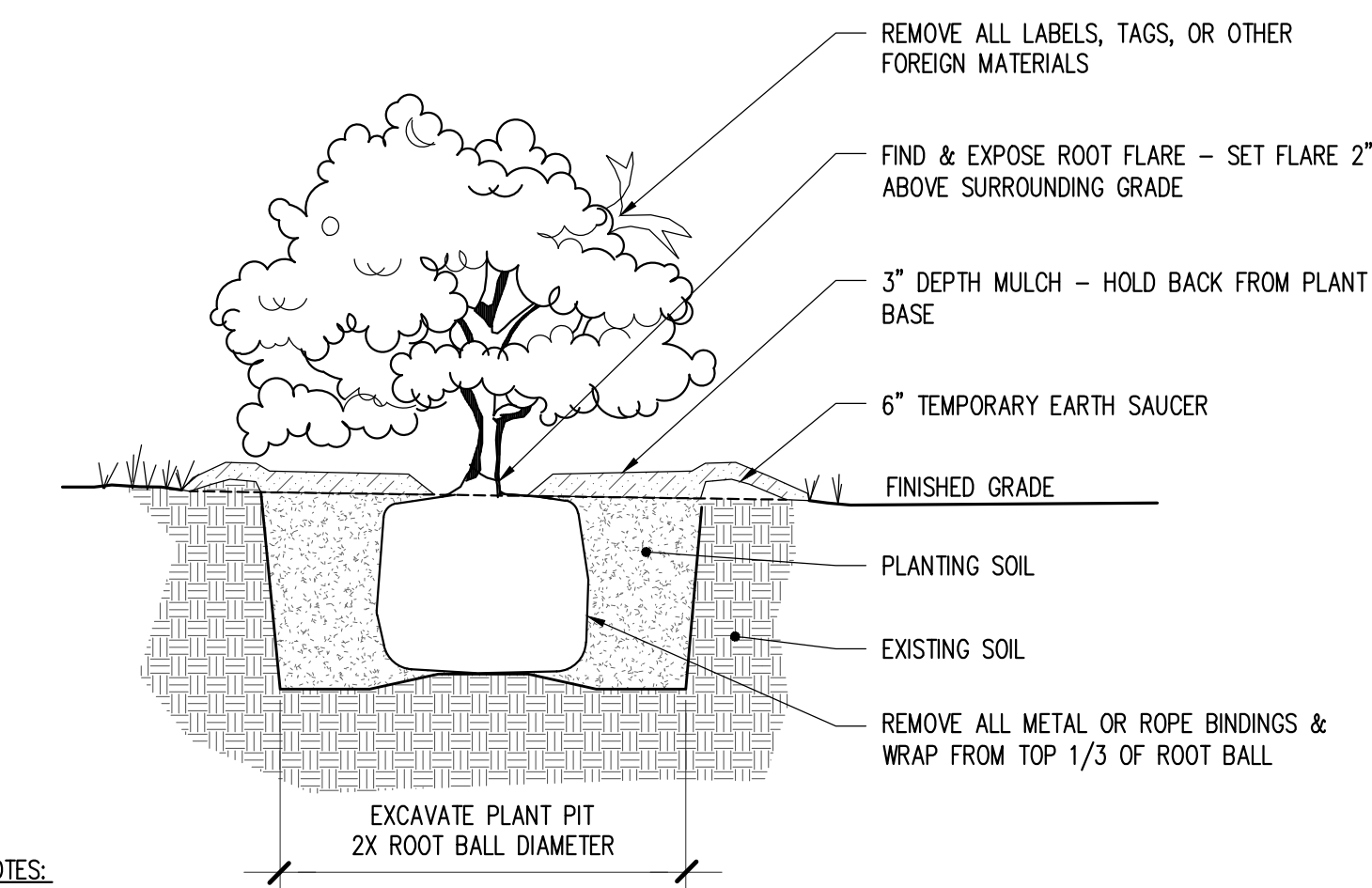


NOTES:

1. TREE PITS TO INCLUDE ROOT IRRIGATION AND AERATION SYSTEM, TBD.
2. TREE TO BE SET PLUMB.
3. SECURE TREE AS MAY BE REQUIRED ACCORDING TO TREE SIZE, LOCATION, & WIND/WEATHER CONDITIONS.
4. IF USING ROOTBALL STABILIZATION, FOLLOW MANUFACTURER'S RECOMMENDATIONS.

2 TREE PLANTING IN ASPHALT DETAIL

1/4"=1'-0"

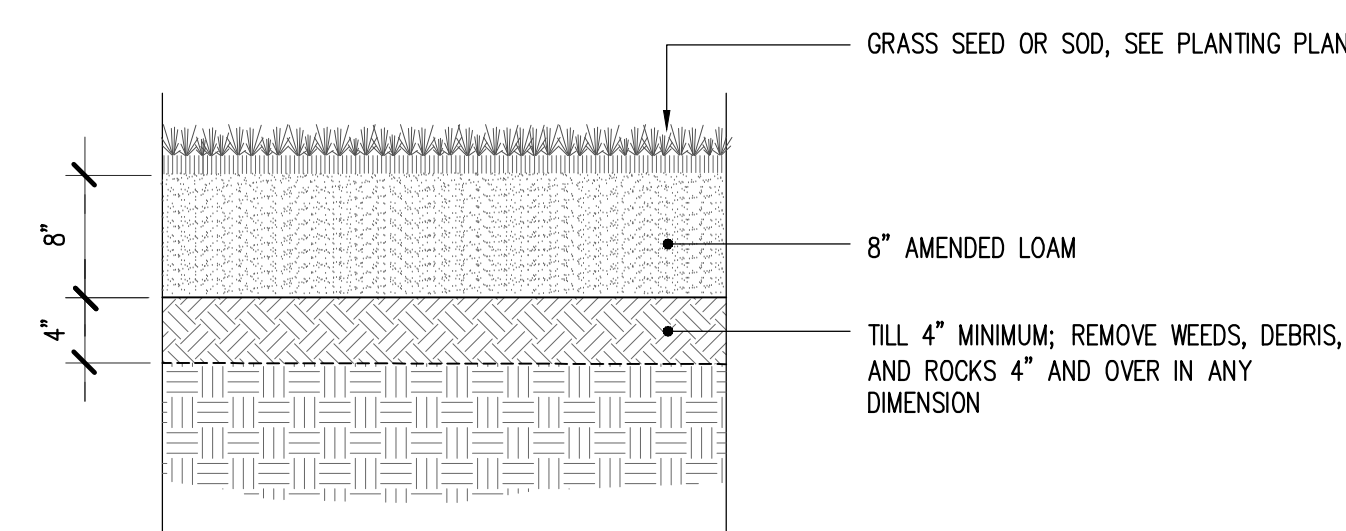


NOTES:

1. SHRUB TO BE SET PLUMB.
2. SECURE SHRUB AS MAY BE REQUIRED ACCORDING TO SIZE, LOCATION, & WIND/WEATHER CONDITIONS.
3. IF USING ROOTBALL STABILIZATION, FOLLOW MANUFACTURER'S RECOMMENDATIONS.

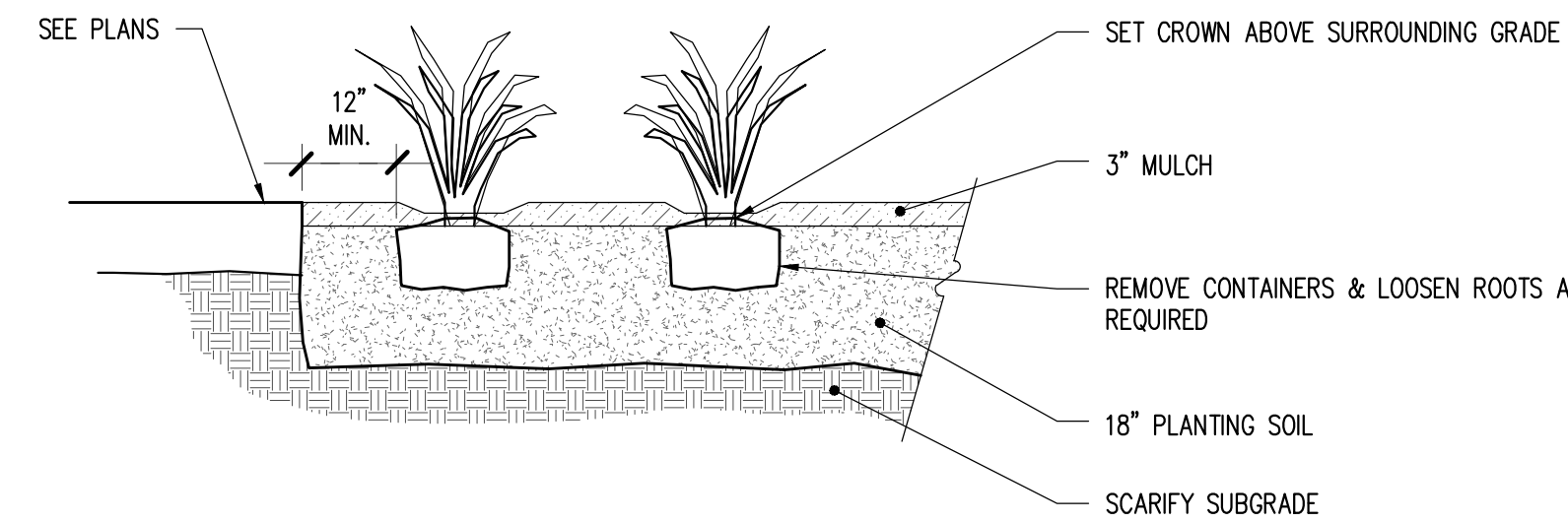
3 SHRUB PLANTING DETAIL

1/2"=1'-0"



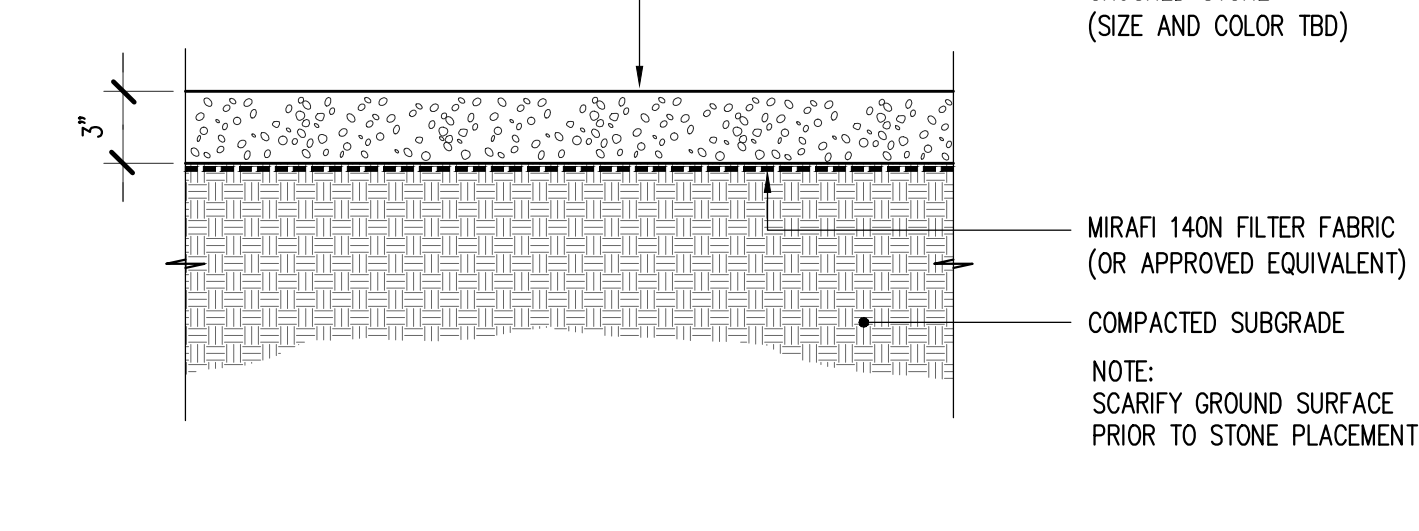
4 TURF PLANTING DETAIL

1"=1'-0"



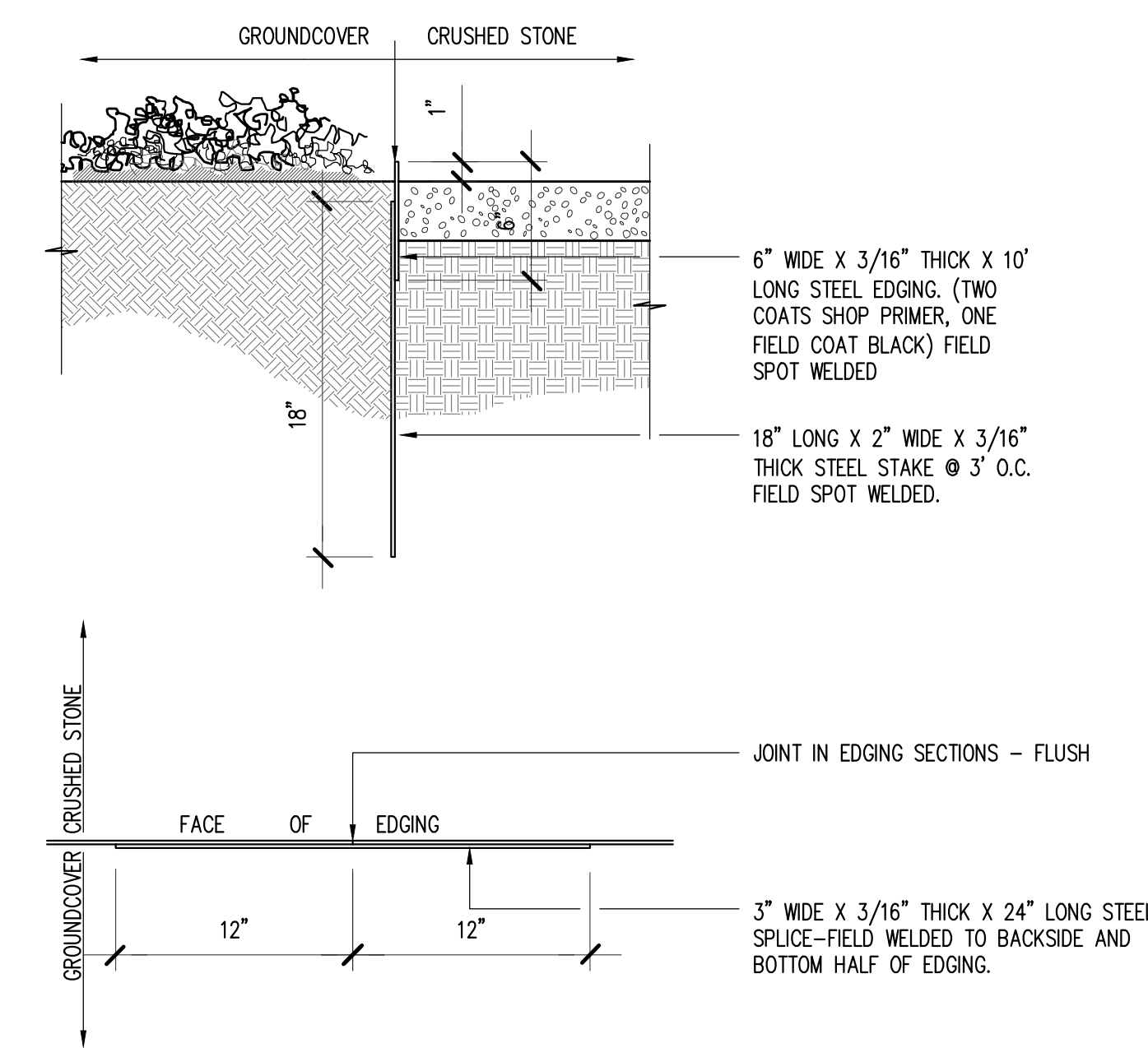
5 GROUNDCOVER PLANTING DETAIL

1/2"=1'-0"



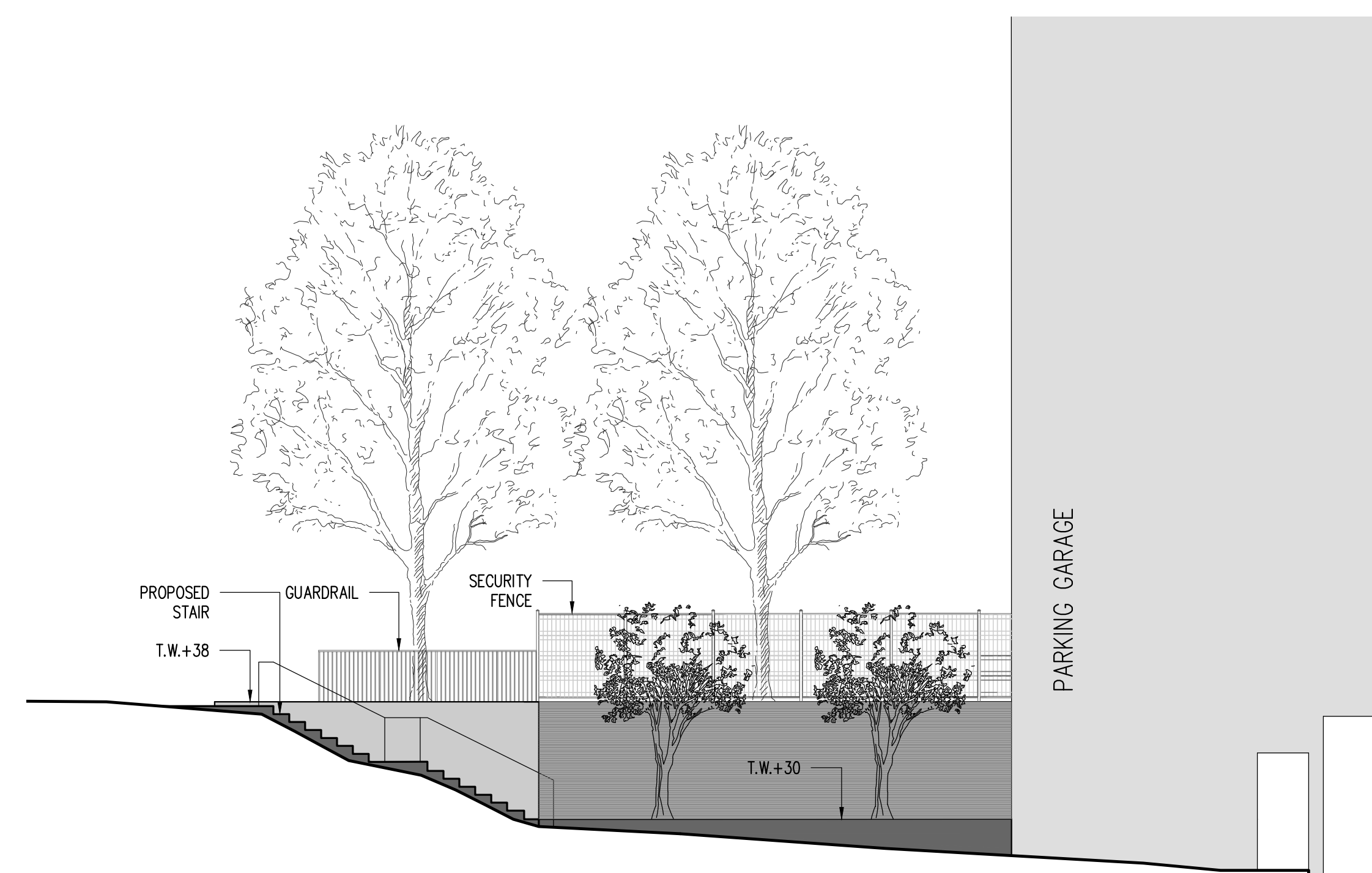
6 CRUSHED STONE PAVING DETAIL

1-1/2"=1'-0"



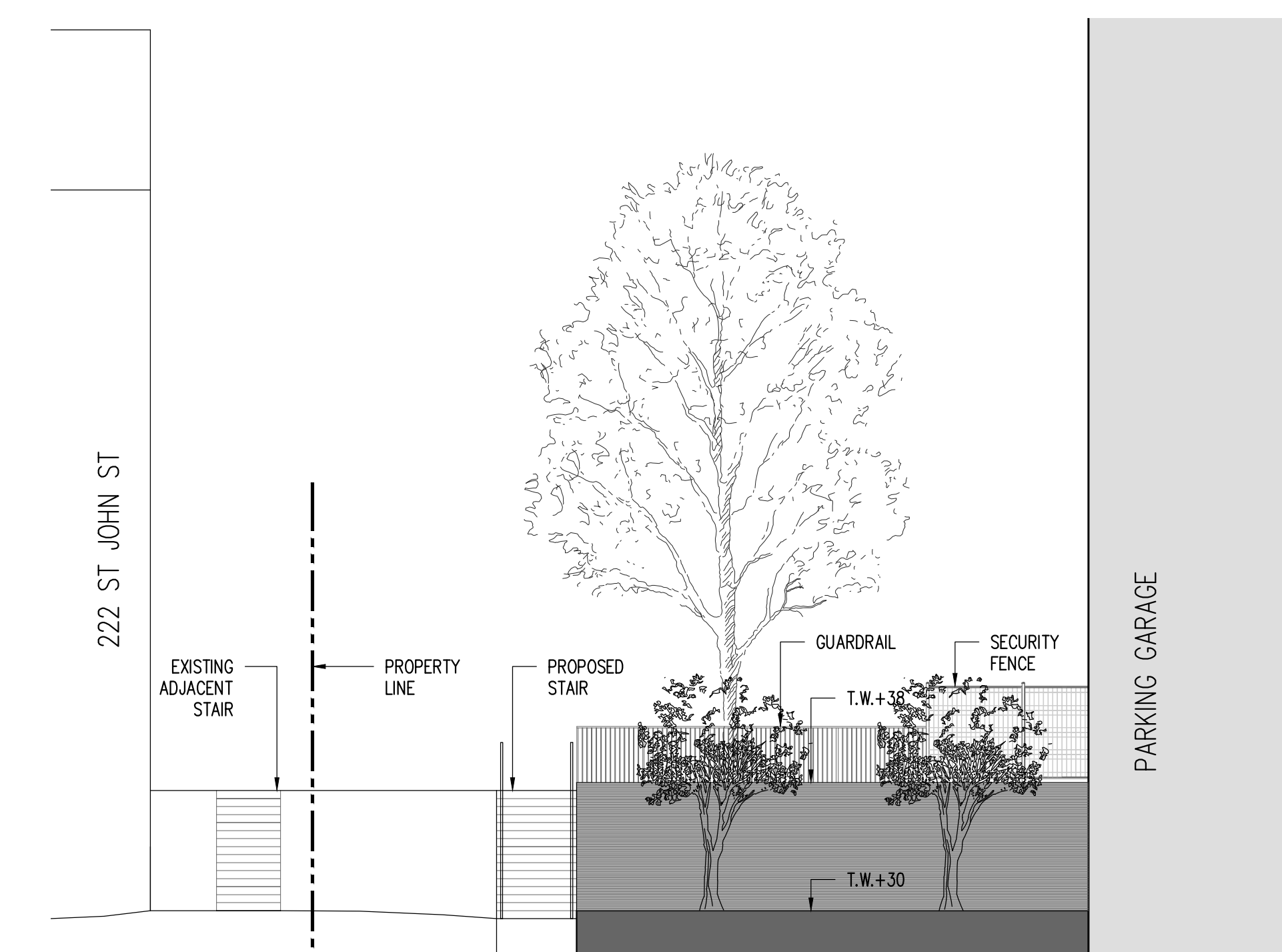
7 STEEL EDGE DETAIL

1-1/2"=1'-0"



8 E/W SECTION AT STAIR

1/8"=1'-0"



9 N/S SECTION AT STAIR

1/8"=1'-0"

Appoint	
Date	
Rev No	

222 ST. JOHN ST PG
PORTLAND, ME
LEVEL III SITE PLAN SUBMITTAL

Designed GG	Scale 1" = 20'-0"
Drawn GG	Date 04.10.2018
Checked JP	Becker Job Number 4070