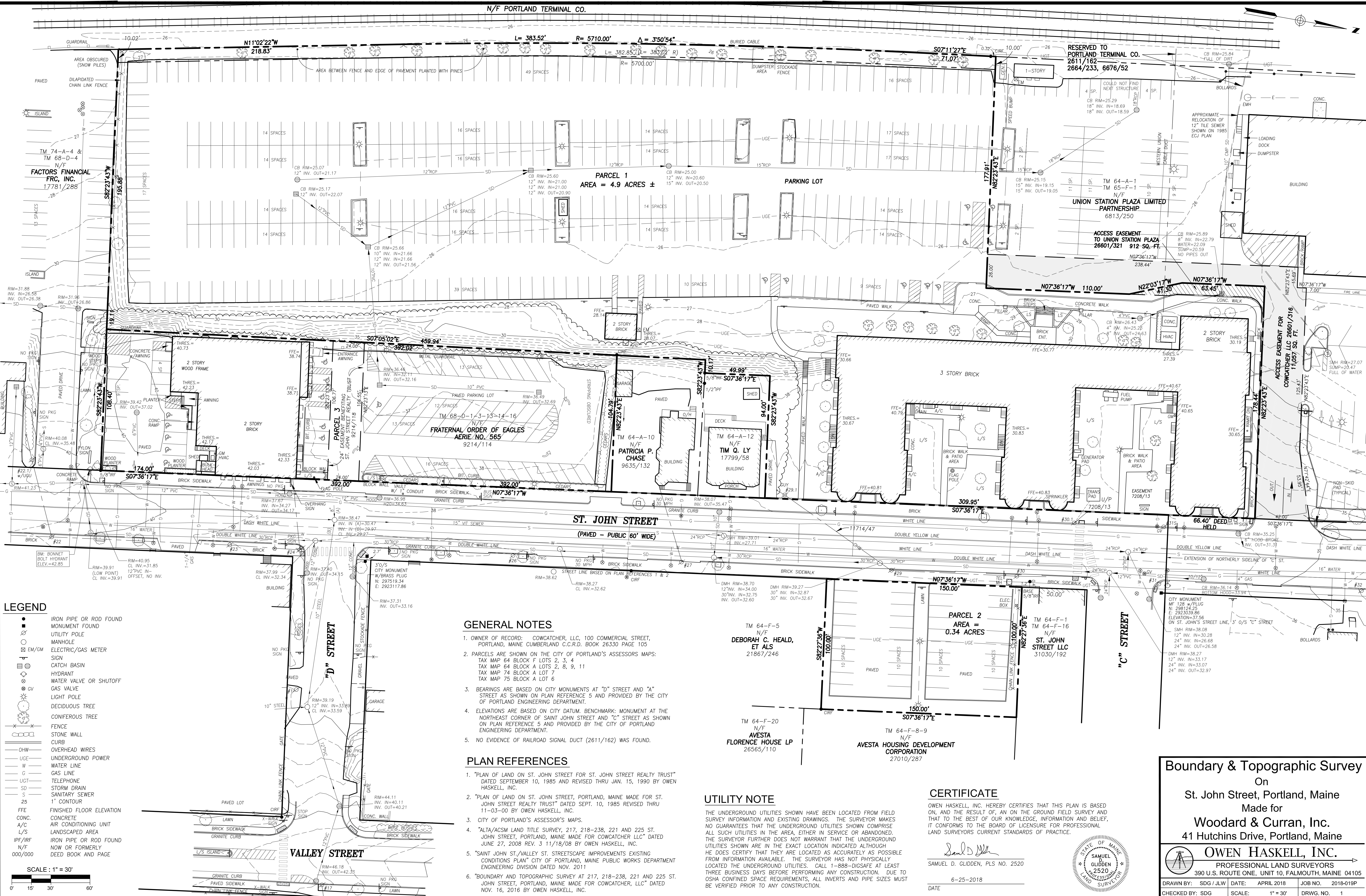

19. BOUNDARY SURVEY

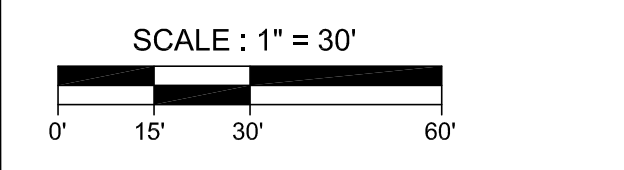
A boundary survey of the Maine Medical Center parking garage at St. John Street was completed by Owen Haskell, Inc. in November 2016 and is attached to this Section. The boundary survey meets standards defined in Technical Manual Section 13.

19.1 Attachments

- Boundary Survey



- LEGEND**
- IRON PIPE OR ROD FOUND
 - MONUMENT FOUND
 - UTILITY POLE
 - EM/GM MANHOLE
 - ELECTRIC/GAS METER
 - SIGN
 - CATCH BASIN
 - HYDRANT
 - WATER VALVE OR SHUTOFF
 - GAS VALVE
 - LIGHT POLE
 - DECIDUOUS TREE
 - CONIFEROUS TREE
 - FENCE
 - STONE WALL
 - CURB
 - OHW OVERHEAD WIRES
 - UGE UNDERGROUND POWER
 - W WATER LINE
 - G GAS LINE
 - UGT TELEPHONE
 - SD STORM DRAIN
 - S SANITARY SEWER
 - 25 1' CONTOUR
 - FFE FINISHED FLOOR ELEVATION
 - CONC. CONCRETE
 - A/C AIR CONDITIONING UNIT
 - L/S LANDSCAPED AREA
 - IPF/IRF IRON PIPE OR ROD FOUND NOW OR FORMERLY
 - N/F DEED BOOK AND PAGE



GENERAL NOTES

- OWNER OF RECORD: COWCATCHER, LLC, 100 COMMERCIAL STREET, PORTLAND, MAINE CUMBERLAND C.C.R.D. BOOK 26330 PAGE 105
- PARCELS ARE SHOWN ON THE CITY OF PORTLAND'S ASSESSORS MAPS: TAX MAP 64 BLOCK F LOTS 2, 3, 4; TAX MAP 64 BLOCK A LOTS 2, 8, 9, 11; TAX MAP 74 BLOCK A LOT 7; TAX MAP 75 BLOCK A LOT 6
- BEARINGS ARE BASED ON CITY MONUMENTS AT "D" STREET AND "A" STREET AS SHOWN ON PLAN REFERENCE 5 AND PROVIDED BY THE CITY OF PORTLAND ENGINEERING DEPARTMENT.
- ELEVATIONS ARE BASED ON CITY DATUM. BENCHMARK: MONUMENT AT THE NORTHEAST CORNER OF SAINT JOHN STREET AND "C" STREET AS SHOWN ON PLAN REFERENCE 5 AND PROVIDED BY THE CITY OF PORTLAND ENGINEERING DEPARTMENT.
- NO EVIDENCE OF RAILROAD SIGNAL DUCT (2611/162) WAS FOUND.

PLAN REFERENCES

- "PLAN OF LAND ON ST. JOHN STREET FOR ST. JOHN STREET REALTY TRUST" DATED SEPTEMBER 10, 1985 AND REVISED THRU JAN. 15, 1990 BY OWEN HASKELL, INC.
- "PLAN OF LAND ON ST. JOHN STREET, PORTLAND, MAINE MADE FOR ST. JOHN STREET REALTY TRUST" DATED SEPT. 10, 1985 REVISED THRU 11-03-00 BY OWEN HASKELL, INC.
- CITY OF PORTLAND'S ASSESSOR'S MAPS.
- "ALTA/ACM LAND TITLE SURVEY, 217, 218-238, 221 AND 225 ST. JOHN STREET, PORTLAND, MAINE MADE FOR COWCATCHER LLC" DATED JUNE 27, 2008 REV. 3 11/18/08 BY OWEN HASKELL, INC.
- "SAINT JOHN ST./VALLEY ST. STREETScape IMPROVEMENTS EXISTING CONDITIONS PLAN" CITY OF PORTLAND, MAINE PUBLIC WORKS DEPARTMENT ENGINEERING DIVISION DATED NOV. 2011
- "BOUNDARY AND TOPOGRAPHIC SURVEY AT 217, 218-238, 221 AND 225 ST. JOHN STREET, PORTLAND, MAINE MADE FOR COWCATCHER, LLC" DATED NOV. 16, 2016 BY OWEN HASKELL, INC.

UTILITY NOTE

THE UNDERGROUND UTILITIES SHOWN HAVE BEEN LOCATED FROM FIELD SURVEY INFORMATION AND EXISTING DRAWINGS. THE SURVEYOR MAKES NO GUARANTEES THAT THE UNDERGROUND UTILITIES SHOWN COMPRISE ALL SUCH UTILITIES IN THE AREA, EITHER IN SERVICE OR ABANDONED. THE SURVEYOR FURTHER DOES NOT WARRANT THAT THE UNDERGROUND UTILITIES SHOWN ARE IN THE EXACT LOCATION INDICATED ALTHOUGH HE DOES CERTIFY THAT THEY ARE LOCATED AS ACCURATELY AS POSSIBLE FROM INFORMATION AVAILABLE. THE SURVEYOR HAS NOT PHYSICALLY LOCATED THE UNDERGROUND UTILITIES. CALL 1-888-DIGSAFE AT LEAST THREE BUSINESS DAYS BEFORE PERFORMING ANY CONSTRUCTION. DUE TO OSHA CONFINED SPACE REQUIREMENTS, ALL INVERTS AND PIPE SIZES MUST BE VERIFIED PRIOR TO ANY CONSTRUCTION.

CERTIFICATE

OWEN HASKELL, INC. HEREBY CERTIFIES THAT THIS PLAN IS BASED ON, AND THE RESULT OF, AN ON THE GROUND FIELD SURVEY AND THAT TO THE BEST OF OUR KNOWLEDGE, INFORMATION AND BELIEF, IT CONFORMS TO THE BOARD OF LICENSURE FOR PROFESSIONAL LAND SURVEYORS CURRENT STANDARDS OF PRACTICE.

Samuel D. Glidden
 SAMUEL D. GLIDDEN, PLS NO. 2520
 6-25-2018
 DATE



Boundary & Topographic Survey
 On
 St. John Street, Portland, Maine
 Made for
Woodard & Curran, Inc.
 41 Hutchins Drive, Portland, Maine

OWEN HASKELL, INC.
 PROFESSIONAL LAND SURVEYORS
 390 U.S. ROUTE ONE, UNIT 10, FALMOUTH, MAINE 04105

DRAWN BY: SDG/JLW DATE: APRIL 2018 JOB NO.: 2018-019P
 CHECKED BY: SDG SCALE: 1" = 30' DRWG. NO.: 1