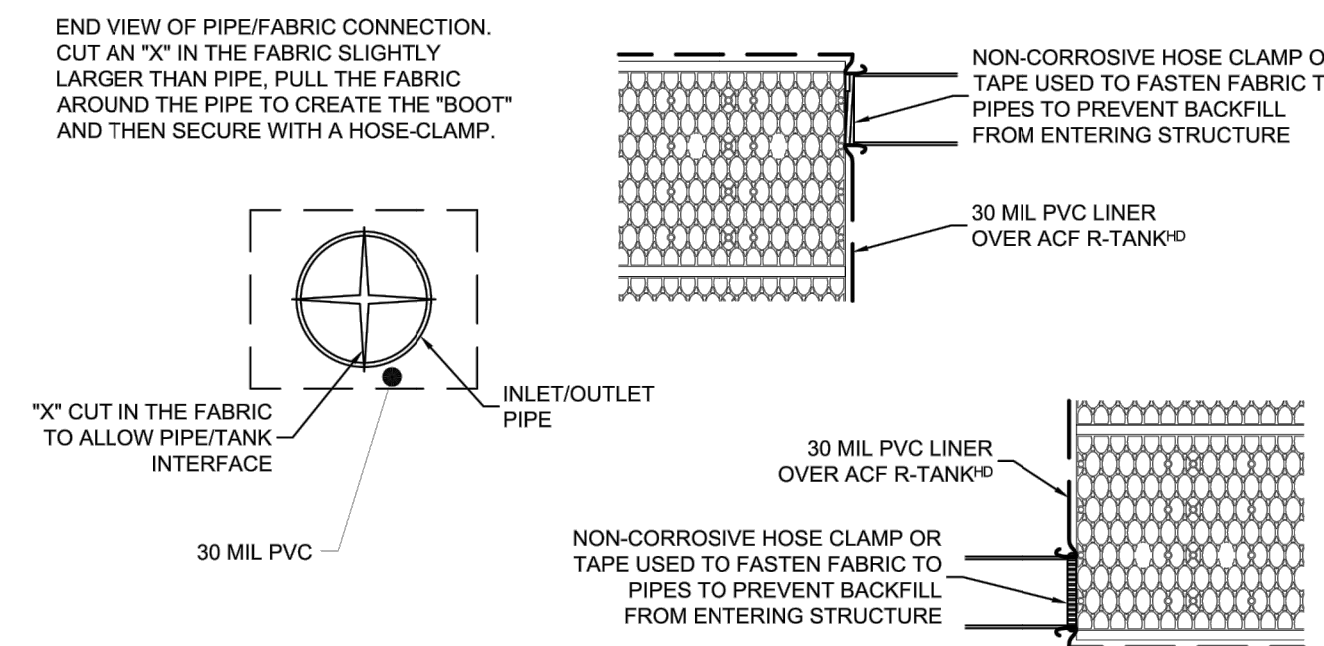


DOUBLE R-TANKHD-ELEVATION
N.T.S.

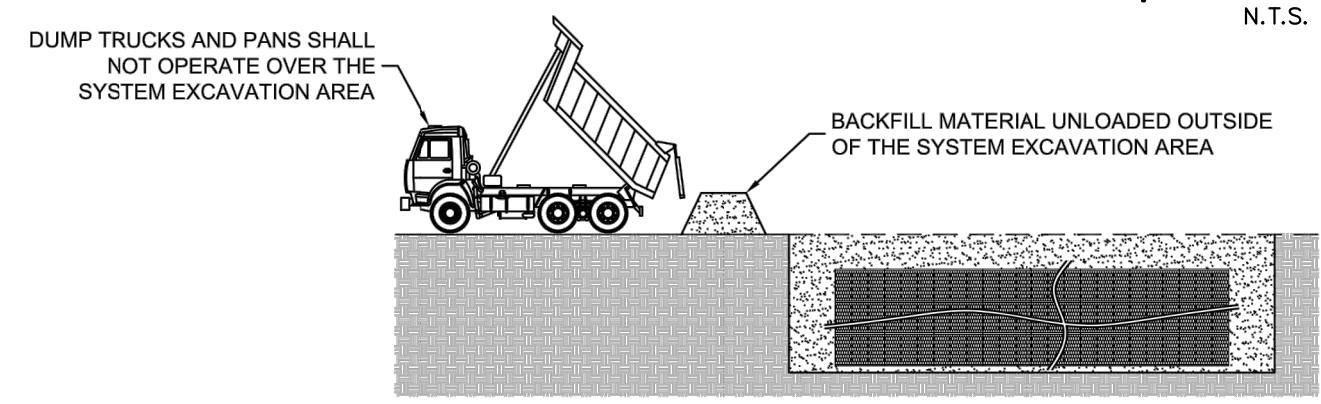
MODULE DATA

GEOMETRY:	LOAD RATING:
LENGTH = 28.15 IN. (715 MM)	33.4 PSI (MODULE ONLY)
WIDTH = 15.75 IN. (400 MM)	H20, (WITH ACF COVER SYSTEM)
HEIGHT = 33.96 IN. (860 MM)	MATERIAL:
TANK VOLUME = 6.86 CF	100% RECYCLED POLYPROPYLENE
STORAGE VOLUME = 6.25 CF	SMALL PLATES PER SEGMENT/TOTAL:
VOID INTERNAL VOLUME: 90%	5/10
VOID SURFACE AREA: 90%	

DOUBLE R-TANKHD-MODULE DETAIL
N.T.S.

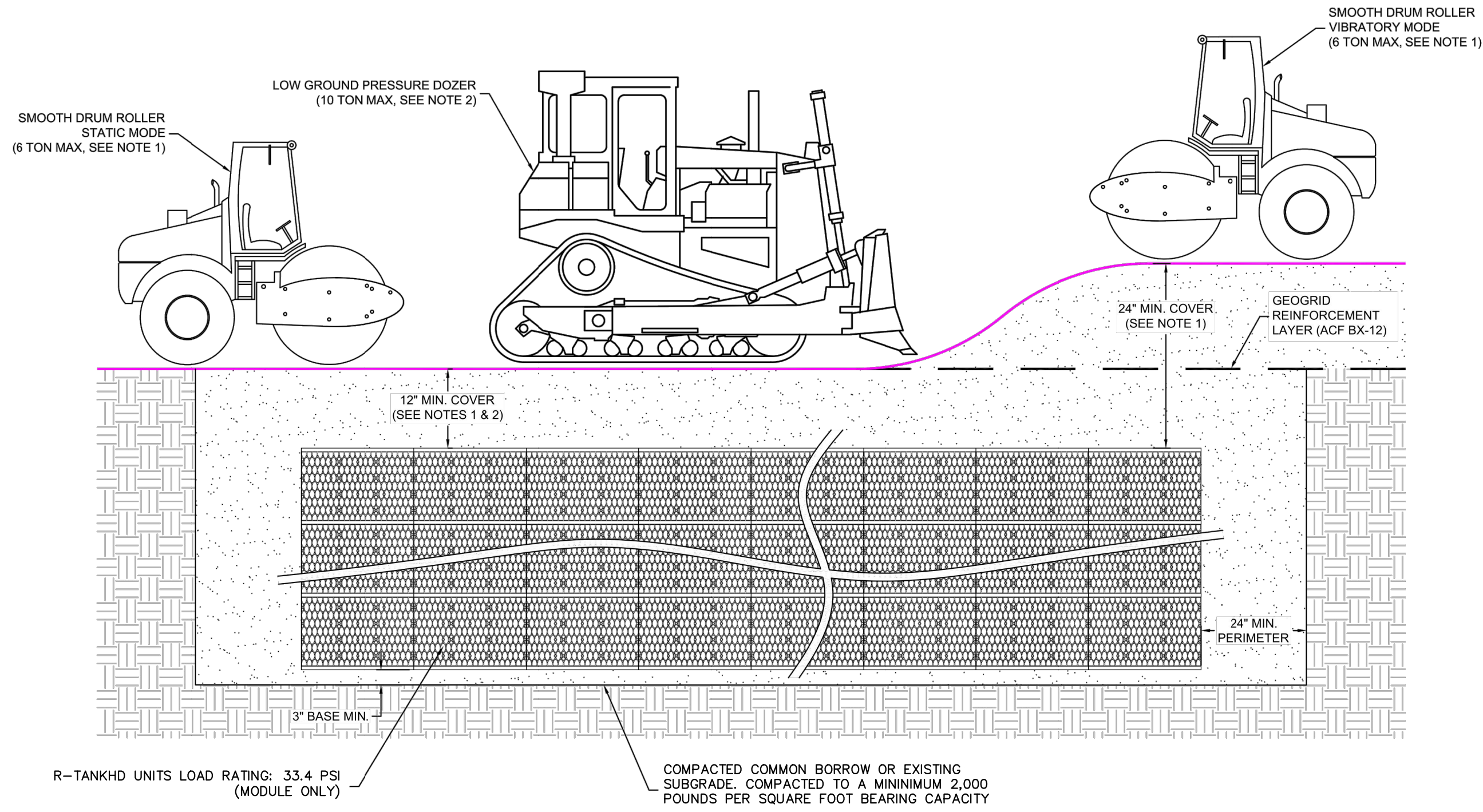


DOUBLE R-TANKHD TYPICAL INLET/OUTLET DETAIL
N.T.S.

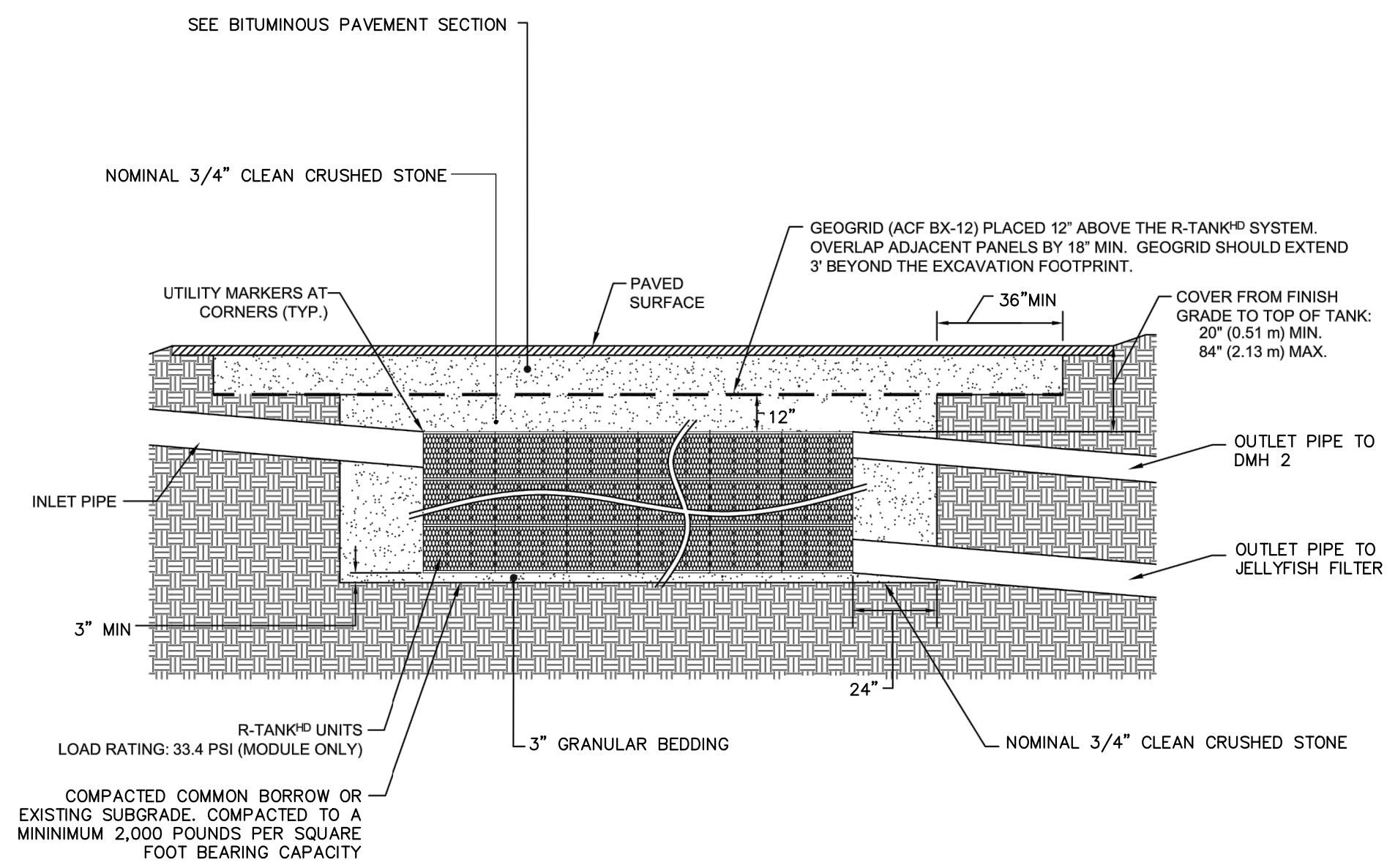


DUMP TRUCK DETAIL (SEE NOTE 3)

- NOTES:**
- FOLLOWING PLACEMENT OF SIDE BACKFILL, A UNIFORM 12" LIFT OF 3/4"-1 1/2" CLEAN CRUSHED, ANGULAR STONE SHALL BE PLACED OVER THE R-TANK AND LIGHTLY COMPACTED USING A WALK-BEHIND TRENCH ROLLER. ALTERNATELY, A ROLLER (MAXIMUM GROSS VEHICLE WEIGHT OF 6 TONS) MAY BE USED. ROLLERS MUST REMAIN IN STATIC MODE UNTIL A MINIMUM OF 24 INCH OF COVER HAS BEEN PLACED OVER THE MODULES. SHEEP FOOT ROLLERS SHOULD NOT BE USED.
 - ONLY LOW PRESSURE TIRE OR TRACK VEHICLES (LESS THAN 7 PSI AND OPERATING WEIGHT OF LESS THAN 20,000 LBS) SHALL BE OPERATED OVER THE R-TANK SYSTEM AT ANY TIME. WHERE NECESSARY, THE HEAVY EQUIPMENT SHOULD UNLOAD IN AN AREA ADJACENT TO THE R-TANK SYSTEM AND THE MATERIAL SHOULD BE MOVED OVER THE SYSTEM WITH TRACKED EQUIPMENT.
 - ENSURE THAT ALL UNRELATED CONSTRUCTION TRAFFIC IS KEPT AWAY FROM THE LIMITS OF EXCAVATION UNTIL THE PROJECT IS COMPLETE AND FINAL SURFACE MATERIALS ARE IN PLACE. NO NON-INSTALLATION RELATED LOADING SHOULD BE ALLOWED OVER THE R-TANK SYSTEM UNTIL THE FINAL DESIGN SECTION HAS BEEN CONSTRUCTED (INCLUDING PAVEMENT).

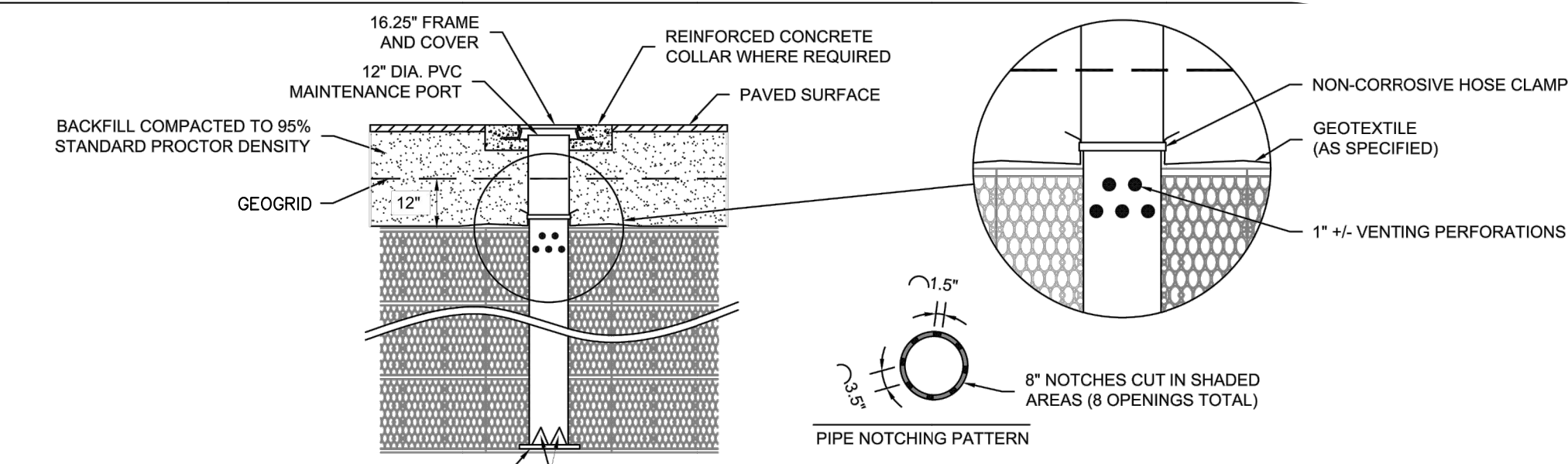


DOUBLE R-CONSTRUCTION EQUIPMENT COVER DETAIL
N.T.S.

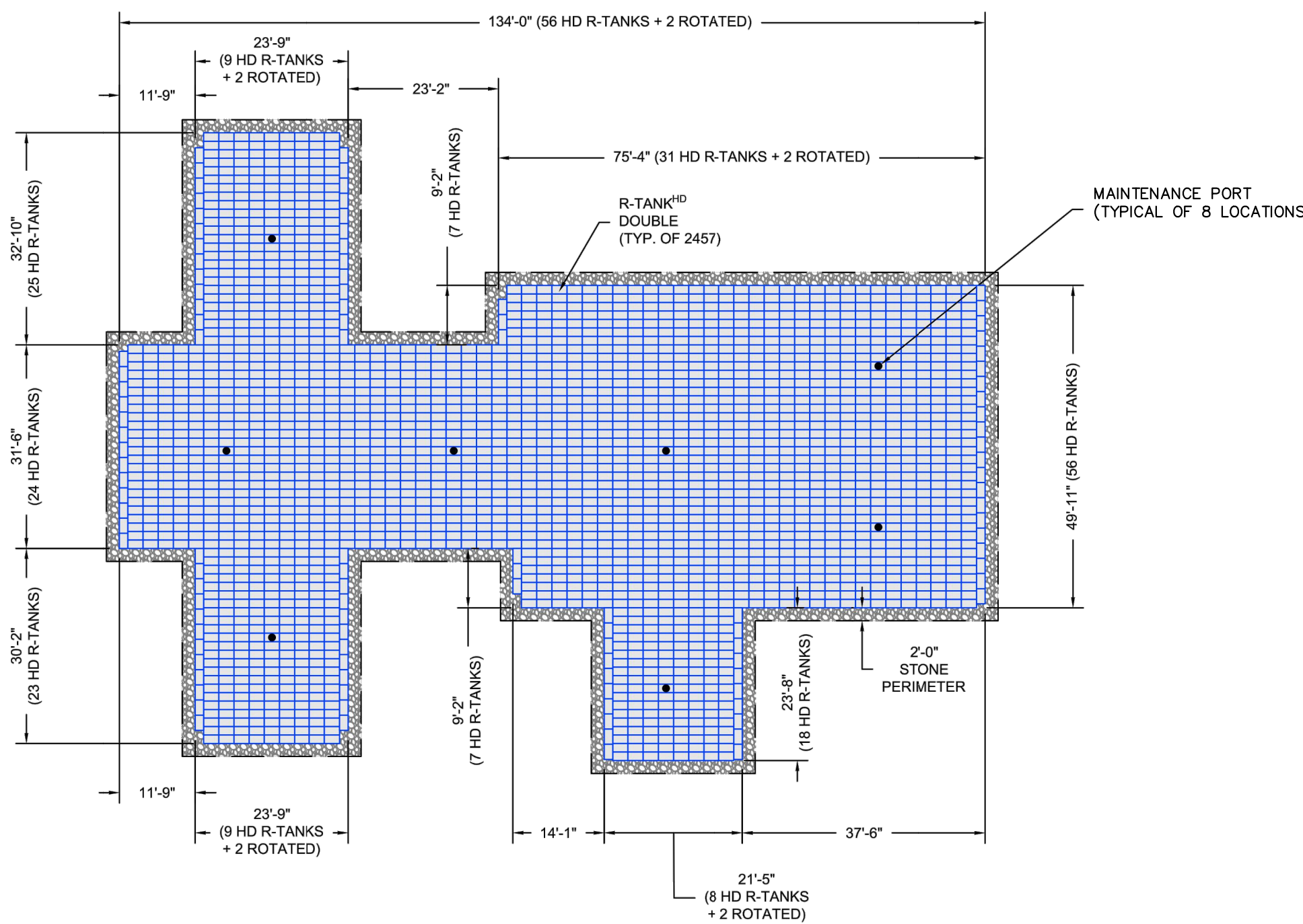


R-TANKHD & H-20 LOAD SECTION VIEW
N.T.S.

- NOTES:**
- THIS PORT IS USED TO PUMP WATER INTO THE SYSTEM AND RE-SUSPEND ACCUMULATED SEDIMENT SO THAT IT MAY BE PUMPED OUT.
 - MINIMUM REQUIRED MAINTENANCE INCLUDES A QUARTERLY INSPECTION DURING THE FIRST YEAR OF OPERATION AND A YEARLY INSPECTION THEREAFTER. FLUSH AS NEEDED.



R-TANKHD TYPICAL MAINTENANCE PORT
N.T.S.

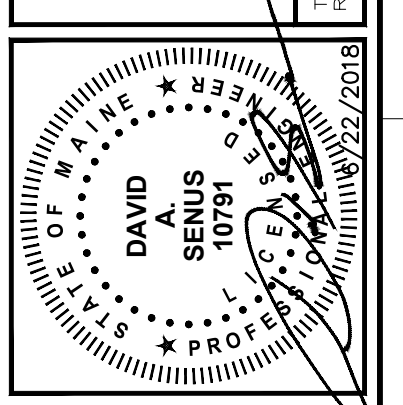


R-TANKHD TANK WRAP & EXCAVATION ENVELOPE DETAIL
N.T.S.

41 Hutchins Drive
Portland, Maine 04102
800.426.4362 | www.woodwardcurran.com

WOODWARD & CURRAN

COMMITMENT & INTEGRITY DRIVE RESULTS



NO.	DESCRIPTION	DATE	DESIGNED BY: DAS	DRAWN BY: BDM

CIVIL DETAILS - 5

MAINE MEDICAL CENTER
BRANFALL STREET
PORTLAND, ME 04102

MMC ST. JOHN STREET
EMPLOYEE PARKING GARAGE

JOB NO: 0231156-00
DATE: JUNE 22, 2018
SCALE: AS NOTED
SHEET: 16 OF 17

C-204