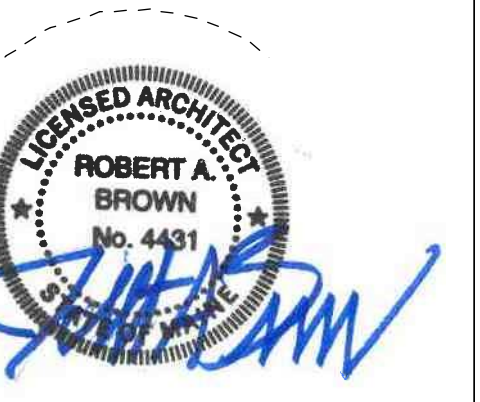


CONSULTANTS

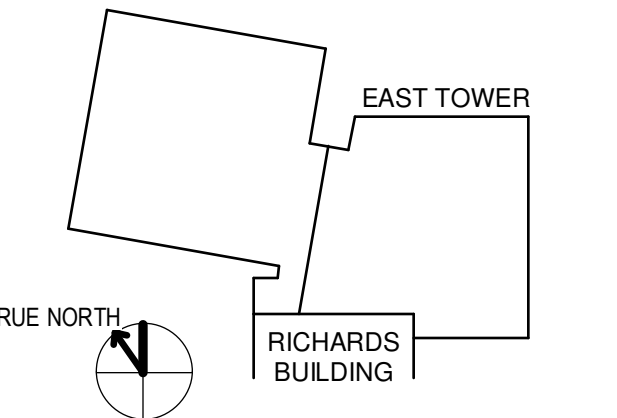
- CVL / LANDSCAPE ARCHITECT  
**Sebago Technics**  
75 John Roberts Road, Suite  
1A, South Portland ME 04106
- STRUCTURAL ENGR. BUILDING ENVELOPE CONSULTANT  
**Simpson Gumpertz & Heger Inc.**  
41 Seyon Street, Building 1, Suite 500,  
Waltham MA 02453
- MEP/ELECTRICAL ENGINEER  
**AKF Group LLC**  
99 Bedford Street, 2nd Floor, Boston MA 02111
- CONSTRUCTION MANAGER  
**Turner Construction**  
2 Seaport Lane, Suite 200, Boston MA 02210
- ELEVATOR CONSULTANT  
**VDA (Van Dusen & Associates)**  
101 Summer Street, 4th Floor, Boston MA  
02110
- COST ESTIMATOR  
**D. G. Jones International**  
3 Baldwin Green Common, Suite 202, Woburn MA 01801

PROJECT TITLE

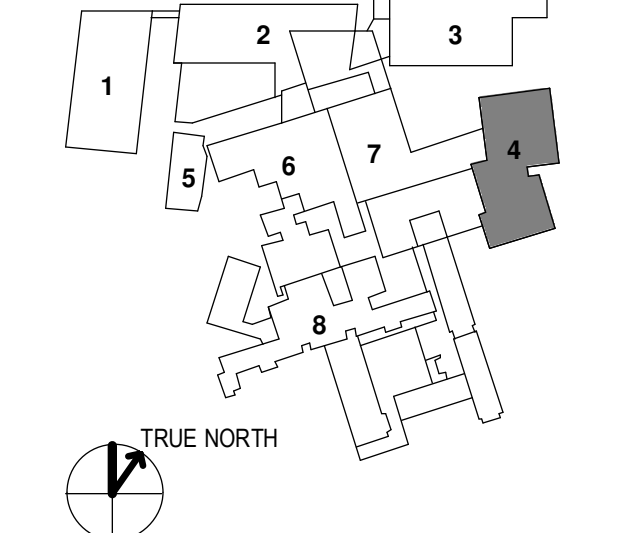
**East Tower 6 & 7  
Addition**  
22 Bramhall Street  
Portland ME 04102



KEY PLANS



- OVERALL KEY PLAN
- 1 - GILMAN GARAGE
  - 2 - CONGRESS STREET
  - 3 - VISITOR GARAGE
  - 4 - EAST TOWER
  - 5 - CENTRAL UTILITY PLANT
  - 6 - BEAN BUILDING
  - 7 - RICHARDS BUILDING
  - 8 - MAINE GENERAL BUILDING



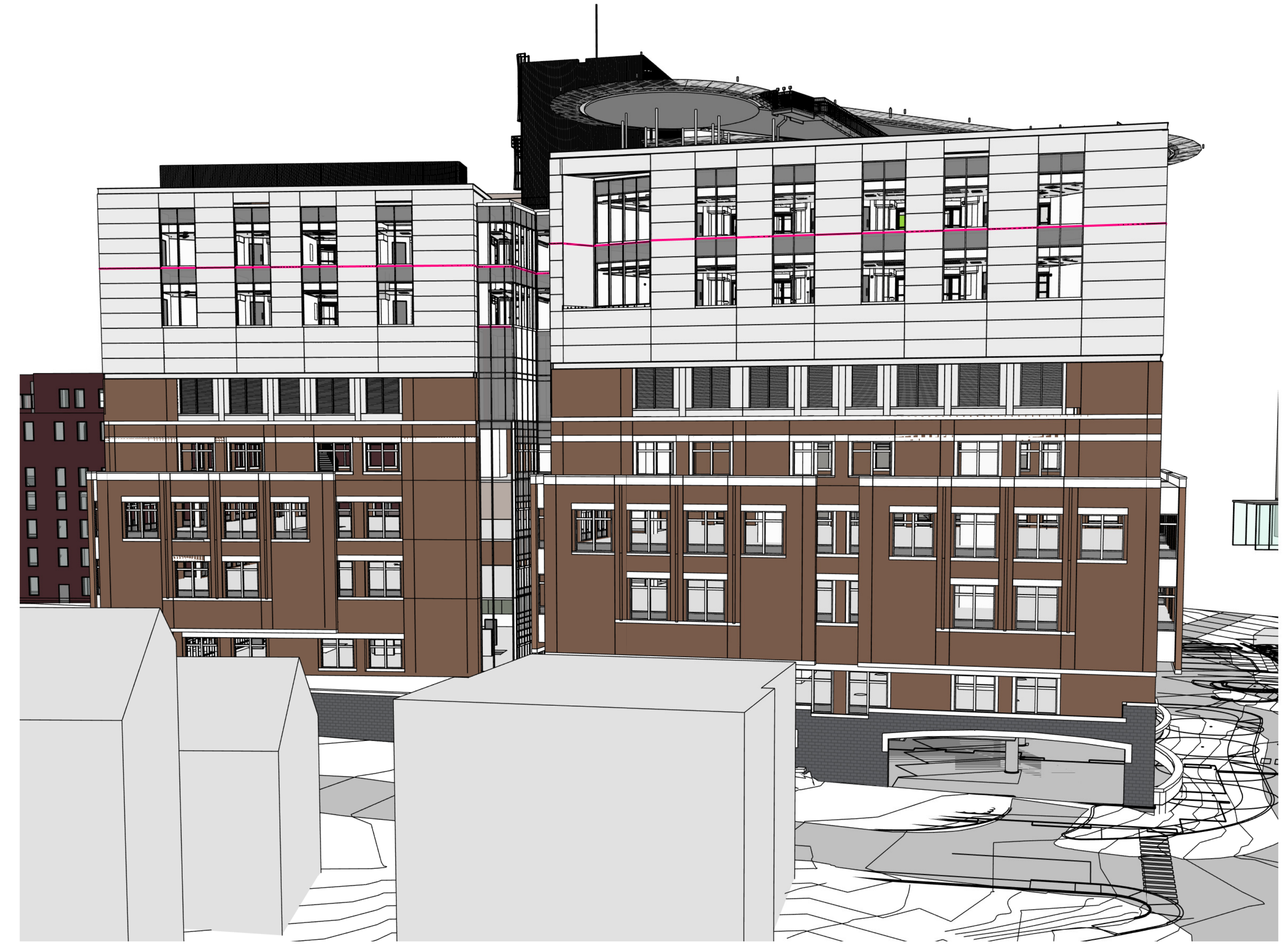
CONSTRUCTION DOCUMENTS  
JANUARY 26, 2018

NO	ISSUE	DATE
Job Number	152181.000	
Drawn	TEAM	
Checked		
Approved	JK	

TITLE  
**PERSPECTIVE  
VIEWS**

SHEET NUMBER

**A20-00**



② PERSPECTIVE VIEW FROM NORTH



③ PERSPECTIVE VIEW FROM WEST



① PERSPECTIVE VIEW FROM EAST