

EXISTING  
GARAGE  
PARKING

ADA  
12

REGULAR  
465

TOTAL  
477

EXISTING  
GARAGE  
PARKING

ADA  
6

REGULAR  
221

TOTAL  
227

(VAN 3)

---

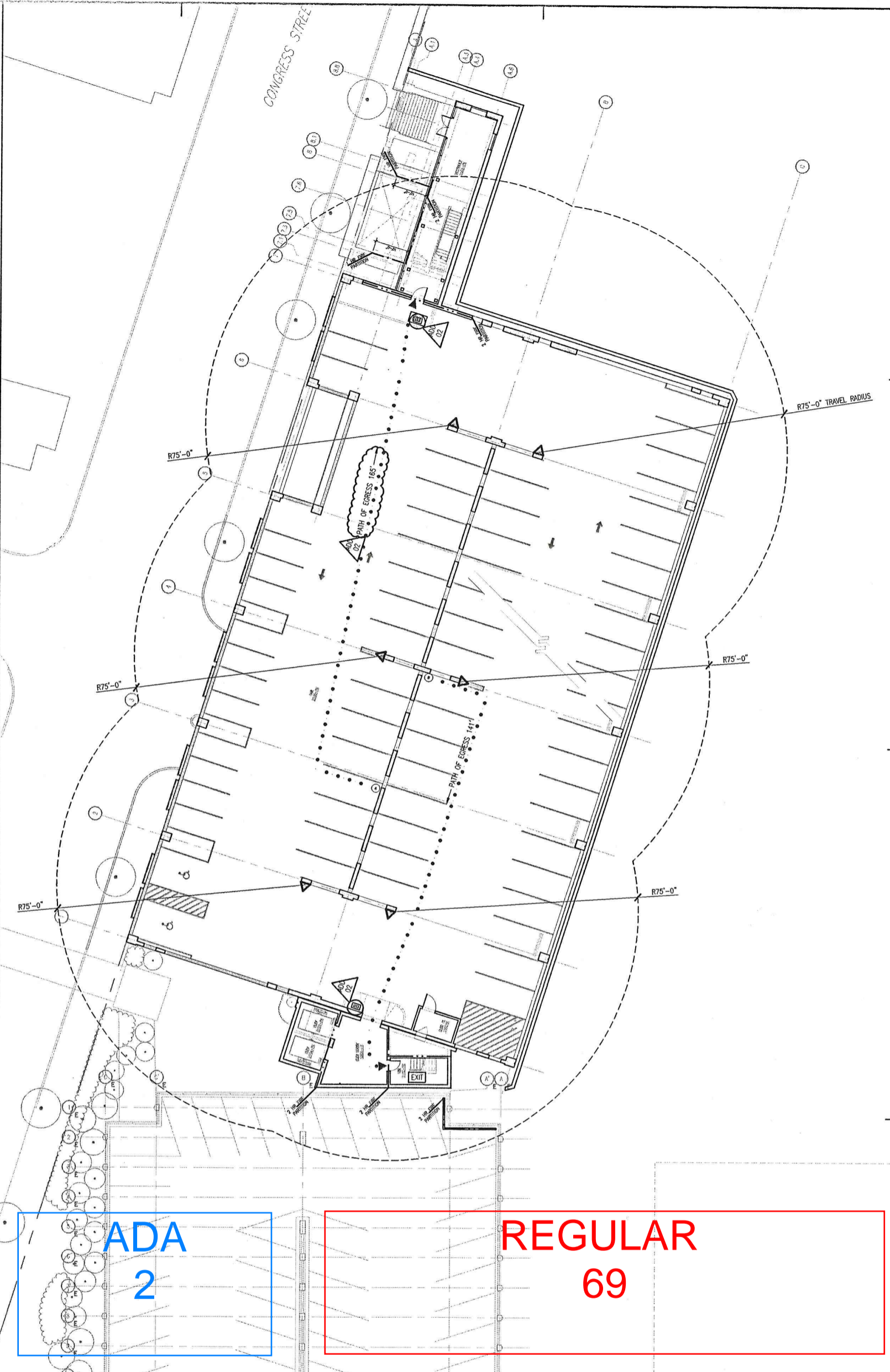
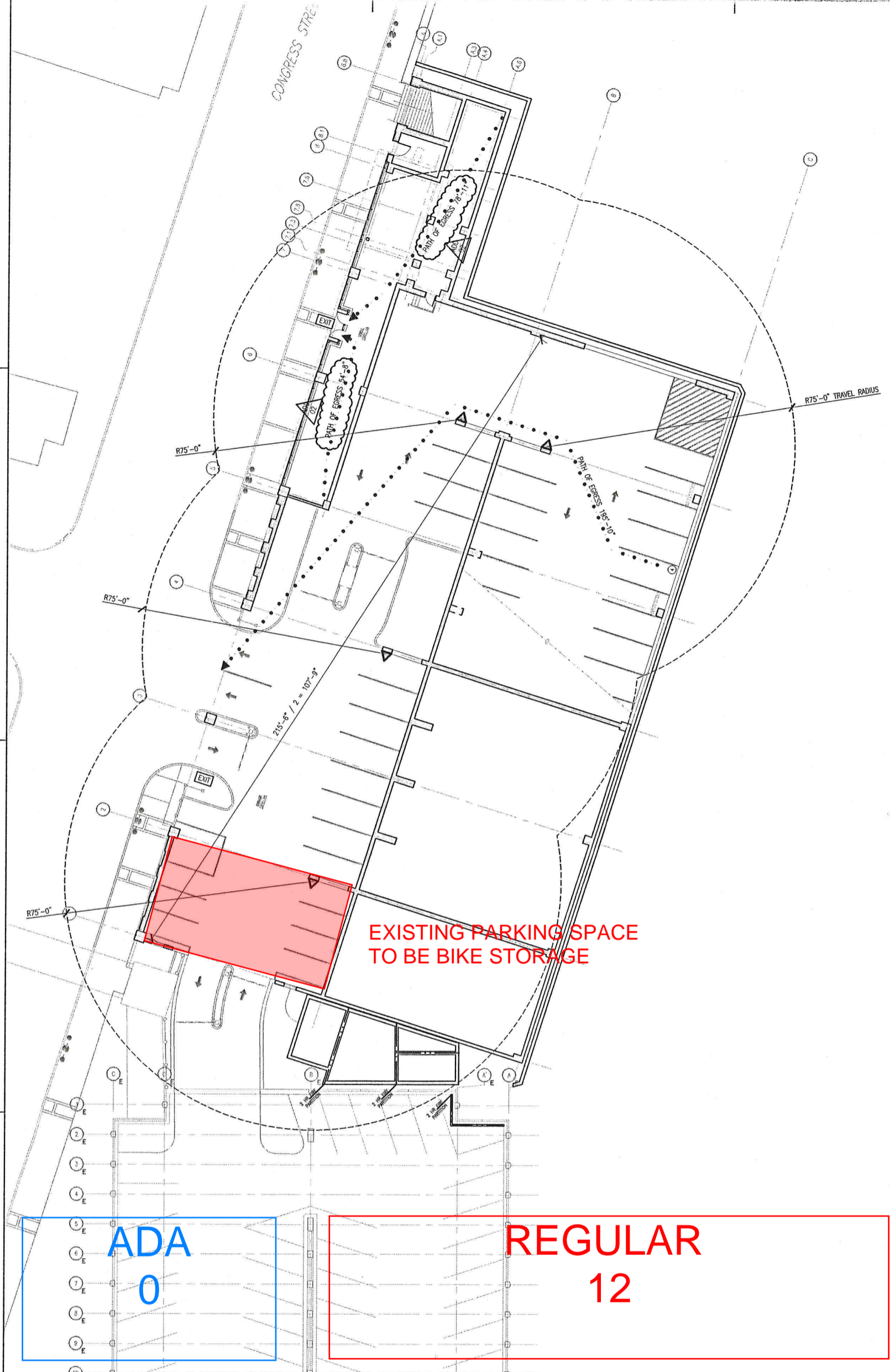
TOTAL  
GARAGE  
PARKING

ADA  
18

REGULAR  
686

TOTAL  
704

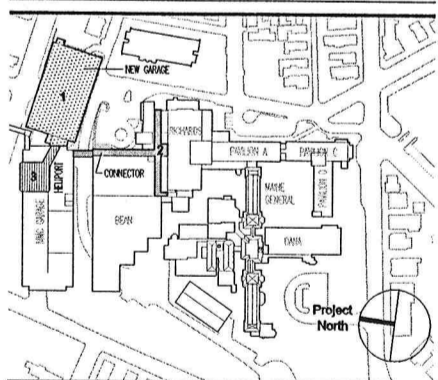
(VAN 3)



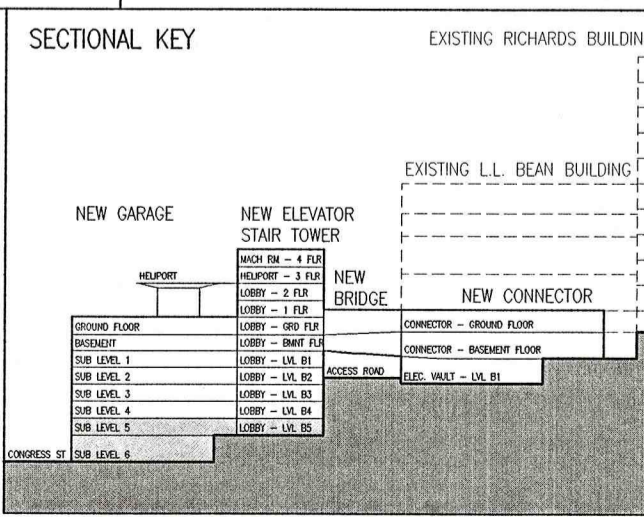
- General Notes:
- LIFE SAFETY LEGEND**
- 1. RATED PARTITIONS ARE INDICATED AS FOLLOWS:
    - 1HR FIRE RATED PARTITION
    - 2HR FIRE RATED PARTITION
    - NON-RATED SMOKE RESISTANT PARTITION
    - 1HR SMOKE BARRIER
    - 2HR RATED FIRE AND SMOKE BARRIER
  - ..... PATH OF EXIT TRAVEL
  - EXIT INDICATES EXIT LOCATION
  - SUITE (UNRATED)
  - CONNECTOR PROJECT SCOPE
  - EXISTING EGRESS STAR
  - POINT OF EGRESS ACCESS
  - PORTABLE FIRE EXTINGUISHER
  - EXIT SIGN
  - HOSE STATION

MARK	ISSUE DATE	DESCRIPTION
ADD 02	1/13/06	ADDENDUM NUMBER 02 - PACKAGE F
ADD 01	12/19/05	ADDENDUM NUMBER 01 - PACKAGE F
PERMIT	08/16/04	PERMIT SET
BID	08/26/04	BID SET

Issue Log



**TRO**  
 ARCHITECTURE  
 PLANNING  
 INTERIOR DESIGN  
 The Filchko Organization  
 80 Ridge Street  
 Newton, MA 02459-1134  
 617-552-9400



GARAGE CODE ANALYSIS - LIFE SAFETY			
SECTION	SECTION DESCRIPTION	REQUIREMENT	COMMENTS
NFPA 101 2003 - CONSTRUCTION: NA, OCCUPANCY: STORAGE			
6.1.13	CLASSIFICATION OF OCCUPANCY	CHAPTER 42	STORAGE
42.1.5	CLASSIFICATION OF HAZARD CONTENTS	COMPLY WITH SECTION 6.2	ORDINARY HAZARD
42.1.6	MINIMUM CONSTRUCTION REQUIREMENTS	NONE	
42.1.7	OCCUPANT LOAD (137 PEOPLE PER LEVEL BASED ON BOCA '99)	REFER TO THE BUILDING CODE OCCUPANCY SECTION	
42.2	MEANS OF EGRESS REQUIREMENTS	DOOR OPENINGS IN MEANS OF EGRESS SHALL NOT BE LESS THAN 32 CLEAR WIDTH	

TRAVEL DISTANCES		
TRAVEL	ALLOWED MAX.	PROVIDED COMMENTS
A TO EXIT	300' BOCA 400' NFPA	REFER TO PLANS BOCA 1999; EXIT ACCESS TRAVEL; TABLE 1006.5 REMOTE POINT TO NEAREST EXIT NFPA 101; 42.2.6 EXIT TRAVEL FROM ANY POINT TO EXIT
B TO EXIT	300' BOCA 400' NFPA	REFER TO PLANS BOCA; EXIT ACCESS TRAVEL; TABLE 1006.5 REMOTE POINT TO NEAREST EXIT NFPA 101; 42.2.6 EXIT TRAVEL FROM ANY POINT TO EXIT
REMOVEDNESS	> 5' MAX ENG OVERALL DIM.	REFER TO PLANS BOCA; 1006.4.1 REMOVEDNESS; EXITS OR EXIT ACCESS DOORS

GARAGE FIRE RATINGS - LIFE SAFETY		
ITEM DESCRIPTION	FIRE RATING	COMMENTS
NFPA 101 2003 - ORDINARY HAZARD STORAGE *		
EXTERIOR BEARING WALLS	1_HRS.	
INTERIOR BEARING WALLS	1_HRS.	
COLUMNS	1_HRS.	
BEAMS, GIRDERS, TRUSSES, AND ARCHES	1_HRS.	
FLOOR CONSTRUCTION INCLUDING BEAM	1_HRS.	
ROOF CONSTRUCTION	1_HRS.	
EXTERIOR NONBEARING WALLS	0_HRS.	

\* INFORMATION TAKEN FROM 1999 NFPA 220 TABLE 3-1 TYPE I(111) CONSTRUCTION

GARAGE FIRE RATINGS - BUILDING CODE			
ITEM DESCRIPTION	FIRE RATING	ISOLATER UL DESIGN NO.	W.R. GARAGE UL DESIGN NO.
EXTERIOR WALLS (FIRE SEPARATION 0-2)	2_HRS.	U905	U905
EXTERIOR WALLS (FIRE SEPARATION GREATER THAN 10')	1_HRS.	FW-D-0033	FW-D-0033
FIRE ENCLOSURE OF EXITS	2_HRS.	U411	U411
SHIFTS	2_HRS.	U415/U423	U415/U423
OTHER NONBEARING PARTITIONS	0_HRS.	N/A	N/A
WINDOW COLUMNS AND FRAMING	1_HRS.	UL X615	UL X615
STRUCTURAL MEMBERS SUPPORTING WALL	1_HRS.	UL N601	UL N601
FLOOR CONSTRUCTION INCLUDING BEAM	1_HRS.	UL D902	UL D925
ROOF CONSTRUCTION	1_HRS.	UL P825	UL P732
EXTERIOR NONBEARING WALLS	0_HRS.	UL D902	UL D925

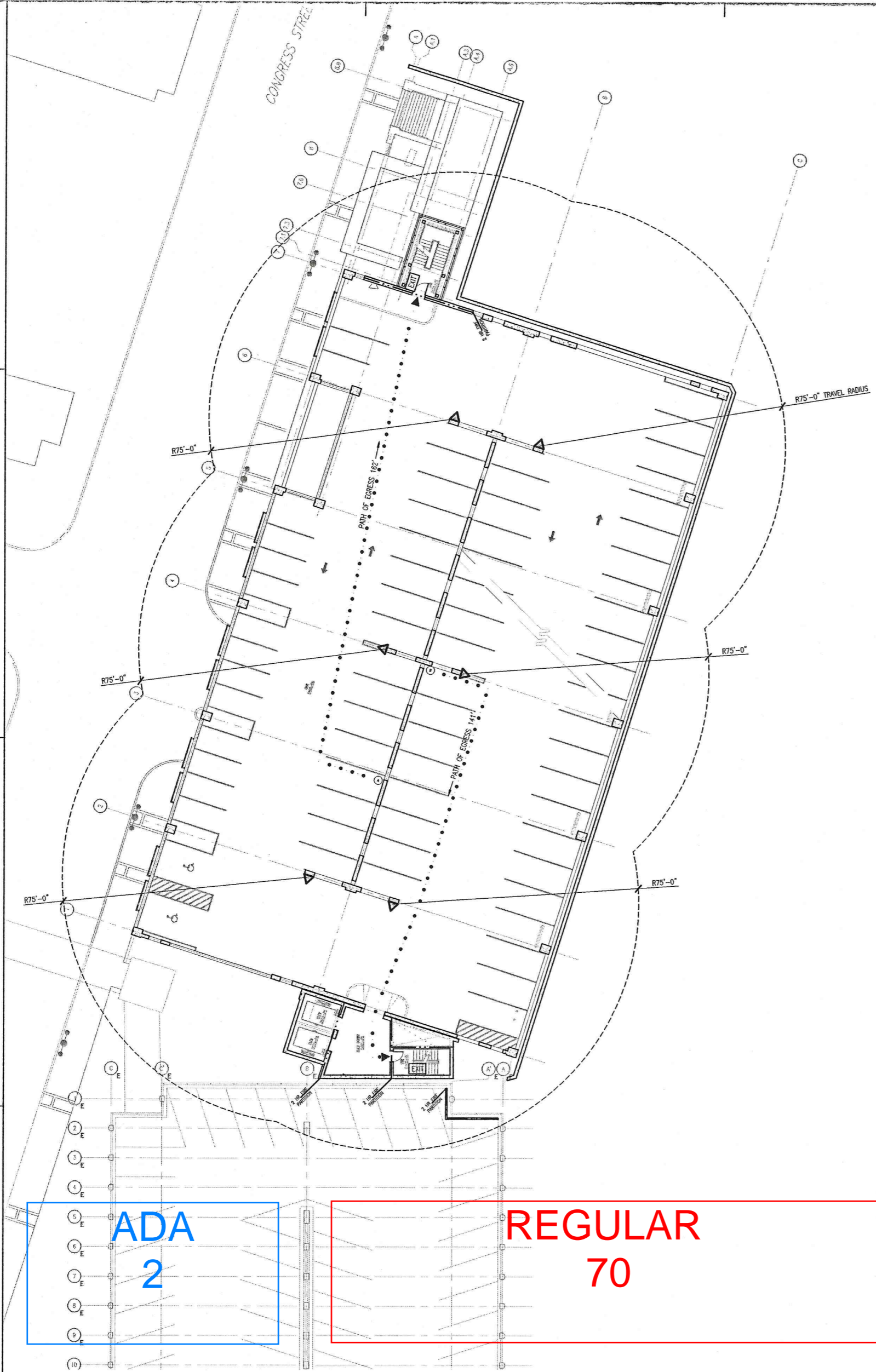
GARAGE CODE ANALYSIS - BUILDING CODE			
SECTION	SECTION DESCRIPTION	REQUIREMENT	COMMENTS
BOCA 1999 - CONSTRUCTION: TYPE 2B, OCCUPANCY: S-2			
SECTION 302.1, 308.3	USE GROUP	S-2 STORAGE	ADDITION TO EXISTING PARKING FACILITY
SECTION 400.0	CONSTRUCTION CLASSIFICATION	2B	EXISTING AND NEW ADDITION
SECTION 406.4	HEIGHT AND AREA LIMITATION FOR OPEN PARKING STRUCTURES	10 STORIES + 100' HT. 50,000 SQ.FT. AREA	EXISTING GARAGE PERIMETER EQUALS 1,579 LF. CRESCENT ST + CONGRESS STREET PERIMETER OF THE ADDITION = 600/1579 = 53.8% - 25% PER 500.2 = 28.8%. 28.8% x 25 = 57.6%. 57.6% x 100 = 5,760 SQ.FT. A POSSIBLE PERMETER INCREASE OF 28,000 - 50,000 = 28,000 - 78,000 OF ALLOWABLE SQUARE FOOTAGE. ACTUAL SQUARE FOOTAGE OF GARAGE AND LINK = 69,300 SQ.FT.
TABLE 1008.1.2	MAXIMUM FLOOR AREA ALLOWANCES PER OCCUPANT	200 GROSS SQUARE FEET PER OCCUPANT	27,286 SF PER LEVEL. 27,286 DIVDED BY 200 = 136.43 OR 137 PEOPLE PER FLOOR
TABLE 1010.2	MINIMUM NUMBER OF EXITS PER OCCUPANT LOAD	2 EXITS FOR 500 OR LESS PEOPLE	137 PEOPLE PER FLOOR DIVIDED BY 2 EXITS = 68.5 OR 69 PEOPLE PER EXIT
TABLE 1009.4	EGRESS CAPACITY	EGRESS CAPACITY SHALL NOT BE LESS THAN THE SUM OF THE TWO	69 PEOPLE PER EXIT, PER LEVEL. X2 = 138 PEOPLE
TABLE 1009.2	EGRESS WIDTH PER OCCUPANT	UN-SPRINKLED, USE GROUP S	STAIR: 138 X 3" = 41.4" REQ. 45.5" PROVIDED DOOR: 138 X 2" = 27.6" REQ. 41.25" PROVIDED
TABLE 1010.2	NUMBER OF EXITS REQUIRED PER LEVEL	REQUIRED: 2 PROVIDED: 2	
TABLE 1006.5	EXIT ACCESS TRAVEL REQUIRED MAX. PROVIDED MAX	300' FT. (MAX) 165' FT. (LONGEST)	SEE PLANS

**Maine Medical Center**  
 Pkg F - Garage / Vault / Conn / Heliport  
 Portland, ME MMC Project No. 21845

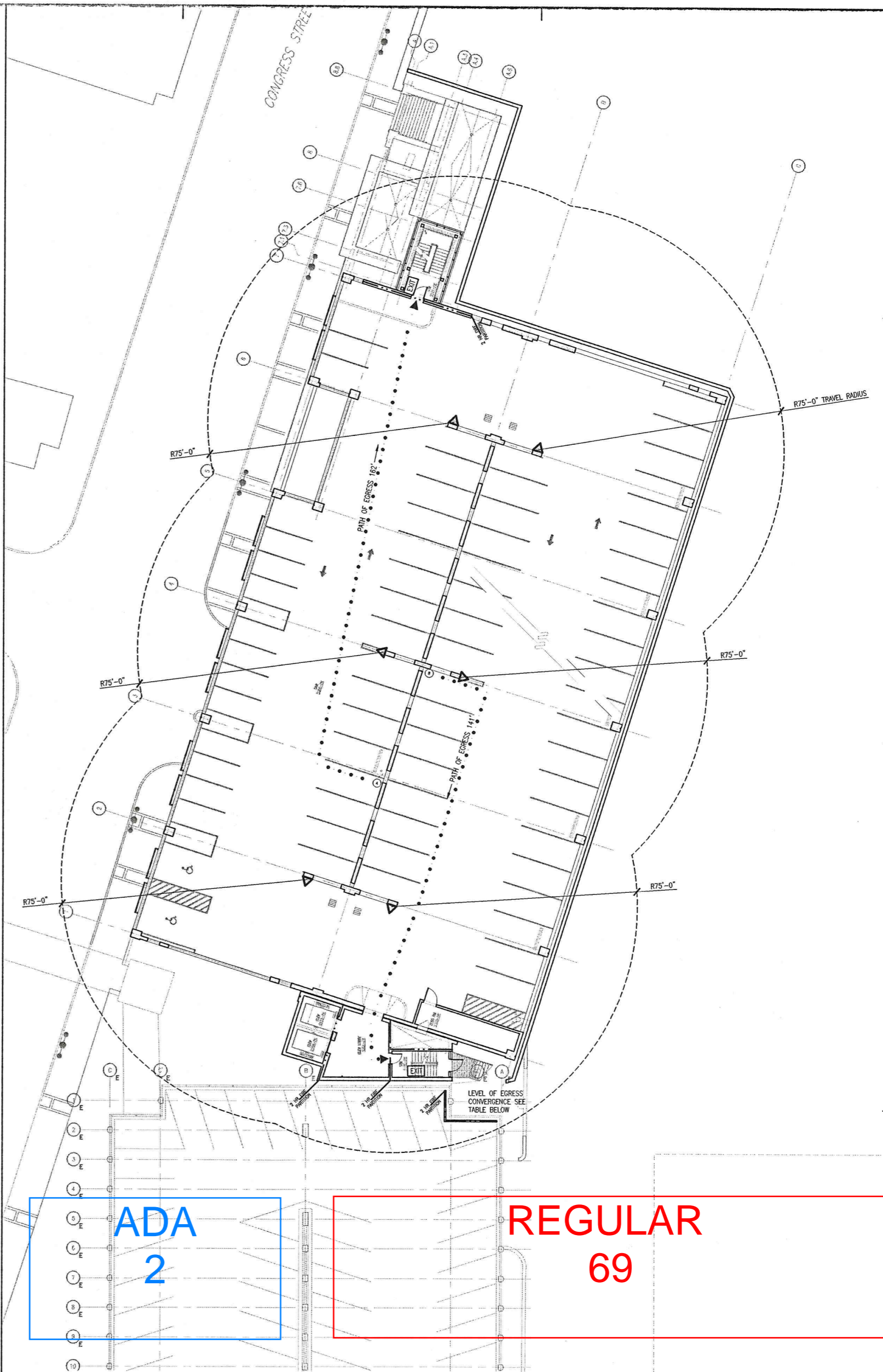
**Sub Basement Levels 5 & 6 GARAGE LIFE SAFETY PLANS**

Commission No. 4678 Date Issued 09/26/04  
 Scale 1/16" = 1'-0" Sheet Number PKG-F  
 Drawn By NB  
 Approved By BS  
 Project No. 48701001.02mg  
 Copyright © 2004 The Filchko Organization

**G100**



B4 SUB-BASEMENT LEVEL 4 LIFE SAFETY PLAN SCALE: 1/16" = 1'-0"

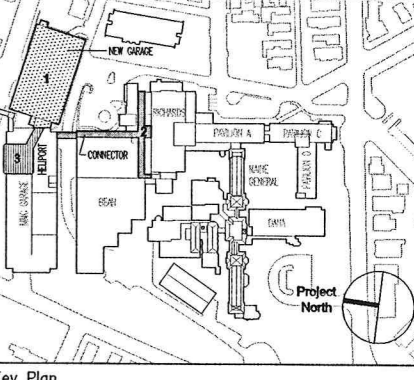


D4 SUB-BASEMENT LEVEL 3 LIFE SAFETY PLAN SCALE: 1/16" = 1'-0"

- General Notes:
- LIFE SAFETY LEGEND**
- 1. RATED PARTITIONS ARE INDICATED AS FOLLOWS:
  - 1HR FIRE RATED PARTITION
  - 2HR FIRE RATED PARTITION
  - NON-RATED SMOKE RESISTANT PARTITION
  - 1HR SMOKE BARRIER
  - 2HR RATED FIRE AND SMOKE BARRIER
  - ... PATH OF EXIT TRAVEL
  - EXIT INDICATES EXIT LOCATION
  - SUITE (UNRATED)
  - CONNECTOR PROJECT SCOPE
  - EXISTING EGRESS STAIR
  - ... POINT OF EGRESS ACCESS
  - △ PORTABLE FIRE EXTINGUISHER
  - EXIT SIGN
  - HOSE STATION

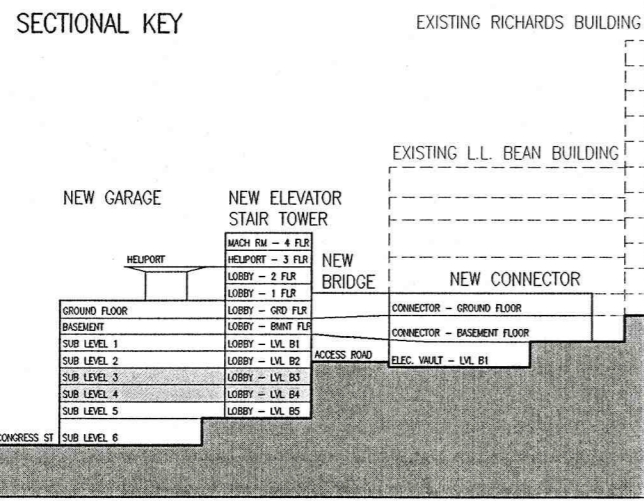
MARK	ISSUE DATE	DESCRIPTION
ADD 01	12/19/05	ADDENDUM NUMBER 01 - PACKAGE F
PERMIT	08/18/04	PERMIT SET
BID	08/26/04	BID SET

Issue Log



Key Plan

**TRO**  
ARCHITECTURE  
PLANNING  
ENGINEERING  
INTERIOR DESIGN  
The Fitchie Organization  
80 Bridge Street  
Newton, MA 02459-1184  
617-689-9100



GARAGE CODE ANALYSIS - LIFE SAFETY			
SECTION	SECTION DESCRIPTION	REQUIREMENT	COMMENTS
6.1.13	CLASSIFICATION OF OCCUPANCY	CHAPTER 42	STORAGE
42.1.5	CLASSIFICATION OF HAZARD CONTENTS	COMPLY WITH SECTION 6.2	ORDINARY HAZARD
42.1.6	MINIMUM CONSTRUCTION REQUIREMENTS	NONE	
42.1.7	OCCUPANT LOAD REQUIREMENTS	REFER TO THE BUILDING CODE OCCUPANCY SECTION	THE OCCUPANT LOAD SHALL BE DETERMINED ON THE BASIS OF THE MAXIMUM PROBABLE POPULATION OF THE SPACE
42.2	MEANS OF EGRESS REQUIREMENTS	DOOR OPENINGS IN MEANS OF EGRESS SHALL NOT BE LESS THAN 32 CLEAR WIDTH	

GARAGE FIRE RATINGS - LIFE SAFETY		
ITEM DESCRIPTION	FIRE RATING	COMMENTS
EXTERIOR BEARING WALLS	1-HRS.	
INTERIOR BEARING WALLS	1-HRS.	
COLUMNS	1-HRS.	
BEAMS, GIRDERS, TRUSSES, AND ARCHES	1-HRS.	
FLOOR CONSTRUCTION	1-HRS.	
ROOF CONSTRUCTION	1-HRS.	
EXTERIOR NONBEARING WALLS	0-HRS.	

GARAGE FIRE RATINGS - BUILDING CODE			
ITEM DESCRIPTION	FIRE RATING	ISOLATEX UL DESIGN NO.	W.R. GRADE UL DESIGN NO.
EXTERIOR WALLS (FIRE SEPARATION 0-3)	2-HRS.	U905	U905
EXTERIOR WALLS (FIRE SEPARATION GREATER THAN 10')	1-HRS.	FW-D-0033	FW-D-0033
FIRE ENCLOSURE OF EXITS	2-HRS.	U411	U411
SHAFTS	2-HRS.	U416/U423	U416/U423
OTHER NONBEARING PARTITIONS	0-HRS.	N/A	N/A
INTERIOR COLUMNS AND FRAMING	1-HRS.	UL X815	UL X815
STRUCTURAL MEMBERS SUPPORTING WALL	1-HRS.	UL N801	UL N801
FLOOR CONSTRUCTION INCLUDING BEAM	1-HRS.	UL D902	UL D925
ROOF CONSTRUCTION INCLUDING BEAMS, TRUSSES AND FRAMING, ARCHES AND ROOF DECK	1-HRS.	UL P825	UL P732
15' OR LESS IN HEIGHT TO LOWEST MEMBER	0-HRS.	UL D902	UL D925

GARAGE CODE ANALYSIS - BUILDING CODE			
SECTION	SECTION DESCRIPTION	REQUIREMENT	COMMENTS
302.1, 308.3	USE GROUP CLASSIFICATION	S-2 STORAGE	ADDITION TO EXISTING PARKING FACILITY
SECTION 405.1	CONSTRUCTION CLASSIFICATION	2B	EXISTING AND NEW ADDITION
SECTION 406.4	OPEN PARKING STRUCTURES: GENERAL HEIGHT AND AREA LIMITATION FOR OPEN PARKING STRUCTURES	10 STORIES - 100' HT. 50,000 SQ.FT. AREA	OPEN PARKING STRUCTURES ARE NOT REQUIRED TO CONFORM TO SECTION 406.0 FOR PUBLIC GARAGES
SECTION 506.2	STREET FRONTAGE INCREASE	WHERE A STRUCTURE HAS MORE THAN 25% OF THE BUILDING PERIMETER FRONTING A STREET	EXISTING GARAGE PERIMETER EQUALS 1,579 LF. CRESCENT ST + CONGRESS STREET PERIMETER OF THE ADDITION = 850/1,579 = 53.9% - 25% PER AREA LIMITATIONS OF TABLE 503 SHALL BE INCREASED 2% FOR EVERY 1% OF SUCH EXCESS FRONTAGE
TABLE 1008.1.2	MAXIMUM FLOOR AREA ALLOWANCES PER OCCUPANT	200 GROSS SQUARE FEET PER OCCUPANT	27,286 SF PER LEVEL - 27,286 DIVIDED BY 200=136.43 OR 137 PEOPLE PER FLOOR
TABLE 1010.2	MINIMUM NUMBER OF EXITS FOR OCCUPANT LOAD	2 EXITS FOR 500 OR LESS PEOPLE	137 PEOPLE PER FLOOR DIVIDED BY 2 EXITS = 68.5 OR 69 PEOPLE PER EXIT
TABLE 1009.4	EGRESS CONVERGENCE (OCCURS @ SUBLEVEL 2 CRESCENT ST. EXIT)	EGRESS CAPACITY SHALL NOT BE LESS THAN THE SUM OF THE TWO FLOORS	69 PEOPLE PER EXIT, PER LEVEL, X2 = 138 PEOPLE
TABLE 1009.2	EGRESS WIDTH PER OCCUPANT	UN-SPRINKLERED, USE GROUP S STAIRWAYS ARE ALLOWED 3" PER PERSON. 2" PER PERSON PROVIDED: 2	STAR: 138 X 3" = 414" REQ. 45.5" PROVIDED DOOR: 138 X 2" = 276" REQ. 41.25" PROVIDED
TABLE 1010.2	NUMBER OF EXITS REQUIRED PER LEVEL	REQUIRED: 2	
TABLE 1006.5	EXIT ACCESS TRAVEL - REQUIRED MAX	300' FT. (MAX) 185' FT. (LOWEST)	SEE PLANS

TRAVEL DISTANCES		
TRAVEL	ALLOWED MAX.	PROVIDED
A TO EXIT	300' BOCA 400' NFPA	REFER TO PLANS
B TO EXIT	300' BOCA 400' NFPA	REFER TO PLANS
REMOVEDNESS	> 1/2 MAX DWG. OVERALL DIM.	REFER TO PLANS

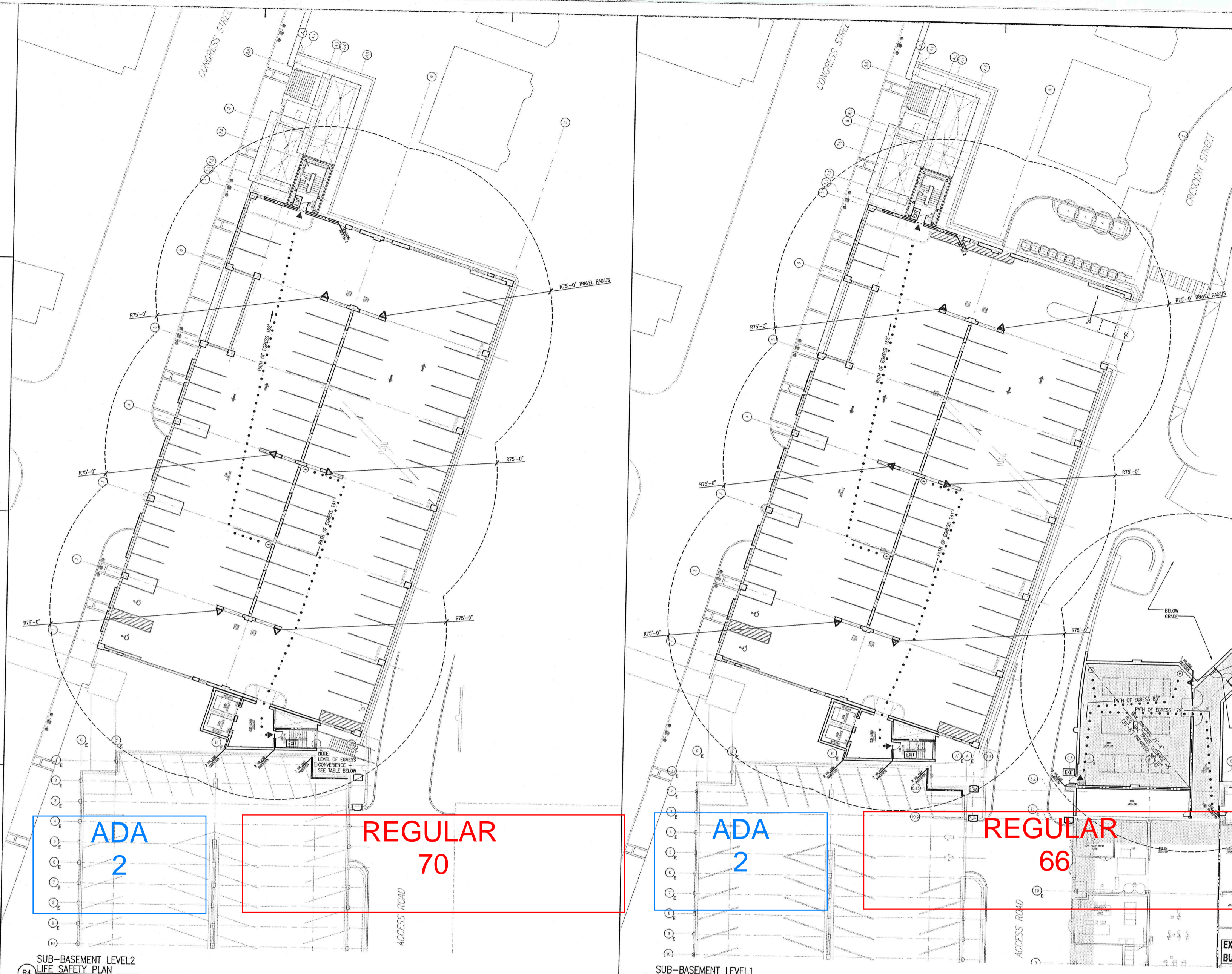
\* INFORMATION TAKEN FROM 1999 NFPA 220 TABLE 3-1 TYPE II(11) CONSTRUCTION

**Maine Medical Center**  
Pkg F - Garage / Vault / Conn / Heliport  
Portland, ME MMC Project No. 21845

Drawing Title:  
**SUB BASEMENT LEVEL 4 & 3 GARAGE LIFE SAFETY PLANS**

Scale: 1/16" = 1'-0"  
Scale: 1/8" = 1'-0"  
Scale: 1/4" = 1'-0"  
Scale: 1/2" = 1'-0"  
Scale: 3/4" = 1'-0"  
Scale: 1" = 1'-0"

Approved By: JY/NB  
Checked By: GS  
Drawing No: 48792101.LWS  
Date Issued: 08/26/04  
Sheet Number: PKG-F  
G101.1



- General Notes:
- LIFE SAFETY LEGEND**
- 1. RATED PARTITIONS ARE INDICATED AS FOLLOWS:
  - 1HR FIRE RATED PARTITION
  - 2HR FIRE RATED PARTITION
  - NON-RATED SMOKE RESISTANT PARTITION
  - 1HR SMOKE BARRIER
  - 2HR RATED FIRE AND SMOKE BARRIER
  - ... PATH OF EXIT TRAVEL
  - EXIT INDICATES EXIT LOCATION
  - SUITE (UNRATED)
  - CONNECTOR PROJECT SCOPE
  - EXISTING EGRESS STAIR
  - ... POINT OF EGRESS ACCESS
  - △ PORTABLE FIRE EXTINGUISHER
  - EXIT SIGN
  - HOSE STATION

MARK	ISSUE DATE	DESCRIPTION
ADD 01	12/19/05	ADDENDUM NUMBER 01 - PACKAGE F
PERMIT	09/18/04	PERMIT SET
RD	09/26/04	RD SET

Issue Log

**ADA 2**

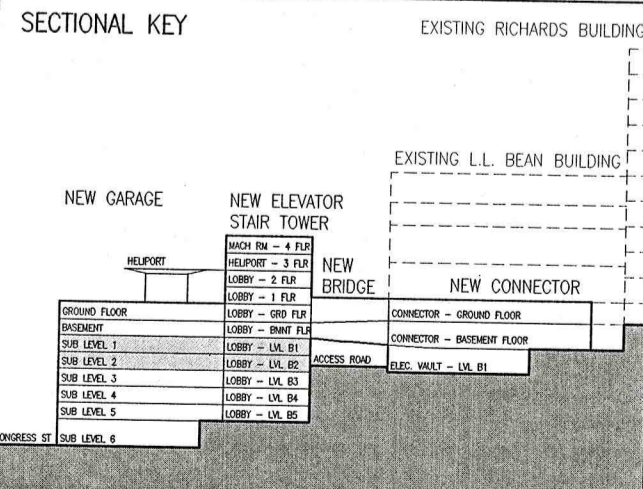
**REGULAR 70**

**ADA 2**

**REGULAR 66**

**B4** SUB-BASEMENT LEVEL 2 LIFE SAFETY PLAN SCALE: 1/16" = 1'-0"

**D4** SUB-BASEMENT LEVEL 1 LIFE SAFETY PLAN SCALE: 1/16" = 1'-0"



**GARAGE CODE ANALYSIS - LIFE SAFETY**  
NFPA 101 2003 - CONSTRUCTION: NA, OCCUPANCY: STORAGE

SECTION	SECTION DESCRIPTION	REQUIREMENT	COMMENTS
6.1.1.3	CLASSIFICATION OF OCCUPANCY	CHAPTER 42	STORAGE
42.1.5	CLASSIFICATION OF HAZARD CONTENTS	COMPLY WITH SECTION 6.2	ORDINARY HAZARD
42.1.6	MINIMUM CONSTRUCTION REQUIREMENTS	NONE	
42.1.7	OCCUPANT LOAD	137 PEOPLE PER LEVEL BASED ON BOCA 999	REFER TO THE BUILDING CODE OCCUPANCY SECTION
42.2	MEANS OF EGRESS REQUIREMENTS	DOOR OPENINGS IN MEANS OF EGRESS SHALL NOT BE LESS THAN 32 CLEAR WIDTH	

**TRAVEL DISTANCES**

TRAVEL	ALLOWED MAX.	PROVIDED	COMMENTS
A TO EXIT	300' BOCA	REFER TO PLANS	BOCA 1009.4 EXIT ACCESS TRAVEL; TABLE 1006.5 REMOTE POINT TO NEAREST EXIT
B TO EXIT	400' NFPA	REFER TO PLANS	BOCA 1011.1 EXIT ACCESS TRAVEL; TABLE 1006.5 REMOTE POINT TO NEAREST EXIT
REMOVEDNESS	> 3' MAX DWG. CLEARANCE	REFER TO PLANS	BOCA 1006.4.1 REMOVEDNESS; EXITS OR EXIT ACCESS DOORS

**GARAGE FIRE RATINGS - LIFE SAFETY**  
NFPA 101 2003 - ORDINARY HAZARD STORAGE \*

ITEM DESCRIPTION	FIRE RATING	COMMENTS
EXTERIOR BEARING WALLS	-1 HRS.	
INTERIOR BEARING WALLS	-1 HRS.	
COLUMNS	-1 HRS.	
BEAMS, GIRDERS, TRUSSES, AND ARCHES	-1 HRS.	
FLOOR CONSTRUCTION INCLUDING BEAM	-1 HRS.	
ROOF CONSTRUCTION INCLUDING BEAMS, TRUSSES AND FRAMING, ARCHES AND ROOF DECK	-1 HRS.	
EXTERIOR NONBEARING WALLS	-0 HRS.	

\* INFORMATION TAKEN FROM 1999 NFPA 220 TABLE 3-1 TYPE III(11) CONSTRUCTION

**GARAGE FIRE RATINGS - BUILDING CODE**  
BOCA 1999 - TABLE 602 & 705.2 CONSTRUCTION TYPE 2B

ITEM DESCRIPTION	FIRE RATING	ISOLATE UL DESIGN NO.	W.R. GRADE UL DESIGN NO.	COMMENTS
EXTERIOR WALLS (FIRE SEPARATION 4-5)	-2 HRS.	U905	U905	PROVIDE SILICONE FROSTPROOFING TO PRECAST PANEL JOINTS AT ELEVATOR TOWER TO ACHIEVE MINIMUM FIRE RATINGS SPECIFIED ON DRAWINGS
EXTERIOR WALLS (FIRE SEPARATION GREATER THAN 10')	-1 HRS.	U905	U905	
FIRE ENCLOSURE OF EXITS	-2 HRS.	U411	U411	
SHEDS	-2 HRS.	U415/U423	U415/U423	SEE PLANS FOR LOCATIONS
OTHER NONBEARING PARTITIONS	-0 HRS.	N/A	N/A	
INTERIOR COLUMNS AND FRAMING	-1 HRS.	UL X615	UL X615	
STRUCTURAL MEMBERS SUPPORTING WALL	-1 HRS.	UL X601	UL N601	
FLOOR CONSTRUCTION INCLUDING BEAM	-1 HRS.	UL D902	UL D925	
ROOF CONSTRUCTION INCLUDING BEAMS, TRUSSES AND FRAMING, ARCHES AND ROOF DECK	-1 HRS.	UL P825	UL P732	
EXTERIOR NONBEARING WALLS	-0 HRS.	UL D902	UL D925	

**GARAGE CODE ANALYSIS - BUILDING CODE**  
BOCA 1999 - CONSTRUCTION: TYPE 2B, OCCUPANCY: S-2

SECTION	SECTION DESCRIPTION	REQUIREMENT	COMMENTS
302.1, 308.3	USE GROUP	S-2 STORAGE	ADDITION TO EXISTING FACILITY
SECTION 603/TABLE 602	CONSTRUCTION CLASSIFICATION	2B	EXISTING AND NEW ADDITION
SECTION 406.1	OPEN PARKING STRUCTURES: GENERAL		OPEN PARKING STRUCTURES ARE NOT REQUIRED TO CONFORM TO SECTION 406.2 FOR PUBLIC GARAGES
TABLE 406.4	HEIGHT AND AREA LIMITATION FOR OPEN PARKING STRUCTURES	10 STORIES - 100' HT. 50,000 SQ. FT. AREA	PARKING ADDITION IS TO MATCH THE EXISTING 2B CONSTRUCTION. HEIGHTS AND AREAS MENTIONED HERE ARE SUBJECT TO POTENTIAL INCREASES PURSUANT 504.0 AND 506.0
SECTION 506.2	STREET FRONTAGE		WHERE A STRUCTURE HAS MORE THAN 25% OF THE BUILDING PERIMETER FRONTING A STREET AREA LIMITATIONS OF TABLE 506.2 SHALL BE INCREASED 25 PER CENT. AREA LIMITATIONS SHALL BE INCREASED 25 PER CENT. ACTUAL SQUARE FOOTAGE OF GARAGE AND LINK = 69,203SF
TABLE 1008.1.2	MINIMUM FLOOR AREA ALLOWANCES PER OCCUPANT	200 GROSS SQUARE FEET PER OCCUPANT	27,286 SF PER LEVEL. 27,286 DIVIDED BY 200=136.43 OR 137 PEOPLE PER FLOOR
TABLE 1010.2	MINIMUM NUMBER OF EXITS FOR OCCUPANT LOAD	2 EXITS FOR 500 OR LESS PEOPLE	137 PEOPLE PER FLOOR DIVIDED BY 2 EXITS = 68.5 OR 69 PEOPLE PER EXIT
TABLE 1009.4	EGRESS CAPACITY (OCCURS @ SUBLEVEL 2 CRESCENT ST. EXIT)		EGRESS CAPACITY SHALL NOT BE LESS THAN THE SUM OF THE TWO FLOORS
TABLE 1009.2	EGRESS WIDTH PER OCCUPANT		MIN-SHOWERED, USE GROUP S STAIRWAYS ARE ALLOWED 3" PER PERSON, DOORS 2" PER PERSON
TABLE 1010.2	NUMBER OF EXITS REQUIRED PER LEVEL		STAIR: 138 X 3" = 41.4" REQ. 45.5' PROVIDED DOOR: 138 X 2" = 27.6" REQ. 41.25' PROVIDED
TABLE 1006.5	EXIT ACCESS TRAVEL REQUIRED MAX	300' FT. (MAX) 165' FT. (LONGEST)	SEE PLANS

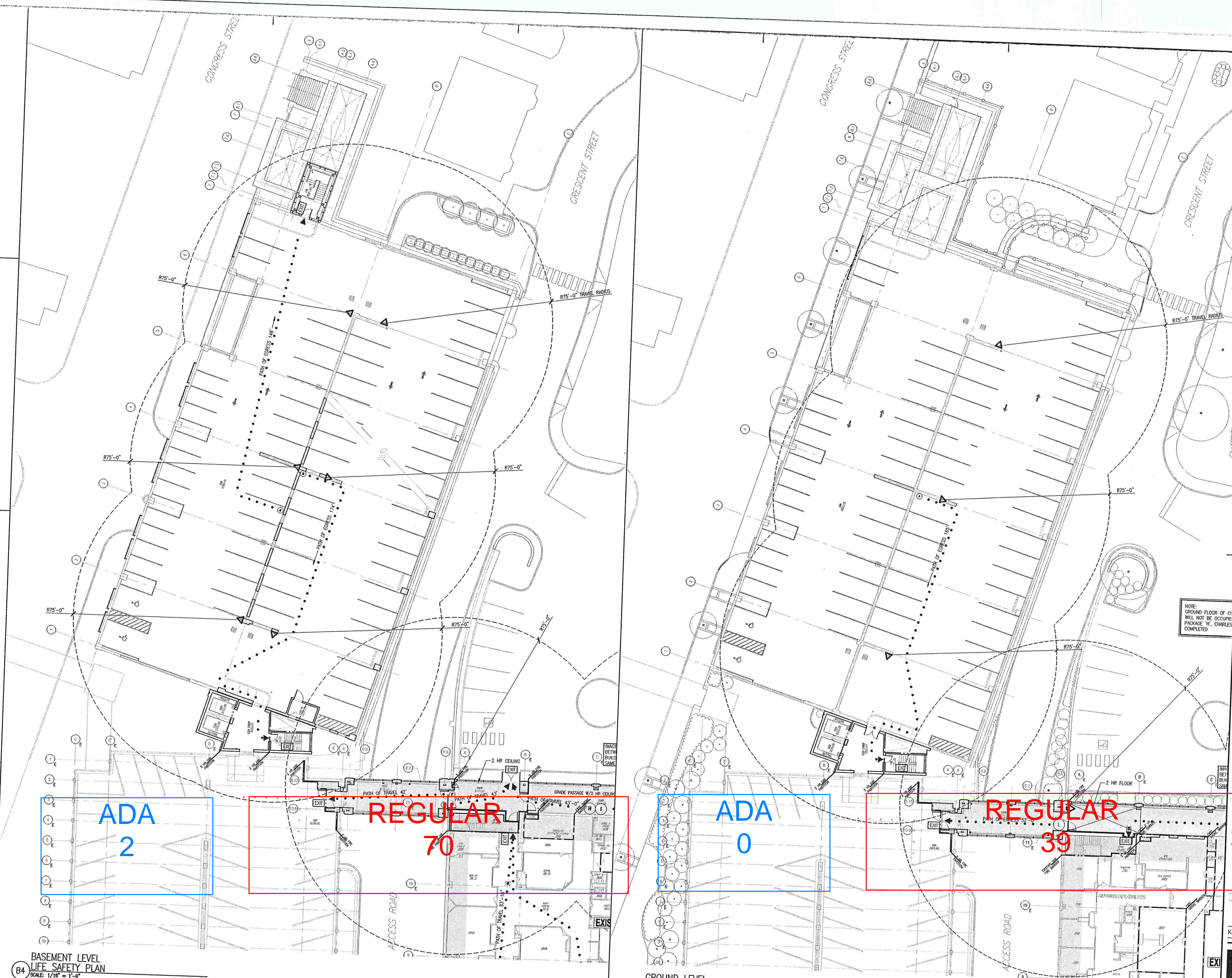
**TRO**  
ARCHITECTURE  
PLANNING  
ENGINEERING  
INTERIOR DESIGN

The Ritchie Organization  
80 Bridge Street  
Newtown, MA 02459-1194  
617-968-8400

**Maine Medical Center**  
Pkg F - Garage / Vault / Conn / Heliport  
Portland, ME  
MMC Project No. 21845

**Drawing Title**  
SUB BASEMENT LEVELS 2 & 1 GARAGE LIFE SAFETY PLANS

Scale: 1/16" = 1'-0"  
Date Issued: 09/25/04  
Sheet Number: PKG-F  
G102.1

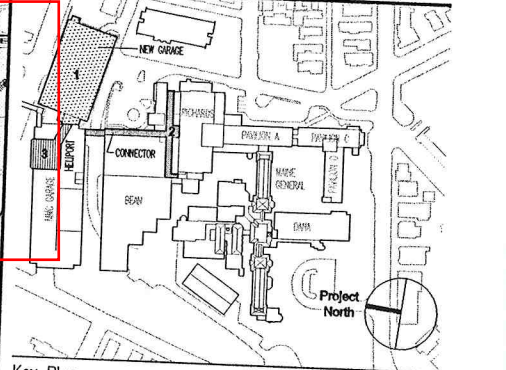


- General Notes:
- LIFE SAFETY LEGEND**
- 1. RATED PARTITIONS ARE INDICATED AS FOLLOWS:
    - 1HR FIRE RATED PARTITION
    - 2HR FIRE RATED PARTITION
    - NON-RATED SMOKE RESISTANT PARTITION
    - 1HR SMOKE BARRIER
    - 2HR RATED FIRE AND SMOKE BARRIER
  - PATH OF EXIT TRAVEL
  - EXIT INDICATES EXIT LOCATION
  - SURE (UNRATED)
  - CONNECTOR PROJECT SCOPE
  - EXISTING EGRESS STAIR
  - ◀••••• POINT OF EGRESS ACCESS
  - △ PORTABLE FIRE EXTINGUISHER
  - ⊙ EXIT SIGN
  - ⊙ HOSE STATION

NOTE: GROUND FLOOR OF GARAGE WILL NOT BE OCCUPIED UNTIL PACKAGE 'K' CHARLES COMPLETED

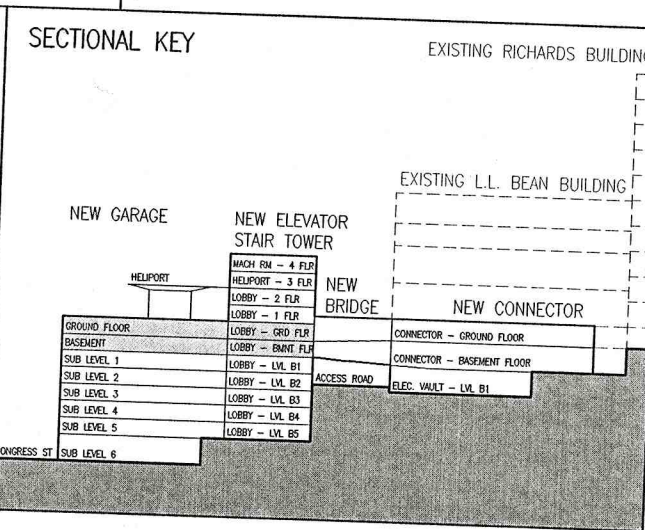
MARK	ISSUE DATE	DESCRIPTION
ADD 01	12/18/05	ADDENDUM NUMBER 01 - PACKAGE F
PERMIT	09/18/04	PERMIT SET
BID	08/26/04	BID SET

Issue Log



B4 BASEMENT LEVEL LIFE SAFETY PLAN SCALE: 1/16" = 1'-0"

D4 GROUND LEVEL LIFE SAFETY PLAN SCALE: 1/16" = 1'-0"



GARAGE CODE ANALYSIS - LIFE SAFETY			
NFPA 101 2003 - CONSTRUCTION: NA, OCCUPANCY: STORAGE			
SECTION	DESCRIPTION	REQUIREMENT	COMMENTS
6.1.13	CLASSIFICATION OF OCCUPANCY	CHAPTER 42	STORAGE
42.1.5	CLASSIFICATION OF HAZARD CONTENTS	COMPLY WITH SECTION 6.2	ORDINARY HAZARD
42.1.6	MINIMUM CONSTRUCTION REQUIREMENTS	NONE	
42.1.7	OCCUPANT LOAD	THE OCCUPANT LOAD SHALL BE DETERMINED ON THE BASIS OF THE MAXIMUM PROBABLE POPULATION OF THE SPACE	REFER TO THE BUILDING CODE OCCUPANCY SECTION
42.2	MEANS OF EGRESS REQUIREMENTS	DOOR OPENINGS IN MEANS OF EGRESS SHALL NOT BE LESS THAN 32 CLEAR WIDTH	

TRAVEL DISTANCES			
TRAVEL	ALLOWED	PROVIDED	COMMENTS
A TO EXIT	300'	BOCA 400'	REFER TO NFPA 101; 42.2.6 EXIT TRAVEL FROM ANY POINT TO EXIT
B TO EXIT	300'	BOCA 400'	REFER TO NFPA 101; 42.2.6 EXIT TRAVEL FROM ANY POINT TO EXIT
REMOVEDNESS	> 3' MAX. DMC	REFER TO CHART 1006.5	BOCA 1006.4.1 REMOVEDNESS; EXITS OR EXIT ACCESS DOORS

GARAGE FIRE RATINGS - LIFE SAFETY			
NFPA 101 2003 - ORDINARY HAZARD STORAGE*			
ITEM DESCRIPTION	FIRE RATING	COMMENTS	
EXTERIOR BEARING WALLS	1-HRS.		
INTERIOR BEARING WALLS	1-HRS.		
COLUMNS	1-HRS.		
BEAMS, GIRDERS, TRUSSES, AND ARCHES	1-HRS.		
FLOOR CONSTRUCTION	1-HRS.		
ROOF CONSTRUCTION	1-HRS.		
EXTERIOR NONBEARING WALLS	0-HRS.		

\* INFORMATION TAKEN FROM 1999 NFPA 220 TABLE 3-1 TYPE II(11) CONSTRUCTION

GARAGE FIRE RATINGS - BUILDING CODE			
BOCA 1999 - TABLE 602 & 705.2 CONSTRUCTION TYPE 2B			
ITEM DESCRIPTION	FIRE RATING	ISOLATEK U.L. DESIGN NO.	W.R. GRACE U.L. DESIGN NO.
EXTERIOR WALLS (FIRE SEPARATION 0'-0")	2-HRS.	U905	U 905
EXTERIOR WALLS (FIRE SEPARATION GREATER THAN 0')	1-HRS.	FW-D-0038	FW-D-1049
EXTERIOR WALLS (FIRE SEPARATION GREATER THAN 10')	1-HRS.	U905	U 905
FIRE ENCLOSURE OF EXITS	2-HRS.	U411	U411
SHAFTS	2-HRS.	U415/U423	U415/U423
OTHER NONBEARING PARTITIONS	0-HRS.	N/A	N/A
INTERIOR COLUMNS AND FRAMING	1-HRS.	UL X815	UL X615
STRUCTURAL MEMBERS SUPPORTING WALL	1-HRS.	UL N829	UL X772
FLOOR CONSTRUCTION INCLUDING BEAM	1-HRS.	UL N601	UL N601
ROOF CONSTRUCTION	1-HRS.	UL X829	UL X772
ROOF CONSTRUCTION INCLUDING BEAMS, TRUSSES AND FRAMING, ARCHES AND ROOF DECK	1-HRS.	UL D902	UL D925
15' OR LESS IN HEIGHT TO LOWEST MEMBER	1-HRS.	UL P825	UL P732
GREATER THAN 15' TO LOWEST MEMBER	0-HRS.	UL D902	UL D925

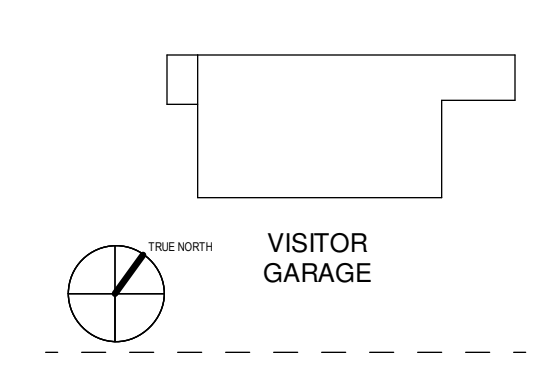
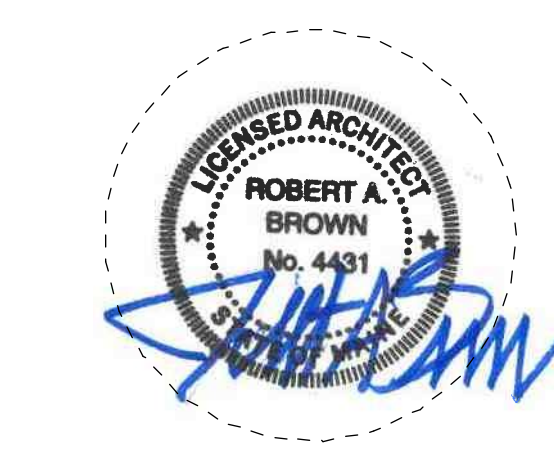
GARAGE CODE ANALYSIS - BUILDING CODE			
BOCA 1999 - CONSTRUCTION: TYPE 2B, OCCUPANCY: S-2			
SECTION	SECTION DESCRIPTION	REQUIREMENT	COMMENTS
302.1.308.3	USE GROUP	S-2 STORAGE	ADDITION TO EXISTING PARKING FACILITY
SECTION 602/TABLE 602	CONSTRUCTION CLASSIFICATION	2B	EXISTING AND NEW ADDITION
SECTION 406.1	OPEN PARKING STRUCTURES, GENERAL	10 STORES - 100' HT. 50,000 SQ. FT. AREA	OPEN PARKING STRUCTURES ARE NOT REQUIRED TO CONFORM TO SECTION 406.1 FOR PUBLIC GARAGES. HERE ARE SUBJECT TO POTENTIAL INCREASES PURSUANT 504.0 AND 505.0.
SECTION 406.4	HEIGHT AND AREA LIMITATION FOR OPEN PARKING STRUCTURES	10 STORES - 100' HT. 50,000 SQ. FT. AREA	PARKING ADDITION IS TO MATCH THE EXISTING 2B CONSTRUCTION. HEIGHTS AND AREAS MENTIONED PURSUANT 504.0 AND 505.0.
SECTION 506.2	STREET FRONTAGE INCREASE	WHERE A STRUCTURE HAS MORE THAN 25% OF THE BUILDING PERIMETER FRONTING A STREET AREA LIMITATIONS OF TABLE 503 SHALL BE INCREASED 2% PER EVERY 1% OF SUCH EXCESS FRONTAGE.	EXISTING GARAGE PERIMETER EQUALS 1,579 LF. CRESCENT ST + CONGRESS STREET PERIMETER OF ADDITION = 800/1579 = 50.8% - 25% PER 506.2 = 28.8% 28.8% x 2% = 57.6% 57.6% x 20,000 = 1,152 SQ. FT. PERMISSIBLE INCREASE OF 1,152 SQ. FT. ALLOWABLE SQUARE FOOTAGE. ACTUAL SQUARE FOOTAGE OF GARAGE AND LINK = 69,200 SQ. FT.
TABLE 1006.1.2	MAXIMUM FLOOR AREA ALLOWANCES PER OCCUPANT	200 GROSS SQUARE FEET PER OCCUPANT	27,286 SF PER LEVEL 27,286 DIVDED BY 200=136.43 OR 137 PEOPLE PER FLOOR
TABLE 1010.2	MINIMUM NUMBER OF EXITS FOR OCCUPANT LOAD	2 EXITS FOR 500 OR LESS PEOPLE	137 PEOPLE PER FLOOR DIVIDED BY 2 EXITS = 68.5 OR 69 PEOPLE PER EXIT
TABLE 1009.4	EGRESS CAPACITY (OCCURS @ SUBLEVEL 2 CRESCENT ST. EXIT)	EGRESS CAPACITY SHALL NOT BE LESS THAN THE SUM OF THE TWO	69 PEOPLE PER EXIT, PER LEVEL, X2 = 138 PEOPLE
TABLE 1009.2	EGRESS WIDTH PER OCCUPANT	UN-SPRINKLED, USE GROUP S STARWAYS ARE ALLOWED, 3" PER PERSON, DOORS 2" PER PERSON	STAR: 138 X 3" = 414" REQ. 45.5" PROVIDED DOOR: 138 X 2" = 276" REQ. 41.25" PROVIDED
TABLE 1010.2	NUMBER OF EXITS REQUIRED PER LEVEL	REQUIRED: 2	
TABLE 1006.5	EGRESS ACCESS TRAVEL REQUIRED MAX PROXIMITY MAX	300' FT. (MAX) 185' FT. (LOWEST)	SEE PLANS

**TRO**  
ARCHITECTURE  
PLANNING  
ENGINEERING  
INTERIOR DESIGN  
The Ritchie Organization  
80 Bridge Street  
Newton, MA 02459-1154  
617-959-0400

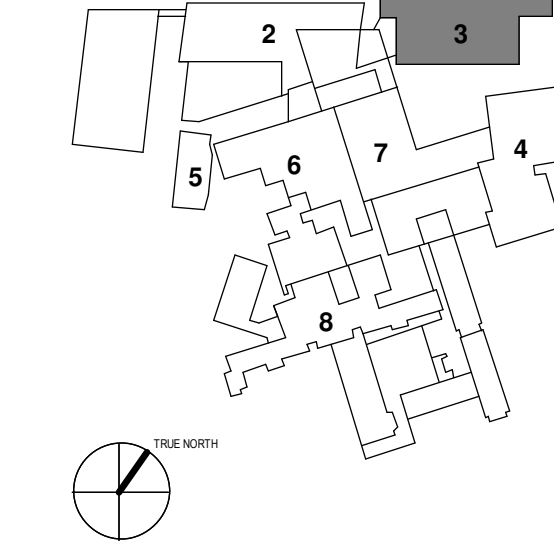
**Maine Medical Center**  
Pkg F - Garage / Vault / Conn / Heliport  
Portland, ME  
MMC Project No. 21845

Drawing Title  
**BASEMENT & GROUND LEVEL GARAGE LIFE SAFETY PLANS**

Commission No. 4676 Date Issued 08/26/04  
Scale 1/16" = 1'-0" Sheet Number PKG-F  
Drawn By JN/MB  
Approved By BS  
Revision 46760103-1.dwg  
Date 08/26/04  
**G103.1**



- 1 - NOT USED
- 2 - CONGRESS STREET
- 3 - VISITOR GARAGE
- 4 - EAST TOWER
- 5 - CENTRAL UTILITY PLANT
- 6 - ISAN BUILDING
- 7 - RICHARDS BUILDING
- 8 - MAINE GENERAL BUILDING



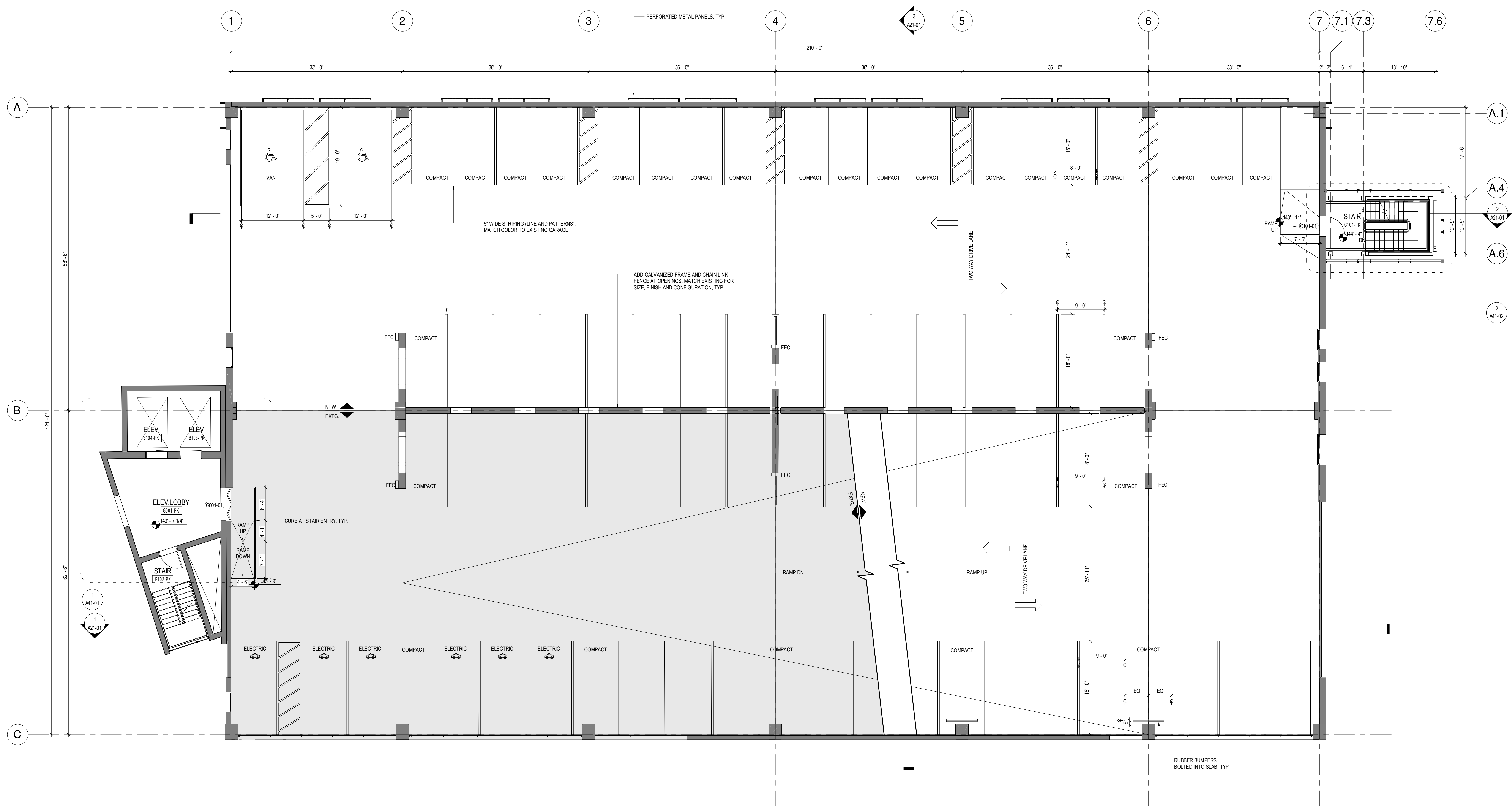
NO	ISSUE	DATE
PERMIT SET		03.29.18
PERMIT SET		03.09.18
2 - ADDENDUM #2		01.09.18
1 - ADDENDUM #1		12.05.17
NO	ISSUE	DATE

Job Number 152182.000  
 Drawn TEAM  
 Checked DS/RIS  
 Approved JK

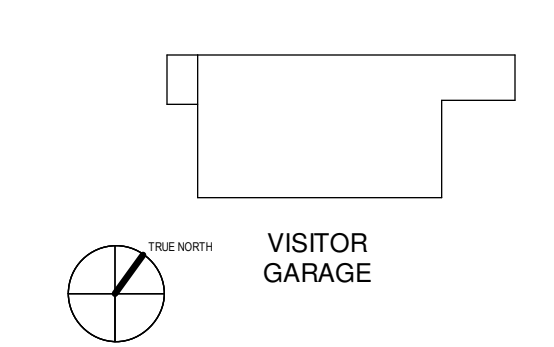
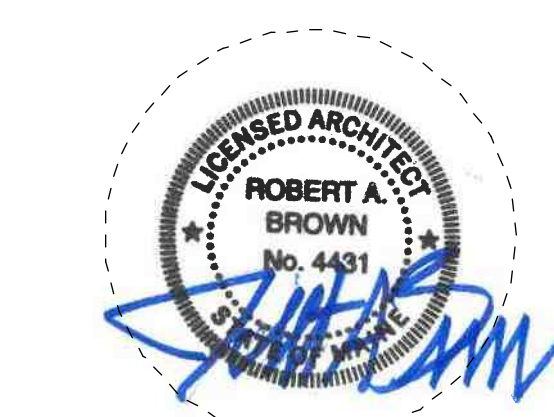
ADA  
 2

REGULAR  
 35

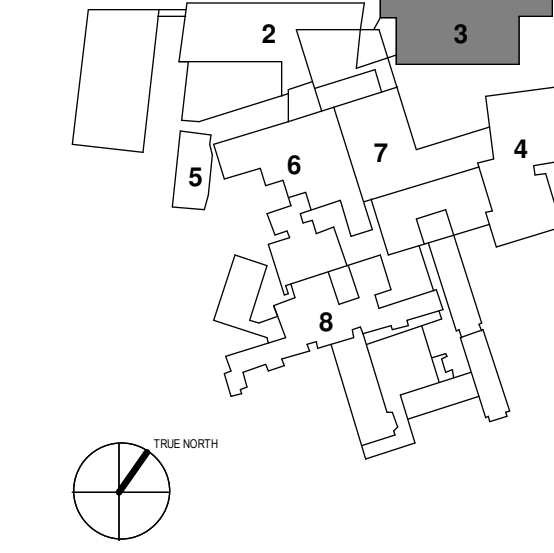
VAN  
 1



**1 GARAGE GROUND FLOOR LEVEL (EXISTING & NEW)**  
 1/8" = 1'-0"



- 1 - NOT USED
- 2 - CONGRESS STREET
- 3 - VISITOR GARAGE
- 4 - EAST TOWER
- 5 - CENTRAL UTILITY PLANT
- 6 - ISAN BUILDING
- 7 - RICHARDS BUILDING
- 8 - MAINE GENERAL BUILDING



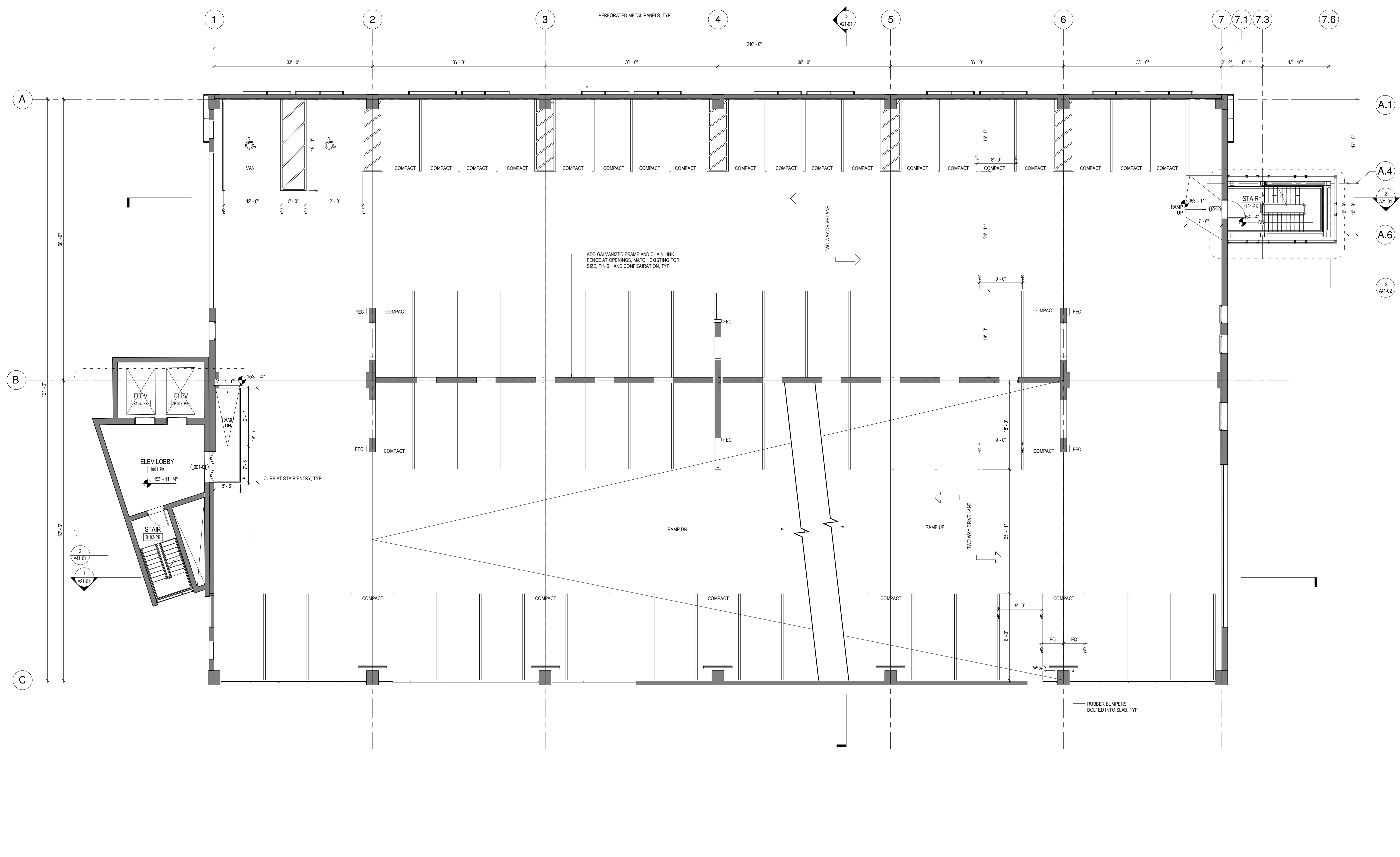
NO	ISSUE	DATE
PERMIT SET		03.29.16
PERMIT SET		03.09.16
2 - ADDENDUM #2		01.09.16
1 - ADDENDUM #1		12.05.17
NO	ISSUE	DATE

Job Number 152182.000  
Drawn TEAM  
Checked DS/RIS  
Approved JK

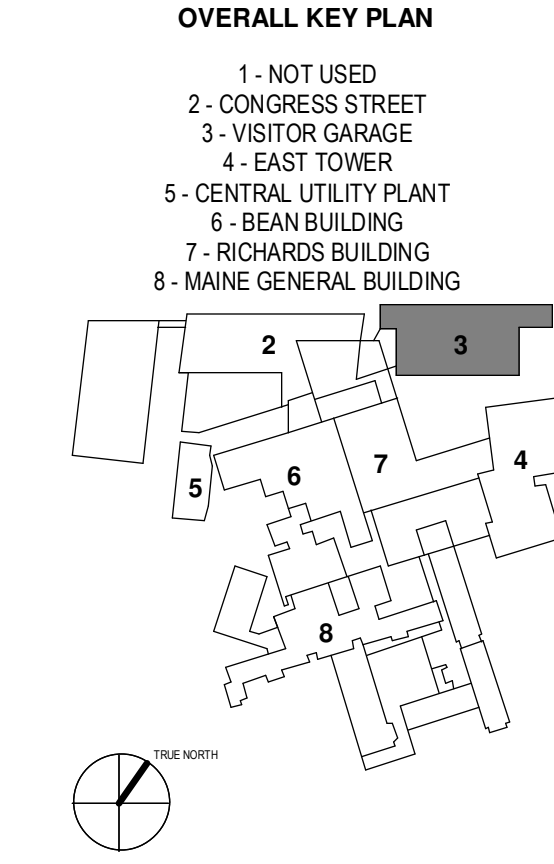
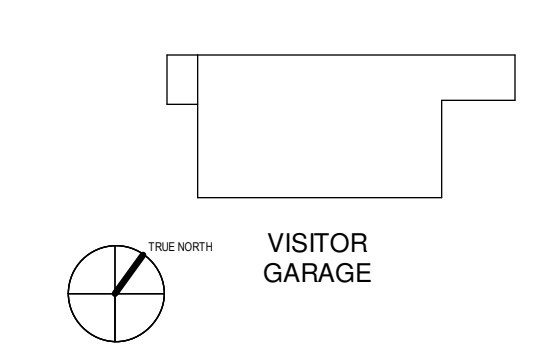
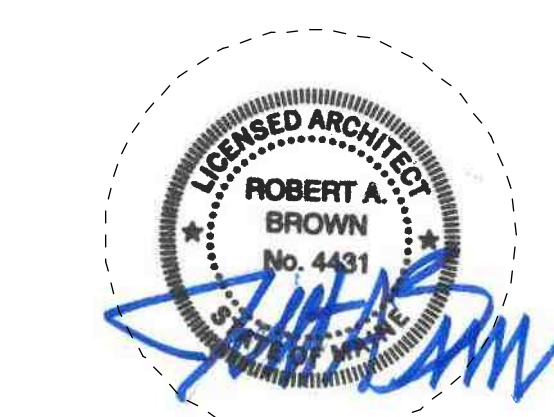
ADA  
2

REGULAR  
74

VAN  
1



**1 FLOOR PLAN - LEVEL 1 (NEW)**  
1/8" = 1'-0"

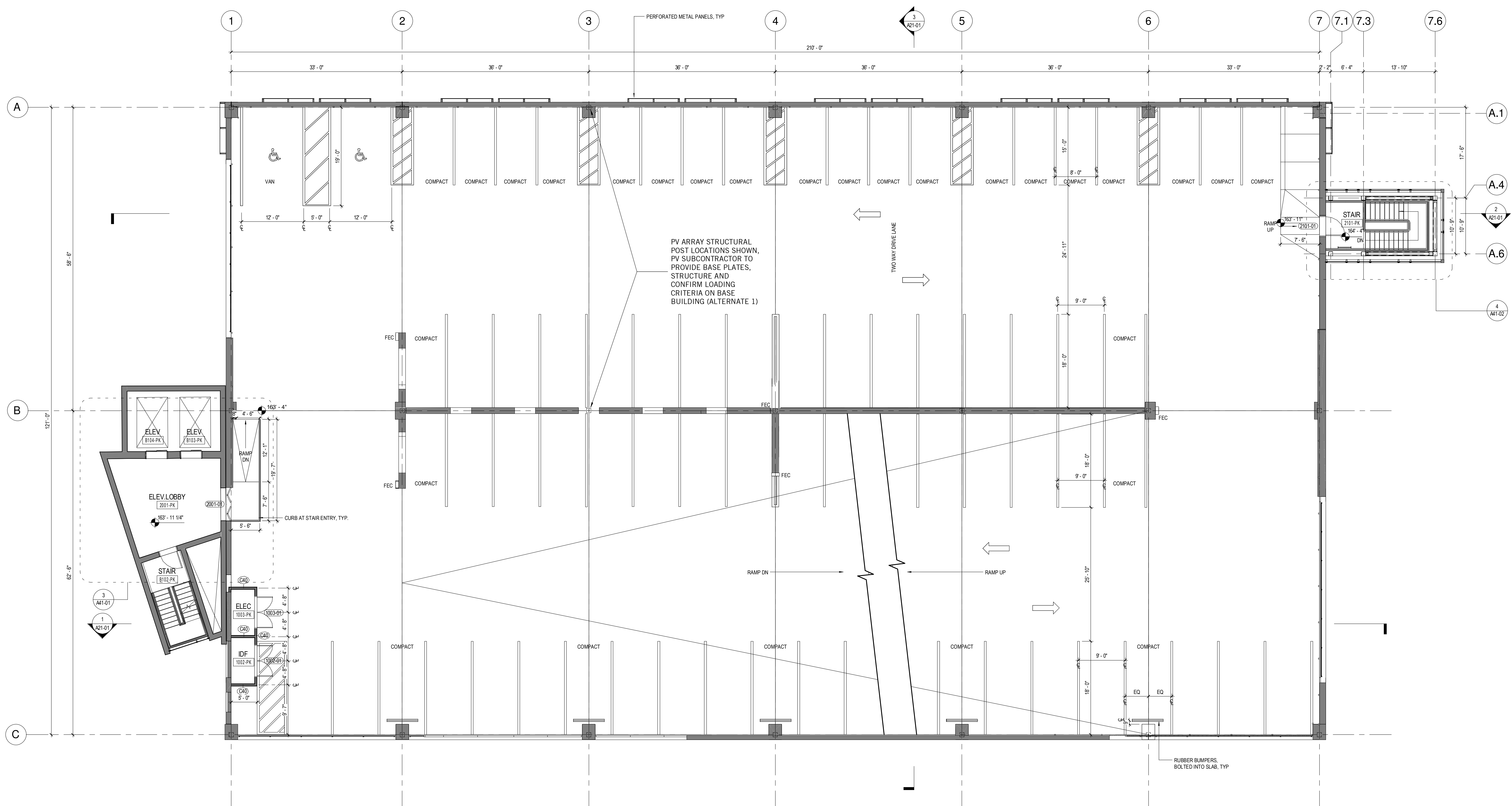


PERMIT SET	03.29.16
PERMIT SET #1	03.09.16
2 ADDENDUM #2	01.09.16
1 ADDENDUM #1	12.05.17
NO.	DATE
ISSUE	DATE
Job Number	152182.000
Drawn	TEAM
Checked	DS/RS
Approved	JK

ADA  
2

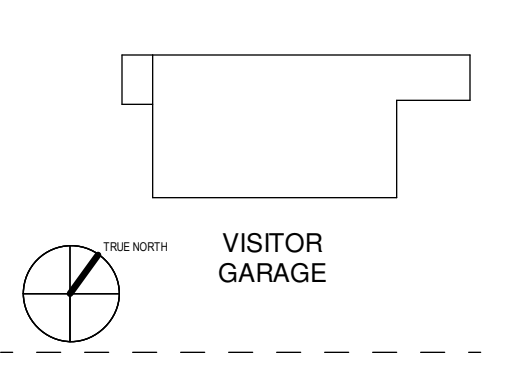
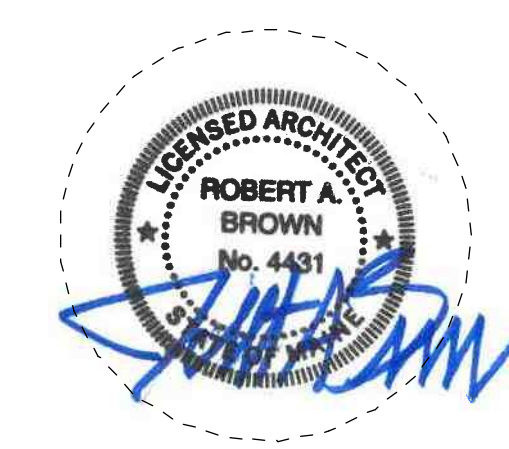
REGULAR  
73

VAN  
1

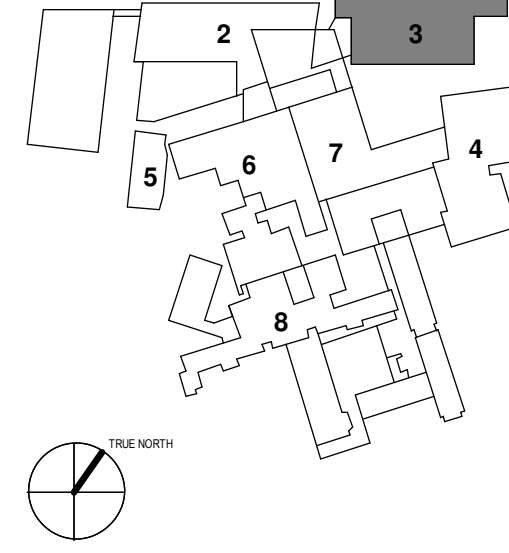


**1 FLOOR PLAN - LEVEL 2 (NEW)**  
1/8" = 1'-0"





- 1 - NOT USED
- 2 - CONGRESS STREET
- 3 - VISITOR GARAGE
- 4 - EAST TOWER
- 5 - CENTRAL UTILITY PLANT
- 6 - ISAN BUILDING
- 7 - RICHARDS BUILDING
- 8 - MAINE GENERAL BUILDING

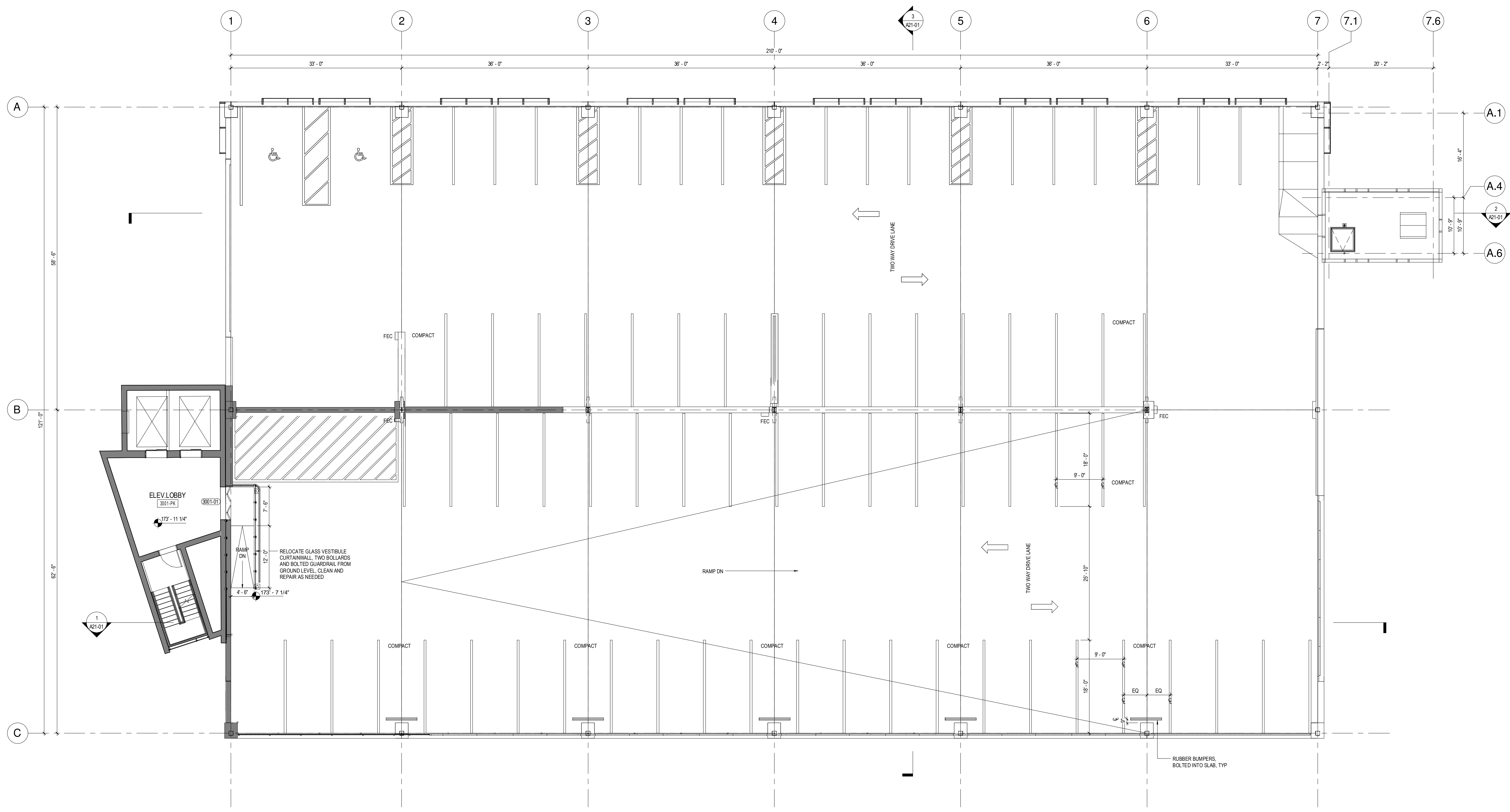


PERMIT SET	03.29.18	
PERMIT SET #1	03.09.18	
2 - ADDENDUM #2	01.09.18	
1 - ADDENDUM #1	12.05.17	
NO.	ISSUE	DATE

Job Number 152182.000  
Drawn TEAM  
Checked DS/RIS  
Approved JK

ADA  
0

REGULAR  
39



**1 FLOOR PLAN - LEVEL 3 (NEW)**  
1/8" = 1'-0"