



Maine Medical Center

To: Jean Fraser, City of Portland Planning Division  
From: Maine Medical Center, Planning Department  
Date: June 2019  
Re: Bicycle Parking at Maine Medical Center (Bramhall Campus), *Supporting Documentation*

Supporting Information

At the request of the City, the photos and diagrams below provide visual aids and additional context for the six (6) proposed bike parking locations at the Bramhall Campus. Please see the Bike Parking Memo (MMC\_Bike Parking Memo\_2019.05.01\_FINAL) for more information.



Figure 1: Map of Planned Bike Parking

Location	Planned Investment (# of Spaces)	Distance to Hospital Entrance	Details
1. East Tower/ Main Entrance	24	45 feet	Saris Stadium Racks. Replace two existing "schoolyard" racks.
2. Dana Center	8	40 feet	Saris Stadium Racks. Replace one existing "schoolyard" rack.
3. South Entrance	16	75 feet	Saris Stadium Racks. Replace two existing "wave" racks.
4. Emergency Department	8	10 feet	Replace one existing "schoolyard" rack.
5. Patient/Visitor Garage	90	75 feet	Vertical space saver racks. <i>See additional detail below.</i>
6. St. John Street Garage	30	N/A (off-site)	Saris Stadium Racks. 14 spaces under canopy; 16 in garage. Accessible via transit and MMC shuttle.
<b>Total</b>	<b>176</b>		<b>Exceeds the # required by City by 12 spaces</b>

Table 1: Planned Bike Parking by Location and # of Spaces

**1. East Tower/Main Entrance**



*East Tower/Main Entrance Bike Parking. Location is covered and under video surveillance. Staff entrance (top of the photo) is easily accessible. Main entrance to the hospital is conveniently located in the opposite direction (45-feet away).*



## 2. Dana Center



*Dana Center Bike Parking. Location is covered. The stairs and entrance (top of the photo) are easily accessible. There is a separate entrance for Radiation Therapy (right).*

## 3. South Entrance



*South Entrance Bike Parking. Note: close proximity to the South Entrance to the hospital (top of the photo). The Main Entrance is located in the opposite direction (95-feet away).*

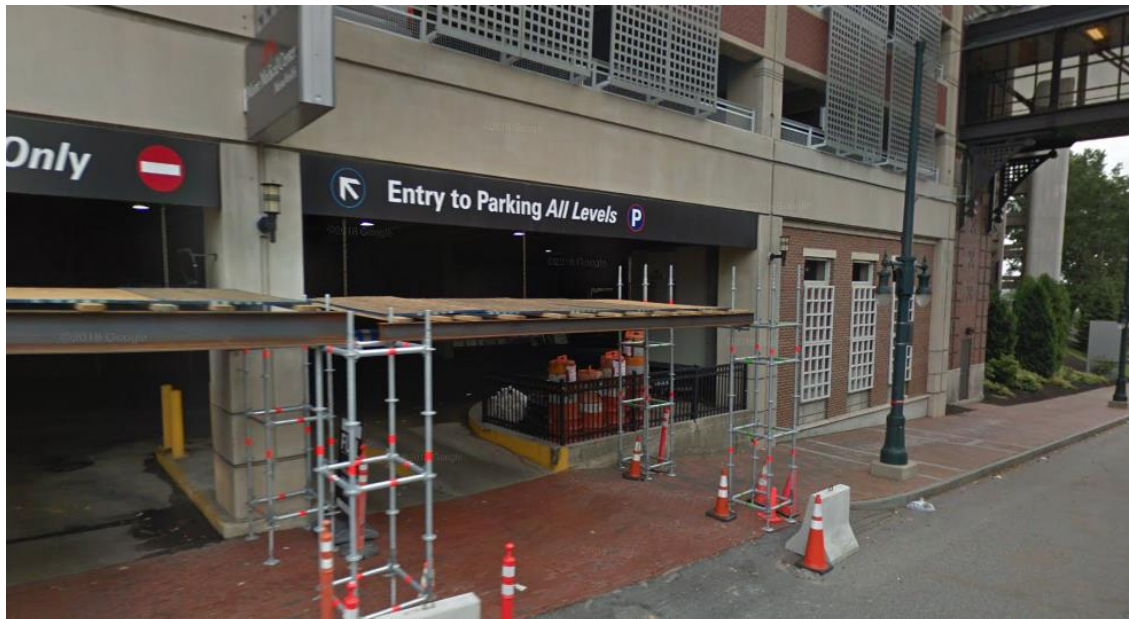


#### 4. Emergency Department

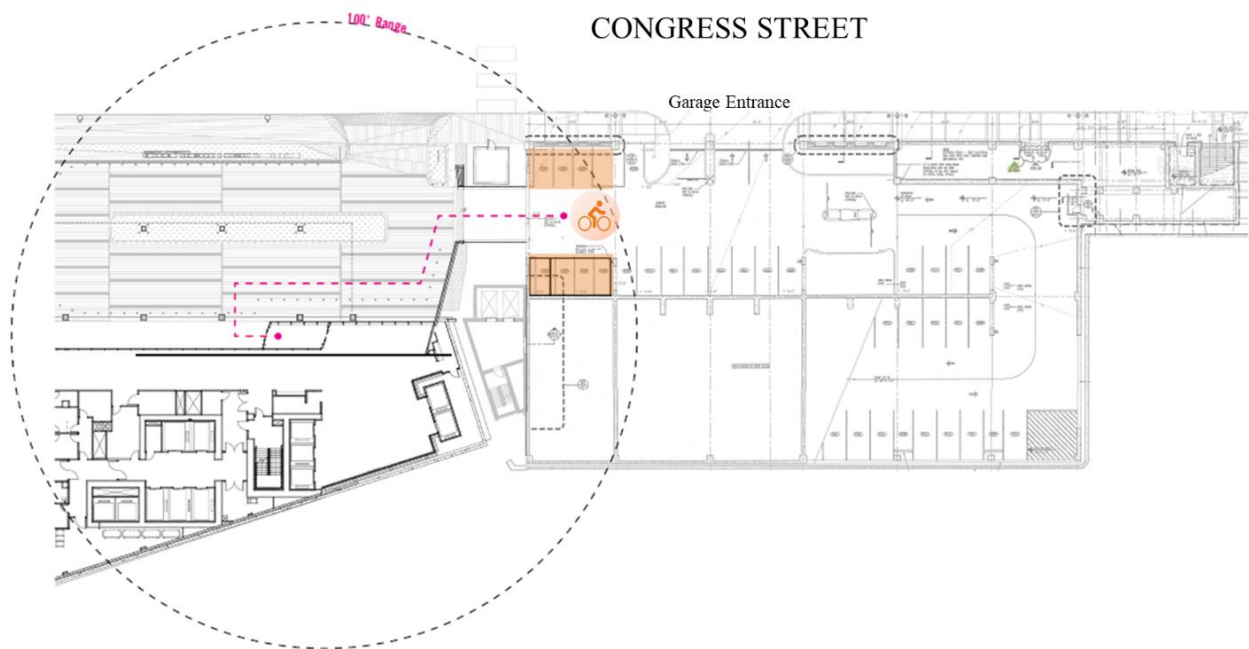


*Emergency Department Bike Parking. Conveniently located at the entrance to the ED (photo)*

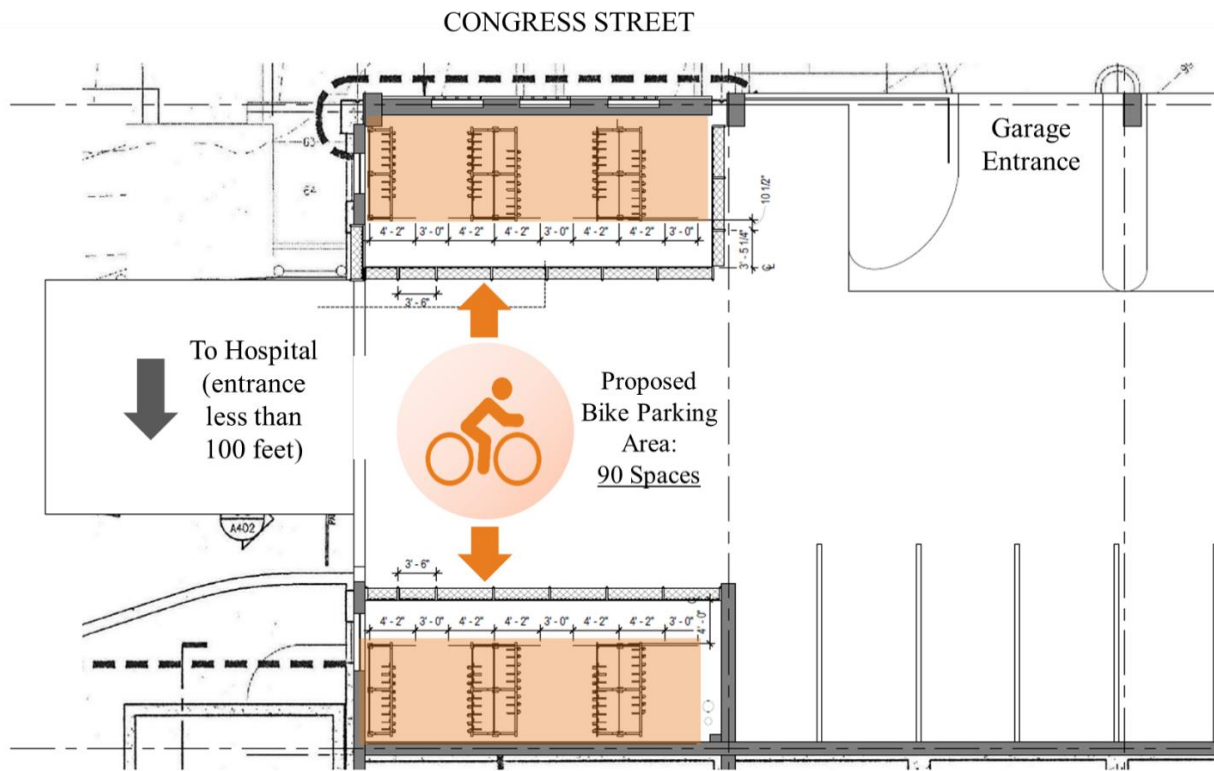
#### 5. Patient/Visitor Garage



*Proposed Patient and Visitor Garage Bike Parking (1 of 3). View from Congress Street. Dedicated, covered bike parking area located through the entrance, to the right. See diagrams below for additional detail.*



*Proposed Patient and Visitor Garage Bike Parking (2 of 3). Floor Plan (Overview). See diagram below for detailed view.*



*Proposed Patient and Visitor Garage Bike Parking (3 of 3). Floor Plan (Detailed).*

**6. St. John Street Garage – optimal locations to be determined.**