

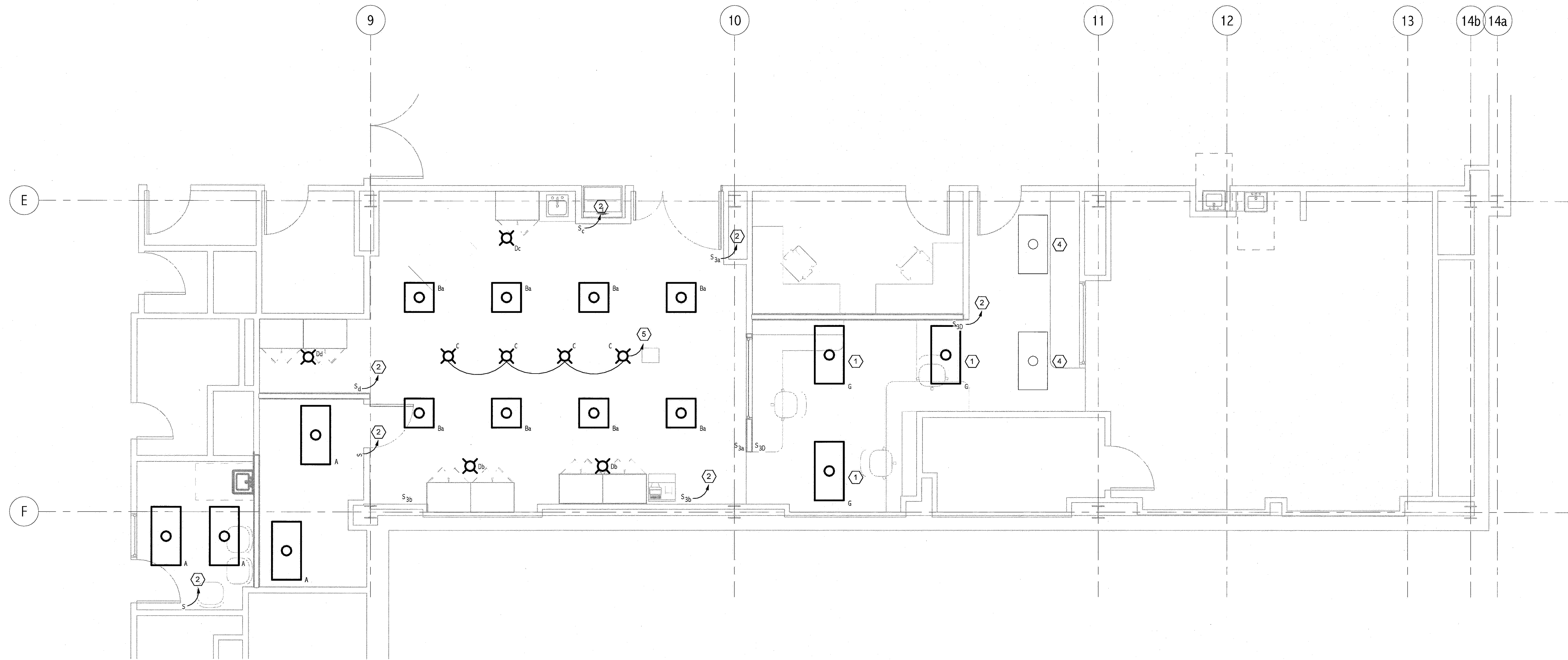
**NOTE:**

1. SEE SHEET E-001 FOR LEGEND AND GENERAL NOTES.

**KEYED NOTES:**

- ① CONNECT TO EXISTING LIGHTING CIRCUIT.
- ② TO EXISTING LOCAL NORMAL POWER LIGHTING CIRCUIT. (LP82-3)
- ③ TO EXISTING LOCAL "CRITICAL" POWER LIGHTING CIRCUIT. (LCAR2-1 OR LCAR2A-1)
- ④ EXISTING FIXTURE.
- ⑤ TO "ROOM LIGHT CONTROL PANEL". SEE SHEET NO EP-101.

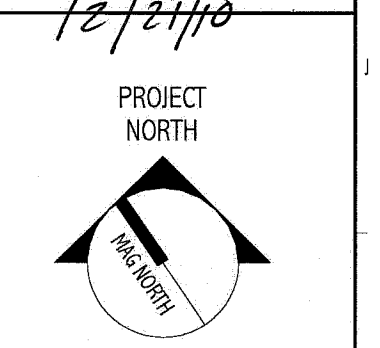
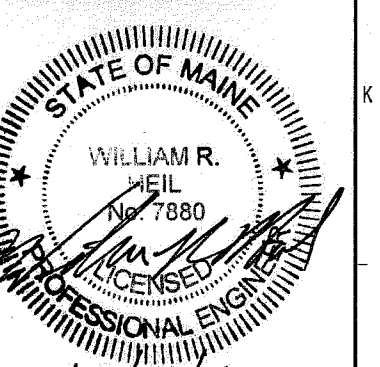
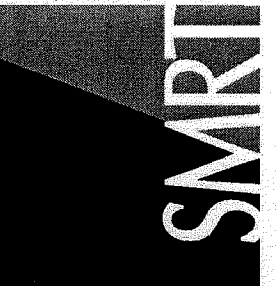
LIGHT FIXTURE SCHEDULE					
TYPE	DESCRIPTION	MFR.	LAMPS	MOUNTING	NOTES
A	2x4 ZERO PLENUM TROFFER WITH FLUSH CURVED BAFFLE 277V	COLUMBIA ZPT SERIES	2-54W TSHD 3500K	CEILING RECESSED	UNIVERSAL VOLTAGE BALLAST
B	2x2 ZERO PLENUM TROFFER WITH FLUSH CURVED BAFFLE 277V	COLUMBIA ZPT SERIES	2-24W TSHD 3500K	CEILING RECESSED	UNIVERSAL VOLTAGE BALLAST
C	8" VERTICAL INCANDESCENT DOWNLIGHT WITH TEMPERED GLASS LENS 120V	PRESCOLITE INC300 SERIES	150W A23	CEILING RECESSED	
D	6" HORIZONTAL, CLEAR LENS, WALL WASH, & VIRTUAL BAFFLE 277V	PRESCOLITE CF066 SERIES	1-26W T8 QUAD TUBE	CEILING RECESSED	WALL WASH WITH CLEAR LENS
E	2'x1' SPECIFICATION GRADE STATIC TROFFER WITH A12 ACRYLIC LENS 277V	COLUMBIA 4PS SERIES	3-32W T8 3500K	CEILING RECESSED	PROVIDE WITH DIMMING BALLAST
F	28" LED UNDERCABINET TASK LIGHTING WITH ACRYLIC TEXTURED LENS	ALICO LINCX SERIES LINC100-128	9-1W LED 3400K	SURFACE UNDERCABINET	
G	2'x4 ZERO PLENUM TROFFER WITH FLUSH CURVED BAFFLE 277V	COLUMBIA ZPT SERIES	2-54W TSHD 3500K	CEILING RECESSED	PROVIDE WITH DIMMING BALLAST



① CATH LAB#1 LIGHTING PLAN  
1/4" = 1'-0"

144 Elm Street, P.O. Box 618  
Portland, Maine 04104  
Tel: (207) 772-3846  
Fax: (207) 772-1070  
www.lumetric.com

ARCHITECTURE  
ENGINEERING  
PLANNING  
INTERIOR DESIGN  
COMMISSIONING



MAINE MEDICAL CENTER  
CATH LAB #1  
PORTLAND, ME

ISSUED FOR CONSTRUCTION  
12-21-10

CURRENT ISSUE STATUS:  
DATE: 12-21-10

REV	DESCRIPTION	DATE
0	ISSUED FOR CONSTRUCTION	12-21-10

GRAPHIC SCALE:  
0" 1"

SCALE: As indicated

PROJECT MANAGER: KD  
DRAWN BY: CDS  
DATE OF RECORD: WRL  
PROJECT NO: 10113-00  
DATE: 12-21-10

SHEET TITLE:  
CATH LAB#1  
LIGHTING PLAN

SHEET No.  
EL 101