

NOTE:

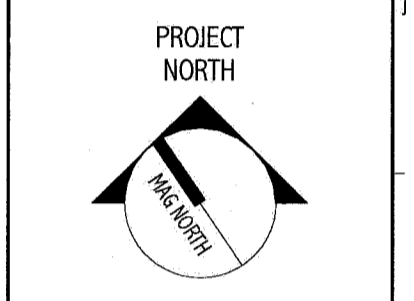
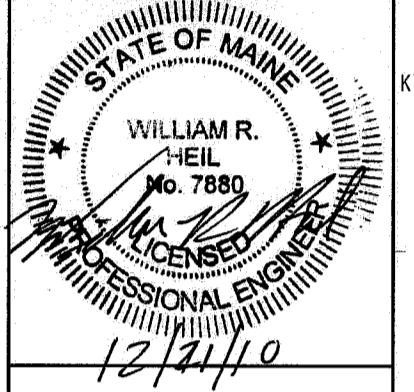
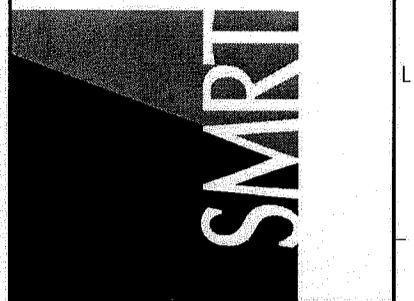
- 1. SEE SHEET E-001 FOR LEGEND AND GENERAL NOTES.

KEYED NOTES:

- 1 EXISTING LIGHT FIXTURE TO BE REMOVED.
- 2 EXISTING SWITCHES TO BE REMOVED. BACK BOX AND CONDUIT TO REMAIN FOR FUTURE USE.
- 3 REMOVE EXISTING SWITCH.
- 4 EXISTING SMOKE DETECTOR TO BE REMOVED AND SAVED FOR USE IN NEW WORK.
- 5 EXISTING RECEPTACLE TO BE REMOVED.
- 6 EXISTING RECEPTACLE REMAINS.
- 7 EXISTING TEL/DATA TO BE REMOVED.
- 8 EXISTING TEL/DATA OUTLET REMAINS.
- 9 EXISTING "CODE BLUE" BUTTON REMAINS.
- 10 EXISTING "E-STOP" BUTTON(S) TO BE REMOVED AND SAVED FOR USE UNDER NEW WORK.
- 11 NURSE CALL LIGHT TO BE REMAIN.
- 12 REMOVE 2 EXISTING 150 AMP CIRCUIT BREAKERS. REMOVE LOAD SIDE CONDUITS AND CONDUCTORS. REMOVE ONE LINE SIDE CONDUIT AND CONDUCTORS BACK TO PANEL "XDP-B". SECOND LINE SIDE FEEDER REMAINS.
- 13 REMOVE EXISTING CEILING UTILITY COLUMN AND ASSOCIATED RECEPTABLES.
- 14 REMOVE EXISTING ELECTRICAL DUCT FROM PERIMETER OF ROOM.
- 15 REMOVE EXISTING NURSE CALL BUTTON AND SAVED FOR USE UNDER NEW WORK.
- 16 EXISTING FIRE ALARM DEVICE REMAINS.
- 17 EXISTING FIXTURE AND ASSOCIATED SWITCHING REMAINS.
- 18 EXISTING WIRELESS HUB TO BE REMOVED AND SAVED FOR USE IN NEW WORK.
- 19 REMOVE EXISTING DEVICES (RECEPTABLES AND TEL/DATA JACK) AND SAVED FOR REINSTALLATION UNDER NEW WORK.

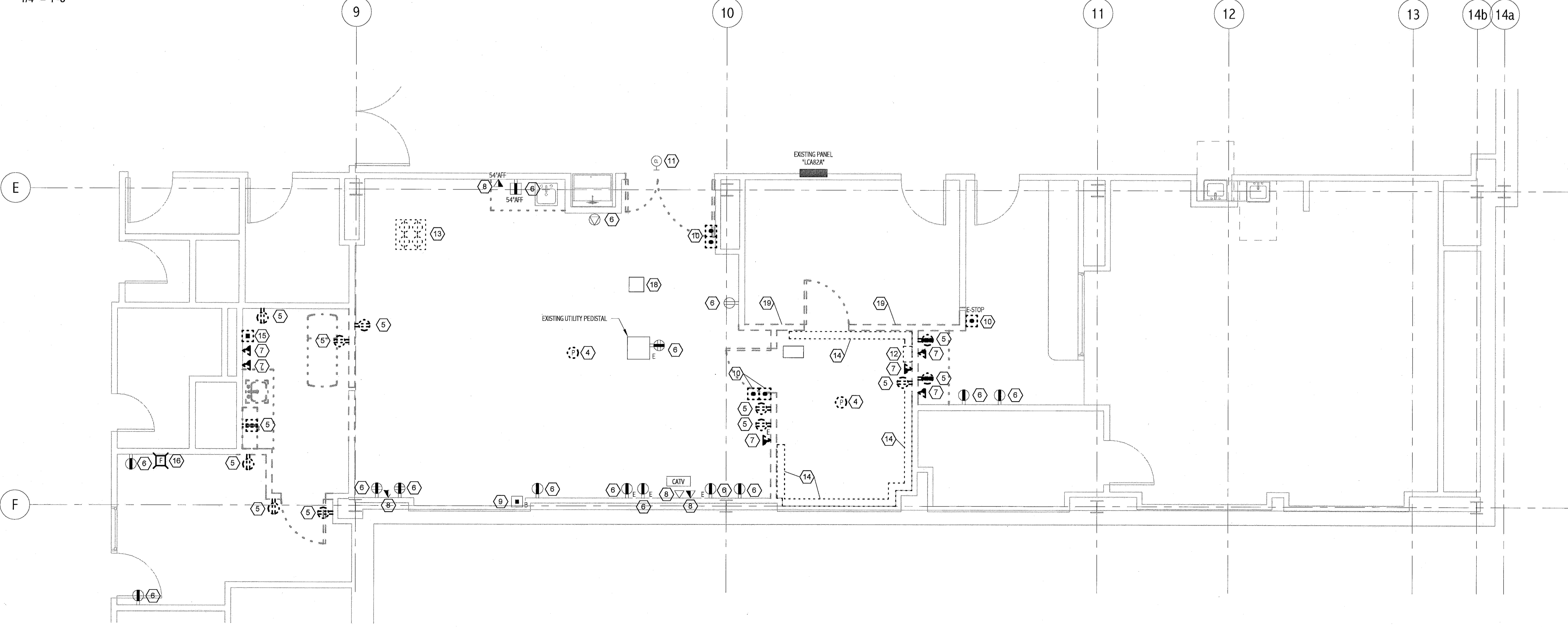
144 Fore Street, Box 678
 Portland, Maine 04104
 Tel: (207) 772-3846
 Fax: (207) 772-1070
 www.smartinc.com

ARCHITECTURE
 ENGINEERING
 PLANNING
 INTERIOR DESIGN
 COMMISSIONING



CATH LAB#1 LIGHTING DEMOLITION PLAN
 1/4" = 1'-0"

9 10 11 12 13 14b 14a



CATH LAB#1 POWER AND SYSTEMS DEMOLITION PLAN
 1/4" = 1'-0"

MAINE MEDICAL CENTER
 CATH LAB #1
 PORTLAND, ME

ISSUED FOR CONSTRUCTION
 12-21-10

CURRENT ISSUE STATUS:

NO.	DATE	DESCRIPTION	BY	CHKD.

GRAPHIC SCALE:
 1" = 1'-0"

SCALE: 1/4" = 1'-0"

PROJECT MANAGER: KD
 JC/DRAWN BY: CDS
 ARE OF RECORD: WRS
 PROJECT NO: 10113-00
 DATE: 12-21-10
 SHEET TITLE:
CATH LAB#1 DEMOLITION PLANS

SHEET No. ED 101