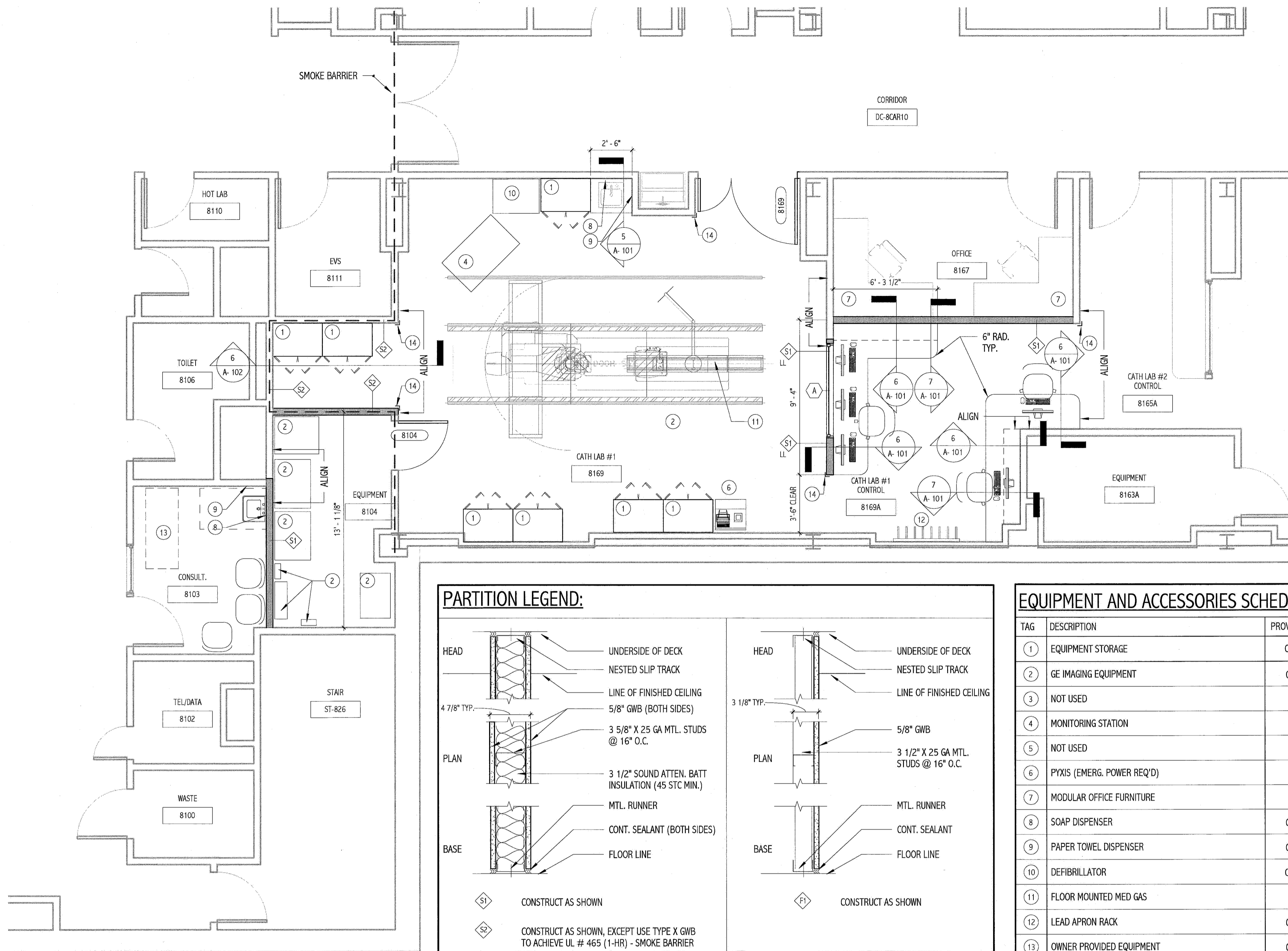


1 DEMO PLAN  
1/8" = 1'-0"

**DEMOLITION PLAN KEY NOTES:**

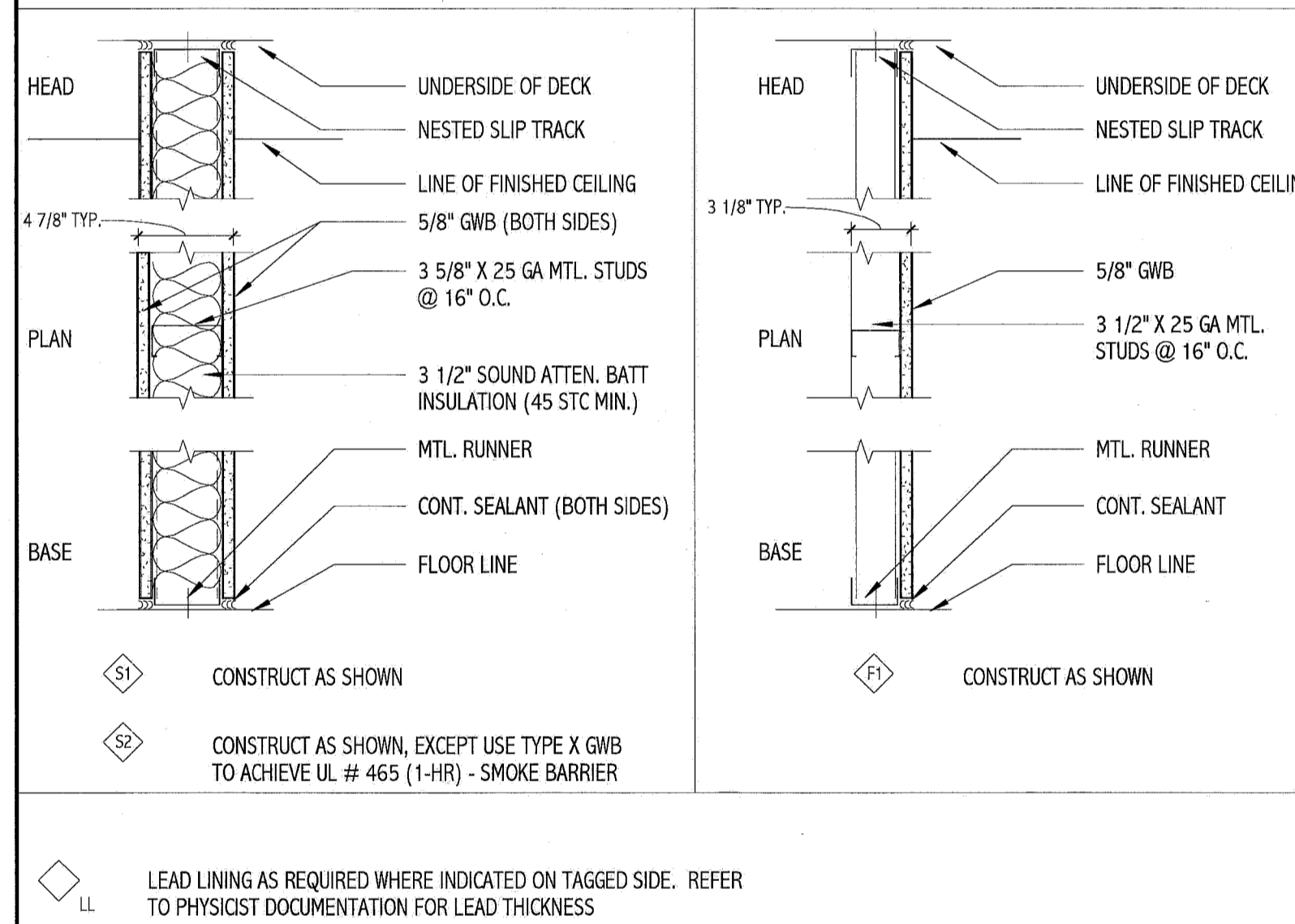
- 1 REMOVE DOOR, FRAME AND HARDWARE.
- 1A REMOVE DOOR, FRAME TO REMAIN.
- 2 REMOVE WALL OR PORTION OF WALL INDICATED BY DASHED LINE. PRIOR TO REMOVAL, IDENTIFY IF WALL IS LOAD BEARING. IF FOUND TO BE A BEARING WALL NOTIFY ARCHITECT IMMEDIATELY.
- 3 REMOVE FINISH FLOOR MATERIAL (IF ANY) AND BASE. PREPARE SURFACE FOR NEW FINISHES AS REQUIRED BY SCHEDULE AND SPECIFICATIONS.
- 4 REMOVE CEILING SYSTEM COMPLETE. I.E. FRAMING MEMBERS, TRACKS, WIRES, LIGHTING, CEILING, CEILING GRID ETC. COORDINATE EXTENTS WITH SCOPE OF NEW WORK. REFER TO NEW WORK FOR SOFFITS TO REMAIN.
- 5 REMOVE EXISTING SHELVING SYSTEM AND PREPARE FOR NEW LOCATION. SEE NEW WORK PLAN FOR NEW LOCATION.
- 6 REMOVE EXISTING CASEWORK. SALVAGE MATERIALS FOR RE-USE WHEN POSSIBLE. COORDINATE WITH NEW WORK.
- 7 REMOVE EXISTING MODULAR OFFICE FURNITURE AND ACCESSORIES.
- 8 REMOVE PLUMBING FIXTURE.
- 8A REMOVE PLUMBING FIXTURE AND PREPARE FOR NEW LOCATION. SEE MECH. DEMO DRAWING
- 9 REMOVE PEG BOARD AND ACCESSORIES.

NOTE: SALVAGE CASEWORK COMPONENTS & HARDWARE WHERE POSSIBLE.



2 FLOOR PLAN  
1/4" = 1'-0"

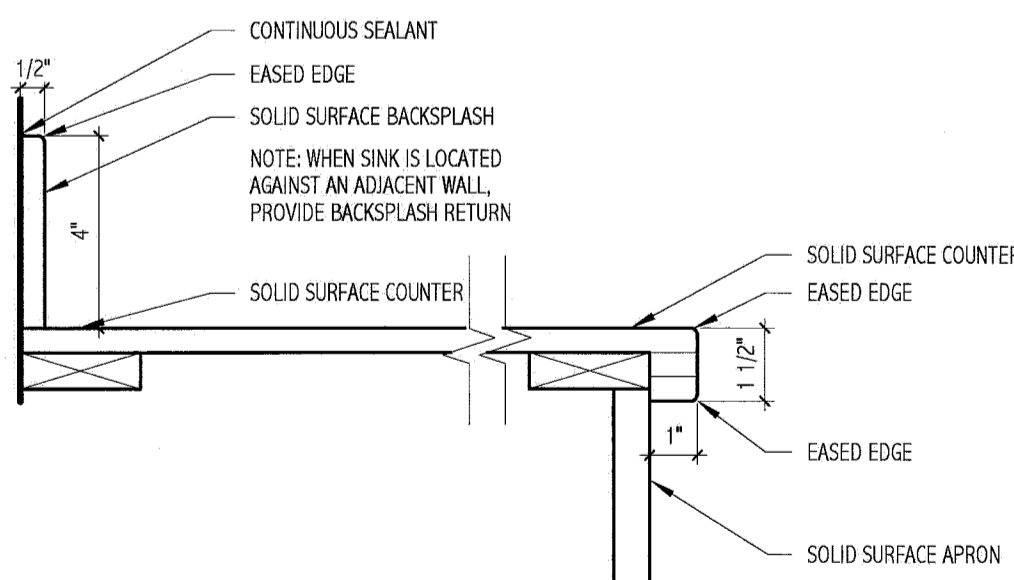
**PARTITION LEGEND:**



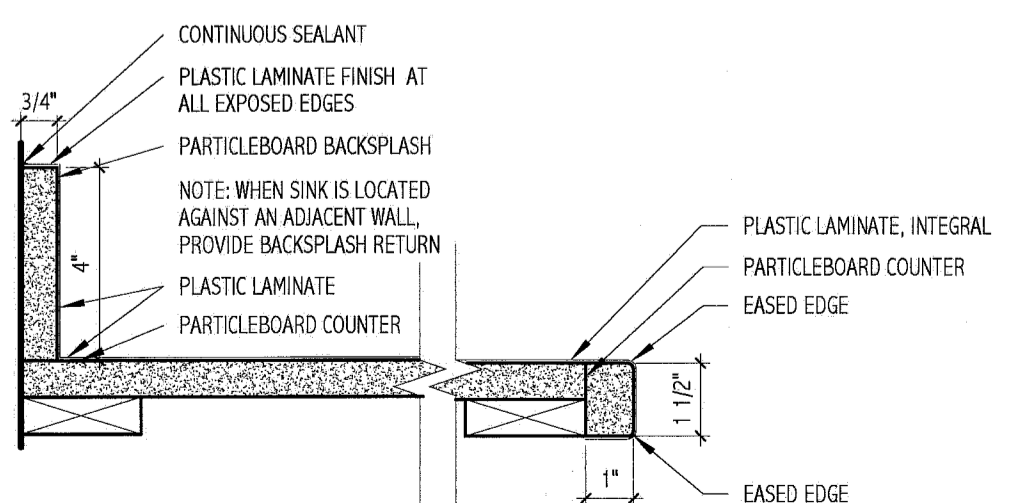
**EQUIPMENT AND ACCESSORIES SCHEDULE**

TAG	DESCRIPTION	PROVIDE
1	EQUIPMENT STORAGE	O/O
2	GE IMAGING EQUIPMENT	O/C
3	NOT USED	
4	MONITORING STATION	E
5	NOT USED	
6	PYXIS (EMERG. POWER REQ'D)	E
7	MODULAR OFFICE FURNITURE	E
8	SOAP DISPENSER	O/C
9	PAPER TOWEL DISPENSER	O/C
10	DEFIBRILLATOR	O/O
11	FLOOR MOUNTED MED GAS	E
12	LEAD APRON RACK	O/C
13	OWNER PROVIDED EQUIPMENT	O/C
14	2" x 2" S.S. CORNER GUARD (UP TO 5'-0" AFF)	C/C

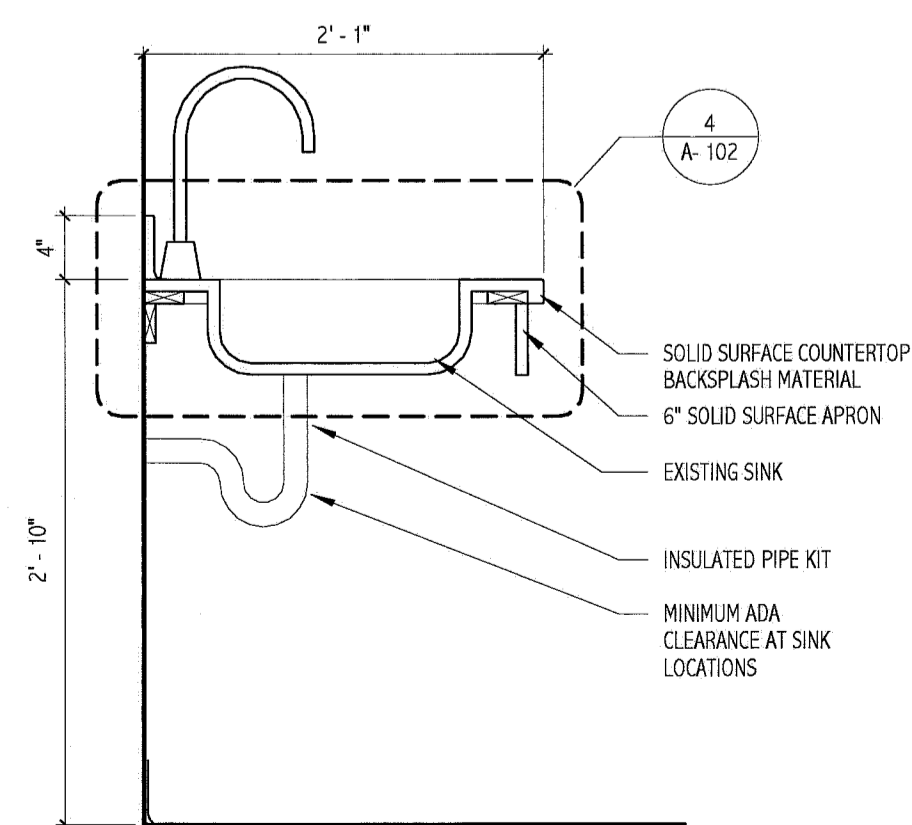
C/C: CONTRACTOR FURNISHED/CONTRACTOR INSTALLED  
O/C: OWNER FURNISHED/CONTRACTOR INSTALLED  
O/O: OWNER FURNISHED/OWNER INSTALLED  
E: EXISTING



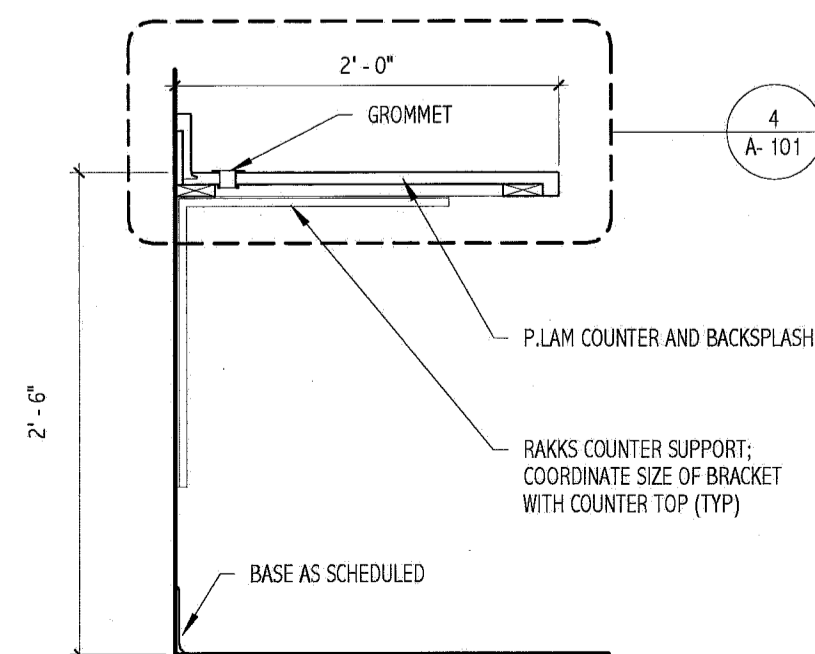
3 SOLID SURFACE DETAIL (CATH LAB 1)  
3" = 1'-0"



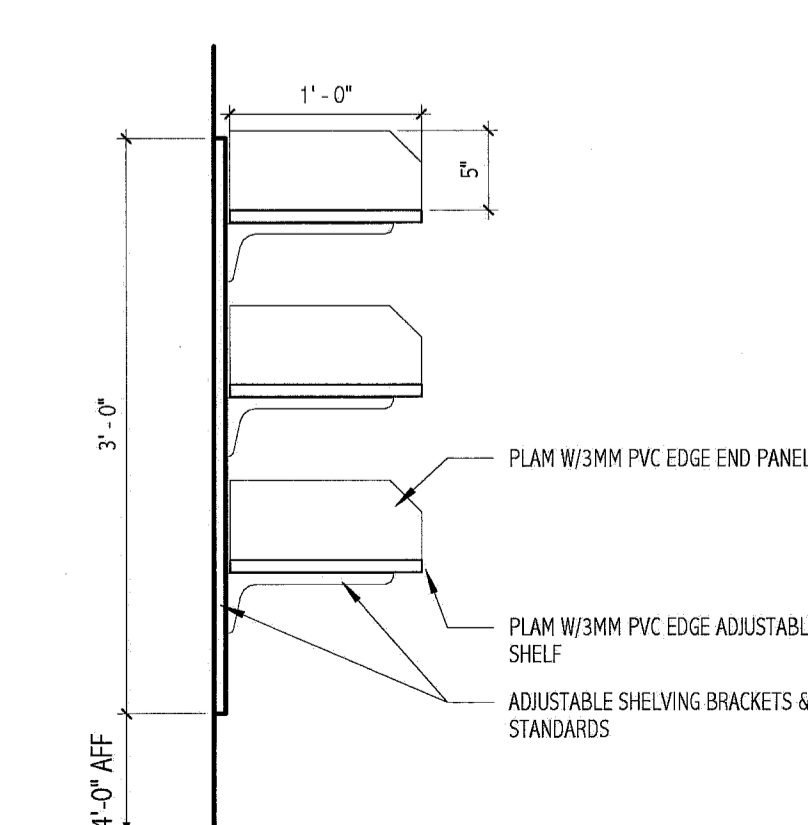
4 PLAM DETAIL (CATH LAB 1)  
3" = 1'-0"



5 CASEWORK @ SINK  
1" = 1'-0"



6 CASEWORK @ COUNTER P.LAM  
1" = 1'-0"

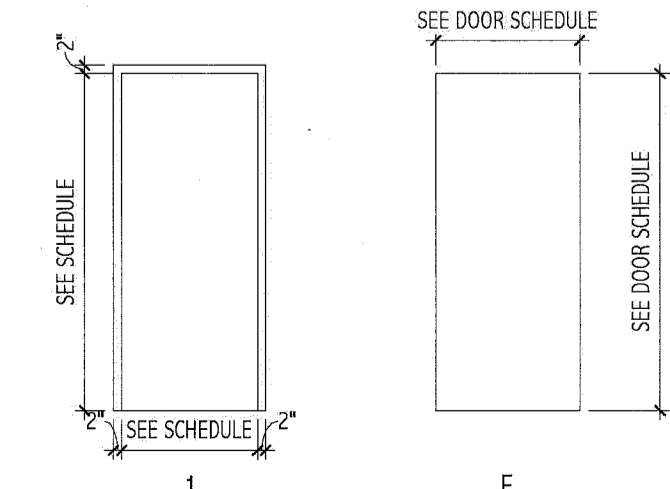


7 CASEWORK @ ADJ. SHELVING  
1" = 1'-0"

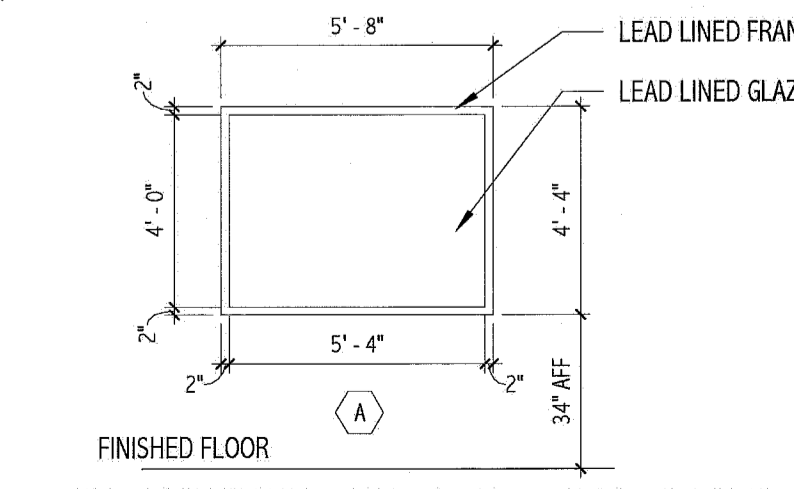
DOOR #	WIDTH	HEIGHT	THICK	MAT'L	ELEV	GLAZ	MAT'L	ELEV	HARDWARE SET	FIRE RATING	DOOR #	REMARKS
8104	3'-0"	7'-0"	0'-1.3/4"	WD	F	-	HM	1	1	20	8104	OWNER TO PROVIDE LEAD LINING REQUIREMENTS
8169	6'-0"	7'-0"	0'-1.3/4"	WD	F	-	EXISTING	1	2	-	8169	4'-0" X 7'-0", 2'-0" X 7'-0" NEW DOORS TO BE INSTALLED ON EXISTING FRAME. DOOR FRAME TO BE FIB-3. REQUIRED LEAD SHIELDING INFORMATION TO BE PROVIDED BY OWNER.

**DOOR HARDWARE:**

- 1: HINGES, LEVER LOCKSET (PASSAGE FUNCTION), WALL STOP, SILENCERS, GASKETS, AUTO DOOR BOTTOM
- 2: PIVOT HINGES, ASTRAGAL, RE-USE WALL MAGS, NEW MAG PLATES, U-SHAPE S.S. PROTECTION PLATES ON LATCH & HINGE EDGES FOR BOTH LEAVES, S.S. PROTECTION PLATE @ 48" AFF CORRIDOR SIDE OF BOTH LEAVES, CLOSER & LEVER LOCKSET (PASSAGE) ON ACTIVE LEAF, FLUSH BOLTS ON INACTIVE LEAF.



DOOR & FRAME TYPES  
1/4" = 1'-0"



WINDOW ELEVATIONS  
1/4" = 1'-0"

144 Free Street, P.O. Box 618  
Portland, Maine 04104  
Tel: (207) 772-2866  
Fax: (207) 772-1070  
www.smpinc.com

ARCHITECTURE  
ENGINEERING  
PLANNING  
INTERIOR DESIGN  
COMMISSIONING

**SMART**

REGISTERED ARCHITECT  
KRISTEN L. DAMLUTH  
No. 2756  
STATE OF MAINE

PROJECT NORTH

MAINE MEDICAL CENTER  
CATH. LAB # 1  
PORTLAND, ME

ISSUED FOR CONSTRUCTION  
12.21.10

REV	DESCRIPTION	DATE
0	ISSUED FOR CONSTRUCTION	12.21.10

GRAPHIC SCALE: 1" = 1'-0"

SCALE: As Indicated

PROJECT MANAGER: KD  
DRAWN BY: ART  
A/E OF RECORD: KD  
PROJECT NO: 10113-00  
DATE: 12.21.10

SHEET TITLE: DEMO & FLOOR PLAN

SHEET No. A-101