

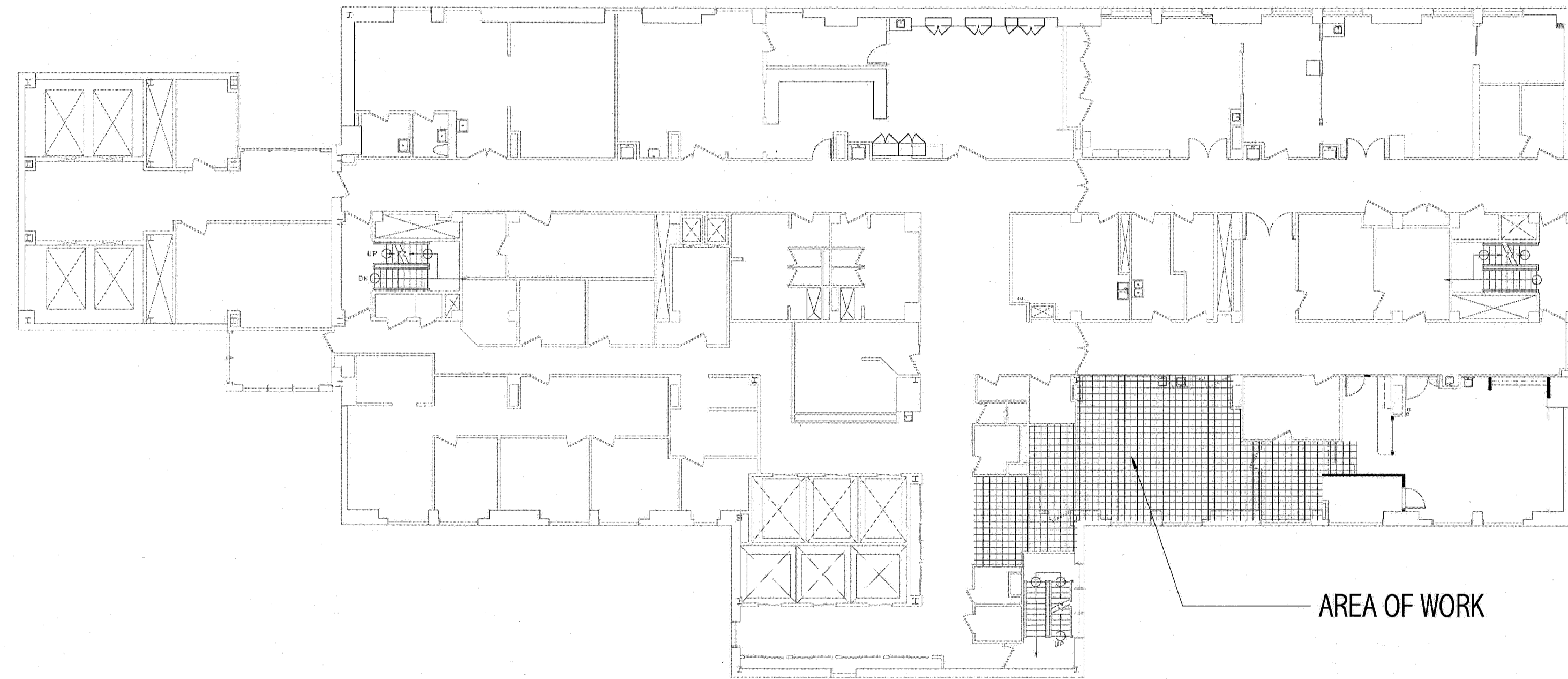
MAINE MEDICAL CENTER

RICHARDS WING: PORTLAND, MAINE

CATH. LAB 1 RENOVATIONS

ISSUED FOR CONSTRUCTION

12.21.10



AREA OF WORK

RICHARDS WING - 8TH FLOOR

GENERAL NOTES:

- FIELD VERIFY ALL DIMENSIONS AND LAYOUT PRIOR TO PROCEEDING WITH WORK. NOTIFY ARCHITECT IN WRITING OF ANY DISCREPANCIES OR INCONSISTENCIES. FAILURE TO REPORT ANY DISCREPANCIES WITHIN THESE CONSTRUCTION DOCUMENTS TO THE ARCHITECT WILL NOT BE GROUNDS FOR ADDITIONAL COST OR CHANGE ORDERS.
- THE CONTRACTOR SHALL BE RESPONSIBLE FOR PROVIDING ALL MATERIALS (UNLESS NOTED OTHERWISE), AND WORKMANSHIP IN ACCORDANCE WITH FEDERAL, STATE, CITY, AND LOCAL BUILDING CODES AND THEIR REQUIREMENTS.
- CONTRACTOR TO CONFIRM EXISTING WALL RATINGS.
- THE CONTRACTOR AND ALL TRADES SHALL NOTE REQUIREMENTS OF "GENERAL NOTES" ON ALL SHEETS.
- EACH TRADE TO PROVIDE SMOKE OR FIRE SEALANT AT PENETRATIONS AS REQUIRED FOR WALL TYPE. ALL SEALANT, FIRE STOPPING, AND SMOKE STOPPING ASSEMBLIES SHALL BE U.L. RATED.
- DIMENSIONS ARE FACE OF CONCRETE, FACE OF MASONRY, FACE OF EXISTING PARTITION AND CENTERLINE OF STUD PARTITIONS, UNLESS INDICATED OTHERWISE.
- REFER TO ALL CONSTRUCTION DOCUMENTS FOR REQUIREMENTS WHICH MAY AFFECT THE WORK IN ANOTHER DISCIPLINE AND COORDINATE WORK.
- REFER TO DETAILS FOR ADDITIONAL DIMENSIONAL INFORMATION.
- DOOR JAMBS SHALL BE LOCATED 6" FROM CORNER IN STUD PARTITIONS AND 8" FROM CORNER IN MASONRY PARTITIONS UNLESS INDICATED OTHERWISE.
- PROVIDE BLOCKING IN WALLS AS NECESSARY WHERE CASEWORK, SHELVES, HANDRAILS, AND MISC. EQUIPMENT ARE LOCATED.
- PATCH ALL HOLES, WALLS AND CRACKS IN ROOMS TO RECEIVE NEW PAINT.
- ANY EXISTING WALLS THAT ARE FOUND TO BE UNBRACED OR DO NOT EXTEND TO BOTTOM OF DECK/SLAB SHOULD BE BRACED BACK TO STRUCTURE. WHEN PRIVACY IS AN ISSUE EXTEND WALL TO BOTTOM OF DECK/SLAB.
- DO NOT SCALE DRAWINGS.
- "PROVIDE" MEANS "FURNISH AND INSTALL."

ABBREVIATIONS:

AB	ANCHOR BOLT	LF	ANGLE / LENGTH
A/C	AIR CONDITIONING	LF	LEFT
ACCU	AIR CONDITIONING CONDENSER UNIT	LINO	LINED
ACPLAS	ACOUSTICAL PLASTER	LL	LIVE LOAD
ACT	ACOUSTIC CEILING TILE	LLH	LONG LEG HORIZONTAL
AF	ABOVE FINISH FLOOR	LLV	LONG LEG VERTICAL
AGG	AGGREGATE	LP	LIGHTING PANEL / LIQUIFIED PROPANE
ALT	ALTERNATE		
AP	ACCESS PANEL	MAX	MAXIMUM
APROX	APPROXIMATE	MB	MARKER BOARD
ARCH	ARCHITECTURAL	MOD	MEDIUM DENSITY OVERLAY
		MECH	MECHANICAL
BCX	BOTTOM CORD EXTENSION BOARD	MFR	MANUFACTURER
BD	BOARD	MIN	MINIMUM
BIT	BITUMINOUS	MISC	MISCELLANEOUS
BLDG	BUILDING	MOP	MASONRY OPENING
BLP	BORROWED LIGHT PANEL	MR	MOISTURE-RESISTANT
BO	BOTTOM OF	MUA	MAKE-UP AIR
BOF	BOTTOM OF FOOTING		
BOS	BOTTOM OF STEEL	N	NOSING
BOT	BOTTOM	NCB	NEW CATCH BASIN
BRDG	BRIDGING	NDMH	NEW DRAIN MANHOLE
BRG	BEARING	NEM	NEW FORCE MAIN
BS	BOTH SIDES	NIC	NOT IN CONTRACT
BSE	BRICK SHELF ELEVATION	NS	NEAR SIDE
		NSD	NEW STORM DRAIN LINE
C	CHANNEL	NSS	NEW SANITARY SEWER LINE
CB	CATCH BASIN / CHALKBOARD	NIS	NOT TO SCALE
CEM BD	CEMENTITIOUS BACKER BOARD	NW	NEW WATER LINE
CFM	CUBIC FEET PER MINUTE	OC	ON CENTER
CIP	CAST IN PLACE	OF	OUTSIDE FACE
CI	CONTROL JOINT / CONSTRUCTION JOINT	OH	OVERHEAD
CLL	CENTER LINE		
CLL	CONTRACT LIMIT LINE	PA	PUBLIC ADDRESS
CLR	CLEAR	PAF	POWER-ACTUATED FASTENER
CMU	CONCRETE MASONRY UNIT	PM	POWER MODIFICATION UNIT
COL	COLUMN	PL	PLATE / PROPERTY LINE
CONC	CONCRETE	PLAM	PLASTIC LAMINATE
CONT	CONTINUOUS	PLF	POUNDS PER LINEAR FOOT
CUH	CERAMIC TILE	PP	POWER PANEL
		PSF	POUNDS PER SQUARE FOOT
		PSI	POUNDS PER SQUARE INCH
		PT	PRESSURE-TREATED
		PVC	POLYVINYL CHLORIDE
		PKMT	PAVEMENT
		R	RISER / RADIUS
		RB	RESILIENT BASE
		RD	ROOF DRAIN
		RENF	REINFORCED
		REQD	REQUIRED
		RI	RIGHT
		RO	ROUGH OPENING
		ROW	RIGHT OF WAY
		RR	RUB-RAIL
		RTU	ROOF TOP UNIT (HVAC)
		SACT	SUSPENDED ACOUSTIC TILE CEILING
		SC	SOLID CORE
		SF	SQUARE FOOT / SUPPLY FAN
		SFRM	SPRAYED FIRE-RESISTIVE MATERIAL
		SHT	SHEET
		SIM	SIMILAR
		SK	SHEAR KEY
		SN	SANITARY NAPKIN (DISPENSER)
		SP	SPECIAL
		SS	STAINLESS STEEL
		STA	STATION
		STL	STEEL
		STRUC	STRUCTURAL
		T	TREAD
		TB	TACKBOARD
		T&B	TOP AND BOTTOM
		TBM	TEMPORARY BENCHMARK
		TCE	TOP CHORD EXTENSION
		TJ	TIE JOINT
		TO	TOP OF
		TOC	TOP OF CONCRETE
		TOF	TOP OF FOOTING
		TOM	TOP OF MASONRY
		TOP	TOP OF PIER
		TOS	TOP OF STEEL
		TOW	TOP OF WALL
		TP	TOILET PAPER (DISPENSER) / TEST PIT
		TS	TUBE STEEL
		TYP	TYPICAL
		UH	UNIT HEATER
		UNO	UNLESS NOTED OTHERWISE
		V	VENT PIPE / VERTICAL
		VB	VAPOR BARRIER
		VCT	VINYL COMPOSITION TILE
		VERT	VERTICAL
		VP	VISION PANEL
		VTR	VENT THROUGH THE ROOF
		W	WITH
		WC	WATER CLOSET
		WF	WIDE FLANGE
		WH	WATER HEATER
		W/O	WITHOUT
		WP	WORKING POINT
		WS	WEB STIFFENER
		WFF	WELDED WIRE FABRIC

GENERAL DEMOLITION NOTES:

- COORDINATE EXTENT OF DEMOLITION WITH LOCATIONS OF PARTITIONS DESCRIBED ON PLANS AND WITH LOCATIONS OF FINISHES NOTED AS EXISTING TO REMAIN.
- ANY WALL, PARTITION, OR SURFACE DISTURBED BECAUSE OF NEW WORK OR DEMOLITION SHALL BE PATCHED AND FINISHED CONTINUOUSLY TO THE NEAREST CORNER UNLESS NOTED OTHERWISE. MATCH EXISTING ADJACENT CONSTRUCTION FINISHES, CONTINUITY, AND FIRE RATINGS UNLESS NOTED OTHERWISE.
- PROTECT ALL FINISHES, MATERIALS AND EQUIPMENT NOTED AS EXISTING TO REMAIN. CONTRACTOR SHALL BE RESPONSIBLE TO REPLACE ALL FINISHES, MATERIALS, AND EQUIPMENT DAMAGED DURING CONSTRUCTION.
- DIMENSIONS INDICATED +/- ARE EXISTING CONDITION DIMENSIONS TO BE VERIFIED IN FIELD.
- CLEARLY IDENTIFY AND TAG MECHANICAL, PLUMBING, AND ELECTRICAL FIXTURES OR EQUIPMENT THAT ARE STILL IN USE PRIOR TO DEMOLITION TO AVOID ACCIDENTAL REMOVAL.
- WALL INDICATED WITH A DASHED LINE ARE TO BE REMOVED COMPLETE. IF WALL IS BEARING PRIOR TO REMOVAL, IF SO, CONTACT ARCHITECT/ENGINEER IMMEDIATELY.
- SEE M.E.P. DRAWINGS FOR THE SCOPE OF DEMOLITION IN THOSE DISCIPLINES.

DRAWING LIST:

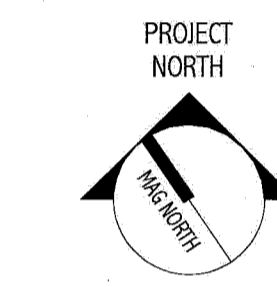
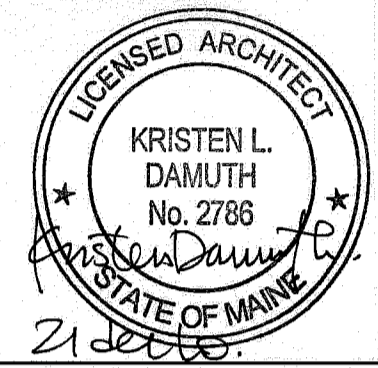
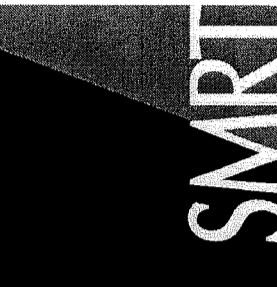
- G-001 COVER SHEET, LEGEND, ABBREVIATIONS & NOTES
- A-101 DEMO & FLOOR PLAN
- A-102 REFLECTED CEILING AND FINISH PLAN
- S-100 PARTIAL FLOOR FRAMING PLAN AND DETAILS
- M-001 LEGEND AND ABBREVIATIONS
- MD101 CATH LAB 1 DEMOLITION PLAN
- MH101 CATH LAB 1 HVAC DUCTWORK PLAN
- MP101 CATH LAB 1 MECHANICAL PIPING PLAN
- M-501 DETAILS
- M-502 DETAILS
- M-601 SCHEDULES, SPECIFICATIONS AND NOTES
- E-001 : CATH LAB #1 LEGEND AND ABBREVIATIONS
- E-002 : CATH LAB #1 SPECIFICATIONS SHEET 1
- E-003 : CATH LAB #1 SPECIFICATIONS SHEET 2
- ED101 : CATH LAB #1 DEMOLITION PLANS
- EP101 : CATH LAB #1 POWER AND RACEWAY PLANS
- EL101 : CATH LAB #1 LIGHTING PLAN
- EY101 : CATH LAB #1 SYSTEMS PLAN
- Q-001 VENDOR EQUIPMENT DRAWINGS, SHEET 1
- Q-002 VENDOR EQUIPMENT DRAWINGS, SHEET 2
- Q-003 VENDOR EQUIPMENT DRAWINGS, SHEET 3

APPLICABLE CODES:

- GENERAL:**
- INTERNATIONAL BUILDING CODE (IBC); 2009 EDITION
 - NATIONAL FIRE PROTECTION ASSOCIATION (NFPA 101); 2009 EDITION
 - ACCESSIBILITY GUIDELINES FOR BUILDINGS AND FACILITIES (ADA); 1994 EDITION
 - AIA GUIDELINES FOR DESIGN AND CONSTRUCTION OF HOSPITAL AND HEALTHCARE FACILITIES; 2006 EDITION
- PLUMBING:**
- NFPA 13: INSTALLATION OF SPRINKLER SYSTEMS; 2002
 - STATE OF MAINE INTERNAL PLUMBING CODE; 2005
- HVAC:**
- MECHANICAL CODE: INTERNATIONAL MECHANICAL CODE; 2003 EDITION
 - NFPA 99 HEALTHCARE FACILITIES; 2002 EDITION
 - ENERGY CODE: ASHRAE 90.1; 2001 EDITION WITH AMENDMENTS
 - ASHRAE 62; 2001 EDITION
 - FIRE AND SMOKE DAMPER INSTALLATION: NFPA 90A AND NFPA 10; 2003 EDITION
 - DUCT MOUNTED SMOKE DETECTORS: NFPA 72 EDITION
- ELECTRICAL:**
- NFPA 70; 2005 EDITION
 - NFPA 72; 2003 EDITION
 - IESNA LIGHTING HANDBOOK REFERENCE AND APPLICATION, 9th EDITION

144 Fore Street, P.O. Box 618
Portland, Maine 04104
Tel: (207) 772-2866
Fax: (207) 772-1070
www.smartc.com

ARCHITECTURE
ENGINEERING
PLANNING
INTERIOR DESIGN
COMMISSIONING



MAINE MEDICAL CENTER
CATH. LAB # 1
ISSUED FOR CONSTRUCTION
12.21.10

REV	DATE	DESCRIPTION
0	12.21.10	ISSUED FOR CONSTRUCTION

GRAPHIC SCALE:
0' 1'

SCALE: As indicated
PROJECT MANAGER: ID
DRAWN BY: ART
DATE OF RECORD: ID
PROJECT NO: 10113-00
DATE: 12.21.10

SHEET TITLE:
COVER SHEET,
LEGEND,
ABBREVIATIONS &
NOTES

SHEET No. G-001