



Maine Medical Center

FLOWER SHOP RENOVATIONS

Portland, Maine
MMC Project No. 210038

ISSUED FOR SD PRICING

CODE COMPLIANCE INFORMATION

APPLICABLE CODES AND GUIDELINES

INTERNATIONAL BUILDING CODE (IBC) 2003 EDITION
NFPA 101 LIFE SAFETY CODE, 2006 EDITION
AMERICANS WITH DISABILITIES ACT (ADA)
AIA GUIDELINES FOR DESIGN AND CONSTRUCTION OF
HEALTHCARE FACILITIES, 2006 EDITION

EXISTING CONSTRUCTION TYPE

IBC - TYPE 1A
NFPA - TYPE 1 (3,3,2)

OCCUPANCY CLASSIFICATION

IBC - INSTITUTIONAL I-2
NFPA - CHAPTER 18 NEW HEALTHCARE

FIRE SUPPRESSION

FULLY SPRINKLERED PER NFPA 13

DRAWING INDEX

ARCHITECTURAL

GI001 COVER SHEET
AE101 FLOOR PLANS AND REFLECTED CEILING PLAN
AE201 INTERIOR ELEVATIONS AND SCHEDULES

MECHANICAL

P-100 PLUMBING PLAN AND SCHEDULE
M-100 MECHANICAL PLAN, SCHEDULES AND DETAILS

ELECTRICAL

E-100 ELECTRICAL PLANS AND DETAILS

PROJECT LOCATION:

EAST TOWER, GROUND FLOOR
MAINE MEDICAL CENTER (BRAMHALL CAMPUS)
22 BRAMHALL STREET
PORTLAND, ME 04102

DESIGN GROUP COLLABORATIVE

ARCHITECTURE DESIGN + PLANNING

22 Free Street Suite 303
PORTLAND, MAINE 04101
T (207) 699-3300
F (207) 669-3310

---	---	---
---	---	---
---	---	---
REV.	DESCRIPTION	DATE

ISSUED FOR SD PRICING
4/2/10

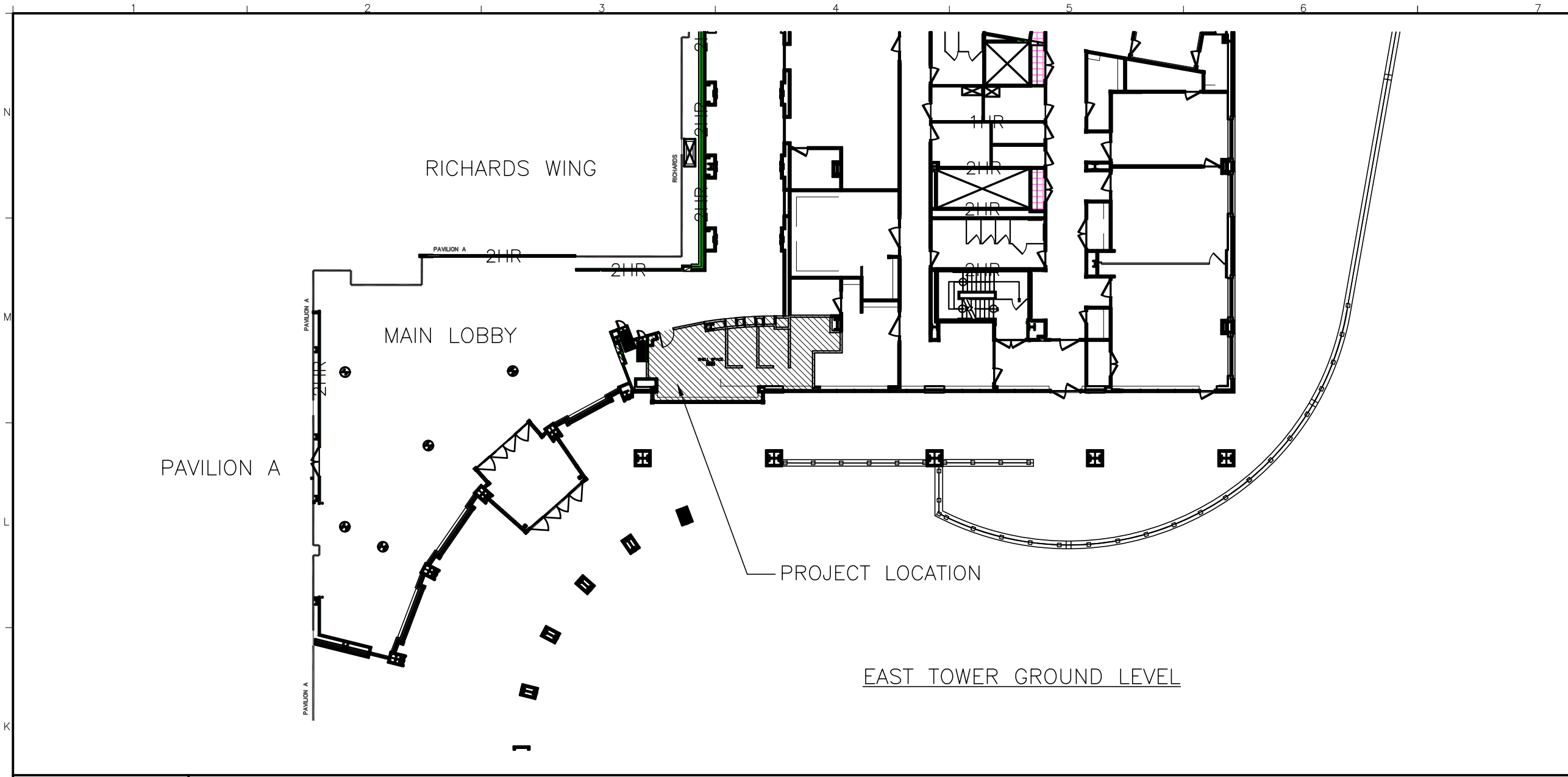
CURRENT ISSUE STATUS:



MAINE MEDICAL CENTER
FLOWER SHOP RENOVATIONS
PORTLAND, MAINE

COVER SHEET

SHEET TITLE:	
DATE:	4/2/10
SCALE:	AS NOTED
PROJECT NO.:	09027
DRAWN BY:	CFG
DATE OF RECORD:	CFG
SHEET No. GI000	



REMOVALS NOTES:

1. ALL BUILDING STRUCTURAL ELEMENTS SHALL REMAIN.
2. PROTECT ALL EXISTING MATERIALS AND FINISHES. ANY MATERIALS OR FINISHES DISTURBED OR DAMAGED DURING DEMOLITION AND NEW WORK SHALL BE REPAIRED OR REPLACED AND FINISHED TO MATCH ADJACENT CONSTRUCTION CONTINUOUSLY TO NEAREST CORNER.
3. DURING DEMOLITION AND NEW WORK, WHERE EXISTING CONDITIONS ARE FOUND TO BE DEFECTIVE, NOTIFY OWNER AND ARCHITECT AND PROVIDE CHANGE PROPOSAL FOR CORRECTION OF THESE CONDITIONS.

REMOVALS KEY NOTES:

- 1 REMOVE EXISTING DOOR, FRAME AND HARDWARE AND RETAIN FOR REUSE.
- 2 REMOVE EXISTING PART-HEIGHT PARTITIONS.
- 3 REMOVE PORTION OF EXISTING WALL.
- 4 REMOVE EXISTING LIGHT FIXTURES.
- 5 REMOVE PORTION OF EXISTING 2 HR WALL TO APPROX. 2' AFF AS REQUIRED FOR RECESS FOR BACK-MOUNTED CONDENSATE EVAPORATOR AT DISPLAY COOLER.

PARTITION TYPES:

- 1 FULL-HEIGHT WALL: 4" METAL STUDS SPACED 16" O.C. FULL HEIGHT TO STRUCTURE. (1) LAYER 5/8" GYP. BD. FULL HEIGHT TO STRUCTURE BOTH SIDES. PROVIDE SLIP TRACK AT TOP OF WALL.
- 2 ACOUSTICAL SEPARATION WALL: 4" METAL STUDS SPACED 16" O.C. FULL HEIGHT TO STRUCTURE. (1) LAYER 5/8" GYP. BD. FULL HEIGHT TO STRUCTURE BOTH SIDES. PROVIDE FIBERGLASS BATT INSULATION FULL DEPTH OF STUDS. PROVIDE ACOUSTICAL SEALANT AT TOP AND BOTTOM OF WALL. PROVIDE SLIP TRACK AT TOP OF WALL.
- 3 CHASE WALL: 4" METAL STUDS SPACED 16" O.C. TO 6" ABOVE CEILING. BRACE TOP OF WALL TO STRUCTURE. (1) LAYER 5/8" GYP. ON EXPOSED SIDE.
- 4 INFILL EXISTING WALL OPENING. MATCH EXISTING WALL THICKNESS AND MATERIALS.
- 5 2-HOUR RATED SHAFTWALL (U.L. U415 AND NER-258): 2 1/2" C-H STUDS WITH 1" GYPSUM LINER PANEL AND (2) LAYERS OF 1/2" TYPE X GYP. BD. ON SIDE EXPOSED TO VIEW.

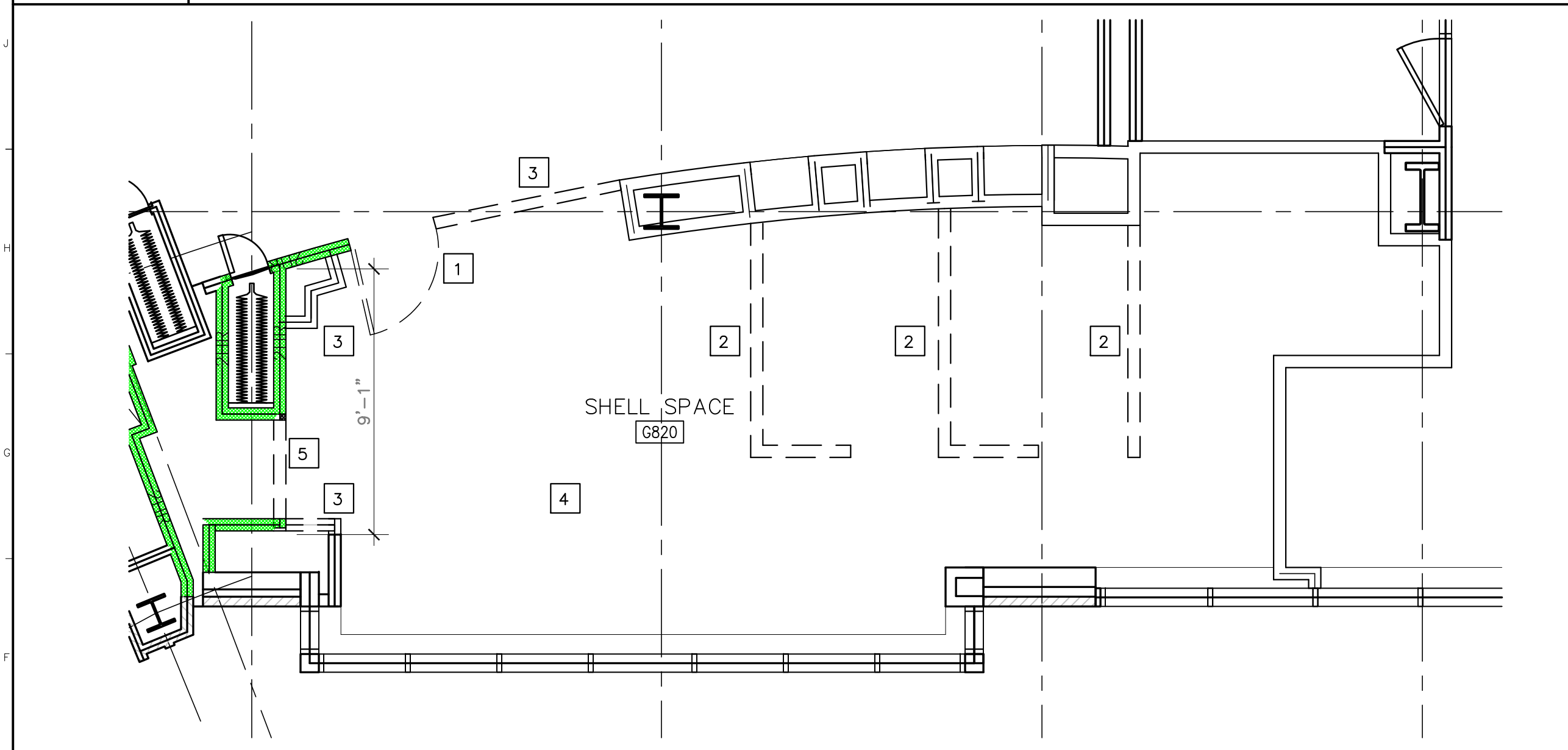
PLAN NOTES:

- A PROVIDE SHEET WALL PROTECTION TO 4'-0" AFF
- B PROVIDE SHEET WALL PROTECTION TO 2'-0" AFF
- C PROVIDE BLOCKING FOR HANGING PLANT BRACKETS AT 5'-0" AND 7'-0" AFF.
- D 1" DEEP PIPING CHASE WITHIN CASEWORK, BELOW COUNTERTOP.

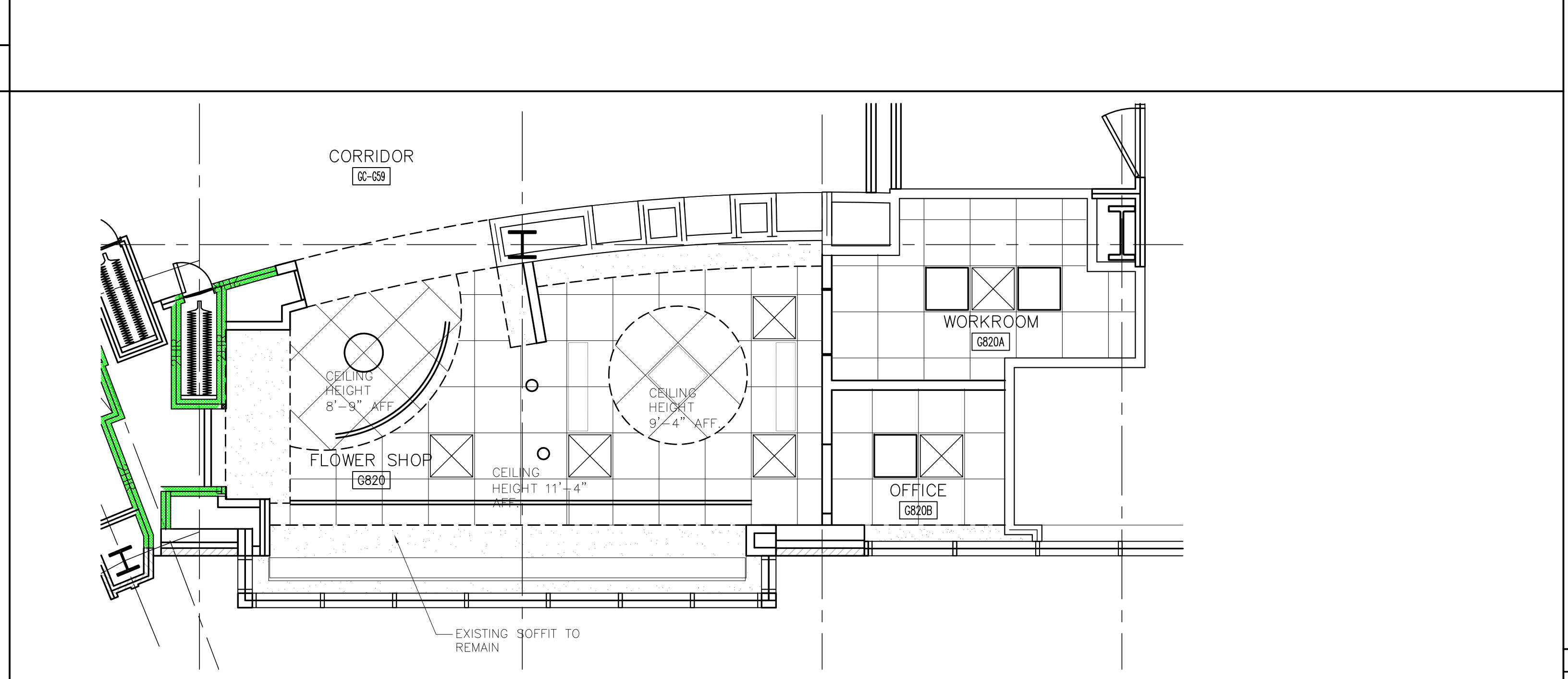
GENERAL NOTES:

1. DO NOT SCALE DRAWINGS
2. FIELD VERIFY ALL DIMENSIONS PRIOR TO PROCEEDING WITH WORK. IF DISCREPANCIES ARE FOUND, NOTIFY ARCHITECT IN WRITING FOR CLARIFICATION BEFORE PROCEEDING WITH WORK.
3. ALL DIMENSIONS ARE MEASURED TO FACE OF FINISH.
4. PROVIDE 2 HR RATED FIRESTOPPING SYSTEM (U.L. RATED) AT FLOOR PENETRATIONS. SEAL PENETRATIONS AT EXISTING CORRIDOR WALLS TO LIMIT THE TRANSFER OF SMOKE.
5. DOOR JAMBS SHALL BE LOCATED 6" FROM CORNER UNLESS NOTED OTHERWISE. MAINTAIN 18" CLEAR FROM STRIKE SIDE OF DOOR TO ANY OBSTRUCTION ON PULL SIDE. MAINTAIN 12" CLEAR FROM STRIKE SIDE OF DOOR TO ANY OBSTRUCTION ON PUSH SIDE WHERE DOOR HARDWARE INCLUDES CLOSER.
6. PROVIDE BLOCKING FOR ALL CASEWORK, TOILET ACCESSORIES, WALL-MOUNTED DOOR STOPS, AND WALL-MOUNTED EQUIPMENT.
7. PATCH HOLES AND CRACKS IN EXISTING WALLS TO RECEIVE NEW PAINT.
8. PROVIDE FIRESTOPPING AT ALL MECHANICAL, ELECTRICAL AND PLUMBING PENETRATIONS IN FIRE-RATED PARTITIONS AND FLOOR/CEILING ASSEMBLIES. MATCH WALL FIRE RATING.
9. COORDINATE MECHANICAL, PLUMBING AND ELECTRICAL FLOOR AND WALL PENETRATIONS UNLESS NOTED OTHERWISE. ELECTRICAL CONDUIT AND WIRING, PLUMBING AND MECHANICAL PIPING SHALL BE CONCEALED AND WALL FRAMING SHALL BE OF ADEQUATE DIMENSION TO ACCOMPLISH THIS WITHOUT CHANGES IN WALL PLANE.
10. CONTRACTOR SHALL PROVIDE INFECTION CONTROL ENCLOSURES PER MMC STANDARDS. AVOID ANY IMPACT TO THE AREAS DESIGNATED FOR OWNER USE AND OCCUPANCY.

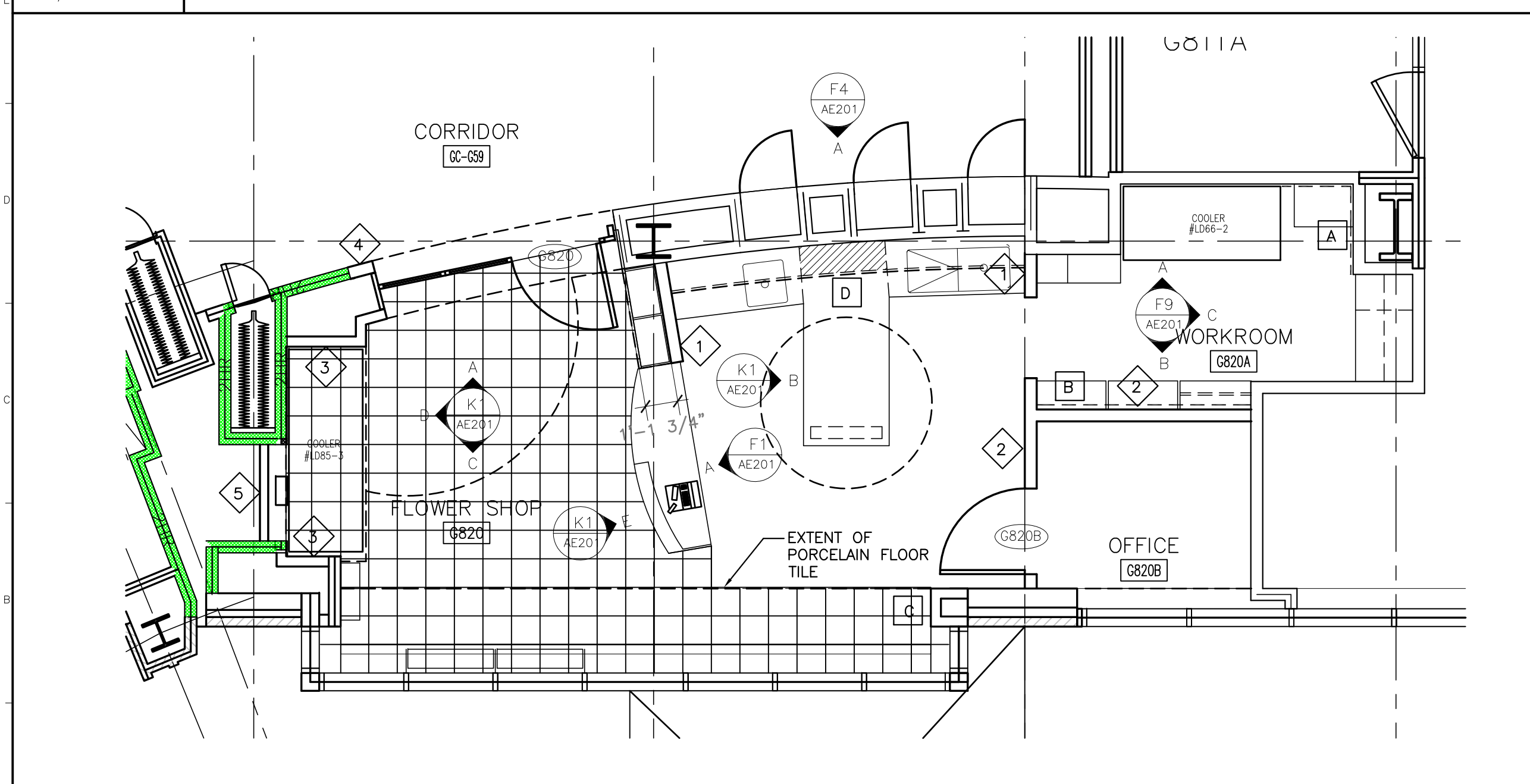
J1 PROJECT LOCATION
N.T.S.



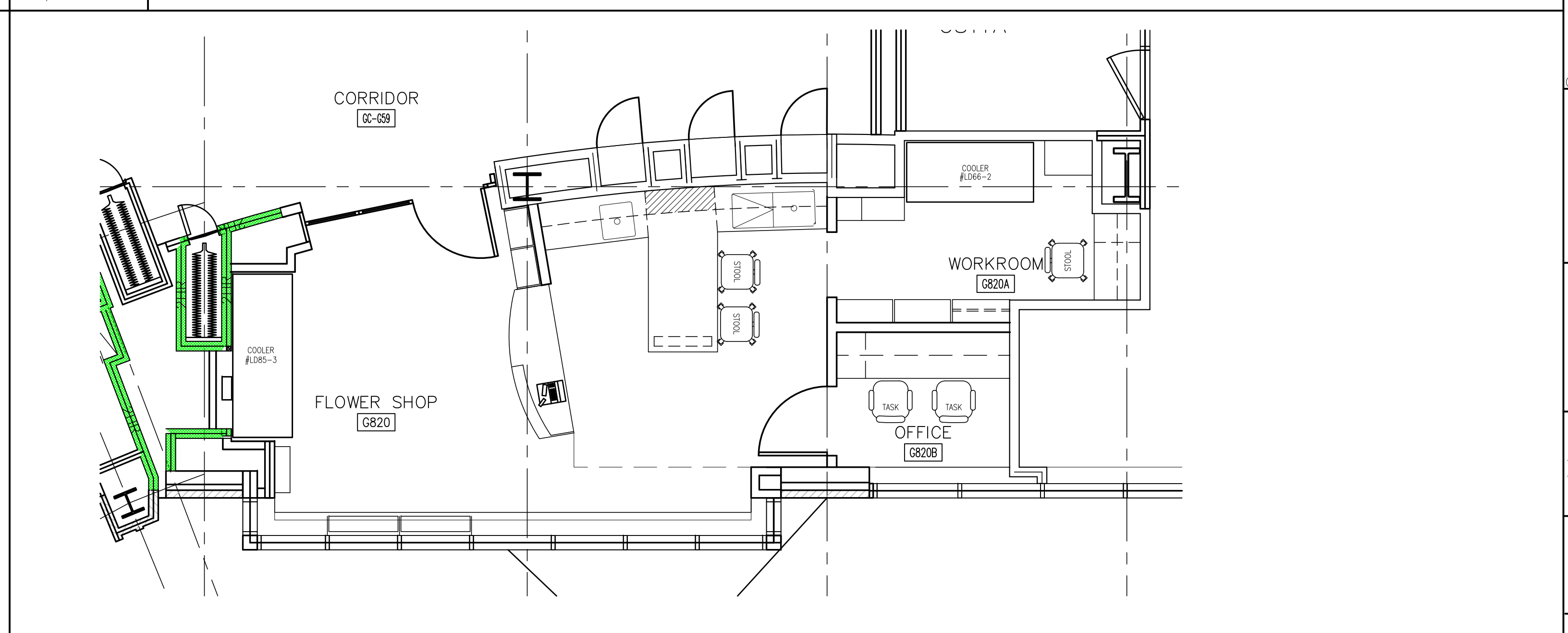
E1 REMOVALS PLAN
1/4" = 1'-0"



E1 REFLECTED CEILING PLAN
1/4" = 1'-0"



A1 FLOOR PLAN
1/4" = 1'-0"



A7 FURNITURE/ EQUIPMENT PLAN
1/4" = 1'-0"
FOR REFERENCE

REV.	DESCRIPTION

ISSUED FOR SD PRICING
4/2/10

CURRENT ISSUE STATUS:

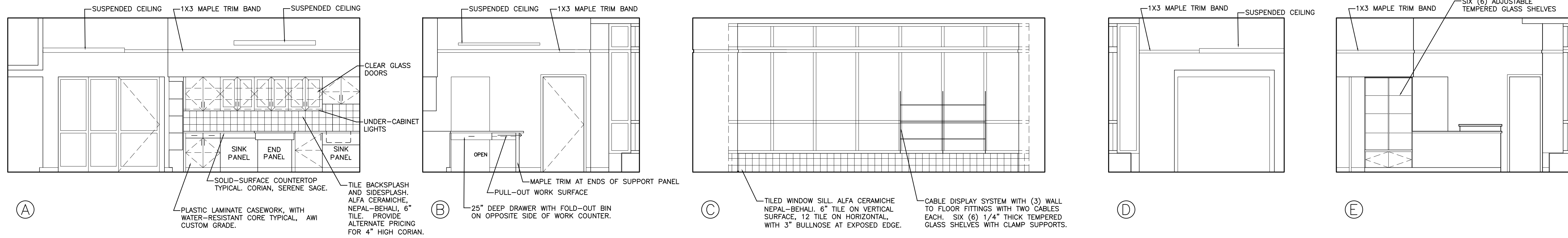
PROJECT NORTH

DESIGN GROUP COLLABORATIVE
ARCHITECTURE DESIGN + PLANNING
22 FREE STREET
PORTLAND, MAINE 04101
(207) 699-3300

MAINE MEDICAL CENTER
FLOWER SHOP RENOVATIONS
PORTLAND, MAINE

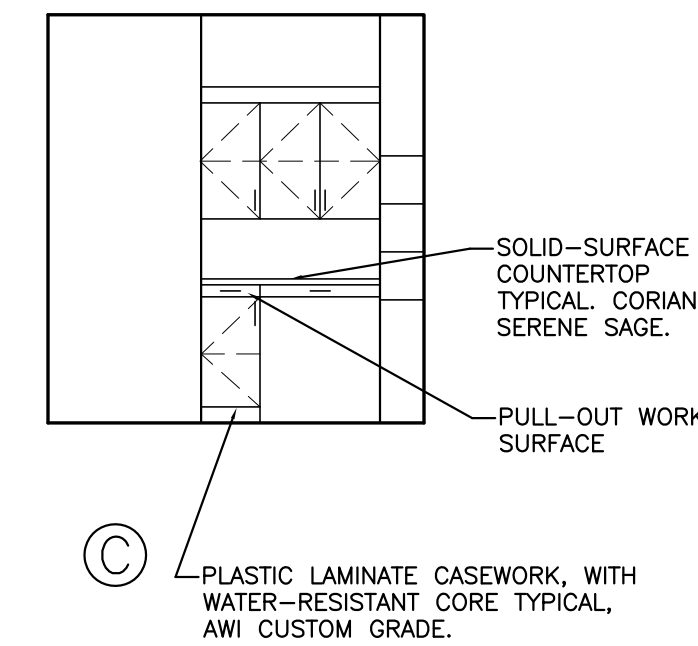
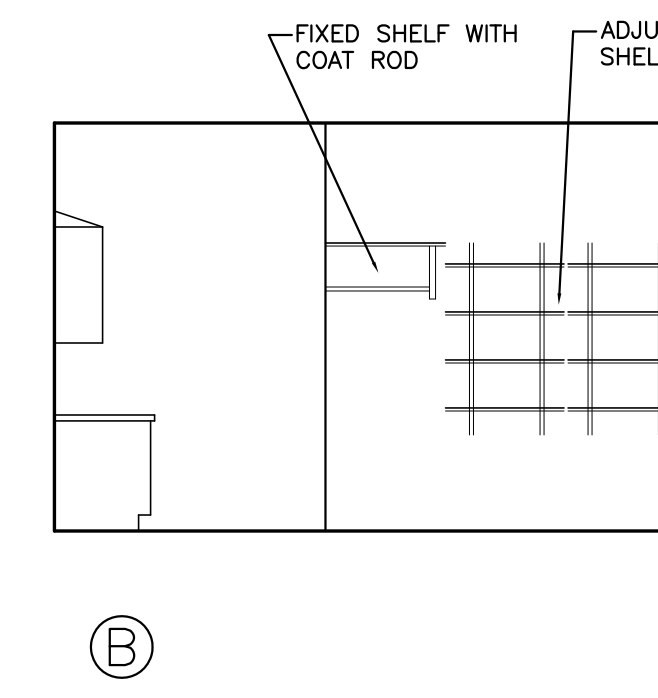
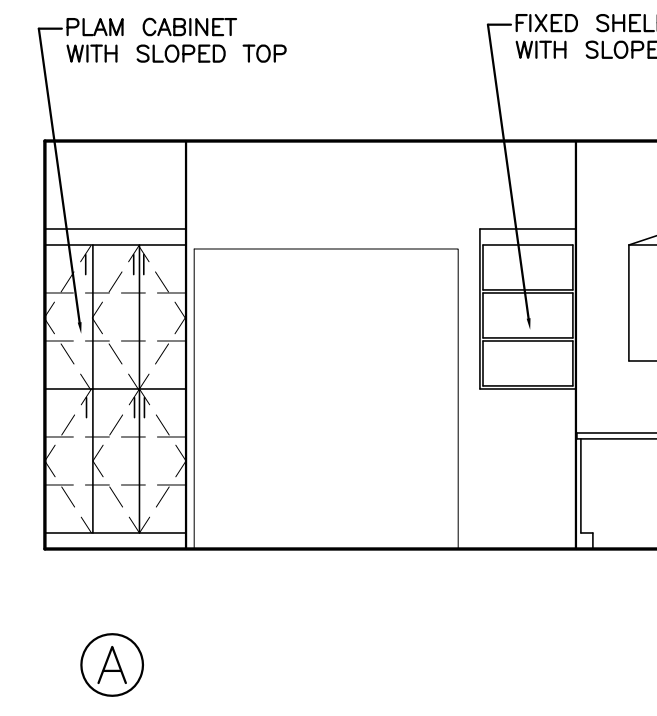
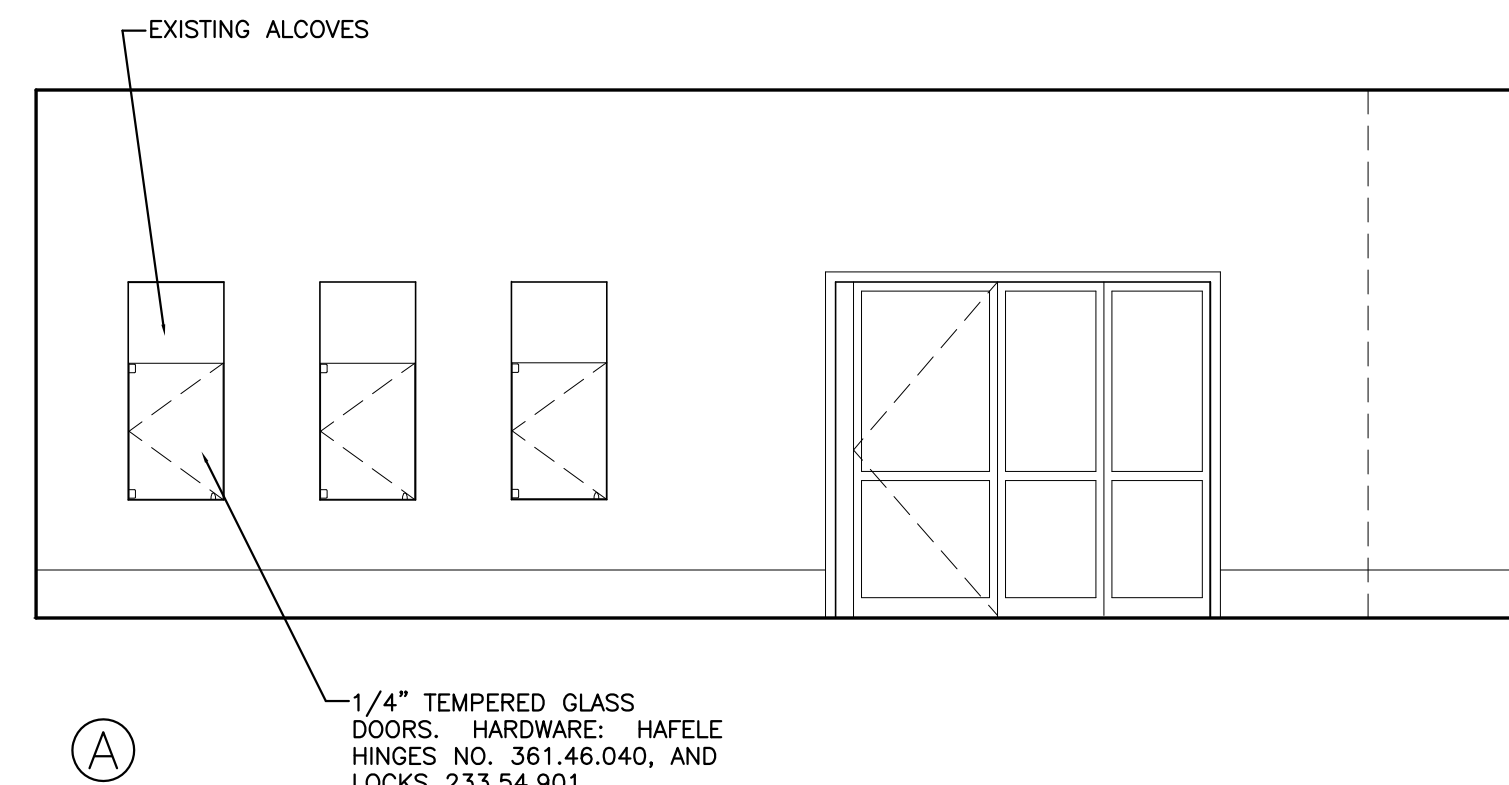
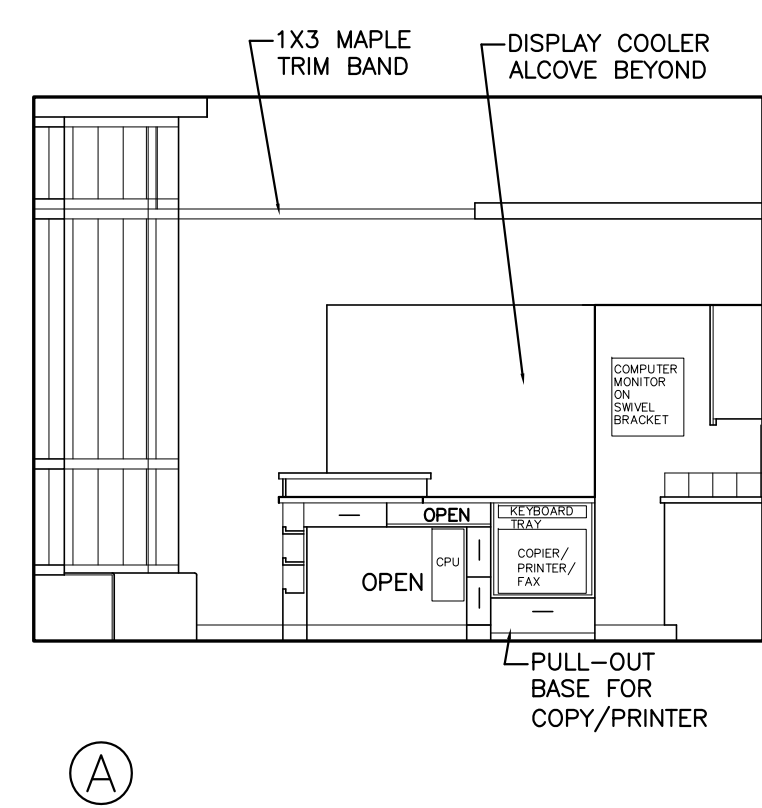
FLOOR PLANS AND REFLECTED CEILING PLAN

SHEET TITLE:	4/2/10		GRAPHIC SCALE:	1" = 10'
DATE:	AS NOTED			
SCALE:				
PROJECT NO.:	09027	SHEET NO.:	AE 101	
DRAWN BY:	CFG			
A/E OF RECORD:	CFG			



K1 INTERIOR ELEVATIONS – FLOWER SHOP

1/4" = 1'-0"



F1 INTERIOR ELEVATIONS – FLWR SHOP

1/4" = 1'-0"

F4 INTERIOR ELEVATIONS – CORRIDOR

1/4" = 1'-0"

F9 INTERIOR ELEVATIONS – WORKROOM

1/4" = 1'-0"

ROOM FINISH SCHEDULE

NO.	ROOM NAME	FLOOR	BASE	WALL				CEILING	HEIGHT	REMARKS
				NORTH	EAST	SOUTH	WEST			
GC-G59	CORRIDOR	EXIST	EXIST	EXIST	EXIST	EXIST	EXIST	EXIST	1, 2	
G820	FLOWER SHOP	CT/RUBBER	CT/RUBBER	PTD-1	PTD-1	PTD-1	ACT	VARIES	3	
G820A	WORKROOM	RUBBER	RUBBER	PTD-1	PTD-2	PTD-1	PTD-1	ACT	8'-6"	
G820B	OFFICE	RUBBER	RUBBER	PTD-1	PTD-2	PTD-1	PTD-1	ACT	11'-4"	

FINISH SCHEDULE REMARKS KEY:
 1. PAINT CORRIDOR WALLS AND CEILINGS AFFECTED BY NEW WORK.
 2. PATCH PORCELAIN TILE FLOORING AND BASE AT AREAS AFFECTED BY NEW WORK.
 3. ACCENT PAINT COLOR ABOVE WOOD TRIM BAND.

DOOR SCHEDULE

DOOR NO.	DOOR			GLAZE	DETAILS		HWS	FIRE RTG. (MIN.)	
	SIZE	MAT'L	ELEVATION		MAT'L	ELEV			
G820	8'-6" X 7'-0"	ALUM	*	TEMP.	ALUM	*	1	*	KAWNEER 1049 SLIDING MALL FRONT SYSTEM WITH EGRESS DOOR
G820B	3'-0" X 7'-0"	WOOD	F	*	HM	1	2	*	REUSE EXISTING DOOR, FRAME & HDW. IF POSSIBLE

DOOR HARDWARE:
 1. MANUFACTURER'S STANDARD WITH ENTRANCE LOCK FUNCTION.
 2. HINGES, LOCKSET (OFFICE FUNCTION), WALL STOP.

FINISH SPECIFICATIONS:

FLOOR TILE: ALFA CERAMICHE, NEPAL-BEHALI 12"x12" WITH EPOXY GROUT.

RUBBER FLOORING: NORA ENVIRONCARE ACOUSTIC.

BASE: 4" JOHNSONITE RUBBER COVE BASE, TRADITIONAL PROFILE.

PAINT: PAINT ALL NEW AND EXISTING WALLS AND TRIM. PROVIDE ONE FINISH COAT AT EXISTING SURFACES. PROVIDE PRIMER AND 2 COATS AT NEW SURFACES. COLORS TO BE SELECTED. ALLOW FOR 2 COLOR SELECTIONS. PAINT PRODUCTS ARE AS FOLLOWS:

INTERIOR LATEX PRIMER/SEALER:
 ICI PREP AND PRIME BASE COAT #1000. TYPICAL AT NEW SURFACES.

INTERIOR LATEX (LOW SHEEN):
 ICI ULTRAHIDE #1414. TYPICAL AT DRYWALL SURFACES.

INTERIOR LATEX (SEMIGLOSS):
 ICI DEV FLEX #4216. TYPICAL AT DOOR FRAMES TRIM.

ACOUSTICAL CEILING: USG RADAR CLIMA PLUS (HIGH NRC) #22311, 2X4, SQUARE-EDGE IN 15/16" GRID.

EDGE TRIM AT SUSPENDED CEILING AREAS: ARMSTRONG AXIOM 4" TRIM CHANNEL FOR CURVED APPLICATION.

A1 DOOR AND FINISH SCHEDULES

N.T.S.

REV.	DESCRIPTION

ISSUED FOR SD PRICING
4/2/10

CURRENT ISSUE STATUS:

DESIGN GROUP COLLABORATIVE
ARCHITECTURE DESIGN + PLANNING
 22 FREE STREET
 PORTLAND, MAINE 04101
 (207) 699-3300

MAINE MEDICAL CENTER
FLOWER SHOP RENOVATIONS
 PORTLAND, MAINE

INTERIOR ELEVATIONS AND SCHEDULES

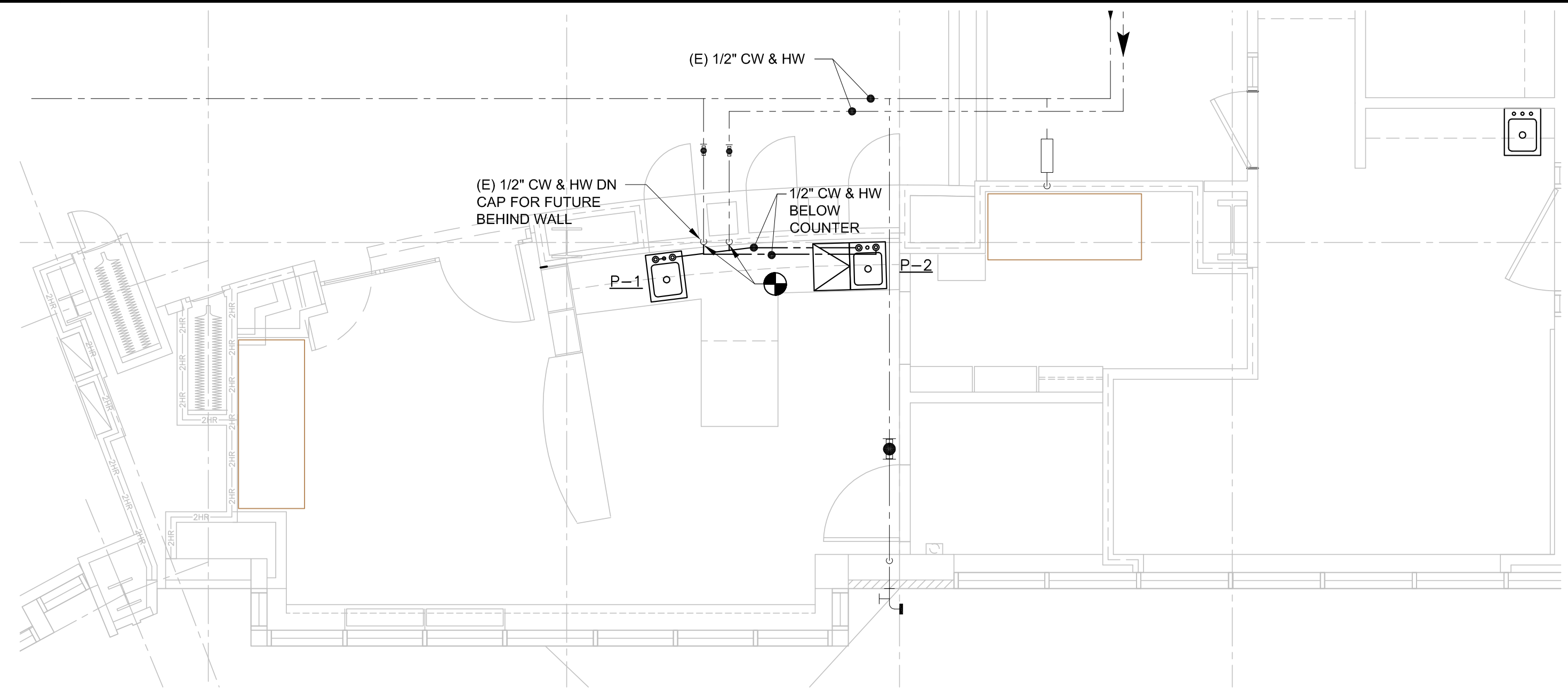
DATE:	4/2/10	GRAPHIC SCALE:	1" = 0'
SCALE:	AS NOTED		
PROJECT NO.:	09027	SHEET NO.:	
DRAWN BY:	CFG		
A/E OF RECORD:	CFG		

AE 201

PLUMBING FIXTURE SCHEDULE							
TAG	DESCRIPTION	BRANCH SIZES				FAUCET NOTES	NOTES
		CW	HW	VENT	WASTE		
P-1	HAND/PREP SINK	1/2"	1/2"	1 1/2"	1-1/2"	WIDESPREAD FAUCET	OFFSET / REMOVABLE BASKET DRAIN STRAINER
P-2	WORK SINK	1/2"	1/2"	1 1/2"	1-1/2"	DECK MOUNTED SWING HOSE & SPRAY ASSEMBLY	REMOVABLE BASKET DRAIN STRAINER

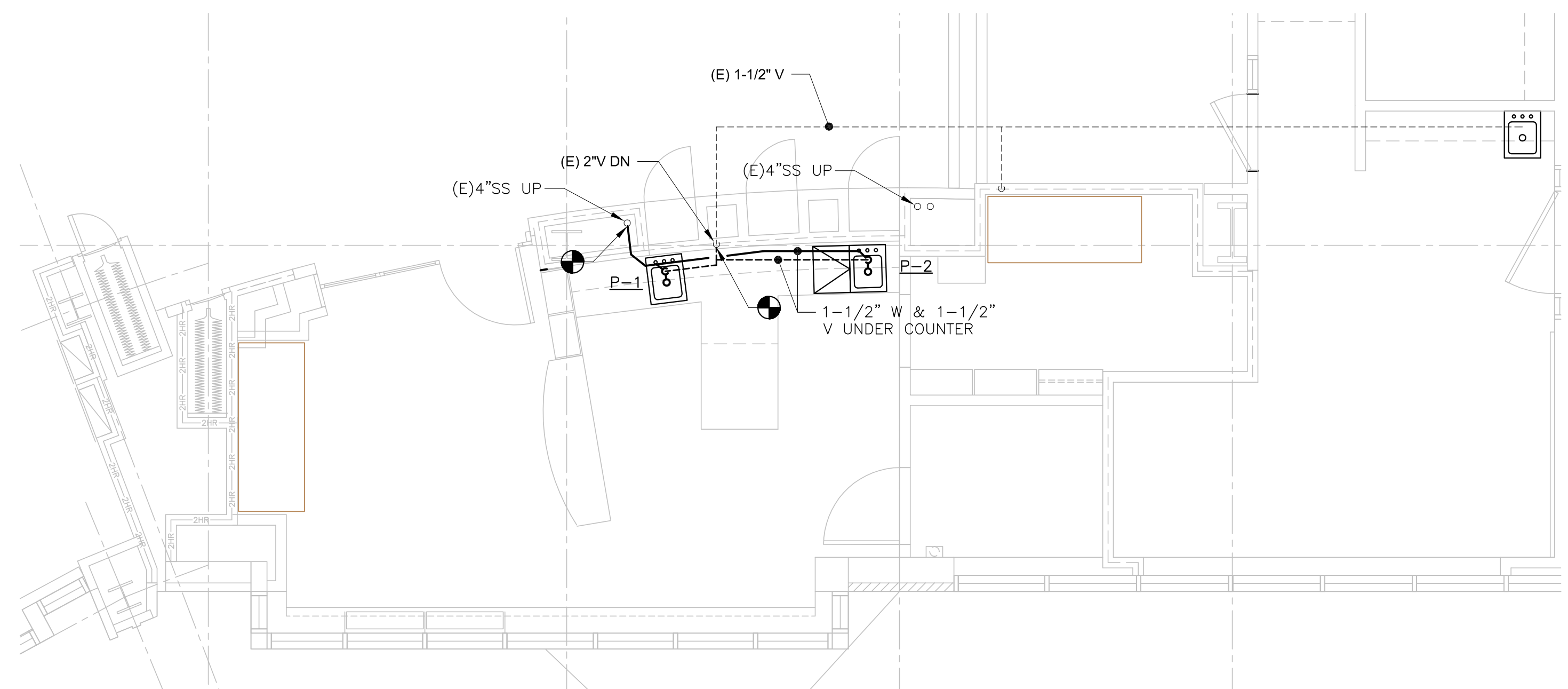
F1 PLUMBING ~ SCHEDULES

NONE



C1 PLUMBING DOMESTIC PLAN

1/4" = 1'-0"



A1 PLUMBING SANITARY PLAN

1/4" = 1'-0"

160 Veranda Street
 Portland, Maine 04103
 T: 207.221.2260
 F: 207.221.2266
 Web: www.allied-eng.com

Allied Engineering
 Structural Mechanical Electrical Commissioning

R E V I S I O N S

NUMBER	DATE	BY	DESCRIPTION

Date: _____
 Drawn By: SCL
 Checked By: IAM
 Project Mgr: IAM
 Project No: 10031
 Cad File: 10031P.DWG
 Graphic Scale: 0 1"
 Scale: _____

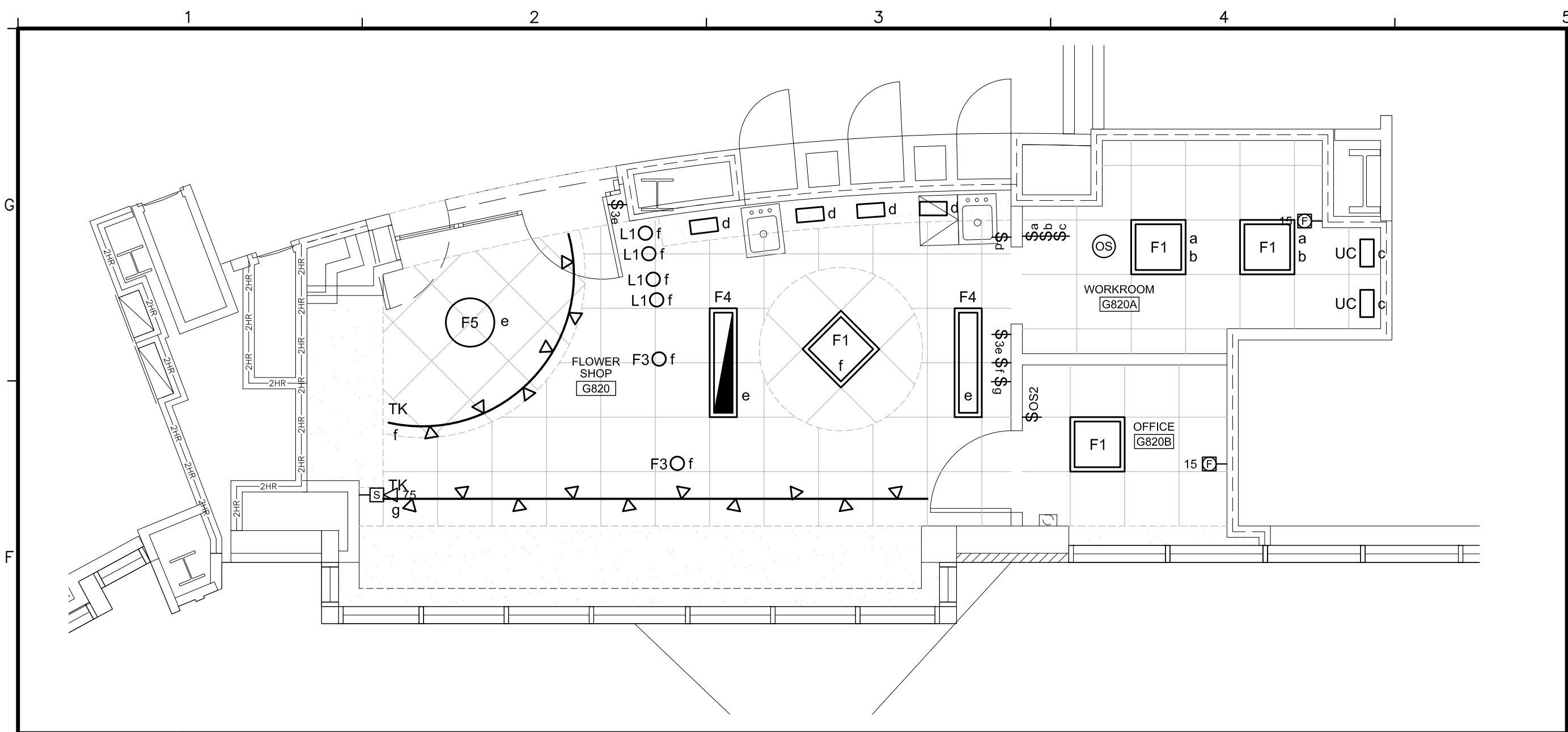
PLUMBING PLAN AND SCHEDULE

MAINE MEDICAL CENTER
 FLOWER SHOP PROJECT
 PORTLAND, MAINE

P-100

SD Pricing ~ 02 April 2010 ~ NOT FOR CONSTRUCTION

N:\Projects\2010\10031 ~ MMC Flower Shop\06 Drawing Files\10031P.dwg Apr 02, 2010 - 2:54pm

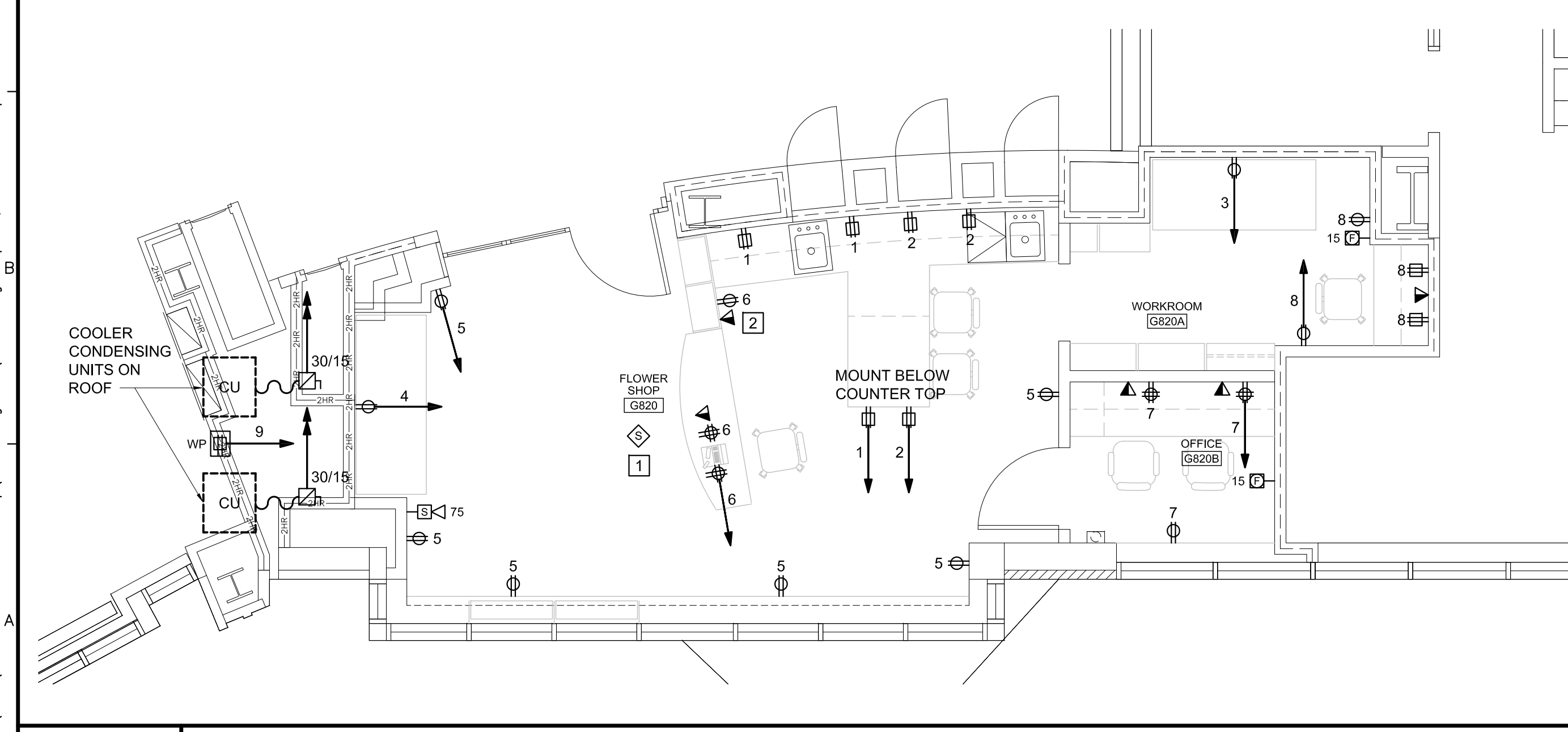


F1 LIGHTING PLAN
1/4" = 1'-0"

LUMINAIRE SCHEDULE									
TYPE	DESCRIPTION	MFR	CATALOG SERIES NUMBERS - SEE NOTE 1	MOUNTING	VOLTS	LAMP			KEY NOTES
						QTY	TOTAL WATTS	TYPE	
F1	2x2 VOLUMETRIC	LITHONIA	2RT5-14T5-GE8115S	RECESSED	120	2	39	F14 T5 3000K	2
F2	2x4 VOLUMETRIC	LITHONIA	2RT5-28T5-GE895	RECESSED	120	2	66	F28T5 3000K	2
F3	DECORATIVE PENDANT	TECH LIGHTING	700-TD-MNTP-A-S-CF277	PENDANT 9' 0" AFF	120	1	36	CF32W TRT 3000K	
F4	1x4 VOLUMETRIC	LITHONIA	RT5-228T5-GE810PS	RECESSED	120	2	66	F28T5 3000K	2
F5	ROUND SURFACE MOUNT	PRUDENTIAL	P3920-WA-TMW-D1-SC-SUR	CEILING SURFACE	120	2		39W BIA3 3000K	
L1	LED DISPLAY CASE DOWNLIGHT	BRUCK	135651-1MC/FL/C	RECESSED	120	1	3	3W LED	3
TK	FLEXIBLE TRACK	TECH LIGHTING	MONORAIL TRACK SYSTEM/ 700-MO-HEL-15-12-S-LED HEAD WITH 700-FIRA-S OPTIC	PENDANT 9' 0" AFF	120	1	5.8	3000K LED	3,4
UC	LED UNDERCABINET LIGHT	AMERICAN FLUOR	DDU28LED WITH HARD WIRE OPTION	UNDERCABINET	120	28	5	LED	
E1	LED EXIT SIGN	LITHONIA	LQM S W 3 R	SEE DRAWINGS	120	--	--	LED	

NOTES:
 1 NOTE THAT THESE NUMBERS ARE NOT COMPLETE CATALOG #S. PROVIDE ALL REQUIREMENTS ON SCHEDULE, NOTES, SPECS, AND DRAWINGS COMBINED.
 2 PROVIDE PROGRAMMED START BALLAST FOR ROOMS WITH OCCUPANCY SENSORS.
 3 PROVIDE WITH COMPATIBLE DRIVERS, TRANSFORMERS, ETC. SIZED FOR TOTAL LOAD.
 4 PROVIDE LENGTH AND NUMBER OF HEADS SHOWN ON PLANS
 5 ALL MOUNTING HEIGHTS ARE TO BOTTOM OF FIXTURE.

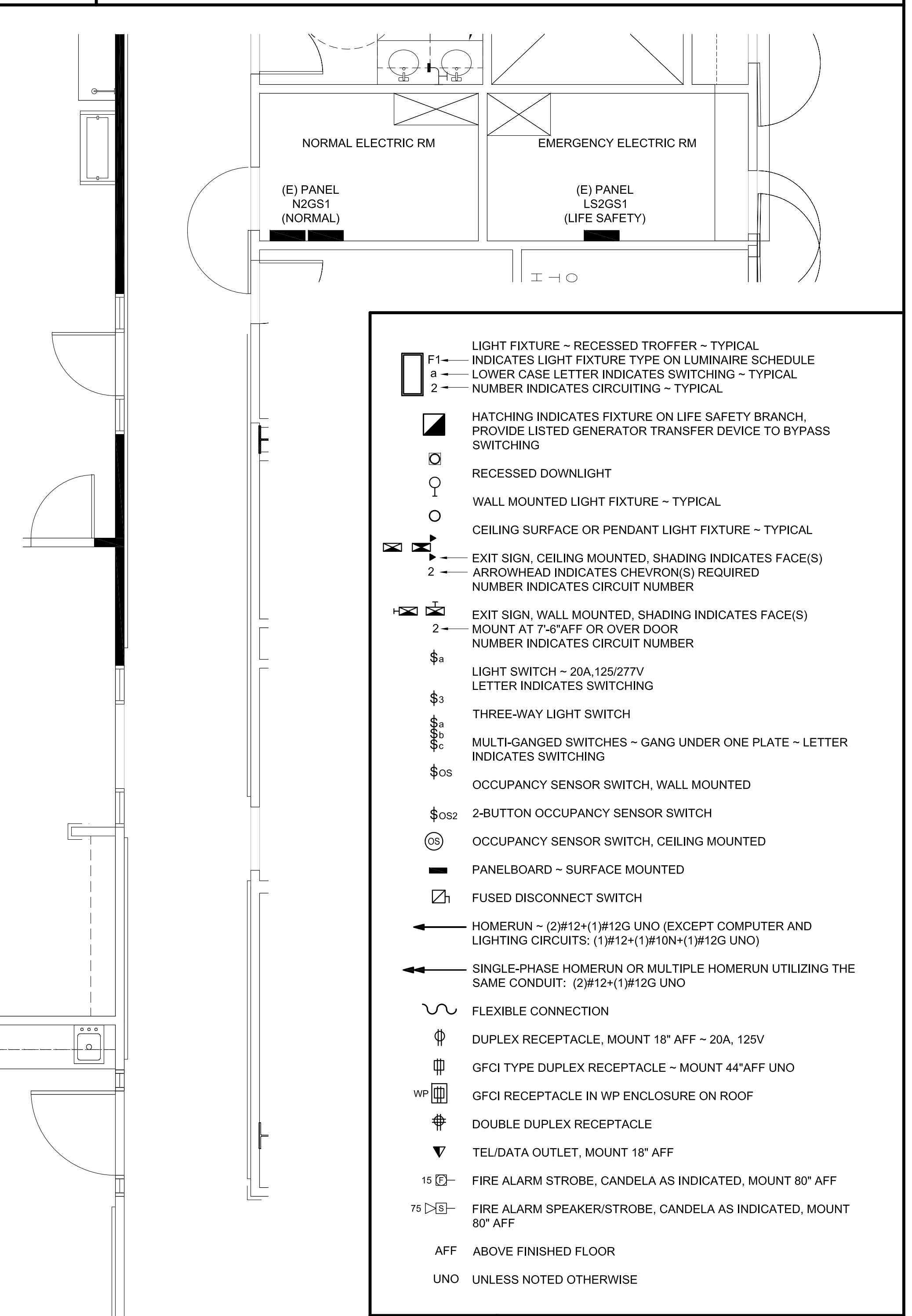
C1 LUMINAIRE SCHEDULE



A1 POWER AND SYSTEMS PLAN
1/4" = 1'-0"

- BRANCH CIRCUIT WIRING NOT SHOWN. BRANCH CIRCUIT NUMBERS INDICATED REPRESENT INTENDED GROUPING, NOT ACTUAL CIRCUIT NUMBERS. CONNECT CIRCUITS TO AVAILABLE SPACES IN EXISTING PANELS.
- DISCONNECT, REMOVE, RELOCATE, AND RECONNECT ELECTRICAL CONDUIT, WIRING, DEVICES, BOXES, FIXTURES, EQUIPMENT, ETC. AS INDICATED AND AS REQUIRED TO FACILITATE THE WORK OF THIS PROJECT. THESE DRAWINGS ARE NOT INTENDED TO INDICATE ALL ITEMS THAT MAY NEED TO BE REMOVED OR RELOCATED.
- DO NOT SCALE THE DRAWINGS. REFER TO EXISTING CONDITIONS FOR EXACT DIMENSIONS.
- THE LOCATION OF EQUIPMENT, OUTLETS, ETC. AS GIVEN ON THE DRAWINGS, IS APPROXIMATE. IT SHALL BE UNDERSTOOD THAT THESE LOCATIONS ARE SUBJECT TO MODIFICATION AS MAY BE FOUND NECESSARY OR DESIRABLE AT THE TIME OF INSTALLATION IN ORDER TO MEET PROJECT REQUIREMENTS. SUCH CHANGES SHALL BE MADE WITHOUT EXTRA CHARGE.
- COORDINATE ALL WORK WITH OTHER DIVISIONS AND THE OWNER.
- VERIFY EXACT POWER REQUIREMENTS OF EQUIPMENT PRIOR TO ROUGH IN.
- WIRE AND CONNECT EQUIPMENT IN ACCORDANCE WITH EQUIPMENT MANUFACTURER'S WRITTEN INSTRUCTIONS AND RECOMMENDATIONS.
- NO WIRING THAT BECOMES UNUSED AS PART OF THIS PROJECT SHALL BE ABANDONED IN PLACE.

G5 ELECTRICAL GENERAL NOTES



B1 LEGEND
NO SCALE

- RELOCATE EXISTING SMOKE DETECTOR TO ACOUSTICAL CEILING
- PROVIDE POWER AND DATA FOR COMPUTER MONITOR, COORDINATE EXACT LOCATION WITH OWNER

A7 KEY NOTES

- FURNISH ALL LABOR, MATERIAL, EQUIPMENT, AND SUPPLIES AND PERFORM ALL OPERATIONS NECESSARY TO PROVIDE A COMPLETE AND OPERABLE ELECTRICAL SYSTEM AS INDICATED ON THE DRAWINGS, SPECIFIED, AND REQUIRED BY CODE OR BUILDING STANDARDS.
- COMPLIANCE: ALL WORK SHALL BE PERFORMED IN COMPLETE COMPLIANCE WITH THE NATIONAL ELECTRICAL CODE, ALL STATE OR LOCAL CODES, AND AUTHORITIES HAVING JURISDICTION.
- THE CONTRACTOR SHALL PAY ALL FEES FOR PERMITS AND OBTAIN ALL APPROVALS FROM AUTHORITIES HAVING JURISDICTION.
- THE CONTRACTOR SHALL GUARANTEE ALL MATERIALS AND LABOR FOR ONE YEAR FROM THE DATE OF FINAL ACCEPTANCE BY THE OWNER UNLESS NOTED OTHERWISE.
- PROVIDE SIX COPIES OF SHOP DRAWINGS OF SUPPLIED ELECTRICAL EQUIPMENT FOR APPROVAL INCLUDING LIGHT FIXTURES, SAFETY SWITCHES, FIRE ALARM COMPONENTS AND WIRING DEVICES.
- PRIOR TO SUBMISSION FOR REVIEW OF ANY ITEM OF EQUIPMENT, DETERMINE WHETHER OR NOT IT WILL FIT IN THE SPACE PROVIDED. ANY CHANGES IN THE SIZE OR LOCATION OF THE MATERIAL SUPPLIED WHICH MAY BE NECESSARY IN ORDER TO MEET FIELD CONDITIONS OR IN ORDER TO AVOID CONFLICTS WITH OTHER DIVISIONS SHALL BE BROUGHT TO THE IMMEDIATE ATTENTION OF THE ENGINEER AND APPROVAL RECEIVED BEFORE SUCH ALTERATIONS ARE MADE.
- PROVIDE "AS BUILT" RECORD DRAWING SET (RED LINE).
- GENERALLY, ALL WORK IN FINISHED AREAS SHALL BE CONCEALED. CONSULT OWNER FOR DIRECTION WHERE WORK CANNOT BE CONCEALED.
- FEEDERS AND BRANCH CIRCUITS SHALL BE INSTALLED AS FOLLOWS:
 -CONCEALED ABOVE CEILING OR IN STUD WALL; SINGLE CONDUCTORS IN EMT, TYPE MC CABLE (METAL CLAD) SHALL BE PERMITTED FOR 15 THROUGH 50 AMP CIRCUITS.
 -FINAL CONNECTIONS TO MOTORS, TRANSFORMERS AND OTHER VIBRATING EQUIPMENT:
 OUTDOORS OR WET LOCATIONS: LIQUIDTIGHT FLEXIBLE METAL CONDUIT
 INDOORS: FLEXIBLE METAL CONDUIT
 -UNDERGROUND: SCHED 40 PVC, ADAPTED TO RIGID GALVANIZED STEEL WHERE SLAB OR GRADE IS PENETRATED
- ALL CONDUCTORS SHALL BE COPPER WITH INSULATION RATED FOR 600V AND NOT LESS THAN 90 DEGREES C.
- BRANCH CIRCUIT CONDUCTORS SHALL NOT BE LESS THAN #12 AWG AND SHALL NOT EXCEED 100 FEET FROM PANELBOARD TO FURTHEST OUTLET. FOR HOMERUNS THAT DO NOT EXCEED 150 FEET, #10 AWG IS PERMITTED. FOR HOMERUNS GREATER THAN 150 FEET, CONDUCTOR SHALL NOT BE LESS THAN #8 AWG.
- COLOR CODE THE CONDUCTORS OF EACH PHASE AS FOLLOWS:
 480/277 VOLT: A-BROWN, B-ORANGE, C-YELLOW
 120/208 VOLT: A-BLACK, B-RED, C-BLUE
 NEUTRAL CONDUCTORS:
 277 VOLT-NATURAL GRAY
 120 VOLT-WHITE
 GROUND WIRES SHALL BE BARE COPPER OR CODED GREEN IF INSULATED.
- CIRCUITING SHALL BE AS SHOWN ON THE DRAWINGS AND IN ACCORDANCE WITH APPLICABLE CODES AND STANDARD PRACTICE.
- COMBINING OF CIRCUITS WITHIN A SINGLE RACEWAY IS PERMITTED, WITH A MAXIMUM OF EIGHT CURRENT CARRYING CONDUCTORS PER HOMERUN.
- COMMUNICATIONS CONDUIT: 3/4" EMT WITH PULL STRING TO 6" ABOVE ACCESSIBLE CEILING FOR PHONE AND COMPUTER ACCESS.
- ALL CUTTING AND PATCHING REQUIRED FOR INSTALLING THE ELECTRICAL WORK SHALL BE FURNISHED AND INSTALLED BY THE CONTRACTOR. ALL CUTTING SHALL BE PATCHED AND FINISHED TO MATCH SURROUNDING AREA, SATISFACTORY TO OWNER.
- PENETRATIONS OF ABOVE GRADE FLOOR SLABS, FIRE PENETRATIONS AND FIRE WALLS SHALL BE FIRE STOPPED BY SEALING WITH MATERIAL APPROVED FOR THE APPLICATION.
- PROVIDE SEALING FITTINGS TO PREVENT PASSAGE OF WATER VAPOR WHERE CONDUITS PASS FROM WARM TO COLD LOCATIONS, SUCH AS REFRIGERATED SPACES, AIR CONDITIONED SPACES OR SIMILAR SPACES. IN CONCEALED WORK, EACH FITTING SHALL BE INSTALLED IN A FLUSH STEEL BOX WITH A BLANK COVER PLATE HAVING THE SAME FINISH AS THAT OF OTHER ELECTRICAL PLATES.
- FURNISH AND INSTALL ALL SUPPORT HANGERS AND MISC. METALS SUCH AS: GALVANIZED IRON PIPE STANCHIONS, RACKS, FITTINGS, ETC. REQUIRED FOR PROPER INSTALLATION OF WORK. ALL MISC. RACKS AND FITTINGS SHALL BE GALVANIZED AND SHALL EITHER BE INDOOR CHANNEL, POWER STRUT OR UNISTRUT, UNLESS OTHERWISE SPECIFIED.
- MINIMUM REQUIREMENT FOR GROUNDING SYSTEM SHALL BE GOVERNED BY THE LATEST EDITION OF THE NEC. ALL GROUNDS, BONDING, ETC. SHALL MEET THESE REQUIREMENTS EXCEPT WHERE MORE STRINGENT REQUIREMENTS ARE SPECIFIED HEREIN. FURNISH AND INSTALL ANY AND ALL ITEMS NECESSARY TO MEET THESE REQUIREMENTS.
- EXCEPT WHERE SPECIFICALLY INDICATED, ALL EXPOSED NON-CURRENT CARRYING METALLIC PARTS OF ELECTRICAL EQUIPMENT, METALLIC RACEWAY SYSTEMS, GROUND BUS, METALLIC CABLE ARMOR AND NEUTRAL CONDUCTOR OF THE WIRING SYSTEM SHALL BE GROUNDED.
- ALL RECEPTACLES SHALL BE GROUNDED VIA A COPPER GROUNDING CONDUCTOR THAT SHALL BE RUN WITH POWER WIRES. A SEPARATE GROUNDING CONDUCTOR SHALL BE RUN IN EVERY FEEDER AND BRANCH CIRCUIT CONDUIT.
- ALL DEVICES SHALL BE SPECIFICATION GRADE AND OF ADEQUATE SIZE AND TYPE AS REQUIRED FOR THE PARTICULAR LOCATION AND SERVICE INTENDED. DEVICES SHALL NOT BE RATED LESS THAN 20 AMPS. ALL DEVICES SHALL HAVE WHITE FINISHES UNLESS NOTED OTHERWISE. DEVICE PLATES SHALL BE WHITE NYLON.
- OUTLET BOXES IN THE DRYWALL PARTITIONS OR COLUMNS SHALL BE 4" SQUARE AND NOT LESS THAN 1 1/2" DEEP. GALVANIZED SHEET STEEL WITH PLASTER COVERS. BOXES SHALL BE AS MANUFACTURED BY STEEL CITY OR EQUIVALENT.
- FURNISH AND INSTALL PULL AND JUNCTION BOXES WHERE SHOWN ON DRAWINGS AND ANY ADDITIONAL BOXES AS MAY BE REQUIRED TO FACILITATE PULLING WIRE AND CABLE OR TO PREVENT DAMAGE TO INSULATION.
- CONDUCTORS SHALL BE CONTINUOUS WITHOUT JOINTS OR SPLICES ON RUNS BETWEEN OUTLET BOXES. ALL SPLICES SHALL BE MADE AT BOXES ONLY.
- LABEL EACH RECEPTACLE ON THE INSIDE OF EACH FACEPLATE WITH PANEL AND CIRCUIT NUMBER DESIGNATIONS.
- PROVIDE THE NECESSARY SOURCE OF POWER, METERS, INSTRUMENTS, TEMPORARY WIRING AND LABOR, AND PERFORM TESTS AND ADJUSTMENTS OF EQUIPMENT AND WIRING INSTALLED OR CONNECTED UNDER THIS SPECIFICATION TO DETERMINE PROPER PHASING, POLARITY, FREEDOM FROM GROUNDS, AND OPERATION OF EQUIPMENT.
- FIRE ALARM COMPONENTS SHALL BE LISTED FOR USE WITH THE EXISTING FIRE ALARM SYSTEM. PROVIDE COMMON COMPONENTS AND PROGRAMMING AS REQUIRED.

A9 ELECTRICAL SPECIFICATION

**160 Veranda Street
Portland, Maine 04103
T: 207.221.2260
F: 207.221.2266
Web: www.allied-eng.com**

Allied Engineering
Structural Mechanical Electrical Commissioning

NO.	DATE	BY	DESCRIPTION

REVISIONS

Date: _____
 Drawn By: D.L.
 Checked By: S.M.
 Project Mgr: J.M.
 Project No: 10031
 Cad File: 10031E.DWG
 Graphic Scale: 0' = 1" = 0'

ELECTRICAL PLANS AND DETAILS

MAINE MEDICAL CENTER
FLOWER SHOP PROJECT
PORTLAND, MAINE

E-100

SD Pricing ~ 02 April 2010 ~ NOT FOR CONSTRUCTION