

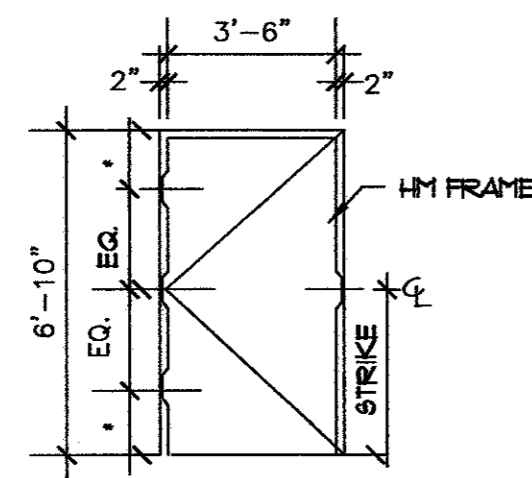
ROOM FINISH SCHEDULE

ROOMS		FLOOR	BASE	WALLS	CEILING	NOTES
NUMBER	NAME	MATERIAL	MATERIAL	MATERIAL	MATERIAL	
6015	TOILET	EXST TO REMAIN	4" VCB	PAINT	E.T.R.	NO WORK
6013	EXISTING REHAB AREA	RUBBER	4" VCB	PAINT	E.T.R.	-
6013A	NEW REHAB AREA	RUBBER	4" VCB	PAINT	E.T.R.	EXISTING VCT AT STORAGE NICHE
-	-	-	-	-	-	-
-	-	-	-	-	-	-
-	-	-	-	-	-	-
-	-	-	-	-	-	-
-	-	-	-	-	-	-
-	-	-	-	-	-	-

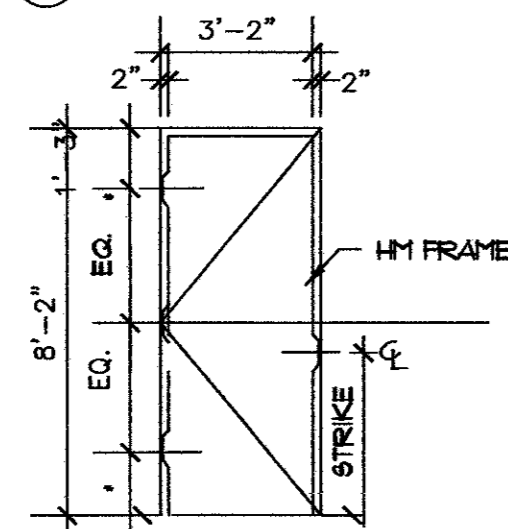
ABBREVIATIONS
 E.T.R. EXISTING TO REMAIN
 V.C.B. VINYL COVE BASE
 V.C.T. VINYL COMPOSITION TILE

DOOR SCHEDULE

DOOR		FRAME	HARDWARE SET	REMARKS	
NUMBER	SIZE	MATERIAL	MATERIAL		
01	3'-6" x 7'-0"	MATCH EXIST.	HOLLOW METAL	HU-1	-
02	EXISTING - TO REMAIN	E.T.R.	E.T.R.	E.T.R.	-
03	3'-0" x 6'-8"	MATCH EXIST.	HOLLOW METAL	HU-1	RELOCATE ENTRY DOOR - REHAB
-	-	-	-	-	-
-	-	-	-	-	-
-	-	-	-	-	-
-	-	-	-	-	-
-	-	-	-	-	-
-	-	-	-	-	-
-	-	-	-	-	-

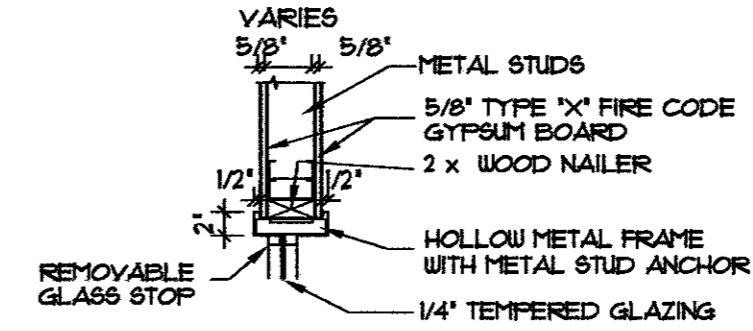


2 FRAME ELEVATION

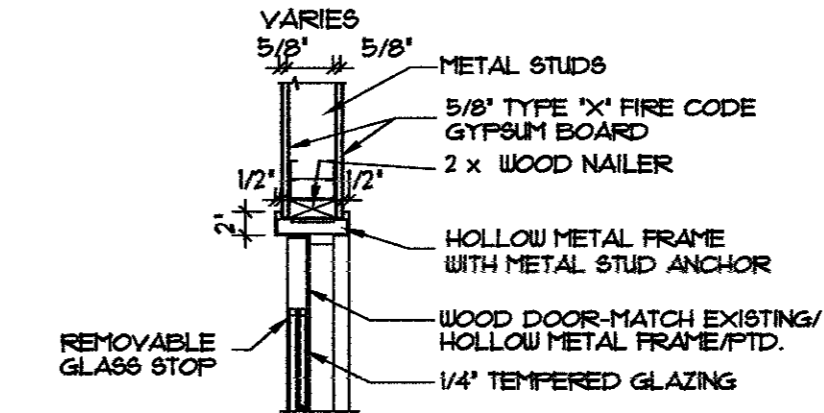


1 FRAME ELEVATION
 Note: verify ht. w/ exist conditc

FRAME TYPES



1 BORROWED LITE - METAL HEAD / JAMB DT'L
 SCALE: 3/4" = 1'-0"



2 DOOR HEAD / JAMB DT'L
 SCALE: 3/4" = 1'-0"

INTERIOR DOOR NOTE:

DOOR HARDWARE GENERAL NOTES

- ALL DOOR HARDWARE SHALL ALLOW FREE ACCESS IN THE EGRESS DIRECTION AT ALL TIMES.
 - ALL DOORS, FRAMES, AND HARDWARE SHALL BE MMC BUILDING STANDARD UNLESS OTHERWISE NOTED.
 - ALL HARDWARE SHALL COMPLY WITH A.D.A. REQUIREMENTS AND STANDARDS.
 - ALL SEPERATE LOCKS SHALL BE MASTER-KEYED TO MMC STANDARDS.
 - ALL DOORS SHALL HAVE LEVER HANDLES.
 - HARDWARE FINISH: US26 BRUSHED STAINLESS.
 - PAINT ALL HM DOOR FRAMES TO MATCH EXISTING CONDITIONS, UNLESS OTHERWISE NOTED.
 - PAINT PUBLIC CORRIDOR SIDE OF DOORS TO MATCH EXISTING CONDITIONS, PAINT INTERIOR SIDE MMC STANDARD.
- 1) INTERIOR DOORS: MANUFACTURER-CURRIES OR EQUAL
 A) STYLE: MATCH EXISTING (PREFERFINISH).

HARDWARE SET 1

- 1 1/2 FR HINGES
- LOCKSET (storage function)-LEVER HANDLES
- 3 EACH SILENCERS
- FLOOR STOP
- 4 FOR EACH LEAF

HARDWARE SET 2

- 1 1/2 FR HINGES
- LOCKSET (classroom function)-LEVER HANDLES
- 3 EACH SILENCERS
- (1) FLOOR STOP

HARDWARE SET 3

- 1 1/2 FR HINGES
- PASSAGE LATCHSET-LEVER HANDLES
- 3 EACH SILENCERS
- (1) FLOOR STOP

HARDWARE SET 4

- 1 1/2 FR HINGES
- LOCKSET (privacy function)-LEVER HANDLES
- 3 EACH SILENCERS
- FLOOR STOP
- CLOSER
- 4 FOR EACH LEAF

HARDWARE SET 5

- 1 1/2 FR HINGES
- EXIT DEVICE (w/ LEVER HANDLES (store room function))
- 3 EACH SILENCERS
- FLOOR STOP
- CLOSER
- 4 FOR EACH LEAF
- ELECTRIC STRIKE BY CARD ACCESS VENDOR

CONSULTANTS

BBCH
 Rehab Area
 Expansion

MARK	DATE	DESCRIPTION
		For Construction
		ISSUE: 6/ 15 /10
		PROJECT NO: 210052
		CAD DWG FILE: NA
		DRAWN BY: WIP
		CHECKED BY: DD

SHEET TITLE

Schedules
 and Details

Scale: 1/2" = 1'-0"

A-3
 Sheet of