

MAINE MEDICAL CENTER

BARBARA BUSH CHILDREN'S HOSPITAL

REHAB AREA EXPANSION

BRAMHALL CAMPUS PORTLAND, MAINE

CONSULTANTS

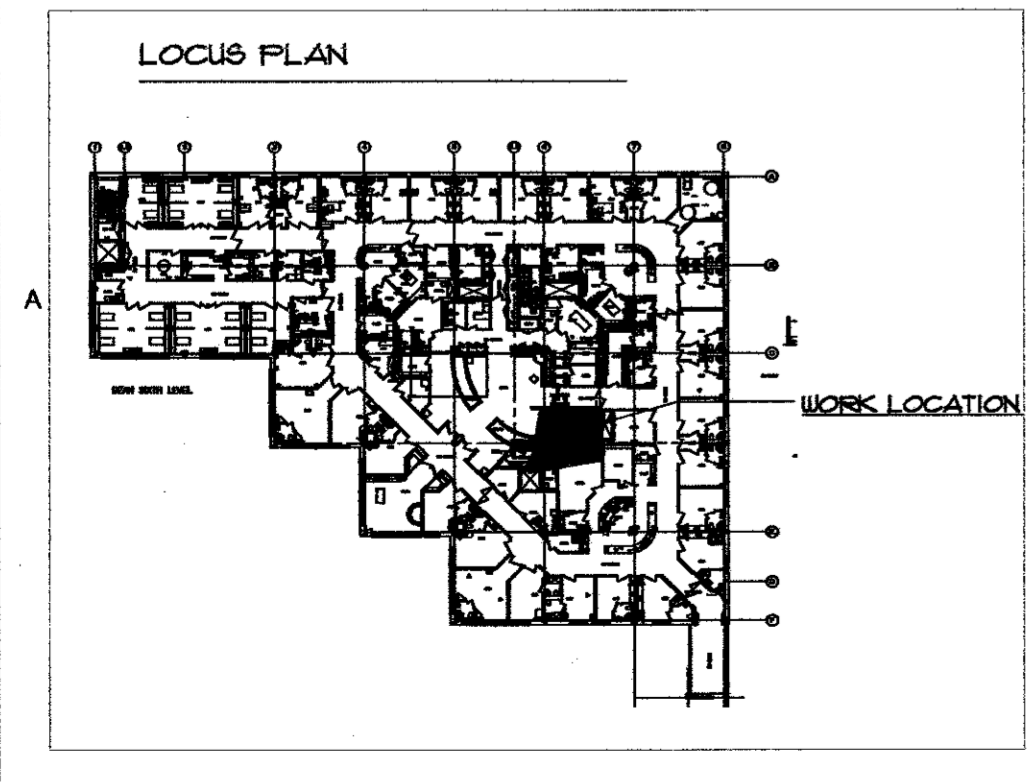
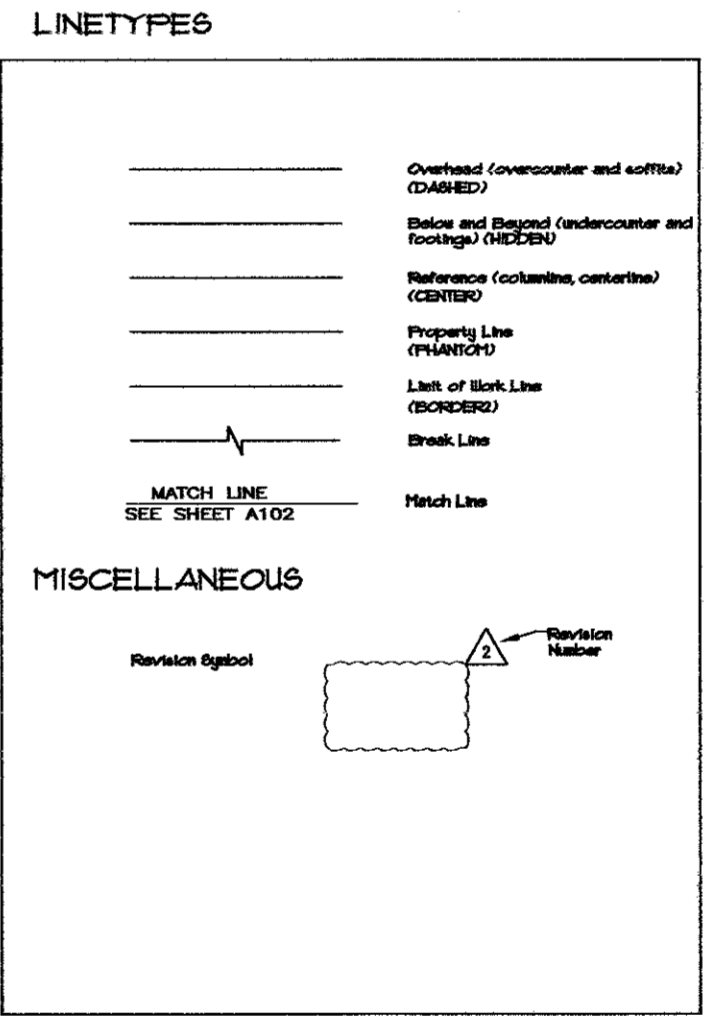
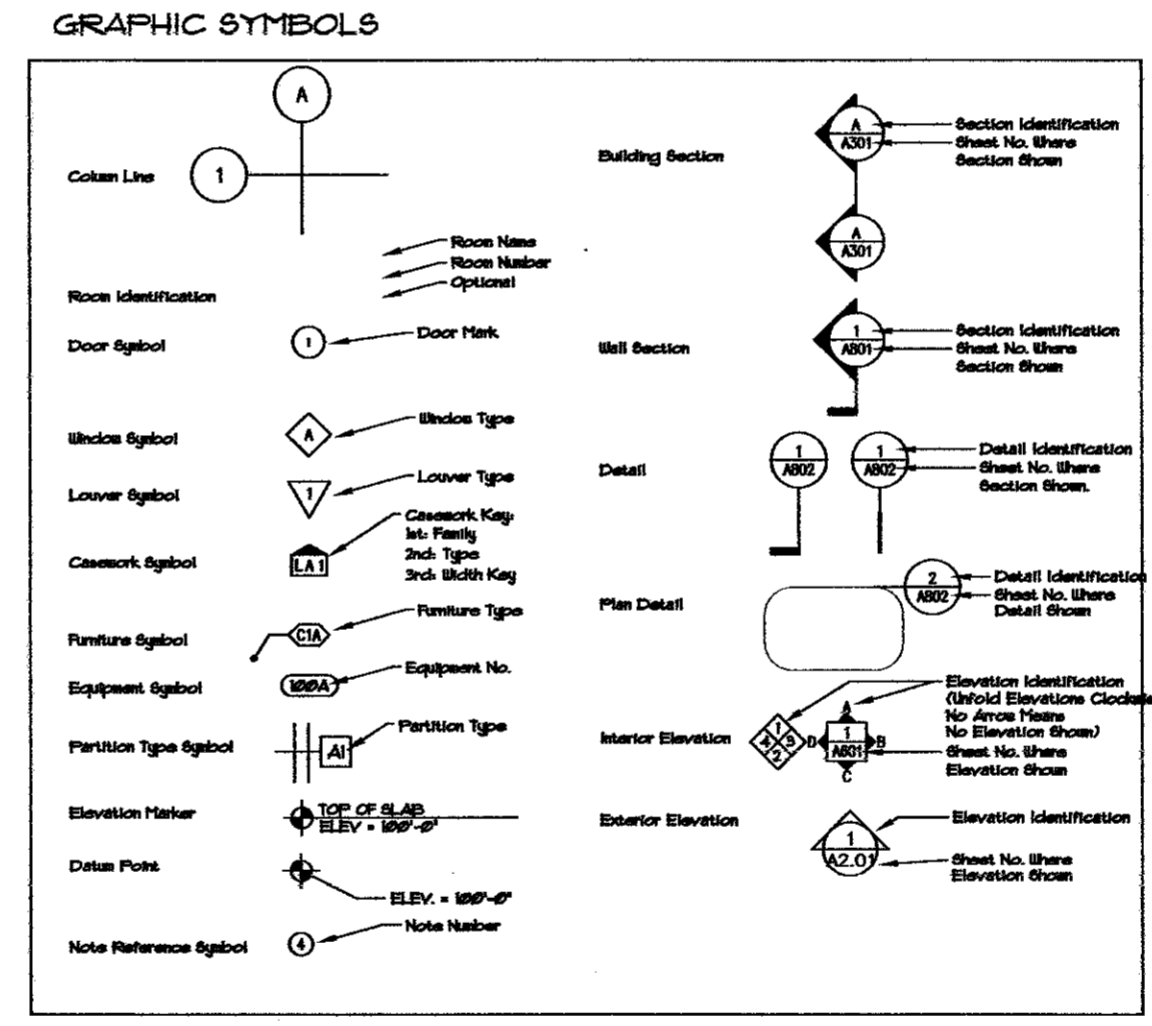
Rehab
Area
Expansion

DRAWING LIST

T-1	TITLE SHEET
Ae-1	EXISTING FLOOR PLAN
Ae-2	EXISTING INTERIOR ELEVATIONS
A-1	FLOOR PLAN- NEW
A-2	INTERIOR ELEVATIONS-NEW
A-3	SCHEDULES AND NOTES
A-4	FURNITURE/ REFLECTED CLG PLANS

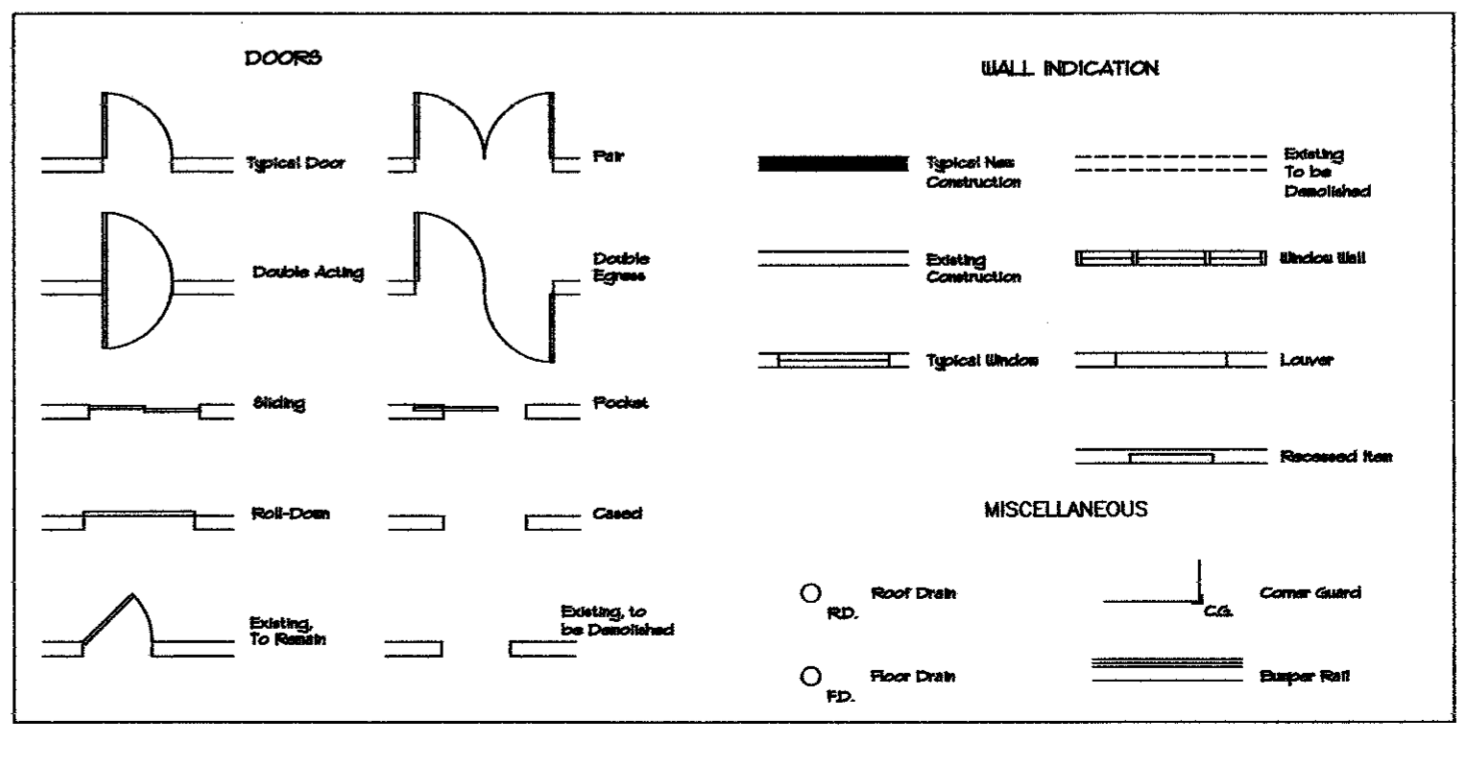
MATERIAL CONVENTIONS

	Acoustical Tile or Panel		Insulation, Rigid
	Aluminum		Mortar, Grout (omit at smaller scales)
	Brick		Plywood (omit at smaller scales)
	Ceramic Tile (omit at smaller scales)		Sand
	Concrete Cast-in-Place		Steel
	Earth		Wood Finish
	Flashing		Wood Framing Continuous
	Glass (omit at smaller scales)		Wood Framing Interrupted Member
	Gypsum Board		Waterproofing
	Insulation Batt or Blanket		



CODE ANALYSIS

PROJECT SCOPE:	ENLARGEMENT OF EXISTING REHABILITATION ROOM
APPLICABLE CODES:	INTERNATIONAL BUILDING CODE, 2003 AMERICANS WITH DISABILITIES ACT NFPA 99-LIFE SAFETY CODE-2009 NFPA 220-STD. ON BLDG. CONST. TYPES-2006
OCCUPANCY:	GUIDELINES FOR DESIGN AND CONSTRUCTION OF HEALTHCARE FACILITIES- 2006
CONSTRUCTION TYPE:	HEALTHCARE
FIRE RESISTANCE RATINGS:	NFPA TYPE 222 - PROTECTED NONCOMBUSTIBLE
NOTE: THIS PROJECT INVOLVES NO CHANGE TO RATED ASSEMBLIES	
EGRESS STAIRS	N/A
EGRESS CORRIDORS	Smoke Resistant
ELEVATOR SHAFT & MACHINE ROOM	1 HOUR
FIRE SEPARATION	1 HOUR
MECHANICAL ROOMS	1 HOUR
EXIT STAIRS	2 HOURS
TYPE 2A	
STRUCTURE	1 HOUR
FLOOR/CEILING ASSEMBLY	1 HOUR
ROOF ASSEMBLY	1 HOUR



MARK	DATE	DESCRIPTION
		For Construction
	6/15/10	ISSUE:
		PROJECT NO: 210052
		CAD DWG FILE: unknown
		DRAWN BY: WP
		CHECKED BY: DD

SHEET TITLE

TITLE SHEET